

Major work now approved

Tunnelling and station excavation between Westmead and The Bays will start this year



Sydney Metro is Australia's biggest public transport project, transforming Sydney with a world-class metro.

Work started on Sydney Metro West in 2020 and now planning approval has been granted for the Sydney Metro West project concept between Westmead and the Sydney CBD and for major construction work between Westmead and The Bays by the Department of Planning, Industry and Environment. This approval is the next huge milestone for the project following work starting at The Bays Station site. It means work can now begin to prepare for tunnels and station excavation between Westmead and The Bays.

Sydney Metro West will double rail capacity between Greater Parramatta and the Sydney CBD, transforming Sydney for generations to come.

The once in a century infrastructure investment will have a target travel time of about 20 minutes between Parramatta and the Sydney CBD, link new communities to rail services and support employment growth and housing supply.

The project is expected to create about 10,000 direct and 70,000 indirect jobs during construction.








Stations have been confirmed at Westmead, Parramatta, Sydney Olympic Park, North Strathfield, Burwood North, Five Dock, The Bays, Pyrmont and the Sydney CBD. Further planning is underway to determine the locations of the Pyrmont and Sydney CBD stations.

Feedback on the Environmental Impact Statement

The Westmead to The Bays and Sydney CBD Environmental Impact Statement was on public exhibition between **30 April and 26 June 2020**. Submissions received from stakeholders and the community have been considered in the assessment of the project and are detailed in a Submissions Report.

Changes made to the project following exhibition of the Environmental Impact Statement are detailed in an Amendment Report.

Find out more here:
sydneymetro.info/metrowest

-  Faster, more frequent access to major employment and education centres like Parramatta, Sydney Olympic Park and The Bays.
-  A new metro station at Westmead – one of Australia's largest health and education precincts.
-  Delivering new rail services for the first time at Burwood North, Five Dock, Pyrmont and The Bays.
-  A new metro station at Pyrmont – delivering major benefits to the Pyrmont community and supporting plans to transform the harbourside suburb.
-  A new metro station at Sydney Olympic Park, Sydney's sporting and entertainment super-precinct.
-  Integrated with the rest of Sydney's public transport system.
-  All Sydney Metro infrastructure like the stations, trains and railway tracks are owned by the NSW Government.

Work that is now approved as part of the first State significant planning approval for Sydney Metro West.

Westmead metro station and tunnel boring machine launch site

- Excavating the station box – to a depth of 30 metres (approximately 10 storeys)
- Launching two tunnel boring machines
- Excavating a turnback cavern



An artist's impression of Westmead metro station.

Westmead

Parramatta

Parramatta metro station

- Excavating the station box – to a depth of 28 metres (approximately 10 storeys)



An artist's impression of Parramatta metro station.

Clyde stabling and maintenance facility

- Preparing the site for a stabling and maintenance facility
- Excavating a shaft for a service facility
- Creating a tunnel for the metro trains to access the services facility for the Sydney Metro West line

Clyde

Silverwater

Silverwater services facility

- Excavating a shaft for a services facility

Sydney Olympic Park

Sydney Olympic Park metro station and tunnel boring machine retrieval site

- Excavating the station box – to a depth of 25 metres (approximately 8 storeys)
- Retrieving four tunnel boring machines from the excavated station box



An artist's impression of Sydney Olympic Park metro station.

North Strathfield metro station

- Excavating the station box – to a depth of 18 metres (approximately 6 storeys)



An artist's impression of North Strathfield metro station.

North Strathfield

Burwood North

Burwood North Station

- Excavating the station box – to a depth of 23 metres (approximately 8 storeys)
- Excavating a turnback cavern



An artist's impression of Burwood North Station.

Five Dock

Five Dock Station

- Excavating the station shafts and caverns – to a depth of 30 metres (approximately 10 storeys)



An artist's impression of Five Dock Station.

The Bays Station and tunnel boring machine launch site

- Excavating the station box – to a depth of 30 metres (approximately 10 storeys)
- Launching two tunnel boring machines



An artist's impression of The Bays Station.

The Bays

Pymont

Sydney CBD

Key

- Sydney Metro West station
- Tunnel boring machine launch site
- Tunnel boring machine retrieval site
- Service facility
- Stabling and maintenance facility
- Direction of tunnel construction

- Indicative future tunnel alignment
- Sydney CBD study area

*exact locations of the tunnel between The Bays and Sydney CBD would be subject to further environmental assessment.

0 3km

Westmead to The Bays tunnelling and station excavation

Construction will include tunnelling more than 20 kilometres of twin tunnels from Westmead to The Bays and excavating seven new stations at Westmead, Parramatta, Sydney Olympic Park, North Strathfield, Burwood North, Five Dock and The Bays.

The Sydney Metro West tunnels will be 38 metres deep on average – that's about 13 storeys below ground.

Minimising construction impacts

Construction work will be undertaken within the Minister for Planning and Public Spaces' conditions of approval for the project, and specific measures to manage noise, vibration, dust and traffic have been identified through the planning process. This includes using practical measures like

hoardings and acoustically sealed sheds in some locations. We will continue to work with the community to consider construction methods that would further reduce impacts. We will inform nearby residents before the works commence.



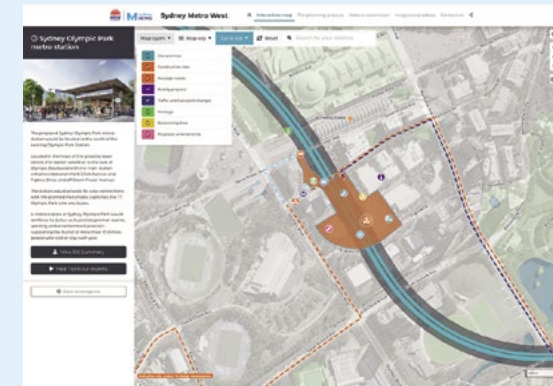
An acoustic shed used to minimise noise impacts on the Sydney Metro City & Southwest project.

Minimising traffic impacts

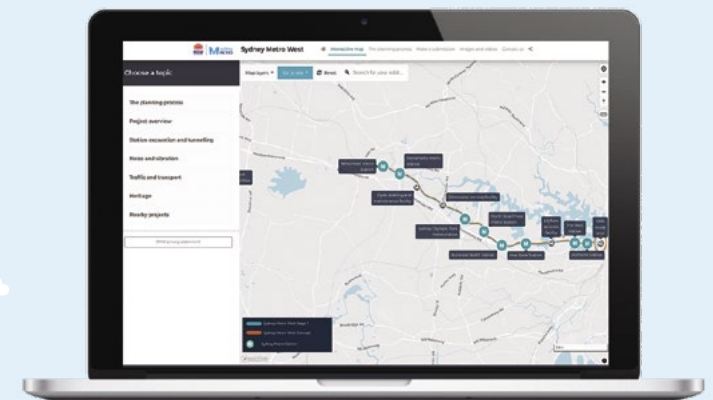
Traffic, pedestrian and cycle routes will be managed to minimise disruption and congestion around the construction sites. Traffic management plans for each area will be developed in close consultation with local councils and traffic authorities. We have planned our haulage routes to minimise the use of local roads and potential interfaces with pedestrians, cyclists and road users as much as possible. Some sites will require temporary changes to the road network and bus stops. We will inform the local community before these works take place.

To learn more about what's planned for your area visit the project interactive portal at:

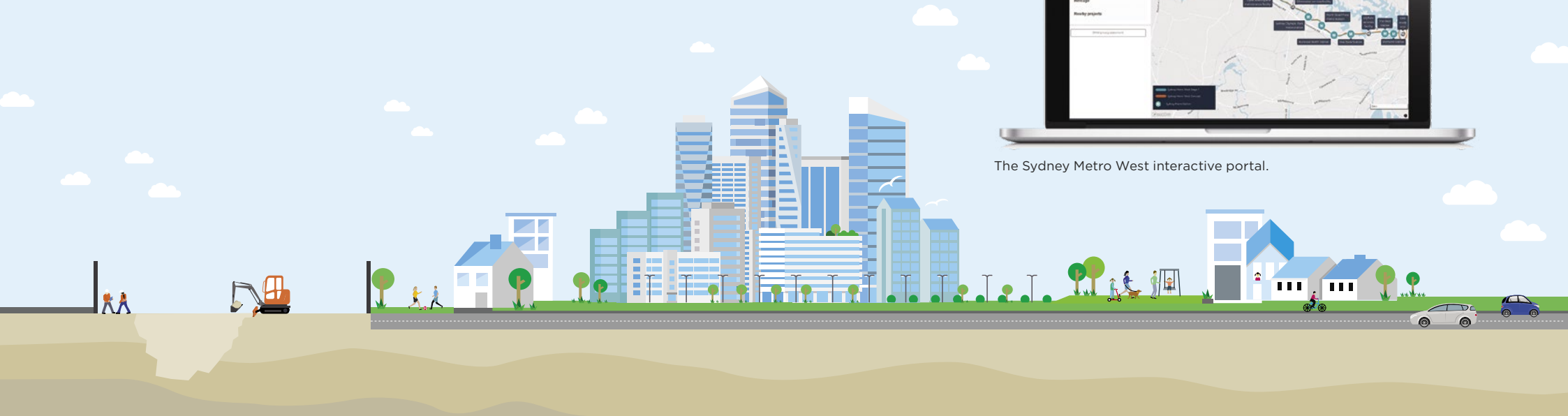
sydnymetro.info/metrowest



Sydney Olympic Park metro station interactive portal.



The Sydney Metro West interactive portal.





An artist's impression of Parramatta metro station.

Planning for the project continues

Formal project planning for Sydney Metro West started in 2019 and will continue through the early 2020s.

The Sydney Metro West project team has created an easy to use online resource that brings together all of the planning information for the project and the planning documents at: sydnymetro.info/metrowest.

Sydney Metro West place managers will continue to work with the community during planning and construction of this city-shaping project.

Future project approvals will consider major civil construction work including station excavation and tunnelling between The Bays and Sydney CBD including Pyrmont; and all stations, depots and rail systems between Westmead and the Sydney CBD Station. We'll also plan for the areas surrounding the stations including placemaking and any integrated station or precinct developments in some locations.



An artist's impression of Parramatta metro station.

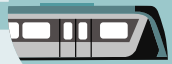
Sydney Metro West is subject to further planning processes and there will be a chance to have your say every step of the way.

Tunnelling and station excavation - Westmead to The Bays

Approved by the Department of Planning, Industry and Environment in March 2021



we are here



Tunnelling and station excavation - The Bays to the Sydney CBD



Station buildings, services and connections - Westmead to the Sydney CBD



Parramatta integrated station development



Pyrmont integrated station development



Sydney CBD integrated station development



The Bays integrated station development



Sydney Olympic Park integrated station development



Five Dock precinct development



Burwood North precinct development



Westmead precinct development



**subject to planning processes*

Sydney Metro is committed to building and operating a sustainable transport system that delivers on our environment and social responsibilities. Early targets for Sydney Metro West include:

- **offsetting 100 per cent of electricity** used to power the metro line
- **reuse and recycling of water, energy, waste, spoil and materials** during construction including targeting 100 per cent beneficial reuse of clean spoil
- **installing water efficient fixtures**, rainwater harvesting, onsite solar power and energy efficient lighting systems at stations
- **providing diverse workforce** development and industry participation with a key focus on Aboriginal participation.

Learn more about sustainability at Sydney Metro here: sydnymetro.info/our-approach-sustainability and diversity and inclusion here: sydnymetro.info/workforce-development-and-industry-participation.



Sydney Metro pre-employment program participant.

Beryl solar farm at Gulgong offsets 100 per cent of electricity used on the Metro North West Line.



Working with the community

The Sydney Metro team has engaged with more than 15,000 people in planning for the project and we will continue to work with the community.



Sydney Metro West virtual community event.

To learn about what's happening in your area

Get in touch with one of our dedicated place managers by phone and email.

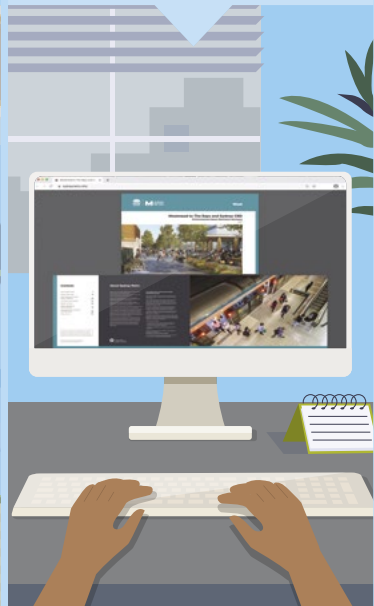
Visit the Sydney Metro website and sign up for area specific project alerts.

Visit our interactive portal with project information relevant to your area.

Read our planning documents, project guides, summary books and project materials on the interactive portal or Sydney Metro website.

Check our notifications and newsletters that we'll deliver to your home or businesses along the project alignment and upload to the Sydney Metro website.

Come along to virtual or face-to-face community events held during key phases of the project to speak to members of the project team.





Our place managers

Sydney Metro has dedicated community relations specialists called place managers who can be contacted for further information about the project. Their role is to act as a single, direct contact between members of the community and the project team.

Working with other projects

Sydney Metro recognises there are a number of major infrastructure projects underway and planned in the Inner West and Western Sydney. These projects will meet the needs of Sydneysiders now and into the future.

Sydney Metro is working closely with local councils, NSW Government agencies and stakeholders to coordinate construction programs and, where possible, integrate work to minimise impacts on the community.



Aerial view overlooking The Bays.



Nearby projects

Find out more about other NSW Government infrastructure projects in your area.

Parramatta Light Rail

Online: parramattalightrail.nsw.gov.au

Email: parramattalightrail@transport.nsw.gov.au

Call: 1800 139 389

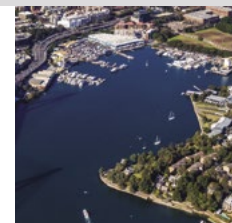


Revitalisation of Blackwattle Bay, including the new Sydney Fish Market

Online: infrastructure.nsw.gov.au/blackwattlebay

Email: mail@insw.com

Call: 9216 5700



Western Harbour Tunnel and Beaches Link

Online: nswroads.work/whtbl

Email: whtbl@transport.nsw.gov.au

Call: 1800 931 189



M4-M5 Link Rozelle interchange

Online: westconnex.com.au

Email: info@rozelleinterchange.com

Call: 1800 660 248

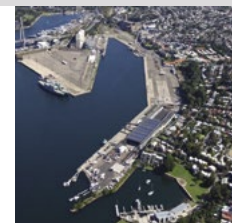


Glebe Island Multi-User Facility

Online: portauthoritynsw.com.au

Email: Glebelsland_MultiUserFacility@portauthoritynsw

Call: 9296 4962





An artist's impression of Parramatta metro station.

Contact us

Sydney Metro is making project information as easy to access as possible. We want to connect with you so you can find out what you need to know, learn more about the project and have your say.



Visit **sydneymetro.info** to learn more about Sydney Metro West and sign up for email alerts.



Visit **sydneymetro.info/metrowest** to view the Sydney Metro West interactive portal.



Call us on **1800 612 173** to talk to one of our dedicated place managers.



Email your queries to **sydneymetrowest@transport.nsw.gov.au** and we'll get back to you.



Sydney Metro West, PO Box K659, Haymarket NSW 1240.



If you need an interpreter, contact TIS National on **131 450** and ask them to call **1800 612 173**.



Scan to learn more about the **tunnelling and station excavation between Westmead and The Bays**.

