



An artist's impression of Airport Business Park Station.

Project construction update

The Sydney Metro – Western Sydney Airport project will create a new public transport spine for Greater Western Sydney and serve the region for generations to come.

The new metro railway will link the new Western Sydney International (Nancy-Bird Walton) Airport and Western Sydney Aerotropolis with St Marys.

Construction started late last year with site clearing and early works at Gipps Street to prepare the construction site at Claremont Meadows. Sydney Metro works are continuing with surveying, utility and geotechnical investigation works along the project alignment.

Six new metro stations will be delivered at – St Marys, Orchard Hills, Luddenham, Airport Business Park, Airport Terminal and at the commercial heart of the Western Sydney Aerotropolis (the area proposed to be named Bradfield).

The project will support 14,000 jobs during construction, with more than 250 apprenticeships on offer.

The Australian and NSW governments have a shared objective of having Sydney Metro – Western Sydney Airport operational when the airport opens for passenger services.

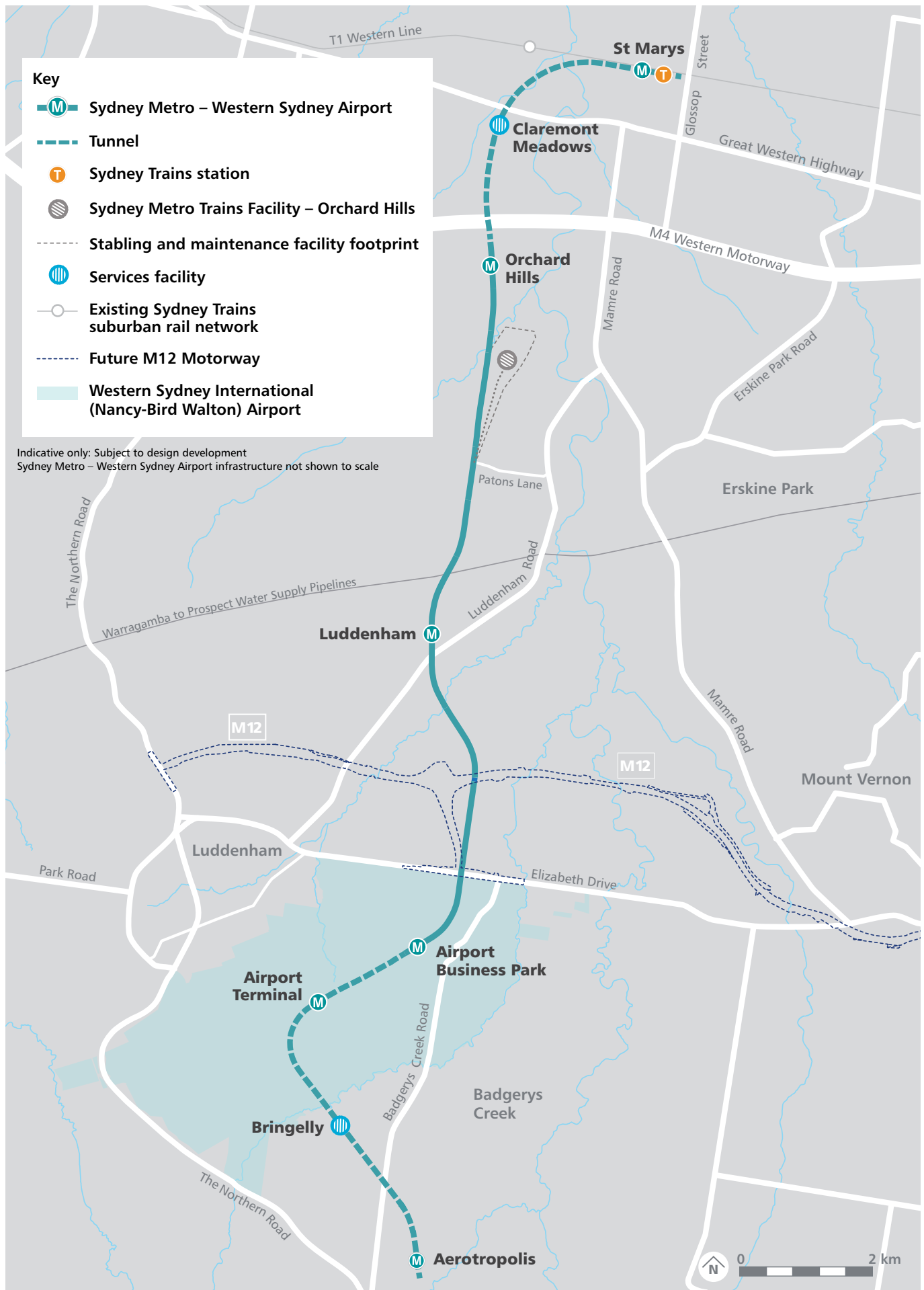
The project is a key part of delivering an integrated transport system for the Western Parkland City.

Key features of the new metro

-  Next generation fully air-conditioned metro trains
-  A train every 5 minutes in the peak in each direction when the line opens
-  Fully accessible stations with level access between platforms and trains
-  No timetables – just turn up and go
-  CCTV security monitoring and platform screen doors
-  Safe and easy interchange with Sydney Trains services at St Marys
-  Fast travel times to key precincts in the Western Parkland City

Estimated travel times

20 minutes	St Marys to the Aerotropolis
15 minutes	Airport to St Marys
5 minutes	Airport to the Aerotropolis



Project alignment map.



An aerial view of St Marys.

What we are doing now

Early works are underway with geotechnical and utility investigations being undertaken along the alignment. Sydney Metro is also consulting impacted residents about future work to supply power for project construction sites.

The community is notified prior to works occurring to ensure they are aware of mitigation measures we are putting in place to manage the works.

What's next

The second half of 2021 will see works underway in St Marys to enable construction of the Sydney Metro – Western Sydney Airport project, subject to planning determination. More information about these works will be provided to the community before they occur.

St Marys parking changes

We appreciate that changes to parking arrangements may be difficult and will be working closely with Penrith City Council to manage any changes in St Marys.

You may be assured that as part of Sydney Metro's planning for the delivery of this project, studies were undertaken to confirm that there is enough parking capacity available both on-street and off-street around the St Marys town centre to accommodate any changes. There are a number of council car parks in the area for alternative parking, including Nariel Place, Belar Place, Kungala Place, Beacroft Place and Kokoda Place car parks.

Impacts to local parking will be staged throughout the project's construction period to help minimise disruption. We will also engage with businesses temporarily impacted by any changes through our community engagement team.

Car park extension works

Transport for NSW is adding an additional two levels to the existing multi-storey car park on Harris Street, St Marys. The works will deliver an additional 250 commuter spaces which will help manage impacts to parking in the area due to construction of the Sydney Metro – Western Sydney Airport project. Construction of the car park extension will start in mid-2021 and is expected to be completed in early 2022, prior to main construction of the metro.

A W Edwards has been awarded the contract to design and construct the additional levels on behalf of Transport for NSW and detailed design is underway. For information about these works, contact Transport for NSW on **1800 684 490** or **projects@transport.nsw.gov.au**

Veness Place car park changes

The site of the Veness Place car park on Station Street, St Marys was identified as being required last year for the Sydney Metro – Western Sydney Airport project, which is a State Significant Infrastructure Project.

In order to facilitate construction, the Veness Place car park will close later this year.

We will continue to work with council as work progresses and more information is available about timing of closure.

Road widening works

Road widening works on Glossop Street will be undertaken to enable construction vehicles to access the Sydney Metro – Western Sydney Airport construction site at St Marys. This is to ensure there will be minimal impact to existing traffic on Glossop Street during construction of the project.

Working with other projects

Sydney Metro recognises there are a number of major infrastructure projects underway and planned in Greater Western Sydney. These projects will support growth and underpin the development of key precincts in the Western Parkland City.

Sydney Metro is working closely with local councils, Australian and NSW government agencies and stakeholders to understand the work being delivered by those agencies in local areas. We are coordinating how we communicate with the local community to ensure residents and businesses understand who is carrying out the work and who to contact with any enquiries or complaints.

Next steps

The Environmental Impact Statement for the project was placed on public exhibition in late 2020 with the community encouraged to have their say on the project.

A Submissions Report has been prepared to respond to issues raised by the community and stakeholders during the exhibition. The Submissions Report can be viewed via the Sydney Metro website: sydneymetro.info/wsa.

The project is expecting to receive planning determination from the Department of Planning, Industry and Environment in mid-2021. We will keep the community informed about the outcome of the planning determination.

Place Managers

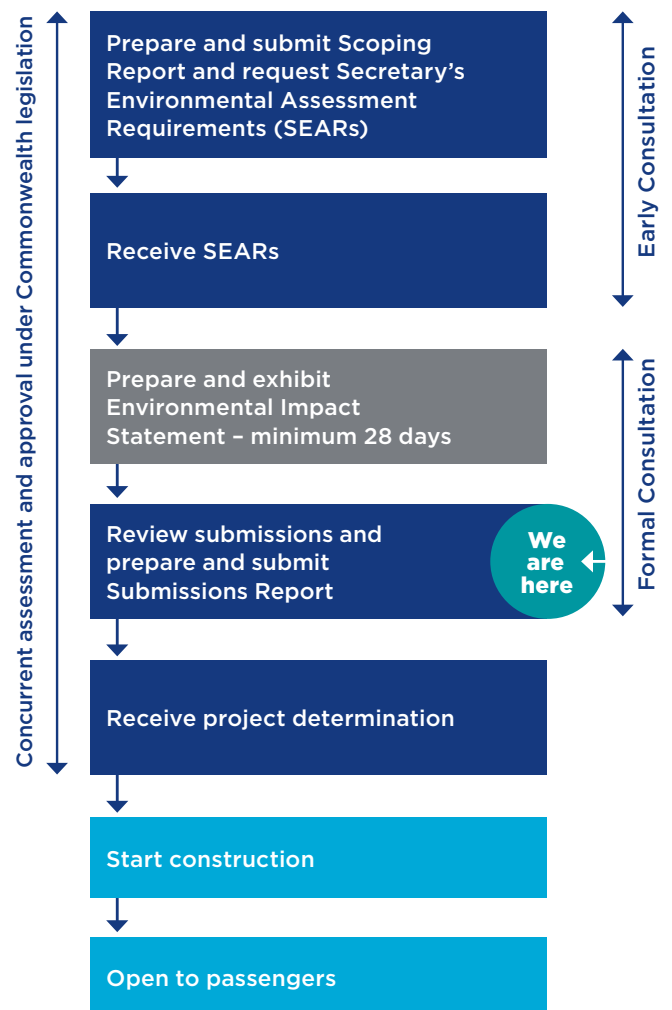
Sydney Metro has dedicated community specialists called Place Managers, who act as the single-point-of contact between members of the community and the project team. Place managers can be contacted to answer any questions or concerns you may have in relation to project activities.

Place Managers can be contacted on **1800 717 703** or sydneymetrowsa@transport.nsw.gov.au



Sydney Metro surveying works in Luddenham.

NSW planning process for Sydney Metro - Western Sydney Airport



Contact us



1800 717 703 Community information line open 24 hours



sydneymetrowsa@transport.nsw.gov.au



Sydney Metro - Western Sydney Airport, PO Box K659, Haymarket NSW 1240



If you need an interpreter, contact TIS National on **131 450** and ask them to call **1800 717 703**