

# Pymont



Aerial view of Pymont.

## Have your say

Sydney Metro West will link the Greater Parramatta and Sydney central business districts with a new underground metro railway system.

Station locations have been confirmed at Westmead, Parramatta, Sydney Olympic Park, North Strathfield, Burwood North, Five Dock and The Bays Precinct.

The location of the Sydney CBD station will be determined following further investigations and community and stakeholder engagement.

Pymont has been identified as a strategic optional station location.

## What we heard during early community consultation

Since 2016, Sydney Metro has been working with local communities, stakeholders and industry to create a project that will deliver fast, safe and reliable metro rail to Western Sydney.


Throughout 2017 and 2018 over 1600 surveys were completed and over 1000 people provided comments, submissions and feedback. Feedback was also received from a number of key

stakeholders including local councils, peak bodies, industry groups and government agencies. This feedback has helped to shape the project, including confirmed station locations and strategic optional stations at Pymont and Rydalmere.

We heard the top priorities when locating a metro station are:

- consideration of transport and traffic impacts
- land use planning, including the future vision of areas
- integration between transport modes
- social and business needs
- connections with other train lines on the network.

Tell us what you value about your local community and your vision for its future including public transport and growth.



**Travel time target of around 20 minutes between Parramatta and the Sydney CBD**

## Investing for the future

The NSW Government is investing in significant new infrastructure projects designed to deliver a renewed urban environment for Sydney that changes the patterns of where people live and work, how they enjoy their spare time and how they travel.

Sydney Metro West is one of the critical steps in support of Western Sydney's growing transport and population needs along with other initiatives like Parramatta Light Rail, and improvements to the suburban rail system through programs like 'More Trains, More Services'.

## Planning for Sydney Metro West

Stakeholder, industry and community feedback forms an important part of how we plan and choose locations for metro stations.

Another key consideration is the balance between travel times and number of stations to ensure the project provides the best outcome for the community.

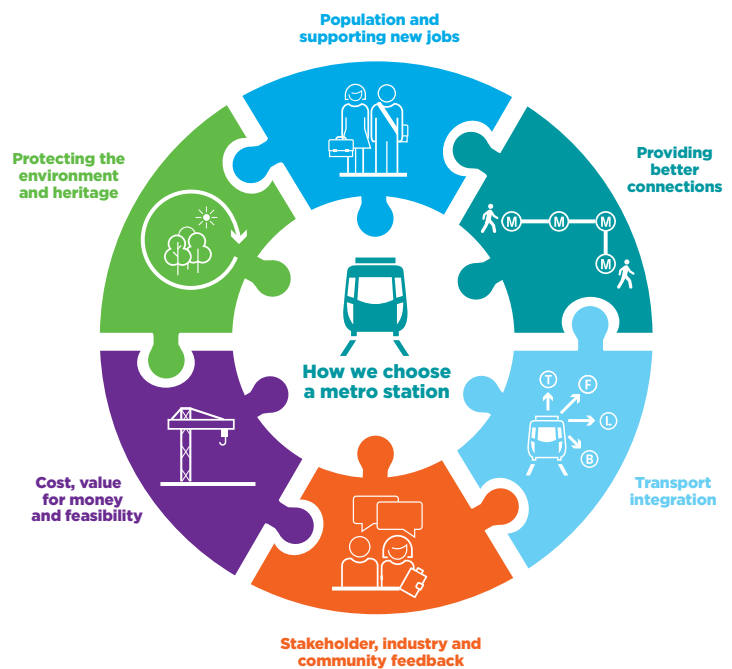
Our assessment considers the feasibility and affordability of the location and what the station may bring to the community like supporting new jobs and homes.

We look at how the station would integrate with the wider transport system and connect to employment and education centres, along with important environmental factors like heritage and the natural environment.

## Shaping your community

New metro stations create opportunities to support the future vision and growth of an area.

Through urban design principles and placemaking, a Sydney Metro station at Pyrmont would be more than somewhere to catch the train. It would become the centre of the community through a variety of uses providing for new development opportunities to support new jobs and houses. New developments around the station precinct could include commercial office spaces, shop fronts, community service and facilities spaces and apartments.



A Sydney Metro community event.

## How to have your say

You can provide feedback by emailing the project team, or by letter, using the contact details below. You can also provide feedback by completing a short survey available using the QR code.

Please contact us, or complete the survey, before **Monday 16 December** to ensure your feedback is considered by Sydney Metro as part of a strategic assessment of an optional metro station at Pyrmont.



Scan to provide feedback

[sydneymetro.info](http://sydneymetro.info)



## Contact us

- 1800 612 173** Community information line open 24 hours
- [sydneymetrowest@transport.nsw.gov.au](mailto:sydneymetrowest@transport.nsw.gov.au)**
- Sydney Metro West, PO Box K659, Haymarket NSW 1240
- If you need an interpreter, contact TIS National on **131 450** and ask them to call **1800 612 173**