



An artist's impression of Parramatta metro station.

# Parramatta update

July 2021

## About Sydney Metro West

Sydney Metro is Australia's biggest public transport project, transforming Sydney with a world-class metro.

Sydney Metro West will double rail capacity between Greater Parramatta and the Sydney CBD, transforming Sydney for generations to come. The once in a century infrastructure investment will have a target travel time of about 20 minutes between Parramatta and the Sydney CBD, link new communities to rail services and support employment growth and housing supply.

Stations have been confirmed at Westmead, Parramatta, Sydney Olympic Park, North Strathfield, Burwood North, Five Dock, The Bays, Pyrmont and the Sydney CBD. Further planning is underway to determine the locations of the Pyrmont and Sydney CBD stations.

## About Parramatta metro station

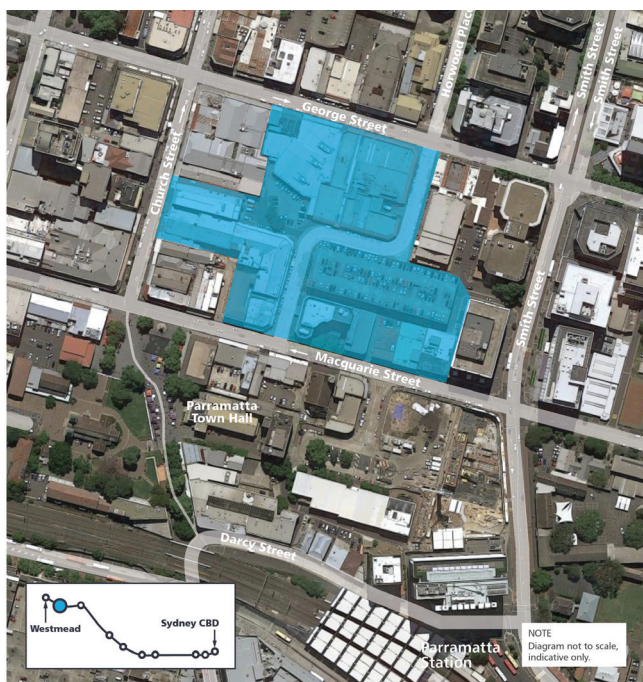
Parramatta metro station will support Parramatta CBD as a major employment growth centre, boosting jobs and improving connections across Greater Sydney. It will provide easy, efficient and accessible interchange with buses and Parramatta Light Rail.

Parramatta metro station will be on the block bounded by George, Macquarie, Church and Smith streets with an entrance proposed on Horwood Place.

Strategically located to the north of the existing Parramatta Station, the new metro will be within the commercial core of the Parramatta CBD, taking pressure off the existing station and giving customers a second rail option.

Sydney Metro has received planning approval for the Sydney Metro West project concept between Westmead and the Sydney CBD and for major construction work between Westmead and The Bays. This means work can now begin to prepare for tunnels and station excavation between Westmead and The Bays. Sydney Metro will advise the community before any works begin.

Learn more about Parramatta metro station here:  
[sydneymetro.info/metrowest](https://sydneymetro.info/metrowest)



■ Proposed construction site for new metro station.



## Closure of the City Centre Car Park on Horwood Place

In October 2019, the site of City Centre Car Park on Horwood Place was identified as being required for the Sydney Metro West project. In order to facilitate construction of Sydney Metro West, the City Centre Car Park will close on **30 September 2021**.

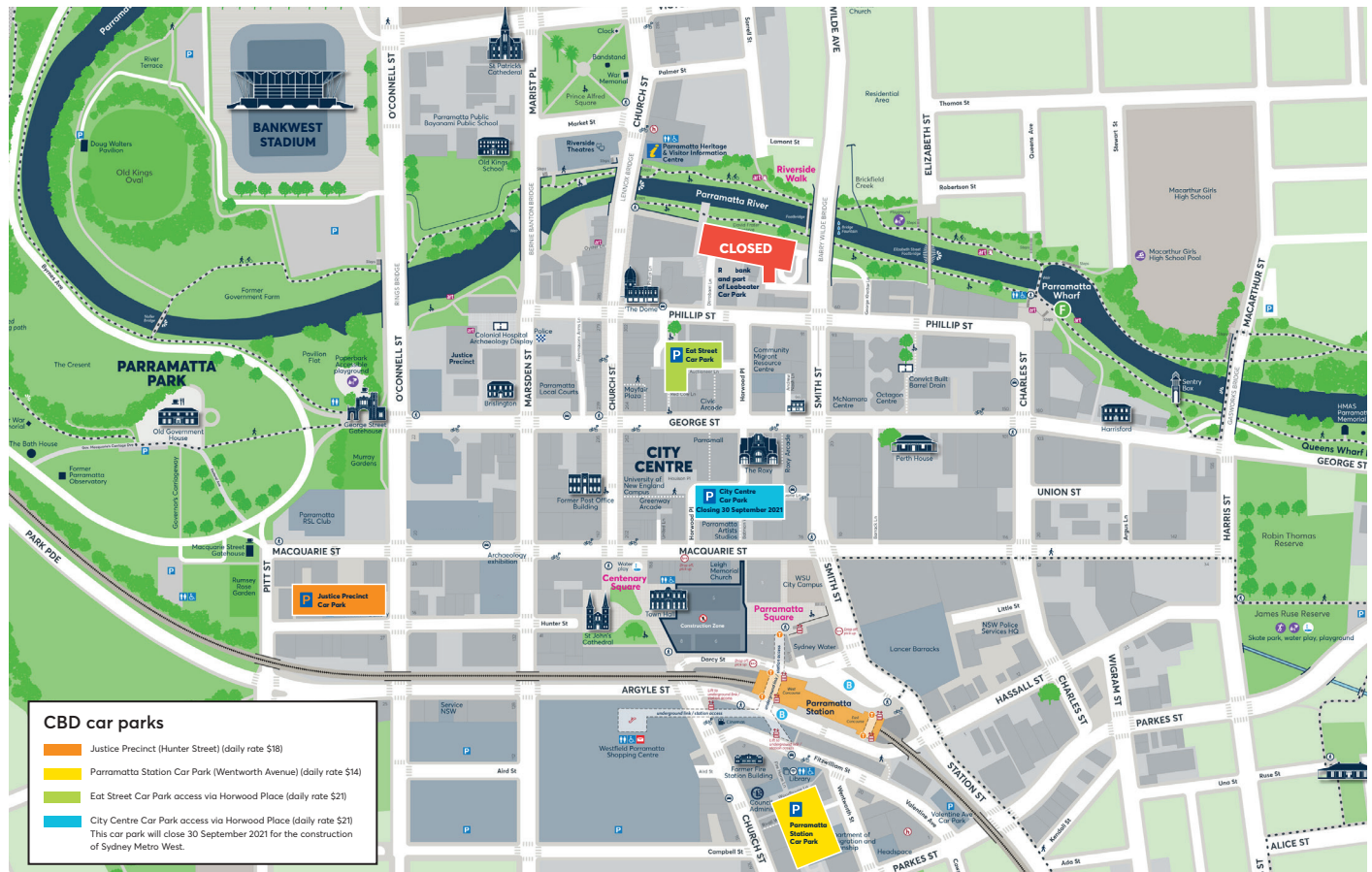
Now is the time to consider where you will park if you are a current patron of the City Centre Car Park.

## Alternative parking

We appreciate changes to parking arrangements may cause the community some inconvenience. There are currently about 3,860 on and off-street parking spaces in the Parramatta Local Government Area. The City of Parramatta operates paid ticket parking in the city centre and North Parramatta.

Nearby alternative off-street parking to the Parramatta city centre is available at:

- Justice Precinct Car Park – Hunter Street
- Parramatta Station Car Park – Wentworth Avenue
- Eat Street Car Park – Erby Street.



Source: City of Parramatta Council map, May 2021.

To find alternative locations near your destination you can search using City of Parramatta Council's Parking Finder tool – [parramatta.spotparking.com.au](http://parramatta.spotparking.com.au)

Visit [sydnymetro.info](http://sydnymetro.info) to learn more about Sydney Metro West and sign up for email alerts.

## Contact us

- 1800 612 173** Community information line open 24 hours
- [sydnymetrowest@transport.nsw.gov.au](mailto:sydnymetrowest@transport.nsw.gov.au)**
- Sydney Metro West**, PO Box K659, Haymarket NSW 1240
- If you need an interpreter, contact TIS National on **131 450** and ask them to call **1800 612 173**

