



The Pitt Street North shaft is now complete and ready for hand over to the follow on contractor

## Pitt Street Station entry shafts complete

John Holland CPB Ghella (JHCPBG) has completed the two deep shafts which will form the entrances for the future Pitt Street Station on the corner of Pitt and Park streets and on the corner of Pitt and Bathurst streets in the Sydney CBD. The sites will be taken over by CPB Contractors for construction of the north and south station buildings.

Underground, the permanent concrete lining for the two platform caverns, six pedestrian tunnels and four service tunnels is now complete. This portion of the site will soon be handed over to CPB Contractors to fit out the station, working closely with Systems Connect (an unincorporated joint venture between CPB Contractors and UGL Limited) who is delivering line-wide work to turn the tunnels into a working railway.



One of the twin underground station caverns beneath Castlereagh Street where the future Sydney Metro trains will pick up and drop off passengers

For the past three years, the Pitt Street tunnelling team has worked hard to safely complete this important and complex work in a busy pedestrian area while minimising community impacts. JHCPBG would like to thank the Sydney CBD community for your interest in the project, for joining us at community open days and for your ongoing support.

Over the course of the Pitt Street Station tunnelling and excavation works more than 10 buildings were demolished, 180,000 cubic metres of rock removed to be reused, 243 ground anchors and 650 rock bolts installed in the station boxes, 70,000 tonnes of concrete poured, and 1,730 metres of piling installed.

Sydney Metro is Australia's biggest public transport project. It will transform Sydney, delivering more trains and faster services for customers across the network.

Sydney Metro City & Southwest extends the new metro network from the end of Sydney Metro Northwest at Chatswood, under Sydney Harbour, through the CBD, and west to Bankstown.

John Holland CPB Ghella (JHCPBG) is building the 15.5 kilometre long twin railway tunnels between Chatswood and Sydenham and excavating six new metro stations.



## Project update along the Sydney Metro City & Southwest alignment

As the tunnelling and station excavation portion of the project nears completion, the JHCPBG team has begun to hand over other sites to follow-on contractors.

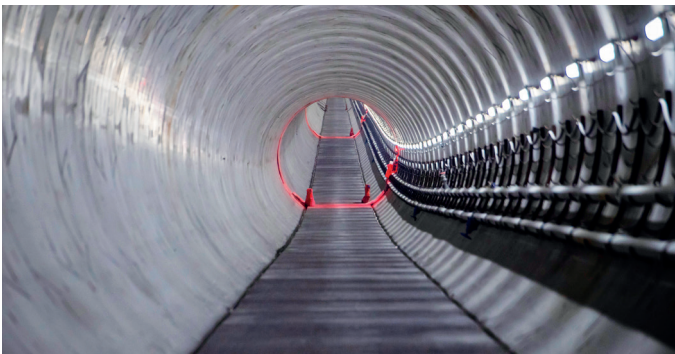
The Chatswood Dive site was recently handed over to the line-wide contractor, Systems Connect, who is now delivering line-wide work to turn the tunnels into a working railway.

The tunnels from the Marrickville Dive site to Pitt Street Station as well as the northern tunnels between Chatswood and Victoria Cross Station were handed over to Systems Connect earlier this year, together with the newly excavated Crows Nest Station.

The Waterloo Station site has been handed over to the integrated station development team who will deliver the new station and Metro Quarter.

Elsewhere, the Martin Place South site was recently handed over to Macquarie Group and their construction contractor, Lendlease who is delivering the integrated station development at Martin Place. The station caverns are in their final phases of work, ready for handover at the end of this year. Major works are underway at the Barangaroo Station site, where the rail crossover cavern is being built to allow the metro trains to switch tracks when fully operational, and work in the under-harbour tunnels is almost complete.

At Victoria Cross Station in North Sydney, the permanent concrete lining of the largest rail cavern in Australia is now complete and the shaft excavation at Victoria Cross South is nearing completion. South of the harbour at the Marrickville stabling yard, work will continue into 2021 to upgrade the stormwater drainage system and utility services in the surrounding area.



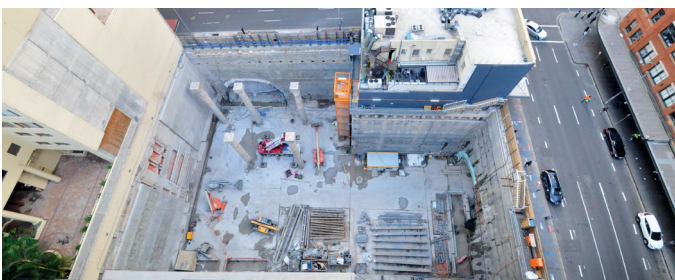
A completed section of tunnel between Crows Nest and Chatswood



The Martin Place South site has now been handed over to the follow on contractor

## Contractor changes at Pitt Street Station site

The JHCPBG team has almost completed tunnelling and excavation work at Pitt Street Station. From mid-November, CPB Contractors will begin site establishment, service investigation and installation work ahead of construction of the new Pitt Street integrated station developments at the north and south sites. Distribution of community notifications and emails detailing these work activities has already begun.









The Pitt Street South shaft is in its final stages of work

## Want to stay up to date?

Register today for community email updates at [pittstreetmetro@transport.nsw.gov.au](mailto:pittstreetmetro@transport.nsw.gov.au).

## Contact us

For more information, enquiries or complaints please contact us at:

-  **1800 171 386** 24-hour community information line
-  [pittstreetmetro@transport.nsw.gov.au](mailto:pittstreetmetro@transport.nsw.gov.au)
-  [sydnymetro.info](http://sydnymetro.info)
-  [www.facebook.com/SydneyMetro](https://www.facebook.com/SydneyMetro)
-  **Sydney Metro City & Southwest**  
PO Box K659, Haymarket NSW 1240
-  If you need an interpreter, call TIS National on **131 450** and ask them to call **1800 171 386**