

Notification – Luddenham Metro Station

Sydney Metro is Australia’s biggest public transport project.

July 2026

Sydney Metro – Western Sydney Airport is the new metro railway line which will service Greater Western Sydney and the new Western Sydney International (Nancy-Bird Walton) Airport. A city-shaping project, the new 23-kilometre metro railway will connect Bradfield City Centre with St Marys in the north – where customers can connect to the existing Sydney Trains suburban T1 Western Line.

Parklife Metro consortium is delivering the Stations, Systems, Trains, Operations and Maintenance (SSTOM) works. See the list below for the work activities at Luddenham during July 2026.

What’s new in July 2026?

- station precinct works
- installation of lighting along the rail alignment above ground and at surface level
- construction of the pedestrian pathway from the pipelines down to Elizabeth Drive.

Ongoing activities include:

Luddenham Metro Station:

- deliveries of machinery and equipment, including heavy vehicle movements to deliver and remove material from site
- preparatory works for the balustrades install at the Platform level on going
- installation of mechanical, electrical and piping equipment in the station building
- iRoof sheeting works to the east canopy ongoing
- waterproofing works on the services building ongoing
- station precinct works (excavation, landscaping, paving, roadworks and utilities)
- ongoing survey works to confirm the design, and verify construction works
- site photography, including using a drone camera above the construction site
- cable pull works for the station and services building ongoing
- Storm water works in progress.

Warragamba Pipeline to Western Sydney Airport (surface and viaduct):

- installation of cable containment and hydrant pipes, including hydrotesting of the pipes
- installation of galvanised steel troughing
- installation of electrical cables at surface level and on the viaduct
- installation of security fencing between the pipelines and Airport Business Park
- construction of the pedestrian pathway from the pipelines down to Elizabeth drive

Work hours:

Standard construction hours are **Monday to Friday** from **7am to 6pm** and **Saturdays** from **8am to 1pm**.

Some work will be required to take place outside our standard construction hours to minimise traffic impacts or to ensure the safety of pedestrians, motorists, and our workers. Out-of-hours work activities will be carried out in line with the project Environmental Protection Licence, Road Occupancy Licences, and Transport for NSW requirements.

Out-of-hours work includes:

- delivery of oversized equipment, machinery and materials
- service utility installations and surveying
- concreting and formwork
- station precinct works
- large concrete pours and finishing works for the lifts, escalators and electrical pits for the main station area and services building.

Impacted surrounding residents and businesses will be notified in advance of any out-of-hours work.

What to expect:

- mitigation measures will be in place to minimise impacts including installing noise blankets where feasible, respite periods during high noise activities, noise and vibration monitoring, and water carts for dust suppression
- increased light and heavy vehicle movements on surrounding roads, and local road closures. All vehicles will be turned off when not in use, non-tonal reversing alarms will be fitted to plant and machinery and trucks will avoid reversing into and on site, where feasible
- intermittent noise from hand tools
- temporary lighting to ensure a safe worksite will be directed away from properties
- communication will be limited to radios only when moving and unloading equipment, with no use of horns or loud radios
- livestock should be monitored, as nearby activity may generate noise that could unsettle animals.

Noise Characteristics:

The characteristics of the noise generated across the project will consist of:

- non-tonal reverse alarms on machinery
- vehicle movement at low speed
- low tonal alarm from crane works
- intermittent noise (small bangs) from hand tools.

Equipment used:

Equipment used will include, but is not limited to tower cranes, excavators, elevated work platforms, pick-and-carry cranes, mobile cranes, forklifts, telehandlers, concrete pumps, concrete trucks, concrete vibrators, water carts, jackhammers, compaction equipment, power generators, vacuum trucks, dewatering pump, handheld tools, lighting towers, light and heavy vehicles.

Three monthly out-of-hours lookahead activities:

Activity	Equipment	Work hours	Timing
SSTOM works - Luddenham Metro Station site			
Oversized plant and equipment deliveries	Traffic management, light and heavy vehicles, generators, lighting towers, and mobile cranes.	10pm to 7am Monday to Friday	Ongoing
Concrete pours and finishing works at Luddenham Station	Concrete pumps, concrete vibrators, concrete trucks, generators, and lighting towers.	6pm to 12am Monday to Friday 1pm to 6pm Saturdays	Ongoing
Station precinct works	Excavators, dozers, dumpers, concrete agitators and vibrators, boom pump, rollers, graders, asphalt paver, bobcats, telehandlers, and hand tools.	1pm to 6pm Saturdays	Ongoing
SSTOM works - Linewide			
Oversized deliveries of plant and materials	oversized trucks, traffic management, light and heavy vehicles, generators, lighting towers and mobile cranes	10pm to 7am Monday to Saturday.	Ongoing – August 2026

Feedback:

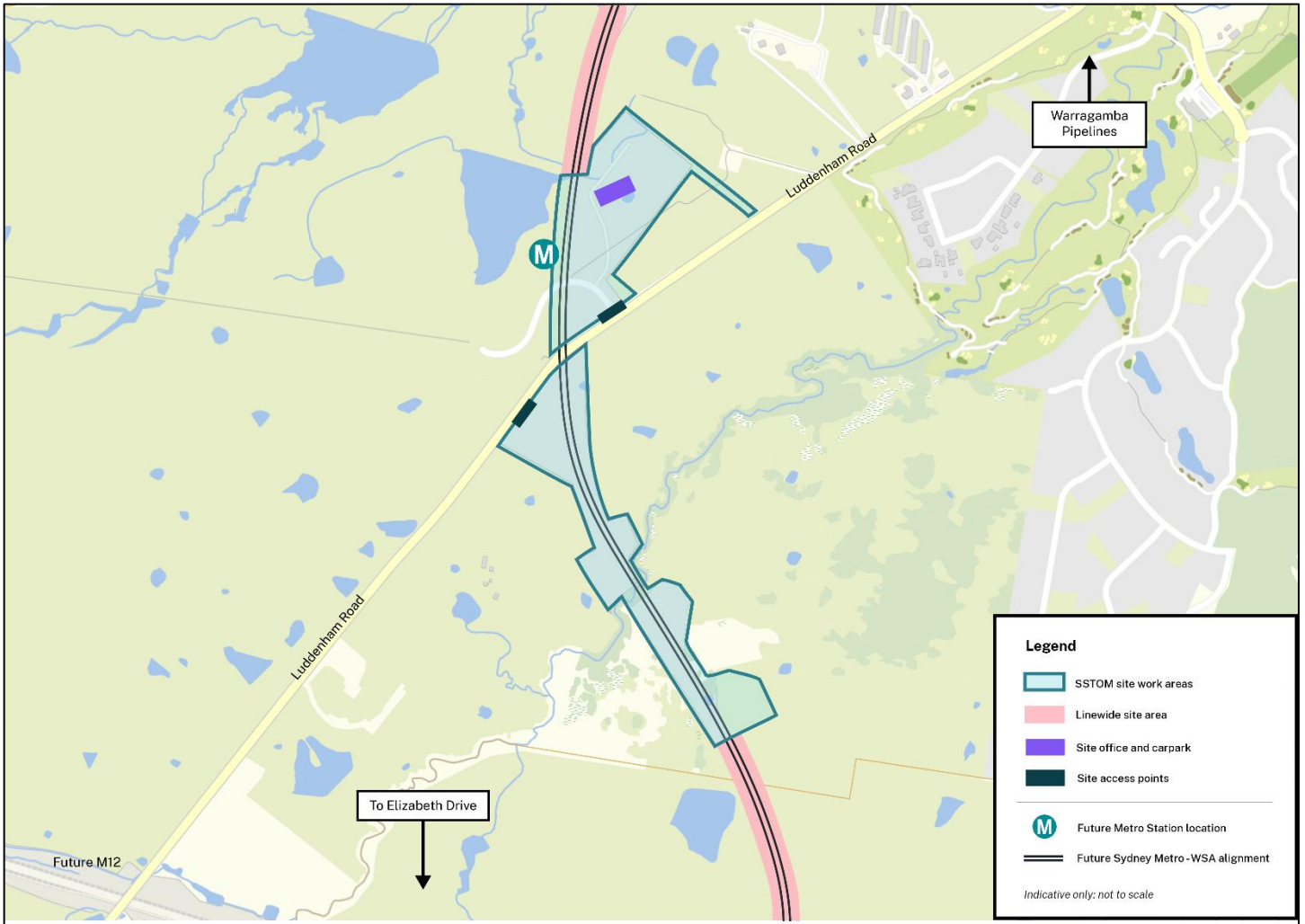
Detailed Noise and Vibration Impact Statements (DNVIS) have been prepared, including proposed mitigation measures based on noise modelling. Your feedback on appropriate respite periods or mitigation measures is encouraged. The SSTOM Community Engagement strategy is online.

Please visit www.parklifemetro.com.au to view these documents and contact us to provide any feedback.

If you would prefer to receive updates by email, please let us know via sydneymetrowsa@transport.nsw.gov.au and we will add you to the distribution list.

Thank you for your cooperation while we complete this essential work.

Luddenham Metro Station and Linewide works location:



Stay connected through the Sydney Metro Connect App.

Access information in over 100 languages Download **Sydney Metro Connect** from the App store™ or get it on Google Play™.

For more information contact



24-hour Community Information Line **1800 717 703**



sydneymetrowsa@transport.nsw.gov.au



Sydney Metro - Western Sydney Airport
PO Box K659, Haymarket NSW 1240



If you need help understanding this information, please contact the Translating and Interpreting Service on **131 450** and ask them to call us on **1800 717 703**.