

Monthly update – Parramatta

25 May 2026

Sydney Metro is Australia's biggest public transport project.

The NSW Government is delivering Sydney Metro West – a new underground metro railway which will double rail capacity between Parramatta and the Sydney CBD, link new communities to rail services and support employment growth and housing supply.

Gamuda Australia and Laing O'Rourke Consortium (GLC) has been awarded the contract to deliver nine kilometres of twin metro rail tunnels between Westmead and Sydney Olympic Park, excavation for two new metro stations, a stabling and maintenance facility at Clyde and a precast facility at Eastern Creek.

Construction activities: June 2026

Tunnelling contractor, GLC will continue major construction at the Parramatta metro station site during June. These activities will be carried out during standard construction hours:

- **Monday to Friday 7am to 6pm and Saturday 8am to 6pm, excluding public holidays.**

Work will involve:

- Removing concrete sections in stages with saw cutters and hydraulic hammers.
- Delivering and removing machinery, equipment, and materials via George Street and Macquarie Lane.
- Constructing the station box including rock hammering, concreting, steel bracing installation, service trenching works, defect close out and support work.
- Lining and waterproofing tunnel components.
- Ongoing surveying, geotechnical investigations, utility investigations and upgrades within and around site.
- Installing electrical equipment and reticulation of electrical cables.
- Aerial drone filming on-site. This will be in line with Civil Aviation Safety Authority guidelines.
- George Street heritage building rectification works requiring scaffold installation and temporary pedestrian diversions.
- Surface drainage works including excavation, concreting, pipes laydown, installation of stormwater pits, and establishing hardstand areas.

Out-of-hours work

To minimise interruption to local traffic and to ensure the safety of motorists, pedestrians and workers around the site, some work must be undertaken outside standard construction hours

Out-of-hours work will involve:

- Oversized machinery and equipment deliveries and removal to and from the site between **6pm and 7am from Monday 1 June to Tuesday 30 June 2026.**
- Operation of tunnelling services, supporting infrastructure, waterproofing and lining the tunnel nozzles within the station box will occur **24 hours a day, seven days a week.**
- Groundwater and surface monitoring within the station box between **6am and 7pm Monday to Friday.**

At times, low impact work may extend beyond standard construction hours including Saturday and Sunday. We will continue to keep you informed of our progress and planned out-of-hours work.

Night-time road closures on Macquarie Lane and Macquarie Street

To support surface drainage works, sections of Macquarie Street and Macquarie Lane will be closed to traffic for **one night in June 2026.** A detailed notification about this work will be distributed to the community separately.

The closure will occur between the intersection of Macquarie Street and Marsden Street, and the intersection of Macquarie Lane and Smith Street, see map overleaf for details.

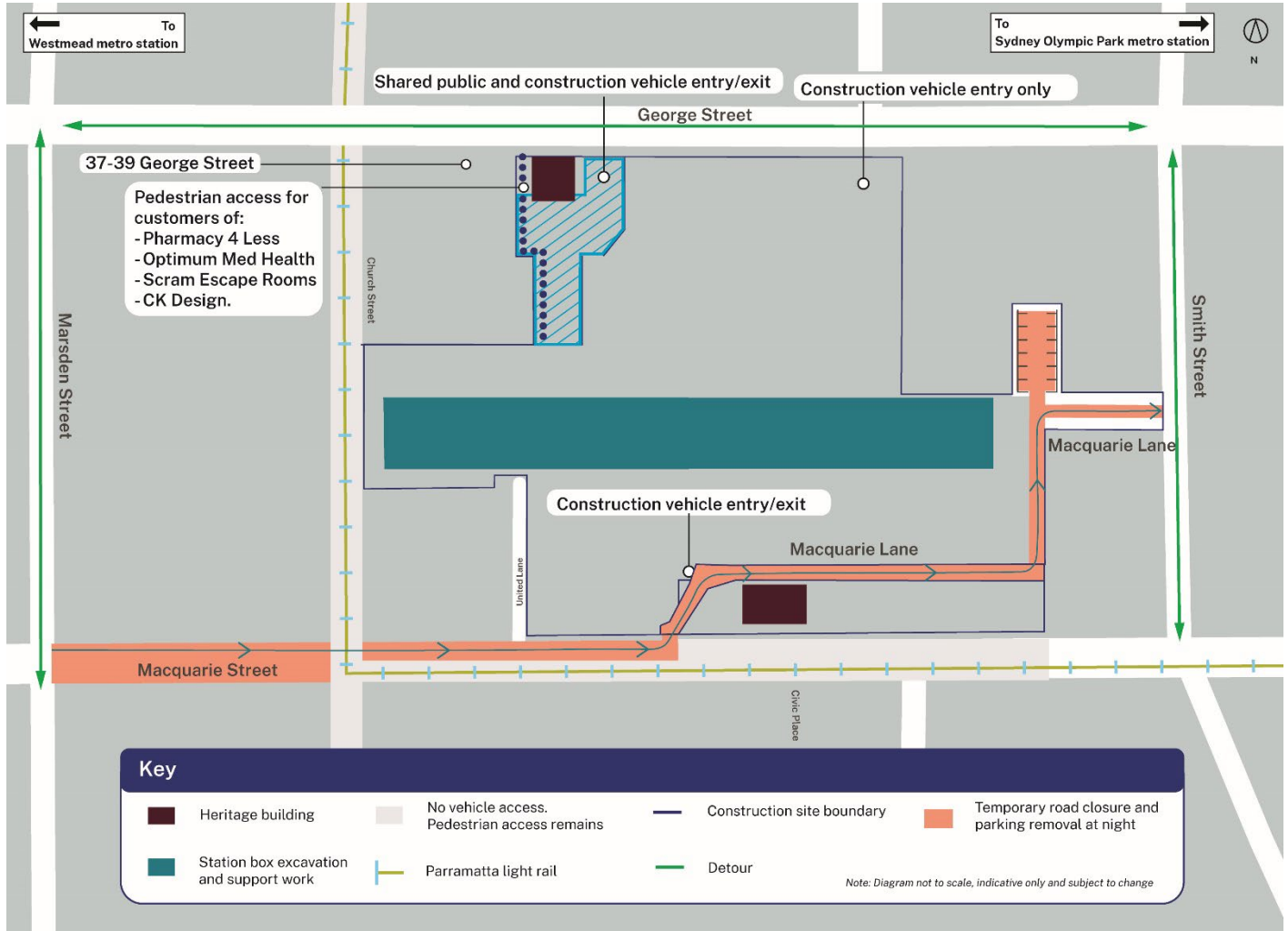
Updates to the construction program, will be provided in our weekly Parramatta email updates. You can subscribe by emailing; metrotunnelsGLC@transport.nsw.gov.au.

What to expect

- Access to businesses will be maintained unless arrangements are made with you in advance.
- Traffic control and signage will be in place in surrounding streets to assist motorists, pedestrians and cyclists with changes to traffic conditions. Please allow some extra time for your journey when travelling near these areas.

Equipment used: Equipment for this work will include but is not limited to hand tools, cranes, generators, truck and dogs, survey equipment, light vehicles, drill rigs, excavators, rock hammer, dozers, vibratory rollers and compactors, concrete agitators, vacuum excavation trucks, tipper trucks, delivery vehicles and traffic control devices.

Parramatta metro station work area



Contact us

Please contact GLC's Community team on **1800 612 173** or by email if you have any questions, complaints or would like to provide feedback about the work, including respite periods. We will continue to keep you updated on the progress of work in your area. If you would prefer to receive updates by email, please send a request to metrotunnelsGLC@transport.nsw.gov.au and we will add you to the distribution list. Thank you for your cooperation while we complete this essential work.

1800 612 173 Community information line open 24 hours

metrotunnelsGLC@transport.nsw.gov.au

Sydney Metro West, PO Box K659, Haymarket NSW 1240



Access information in over 100 languages

Download **Sydney Metro Connect** from the App Store or get it on Google Play.



If you need help understanding this information, please contact the Translating and Interpreting Service on **131 450** and ask them to call us on **1800 612 173**