

# Notification – Orchard Hills Metro Station and the Stabling and Maintenance Facility

Sydney Metro is Australia’s biggest public transport project.

June 2026

Sydney Metro – Western Sydney Airport is the new metro railway line which will service Greater Western Sydney and the new Western Sydney International (Nancy-Bird Walton) Airport. A city-shaping project, the new 23-kilometre metro railway will connect Bradfield City Centre with St Marys in the north – where customers can connect to the existing Sydney Trains suburban T1 Western Line.

Parklife Metro consortium is delivering the Stations, Systems, Trains, Operations and Maintenance (SSTOM) works. See the list below for the work activities at Orchard Hills during June 2026.

## What’s new in June 2026?

- installation of high voltage equipment including transformers and switchgears
- installation of platform screen doors
- cable pulling for high voltage and low voltage cables
- sewer-main construction on Samuel Marsden Road
- Kent Road and Lansdowne Road high voltage relocation works
- internal retaining wall construction for future precinct road.

## Stations, Systems, Trains, Operations and Maintenance work includes:

### Orchard Hills Metro Station:

- mesh installation for roofing works
- completion of all stair cores within the station
- facade works installation for the Northern Services installation of tunnel ventilation system
- HV and LV cable works in progress
- delivery and installation of mechanical, electrical and piping equipment in the station building
- ongoing survey works to confirm the design, and verify construction works
- surveying and geotechnical investigations, including potholing, non-destructive digging and testing along local surrounding roads to inform utility designs
- delivery of over-sized equipment, machinery and materials
- station box finishing works.

### Stabling and Maintenance Facility:

- major earthworks including importing materials, excavations, constructing permanent basin, and compacting of the rail areas
- on-going major drainage works including excavations, installing pits and pipes and backfilling
- site-wide concrete works, including formwork and steel fixing for various building structures
- combined services route and trunk services installation
- continuation of works on the permanent access road

- installation of steel structures and blockwork to minor buildings
- mechanical, electrical, plumbing and architectural finishes activities in the minor buildings
- continuation of track installation scope
- rail adjustments and welding works
- ongoing deliveries of materials, machinery and equipment
- welding of railway track on site
- installation of light poles, overhead catenary structures and signalling equipment
- security fencing installation
- commencement of landscaping works.

### **Linewise work – Orchard Hills to Warragamba Pipeline**

- service utility installations and surveying
- concreting and formwork along the track alignment
- combined service route installations
- installation of light pole footings and light pole structure
- installation of overhead wire structure and cable pulling
- installation of hydrant piping and hydro testing
- cable pulling along the alignment
- ongoing deliveries of materials, machinery and equipment to the site compounds at Kent Road
- installation of rail exclusion zones
- active transport corridor road and bridge construction works.

### **Other works in the area:**

#### **Bush regeneration works**

- inspection and assessment of sites for planned future works
- removal of weeds by hand and using hand tools
- spot spraying of herbicides
- use of chainsaws to cut woody weeds and applying herbicide to the cut surface (“cut and paint” method)
- use of brushcutters for targeted slashing.

### **Work hours:**

Standard construction hours are **Monday to Friday** from **7am to 6pm** and **Saturdays** from **8am to 1pm**.

Some work will be required to take place outside our standard construction hours to minimise traffic impacts or to ensure the safety of pedestrians, motorists and our workers. Out-of-hours work activities will be carried out in line with the project Environmental Protection Licence, Road Occupancy Licences, and Transport for NSW requirements.

## Out-of-hours work includes:

- delivery of oversized equipment, machinery and materials
- 24/7 tunnel-related activities
- extended work hours for excavation, formwork, reinforcement and concrete pour, steel fixing, concrete pours and concrete finishing works inside the station box at the Orchard Hills site and at the Stabling Maintenance Facility across various structures including the Operations Control Centre (OCC) and Maintenance and Administration Building (M&A)
- dewatering activities at the Orchard Hills and Stabling Maintenance Facility sites
- internal fit-out of buildings
- external roofing and cladding
- service utility installations and surveying

*Impacted surrounding residents and businesses will be notified in advance of any out-of-hours work.*

## What to expect:

- mitigation measures will be in place to minimise impacts including installing noise blankets where feasible, respite periods during high noise activities, noise and vibration monitoring, and water carts for dust suppression
- increased light and heavy vehicle movements on surrounding roads, and local road closures. All vehicles will be turned off when not in use, non-tonal reversing alarms will be fitted to plant and machinery and trucks will avoid reversing into and on site, where feasible
- temporary lighting to ensure a safe worksite will be directed away from properties
- communication will be limited to radios only when moving and unloading equipment, with no use of horns or loud radios
- traffic control and signage to safely assist motorists, pedestrians, and cyclists
- livestock should be monitored, as nearby activity may generate noise that could unsettle animals.

## Noise Characteristics:

The characteristics of the noise generated across the project will consist of:

- non-tonal reverse alarms on machinery
- vehicle movement at low speed
- low tonal alarm from crane works
- intermittent noise (small bangs) from hand tools.

## Equipment used:

Equipment used will include, but is not limited to, excavators, cranes, dozers, graders, rollers, vacuum truck, water carts, heavy and light site vehicles, generators, survey equipment, traffic management devices, concrete agitators, pneumatic drills, concrete saws, bobcats, chainsaws, telehandlers, rail saw, rail shears, rail grinders, sand blaster, front end loaders, water pumps, track tamper, non-powered and powered hand tools (including hammers and drills), franna crane, GenSet, Elevated Working Platforms (EWPs) and light vehicles.

## Changes to traffic, pedestrian, and cyclist routes:

During these works, traffic control will be in place to assist motorists, pedestrians, and cyclists with any changes to traffic conditions. This may include contraflow (managed directional changes to the flow of traffic) and stop-slow traffic controls. The time of these changes will vary and are dependent on road authority approvals.

Access to driveways and buildings will be maintained at all times. Residents will be separately notified if access to driveways is affected, or access to private property is required.

## Three-month out-of-hours lookahead activities:

Activity	Equipment	Work hours	Timing
<b>SSTOM works – Orchard Hills Metro Station site</b>			
<b>Works within the station box to support the tunnel and underground station box fit out</b>	Gantry Crane (Electric), telehandler, excavator, front end loader, hand drills and cable pulling.	<b>24 hours a day, seven days a week</b>	Ongoing – 2026
<b>Installation, incoming and outgoing deliveries of oversized construction material</b>	Oversize, over mass (OSOM) franna, mobile crane, gantry crane (Electric), telehandler, excavator, front end, loader, hand drills.	<b>10pm to 7am, Monday to Saturday.</b>	Ongoing – 2026
<b>SSTOM works – Stabling Maintenance Facility site</b>			
<b>Additional construction hours and extension includes:</b> <ul style="list-style-type: none"> <li>• earthworks</li> <li>• rail track construction</li> <li>• overhead wiring</li> <li>• concreting</li> <li>• external building construction</li> </ul>	Excavators, dump trucks, graders, compactors, rollers, dozers, elevated work platforms, mobile cranes, front end loader, telehandlers/forklifts, water carts, heavy and light vehicles, tamper, hand tools, rattle guns, concrete agitators, pumps, vibrators and generators.	<b>6am to 7am, Monday to Friday (inclusive) 7am to 8am and 1pm to 6pm, Saturdays.</b>	Ongoing – June 2026
<b>Extended work hours for use of oversized plant and equipment activities</b>	Traffic management, light and heavy vehicles, generators, lighting towers and mobile cranes.	<b>10pm to 7am, Monday to Saturday</b>	Ongoing – 2026
<b>Operational Control Centre and Substation Internal fit out</b>	Elevated work platforms, powered/non-powered hand tools, generators.	<b>24 hours a day, 7 days a week</b>	Ongoing - 2026
<b>SSTOM works – Linewide</b>			
<b>All tunnel activities</b>	Concrete placement unit (CPU), concrete agitator, concrete pump, powered hand tools, survey equipment, light vehicles, forklifts, telehandlers, powered hand tools.	<b>24 hours a day, seven days a week</b>	Ongoing – August 2026

## Feedback:

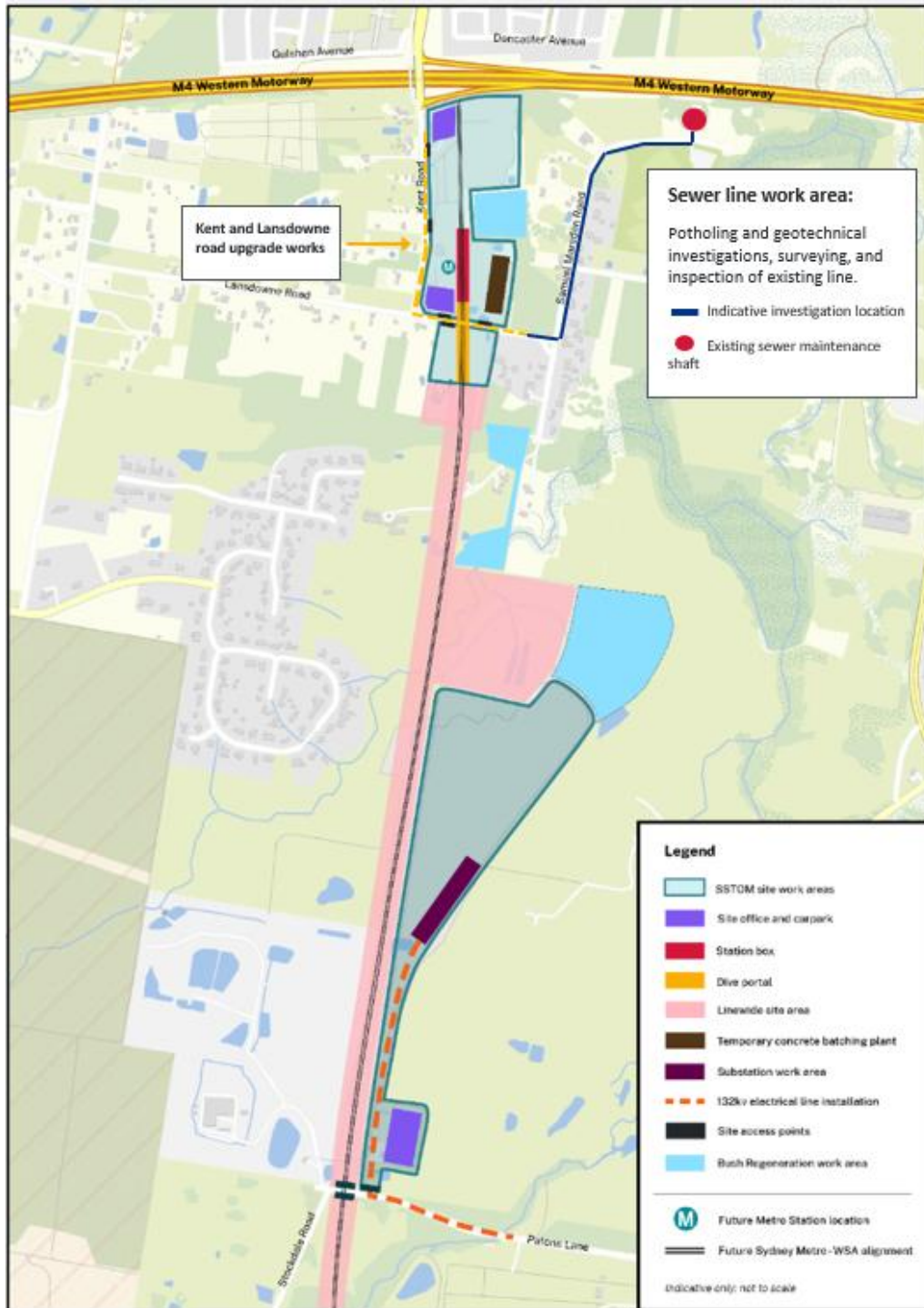
Detailed Noise and Vibration Impact Statements (DNVIS) have been prepared, including proposed mitigation measures based on noise modelling. Your feedback on appropriate respite periods or mitigation measures is encouraged. The SSTOM Community Engagement strategy is online.

Please visit [parklifemetro.com.au](http://parklifemetro.com.au) to view these documents and contact us to provide any feedback.

If you would prefer to receive updates by email, please let us know via [sydneymetrowsa@transport.nsw.gov.au](mailto:sydneymetrowsa@transport.nsw.gov.au) and we will add you to the distribution list.

Thank you for your cooperation while we complete this essential work.

## Work areas:



Stay connected through the Sydney Metro Connect App.

Access information in over 100 languages Download **Sydney Metro Connect** from the App store™ or get it on Google Play™.

## For more information contact



24-hour Community Information Line **1800 717 703**



**sydneymetrowsa@transport.nsw.gov.au**



Sydney Metro - Western Sydney Airport  
PO Box K659, Haymarket NSW 1240



If you need help understanding this information, please contact the Translating and Interpreting Service on **131 450** and ask them to call us on **1800 717 703**.