

Notification – Bradfield Metro Station

Sydney Metro is Australia’s biggest public transport project.

May 2026

Sydney Metro – Western Sydney Airport is the new metro railway line which will service Greater Western Sydney and the new Western Sydney International (Nancy-Bird Walton) Airport. A city-shaping project, the new 23-kilometre metro railway will connect Bradfield city centre with St Marys in the north – where customers connect to the existing Sydney Trains suburban T1 Western Line.

Parklife Metro consortium is delivering the Stations, Systems, Trains, Operations and Maintenance (SSTOM) works. See the list below for the work activities at Bradfield Metro Station during May 2026.

Ongoing activities include:

Bradfield Metro Station works:

- continued formwork, steel fixing, and concrete pours inside the station box to construct the station walls, floors and supporting structures, and drainage pits
- delivery and installation of pre-cast beams and planks
- delivery and installation of blockwork, mechanical, electrical, piping equipment and machinery
- ongoing excavations, drainage and essential services work for the station commuter carpark and precinct
- site photography, including using drone camera above the construction site.

Linewise works:

- installation of overhead wire system and utilities in the tunnels to continue.
- ongoing installation of electrical and communications cables and signalling equipment in the tunnels and at surface level.
- Delivery and preparation for platform screen doors installation

Out-of-hours work includes:

- ongoing deliveries of oversized equipment and machinery
- steel fixing inside the station box
- delivery and installation of precast concrete beams and planks
- cable pulling inside the tunnels
- concreting and tunnel fit-out works
- large concrete pours and concrete finishing works inside the station box.

Impacted surrounding residents and businesses will be notified in advance of any out-of-hours work.

Work hours:

Standard construction hours are **Monday to Friday from 7am to 6pm** and **Saturdays from 8am to 1pm**.

Some work will be required to take place outside our standard construction hours to minimise traffic impacts or to ensure the safety of pedestrians, motorists, and our workers.

Out-of-hours work activities will be carried out in line with the project Environmental Protection Licence, Road Occupancy Licences, and Transport for NSW requirements.

What to expect:

- work and equipment used in these work activities may generate some noise, vibration, and dust
- mitigation measures will be in place to minimise impacts including installing noise blankets, where feasible, respite periods during high noise activities, noise and vibration monitoring, and water carts for dust suppression
- increased light and heavy vehicle movements on surrounding roads. All vehicles will be turned off when not in use, non-tonal reversing alarms will be fitted to plant and machinery and trucks will avoid reversing into and on site, where feasible
- temporary lighting to ensure a safe worksite will be directed away from properties
- communication will be limited to radios only when moving and unloading equipment, with no use of horns or loud radios.

Noise characteristics:

The characteristics of the noise generated across the project will consist of:

- non-tonal reverse alarms on machinery
- vehicle movement at low speed
- low tonal alarm from crane works
- intermittent noise (small bangs) from hand tools.

Equipment used:

Equipment used will include, but is not limited to, tower crane, excavators, elevated work platforms, pick and carry cranes, mobile cranes, forklifts, telehandler, concrete pumps, concrete trucks, concrete vibrators, water carts, jackhammers, compaction equipment, power generators, vacuum trucks, dewatering pumps, handheld tools, lighting towers, light and heavy vehicles, and traffic management equipment.

Changes to traffic, pedestrian and cyclist routes:

During these works, traffic control will be in place to assist motorists, pedestrians, and cyclists with any changes to traffic conditions. This may include changes to direction of traffic and stop-slow traffic controls. The times of these changes will vary and are dependent on road authority approvals. Access to driveways and buildings will always be maintained. Residents will be separately notified if access to driveways will be affected or access to private property is requested.

Three-monthly out-of-hours lookahead activities:

Activity	Equipment	Work hours	Timing
Oversized plant and equipment deliveries	Traffic management, light and heavy vehicles, generators, lighting towers and mobile cranes	As required - 10pm to 7am, Monday to Friday	Ongoing – December 2026
Concrete pours and steel fixing - station walls	Concrete pump, vibrators, concrete trucks, generators, lighting towers and concrete deliveries	5am to 7am and 6pm to 10pm Monday to Friday 6am to 8am and 1pm to 6pm, Saturdays	Ongoing – August 2026
Concrete finishing works inside the station box	Power floats, hand tools, light vehicles and lighting towers	As required – 7am to 12am (midnight), Monday to Friday	Ongoing – August 2026
Delivery and installation of precast concrete beams and planks	Mobile cranes, oversized trucks, traffic management, light and heavy vehicles, generators and lighting towers	As required - 12am (midnight) to 7am, Monday to Friday	Ongoing – August 2026

Linewide: All tunnel activities	powered hand tools, survey equipment, light vehicles, forklifts, telehandlers, powered hand tools.	24 hours a day, seven days a week	Ongoing – August 2026
--	--	--	-----------------------

**Activities associated with tunnelling operate 24 hours a day, 7 days per week*

Feedback:

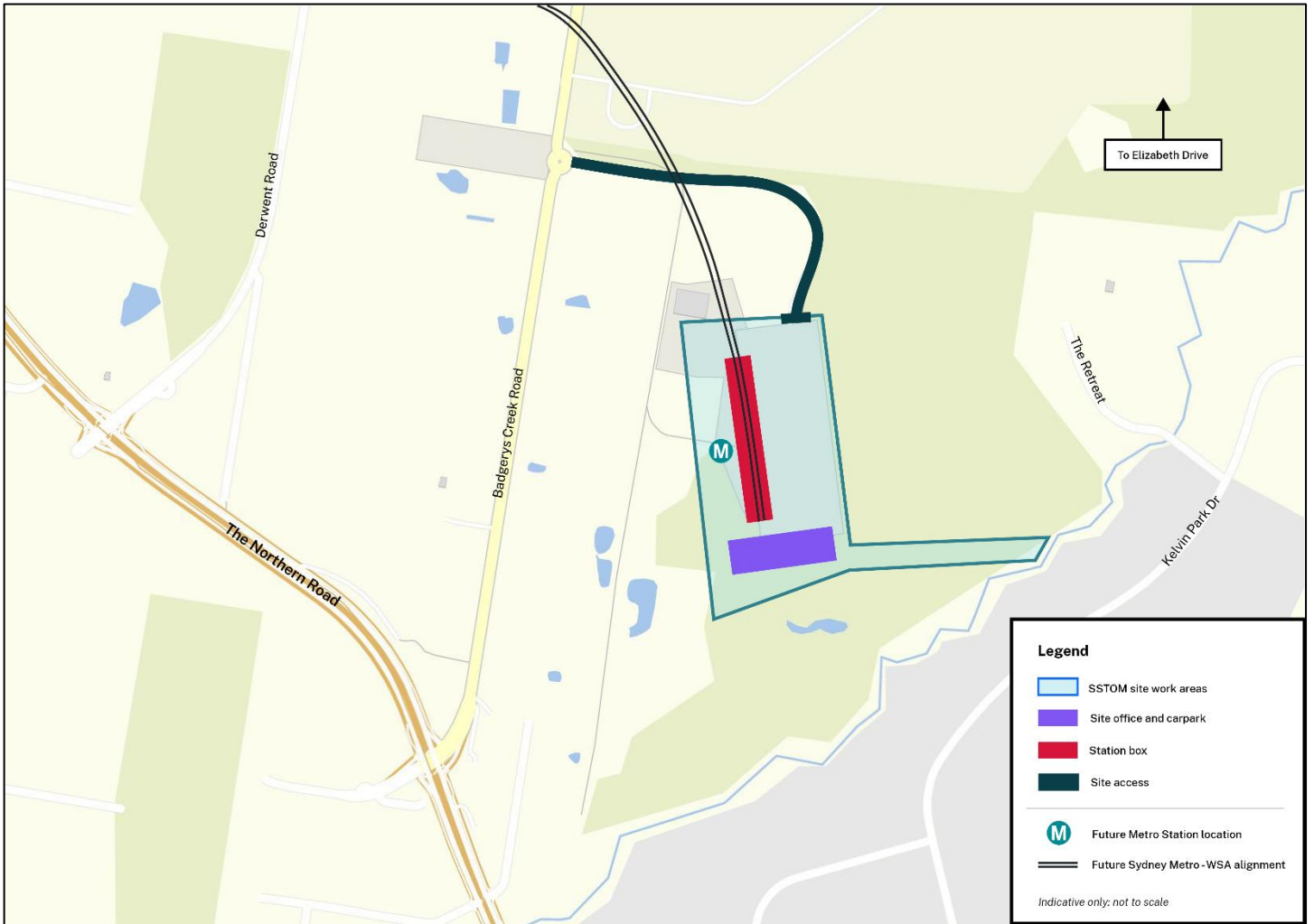
Detailed Noise and Vibration Impact Statements (DNVIS) have been prepared, including proposed mitigation measures based on noise modelling. Your feedback on appropriate respite periods or mitigation measures is encouraged. The SSTOM Community Communications Strategy is online.

Please visit www.parklifemetro.com.au to view these documents and contact us to provide any feedback.

If you would prefer to receive updates by email, please let us know via sydneymetrowsa@transport.nsw.gov.au and we will add you to the distribution list.

Thank you for your cooperation while we complete this essential work.

Bradfield Metro Station work location



Stay connected through the Sydney Metro Connect App.

Access information in over 100 languages Download **Sydney Metro Connect** from the App store™ or get it on Google Play™.

For more information contact



24-hour Community Information Line **1800 717 703**



sydneymetrowsa@transport.nsw.gov.au



Sydney Metro - Western Sydney Airport
PO Box K659, Haymarket NSW 1240



If you need help understanding this information, please contact the Translating and Interpreting Service on **131 450** and ask them to call us on **1800 717 703**.