

Mr Rob Sherry
Team Leader Compliance – Government Projects
Department of Planning, Housing and Infrastructure
Locked Bag 5022
PARRAMATTA NSW 2124

7 October 2025

Ref:201208-ER_DPHI-September 2025

Dear Rob

RE: Sydney Metro - Sydney Metro West SSI - ER Monthly Report for September 2025

Healthy Buildings International (HBI) submits this report to the Secretary in accordance with:

- Condition A30 (k) of the Sydney Metro West, Concept and Stage 1 SSI 10038 Approval (11 March 2021), and associated modifications (MOD 1 - 28 July 2021, MOD 2 - 3 June 2022, MOD3 – 4 July 2022, MOD 4 - 23 December 2022, MOD 5 – 20 September 2023 and MOD 6 – 6 November 2024); and
- Condition A32(k) of the Sydney Metro West – The Bays to Sydney CBD SSI 19238057 Approval (24 August 2022) and associated modifications (MOD 1 – April 2023, MOD 2 – October 2023, and MOD 3 – November 2024)
- Condition A33 (k) of the Sydney Metro West – Rail Infrastructure, Stations, Precincts and Operations SSI 22765520 Approval (25 January 2023)

The attached summary details the key activities undertaken by Environmental Representatives for Sydney Metro – Sydney Metro West for the month of September 2025.

Yours sincerely

Jo Robertson
Environmental Representative

Cc:

DPHI: Major Projects Portal

Sydney Metro: John Ieroklis, Maria Doumit, Andrew Hendy, Cath Snelgrove, Ari Stypel, Ryan Butler, Syed Shah, Valerie Lebon, Sarah Lepre

Contractors: Anne Anderson (AFJV), Steph Mifsud (GLC), Sally Reynolds (JCG)

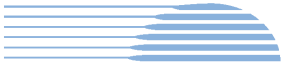


Table of Contents

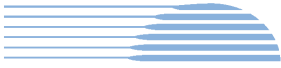
1	Phase B - Central Tunnelling Package (Stage 1)	5
1.1	Key Construction Activities During the Period	5
1.2	Key Construction Activities Look Ahead	6
1.3	ER Inspections	6
1.3.1	Photos	6
1.4	Endorsed Documents	7
1.5	Complaints	7
1.6	Compliance	7
1.6.1	Incidents	7
1.6.2	Non-compliance and Potential Non Compliance	8
1.6.3	Audits	8
1.7	Looking Forward – Core Focus Areas	8
2	Phase F – Western Tunnelling Package (Stage 1)	9
2.1	Key Construction Activities During the Period	9
2.2	Construction Activities Look Ahead	10
2.3	ER Inspections	10
2.3.1	Photos	11
2.4	Endorsed Documents	13
2.5	Complaints	13
2.5.1	Incidents	13
2.5.2	Non-compliance	13
2.5.3	Audits	13
2.6	Looking Forward – Core Focus Area	13
3	Phase G – Eastern Tunnel Package (Stage 2)	14
3.1	Key Construction Related Activities During the Period	14
3.2	Key Construction Activities Look Ahead	15
3.3	ER Inspections	15
3.3.1	Photos	16
3.4	Endorsed document/s	17
3.5	Complaints	17
3.6	Compliance	18
3.6.1	Incidents	18
3.6.2	Non-compliance	18
3.6.3	Audits	18
3.7	Looking Forward – Core Focus Areas	18



4	Phase H2 – Five Dock Overhead to Underground Relocation Works (Stage 1)	19
4.1	Key Construction Activities During the Period	19
4.2	Key Construction Activities Look Ahead.....	19
4.3	ER Inspections	19
4.3.1	Photos	19
4.4	Endorsed Document/s.....	19
4.5	Complaints	20
4.6	Compliance.....	20
4.6.1	Incidents.....	20
4.6.2	Non-compliance	20
4.6.3	Audits	20
4.7	Looking Forward – Core Focus Area.....	20
5	Phase J – North Strathfield Power Enabling Works (Stage 1)	21
5.1	Key Construction Activities During the Period	21
5.2	Key Construction Activities Look Ahead.....	21
5.3	ER Inspections	21
5.3.1	Photos	21
5.4	Endorsed Document/s.....	21
5.5	Complaints	21
5.6	Compliance.....	22
5.6.1	Incidents.....	22
5.6.2	Non-compliance	22
5.6.3	Audits	22
5.7	Looking Forward – Core Focus Area.....	22
6	Phase L – Rosehill Power Enabling Works (Stage 3)	23
6.1	Key Construction Activities During the Period	23
6.2	Key Construction Activities Look Ahead.....	23
6.3	ER Inspections	23
6.3.1	Photos	23
6.4	Endorsed Document/s.....	23
6.5	Complaints	24
6.6	Compliance.....	24
6.6.1	Incidents.....	24
6.6.2	Non-compliance	24



6.6.3	Audits	24
6.7	Looking Forward – Core Focus Area	24
7	Sydney Metro Retained Obligations and Other Activity	25
7.1	Key Construction Activities During the Period	25
7.2	Key Construction Activities Look Ahead	25
7.3	ER Inspections	25
7.3.1	Photos	25
7.4	Endorsed Document/s	25
7.5	Complaints	25
7.6	Compliance	25
7.6.1	Incidents	25
7.6.2	Non-compliance	25
7.6.3	Audits	25
8	Statement of Limitations	26
9	Appendix A – ER Document Endorsement Records (ETP only)	27
10	Appendix B – ER Document Endorsement Records (Stage 3 only)	28



1 PHASE B - CENTRAL TUNNELLING PACKAGE (STAGE 1)

The Environmental Representatives for Phase B of Sydney Metro West are:

- Michael Woolley
- Maulik Bapodara
- Swathi Gowda
- Jo Robertson

Phase B – Central Tunnelling Package (CTP) is being delivered by Acciona Ferrovia Joint Venture (AFJV). Phase B of Sydney Metro West has been further broken into:

- Phase B1: Civil works
- Phase B2: Tunnelling works

The AFJV hold EPL 21610 for this Phase of works. Activities defined as Phase B2-Tunneling Works in the Staging Report for Metro West commenced during the November 2022 reporting period at Burwood North. Substantial Construction has been achieved under the CTP contract for the remaining sites. Rectification works were completed during the previous reporting period. AFJV are now acting in a Transitional Handover Services capacity that comprises ongoing maintenance activities and specific works as required of Sydney Metro.

1.1 Key Construction Activities During the Period

The Bays

- Operation of the water treatment plant and management/maintenance of areas handed over including the tunnels.
- Works continued to relocate two Temporary Tunnel Service pits within the station box in front of the tunnels.

Five Dock

- East and West Shaft sites: AFJV undertook concrete pours for a ramp to tunnels at the Eastern site. Runoff water in the shafts is automatically pumped to the Bays for treatment.
- Use of house ongoing at 21 Waterview Street adjacent the eastern shaft by Sydney Metro personnel.

Burwood North

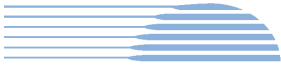
- Deliveries and unloading of items to the surface. Removal of items post completion of the rectification works.
- Water treatment plant not operating – general maintenance activities only.
- South Shaft: Removal of all sheds except for one toilet block.

North Strathfield

- No works at the site which was locked up and no personnel on site permanently.
- Pumping of water from the station box to the Bays for treatment and discharge.

Sydney Olympic Park

- Tunnel maintenance ongoing with minor repairs as required.
- Use of a workshop and laydown of materials at the surface for tunnellers



- Remaining site sheds are being used to accommodate the workforce and remaining people from the Project Delivery Office which has been vacated.

AFJV continue to manage all sites (except much of the Bays which has been handed over to ETP Contractors).

1.2 Key Construction Activities Look Ahead

- Ongoing activities as described above
- Some defect works ongoing across some sites and in the tunnels.
- Ongoing operation of the water treatment plant at the Bays with water discharges ongoing.
- Ongoing management/maintenance/caretaking of sites.
- Planned removal of walkway on the west of the shaft at Five Dock west.

1.3 ER Inspections

There were two ER inspections conducted during the reporting period on Thursday 11th and Thursday 25th September. Currently inspections are held fortnightly, with each site being inspected monthly. No actions were raised.

1.3.1 Photos

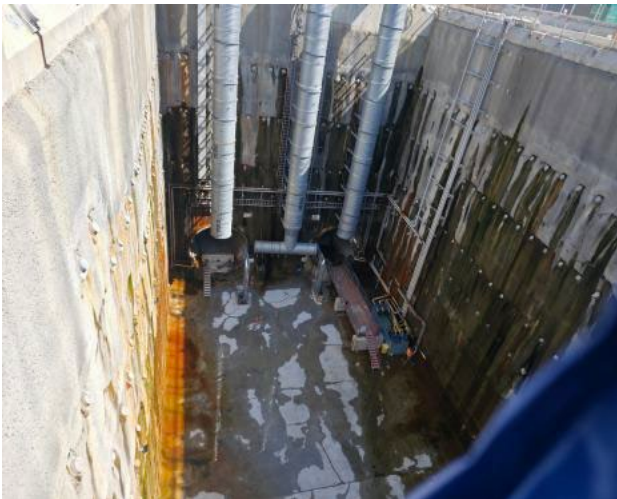


Figure 1.1 Station Box (The Bays). Tunnel support activities ongoing.



Figure 1.2 The water treatment plant operating at the Bays (The Bays).

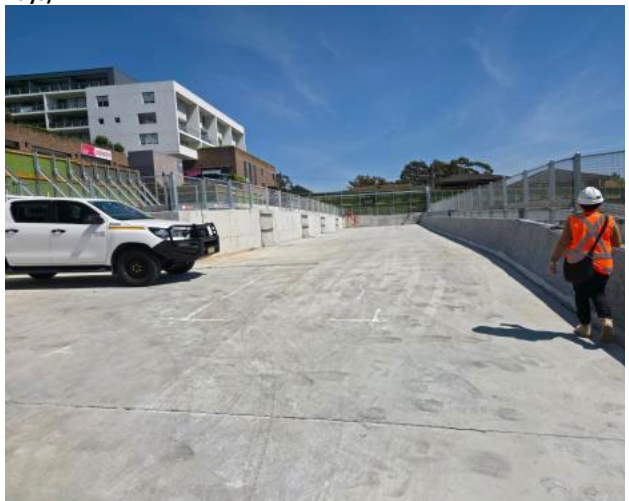


Figure 1.3 Eastern Shaft – Tunnel ramp related concrete pours ongoing. Ongoing repairs and maintenance activities (Five Dock).



Figure 1.4 Western Shaft – works completed - maintenance activities ongoing (Five Dock).



Figure 1.5 Ongoing maintenance activities in the nozzles (Burwood North).



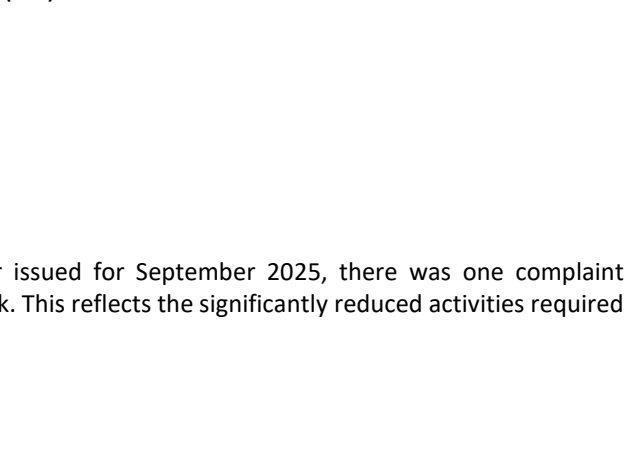
Figure 1.6 Automatic pumping systems were observed to be working in the rain (Burwood North).



Figure 1.7 No works observed in the station box at North Strathfield (NS).



Figure 1.8 No works were occurring in the station box at the time of the site visit. Some plant and materials stored in the station box. (SOP).



1.4 Endorsed Documents

Nil

1.5 Complaints

Based on the monthly Sydney Metro Complaint Register issued for September 2025, there was one complaint unrelated to Sydney Metro activities at Sydney Olympic Park. This reflects the significantly reduced activities required during THS.

1.6 Compliance

1.6.1 Incidents

No incidents as defined in the Infrastructure Approval were reported by AFJV during the reporting period.



1.6.2 Non-compliance and Potential Non Compliance

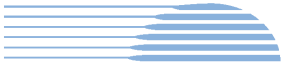
No non compliances were raised by AFJV or Sydney Metro during the reporting period and none were observed by the ER.

1.6.3 Audits

An Independent Environmental Audit for the Metro West project including CTP was conducted during August 2025.

1.7 Looking Forward – Core Focus Areas

- Ongoing management of sites during Transitional Handover Services.



2 PHASE F – WESTERN TUNNELLING PACKAGE (STAGE 1)

The Environmental Representatives for Phase F of Sydney Metro West are:

- Swathi Gowda
- George Kollias
- Michael Woolley
- Maulik Bapodara
- Jo Robertson

Phase F – Western Tunnelling Package (WTP) is being delivered by Gamuda Australia Laing O’Rourke Consortium (GLC).

GLC are constructing this Phase of Sydney metro West under EPL 21676.

2.1 Key Construction Activities During the Period

During the reporting period, the following activities were being undertaken at Westmead, Parramatta and the Clyde stabling and maintenance facility which includes the Rosehill, Clyde Dive and Clyde MSF construction sites:

Westmead

- Concrete defect repairs
- Station Cavern headwall installation and steel fixing/scaffold installation
- Station Cavern arch formwork OOH (deliveries only) and installation
- TBM 1 Operations (traverse and dismantle)
- Local Area Works Priddle Street

Parramatta

- Station Box:
 - TBM1 broken through at Westmead
 - TBM2 enroute towards Westmead
 - D-wall repairs
 - Material loadout recommenced
- Archaeology:
 - Zone 8c, 9a and 9b - Archaeological investigation and clearance works completed
- Other works
 - George St Heritage Shops – finalisation of mould remediation works
 - Macquarie Lane Diversion Works

Rosehill

- TBM1 has broken through at Westmead
- TBM2 enroute towards Westmead
- Cross passage excavation in process at XP85
- Water Treatment Plant operation including off-site discharge is ongoing
- TBM material being taken off-site

Clyde Dive

- Lining Erecting Machine (LEM) operations completed and demobilisation of supporting equipment commenced
- Caverns and Cross Passage of spur tunnels FRP ongoing



- Demolition of Acoustic Shed completed
- Bulk earth works commenced, including back fill of the shaft
- Retaining wall works continuing, piling complete with precast panels being installed

Clyde MSF

- Close out of defects across Unwin St and Fleet St
- Trimming and final earth works ongoing
- Landscaping ongoing
- MSF Crib shed repositioning works
- Excess fill materials being disposed off-site for reuse

SOP

- Handed over on 15 April 2025

2.2 Construction Activities Look Ahead

The key construction activities planned are similar to those listed in Section 2.1, with the addition of the following:

- Various OOHW (conducted under EPL)
- Westmead – Demobilisation of CWTP at Westmead (proposed in October 2025)

2.3 ER Inspections

Currently, the sites are divided into two groups and visited typically fortnightly (weather permitting) for ER inspections. The two groups are:

- Parramatta and Westmead
- Clyde Dive, Clyde MSF and Rosehill

Five ER inspections were conducted during the reporting period (1, 3, 10, 17 and 24 September 2025); with opportunities for improvement (OFIs) identified and the following actions (summarised) raised during the month:

Parramatta, Westmead and Rosehill

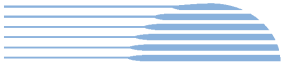
- Nil

Clyde Dive

- Clyde Dive - Swale Drain: Raised action to clean-up some oil observed within swale drain with existing controls (surface water run-off from James Ruse Drive).

Clyde MSF

- MSF East: Raised action to remove some sediment build-up on concrete causeway, around controls established.



2.3.1 Photos



Figure 2.1- Parramatta Site: Vent fans installed in operation.



Figure 2.2 - Parramatta Site: Backfilling and compaction works.



Figure 2.3 – Parramatta Site: Western Station Box – excavation works underway.

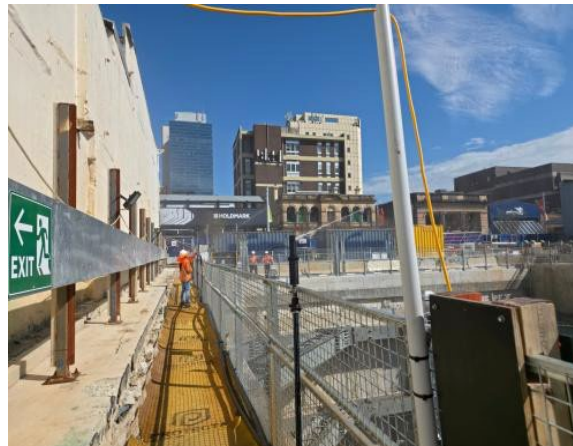


Figure 2.4 – Parramatta Site: Western Station Box – excavation works underway; with misters in operation for dust suppression.



Figure 2.5 – Parramatta Site: Dismantling of previous site office sheds and amenities.



Figure 2.6 – Rosehill Site: Base slab FRP works in progress at the time of inspection.

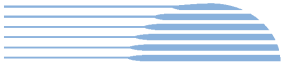


Figure 2.7 – Clyde MSF: Security fence installation and landscaping works continuing around flood basin.



Figure 2.8 – Clyde MSF: Security fence and jute mesh installation works.



Figure 2.9 – Clyde Dive: Shaft backfilling works.



Figure 2.10 – Clyde Dive: Observed wet down of hardstand areas.



Figure 2.11 – Clyde Dive: Removal of concrete hardstand areas.



Figure 2.12 – Clyde Dive: Retaining wall with pre-cast panels installed along section of ATC boundary.



2.4 Endorsed Documents

The following documents were approved or endorsed by the ER during the reporting period:

- Nil

Note: Six-monthly construction monitoring reports reviewed for noise and vibration, surface water and groundwater monitoring.

2.5 Complaints

Based on the Sydney Metro Complaint Register for September 2025, there was one complaint reported during the month, compared to four complaints in August 2025. Complaint recorded in September 2025, was deemed as not related to SM activities as per the Complaints Register.

2.5.1 Incidents

No incidents considered to represent Incidents as defined under the Infrastructure Approval were reported to or observed by the ER during the reporting period.

Two Class 3 incidents (related to spills) reported under GLC/SM reporting system during the reporting period.

2.5.2 Non-compliance

Nil non-compliances reported to the ER during the reporting period.

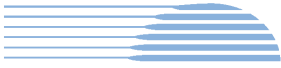
2.5.3 Audits

Independent Environmental Audit (IEA) for the Metro West project including WTP was conducted in August 2025. It is understood that a draft IEA Report has been received by Auditees, with final IEA due to be submitted in October 2025.

2.6 Looking Forward – Core Focus Area

The core focus areas for works (including upcoming works) are:

- Westmead - Hawkesbury/Priddle Street intersection works (OOHW September/October 2025 school holiday period)
- Parramatta – Relining of sewer network (OOHW - dates TBC)
- Clyde MSF - Progressive stabilisation activities of portions of site
- Clyde Dive - Bulk earth works including back filling of the shaft, removal of hard stand areas and continuing retaining wall works (eastern boundary)
- Utility works along local roads in the vicinity of Clyde MSF to relocate High Voltage and Low Voltage (HV/LV) route



3 PHASE G – EASTERN TUNNEL PACKAGE (STAGE 2)

The Sydney Metro West Eastern Tunnel Package is Stage 2 of the Sydney Metro West CSSI and is described as major civil construction works between The Bays and Sydney CBD, including station excavation at Pyrmont and Hunter Street and tunnel excavation between the Bays and Hunter Street. Stage 2 (SSI 19238057) was approved on the 24 August 2022.

The Environmental Representatives for the Sydney Metro West Eastern Tunnel Package are:

- Michael Woolley
- Maulik Bapodara
- Swathi Gowda
- Jo Robertson

The Eastern Tunnelling Package (ETP) is being delivered by John Holland CPB Ghella Joint Venture (JCG) with the contract being awarded in November 2022. Sydney Metro notified DPHI that the date of commencement of construction was 17 March 2023. JCG have received Environmental Protection Licence (EPL 21784) for the project.

3.1 Key Construction Related Activities During the Period

Works conducted during the reporting period included:

Hunter Street East:

- Ongoing excavation and wall support of the southern portion of the site adjoining Hunter Street. Excavation with rock hammers occurring 7 days per week.
- Ongoing removal of the remaining items of the former acoustic shed.
- Wall support works along the site boundary with O'Connell Street including rock anchor drilling and installation and FRP works.
- Ongoing concrete deliveries and FRP activities for pours in the caverns. Use of air ventilation systems and other tunnelling support activities for works in the caverns.
- Use of the steel deck with access driveways to O'Connell Street and Hunter Street for load out of spoil using kibble and unloading frame.
- Use of the crib sheds and offices over Richard Johnson Square. Painting of the underside of the structure white for better lighting at night.
- Use of the new water treatment plant under the steel deck.

Hunter Street West:

- Removal of the ramp at the eastern access to Hunter Street.
- Construction of the steel deck.
- Wall support around the perimeter of the excavation with shotcrete and rock anchors.
- Ongoing sporadic excavation of selected sections of the shaft. Storage of spoil from the ramp in the southern area of site.
- Strengthening activities at the Skinner's Hotel during standard and OOHs.
- Management of water in rainy conditions.
- Ongoing deliveries and pedestrian management along Hunter Street.
- Milligan's development continued on the site adjacent Hunter Street West with scaffolding set up around the largest building on the corner of Pitt Street and Hunter Street prior to its demolition.

Pyrmont East:

- Ongoing preparation for re-launch of the TBMs with TBMs traversed across the caverns with TBM Ruby now in the Nozzle.
- Kibbles and load out structures removed from the Pyrmont East site, hence all spoil now being removed from Pyrmont West.
- Ongoing use of the tunnel ventilation system.



- Use of site amenities/sheds on the steel deck to the east of the acoustic shed and use of one lane on Union Street for storage of containers and a sub-station.
- Ongoing treatment of water generated from tunnelling activities and groundwater. Discharge of treated water to stormwater system.
- Decommissioning of the water treatment plant with all water being directed to the Bays for treatment.

Pymont West:

- Completion of TBM traverse.
- Ongoing excavation of the shaft using rock hammers – near completed.
- Ongoing excavation of the services adit by Road Header. A scrubber unit was set up to treat dust from the operation.
- Use of profiler to excavate the invert for the caverns.
- Ongoing use of the kibble for loading out spoil onto trucks. Trucks exiting to Pymont Street.
- Drainage of water to the tunnelling operations.

The Bays:

- TBM traversing, hence slurry plant was not operating. Ongoing construction of cross passages XP8-XP12 with excavation now completed for these cross passages.
- Water treatment and discharge using the construction water treatment plant.
- Maintenance of the slurry treatment plant; spoil shed and related equipment while the TBM is not tunnelling.
- Receipt and storage of spoil from Hunter Street and Pymont sites and load out spoil.
- General support activities such as in the workshops, segment delivery and storage and use of site offices.
- Use of the truck marshalling area by trucks waiting to load up and/or attend other project sites.
- Use of a new staff car parking area on the former CTP spoil shed area.

3.2 Key Construction Activities Look Ahead

The below works are planned to occur in the following reporting period:

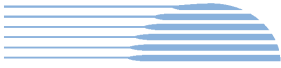
- Planned hammering works in the caverns into the evening period commenced for two months at Pymont, with two weeks of works proposed to extend across the nighttime period at the eastern end of the station cavern.
- Ongoing activities as described above.
- Ongoing traverse of the TBMs across the caverns and shafts and re-commencement of TBM tunnelling.
- Ongoing excavation of the caverns invert. Load out of spoil.
- Ongoing removal of the slab and footings of the former shed at Hunter East.
- Excavation of the shafts at the Hunter Street sites 7 days per week.
- Ongoing construction of cross passages in the tunnel between Pymont and the Bays.
- Planning for tunnelling and cross passage works along the alignment between Pymont and Hunter Street.

3.3 ER Inspections

Four ER inspections were conducted during the reporting period on each Tuesday in September. The following action was raised during the inspections:

- Action raised in relation to cigarette butts outside the Hunter West site in public area. Litter observed at Hunter Street East site and The Bays carpark.

JCG were responsive to ER feedback during inspections and for the close out of actions raised.



3.3.1 Photos



Figure 3.1 Hunter Street East: Former Acoustic Shed area. Ongoing works related to wall support along the O'Connell Street boundary.



Figure 3.2 Hunter Street East: Excavation adjacent Hunter Street and load out of spoil from the steel deck.



Figure 3.3 Hunter St West: Steel deck construction complete. Crane established on steel deck and in use. Kibble loading frame installed.



Figure 3.4 Hunter Street West: Strengthening works at Skinner's Hotel nearing completion.



Figure 3.5 Pyrmont East: TBM Ruby had started tunnelling in the previous week and was 3 rings into rock. TBM Jessie was in place in the Nozzle having completed the traverse through the shaft. The profiler was operating in the caverns with spoil being removed to the Bays.



Figure 3.6 Pyrmont East: Both TBMs traversed through the caverns.

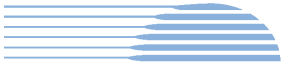


Figure 3.7 Pymont West: Load out of spoil ongoing.



Figure 3.8 Pymont West: Services adit.



Figure 3.9 The Bays: A spoil stockpile area has been set up under the segment shed to receive and handle spoil loadout to the shed.

3.4 Endorsed document/s

The following documents were signed, approved or endorsed during the reporting period.

- Truck Marshalling Ancillary Facility Update – 4/9/2025
- Minor Ancillary Facility – Glebe Island Bridge – 15/9/2025

A Minor Ancillary Facility for additional material storage and construction support works at Glebe Island Bridge was endorsed by the ER. Truck Marshalling Ancillary Facility Checklist was updated during the reporting period by JCG and endorsed by the ER.

3.5 Complaints

In September 2025, Sydney Metro's monthly complaint register recorded twelve complaints which is an increase from nine complaints reported in August.

Six of the complaints related to the Hunter Street sites. Three of these related to noise from OOHWS with one from noise during standard hours. One complaint was related to Visual Amenity and one related to consultation.

Six complaints related to noise at Pymont. Four of these was for OOHWS, one for noise during standard hours and one for cumulative noise over all periods/consultation.



3.6 Compliance

3.6.1 Incidents

No incidents considered to represent an Incident as defined under the Project Approval were reported to the ER during the reporting period.

3.6.2 Non-compliance

No Non-Compliance reports (NCRs) were issued by JCG or Sydney Metro and no NCRs were raised by the ER during the period.

3.6.3 Audits

An Independent Environmental Audit was conducted for the Metro West project in August which included ETP activities.

3.7 Looking Forward – Core Focus Areas

In the next reporting period, the ER will be focused on:

- General monitoring of construction activities
- Noise associated with excavation of the Hunter Street shafts
- Review of planned OOHWs at Pyrmont
- Interactions of activities with neighbouring developments at Hunter Street



4 PHASE H2 – FIVE DOCK OVERHEAD TO UNDERGROUND RELOCATION WORKS (STAGE 1)

With the ER endorsement and submission to the Planning Secretary of the Sydney Metro West Stage 1 Phasing Report Rev 2.0, the **Phase H2 Five Dock Overhead to Underground Relocation Works** commenced as a package of works. This package will be delivered by Quickway Constructions with the contract being awarded in July 2025. Sydney Metro will notify DPHI of the date of commencement of construction, proposed for November 2025. Low Impact Works commenced in September 2025.

Phase H2 will involve the removal of two wooden power poles and the relocation of one wooden power pole. Electrical works on the Ausgrid network including underground relocation of five bays of overhead wiring outside of the Five Dock eastern construction site, along Second Avenue and Waterview Street, Five Dock. The scope of works will also involve installation of three pillars and four street light poles with service connections to nine private properties at Waterview Street and Second Avenue. The trenching works to install underground electrical services will occur within the roadway and footpaths of Waterview Street and Second Avenue. The excavation depth would be between 500mm to 1000mm below ground level and trenches would vary in width up to 950mm.

The ancillary facility at Silverwater used for Phase H1 will also be utilised for Phase H2 as a laydown area. A minor ancillary facility may be established at the Five Dock worksite for minor storage.

The Environmental Representatives for the Sydney Metro Stage 1 Phase H2 Package are:

- George Kollias
- Jo Robertson

4.1 Key Construction Activities During the Period

Investigative works commenced on Monday 15th September 2025. Works include excavating slit trenches and potholes to locate services and determine ground conditions, lifting service pits by non-mechanical and mechanical means, mark out service locations, waste classification sampling, site clean-up and demobilisation. OOHW works were undertaken amongst these Low Impact Works, commencing Thursday 25th September 2025.

4.2 Key Construction Activities Look Ahead

Project Plans including CEMP, NVMP and associated documents are currently being developed, reviewed and submitted for approval. Construction commencement is scheduled for November 2025.

4.3 ER Inspections

Nil ER Inspections during the reporting period. ER Inspection will commence with the commencement of construction, unless a risk presents itself during Low Impact Works.

4.3.1 Photos

Not applicable as there were no inspections.

4.4 Endorsed Document/s

- Noise and Vibration Management Plan (NVMP) Rev 4 – ER endorsement 25/09/25

The CTMP has received Operations Planning (TfNSW) approval 18/09/25 and was issued to DPHI for information on 23/09/25. The HVLR Rev B was issued to DPHI for approval 12/09/25. The CPAS Rev B was issued to DPHI for approval 23/09/25.



4.5 Complaints

One complaint (no. 6380) was received for the Low Impact Works being undertaken as day-time works on 24/09/25. Resident alleged dust mitigation measures were not in place and that dust from Sydney Metro utility relocation site investigation work had settled onto his car and property. Contractor undertaking site investigation works in area confirmed dust mitigation measures had been in place such as using water sawing and wet vac to avoid creating dust. Place Manager confirmed with contractor that activities had taken place approximately 50 metres from resident's property. Additionally, resident expressed dissatisfaction with respite offer for upcoming out-of-hours work. Place Manager confirmed additional respite options were on offer such as cinema vouchers and noise-cancelling headphones.

One complaint (no. 6386) was received regarding payments for Alternative Accommodation including bond and parking. The Sydney Metro Place Manager contacted the booking agency to clarify details and resolve this issue.

4.6 Compliance

Nil.

4.6.1 Incidents

Nil.

4.6.2 Non-compliance

Nil.

4.6.3 Audits

Nil.

4.7 Looking Forward – Core Focus Area

Development of Project Plans and required documents, for ER / AA endorsement, ER Approval (as required) and/or Planning Secretary approval (as required).



5 PHASE J – NORTH STRATHFIELD POWER ENABLING WORKS (STAGE 1)

With the ER endorsement and submission to the Planning Secretary of the Sydney Metro West Stage 1 Phasing Report Rev 1.8, the **Phase J North Strathfield Power Enabling Works** commenced as a package of works. This package will be delivered by Syscon with the contract being awarded in August 2025. Sydney Metro will notify DPHI of the date of commencement of construction, proposed for November 2025. Low Impact Works are proposed from early October 2025.

Phase J will involve a small portion of electrical works that has been transferred from the Central Tunnelling Package (Phase B) to Phase J relating to the establishment of an electrical kiosk at North Strathfield to provide high voltage power to the site for follow-on contractors. The Principal Contractor undertaking Phase J will be responsible for completing the design for this scope and conducting the remaining works.

The majority of the work to establish a high voltage power connection has been completed by the Phase B Principal Contractor and only requires modifications to the end connection points at the kiosk and the live mains. The North Strathfield Power Enabling Works includes the following physical activities: investigations to establish locations of existing utilities; retrenching for low voltage (LV) works; and installation of electrical kiosk including internal reticulation and outage preparation works.

The Environmental Representatives for the Sydney Metro Stage 1 Phase J Package are:

- George Kollias
- Jo Robertson

5.1 Key Construction Activities During the Period

Low Impact Works have been proposed, to undertake survey works both on and off-site, pre-construction dilapidation photos/video and investigative testing of the electrical kiosk that is already on the site to ensure that it is functioning as required. Low Impact Works have been proposed, with a commencement date of 08/10/25.

5.2 Key Construction Activities Look Ahead

Project Plans including CEMP, NVMP, CTMP and associated documents are currently being developed. Construction commencement is scheduled for late November / early December pending approvals.

5.3 ER Inspections

Nil ER Inspections during the reporting period.

5.3.1 Photos

Not applicable as there were no inspections.

5.4 Endorsed Document/s

Nil documents endorsed this period.

5.5 Complaints

Nil.



HBI Healthy Buildings International Pty Ltd

5.6 Compliance

Nil.

5.6.1 Incidents

Nil.

5.6.2 Non-compliance

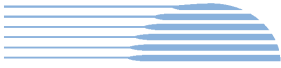
Nil.

5.6.3 Audits

Nil.

5.7 Looking Forward – Core Focus Area

Development of Project Plans and required documents, for ER / AA endorsement, ER Approval (as required) and/or Planning Secretary approval (as required).



6 PHASE L – ROSEHILL POWER ENABLING WORKS (STAGE 3)

The Sydney Metro West Stage 3 of the planning approval process (including tunnel fit-out, station building and fit-out, operation and maintenance) for Sydney Metro West, application number SSI-22765520, was approved on 25 January 2023.

Sydney Metro submitted the Sydney Metro West Stage 3 - Phasing Report (Rev 1.0) to the Planning Secretary in August 2025. The **Rosehill Power Enabling Works (Phase L)** works deemed early works, under the Stage 3 approval are required to ensure follow on contractors' access to site and risk removal associated with delays. **Phase L** is being delivered by Quickway Construction Pty Ltd with the contract being awarded in August 2025.

The Environmental Representatives for the Sydney Metro Stage 3 Package are:

- Swathi Gowda
- Jo Robertson
- Michael Woolley
- Maulik Bapodara

6.1 Key Construction Activities During the Period

The ER is not aware of any construction activities during the period.

6.2 Key Construction Activities Look Ahead

It is understood that low impact early investigative works prior to trenching the alignment are scheduled to commence with an indicative date of 7 October 2025.

Main construction activities are targeted to commence late November 2025.

6.3 ER Inspections

As no work have occurred, no ER Inspections during the reporting period.

6.3.1 Photos

Not applicable as there were no inspections.

6.4 Endorsed Document/s

The West – Rail Infrastructure, stations, precincts and operations (Stage 3) Out-of-hours Work Protocol Version 6 (dated 03/09/2025) was submitted to DPHI on 12/09/2025. The ER and AA were consulted in the preparation of this document under E28. The OOHW Protocol was endorsed by the AA (30/07/25).

The ER has received the following draft documents for review and comment.

- Sydney Metro West – Rosehill HV Conduit Installations - Construction Environmental Management Plan (CEMP) 4567-ENV-PLN-01, Revision 01, 15 September 2025
- Sydney Metro West – Rosehill High Voltage Conduit Installation Project - Heavy Vehicle use of Local Roads (HVLR) Application, Document Number 4567-SMW-HVLR-01, Version A, September 2025
- Sydney Metro West – Rosehill High Voltage Conduit Installation Project, Construction Parking and Access Strategy (CPAS), Document Number 4567-SMW-CPAS-01 Version A September 2025



Sydney Metro also approved the MNL compliant Low Impact works for Clyde / Rosehill pothole / slit trenching early works investigations (Rev 4.0 – 25/09/2025) on the 30 September 2025.

6.5 Complaints

Nil.

6.6 Compliance

6.6.1 Incidents

Nil.

6.6.2 Non-compliance

Nil.

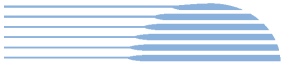
6.6.3 Audits

Nil.

6.7 Looking Forward – Core Focus Area

Low impact works scheduled to commence in October 2025 (NML compliant).

Ongoing review, comment and then endorsement as relevant of the CEMP, and other documents such as the CNVMP as required by the approved Phasing Report to enable Construction.



7 SYDNEY METRO RETAINED OBLIGATIONS AND OTHER ACTIVITY

The Environmental Representatives for the Sydney Metro Retained Obligations and other Activities are:

- Swathi Gowda
- Jo Robertson

The Sydney Metro Retained Obligations and other Activities, refers to any activities where responsibility for completion has been retained by Sydney Metro outside of the main work packages. These works typically do not require an EPL and are often low risk, exempt or administrative in nature.

7.1 Key Construction Activities During the Period

The ER is not aware of other Sydney Metro managed construction activities during the period.

7.2 Key Construction Activities Look Ahead

The ER is not aware of other Sydney Metro managed upcoming construction activities.

7.3 ER Inspections

As there were no construction works, there were no ER Inspections during the reporting period.

7.3.1 Photos

Not applicable as there were no inspections.

7.4 Endorsed Document/s

Sydney Metro approved the Low Impact works for Clyde / Rosehill pothole / slit trenching early works investigations (Rev 4.0 – 25/09/2025) on the 30 September 2025.

7.5 Complaints

No complaints have been reported to the ER during the reporting period.

7.6 Compliance

7.6.1 Incidents

No incidents have been reported to the ER during the reporting period.

7.6.2 Non-compliance

No non compliances have been reported to the ER during the reporting period.

7.6.3 Audits

Independent Audits are reported (where relevant) in other sections of this Monthly Report.



8 STATEMENT OF LIMITATIONS

Healthy Buildings International (HBI) has prepared this report in accordance with the requirements of:

- Condition A30(k) of the Sydney Metro West, Concept and Stage 1 SSI 10038 Approval (11 March 2021),
- Condition A32(k) of the Sydney Metro West – The Bays to Sydney CBD SSI 19238057 Approval (24 August 2022), and
- Condition A33 (k) of the Sydney Metro West – Rail Infrastructure, Stations, Precincts and Operations SSI 22765520 Approval (25 January 2023)

The report is for the sole purposes of Department of Planning, Housing and Infrastructure (DPHI) and Sydney Metro. It has been prepared based on generally accepted practices and standards at the time it was prepared. No other warranty, expressed or implied, is made as to the professional advice included in this Report. This report did not assess any aspects relating to safety.

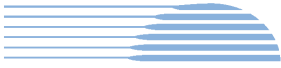
Where the Report indicates that information has been provided to HBI by third parties, HBI assumes no liability for any inaccuracies in or omissions to that information.

This Report was prepared based on the conditions encountered and information reviewed at this time. HBI disclaims responsibility for any changes that may have occurred after this time.

This Report should be read in full. No responsibility is accepted for use of any part of this report in any other context or for any other purpose or by third parties. This Report does not purport to give legal advice. Legal advice can only be given by qualified legal practitioners.

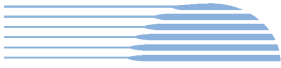
Except as required by law, no third party may use or rely on this Report unless otherwise agreed by HBI in writing. Except as specifically stated in this section, HBI does not authorise the use or findings of this Report by any third party.

To the extent permitted by law, HBI expressly disclaims and excludes liability for any loss, damage, cost or expenses suffered by any third party relating to or resulting from the use of, or reliance on, any information contained in this Report. HBI does not admit that any action, liability or claim may exist or be available to any third party.



9 APPENDIX A – ER DOCUMENT ENDORSEMENT RECORDS (ETP ONLY)

- Truck Marshalling Ancillary Facility Update – 4/9/2025
- Minor Ancillary Facility – Glebe Island Bridge – 15/9/2025



HBI Healthy Buildings International Pty Ltd

10 APPENDIX B – ER DOCUMENT ENDORSEMENT RECORDS (STAGE 3 ONLY)

Nil