

Mr Rob Sherry
Team Leader Compliance – Government Projects
Department of Planning, Housing and Infrastructure
Locked Bag 5022
PARRAMATTA NSW 2124

7 November 2025
Ref:201208-ER_DPHI-October 2025

Dear Rob

RE: Sydney Metro - Sydney Metro West SSI - ER Monthly Report for October 2025

Healthy Buildings International (HBI) submits this report to the Secretary in accordance with:

- Condition A30 (k) of the Sydney Metro West, Concept and Stage 1 SSI 10038 Approval (11 March 2021), and associated modifications (MOD 1 - 28 July 2021, MOD 2 - 3 June 2022, MOD3 – 4 July 2022, MOD 4 - 23 December 2022, MOD 5 – 20 September 2023 and MOD 6 – 6 November 2024); and
- Condition A32(k) of the Sydney Metro West – The Bays to Sydney CBD SSI 19238057 Approval (24 August 2022) and associated modifications (MOD 1 – April 2023, MOD 2 – October 2023, and MOD 3 – November 2024)
- Condition A33 (k) of the Sydney Metro West – Rail Infrastructure, Stations, Precincts and Operations SSI 22765520 Approval (25 January 2023)

The attached summary details the key activities undertaken by Environmental Representatives for Sydney Metro – Sydney Metro West for the month of October 2025.

Yours sincerely



Swathi Gowda
Environmental Representative

Cc:

DPHI: Major Projects Portal

Sydney Metro: John Ieroklis, Maria Doumit, Andrew Hendy, Cath Snelgrove, Ari Stypel, Ryan Butler, Syed Shah, Valerie Lebon, Sarah Lepre

Contractors: Anne Anderson (AFJV), Steph Mifsud (GLC), Sally Reynolds (JCG)

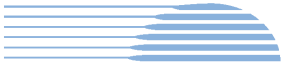


Table of Contents

1	Phase B - Central Tunnelling Package (Stage 1)	5
1.1	Key Construction Activities During the Period	5
1.2	Key Construction Activities Look Ahead	6
1.3	ER Inspections	6
1.3.1	Photos	6
1.4	Endorsed Documents	8
1.5	Complaints	8
1.6	Compliance	8
1.6.1	Incidents	8
1.6.2	Non-compliance and Potential Non Compliance	8
1.6.3	Audits	8
1.7	Looking Forward – Core Focus Areas	8
2	Phase F – Western Tunnelling Package (Stage 1)	9
2.1	Key Construction Activities During the Period	9
2.2	Construction Activities Look Ahead	10
2.3	ER Inspections	10
2.3.1	Photos	11
2.4	Endorsed Documents	13
2.5	Complaints	13
2.5.1	Incidents	13
2.5.2	Non-compliance	13
2.5.3	Audits	13
2.6	Looking Forward – Core Focus Area	14
3	Phase G – Eastern Tunnel Package (Stage 2)	15
3.1	Key Construction Related Activities During the Period	15
3.2	Key Construction Activities Look Ahead	16
3.3	ER Inspections	16
3.3.1	Photos	17
3.4	Endorsed document/s	18
3.5	Complaints	18
3.6	Compliance	19
3.6.1	Incidents	19
3.6.2	Non-compliance	19
3.6.3	Audits	19
3.7	Looking Forward – Core Focus Areas	19



4	Phase H2 – Five Dock Overhead to Underground Relocation Works (Stage 1)	20
4.1	Key Construction Activities During the Period	20
4.2	Key Construction Activities Look Ahead	20
4.3	ER Inspections	20
4.3.1	Photos	20
4.4	Endorsed Document/s	20
4.5	Complaints	20
4.6	Compliance	20
4.6.1	Incidents	21
4.6.2	Non-compliance	21
4.6.3	Audits	21
4.7	Looking Forward – Core Focus Area	21
5	Phase J – North Strathfield Power Enabling Works (Stage 1)	22
5.1	Key Construction Activities During the Period	22
5.2	Key Construction Activities Look Ahead	22
5.3	ER Inspections	22
5.3.1	Photos	22
5.4	Endorsed Document/s	22
5.5	Complaints	22
5.6	Compliance	22
5.6.1	Incidents	23
5.6.2	Non-compliance	23
5.6.3	Audits	23
5.7	Looking Forward – Core Focus Area	23
6	Phase L – Rosehill Power Enabling Works (Stage 3)	24
6.1	Key Construction Activities During the Period	24
6.2	Key Construction Activities Look Ahead	24
6.3	ER Inspections	24
6.3.1	Photos	24
6.4	Endorsed Document/s	24
6.5	Complaints	24
6.6	Compliance	25
6.6.1	Incidents	25
6.6.2	Non-compliance	25



6.6.3	Audits	25
6.7	Looking Forward – Core Focus Area	25
7	Sydney Metro Retained Obligations and Other Activity	26
7.1	Key Construction Activities During the Period	26
7.2	Key Construction Activities Look Ahead	26
7.3	ER Inspections	26
7.3.1	Photos	26
7.4	Endorsed Document/s	26
7.5	Complaints	26
7.6	Compliance	26
7.6.1	Incidents	26
7.6.2	Non-compliance	26
7.6.3	Audits	26
8	Statement of Limitations	27
9	Appendix A – ER Document Endorsement Records (ETP only)	28
10	Appendix B – ER Document Endorsement Records (Stage 3 only)	29



1 PHASE B - CENTRAL TUNNELLING PACKAGE (STAGE 1)

The Environmental Representatives for Phase B of Sydney Metro West are:

- Michael Woolley
- Maulik Bapodara
- Swathi Gowda
- Jo Robertson

Phase B – Central Tunnelling Package (CTP) is being delivered by Acciona Ferrovia Joint Venture (AFJV). Phase B of Sydney Metro West has been further broken into:

- Phase B1: Civil works
- Phase B2: Tunnelling works

The AFJV hold EPL 21610 for this Phase of works. Activities defined as Phase B2-Tunneling Works in the Staging Report for Metro West commenced during the November 2022 reporting period at Burwood North. Substantial Construction has been achieved under the CTP contract for the remaining sites. AFJV are now acting in a Transitional Handover Services capacity that comprises ongoing maintenance activities, minor rectification/defects works and specific works as required of Sydney Metro.

1.1 Key Construction Activities During the Period

The Bays

- Operation of the water treatment plant and management/maintenance of areas handed over including the tunnels.
- Some areas of the station box in use by ETP for spoil stockpiling and laydown.
- Dredging works completed as required by the EPA during the previous reporting period.

Five Dock

- East and West Shaft sites: Completion of the removal of some scaffolding in the western shaft. Runoff water in the shafts is automatically pumped to the Bays for treatment. No site presence at the surface.
- Use of house ongoing at 21 Waterview Street adjacent the eastern shaft by Sydney Metro personnel.

Burwood North

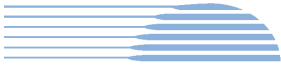
- Very limited works occurring. Minor deliveries and unloading of items to the surface.
- Water treatment plant not operating – general maintenance activities only.
- South Shaft: Removal of all sheds except for one toilet block.

North Strathfield

- No works at the site which was locked up and no personnel on site permanently.
- Pumping of water from the station box to the Bays for treatment and discharge.

Sydney Olympic Park

- Tunnel maintenance ongoing with minor repairs/defect rectification ongoing.



- Use of a workshop and laydown of materials at the surface for tunnellers. Ongoing consolidation of stored equipment.
- Remaining site sheds are being used to accommodate the workforce and remaining people from the Project Delivery Office which has been vacated.

AFJV continue to manage all sites (except much of the Bays which has been handed over to ETP Contractors).

1.2 Key Construction Activities Look Ahead

- Ongoing activities as described above.
- Some defect rectification works ongoing in the tunnels.
- Ongoing operation of the water treatment plant at the Bays with water discharges ongoing.
- Ongoing management/maintenance/caretaking of sites.
- Planned removal of walkway on the west of the shaft at Five Dock west.

1.3 ER Inspections

There were two ER inspections conducted during the reporting period on Thursday 9th and Thursday 23rd October. Currently inspections are held fortnightly, with each site being inspected monthly. No actions were raised during the inspections.

1.3.1 Photos



Figure 1.1 Station Box (The Bays) - Minor tunnel rectification activities ongoing.



Figure 1.2 Ongoing operation of the water treatment plant at the Bays (The Bays).



Figure 1.3 Eastern Shaft – Base of the eastern shaft. Automatic water management system operating (Five Dock).



Figure 1.4 Western Shaft – recent resurfacing of the Great Northern Road has been completed by others (not AFJV) (Five Dock).



Figure 1.5 Site locked up and no workforce at the surface (Burwood North).



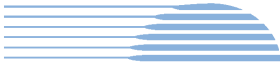
Figure 1.6 Automatic pumping systems were observed to be working (Burwood North).



Figure 1.7 No works observed in the station box at North Strathfield (NS).



Figure 1.8 Ongoing consolidation and removal of plant, equipment and materials at the surface (SOP).



1.4 Endorsed Documents

Nil

1.5 Complaints

Based on the monthly Sydney Metro Complaint Register issued for October 2025, there were four complaints reported of which two were considered not to relate to Sydney Metro activities. The two other complaints related to: alleged dirty/discoloured artworks in an adjacent building and a humming noise from a house over 500m from the site. With no or very limited site activities occurring other than fan ventilation the noise source may not have been from Metro activities.

1.6 Compliance

1.6.1 Incidents

No incidents as defined in the Infrastructure Approval were reported by AFJV during the reporting period.

1.6.2 Non-compliance and Potential Non Compliance

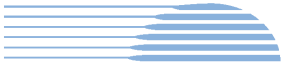
No non compliances were raised by AFJV or Sydney Metro during the reporting period and none were observed by the ER.

1.6.3 Audits

An Independent Environmental Audit for the Metro West project including CTP was conducted during August 2025. A Final Report for the IEA was issued during the reporting period.

1.7 Looking Forward – Core Focus Areas

- Ongoing management of sites during Transitional Handover Services.



2 PHASE F – WESTERN TUNNELLING PACKAGE (STAGE 1)

The Environmental Representatives for Phase F of Sydney Metro West are:

- Swathi Gowda
- George Kollias
- Michael Woolley
- Maulik Bapodara
- Jo Robertson

Phase F – Western Tunnelling Package (WTP) is being delivered by Gamuda Australia Laing O’Rourke Consortium (GLC).

GLC are constructing this Phase of Sydney metro West under EPL 21676.

2.1 Key Construction Activities During the Period

During the reporting period, the following activities were being undertaken at Westmead, Parramatta and the Clyde stabling and maintenance facility which includes the Rosehill, Clyde Dive and Clyde MSF construction sites:

Westmead

- Concrete defect repairs
- Cavern lining and other Form Reo Pour (FRP) works
- TBM 1 Operations (traverse and dismantle underway)
- TBM 2 breakthrough occurred at Westmead

Parramatta

- Station Box:
 - D-wall repairs ongoing
 - Material loadout
- Archaeology:
 - Zone 10 - Archaeological investigation and clearance works commenced

Rosehill

- TBM1 - stripping the tunnel has commenced after break through
- TBM 2 – breakthrough occurred at Westmead
- Cross passage excavation commenced at XP87 and XP86
- Water Treatment Plant operation including off-site discharge is ongoing
- Final TBM material being transferred internally
- Removal of conveyor infrastructure and tunnel support equipment

Clyde Dive

- Demobilisation of Lining Erecting Machine (LEM) and supporting equipment
- Caverns and Cross Passage of spur tunnels FRP ongoing
- Bulk earth works ongoing, including back fill of the shaft and removal of concrete hardstand
- Retaining wall works being finalised
- Clyde Dive portal FRP works commenced
- Relocation of site access



Clyde MSF

- Close out of defects across Unwin St and Fleet St
- Landscaping ongoing
- MSF Crib shed repositioning works ongoing
- Application of chip seal across finished areas complete

SOP

- Handed over on 15 April 2025

2.2 Construction Activities Look Ahead

The key construction activities planned are similar to those listed in Section 2.1, with the addition of the following:

- Various OOHW (conducted under EPL)
- Rosehill - Demolition of the Spoil shed scheduled to commence early November 2025
- Parramatta – Concrete deliveries at surface level (via drop pipe), to facilitate tunnel invert pours (commence late October 2025 –Standard /OOHW)

2.3 ER Inspections

Currently, the sites are divided into two groups and visited typically fortnightly (weather permitting) for ER inspections. The two groups are:

- Parramatta and Westmead
- Clyde Dive, Clyde MSF and Rosehill

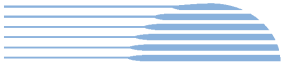
Five ER inspections were conducted during the reporting period (1, 08, 15, 22 and 29 October 2025); with opportunities for improvement (OFIs) identified and the following action(s) (summarised) raised during the month:

Clyde Dive, Parramatta, Westmead and Rosehill

- Nil

Clyde MSF

- Clyde MSF, Wentworth St – Maintenance action raised including damaged drain guard (adjacent to Area 1 site access), to be replaced/refreshed.



2.3.1 Photos



Figure 2.1- Parramatta Site: Station Box – hammering works underway.



Figure 2.2 - Parramatta Site: Mistlers in operation for dust suppression.

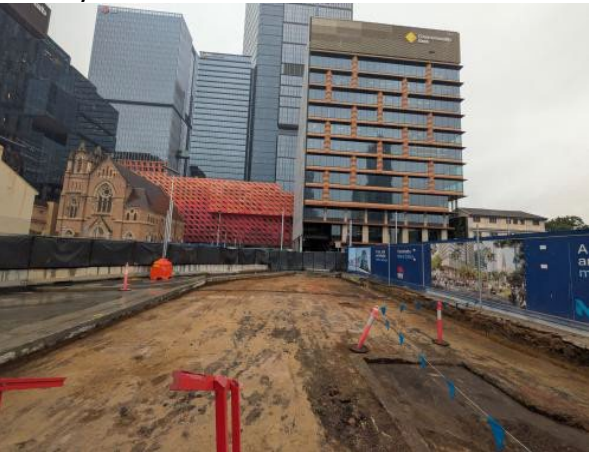


Figure 2.3 – Macquarie Ln, Parramatta Site: Section of Zone 10 - Archaeological investigation and clearance works commenced.

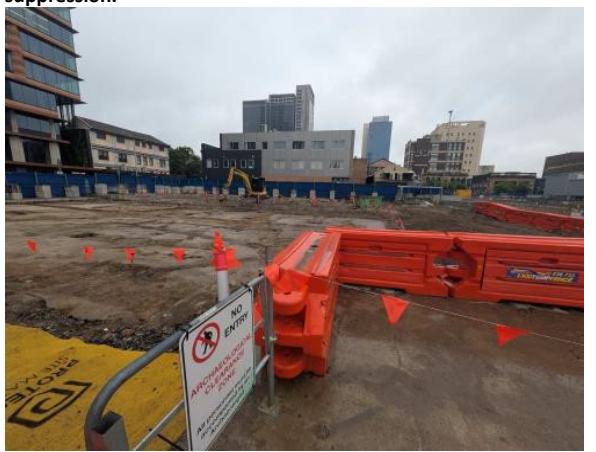


Figure 2.4 – Parramatta Site: Zone 10 - Archaeological investigation and clearance works commenced.

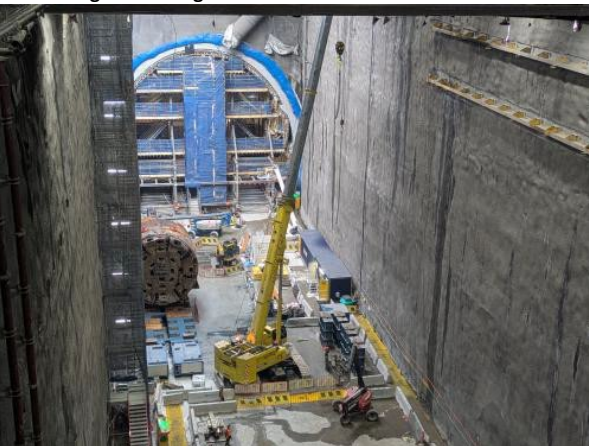


Figure 2.5 – Westmead Site: Station Cavern arch pours completed and TBM1 demobilisation works.



Figure 2.6 – Clyde Dive: Concrete hardstand removal and haul road fill placement.

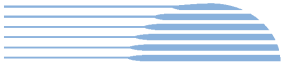


Figure 2.7 – Clyde Dive: Section of embankment spray sealed.



Figure 2.8 – Clyde Dive: Water cart mobilised.



Figure 2.9 – Clyde MSF: MSF Crib shed repositioning continuing.



Figure 2.10 – Clyde MSF: Fence installation works continuing.



Figure 2.11 – Clyde MSF: Spray seal application.



Figure 2.12 – Clyde MSF: Spray seal application.



Figure 2.13– Clyde MSF: Preparatory works on embankment for landscaping.



Figure 2.14 – Rosehill: Spoil storage and loading operations within shed.

2.4 Endorsed Documents

The following documents were approved or endorsed by the ER during the reporting period:

- Flora and Fauna Management Plan (Rev L)
- Spoil Management Plan (Rev J)
- Soil and Water Management Plan (Rev J)

2.5 Complaints

Based on the Sydney Metro Complaint Register for October 2025, there was one complaint reported during the month, compared to one complaint in September 2025 (deemed as not related to SM activities as per the Complaints Register). Complaint recorded in October 2025 is summarised below:

- Tunnelling - Property damage claim (Parramatta)

2.5.1 Incidents

No incidents considered to represent Incidents as defined under the Infrastructure Approval were reported to or observed by the ER during the reporting period.

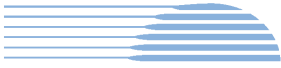
One Class 3 incidents (related to spill/leak) reported under GLC/SM reporting system during the reporting period.

2.5.2 Non-compliance

Nil non-compliances reported to the ER during the reporting period.

2.5.3 Audits

Independent Environmental Audit (IEA) for the Metro West Project including WTP was conducted in August 2025. Final IEA Report was submitted in the reporting period.



2.6 Looking Forward – Core Focus Area

The core focus areas for works (including upcoming works) are:

- Westmead - TBM retrieval works at Westmead (proposed OOHW in November 2025)
- Parramatta - Relining of sewer network (OOHW - dates TBC)
- Clyde Dive - Bulk earth works including back filling of the shaft, removal of hard stand areas continuing
- Clyde MSF - Progressive stabilisation / handover activities of portions of site
- Rosehill – Demobilisation activities such as grout plant, spoil and segment sheds (proposed November - Standard/OOHW)



3 PHASE G – EASTERN TUNNEL PACKAGE (STAGE 2)

The Sydney Metro West Eastern Tunnel Package is Stage 2 of the Sydney Metro West CSSI and is described as major civil construction works between The Bays and Sydney CBD, including station excavation at Pyrmont and Hunter Street and tunnel excavation between the Bays and Hunter Street. Stage 2 (SSI 19238057) was approved on the 24 August 2022.

The Environmental Representatives for the Sydney Metro West Eastern Tunnel Package are:

- Michael Woolley
- Maulik Bapodara
- Swathi Gowda
- Jo Robertson

The Eastern Tunnelling Package (ETP) is being delivered by John Holland CPB Ghella Joint Venture (JCG) with the contract being awarded in November 2022. Sydney Metro notified DPHI that the date of commencement of construction was 17 March 2023. JCG have received Environmental Protection Licence (EPL 21784) for the project.

3.1 Key Construction Related Activities During the Period

Works conducted during the reporting period included:

Hunter Street East:

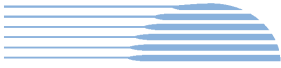
- Ongoing excavation and wall support of the southern portion of the site adjoining Hunter Street. Excavation with rock hammers occurring 7 days per week. Excavation activities to allow extension of the steel deck adjacent O'Connell Street.
- Wall support works along the site boundary with O'Connell Street including rock anchor drilling and installation and FRP works. Removal of the ramp adjacent 16 O'Connell Street and construction of a temporary ramp to the northern side of the site from the steel deck to allow further wall support activities.
- Ongoing concrete deliveries and FRP activities for pours in the caverns. Use of air ventilation systems and other tunnelling support activities for works in the caverns.
- Use of the steel deck with access driveways to O'Connell Street and Hunter Street for load out of spoil using kibble and unloading frame.
- Use of the crib sheds and offices over Richard Johnson Square. Painting of the underside of the structure white for better lighting at night.
- Operation of the water treatment plant under the steel deck and discharge of treated water to stormwater.

Hunter Street West:

- Bulk excavation of the shaft using multiple rock hammers, excavators and rock saws. Use of the steel deck for load out of spoil using kibble and truck loading frame.
- Wall support around the perimeter of the excavation with shotcrete and rock anchors.
- Strengthening activities at the Skinner's Hotel completed.
- Ongoing deliveries and pedestrian management along Hunter Street.
- Milligan's development continued on the site adjacent Hunter Street West with the demolition of the building on the corner of Pitt Street and Hunter Street near completed.

Pyrmont East:

- Re-launch of the TBMs with TBM Ruby having crossed under Darling Harbour.
- Completion of the use of the profiler and surface miner to excavate the invert for the caverns. One-week of 24/7 rock hammering operations occurred during the reporting period and numerous nights of rock hammer excavation occurred to 10pm.
- Ongoing removal of spoil to the Bays using trucks in the tunnels.
- Closure of Union Street and site establishment of concrete pumping facilities and noise mitigation in the ancillary facility within the closed street.
- Ongoing use of the tunnel ventilation system.



- Use of site amenities/sheds on the steel deck to the east of the acoustic shed

Pymont West:

- Completion of the use of the profiler and surface miner to excavate the invert for the caverns. Numerous nights of excavation to 10pm using rockhammers.
- Ongoing removal of spoil to the Bays via the tunnels.
- Water proofing completed for the service adits. Commencement of steel fixing for the invert.
- Drainage of water to the tunnelling operations.

The Bays:

- Both TBMs were tunnelling, hence the slurry plant was operating. Completion of cross passages XP8-XP12. Commencement of works on cross passage XP6 to the east of Pymont.
- Water treatment and discharge using the construction water treatment plant.
- Receipt and storage of spoil from Pymont sites through trucks in the tunnel and load out spoil. Extension of the storage of spoil area in the station box and load out to the segment shed for loading out to trucks.
- General support activities such as in the workshops, segment delivery and storage and use of site offices.
- Use of the truck marshalling area by trucks waiting to load up and/or attend other project sites.
- Use of a staff car parking area on the former CTP spoil shed area.

3.2 Key Construction Activities Look Ahead

The below works are planned to occur in the following reporting period:

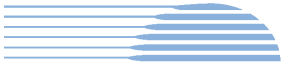
- Ongoing activities as described above.
- Ongoing tunnelling of the TBMs towards Hunter Street sites.
- Excavation of the shafts at the Hunter Street sites 7 days per week.
- Ongoing construction of cross passages in the tunnel between Pymont and Hunter Street West.
- Planning for retrieval of the TBMs at Hunter Street such as setting up a diesel Tower Crane at Hunter Street East.

3.3 ER Inspections

Three ER inspections were conducted during the reporting period on each Tuesday in October except for 7 October due to a post long weekend rostered day off. The following action was raised during the inspections:

- JCG to ensure wash water from the West exit is not directed to drains in Hunter Street. ERSED controls in Hunter Street to be maintained and augmented, such as re-installation of the pump and drain controls installed.

JCG were responsive to ER feedback during inspections and for the close out of the action raised.



3.3.1 Photos



Figure 3.1 Hunter Street East: View from cavern into base of shaft excavation.



Figure 3.2 Hunter Street East: Ongoing excavation adjacent Hunter Street and load out of spoil from the steel deck.



Figure 3.3 Hunter St East: Concrete works in turn back caverns.



Figure 3.4 Hunter Street West: Ongoing bulk excavation of the shaft.



Figure 3.5 Pyrmont East: Near completion of the excavation of the station cavern.



Figure 3.6 Pyrmont West: TBM tunnels from cross over cavern.



Figure 3.7 Pyrmont West: Service adit water proofing completed.



Figure 3.8 Pyrmont West: View from base of the shaft.



Figure 3.9 The Bays: A spoil stockpile area has been set up in the CTP side of the station box to manage spoil from the Pyrmont site.

3.4 Endorsed document/s

The following documents were signed, approved or endorsed during the reporting period.

- Construction Environmental Management Plan Rev 9 dated 13/10/2025
- Construction Environmental Management Plan Rev 11 dated 21/10/2025
- Minor Ancillary Facility – Hunter Street Amenities, signed 31/10/2025

The updates to the CEMP mostly comprised changes to the site layout plans to include approved and assessed ancillary facilities.

A Minor Ancillary Facility memo for worker amenities at Hunter Street was updated to reflect a revised end of use date only.

3.5 Complaints

In October 2025, Sydney Metro's monthly complaint register recorded nineteen complaints which is an increase from twelve complaints reported in September. Two of the complaints were determined not to be related to Sydney Metro activities after investigations were conducted.



Six of the complaints related to the Hunter Street sites. Four of these related to noise during standard hours with 2 complaints reported at each of the Hunter East and Hunter West sites. One complaint related to noise from out of hours works (OOHWs). One complaint related to dust. The increase in the number of complaints correlates with the increase in hammering activities in the Hunter West shaft where bulk excavation was well underway; and ongoing hammering at Hunter Street East, including in the area of the former acoustic shed which is a much shallower level compared to the depth of the shaft excavation adjacent Hunter Street.

Eleven complaints related to noise at the Pyrmont sites, with most of these including complaints related to OOHWs. A selection of complaints also covered respite and alternative accommodation. The OOH complaints correlated with hammering in the caverns conducted during daytime and OOHs. Hammering for bulk excavation in the caverns ceased in late October.

One complaint related to spoil being dropped on the road from a haulage truck and another related to property damage at the Bays. Both of these complaints were considered not related to Sydney Metro.

3.6 Compliance

3.6.1 Incidents

No incidents considered to represent an Incident as defined under the Project Approval were reported to the ER during the reporting period.

3.6.2 Non-compliance

Two Non-Compliance reports (NCRs) were issued by JCG during the period. These comprised:

- JCG have a system to manage heavy vehicles on the Project, however the system failed to ensure spoil haulage vehicles adhered to the nominated haulage routes identified in the CTMPs on 73 occasions out of 32,140 trips during the audit period which is a requirement of Condition D77.
- JCG received correspondence from three stakeholders regarding an offer of alternative accommodation for night works occurring at Pyrmont in October 2025. The three stakeholders expressed dissatisfaction about the offer. The correspondence was initially recorded as an 'event' in the Consultation Manager Database (CMD). Following a review on 17/10/2025 of the entries these three 'events' were reclassified as 'complaints'. JCG did not comply with the requirement to report the complaints within the timeframe required of the CCS under Condition D52.

3.6.3 Audits

An Independent Environmental Audit was conducted for the Metro West project in August which included ETP activities. The Final IEA Report was provided during the reporting period.

3.7 Looking Forward – Core Focus Areas

In the next reporting period, the ER will be focused on:

- General monitoring of construction activities
- Noise associated with excavation of the Hunter Street shafts
- Review of planned OOHWs at Pyrmont
- Interactions of activities with neighbouring developments at Hunter Street



4 PHASE H2 – FIVE DOCK OVERHEAD TO UNDERGROUND RELOCATION WORKS (STAGE 1)

With the ER endorsement and submission to the Planning Secretary of the Sydney Metro West Stage 1 Phasing Report Rev 2.0, the **Phase H2 Five Dock Overhead to Underground Relocation Works** commenced as a package of works. This package will be delivered by Quickway Constructions with the contract being awarded in July 2025. Sydney Metro will notify DPHI of the date of commencement of construction, proposed for November 2025.

Phase H2 will involve the removal of two wooden power poles and the relocation of one wooden power pole. Electrical works on the Ausgrid network including underground relocation of five bays of overhead wiring outside of the Five Dock eastern construction site, along Second Avenue and Waterview Street, Five Dock. The scope of works will also involve installation of three pillars and four street light poles with service connections to nine private properties at Waterview Street and Second Avenue. The trenching works to install underground electrical services will occur within the roadway and footpaths of Waterview Street and Second Avenue. The excavation depth would be between 500mm to 1000mm below ground level and trenches would vary in width up to 950mm.

The ancillary facility at Silverwater used for Phase H1 will also be utilised for Phase H2 as a laydown area. A minor ancillary facility will be established at the Five Dock worksite for minor storage.

The Environmental Representatives for the Sydney Metro Stage 1 Phase H2 Package are:

- George Kollias
- Jo Robertson

4.1 Key Construction Activities During the Period

Low Impact Works (Investigative Works) were completed at the end of September 2025.

4.2 Key Construction Activities Look Ahead

Project Plans including CEMP, NVMP and associated documents were developed and endorsed/approved. Construction commencement is scheduled for 24th November 2025.

4.3 ER Inspections

Nil ER Inspections during the reporting period. ER Inspection will commence with the commencement of construction.

4.3.1 Photos

Not applicable as there were no inspections.

4.4 Endorsed Document/s

- A21 Minor Ancillary Facility Application, Second Avenue, Five Dock, Rev2 – ER endorsement 30/10/25

4.5 Complaints

Nil.

4.6 Compliance

Nil.



HBI Healthy Buildings International Pty Ltd

4.6.1 Incidents

Nil.

4.6.2 Non-compliance

Nil.

4.6.3 Audits

Nil.

4.7 Looking Forward – Core Focus Area

Establishment of the Minor Ancillary Facility on Second Avenue and the commencement of construction scheduled from 24th November 2025.



5 PHASE J – NORTH STRATHFIELD POWER ENABLING WORKS (STAGE 1)

With the ER endorsement and submission to the Planning Secretary of the Sydney Metro West Stage 1 Phasing Report Rev 1.8, the **Phase J North Strathfield Power Enabling Works** commenced as a package of works. This package will be delivered by Syscon with the contract being awarded in August 2025. Sydney Metro will notify DPHI of the date of commencement of construction, proposed for early December 2025.

Phase J will involve a small portion of electrical works that has been transferred from the Central Tunnelling Package (Phase B) to Phase J relating to the establishment of an electrical kiosk at North Strathfield to provide high voltage power to the site for follow-on contractors. The Principal Contractor undertaking Phase J will be responsible for completing the design for this scope and conducting the remaining works.

The majority of the work to establish a high voltage power connection has been completed by the Phase B Principal Contractor and only requires modifications to the end connection points at the kiosk and the live mains. The North Strathfield Power Enabling Works includes the following physical activities: investigations to establish locations of existing utilities; retrenching for low voltage (LV) works; and installation of electrical kiosk including internal reticulation and outage preparation works.

The Environmental Representatives for the Sydney Metro Stage 1 Phase J Package are:

- George Kollias
- Jo Robertson

5.1 Key Construction Activities During the Period

Low Impact Works have been undertaken through October 2025, to undertake survey works both on and off-site, pre-construction dilapidation photos/video and investigative testing of the electrical kiosk that is already on the site to ensure that it is functioning as required.

5.2 Key Construction Activities Look Ahead

Project Plans including CEMP, NVMP, CTMP and associated documents were under review through October 2025. Construction commencement is scheduled for 5th December 2025 pending approvals.

5.3 ER Inspections

Nil ER Inspections during the reporting period.

5.3.1 Photos

Not applicable as there were no inspections.

5.4 Endorsed Document/s

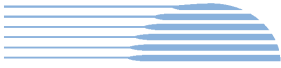
Nil documents endorsed this period.

5.5 Complaints

Nil.

5.6 Compliance

Nil.



HBI Healthy Buildings International Pty Ltd

5.6.1 Incidents

Nil.

5.6.2 Non-compliance

Nil.

5.6.3 Audits

Nil.

5.7 Looking Forward – Core Focus Area

Establishment of the site and the commencement of construction from 5th December 2025 pending approvals.



6 PHASE L – ROSEHILL POWER ENABLING WORKS (STAGE 3)

The Sydney Metro West Stage 3 of the planning approval process (including tunnel fit-out, station building and fit-out, operation and maintenance) for Sydney Metro West, application number SSI-22765520, was approved on 25 January 2023.

Sydney Metro submitted the Sydney Metro West Stage 3 - Phasing Report (Rev 1.0) to the Planning Secretary in August 2025. The **Rosehill Power Enabling Works (Phase L)** works deemed early works, under the Stage 3 approval are required to ensure follow on contractors' access to site and risk removal associated with delays. **Phase L** is being delivered by Quickway Construction Pty Ltd with the contract being awarded in August 2025.

The Environmental Representatives for the Sydney Metro Stage 3 Package are:

- Swathi Gowda
- Jo Robertson
- Michael Woolley
- Maulik Bapodara

6.1 Key Construction Activities During the Period

Low Impact works for Clyde / Rosehill pothole / slit trenching early works investigations; with works scheduled to be completed in November 2025 (with contingency), at this stage.

6.2 Key Construction Activities Look Ahead

Main construction activities are targeted to commence at the end of January 2026, at this stage.

6.3 ER Inspections

As no main construction works have occurred, no ER Inspections during the reporting period.

6.3.1 Photos

Not applicable as there were no inspections.

6.4 Endorsed Document/s

The ER has received the following draft documents for review and comment.

- Sydney Metro West – Rosehill HV Conduit Installations - Construction Environmental Management Plan (CEMP) 4567-ENV-PLN-01, Revision 02, dated 20 October 2025
- CEMP - Appendix H - Noise and Vibration Management Procedure (Revision 2.0, dated 27 October 2025) – reviewed by ER and AA (endorsed by AA on 31 October 2025)
- MCoA A24_Memo_Temporary Storage Areas (Revision 1.0, dated 20 October 2025)

6.5 Complaints

Nil.



HBI Healthy Buildings International Pty Ltd

6.6 Compliance

6.6.1 Incidents

Nil.

6.6.2 Non-compliance

Nil.

6.6.3 Audits

Nil.

6.7 Looking Forward – Core Focus Area

- Ongoing low impact works
- Ongoing review, comment and then endorsement as relevant of the CEMP, and other documents as required by the approved Phasing Report to enable Construction.



7 SYDNEY METRO RETAINED OBLIGATIONS AND OTHER ACTIVITY

The Environmental Representatives for the Sydney Metro Retained Obligations and other Activities are:

- Swathi Gowda
- Jo Robertson

The Sydney Metro Retained Obligations and other Activities, refers to any activities where responsibility for completion has been retained by Sydney Metro outside of the main work packages. These works typically do not require an EPL and are often low risk, exempt or administrative in nature.

7.1 Key Construction Activities During the Period

The ER is not aware of other Sydney Metro managed construction activities during the period.

7.2 Key Construction Activities Look Ahead

The ER is not aware of other Sydney Metro managed upcoming construction activities.

7.3 ER Inspections

As there were no construction works, there were no ER Inspections during the reporting period.

7.3.1 Photos

Not applicable as there were no inspections.

7.4 Endorsed Document/s

Nil.

7.5 Complaints

No complaints have been reported to the ER during the reporting period.

7.6 Compliance

7.6.1 Incidents

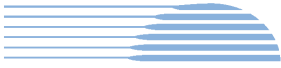
No incidents have been reported to the ER during the reporting period.

7.6.2 Non-compliance

No non compliances have been reported to the ER during the reporting period.

7.6.3 Audits

Independent Audits are reported (where relevant) in other sections of this Monthly Report.



8 STATEMENT OF LIMITATIONS

Healthy Buildings International (HBI) has prepared this report in accordance with the requirements of:

- Condition A30(k) of the Sydney Metro West, Concept and Stage 1 SSI 10038 Approval (11 March 2021),
- Condition A32(k) of the Sydney Metro West – The Bays to Sydney CBD SSI 19238057 Approval (24 August 2022), and
- Condition A33 (k) of the Sydney Metro West – Rail Infrastructure, Stations, Precincts and Operations SSI 22765520 Approval (25 January 2023)

The report is for the sole purposes of Department of Planning, Housing and Infrastructure (DPHI) and Sydney Metro. It has been prepared based on generally accepted practices and standards at the time it was prepared. No other warranty, expressed or implied, is made as to the professional advice included in this Report. This report did not assess any aspects relating to safety.

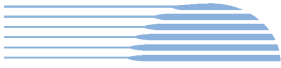
Where the Report indicates that information has been provided to HBI by third parties, HBI assumes no liability for any inaccuracies in or omissions to that information.

This Report was prepared based on the conditions encountered and information reviewed at this time. HBI disclaims responsibility for any changes that may have occurred after this time.

This Report should be read in full. No responsibility is accepted for use of any part of this report in any other context or for any other purpose or by third parties. This Report does not purport to give legal advice. Legal advice can only be given by qualified legal practitioners.

Except as required by law, no third party may use or rely on this Report unless otherwise agreed by HBI in writing. Except as specifically stated in this section, HBI does not authorise the use or findings of this Report by any third party.

To the extent permitted by law, HBI expressly disclaims and excludes liability for any loss, damage, cost or expenses suffered by any third party relating to or resulting from the use of, or reliance on, any information contained in this Report. HBI does not admit that any action, liability or claim may exist or be available to any third party.



9 APPENDIX A – ER DOCUMENT ENDORSEMENT RECORDS (ETP ONLY)

- Construction Environmental Management Plan Rev 9
- Construction Environmental Management Plan Rev 11



HBI Healthy Buildings International Pty Ltd

10 APPENDIX B – ER DOCUMENT ENDORSEMENT RECORDS (STAGE 3 ONLY)

Nil