

Mr Rob Sherry
Team Leader Compliance – Government Projects
Department of Planning, Housing and Infrastructure
Locked Bag 5022
PARRAMATTA NSW 2124

5 December 2025
Ref:201208-ER_DPHI-November 2025

Dear Rob

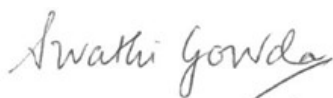
RE: Sydney Metro - Sydney Metro West SSI - ER Monthly Report for November 2025

Healthy Buildings International (HBI) submits this report to the Secretary in accordance with:

- Condition A30 (k) of the Sydney Metro West, Concept and Stage 1 SSI 10038 Approval (11 March 2021), and associated modifications (MOD 1 - 28 July 2021, MOD 2 - 3 June 2022, MOD3 – 4 July 2022, MOD 4 - 23 December 2022, MOD 5 – 20 September 2023 and MOD 6 – 6 November 2024); and
- Condition A32(k) of the Sydney Metro West – The Bays to Sydney CBD SSI 19238057 Approval (24 August 2022) and associated modifications (MOD 1 – April 2023, MOD 2 – October 2023, and MOD 3 – November 2024)
- Condition A33 (k) of the Sydney Metro West – Rail Infrastructure, Stations, Precincts and Operations SSI 22765520 Approval (25 January 2023)

The attached summary details the key activities undertaken by Environmental Representatives for Sydney Metro – Sydney Metro West for the month of November 2025.

Yours sincerely



Swathi Gowda
Environmental Representative

Cc:

DPHI: Major Projects Portal

Sydney Metro: John Ieroklis, Maria Doumit, Andrew Hendy, Cath Snelgrove, Ari Stypel, Ryan Butler, Syed Shah, Valerie Lebon, Sarah Lepre

Contractors: Anne Anderson (AFJV), Steph Mifsud (GLC), Sally Reynolds (JCG)

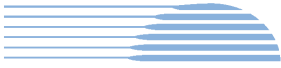


Table of Contents

1	PHASE B - CENTRAL TUNNELLING PACKAGE (STAGE 1)	4
1.1	KEY CONSTRUCTION ACTIVITIES DURING THE PERIOD	4
1.2	KEY CONSTRUCTION ACTIVITIES LOOK AHEAD	5
1.3	ER INSPECTIONS	5
1.3.1	<i>Photos</i>	5
1.4	ENDORSED DOCUMENTS	7
1.5	COMPLAINTS	7
1.6	COMPLIANCE	7
1.6.1	<i>Incidents</i>	7
1.6.2	<i>Non-compliance and Potential Non Compliance</i>	7
1.6.3	<i>Audits</i>	7
1.7	LOOKING FORWARD – CORE FOCUS AREAS	7
2	PHASE F – WESTERN TUNNELLING PACKAGE (STAGE 1)	8
2.1	KEY CONSTRUCTION ACTIVITIES DURING THE PERIOD	8
2.2	CONSTRUCTION ACTIVITIES LOOK AHEAD	9
2.3	ER INSPECTIONS	9
2.3.1	<i>Photos</i>	10
2.4	ENDORSED DOCUMENTS	12
2.5	COMPLAINTS	12
2.5.1	<i>Incidents</i>	12
2.5.2	<i>Non-compliance</i>	12
2.5.3	<i>Audits</i>	12
2.6	LOOKING FORWARD – CORE FOCUS AREA	13
3	PHASE G – EASTERN TUNNEL PACKAGE (STAGE 2)	14
3.1	KEY CONSTRUCTION RELATED ACTIVITIES DURING THE PERIOD	14
3.2	KEY CONSTRUCTION ACTIVITIES LOOK AHEAD	15
3.3	ER INSPECTIONS	15
3.3.1	<i>Photos</i>	16
3.4	ENDORSED DOCUMENT/S	17
3.5	COMPLAINTS	17
3.6	COMPLIANCE	18
3.6.1	<i>Incidents</i>	18
3.6.2	<i>Non-compliance</i>	18
3.6.3	<i>Audits</i>	18
3.7	LOOKING FORWARD – CORE FOCUS AREAS	18
4	PHASE H2 – FIVE DOCK OVERHEAD TO UNDERGROUND RELOCATION WORKS (STAGE 1)	19
4.1	KEY CONSTRUCTION ACTIVITIES DURING THE PERIOD	19
4.2	KEY CONSTRUCTION ACTIVITIES LOOK AHEAD	19
4.3	ER INSPECTIONS	19
4.3.1	<i>Photos</i>	19
4.4	ENDORSED DOCUMENT/S	20
4.5	COMPLAINTS	20
4.6	COMPLIANCE	20
4.6.1	<i>Incidents</i>	20
4.6.2	<i>Non-compliance</i>	20
4.6.3	<i>Audits</i>	20
4.7	LOOKING FORWARD – CORE FOCUS AREA	20
5	PHASE J – NORTH STRATHFIELD POWER ENABLING WORKS (STAGE 1)	21
5.1	KEY CONSTRUCTION ACTIVITIES DURING THE PERIOD	21



5.2	KEY CONSTRUCTION ACTIVITIES LOOK AHEAD	21
5.3	ER INSPECTIONS	21
5.3.1	<i>Photos</i>	21
5.4	ENDORSED DOCUMENT/S.....	21
5.5	COMPLAINTS.....	22
5.6	COMPLIANCE	22
5.6.1	<i>Incidents</i>	22
5.6.2	<i>Non-compliance</i>	22
5.6.3	<i>Audits</i>	22
5.7	LOOKING FORWARD – CORE FOCUS AREA	22
6	PHASE L – ROSEHILL POWER ENABLING WORKS (STAGE 3)	23
6.1	KEY CONSTRUCTION ACTIVITIES DURING THE PERIOD.....	23
6.2	KEY CONSTRUCTION ACTIVITIES LOOK AHEAD	23
6.3	ER INSPECTIONS	23
6.3.1	<i>Photos</i>	23
6.4	ENDORSED DOCUMENT/S.....	23
6.5	COMPLAINTS.....	23
6.6	COMPLIANCE	23
6.6.1	<i>Incidents</i>	23
6.6.2	<i>Non-compliance</i>	24
6.6.3	<i>Audits</i>	24
6.7	LOOKING FORWARD – CORE FOCUS AREA	24
7	SYDNEY METRO RETAINED OBLIGATIONS AND OTHER ACTIVITY	25
7.1	KEY CONSTRUCTION ACTIVITIES DURING THE PERIOD.....	25
7.2	KEY CONSTRUCTION ACTIVITIES LOOK AHEAD	25
7.3	ER INSPECTIONS	25
7.3.1	<i>Photos</i>	25
7.4	ENDORSED DOCUMENT/S.....	25
7.5	COMPLAINTS.....	25
7.6	COMPLIANCE	25
7.6.1	<i>Incidents</i>	25
7.6.2	<i>Non-compliance</i>	25
7.6.3	<i>Audits</i>	25
8	STATEMENT OF LIMITATIONS	26
9	APPENDIX A – ER DOCUMENT ENDORSEMENT RECORDS (ETP ONLY)	27
10	APPENDIX B – ER DOCUMENT ENDORSEMENT RECORDS (STAGE 3 ONLY)	28



1 PHASE B - CENTRAL TUNNELLING PACKAGE (STAGE 1)

The Environmental Representatives for Phase B of Sydney Metro West are:

- Michael Woolley
- Maulik Bapodara
- Swathi Gowda
- Jo Robertson

Phase B – Central Tunnelling Package (CTP) is being delivered by Acciona Ferrovia Joint Venture (AFJV). Phase B of Sydney Metro West has been further broken into:

- Phase B1: Civil works
- Phase B2: Tunnelling works

The AFJV hold EPL 21610 for this Phase of works. Activities defined as Phase B2-Tunneling Works in the Staging Report for Metro West commenced during the November 2022 reporting period at Burwood North. Substantial Construction has been achieved under the CTP contract for the remaining sites. AFJV are now acting in a Transitional Handover Services capacity that comprises ongoing maintenance activities, minor rectification/defects works and specific works as required of Sydney Metro.

1.1 Key Construction Activities During the Period

The Bays

- Operation of the water treatment plant and management/maintenance of areas handed over including the tunnels.
- Some areas of the station box were in use by ETP for laydown.

Five Dock

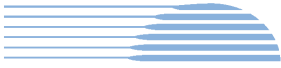
- East and West Shaft sites: No site presence at the surface during inspections. Runoff water in the shafts is automatically pumped to the Bays for treatment.
- Use of house ongoing at 21 Waterview Street adjacent the eastern shaft by Sydney Metro personnel.

Burwood North

- Very limited works occurring. Minor deliveries and unloading of items to the surface.
- Water treatment plant not operating – general maintenance activities only.
- Removal of vacuum truck after drains and pipes were cleaned of silt throughout the tunnels, shafts and station boxes. Disposal of silt collected.
- South Shaft: Removal of all sheds completed.

North Strathfield

- No works at the site which was locked up and no personnel on site permanently.
- Pumping of water from the station box to the Bays for treatment and discharge.



Sydney Olympic Park

- Tunnel maintenance ongoing with minor repairs/defect rectification ongoing.
- Use of a workshop and laydown of materials at the surface for tunnellers. Ongoing consolidation of stored equipment.
- Remaining site sheds are being used to accommodate the workforce and remaining people from the Project Delivery Office which has been vacated.

AFJV continue to manage all sites (except much of the Bays which has been handed over to ETP Contractors).

1.2 Key Construction Activities Look Ahead

- Ongoing activities as described above.
- Some defect rectification works ongoing in the tunnels.
- OOHWs to repair a small section of banner mesh at North Strathfield.
- Ongoing operation of the water treatment plant at the Bays with water discharges ongoing.
- Ongoing maintenance of the water treatment plant at Burwood North.
- Ongoing management/maintenance/caretaking of sites.

1.3 ER Inspections

There were two ER inspections conducted during the reporting period on 13th and 19th November 2025, with each site being inspected once in the month. No actions were raised during the inspections.

1.3.1 Photos



Figure 1.1 Station Box (The Bays) - Ongoing maintenance activities.



Figure 1.2 Ongoing operation of the water treatment plant at the Bays (The Bays).

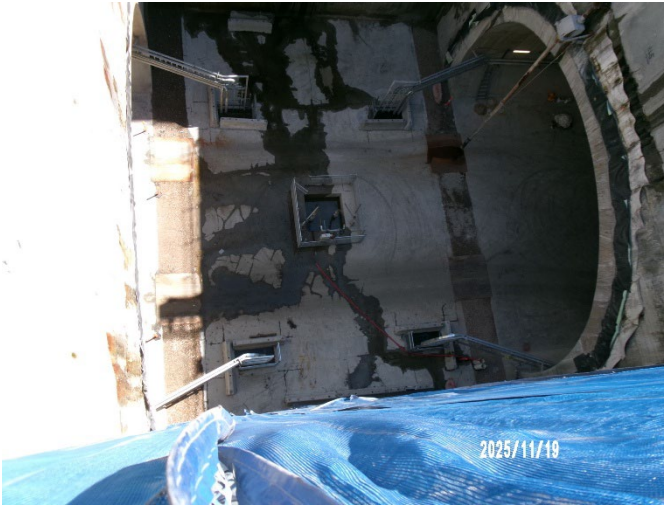
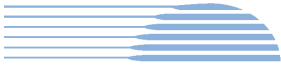


Figure 1.3 Eastern Shaft – No activities sighted. Automatic water management system operating at the base of the East Shaft (Five Dock).



Figure 1.4 Western Shaft – no apparent works at the surface (Five Dock).

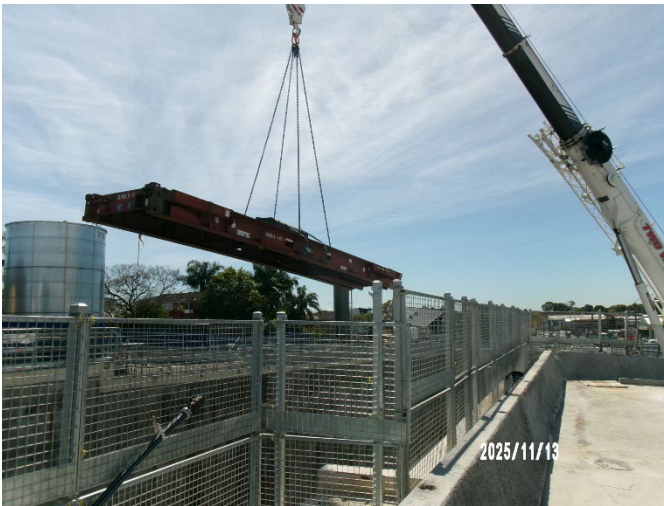


Figure 1.5 Frame for removal of vacuum truck (Burwood North).

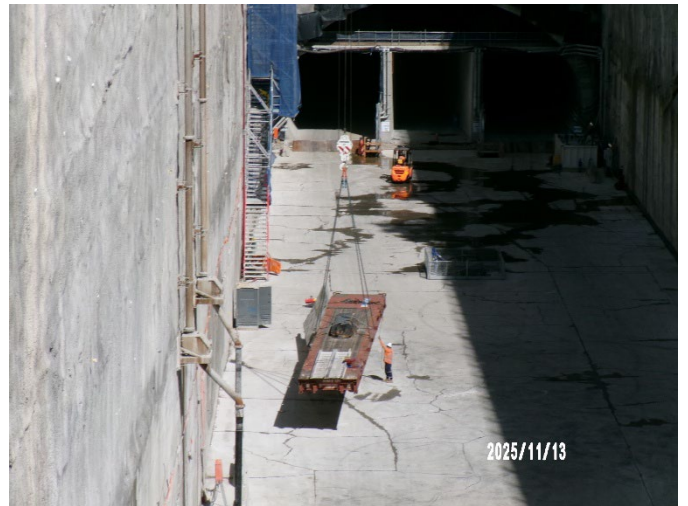


Figure 1.6 Frame for removal of vacuum truck in base of station box (Burwood North).



Figure 1.7 No works observed in the station box at North Strathfield (NS).



Figure 1.8 Nozzles and base of station box (SOP).



HBI Healthy Buildings International Pty Ltd

1.4 Endorsed Documents

Nil

1.5 Complaints

Based on the monthly Sydney Metro Complaint Register issued for November 2025, there were no complaints reported that related to CTP activities.

1.6 Compliance

1.6.1 Incidents

No incidents as defined in the Infrastructure Approval were reported by AFJV during the reporting period.

1.6.2 Non-compliance and Potential Non Compliance

No non compliances were raised by AFJV or Sydney Metro during the reporting period and none were observed by the ER.

1.6.3 Audits

An Independent Environmental Audit for the Metro West project including CTP was conducted during August 2025. A Final Report for the IEA was issued during the previous reporting period.

1.7 Looking Forward – Core Focus Areas

- Ongoing management of sites during Transitional Handover Services.



2 PHASE F – WESTERN TUNNELLING PACKAGE (STAGE 1)

The Environmental Representatives for Phase F of Sydney Metro West are:

- Swathi Gowda
- George Kollias
- Michael Woolley
- Maulik Bapodara
- Jo Robertson

Phase F – Western Tunnelling Package (WTP) is being delivered by Gamuda Australia Laing O’Rourke Consortium (GLC).

GLC are constructing this Phase of Sydney metro West under EPL 21676.

2.1 Key Construction Activities During the Period

During the reporting period, the following activities were being undertaken at Westmead, Parramatta and the Clyde stabling and maintenance facility which includes the Rosehill, Clyde Dive and Clyde MSF construction sites:

Westmead

- Concrete defect repairs
- Cavern lining and other Form Reo Pour (FRP) works ongoing
- TBM 1 and TBM 2 operations - traverse and dismantle ongoing

Parramatta

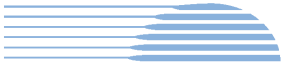
- Station Box:
 - D-wall repairs ongoing
 - Station Box material loadout
- Archaeology:
 - Zone 10 - Archaeological investigation and clearance works ongoing
- Sewer relining works commenced

Rosehill

- Continuing to strip the tunnels and remove redundant items from tunnels
- Cross passage currently excavating at XP86 and XP89
- Water Treatment Plant operation including off-site discharge is ongoing
- Removal of conveyor infrastructure and tunnel support equipment ongoing
- Demolition of the Spoil shed complete
- Capping works complete and preparation for handover of Portion 2 ongoing

Clyde Dive

- Demobilisation of Lining Erecting Machine (LEM) and supporting equipment ongoing
- Caverns FRP ongoing
- Bulk earth works ongoing, back fill of the shaft completed and removal of concrete hardstand
- Clyde Dive portal FRP works ongoing
- Demobilisation of old site sheds



Clyde MSF

- Portions 12a and 9a achieved substantial completion on 7 November 2025 and handed over
- Ongoing maintenance of landscaping areas
- Portion 12B- backfilling of previous crib and site office area ongoing
- Realignment of discharge line being installed on access track, above ground

SOP

- Handed over on 15 April 2025

2.2 Construction Activities Look Ahead

The key construction activities planned are similar to those listed in Section 2.1, with the addition of the following:

- Various OOHW (conducted under EPL)
- Rosehill - Flood basin Stage 2 works to commence – scheduled from early December 2025

2.3 ER Inspections

Currently, the sites are divided into two groups and visited typically fortnightly (weather permitting) for ER inspections. The two groups are:

- Parramatta and Westmead
- Clyde Dive, Clyde MSF and Rosehill

Four ER inspections were conducted during the reporting period - 05, 12, 19 and 26 November 2025, including DPHI attendance on 12 and 19 November 2025 ER Inspections; with opportunities for improvement (OFIs) identified and the following action(s) (summarised) raised during the month as follows:

Parramatta, Westmead and Rosehill

- Nil

Clyde Dive

- Clyde Dive (Western side) – Action raised for bund to be established, swale tidied up and controls replaced / refreshed (as required).
- Clyde Dive - Action raised for chemicals to be placed with secondary containment.
- Clyde Dive: Observed excavator arm/bucket within the TPZ / no – go zone (not operational at the time and addressed promptly by GLC by end of ER Inspection). Action raised to reiterate environmental no-go zones / any permit requirements via a toolbox.

Clyde MSF

- Clyde MSF - Action raised to remove dome debris from creek crossing ramp and reinstate some scour rock (where displaced by creek flow).
- Clyde MSF (Flood Basin) - Action raised to review/address sediment source while landscaping is establishing and install further controls, where required.



2.3.1 Photos



Figure 2.1- Parramatta Station Box: Hammering within box, with misters for dust suppression operational within the box.



Figure 2.2 - Parramatta Station Box: Misters in operation (surface level) for dust suppression.



Figure 2.3 – Parramatta: Stockpiling and loadout of spoil.



Figure 2.4 – Parramatta Eastern Station Box: Concrete boom pump set-up at surface level, for tunnel invert concrete pours.



Figure 2.5 – Parramatta: Archaeological investigation and clearance works - Zone 10 (Macquarie Lane section).

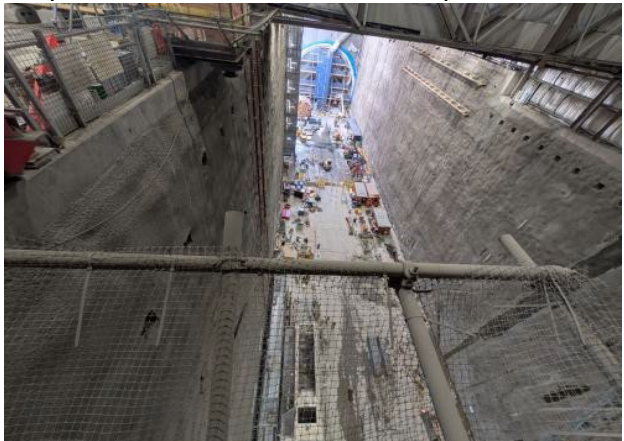


Figure 2.6 – Westmead: TBM traverse / dismantling works.

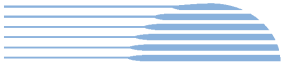


Figure 2.7 – Clyde MSF (West) - Hydro mulch application completed and some planting in Area 1.



Figure 2.8 – Clyde MSF (West) - Hydro mulch application near retaining wall.



Figure 2.9 – Clyde MSF (West): Backfilling of previous site shed area.



Figure 2.10 – Rosehill: Demolition of spoil shed completed.



Figure 2.11 – Rosehill: Finishing works to handover Portion 2 Section continuing.



Figure 2.12 – Clyde Dive: Backfilling of shaft nearing completion.

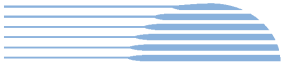


Figure 2.13– Clyde Dive: Chip seal applied on haul road (eastern boundary).



Figure 2.14 – Clyde Dive: Breaking of concrete with dust suppression observed.

2.4 Endorsed Documents

The following documents were approved or endorsed by the ER during the reporting period:

- Nil

2.5 Complaints

Based on the Sydney Metro Complaint Register for November 2025, there were two complaints reported during the month, compared to one complaint in October 2025. Complaints recorded in November 2025 are summarised below:

Westmead

- One complaint related to noise (Standard hours and OOHV)
- One complaint related to noise and vibration (Standard hours) and property damage

2.5.1 Incidents

No incidents considered to represent Incidents as defined under the Infrastructure Approval were reported to or observed by the ER during the reporting period.

Two Class 3 incidents (one related to minor spill and other related to overturned HV during transportation of spoil - RRO material) reported under GLC/SM reporting system during the reporting period.

2.5.2 Non-compliance

Nil non-compliances reported to the ER during the reporting period.

2.5.3 Audits

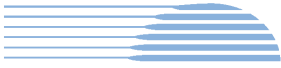
Nil during the reporting period.



2.6 Looking Forward – Core Focus Area

The core focus areas for works (including upcoming works) are:

- Westmead - TBM retrieval works at Westmead (proposed OOHW in December 2025)
- Clyde Dive - Bulk earth works, removal of concrete hardstand areas continuing
- Rosehill – Progressive stabilisation, demobilisation and handover activities of portion of site
- Christmas site shutdown period – shutdown planning activities and site stabilisation (dates and plan being finalised -TBC)



3 PHASE G – EASTERN TUNNEL PACKAGE (STAGE 2)

The Sydney Metro West Eastern Tunnel Package is Stage 2 of the Sydney Metro West CSSI and is described as major civil construction works between The Bays and Sydney CBD, including station excavation at Pyrmont and Hunter Street and tunnel excavation between the Bays and Hunter Street. Stage 2 (SSI 19238057) was approved on the 24 August 2022.

The Environmental Representatives for the Sydney Metro West Eastern Tunnel Package are:

- Michael Woolley
- Maulik Bapodara
- Swathi Gowda
- Jo Robertson

The Eastern Tunnelling Package (ETP) is being delivered by John Holland CPB Ghella Joint Venture (JCG) with the contract being awarded in November 2022. Sydney Metro notified DPHI that the date of commencement of construction was 17 March 2023. JCG have received Environmental Protection Licence (EPL 21784) for the project.

3.1 Key Construction Related Activities During the Period

Works conducted during the reporting period included:

Hunter Street East:

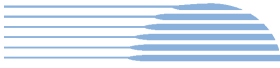
- Completion of excavation and wall support for Stage 1 in the southern portion of the site adjoining Hunter Street.
- Wall support works along the site boundary with O'Connell Street including rock anchor drilling and installation and FRP works. Use of a temporary ramp to the northern side of the site from the steel deck to allow further wall support activities. King Pile break back and FRP for the pile cap.
- Removal by hammer of a strip footing that had been placed along the boundary with 16 O'Connell Street for the former acoustic shed. Removal by wire saw of a mega column in the corner of the site adjacent O'Connell Street.
- Ongoing concrete deliveries and FRP activities for pours in the caverns. Use of air ventilation systems and other tunnelling support activities for works in the caverns.
- Set up alternative concrete delivery methods in preparation for cutting off ramp access to the caverns.
- Construction of footing for the tower crane to be used for the removal of the TBM.
- Use of the steel deck with access driveways to O'Connell Street and Hunter Street for load out of spoil using kibble and unloading frame.
- Use of the crib sheds and offices over Richard Johnson Square.
- Operation of the water treatment plant under the steel deck and discharge of treated water to stormwater.

Hunter Street West:

- Bulk excavation of the shaft using multiple rock hammers, excavators and rock saws. Use of the steel deck for load out of spoil using kibble and truck loading frame.
- Wall support around the perimeter of the excavation with shotcrete and rock anchors.
- Installation of permanent rock anchors under Hunter Street.
- Strengthening activities at the Skinner's Hotel completed.
- Ongoing deliveries and pedestrian management along Hunter Street.
- Milligan's development continued on the site adjacent Hunter Street West with the demolition of the building on the corner of Pitt Street and Hunter Street completed.

Pyrmont East:

- Ongoing TBM support such as segment deliveries.
- Ongoing use of Union Street for concrete pumping activities in the ancillary facility within the closed street. In November all pours were during daytime periods. It is planned to extend these periods into the evening and night in December.



- Installation of water proofing and FRP works in the cross over and station caverns.
- Ongoing use of the tunnel ventilation system.
- Use of site amenities/sheds on the steel deck to the east of the acoustic shed.

Pymont West:

- FRP works for the service adits inverts involving steel fixing and concrete pours.
- Drainage of water to the tunnelling operations.

The Bays:

- Both TBMs tunnelling towards Hunter Street, with both TBMs past Darling Harbour. Operation of the slurry plant. Ongoing works in cross passages to the east of Pymont.
- Water treatment and discharge using the construction water treatment plant.
- General support activities such as in the workshops, segment delivery and storage and use of site offices.
- Use of the truck marshalling area by trucks waiting to load up and/or attend other project sites.
- Use of a staff car parking area on the former CTP spoil shed area.

3.2 Key Construction Activities Look Ahead

The below works are planned to occur in the following reporting period:

- Ongoing activities as described above.
- Ongoing tunnelling of the TBMs towards Hunter Street sites.
- Excavation of the shafts at the Hunter Street sites 7 days per week including removal of the concrete slab at Hunter Street East.
- Ongoing construction of cross passages in the tunnel between Pymont and Hunter Street West.
- Setting up a diesel Tower Crane at Hunter Street East for retrieval of the TBMs.

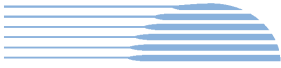
3.3 ER Inspections

Four ER inspections were conducted during the reporting period on each Tuesday in November. The following actions were raised during the inspections:

- JCG to ensure that IBCs at the Bays drain effectively to the bunded pallets should a spill occur. Further, when possible, ensure isolated drums/IBCs are provided with secondary containment.
- JCG to organise cleanup of accumulated sediment observed along the kerb and near stormwater drain adjacent to Hunter St West site

Inspections were conducted around 16 O'Connell Street where a hammer had broken through the wall (see Incidents section).

JCG were responsive to ER feedback during inspections and for the close out of the actions raised.



3.3.1 Photos



Figure 3.1 Hunter Street East: Location of strip footing adjacent 16 O'Connell Street.



Figure 3.2 Hunter Street East: Completion of excavation adjacent Hunter Street.



Figure 3.3 Hunter St West: Ongoing excavation of the shaft.



Figure 3.4 Hunter Street West: Ongoing excavation of the shaft.



Figure 3.5 Pyrmont East: Set up of acoustic tents for concrete pumps.

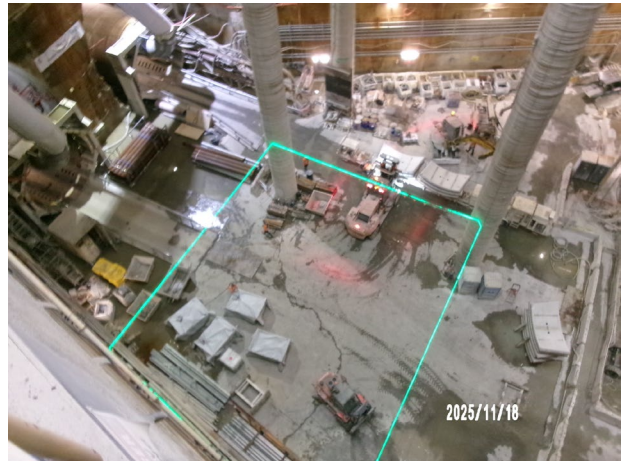


Figure 3.6 Pyrmont East: TBM support activities.



Figure 3.7 Pyrmont West: Service adit works.



Figure 3.8 Pyrmont West: Base of west shaft.



Figure 3.9 The Bays: Regular sweeping of haul roads was being undertaken during inspections.

3.4 Endorsed document/s

The following documents were signed, approved or endorsed during the reporting period.

- Waste Management Sub-Plan (Rev 5 – 10 November 2025)

The updates to the Waste Management Plan comprised changes to the receival site register.

3.5 Complaints

In November 2025, Sydney Metro's monthly complaint register recorded fifteen complaints which is a decrease from nineteen complaints reported in October 2025.

Twelve of the complaints related to the Hunter Street sites. Six of these related to noise during standard hours with four complaints reported at the Hunter East site and two at the Hunter West site. Three complaints related to noise from out of hours works (OOHWs) at the Hunter East site. Some of these complaints were referred from hotel guests. Two complaints related to cumulative construction issues including temporary footpath closure and short-term respite offer. One complaint related to property damage in an adjacent building to the Hunter East site. The complaints related to noise and vibration during standard hours corresponded to ongoing hammering of the shafts and removal of the strip footing at Hunter East. There remain ongoing communications between Sydney Metro, JCG and specific stakeholders around the Hunter Street East site.



Two complaints related to noise at the Pyrmont sites (down from eleven in October) and related to glare from a site structure and property damage. The reduction in complaints at Pyrmont corresponds to cessation of daytime and evening/night time hammering of the caverns due to completion of this work.

One complaint was received at the Bays related to street sweeping operations on James Craig Road near boats.

3.6 Compliance

3.6.1 Incidents

One incident occurred at Hunter Street East that was reported to DPHI under Condition A45 following a complaint of property damage. JCG have investigated remedial options. Hammering in the area is now on hold to minimise potential vibration impacts.

Further, an incident as defined under JCGs systems was reported to the ER regarding damage to a brick boundary wall while hammering a strip footing adjacent the boundary wall at 16 O'Connell Street.

3.6.2 Non-compliance

One Non-Compliance report (NCR) was issued by JCG during the period. This comprised:

- JCG have a system to manage heavy vehicles on the Project, however the system failed to ensure spoil haulage vehicles adhered to the nominated haulage routes identified in the CTMPs on 36 occasions out of 28,783 trips during the audit period which is a requirement of Condition D77.

3.6.3 Audits

An Independent Environmental Audit was conducted for the Metro West project in August which included ETP activities. The Final IEA Report was provided during the previous reporting period.

3.7 Looking Forward – Core Focus Areas

In the next reporting period, the ER will be focused on:

- General monitoring of construction activities
- Noise associated with excavation of the Hunter Street shafts
- Management of works to address incident at Hunter Street East
- Review of planned OOHs at Pyrmont



4 PHASE H2 – FIVE DOCK OVERHEAD TO UNDERGROUND RELOCATION WORKS (STAGE 1)

With the ER endorsement and submission to the Planning Secretary of the Sydney Metro West Stage 1 Phasing Report Rev 2.0, the **Phase H2 Five Dock Overhead to Underground Relocation Works** commenced as a package of works. This package will be delivered by Quickway Constructions with the contract being awarded in July 2025. Sydney Metro notified DPHI of the date of commencement of construction, being the 24th November 2025.

Phase H2 will involve the removal of two wooden power poles and the relocation of one wooden power pole. Electrical works on the Ausgrid network including underground relocation of five bays of overhead wiring outside of the Five Dock eastern construction site, along Second Avenue and Waterview Street, Five Dock. The scope of works will also involve installation of three pillars and four street light poles with service connections to nine private properties at Waterview Street and Second Avenue. The trenching works to install underground electrical services will occur within the roadway and footpaths of Waterview Street and Second Avenue. The excavation depth would be between 500mm to 1000mm below ground level and trenches would vary in width up to 950mm.

The ancillary facility at Silverwater used for Phase H1 will also be utilised for Phase H2 as a laydown area. A minor ancillary facility will be established at the Five Dock worksite for minor storage.

The Environmental Representatives for the Sydney Metro Stage 1 Phase H2 Package are:

- George Kollias
- Maulik Bapodara
- Jo Robertson

4.1 Key Construction Activities During the Period

Sydney Metro notified DPHI on 20th November 2025 of the date of commencement of construction, being the 24th November 2025.

Works undertaken since the commencement of construction on Monday 24th November 2025 and through the end of November include:

- Trench and lay conduits in front of 2 Second Ave and towards 118 Great North Road
- Road crossing complete outside 2 Second Ave, without the need for rock hammering
- Silverwater Compound established for stockpiling of materials for the works

4.2 Key Construction Activities Look Ahead

Upcoming works include:

- Trench and lay conduits across the Eastern Station Box (AFJV) Driveway on Second Ave
- Continue trenching around the corner on Waterview St
- Minor Ancillary Facility (MAF) scheduled to be installed on 2 Second Ave on Monday 1st December 2025

4.3 ER Inspections

Nil ER Inspections during the reporting period. The first ER Inspection was undertaken on 2nd December and will be reported on in the next period.

4.3.1 Photos

Not applicable as there were no inspections.



4.4 Endorsed Document/s

No ER endorsed documents for this period. Other items:

- A38 - Sydney Metro notified DPHI on 20th November 2025 of the date of commencement of Construction, being the 24th November 2025
- D43 - All comments closed, inclusion of consultation evidence with affected receivers and AA endorsement of the Detailed Noise and Vibration Impact Statement (DNVIS) Rev 5. DNVIS Rev 5 was provided to the AA and ER before the commencement of works
- D70 - Small Business Owners Engagement Plan (SBOEP) for Five Dock Utility Relocation Works submitted to DPHI for information (20 November 2025)

4.5 Complaints

Two (2) unrelated complaints received and responded to by the Project:

- 24/11/25 Complaint Noise & Vibration - OOHW; Notification of work: Resident disturbed by loud drilling work at Five Dock. No notification received about out-of-hours work this week. OOHW by others Council / Ebcon on Great North Road and unrelated to the Sydney Metro Project.
- 27/11/25 Complaint Utility - Supply Interruptions: Water was turned off to an adjacent Commercial Building. Unrelated to Sydney Metro Project; with water restored.

4.6 Compliance

4.6.1 Incidents

Nil.

4.6.2 Non-compliance

Nil.

4.6.3 Audits

Nil.

4.7 Looking Forward – Core Focus Area

Core focus areas for Five Dock Overhead to Underground Relocation Works include:

- Establishment of the Minor Ancillary Facility on Second Avenue and the commencement of construction scheduled from 1 December 2025
- The ongoing trenching and laying of conduits around the corner on Waterview St

Good news items include:

- Good controls established onsite during initial noisy work outside 2 Second Ave, with noise blankets on ATF surrounding the work area
- The OOHW schedule has been further refined where City of Canada Bay Council will consider ROLs during daytime shifts across the road intersections, reducing necessary out of hours night-time work to just the final connections



5 PHASE J – NORTH STRATHFIELD POWER ENABLING WORKS (STAGE 1)

With the ER endorsement and submission to the Planning Secretary of the Sydney Metro West Stage 1 Phasing Report Rev 1.8, the **Phase J North Strathfield Power Enabling Works** commenced as a package of works. This package will be delivered by Syscon with the contract being awarded in August 2025. Sydney Metro has notified DPHI of the date of commencement of construction, being the 5th December 2025.

Phase J will involve a small portion of electrical works that has been transferred from the Central Tunnelling Package (Phase B) to Phase J relating to the establishment of an electrical kiosk at North Strathfield to provide high voltage power to the site for follow-on contractors. The Principal Contractor undertaking Phase J will be responsible for completing the design for this scope and conducting the remaining works.

The majority of the work to establish a high voltage power connection has been completed by the Phase B Principal Contractor and only requires modifications to the end connection points at the kiosk and the live mains. The North Strathfield Power Enabling Works includes the following physical activities: investigations to establish locations of existing utilities; retrenching for low voltage (LV) works; and installation of electrical kiosk including internal reticulation and outage preparation works.

The Environmental Representatives for the Sydney Metro Stage 1 Phase J Package are:

- George Kollias
- Maulik Bapodara
- Jo Robertson

5.1 Key Construction Activities During the Period

Low Impact Works undertaken included surveying, electrical testing of the kiosk, property surveys, pre-construction dilapidation report photos/video and locating an underground cable.

Sydney Metro notified DPHI on 20th November 2025 of the date of commencement of construction, being the 5th December 2025.

5.2 Key Construction Activities Look Ahead

Establishment of the site and the commencement of construction from 5th December 2025. And the commencement of OOHW commencing weekend of 6th and 7th December 2025.

5.3 ER Inspections

Nil ER Inspections during the reporting period.

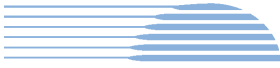
5.3.1 Photos

Not applicable as there were no inspections.

5.4 Endorsed Document/s

Project Plans including CEMP, NVMP, CTMP and associated documents were finalised and endorsed/approved through November 2025, including:

- C1 - Construction Environmental Management Plan (CEMP) Rev 01 dated and submitted 5th November 2025. ER Endorsement provided 6th November 2025



- C5 - Construction Noise and Vibration Management Plan (NVMP) Rev 03 dated 2nd November 2025 with included consultation, was endorsed by the Acoustic Advisor on 3rd November 2025. ER Endorsement provided 3rd November 2025, prior to submission to the Planning Secretary. DPHI RFI responded to. DPHI Planning Secretary approval received 28th November 2025
- D43 - Detailed Noise and Vibration Impact Statement (DNVIS) Rev 3 with included consultation, was finalised and endorsed by the Acoustic Advisor on 2nd December 2025. DNVIS Rev 3 was provided to the AA and ER before the commencement of works
- D85 - Construction Traffic Management Plan (CTMP) Rev 2 finalised 25th November 2025. Operations Planning (CJP) approval was received 25th November 2025. CTMP Rev 2 submitted to DPHI for information on 4th December 2025
- D86 - Heavy Vehicle Local Road (HVLR) Assessment Rev 01 dated 3rd November 2025 with included consultation and endorsement by a Level 3 Road Safety Auditor, was submitted on 5th November 2025. DPHI RFI responded to. DPHI Planning Secretary approval for use of Beronga Street, Waratah Street and Tenterfield Street by heavy vehicles was received 25th November 2025
- D90 - Construction Parking and Access Strategy (CPAS) Rev 1 dated 29 October 2025 with included consultation and Operations Planning (CJP), submission to the Planning Secretary on 31st October 2025. DPHI Planning Secretary approval was received 25th November 2025

Others:

- A38 - Sydney Metro notified DPHI on 1st December 2025 of the date of commencement of construction, being the 5th December 2025
- D70 - Small Business Owners Engagement Plan (SBOEP) for North Strathfield Electrical Kiosk Works submitted to DPHI for information 14/11/25

5.5 Complaints

Nil.

5.6 Compliance

5.6.1 Incidents

Nil.

5.6.2 Non-compliance

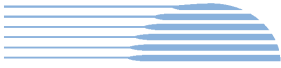
Nil.

5.6.3 Audits

Nil.

5.7 Looking Forward – Core Focus Area

- Establishment of the site and the commencement of construction from 5th December 2025.
- OOHW commencing weekend of 6th and 7th December 2025.



6 PHASE L – ROSEHILL POWER ENABLING WORKS (STAGE 3)

The Sydney Metro West Stage 3 of the planning approval process (including tunnel fit-out, station building and fit-out, operation and maintenance) for Sydney Metro West, application number SSI-22765520, was approved on 25 January 2023.

Sydney Metro submitted the Sydney Metro West Stage 3 - Phasing Report (Rev 1.0) to the Planning Secretary in August 2025. The **Rosehill Power Enabling Works (Phase L)** works deemed early works, under the Stage 3 approval are required to ensure follow on contractors' access to site and risk removal associated with delays. **Phase L** is being delivered by Quickway Construction Pty Ltd with the contract being awarded in August 2025.

The Environmental Representatives for the Sydney Metro Stage 3 Package are:

- Swathi Gowda
- Jo Robertson
- Michael Woolley
- Maulik Bapodara

6.1 Key Construction Activities During the Period

Low Impact works for Clyde / Rosehill pothole / slit trenching early works investigations; with works scheduled to be completed in December 2025, at this stage.

6.2 Key Construction Activities Look Ahead

Main construction activities are targeted to commence at the end of January 2026, at this stage.

6.3 ER Inspections

As no main construction works have occurred, no ER Inspections during the reporting period.

6.3.1 Photos

Not applicable as there were no inspections.

6.4 Endorsed Document/s

The ER has received the following draft documents for review and comment.

- Sydney Metro West – Rosehill HV Conduit Installations - Construction Environmental Management Plan (CEMP) 4567-ENV-PLN-01 (Revision 04, dated 13 November 2025)
- MCoA A24_Memo_Temporary Storage Areas (Revision 3.0, dated 13 November 2025)

6.5 Complaints

Nil.

6.6 Compliance

6.6.1 Incidents

Nil.



HBI Healthy Buildings International Pty Ltd

6.6.2 Non-compliance

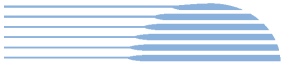
Nil.

6.6.3 Audits

Nil.

6.7 Looking Forward – Core Focus Area

- Ongoing review, comment and then endorsement as relevant of the CEMP, and other documents as required by the approved Phasing Report to enable Construction (for e.g. DNVIS).
- Construction commencement from end of January 2026, pending approvals.



7 SYDNEY METRO RETAINED OBLIGATIONS AND OTHER ACTIVITY

The Environmental Representatives for the Sydney Metro Retained Obligations and other Activities are:

- Swathi Gowda
- Jo Robertson

The Sydney Metro Retained Obligations and other Activities, refers to any activities where responsibility for completion has been retained by Sydney Metro outside of the main work packages. These works typically do not require an EPL and are often low risk, exempt or administrative in nature.

7.1 Key Construction Activities During the Period

The ER is not aware of other Sydney Metro managed construction activities during the period.

7.2 Key Construction Activities Look Ahead

The ER is not aware of other Sydney Metro managed upcoming construction activities.

7.3 ER Inspections

As there were no construction works, there were no ER Inspections during the reporting period.

7.3.1 Photos

Not applicable as there were no inspections.

7.4 Endorsed Document/s

Nil.

7.5 Complaints

No complaints have been reported to the ER during the reporting period.

7.6 Compliance

7.6.1 Incidents

No incidents have been reported to the ER during the reporting period.

7.6.2 Non-compliance

No non compliances have been reported to the ER during the reporting period.

7.6.3 Audits

Independent Audits are reported (where relevant) in other sections of this Monthly Report.



8 STATEMENT OF LIMITATIONS

Healthy Buildings International (HBI) has prepared this report in accordance with the requirements of:

- Condition A30(k) of the Sydney Metro West, Concept and Stage 1 SSI 10038 Approval (11 March 2021),
- Condition A32(k) of the Sydney Metro West – The Bays to Sydney CBD SSI 19238057 Approval (24 August 2022), and
- Condition A33 (k) of the Sydney Metro West – Rail Infrastructure, Stations, Precincts and Operations SSI 22765520 Approval (25 January 2023)

The report is for the sole purposes of Department of Planning, Housing and Infrastructure (DPHI) and Sydney Metro. It has been prepared based on generally accepted practices and standards at the time it was prepared. No other warranty, expressed or implied, is made as to the professional advice included in this Report. This report did not assess any aspects relating to safety.

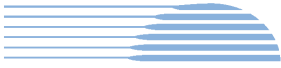
Where the Report indicates that information has been provided to HBI by third parties, HBI assumes no liability for any inaccuracies in or omissions to that information.

This Report was prepared based on the conditions encountered and information reviewed at this time. HBI disclaims responsibility for any changes that may have occurred after this time.

This Report should be read in full. No responsibility is accepted for use of any part of this report in any other context or for any other purpose or by third parties. This Report does not purport to give legal advice. Legal advice can only be given by qualified legal practitioners.

Except as required by law, no third party may use or rely on this Report unless otherwise agreed by HBI in writing. Except as specifically stated in this section, HBI does not authorise the use or findings of this Report by any third party.

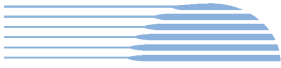
To the extent permitted by law, HBI expressly disclaims and excludes liability for any loss, damage, cost or expenses suffered by any third party relating to or resulting from the use of, or reliance on, any information contained in this Report. HBI does not admit that any action, liability or claim may exist or be available to any third party.



HBI Healthy Buildings International Pty Ltd

9 APPENDIX A – ER DOCUMENT ENDORSEMENT RECORDS (ETP ONLY)

- Waste Management Sub-Plan (Rev 5 – 10 November 2025)



HBI Healthy Buildings International Pty Ltd

10 APPENDIX B – ER DOCUMENT ENDORSEMENT RECORDS (STAGE 3 ONLY)

Nil