

Mr Rob Sherry  
Team Leader Compliance – Government Projects  
Department of Planning, Housing and Infrastructure  
Locked Bag 5022  
PARRAMATTA NSW 2124

6 February 2026  
Ref:201208-ER\_DPHI-January 2026

Dear Rob

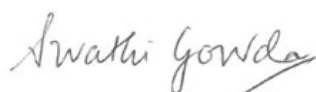
**RE: Sydney Metro - Sydney Metro West SSI - ER Monthly Report for January 2026**

Healthy Buildings International (HBI) submits this report to the Secretary in accordance with:

- Condition A30 (k) of the Sydney Metro West, Concept and Stage 1 SSI 10038 Approval (11 March 2021), and associated modifications (MOD 1 - 28 July 2021, MOD 2 - 3 June 2022, MOD3 – 4 July 2022, MOD 4 - 23 December 2022, MOD 5 – 20 September 2023 and MOD 6 – 6 November 2024); and
- Condition A32(k) of the Sydney Metro West – The Bays to Sydney CBD SSI 19238057 Approval (24 August 2022) and associated modifications (MOD 1 – April 2023, MOD 2 – October 2023, and MOD 3 – November 2024)
- Condition A33 (k) of the Sydney Metro West – Rail Infrastructure, Stations, Precincts and Operations SSI 22765520 Approval (25 January 2023)

The attached summary details the key activities undertaken by Environmental Representatives for Sydney Metro – Sydney Metro West for the month of January 2026.

Yours sincerely



Swathi Gowda  
Environmental Representative

Cc:

DPHI: Major Projects Portal

Sydney Metro: John Ieroklis, Maria Doumit, Andrew Hendy, Cath Snelgrove, Ari Stypel, Ryan Butler, Syed Shah, Valerie Lebon, Sara Yasipourtehrani

Contractors: Anne Anderson (AFJV), Steph Mifsud (GLC), Sally Reynolds (JCG)

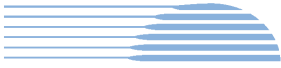


## Table of Contents

<b>1</b>	<b>PHASE B - CENTRAL TUNNELLING PACKAGE (STAGE 1)</b>	<b>4</b>
1.1	KEY CONSTRUCTION ACTIVITIES DURING THE PERIOD	4
1.2	KEY CONSTRUCTION ACTIVITIES LOOK AHEAD	5
1.3	ER INSPECTIONS	5
1.3.1	<i>Photos</i>	5
1.4	ENDORSED DOCUMENTS	6
1.5	COMPLAINTS	7
1.6	COMPLIANCE	7
1.6.1	<i>Incidents</i>	7
1.6.2	<i>Non-compliance and Potential Non Compliance</i>	7
1.6.3	<i>Audits</i>	7
1.7	LOOKING FORWARD – CORE FOCUS AREAS	7
<b>2</b>	<b>PHASE F – WESTERN TUNNELLING PACKAGE (STAGE 1)</b>	<b>8</b>
2.1	KEY CONSTRUCTION ACTIVITIES DURING THE PERIOD	8
2.2	CONSTRUCTION ACTIVITIES LOOK AHEAD	9
2.3	ER INSPECTIONS	9
2.3.1	<i>Photos</i>	10
2.4	ENDORSED DOCUMENTS	12
2.5	COMPLAINTS	12
2.5.1	<i>Incidents</i>	12
2.5.2	<i>Non-compliance</i>	12
2.5.3	<i>Audits</i>	12
2.6	LOOKING FORWARD – CORE FOCUS AREA	13
<b>3</b>	<b>PHASE G – EASTERN TUNNEL PACKAGE (STAGE 2)</b>	<b>14</b>
3.1	KEY CONSTRUCTION RELATED ACTIVITIES DURING THE PERIOD	14
3.2	KEY CONSTRUCTION ACTIVITIES LOOK AHEAD	15
3.3	ER INSPECTIONS	15
3.3.1	<i>Photos</i>	15
3.4	ENDORSED DOCUMENT/S	17
3.5	COMPLAINTS	17
3.6	COMPLIANCE	17
3.6.1	<i>Incidents</i>	17
3.6.2	<i>Non-compliance</i>	17
3.6.3	<i>Audits</i>	18
3.7	LOOKING FORWARD – CORE FOCUS AREAS	18
<b>4</b>	<b>PHASE H2 – FIVE DOCK OVERHEAD TO UNDERGROUND RELOCATION WORKS (STAGE 1)</b>	<b>19</b>
4.1	KEY CONSTRUCTION ACTIVITIES DURING THE PERIOD	19
4.2	KEY CONSTRUCTION ACTIVITIES LOOK AHEAD	19
4.3	ER INSPECTIONS	19
4.3.1	<i>Photos</i>	20
4.4	ENDORSED DOCUMENT/S	20
4.5	COMPLAINTS	20
4.6	COMPLIANCE	20
4.6.1	<i>Incidents</i>	20
4.6.2	<i>Non-compliance</i>	20
4.6.3	<i>Audits</i>	20
4.7	LOOKING FORWARD – CORE FOCUS AREA	20
<b>5</b>	<b>PHASE J – NORTH STRATHFIELD POWER ENABLING WORKS (STAGE 1)</b>	<b>21</b>
5.1	KEY CONSTRUCTION ACTIVITIES DURING THE PERIOD	21



5.2	KEY CONSTRUCTION ACTIVITIES LOOK AHEAD .....	21
5.3	ER INSPECTIONS .....	21
5.3.1	<i>Photos</i> .....	22
5.4	ENDORSED DOCUMENT/S.....	22
5.5	COMPLAINTS.....	22
5.6	COMPLIANCE .....	22
5.6.1	<i>Incidents</i> .....	22
5.6.2	<i>Non-compliance</i> .....	22
5.6.3	<i>Audits</i> .....	22
5.7	LOOKING FORWARD – CORE FOCUS AREA .....	22
<b>6</b>	<b>PHASE L – ROSEHILL POWER ENABLING WORKS (STAGE 3) .....</b>	<b>23</b>
6.1	KEY CONSTRUCTION ACTIVITIES DURING THE PERIOD.....	23
6.2	KEY CONSTRUCTION ACTIVITIES LOOK AHEAD .....	23
6.3	ER INSPECTIONS .....	23
6.3.1	<i>Photos</i> .....	23
6.4	ENDORSED DOCUMENT/S.....	23
6.5	COMPLAINTS.....	23
6.6	COMPLIANCE .....	23
6.6.1	<i>Incidents</i> .....	23
6.6.2	<i>Non-compliance</i> .....	24
6.6.3	<i>Audits</i> .....	24
6.7	LOOKING FORWARD – CORE FOCUS AREA .....	24
<b>7</b>	<b>SYDNEY METRO RETAINED OBLIGATIONS AND OTHER ACTIVITY .....</b>	<b>25</b>
7.1	KEY CONSTRUCTION ACTIVITIES DURING THE PERIOD.....	25
7.2	KEY CONSTRUCTION ACTIVITIES LOOK AHEAD .....	25
7.3	ER INSPECTIONS .....	25
7.3.1	<i>Photos</i> .....	25
7.4	ENDORSED DOCUMENT/S.....	25
7.5	COMPLAINTS.....	25
7.6	COMPLIANCE .....	25
7.6.1	<i>Incidents</i> .....	25
7.6.2	<i>Non-compliance</i> .....	25
7.6.3	<i>Audits</i> .....	25
<b>8</b>	<b>STATEMENT OF LIMITATIONS .....</b>	<b>26</b>
<b>9</b>	<b>APPENDIX A – ER DOCUMENT ENDORSEMENT RECORDS (ETP ONLY) .....</b>	<b>27</b>
<b>10</b>	<b>APPENDIX B – ER DOCUMENT ENDORSEMENT RECORDS (STAGE 3 ONLY) .....</b>	<b>28</b>



## **1 PHASE B - CENTRAL TUNNELLING PACKAGE (STAGE 1)**

The Environmental Representatives for Phase B of Sydney Metro West are:

- Michael Woolley
- Maulik Bapodara
- Swathi Gowda
- Jo Robertson

Phase B – Central Tunnelling Package (CTP) is being delivered by Acciona Ferrovia Joint Venture (AFJV). Phase B of Sydney Metro West has been further broken into:

- Phase B1: Civil works
- Phase B2: Tunnelling works

The AFJV hold EPL 21610 for this Phase of works. Activities defined as Phase B2-Tunneling Works in the Staging Report for Metro West commenced during the November 2022 reporting period at Burwood North. Substantial Construction has been achieved under the CTP contract for the remaining sites. AFJV are now acting in a Transitional Handover Services capacity that comprises ongoing maintenance activities, minor rectification/defects work, and specific works as required of Sydney Metro.

### **1.1 Key Construction Activities During the Period**

#### **The Bays**

- Operation of the water treatment plant and management/maintenance of areas handed over including the tunnels.
- Some areas of the station box in use by ETP for laydown.

#### **Five Dock**

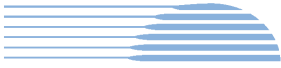
- East and West Shaft sites: No AFJV site presence at the surface during inspections. Runoff water in the shafts is automatically pumped to the Bays for treatment.
- Use of house ongoing at 21 Waterview Street adjacent the eastern shaft by Sydney Metro personnel.
- Various activities outside the sites by other SM contractors as detailed for Phase H2.

#### **Burwood North**

- Deliveries and unloading of items to the surface.
- Water treatment plant not operating – general maintenance activities only. Plan to re-activate the WTP at the end of the month as part of handover planning.
- South Shaft: Limited or no works.

#### **North Strathfield**

- No works at the site which was locked up and no personnel on site permanently.
- Pumping of water from the station box to the Bays for treatment and discharge.
- Handover of the western end hardstand to Sydney Metro utilities contractor.



## Sydney Olympic Park

- Tunnel maintenance with minor repairs/defect rectification ongoing.
- Use of a workshop and laydown of materials at the surface for tunnellers. Ongoing consolidation of stored equipment.
- Remaining site sheds are being used to accommodate the workforce. Delivery Office not in use.

AFJV continue to manage all sites (except much of the Bays which has been handed over to ETP Contractors).

### 1.2 Key Construction Activities Look Ahead

- Ongoing activities as described above.
- Minor defect rectification works ongoing in the tunnels.
- Ongoing operation of the water treatment plant at the Bays with water discharges ongoing.
- Ongoing maintenance of the water treatment plant at Burwood North.
- Ongoing management/maintenance/caretaking of sites.

### 1.3 ER Inspections

There were two ER inspections conducted during the reporting period on 15<sup>th</sup> and 29<sup>th</sup> January 2026, with each site being inspected once in the month. No actions were raised during the inspections.

#### 1.3.1 Photos

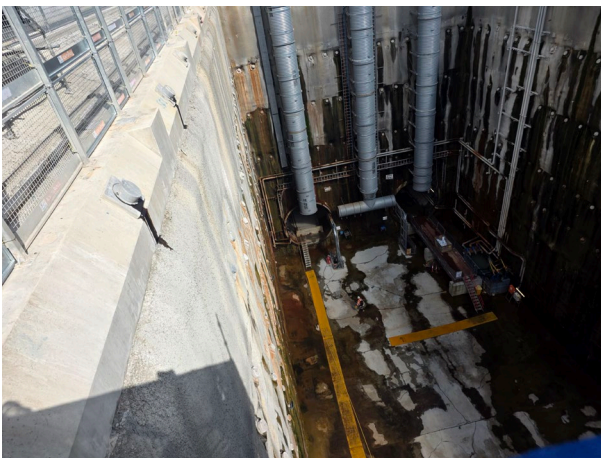


Figure 1.1 Station Box (The Bays) - Ongoing maintenance activities.



Figure 1.2 Ongoing operation of the water treatment plant at the Bays (The Bays).

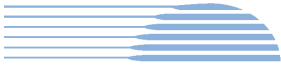


Figure 1.3 Eastern Shaft – Automatic water management system operating at the base of the East Shaft (Five Dock).



Figure 1.4 Western Shaft – no apparent works at the surface or Station Box (Five Dock).



Figure 1.5 Surface hardstand areas (Burwood North).



Figure 1.6 No visible activities occurring in the station box (Burwood North).



Figure 1.7 No works observed in the station box at North Strathfield (NS).



Figure 1.8 Station Box (SOP).

#### 1.4 Endorsed Documents

Nil



## **1.5 Complaints**

Based on Sydney Metro Complaint data issued during January 2026, there were two complaints reported that related to AFJV/CTP activities. One was for a potable water leak at Burwood North which was reported by AFJV to have been promptly addressed. The other was related to a property damage claim.

## **1.6 Compliance**

### **1.6.1 Incidents**

No incidents as defined in the Infrastructure Approval were reported by AFJV during the reporting period.

### **1.6.2 Non-compliance and Potential Non Compliance**

No non compliances were raised by AFJV or Sydney Metro during the reporting period and none were observed by the ER.

### **1.6.3 Audits**

Nil in reporting period.

## **1.7 Looking Forward – Core Focus Areas**

- Ongoing management of sites during Transitional Handover Services.



## 2 PHASE F – WESTERN TUNNELLING PACKAGE (STAGE 1)

The Environmental Representatives for Phase F of Sydney Metro West are:

- Swathi Gowda
- George Kollias
- Michael Woolley
- Maulik Bapodara
- Jo Robertson

Phase F – Western Tunnelling Package (WTP) is being delivered by Gamuda Australia Laing O’Rourke Consortium (GLC).

GLC are constructing this Phase of Sydney metro West under EPL 21676.

### 2.1 Key Construction Activities During the Period

During the reporting period, the following activities were being undertaken at Westmead, Parramatta and the Clyde stabling and maintenance facility which includes the Rosehill, Clyde Dive and Clyde MSF construction sites:

#### Westmead

- Cavern lining and other Form Reo Pour (FRP) works ongoing
- TBM 1 and TBM 2 operations (traverse & dismantle) – ongoing and nearing completion
  - Main Drive OSOM OOH completed on 22 and 23 January 2026
- Formwork dismantling

#### Parramatta

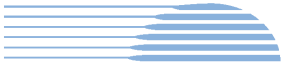
- Station Box:
  - Station Box Material Loadout
  - Tunnel Invert / Cross Passage Concrete pours
  - Tunnel Nozzles Secondary Lining & FRP (Eastern end of Station Box)
- Archaeology:
  - Zone 10 archaeological investigations and clearance works continuing
  - Zone 6b archaeological investigations and clearance works

#### Rosehill

- Continuing to strip the tunnels and remove redundant items
- All cross passage excavation complete –FRP and final fit out of remaining cross passages ongoing
- Water Treatment Plant operation including off-site discharge is ongoing
- Rearrangement of Mechanical and Electrical (M&E) workshop, to handover to MSF
- Removal of redundant infrastructure for e.g. grout plant, cooling towers

#### Clyde Dive

- Demobilisation of tunnel and lining supporting equipment ongoing
- Caverns FRP ongoing
- Bulk earth works ongoing across site
- Chipseal of completed earthworks scheduled to commence last week of January 2026
- Installation of drainage and fencing ongoing
- All planks installed on Clyde Dive portal for Plant room



- Perimeter concrete barriers requiring James Ruse Drive (JRD) closure and tree removal completed 21 January 2026
- Removal of M&E workshop commenced and ongoing

### **Clyde MSF**

- Ongoing maintenance of landscaping areas as required
- Portion 12B backfilling of previous crib and site office area complete - with treated PASS placement ongoing
- Commenced central area of remaining Flood Basin excavation (Stage 2)

### **SOP**

- Handed over on 15 April 2025

## **2.2 Construction Activities Look Ahead**

The key construction activities planned are similar to those listed in Section 2.1, with the addition of the following:

- Various OOHW (conducted under EPL)
- Parramatta - Sewer relining and Macquarie Lane diversion OOHW (dates TBC)
- Westmead - Planning for staged Shed Removal (scheduled to commence ~ March 2026)

## **2.3 ER Inspections**

Currently, the sites are divided into two groups and visited typically fortnightly (weather permitting) for ER inspections. The two groups are:

- Parramatta and Westmead
- Clyde Dive, Clyde MSF and Rosehill

Three ER inspections were conducted during the reporting period – 14, 21 and 28 January 2026; with opportunities for improvement (OFIs) identified and the following action(s) (summarised) raised during the month as follows:

### **Westmead**

- Nil

### **Clyde Dive**

- Action raised for provision of appropriate control for washout of any excess concrete near fencing works (post hole installation).
- Action raised to install further protection for vegetation / visual signage reminding operators to prevent any potential impacts from excavator slew– noting that section of work area had some physical delineation / offset in place.

### **Parramatta, Rosehill, Clyde Dive and MSF**

- Three actions raised for weed removal across above sites in specific locations for each site



### 2.3.1 Photos



Figure 2.1- Parramatta: Eastern Station Box - GLC reports Tunnel Nozzles secondary lining and FRP works.



Figure 2.2 – Parramatta: Western Station Box - no hammering works at the time of the ER Inspection; material load out observed.



Figure 2.3 – Parramatta: Station Box material loadout via crane and kibble.

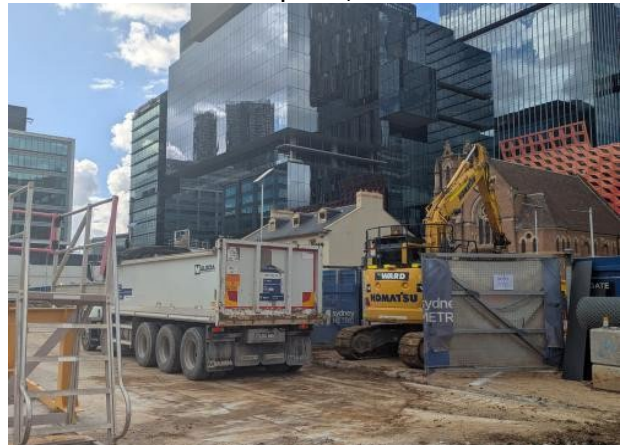


Figure 2.4 – Parramatta: Material loadout from Zone 10 - Macquarie Lane Section.



Figure 2.5 – Westmead: Surface level – Cranage underway with 750T lifting Main Drive of TBM.



Figure 2.6 – Westmead: TBM demobilisation, formwork dismantling, cavern lining and other FRP works ongoing.

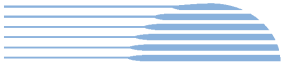


Figure 2.7 – View from Rosehill: Flood Basin Stage 2 works - concrete break up (hammering), with misting cannon operational.



Figure 2.8 – Rosehill: Demobilisation of grout plant.



Figure 2.9 – Clyde MSF (West): Portion 12B backfilling of previous crib and site office area complete – treated PASS placement ongoing.



Figure 2.10 – Clyde MSF (West): Pedestrian fencing work commenced and continuing.



Figure 2.11 – Clyde Dive: Section of northern area, with finished levels, scheduled to be chipsealed late January 2026.

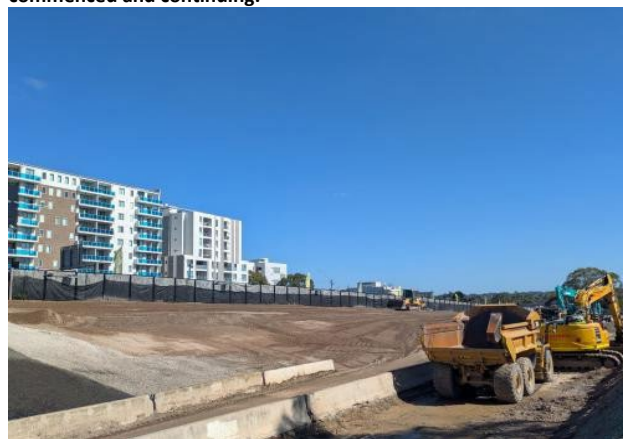


Figure 2.12 – Clyde Dive: Preparatory works for chipsealing underway on section of north-western embankment.

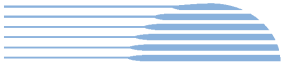


Figure 2.13– Clyde Dive: Fencing works along north-eastern section.



Figure 2.14 – Clyde Dive: Perimeter concrete barriers requiring JRD closure completed on 21 January 2026.

## 2.4 Endorsed Documents

The following documents were approved or endorsed by the ER during the reporting period:

- Nil

## 2.5 Complaints

Based on the Sydney Metro Complaint Register for January 2026, five complaints reported during the month, compared to one complaint in December 2025. Of these complaints, three complaints were recorded as unrelated to SM activities. Remaining complaints recorded in January 2026 are summarised below:

### Parramatta

- One complaint related to worker behaviour (complaint about truck driving recklessly)

### Westmead

- One complaint about noisy works (Standard /OOHW)

#### 2.5.1 Incidents

No incidents considered to represent Incidents as defined under the Infrastructure Approval were reported to or observed by the ER during the reporting period.

Nil Class 3 incidents reported under GLC/SM reporting system during the reporting period.

#### 2.5.2 Non-compliance

Nil non-compliances reported to the ER during the reporting period.

#### 2.5.3 Audits

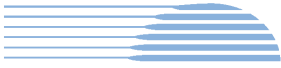
Nil during the reporting period.



## **2.6 Looking Forward – Core Focus Area**

The core focus areas for works (including upcoming works) are:

- Clyde Dive - Bulk earth works, removal of removal of concrete hardstand areas and fencing continuing.
- Clyde Dive - Chipseal of completed earthworks.
- Parramatta - Sewer relining and Macquarie Lane diversion OOHW (dates TBC).
- Westmead - Staged Shed Removal (scheduled to commence ~ March 2026).
- Site demobilisation and handover activities of portions.



### 3 PHASE G – EASTERN TUNNEL PACKAGE (STAGE 2)

The Sydney Metro West Eastern Tunnel Package is Stage 2 of the Sydney Metro West CSSI and is described as major civil construction works between The Bays and Sydney CBD, including station excavation at Pyrmont and Hunter Street and tunnel excavation between the Bays and Hunter Street. Stage 2 (SSI 19238057) was approved on the 24 August 2022.

The Environmental Representatives for the Sydney Metro West Eastern Tunnel Package are:

- Michael Woolley
- Maulik Bapodara
- Swathi Gowda
- Jo Robertson

The Eastern Tunnelling Package (ETP) is being delivered by John Holland CPB Ghella Joint Venture (JCG) with the contract being awarded in November 2022. Sydney Metro notified DPHI that the date of commencement of construction was 17 March 2023. JCG have received Environmental Protection Licence (EPL 21784) for the project.

#### 3.1 Key Construction Related Activities During the Period

Works conducted during the reporting period included:

##### Hunter Street East:

- TBM Ruby breakthrough into the Station Cavern during the previous reporting period. No TBM retrieval activities occurred in January.
- Wall support works completed along the site boundary with O'Connell Street and steel deck in this area completed.
- Ongoing concrete deliveries and FRP activities for pours in the caverns. Use of air ventilation systems and other tunnelling support activities for works in the caverns. Assembly of large formwork structures for the concrete pours.
- Use of the steel deck with access driveways to O'Connell Street and Hunter Street for load out of spoil using kibble and unloading frame.
- Use of the crib sheds and offices over Richard Johnson Square.
- Operation of the water treatment plant under the steel deck and discharge of treated water to stormwater.

##### Hunter Street West:

- Bulk excavation of the shaft using multiple rock hammers, excavators and rock saws. Use of the steel deck for load out of spoil using kibble and truck loading frame.
- Wall support around the perimeter of the excavation with shotcrete and rock anchors.
- Ongoing installation of permanent rock anchors under Hunter Street.
- Ongoing deliveries and pedestrian management along Hunter Street.

##### Pyrmont East:

- Ongoing TBM support such as segment deliveries.
- Ongoing use of Union Street for concrete pumping activities in the ancillary facility within the closed street. Concrete pours were mostly during daytime periods with some pours extending into the evening and nighttime periods.
- Ongoing FRP works for the invert in the cross over and station caverns.
- Ongoing use of the tunnel ventilation system.
- Use of site amenities/sheds on the steel deck to the east of the acoustic shed.

##### Pyrmont West:

- Ongoing FRP works for the service adits.
- Drainage of water to the tunnelling operations.



### The Bays:

- Operation of the slurry plant. Some operational issues requiring clean-up of sediment on hardstand areas across the site. Ongoing works in cross passages to the east of Pyrmont.
- Saw cutting and rock hammering in the station box.
- Water treatment and discharge using the construction water treatment plant.
- General support activities such as in the workshops, segment delivery and storage and use of site offices.
- Use of the truck marshalling area by trucks waiting to load up and/or attend other project sites.
- Use of a staff car parking area on the former CTP spoil shed area.
- Ongoing excavation and construction of cross passages.

### 3.2 Key Construction Activities Look Ahead

The below works are planned to occur in the following reporting period:

- Ongoing activities as described above.
- Completion of TBM tunnelling by TBM Jessie at Hunter Street.
- Retrieval of TBM components at Hunter Street East including use of the diesel Tower Crane during daytime and OOHs.
- Excavation of the shafts at the Hunter Street sites 7 days per week including removal of the concrete slab at Hunter Street East.
- Concrete pours at Hunter Street East through drop chutes on the steel deck including OOHs.
- Ongoing construction of cross passages in the tunnel between Pyrmont and Hunter Street West.

### 3.3 ER Inspections

Two ER inspections were conducted during the reporting period on Tuesday 13<sup>th</sup> and 20<sup>th</sup> January. The reduced number of inspections was due to holiday period and reduced works after Australia Day. The following actions were raised during the inspections:

- Remove or paint over graffiti on the site crash barrier at the corner of Hunter and O'Connell Streets.
- Re-instate noise mat on the kibble loading frame at Hunter St East.

JCG were responsive to ER feedback during inspections and for the close out of the actions raised.

#### 3.3.1 Photos

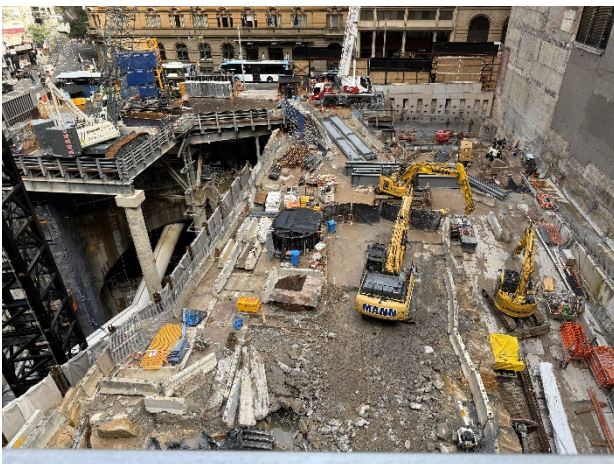


Figure 3.1 Hunter Street East: View from site sheds.

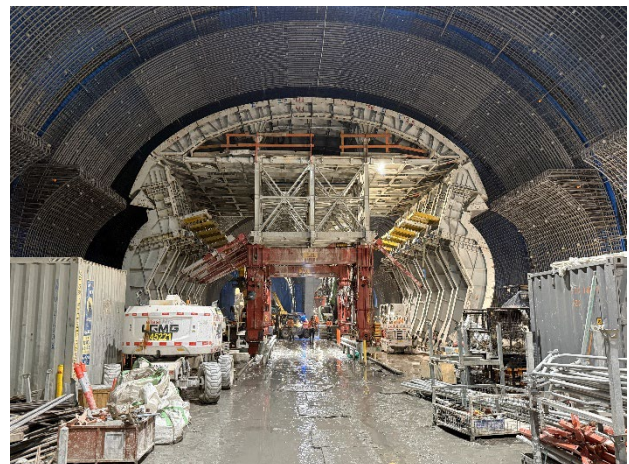


Figure 3.2 Hunter Street East: FRP works in the various caverns.

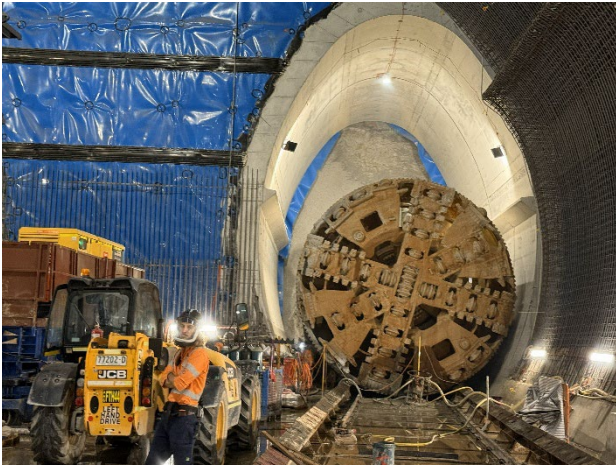
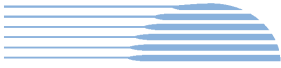


Figure 3.3 Hunter St East: TBM breakthrough Ongoing excavation of the shaft. Anchor installation under Hunter Street.



Figure 3.4 Hunter Street West: Ongoing excavation of the shaft.

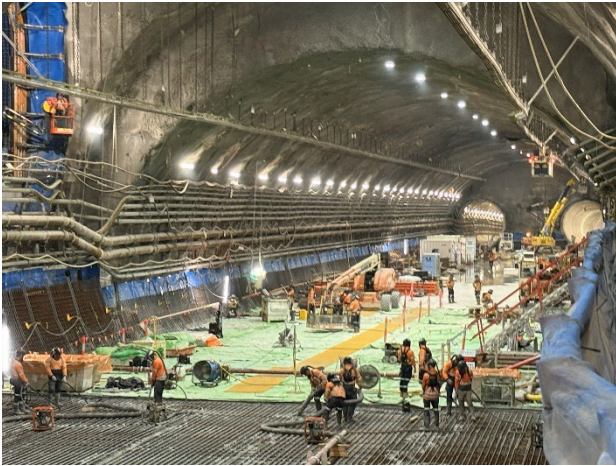


Figure 3.5 Pyrmont East: Concrete pours in the cross over cavern.



Figure 3.6 Pyrmont East: Invert pour near the service adits.



Figure 3.7 Pyrmont East: Concrete delivery on Union Street.



Figure 3.8 The Bays: Installation of temporary services in trenches in the Station Box.



Figure 3.9 The Bays: Hardstand areas outside spoil shed.

### 3.4 Endorsed document/s

The following documents were signed, approved or endorsed during the reporting period.

- Nil

### 3.5 Complaints

Based on the Monthly Complaints Register from Sydney Metro, it is understood that there were nineteen complaints recorded during January 2026 compared to ~ four in December 2025.

Eight of the complaints were from Hunter Street; of these complaints, two noise complaints (1 for OOHW and 1 for works during standard hours) were recorded as unrelated to SM activities in the Complaints Register. Remaining six complaints related to noise and vibration (1 for OOHWs and 3 for works during standard hours); one complaint related to property damage; and one complaint was related to visual amenity (flashing light during daytime hours). The complaints correspond with hammering at both Hunter Street sites, as well as concrete and other activities OOHs.

Ten of the complaints were from the Pyrmont sites; of these complaints – two noise complaints (1 for OOHW/ during standard hours and 1 for noise OOHW) and one complaint regarding ongoing works on Paternoster Row (access and parking related) that were recorded as unrelated to SM activities in the Complaints Register. Remaining complaints related to six noise and vibration from a mix of either OOHWs, works during standard hours, or both and one complaint related to respite offers. The increase in noise complaints at Pyrmont corresponded with concrete delivery and pumping activities occurring within the closed area of Union Street.

One complaint from the Bays in relation to worker behaviour (unsafe driver behaviour).

### 3.6 Compliance

#### 3.6.1 Incidents

No incidents were reported to DPHI under Condition A45 during the reporting period.

#### 3.6.2 Non-compliance

One Non-Compliance report (NCR) was issued by JCG during the period related to a small number of trucks going outside of approved haulage routes during the previous reporting period of December 2025 (Condition D77).



### **3.6.3 Audits**

Nil during the reporting period.

### **3.7 Looking Forward – Core Focus Areas**

In the next reporting period, the ER will be focused on:

- General monitoring of construction activities
- Noise associated with excavation of the Hunter Street shafts
- Planned OOHs at Pyrmont and Hunter Street sites



## 4 PHASE H2 – FIVE DOCK OVERHEAD TO UNDERGROUND RELOCATION WORKS (STAGE 1)

With the ER endorsement and submission to the Planning Secretary of the Sydney Metro West Stage 1 Phasing Report Rev 2.0, the **Phase H2 Five Dock Overhead to Underground Relocation Works** commenced as a package of works. This package will be delivered by Quickway Constructions with the contract being awarded in July 2025. Construction commenced on 24<sup>th</sup> November 2025.

Phase H2 will involve the removal of two wooden power poles and the relocation of one wooden power pole. Electrical works on the Ausgrid network including underground relocation of five bays of overhead wiring outside of the Five Dock eastern construction site, along Second Avenue and Waterview Street, Five Dock. The scope of works will also involve installation of three pillars and four street light poles with service connections to nine private properties at Waterview Street and Second Avenue. The trenching works to install underground electrical services will occur within the roadway and footpaths of Waterview Street and Second Avenue. The excavation depth would be between 500mm to 1000mm below ground level and trenches would vary in width up to 950mm.

The ancillary facility at Silverwater used for Phase H1 will also be utilised for Phase H2 as a laydown area. A minor ancillary facility will be established at the Five Dock worksite for minor storage.

The Environmental Representatives for the Sydney Metro Stage 1 Phase H2 Package are:

- George Kollias
- Maulik Bapodara
- Jo Robertson

### 4.1 Key Construction Activities During the Period

Works conducted during the reporting period included:

- Completed all trenching on Second Ave and Waterview St
- All streetlights have been installed
- Electrical pole installed
- Proving conduits and pulling cable
- Preparations for connection from pole to a pillar
- Property connections occurring at two properties - Waterview St and Second Ave
- Removal of MAF on Second Ave completed 30<sup>th</sup> January

### 4.2 Key Construction Activities Look Ahead

Upcoming works include:

- Remaining pillars and property connections
- Scheduled outage and cutover dates 3<sup>rd</sup> March and 10<sup>th</sup> March, includes OOH Works

### 4.3 ER Inspections

One ER Inspection undertaken during the reporting period, on 23<sup>rd</sup> January 2026. No actions were raised. Observed pedestrian diversion around active work areas and signage in place. Discussions had regarding complaint about alleged damage to fence. Discuss temporary restorations and turf placement to reinstate verges.



#### 4.3.1 Photos



Figure 4.1 Pedestrian diversion around active work areas. Signage in place as per TGS.



Figure 4.2 Completed all trenching on Second Ave and Waterview St.

#### 4.4 Endorsed Document/s

No ER endorsed documents for this period.

#### 4.5 Complaints

Two complaints received and responded to by the Project this period, one with regards to an obstructed driveway (Contractor had liaised with resident directly prior to the complaint) and alleged damage to lawn, concrete footpath and fence outside the property (temporary reinstatements will occur and damage to fence not caused by works).

#### 4.6 Compliance

##### 4.6.1 Incidents

Nil.

##### 4.6.2 Non-compliance

Nil.

##### 4.6.3 Audits

Nil.

#### 4.7 Looking Forward – Core Focus Area

Core focus areas for Five Dock Overhead to Underground Relocation Works include:

- Site work largely complete, awaiting final outages / connections on 2<sup>nd</sup> & 3<sup>rd</sup> and 9<sup>th</sup> and 10<sup>th</sup> March 2026
- Next ER / AA Inspection to be undertaken during the outage in early March 2026



## 5 PHASE J – NORTH STRATHFIELD POWER ENABLING WORKS (STAGE 1)

With the ER endorsement and submission to the Planning Secretary of the Sydney Metro West Stage 1 Phasing Report Rev 1.8, the **Phase J North Strathfield Power Enabling Works** commenced as a package of works. This package will be delivered by Syscon with the contract being awarded in August 2025. Construction commenced on 5<sup>th</sup> December 2025.

Phase J will involve a small portion of electrical works that has been transferred from the Central Tunnelling Package (Phase B) to Phase J relating to the establishment of an electrical kiosk at North Strathfield to provide high voltage power to the site for follow-on contractors. The Principal Contractor undertaking Phase J will be responsible for completing the design for this scope and conducting the remaining works.

The majority of the work to establish a high voltage power connection has been completed by the Phase B Principal Contractor and only requires modifications to the end connection points at the kiosk and the live mains. The North Strathfield Power Enabling Works includes the following physical activities: investigations to establish locations of existing utilities; retrenching for low voltage (LV) works; and installation of electrical kiosk including internal reticulation and outage preparation works.

The Environmental Representatives for the Sydney Metro Stage 1 Phase J Package are:

- George Kollias
- Maulik Bapodara
- Jo Robertson

### 5.1 Key Construction Activities During the Period

Works conducted during the reporting period included:

- Excavation and installation of LV conduits outside site compound hoarding
- Excavation and installation of LV conduits in Queen St
- Landing of kiosk
- Internal saw-cutting and trenching
- Laying of conduits within site compound
- Rework of footpath outside Focus Care

### 5.2 Key Construction Activities Look Ahead

Upcoming works include:

- Finalise onsite works
- Hoarding re-configuration to box-out kiosk
- Cutover during outage 19<sup>th</sup> February 2026, includes OOH Works

### 5.3 ER Inspections

Two ER Inspection undertaken during the reporting period, on 23<sup>rd</sup> and 28<sup>th</sup> January 2026, one during OOH Works. No actions were raised. Observed traffic control set-up and detours in place. Noise blankets set-up for saw-cutting area, and saw cutting undertaken before 10pm. Sucker Truck reorientated with its next location of work, to have the truck noise further away from residences, approximately doubling the distance away from the receivers as compared to the initial positioning.

DPHI Post Approvals attended the ER Inspection on Wednesday 28<sup>th</sup> January 2026. Discussed alterations to site hoarding at the Kiosk location, effectively implementing a noise barrier for all works on the site. Discussed OOH Works



undertaken on the corner of Queen St and Beronga St on 23<sup>rd</sup> & 24<sup>th</sup> January without community complaint. Observed temporary restorations of footpaths, including the reinstatement in front of the Health Provider.

### 5.3.1 Photos



Figure 5.1 Sucker Truck reorientated with its next location of work, to have the truck noise further away from residences. Close to doubling the distance away from the receivers as compared to the initial positioning parallel to kerb line. Noise blankets also in place adjacent works.



Figure 5.2 ER Inspection / DPHI Site Visit. Cable terminations being undertaken within Kiosk. Discussed alterations to site hoarding at the Kiosk location, effectively implementing a noise barrier for all works on the site. Noise blankets have also been installed on the site gate.

### 5.4 Endorsed Document/s

ER endorsed documents for this period:

- OOHW Approval 1 Rev 5 – ER Approval 16/01/26

### 5.5 Complaints

One complaint received and responded to by the Project this period. Complaint 08/01/26 Air quality: concerns about dust generation within the site from trenching. The Contractor confirmed that dust suppression mitigation measures were in effect at the time.

### 5.6 Compliance

#### 5.6.1 Incidents

Nil.

#### 5.6.2 Non-compliance

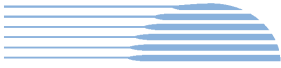
Nil.

#### 5.6.3 Audits

Nil.

### 5.7 Looking Forward – Core Focus Area

- Site work largely complete with final outages / connections on 18<sup>th</sup>-19<sup>th</sup> February 2026
- Next ER / AA Inspection to be undertaken during the outage in February 2026



## 6 PHASE L – ROSEHILL POWER ENABLING WORKS (STAGE 3)

The Sydney Metro West Stage 3 of the planning approval process (including tunnel fit-out, station building and fit-out, operation and maintenance) for Sydney Metro West, application number SSI-22765520, was approved on 25 January 2023.

Sydney Metro submitted the Sydney Metro West Stage 3 - Phasing Report (Rev 1.0) to the Planning Secretary in August 2025. The **Rosehill Power Enabling Works (Phase L)** works deemed early works, under the Stage 3 approval are required to ensure follow on contractors' access to site and risk removal associated with delays. **Phase L** is being delivered by Quickway Construction Pty Ltd with the contract being awarded in August 2025.

The Environmental Representatives for the Sydney Metro Stage 3 Package are:

- Swathi Gowda
- Jo Robertson
- Michael Woolley
- Maulik Bapodara

### 6.1 Key Construction Activities During the Period

Nil.

### 6.2 Key Construction Activities Look Ahead

- Durham Street Ancillary Facility set-up scheduled mid- late February 2026, at this stage
- Main construction activities are scheduled to commence mid- late February 2026, at this stage and pending final design/approvals.

### 6.3 ER Inspections

As no main construction works have occurred, no ER Inspections during the reporting period.

#### 6.3.1 Photos

Not applicable as there were no inspections.

### 6.4 Endorsed Document/s

Nil in reporting period.

### 6.5 Complaints

Nil.

### 6.6 Compliance

#### 6.6.1 Incidents

Nil.



HBI Healthy Buildings International Pty Ltd

**6.6.2 Non-compliance**

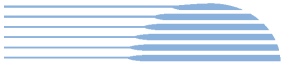
Nil.

**6.6.3 Audits**

Nil.

**6.7 Looking Forward – Core Focus Area**

- Ongoing review, comment and then endorsement of documents as required by the approved Phasing Report to enable Construction (for e.g. DNVIS).
- Durham Street Ancillary Facility set-up scheduled mid- late February 2026, at this stage.
- Construction commencement scheduled mid- late February 2026, at this stage and pending final design/ approvals.



## **7 SYDNEY METRO RETAINED OBLIGATIONS AND OTHER ACTIVITY**

The Environmental Representatives for the Sydney Metro Retained Obligations and other Activities are:

- Swathi Gowda
- Jo Robertson

The Sydney Metro Retained Obligations and other Activities, refers to any activities where responsibility for completion has been retained by Sydney Metro outside of the main work packages. These works typically do not require an EPL and are often low risk, exempt or administrative in nature.

### **7.1 Key Construction Activities During the Period**

The ER is not aware of other Sydney Metro managed construction activities during the period.

### **7.2 Key Construction Activities Look Ahead**

The ER is not aware of other Sydney Metro managed upcoming construction activities.

### **7.3 ER Inspections**

As there were no construction works, there were no ER Inspections during the reporting period.

#### **7.3.1 Photos**

Not applicable as there were no inspections.

### **7.4 Endorsed Document/s**

Nil.

### **7.5 Complaints**

No complaints have been reported to the ER during the reporting period.

### **7.6 Compliance**

#### **7.6.1 Incidents**

No incidents have been reported to the ER during the reporting period.

#### **7.6.2 Non-compliance**

No non compliances have been reported to the ER during the reporting period.

#### **7.6.3 Audits**

Independent Audits are reported (where relevant) in other sections of this Monthly Report.



## **8 STATEMENT OF LIMITATIONS**

Healthy Buildings International (HBI) has prepared this report in accordance with the requirements of:

- Condition A30(k) of the Sydney Metro West, Concept and Stage 1 SSI 10038 Approval (11 March 2021),
- Condition A32(k) of the Sydney Metro West – The Bays to Sydney CBD SSI 19238057 Approval (24 August 2022), and
- Condition A33 (k) of the Sydney Metro West – Rail Infrastructure, Stations, Precincts and Operations SSI 22765520 Approval (25 January 2023)

The report is for the sole purposes of Department of Planning, Housing and Infrastructure (DPHI) and Sydney Metro. It has been prepared based on generally accepted practices and standards at the time it was prepared. No other warranty, expressed or implied, is made as to the professional advice included in this Report. This report did not assess any aspects relating to safety.

Where the Report indicates that information has been provided to HBI by third parties, HBI assumes no liability for any inaccuracies in or omissions to that information.

This Report was prepared based on the conditions encountered and information reviewed at this time. HBI disclaims responsibility for any changes that may have occurred after this time.

This Report should be read in full. No responsibility is accepted for use of any part of this report in any other context or for any other purpose or by third parties. This Report does not purport to give legal advice. Legal advice can only be given by qualified legal practitioners.

Except as required by law, no third party may use or rely on this Report unless otherwise agreed by HBI in writing. Except as specifically stated in this section, HBI does not authorise the use or findings of this Report by any third party.

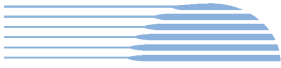
To the extent permitted by law, HBI expressly disclaims and excludes liability for any loss, damage, cost or expenses suffered by any third party relating to or resulting from the use of, or reliance on, any information contained in this Report. HBI does not admit that any action, liability or claim may exist or be available to any third party.



HBI Healthy Buildings International Pty Ltd

## **9 APPENDIX A – ER DOCUMENT ENDORSEMENT RECORDS (ETP ONLY)**

- Nil



HBI Healthy Buildings International Pty Ltd

## **10 APPENDIX B – ER DOCUMENT ENDORSEMENT RECORDS (STAGE 3 ONLY)**

Nil