

Mr Rob Sherry  
Team Leader Compliance – Government Projects  
Department of Planning, Housing and Infrastructure  
Locked Bag 5022  
PARRAMATTA NSW 2124

6 March 2026

Ref:201208-ER\_DPHI-February 2026

Dear Rob

**RE: Sydney Metro - Sydney Metro West SSI (Stage 1 and Stage 2) - ER Monthly Report for February 2026**

Healthy Buildings International (HBI) submits this report to the Secretary in accordance with:

- Condition A30 (k) of the Sydney Metro West, Concept and Stage 1 SSI 10038 Approval (11 March 2021), and associated modifications (MOD 1 - 28 July 2021, MOD 2 - 3 June 2022, MOD3 – 4 July 2022, MOD 4 - 23 December 2022, MOD 5 – 20 September 2023 and MOD 6 – 6 November 2024); and
- Condition A32(k) of the Sydney Metro West – The Bays to Sydney CBD SSI 19238057 Approval (24 August 2022) and associated modifications (MOD 1 – April 2023, MOD 2 – October 2023, and MOD 3 – November 2024) (known as Stage 2)

The attached summary details the key activities undertaken by Environmental Representatives for Sydney Metro – Sydney Metro West (Stage 1 and Stage 2) for the month of February 2026.

Yours sincerely

Swathi Gowda  
Environmental Representative – Metro West

Cc:

DPHI: Major Projects Portal

Sydney Metro: John Ieroklis, Maria Doumit, Andrew Hendy, Cath Snelgrove, Ari Stypel, Ryan Butler, Syed Shah, Valerie Lebon, Sara Yasipourtehrani

Contractors: Anne Anderson (AFJV), Steph Mifsud (GLC), Sally Reynolds (JCG)

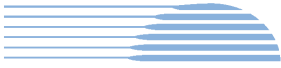


## Table of Contents

<b>1</b>	<b>PHASE B - CENTRAL TUNNELLING PACKAGE (STAGE 1)</b>	<b>4</b>
1.1	KEY CONSTRUCTION ACTIVITIES DURING THE PERIOD	4
1.2	KEY CONSTRUCTION ACTIVITIES LOOK AHEAD	5
1.3	ER INSPECTIONS	5
1.3.1	<i>Photos</i>	5
1.4	ENDORSED DOCUMENTS	6
1.5	COMPLAINTS	6
1.6	COMPLIANCE	6
1.6.1	<i>Incidents</i>	6
1.6.2	<i>Non-compliance and Potential Non Compliance</i>	7
1.6.3	<i>Audits</i>	7
1.7	LOOKING FORWARD	7
1.7.1	<i>Core Focus Areas</i>	7
1.7.2	<i>Closing Comments</i>	7
<b>2</b>	<b>PHASE F – WESTERN TUNNELLING PACKAGE (STAGE 1)</b>	<b>8</b>
2.1	KEY CONSTRUCTION ACTIVITIES DURING THE PERIOD	8
2.2	CONSTRUCTION ACTIVITIES LOOK AHEAD	9
2.3	ER INSPECTIONS	9
2.3.1	<i>Photos</i>	10
2.4	ENDORSED DOCUMENTS	12
2.5	COMPLAINTS	12
2.6	COMPLIANCE	12
2.6.1	<i>Incidents</i>	12
2.6.2	<i>Non-compliance</i>	13
2.6.3	<i>Audits</i>	13
2.7	LOOKING FORWARD – CORE FOCUS AREA	13
<b>3</b>	<b>PHASE G – EASTERN TUNNEL PACKAGE (STAGE 2)</b>	<b>14</b>
3.1	KEY CONSTRUCTION RELATED ACTIVITIES DURING THE PERIOD	14
3.2	KEY CONSTRUCTION ACTIVITIES LOOK AHEAD	15
3.3	ER INSPECTIONS	15
3.4	PHOTOS	16
3.5	ENDORSED DOCUMENT/S	17
3.6	COMPLAINTS	17
3.7	COMPLIANCE	18
3.7.1	<i>Incidents</i>	18
3.7.2	<i>Non-compliance</i>	18
3.7.3	<i>Audits</i>	18
3.8	LOOKING FORWARD – CORE FOCUS AREAS	18
<b>4</b>	<b>PHASE H2 – FIVE DOCK OVERHEAD TO UNDERGROUND RELOCATION WORKS (STAGE 1)</b>	<b>19</b>
4.1	KEY CONSTRUCTION ACTIVITIES DURING THE PERIOD	19
4.2	KEY CONSTRUCTION ACTIVITIES LOOK AHEAD	19
4.3	ER INSPECTIONS	19
4.3.1	<i>Photos</i>	19
4.4	ENDORSED DOCUMENT/S	19
4.5	COMPLAINTS	20
4.6	COMPLIANCE	20
4.6.1	<i>Incidents</i>	20
4.6.2	<i>Non-compliance</i>	20
4.6.3	<i>Audits</i>	20
4.7	LOOKING FORWARD – CORE FOCUS AREA	20



<b>5</b>	<b>PHASE J – NORTH STRATHFIELD POWER ENABLING WORKS (STAGE 1)</b>	<b>21</b>
5.1	KEY CONSTRUCTION ACTIVITIES DURING THE PERIOD	21
5.2	KEY CONSTRUCTION ACTIVITIES LOOK AHEAD	21
5.3	ER INSPECTIONS	21
5.3.1	<i>Photos</i>	22
5.4	ENDORSED DOCUMENT/S	22
5.5	COMPLAINTS	22
5.6	COMPLIANCE	22
5.6.1	<i>Incidents</i>	22
5.6.2	<i>Non-compliance</i>	22
5.6.3	<i>Audits</i>	23
5.7	LOOKING FORWARD – CORE FOCUS AREA	23
<b>6</b>	<b>SYDNEY METRO RETAINED OBLIGATIONS AND OTHER ACTIVITY</b>	<b>24</b>
<b>7</b>	<b>STATEMENT OF LIMITATIONS</b>	<b>25</b>
<b>8</b>	<b>APPENDIX A – ER DOCUMENT ENDORSEMENT RECORDS (ETP ONLY)</b>	<b>26</b>



## **1 PHASE B - CENTRAL TUNNELLING PACKAGE (STAGE 1)**

Phase B – Central Tunnelling Package (CTP) is being delivered by Acciona Ferrovia Joint Venture (AFJV). Phase B of Sydney Metro West has been further broken into:

- Phase B1: Civil works
- Phase B2: Tunnelling works

The AFJV hold EPL 21610 for this Phase of works. Activities defined as Phase B2-Tunneling Works in the Staging Report for Metro West commenced during the November 2022 reporting period at Burwood North. AFJV are now acting in a Transitional Handover Services capacity that comprises ongoing maintenance activities, minor rectification/defects work, and specific works as required of Sydney Metro.

The Environmental Representatives for Phase B of Sydney Metro West are:

- Michael Woolley
- Maulik Bapodara
- Swathi Gowda
- Jo Robertson

### **1.1 Key Construction Activities During the Period**

#### **The Bays**

- Operation of the water treatment plant and management/maintenance of areas handed over including the tunnels.
- Some areas of the station box in use by ETP for laydown.

#### **Five Dock**

- East and West Shaft sites: No AFJV site presence at the surface during inspections. Runoff water in the shafts is automatically pumped to the Bays for treatment.
- Cessation of the use of the house by AFJV or Sydney Metro at 21 Waterview Street adjacent the eastern shaft by Sydney Metro personnel.

#### **Burwood North**

- Deliveries and unloading of items to the surface.
- Re-commissioning of the Water Treatment Plant as part of preparations for handover.
- South Shaft: Limited or no works.

#### **North Strathfield**

- No works at the site which was locked up and no personnel on site permanently.
- Pumping of water from the station box to the Bays for treatment and discharge.

#### **Sydney Olympic Park**

- Tunnel maintenance with minor repairs/defect rectification ongoing.



- Use of a workshop and laydown of materials at the surface for tunnellers. Ongoing consolidation of stored equipment.
- Remaining site sheds are being used to accommodate the workforce. Delivery Office not in use.

AFJV continue to manage all sites (except much of the Bays which has been handed over to ETP Contractors).

### 1.2 Key Construction Activities Look Ahead

- Ongoing activities as described above.
- Minor defect rectification works ongoing in the tunnels.
- Ongoing operation of the water treatment plant at the Bays with water discharges ongoing.
- Ongoing re-commissioning of the water treatment plant at Burwood North.
- Ongoing management/maintenance/caretaking of sites with planned handover of sites on 31 March 2026.

### 1.3 ER Inspections

There were two ER inspections conducted during the reporting period on 12<sup>th</sup> and 26<sup>th</sup> February 2026, with each site being inspected once in the month. No actions were raised during the inspections.

#### 1.3.1 Photos



Figure 1.1 Station Box (The Bays) - Ongoing rectification and maintenance activities.



Figure 1.2 Ongoing operation of the water treatment plant at the Bays (The Bays).



Figure 1.3 Eastern Shaft – Hardstand areas free of dirt and debris at the East Shaft (Five Dock).



Figure 1.4 Western Shaft – no work was being undertaken at the surface or Station Box (Five Dock) during inspection.

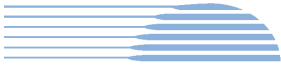


Figure 1.5 Water treatment plant recommissioned (Burwood North).



Figure 1.6 No visible activities occurring in the station box during site inspection (Burwood North).



Figure 1.7 No works observed in the station box at North Strathfield (NS).



Figure 1.8 Reduced materials at the surface (SOP).

#### 1.4 Endorsed Documents

No documents were approved or endorsed by the ER during the reporting period:

#### 1.5 Complaints

Based on Sydney Metro Complaint data issued for February 2026; there was one reported complaint that was investigated and found not to be related to AFJV/CTP activities.

#### 1.6 Compliance

##### 1.6.1 Incidents

No incidents as defined in the Infrastructure Approval were reported by AFJV during the reporting period.



### **1.6.2 Non-compliance and Potential Non Compliance**

No non compliances were raised by AFJV or Sydney Metro during the reporting period and none were observed by the ER.

### **1.6.3 Audits**

Nil in reporting period.

## **1.7 Looking Forward**

### **1.7.1 Core Focus Areas**

Ongoing management of sites during Transitional Handover Services.

### **1.7.2 Closing Comments**

The sites continue to be managed by the Transitional Services Contractor (AFJV). These sites will be handed over to the incoming Stations Package West and Linewide Contractors over the next few months as the West Stage 3 packages are established.



## **2 PHASE F – WESTERN TUNNELLING PACKAGE (STAGE 1)**

Phase F – Western Tunnelling Package (WTP) is being delivered by Gamuda Australia Laing O’Rourke Consortium (GLC).

GLC are constructing this Phase of Sydney metro West under EPL 21676.

The Environmental Representatives for Phase F of Sydney Metro West are:

- Swathi Gowda
- George Kollias
- Michael Woolley
- Maulik Bapodara
- Jo Robertson

### **2.1 Key Construction Activities During the Period**

During the reporting period, the following activities were being undertaken at Westmead, Parramatta and the Clyde stabling and maintenance facility which includes the Rosehill, Clyde Dive and Clyde MSF construction sites:

#### **Westmead**

- Cavern lining and other Form Reo Pour (FRP) works ongoing
- TBM 1 and TBM 2 demobilisation scope of works completed
- Preparatory works for staged shed demobilisation scheduled; with housekeeping and clean up commencement at pads 1 and 3

#### **Parramatta**

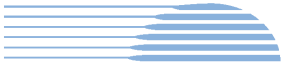
- Station Box:
  - Station Box Material Loadout
  - Tunnel Invert / Cross Passage Concrete pours (surface supply)
  - Tunnel Nozzles Secondary Lining & FRP (Eastern end of Station Box)
- Archaeology:
  - Zone 10 archaeological investigations and clearance work completed - backfill and reinstatement
  - Zone 6b archaeological investigations and clearance work completed
  - Demobilisation of GML offices and containers in preparation for new Zone 8D for archaeological investigations and clearance work commencement

#### **Rosehill**

- Continuing to strip the tunnels and remove redundant items
- Invert pours throughout the tunnel
- FRP and final fit out of remaining cross passages ongoing
- Water Treatment Plant operation including off-site discharge is ongoing
- Commencement of hotspot and tank removal (carpark area)

#### **Clyde Dive**

- Demobilisation of tunnel and lining supporting equipment ongoing
- Caverns FRP ongoing
- Bulk earth works across site ongoing
- Progressive chipseal of completed earthworks ongoing



- Installation of drainage and fencing ongoing
- Clyde Dive - Demobilisation of northern laydown commenced

### **Clyde MSF**

- Ongoing maintenance of landscaping areas as required
- Portion 12B backfilling of previous crib and site office area complete
- Long term stockpile commenced landscaping
- Flood Basin excavation (Stage 2)
  - South – PASS excavation and treatment
  - North – Hardstand removal and final ACM excavation

### **SOP**

- Handed over on 15 April 2025

## **2.2 Construction Activities Look Ahead**

The key construction activities planned are similar to those listed in Section 2.1, with the addition of the following:

- Various OOHW (conducted under EPL)
- Parramatta - Macquarie Lane diversion OOHW (March 2026)
- Westmead - Preparatory works for staged shed demobilisation (scheduled to commence ~ March 2026 onwards)

## **2.3 ER Inspections**

Currently, the sites are divided into two groups and visited typically fortnightly (weather permitting) for ER inspections. The two groups are:

- Parramatta and Westmead
- Clyde Dive, Clyde MSF and Rosehill

Four ER inspections were conducted during the reporting period, namely 04, 11, 18 and 25 February 2026; with opportunities for improvement (OFIs) identified and the following actions (summarised) raised during the month as follows:

### **Parramatta and Westmead**

- Action raised at Parramatta regarding one truck and dog observed on-site - to ensure that Project Identification Stickers are in place on rear of truck and dog, and where they are observed in place on sides of truck and dog, to be legible.
- Action raised to review/place chemicals with secondary containment at Westmead.
- Action raised regarding housekeeping (tidy up and removal of litter) required in Pad 3 at Westmead – noting commencement of demobilisation activities.

### **Clyde Dive, Clyde MSF and Rosehill**

- Action raised at Clyde Dive for maintenance required near low point (replacement/refreshing and tidy up of material build up) adjacent to Gate CD10 and housekeeping required in laydown area (some litter removal).
- Action raised to install signage for stockpile(s) at Clyde Dive, indicating waste classification/status.



- Action raised to review/place chemicals with secondary containment at Rosehill and Clyde Dive (demobilisation activities from Tunnels resulting in movement of chemicals). GLC indicated a site wide toolbox will be delivered as reminder regarding chemical storage.
- Action raised for maintenance required around established drain controls and within drain and weed maintenance at Portion 2 Rosehill and MSF BioBasin (for weeds).

GLC continue to be responsive to ER feedback during inspections and for the close out of the actions raised.

### 2.3.1 Photos



Figure 2.1- Parramatta: Western Station Box - hammering works underway within box, with water misting system observed.



Figure 2.2 – Parramatta: Western Station Box - hammering works underway; with water misting system observed at surface level.



Figure 2.3 – Parramatta: Hardstand areas wet down.



Figure 2.4 – Parramatta: Zone 10 - Macquarie Lane Section – Backfill and reinstatement.

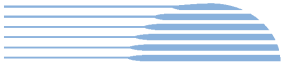


Figure 2.5 – Westmead (Surface level – Pad1): TBM demobilisation scope completed. Housekeeping /clean-up of Pad 1 commenced.



Figure 2.6 – Westmead (Surface level – Pad 3): Demobilisation / housekeeping commenced in preparation for shed demobilisation.



Figure 2.7 – Rosehill: Flood Basin Stage 2 works (no access).



Figure 2.8 – Rosehill: Mechanical and electrical workshops relocated and downsized.



Figure 2.9 – Clyde Dive: Dust suppression observed for scabbling activity.



Figure 2.10 – Clyde Dive: Bulk earthworks and culvert works (Zone 3).

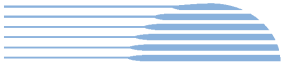


Figure 2.11 – Clyde Dive: Preparatory works underway for chipsealing surface (western section).



Figure 2.12 – Clyde MSF: BioBasin including surrounds (refer action section for weed maintenance).



Figure 2.13– Clyde MSF: Treated PASS stockpiled material push-out and placement ongoing including commencement of topsoil placement, in preparation for landscaping.

## 2.4 Endorsed Documents

No documents were approved or endorsed by the ER during the reporting period.

## 2.5 Complaints

Based on the Sydney Metro Complaint Register for February 2026, one complaint reported during the month, compared to five complaints in January 2026 (of these five complaints, three complaints were recorded as unrelated to SM activities).

The complaint about property damage in February 2026, was recorded in the Complaints Register, as unrelated to SM activities.

## 2.6 Compliance

### 2.6.1 Incidents

No incidents considered to represent Incidents as defined under the Infrastructure Approval were reported to or observed by the ER during the reporting period.



Three Class 3 incidents (related to spills/leaks) reported under GLC/SM reporting system during the reporting period.

### **2.6.2 Non-compliance**

No non-compliances were reported to the ER during the reporting period.

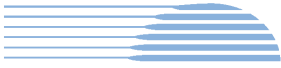
### **2.6.3 Audits**

An Independent Environmental Audit was undertaken on 24 and 25 February 2026.

## **2.7 Looking Forward – Core Focus Area**

The core focus areas for works (including upcoming works) are:

- Clyde Dive – Stabilisation activities (chipseal) following completed earthwork sections.
- Clyde Dive - Perimeter concrete barriers requiring James Ruse Drive (JRD) closure (dates TBC)
- Parramatta - Macquarie Lane diversion OOHW (March 2026)
- Westmead - Staged shed demobilisation (scheduled to commence ~ March 2026 onwards)
- Site demobilisation and handover activities of portions.



### 3 PHASE G – EASTERN TUNNEL PACKAGE (STAGE 2)

The Sydney Metro West Eastern Tunnel Package is Stage 2 of the Sydney Metro West CSSI and is described as major civil construction works between The Bays and Sydney CBD, including station excavation at Pyrmont and Hunter Street and tunnel excavation between the Bays and Hunter Street. Stage 2 (SSI 19238057) was approved on the 24 August 2022.

The Eastern Tunnelling Package (ETP) is being delivered by John Holland CPB Ghella Joint Venture (JCG) with the contract being awarded in November 2022. Sydney Metro notified DPHI that the date of commencement of construction was 17 March 2023. JCG have received Environmental Protection Licence (EPL 21784) for the project.

The Environmental Representatives for the Sydney Metro West Eastern Tunnel Package are:

- Michael Woolley
- Maulik Bapodara
- Swathi Gowda
- Jo Robertson

#### 3.1 Key Construction Related Activities During the Period

Works conducted during the reporting period included:

##### Hunter Street East:

- TBM Ruby retrieval activities including OOHs removal by the tower crane of large sections of the TBM for off-site removal.
- Removal of slab in Area 2 by rock hammer and management of contaminated fill. Subsequent commencement of excavation in the same area by rock hammers and excavators.
- Ongoing concrete deliveries and FRP activities for pours in the caverns and turnbacks. Use of air ventilation systems and other tunnelling support activities for works in the caverns. Assembly and disassembly of large formwork structures for the concrete pours.
- Use of the steel deck with access driveways to O'Connell Street and Hunter Street for concrete deliveries. Additional electric crane delivery and usage.
- Use of the crib sheds and offices over Richard Johnson Square.
- Operation of the water treatment plant under the steel deck and discharge of treated water to stormwater.

##### Hunter Street West:

- Ongoing bulk excavation of the shaft using multiple rock hammers, excavators and rock saws. Use of the steel deck for load out of spoil using kibble and truck loading frame.
- Wall support around the perimeter of the excavation with shotcrete and rock anchors.
- Ongoing installation of permanent rock anchors under Hunter Street.
- Ongoing deliveries and pedestrian management along Hunter Street.

##### Pyrmont East:

- Ongoing TBM support such as segment deliveries.
- Ongoing use of Union Street for concrete pumping activities in the ancillary facility within the closed street. Concrete pours were mostly during daytime periods with some pours extending into the evening and nighttime periods. The facility ceased being used during the period and was subsequently removed and Union Street handed back to the City of Sydney Council prior to the end of the reporting period.
- Ongoing FRP works for the station caverns.



- Ongoing use of the tunnel ventilation system.
- Use of site amenities/sheds on the steel deck to the east of the acoustic shed.

#### **Pyrmont West:**

- Ongoing FRP works for the service adits.
- Drainage of water to the tunnelling operations.

#### **The Bays:**

- Operation of the slurry plant. Some ongoing operational issues requiring clean-up of sediment from slurry spills on hardstand areas across the site observed. Ongoing works in cross passages to the east of Pyrmont.
- Demobilisation of infrastructure supporting TBM Ruby such as removal of slurry and other pipes.
- TBM tunnelling by TBM Jessie.
- Planning for demobilisation of the site.
- Saw cutting and rock hammering in the station box.
- Water treatment and discharge using the construction water treatment plant.
- General support activities such as in the workshops, segment delivery and storage and use of site offices.
- Use of the truck marshalling area by trucks waiting to load up and/or attend other project sites.
- Use of a staff car parking area on the former CTP spoil shed area.
- Ongoing excavation and construction of cross passages.

### **3.2 Key Construction Activities Look Ahead**

The below works are planned to occur in the following reporting period:

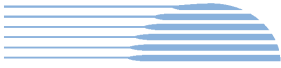
- Ongoing activities as described above.
- Retrieval of TBM components at Hunter Street East including use of the diesel Tower Crane during daytime and OOHs.
- Excavation of the shafts at the Hunter Street sites 7 days per week.
- Concrete pours at Hunter Street East through drop chutes on the steel deck including OOHs. Planning for set up of concrete pumps and deliveries to the steel deck at Hunter West.
- Ongoing construction of cross passages in the tunnel between Pyrmont and Hunter Street West.

### **3.3 ER Inspections**

Three ER inspections were conducted during the reporting period on Tuesday 3, 10 and 17 February 2026. The reduced number of inspections was due to the Independent Environmental Audit site inspection occurring in the last week of February. The following action was raised during the inspections:

- JCG to remove and appropriately dispose of accumulated oily water in the pallet bunds in the hydrocarbon storage area near the water treatment plant at the Bays.

JCG were responsive to ER feedback during inspections.



### 3.4 Photos

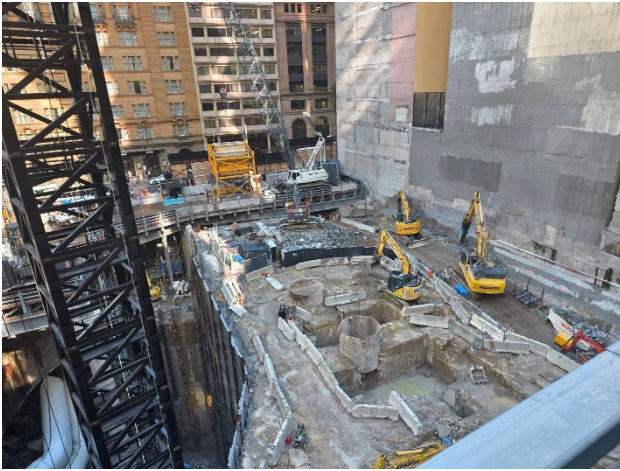


Figure 3.1 Hunter Street East: Excavation in Area 2.

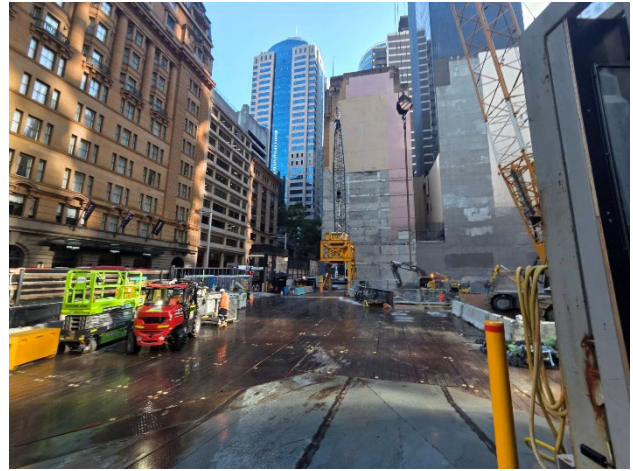


Figure 3.2 Hunter Street East: Works on the completed steel deck.

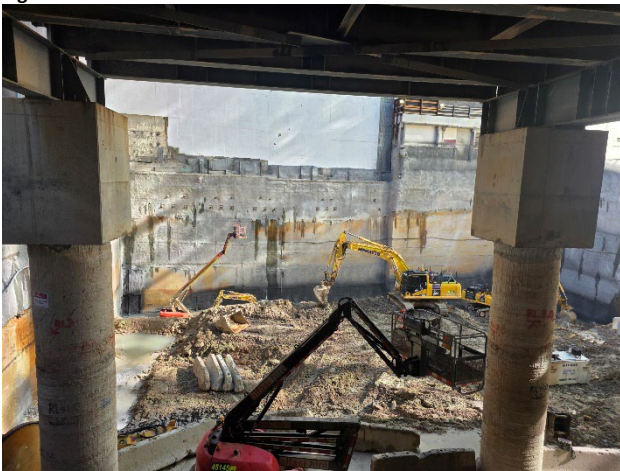


Figure 3.3 Hunter St West: Ongoing excavation of the shaft.

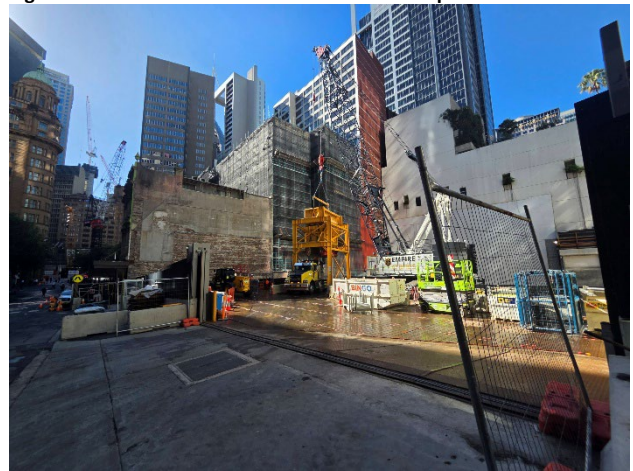


Figure 3.4 Hunter Street West: Works on the steel deck.



Figure 3.5 Pyrmont East: Concrete pumps removed from Union Street.

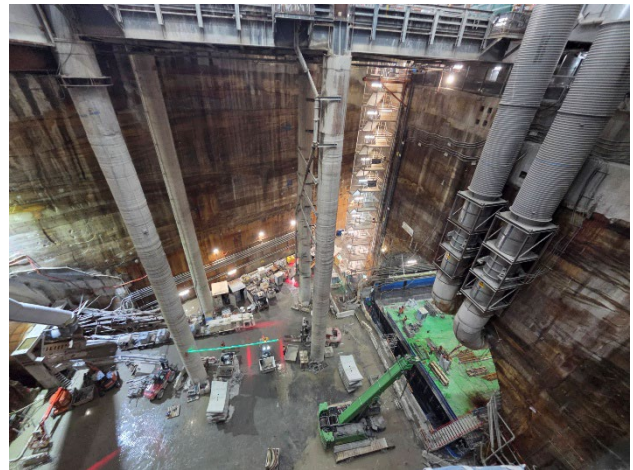


Figure 3.6 Pyrmont East: Work at the base of the shaft.

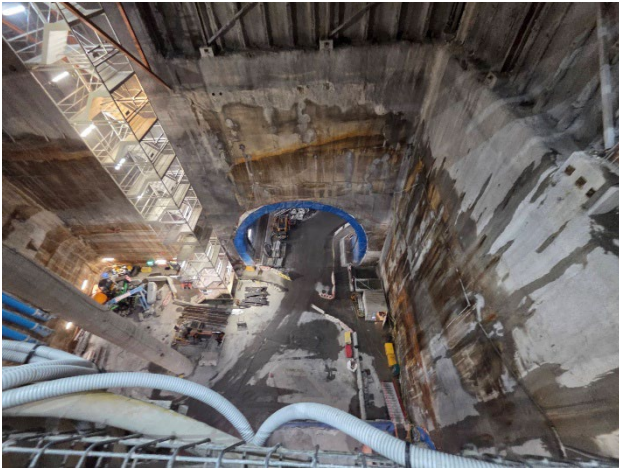
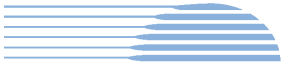


Figure 3.7 Pymont West: Ongoing FRP works for the adit linings.



Figure 3.8 The Bays: Ongoing works in the base of the Station Box.

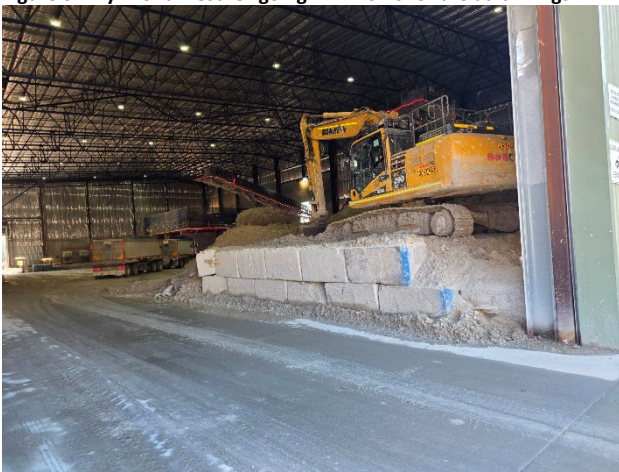


Figure 3.9 The Bays: Works inside the spoil shed.

### 3.5 Endorsed document/s

The following documents were signed, approved or endorsed during the reporting period.

- Application for Ancillary Facility – The Bays – Storage, Car Parking and Truck Marshalling (dated 10-2-26). The document was updated to reflect a later completion date.

### 3.6 Complaints

Based on the Monthly Complaints Register from Sydney Metro for February, there were eight complaints recorded during February 2026 compared to nineteen in January 2026. Two of the complaints were not related to JCG activities.

One complaint related to potential for noise and air emissions at Hunter Street Stakeholder following consultation in relation to proposed use of Ancillary Facility and upcoming after-hours concrete pours to support tunnel lining at Hunter Street West site.

Six complaints were reported for Pymont, of which 5 were related to OOHs noise and vibration. Two of these were found to be related to other utility works in the area not related to JCG works. Two complaints were for OOHs concrete works and one was for OOHs utility works. One complaint related to worker behaviour. The OOHs noise complaints at Pymont correlated with concrete pours being undertaken OOHs on Union Street. OOHs concrete pours at Union Street have now ceased.



One complaint was related to behaviour of a segment truck driver.

### **3.7 Compliance**

#### **3.7.1 Incidents**

No incidents were reported to DPHI under Condition A45 during the reporting period.

#### **3.7.2 Non-compliance**

No Non-Compliance reports (NCRs) were issued by JCG during the period.

#### **3.7.3 Audits**

The site visit for an Independent Environmental Audit was completed for ETP works during the last week of February.

### **3.8 Looking Forward – Core Focus Areas**

In the next reporting period, the ER will be focused on:

- General monitoring of construction activities
- Noise associated with excavation of the Hunter Street shafts
- Planned OOHWs at the Hunter Street sites



## **4 PHASE H2 – FIVE DOCK OVERHEAD TO UNDERGROUND RELOCATION WORKS (STAGE 1)**

With the ER endorsement and submission to the Planning Secretary of the Sydney Metro West Stage 1 Phasing Report Rev 2.0, the Phase H2 Five Dock Overhead to Underground Relocation Works commenced as a package of works. This package will be delivered by Quickway Constructions with the contract being awarded in July 2025. Construction commenced on 24th November 2025.

Phase H2 will involve the removal of two wooden power poles and the relocation of one wooden power pole. Electrical works on the Ausgrid network including underground relocation of five bays of overhead wiring outside of the Five Dock eastern construction site, along Second Avenue and Waterview Street, Five Dock. The scope of works will also involve installation of three pillars and four street light poles with service connections to nine private properties at Waterview Street and Second Avenue. The trenching works to install underground electrical services will occur within the roadway and footpaths of Waterview Street and Second Avenue. The excavation depth would be between 500mm to 1000mm below ground level and trenches would vary in width up to 950mm.

The ancillary facility at Silverwater used for Phase H1 will also be utilised for Phase H2 as a laydown area. A minor ancillary facility will be established at the Five Dock worksite for minor storage.

The Environmental Representatives for the Sydney Metro Stage 1 Phase H2 Package are:

- George Kollias
- Maulik Bapodara
- Jo Robertson

### **4.1 Key Construction Activities During the Period**

Works conducted during the reporting period included:

- Property connections to properties on Waterview St and Second Ave
- MAF demobilised and parking reinstated

### **4.2 Key Construction Activities Look Ahead**

Upcoming works include:

- Remaining pillars and property connections
- Minor works during daytime shifts to facilitate the outages planned
- Scheduled outage and cutover dates 3rd March and 10th March, includes OOH Works

### **4.3 ER Inspections**

Nil ER Inspections this period.

#### **4.3.1 Photos**

Nil photos this period.

### **4.4 Endorsed Document/s**

No ER endorsed documents for this period. Review of OOHW Permit 002 Rev 1 and Rev 2 undertaken, with sign-off outstanding.



#### **4.5 Complaints**

Nil complaints this period.

#### **4.6 Compliance**

##### **4.6.1 Incidents**

Nil incidents this period.

##### **4.6.2 Non-compliance**

Nil non-compliances this period.

##### **4.6.3 Audits**

Nil audits this period.

#### **4.7 Looking Forward – Core Focus Area**

Core focus areas for Five Dock Overhead to Underground Relocation Works include:

- Site work largely complete, awaiting final outages / connections on 3rd and 10th March 2026
- Next ER / AA Inspection to be undertaken during the OOH outage on 10th March 2026



## 5 PHASE J – NORTH STRATHFIELD POWER ENABLING WORKS (STAGE 1)

With the ER endorsement and submission to the Planning Secretary of the Sydney Metro West Stage 1 Phasing Report Rev 1.8, the Phase J North Strathfield Power Enabling Works commenced as a package of works. This package will be delivered by Syscon with the contract being awarded in August 2025. Construction commenced on 5th December 2025.

Phase J involves a small portion of electrical works that has been transferred from the Central Tunnelling Package (Phase B) to Phase J relating to the establishment of an electrical kiosk at North Strathfield to provide high voltage power to the site for follow-on contractors. The majority of the work to establish a high voltage power connection has been completed by the Phase B Principal Contractor and only requires modifications to the end connection points at the kiosk and the live mains. The Principal Contractor undertaking Phase J will be responsible for completing the design for this scope and conducting the remaining works.

The North Strathfield Power Enabling Works includes the following physical activities: investigations to establish locations of existing utilities; retrenching for low voltage (LV) works; and installation of electrical kiosk including internal reticulation and outage preparation works.

The Environmental Representatives for the Phase J package are:

- George Kollias
- Maulik Bapodara
- Jo Robertson

### 5.1 Key Construction Activities During the Period

Works conducted during the reporting period included:

- Cable terminations completed
- Hoarding re-configured around the Kiosk
- General site tidy up ongoing
- Enabling works completed during OOH on 13 & 15/02/26 – Open jointing pits, cover with road plate and temporary reinstatement with cold-mix asphalt
- OOH works for connections at Kiosk, corner of Queen St and Beronga St, and Waratah St during outage overnight 19/02/26

### 5.2 Key Construction Activities Look Ahead

Upcoming works include:

- Finalise onsite works including install of electricity meter
- Service and commission back-up generator
- Temporary feed to be disconnected and pole onsite to be removed

### 5.3 ER Inspections

One ER Inspection undertaken during the reporting period, on 19 February 2026, during OOH Works. No actions were raised. Temporary road plates removed and jointing pits opened. Observe cable jointing process. Hoarding re-configured around the Kiosk and mulch being placed to stabilise area. Discuss reinstatement of disturbed areas on roadside verges.

### 5.3.1 Photos

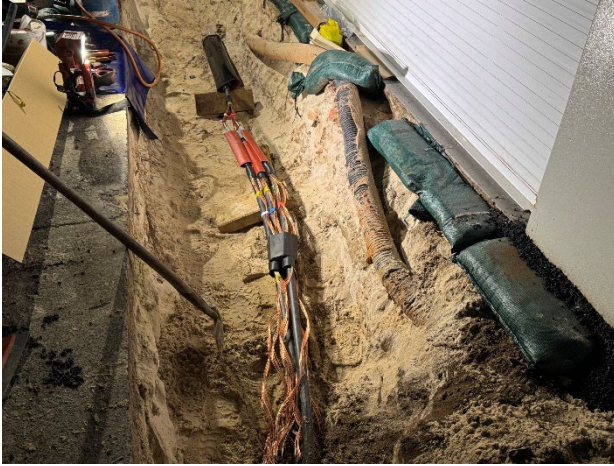


Figure 5.1 Expose cables and undertake cable jointing. Ausgrid onsite confirming outage and checking works.



Figure 5.2 Hoarding re-configured around the Kiosk, re-instating access to public verge as required by Ausgrid standards. Ground being prepared ahead of mulch placement around Kiosk.

### 5.4 Endorsed Document/s

ER endorsed documents for this period:

- OOHW Approval 1 Rev 6 – ER Approval 10/02/26

### 5.5 Complaints

The ER is not aware of any complaints receive during this period.

### 5.6 Compliance

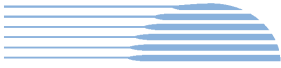
#### 5.6.1 Incidents

The ER is not aware of any incidents occurring during this period.

#### 5.6.2 Non-compliance

NC02: NC02: Inconsistency between the plant/equipment that was present on site on the evening of 23/01/26 with what was approved in the OOHW permit No.01 rev 5. OOHW Permit had omitted an activity from the DNVIS. Sydney Metro have reviewed whether any receivers were eligible for respite or alternative accommodation offers that did not receive them. It was confirmed that 21 receivers were offered respite. Upon review, some of these would have been eligible for alternate accommodation had the correct plant and equipment been identified. There were no complaints received because of the OOH works being carried out.

NC03: Recent OOH Works planned OOHW for 18th February brought forward to 13th & 15th February following an Ausgrid Inspection, allowing insufficient time for required 7 days' notice. On 5 February 2026, during a practical completion meeting, Ausgrid identified that existing cable lengths and joints may be insufficient for safe energisation of the kiosk to occur. Pre-outage enabling (investigation) works were originally scheduled for the evening prior to the outage occurring, that is the evening of Wednesday 18th February 2026. Ausgrid's direction meant that the dates needed to be brought forward to 13th & 15th February. Neither of these dates satisfy the requirement for the minimum seven (7) days notification period to receivers as specified in both the Sydney Metro West Overarching



Community Communications Strategy Rev 1.3 (a deliverable of SSI-10038 Condition B1) and the Sydney Metro West Out of Hours Protocol (a deliverable of SSI-10038 Condition D38(e)).

### **5.6.3 Audits**

No audits were scheduled to occur during this period.

### **5.7 Looking Forward – Core Focus Area**

- Site work is largely complete, with few activities remaining to be undertaken
- A final ER Inspection to be undertaken as part of final completion inspection, prior to handback to AFJV



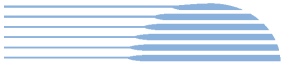
## **6 SYDNEY METRO RETAINED OBLIGATIONS AND OTHER ACTIVITY**

The Sydney Metro Retained Obligations and other Activities, refers to any activities where responsibility for completion has been retained by Sydney Metro outside of the main work packages. These works typically do not require an EPL and are often low risk, exempt or administrative in nature.

The Environmental Representatives for the Sydney Metro Retained Obligations and other Activities are:

- Swathi Gowda
- Jo Robertson

The ER is not aware of other Sydney Metro managed construction activities during the period.



## 7 STATEMENT OF LIMITATIONS

Healthy Buildings International (HBI) has prepared this report in accordance with the requirements of:

- Condition A30(k) of the Sydney Metro West, Concept and Stage 1 SSI 10038 Approval (11 March 2021), and
- Condition A32(k) of the Sydney Metro West – The Bays to Sydney CBD SSI 19238057 Approval (24 August 2022)

The report is for the sole purposes of Department of Planning, Housing and Infrastructure (DPHI) and Sydney Metro. It has been prepared based on generally accepted practices and standards at the time it was prepared. No other warranty, expressed or implied, is made as to the professional advice included in this Report. This report did not assess any aspects relating to safety.

Where the Report indicates that information has been provided to HBI by third parties, HBI assumes no liability for any inaccuracies in or omissions to that information.

This Report was prepared based on the conditions encountered and information reviewed at this time. HBI disclaims responsibility for any changes that may have occurred after this time.

This Report should be read in full. No responsibility is accepted for use of any part of this report in any other context or for any other purpose or by third parties. This Report does not purport to give legal advice. Legal advice can only be given by qualified legal practitioners.

Except as required by law, no third party may use or rely on this Report unless otherwise agreed by HBI in writing. Except as specifically stated in this section, HBI does not authorise the use or findings of this Report by any third party.

To the extent permitted by law, HBI expressly disclaims and excludes liability for any loss, damage, cost or expenses suffered by any third party relating to or resulting from the use of, or reliance on, any information contained in this Report. HBI does not admit that any action, liability or claim may exist or be available to any third party.



HBI Healthy Buildings International Pty Ltd

## **8 APPENDIX A – ER DOCUMENT ENDORSEMENT RECORDS (ETP ONLY)**

- Nil