

Mr Rob Sherry  
Team Leader Compliance – Government Projects  
Department of Planning, Housing and Infrastructure  
Locked Bag 5022  
PARRAMATTA NSW 2124

15 January 2026  
Ref:201208-ER\_DPHI-December 2025

Dear Rob

**RE: Sydney Metro - Sydney Metro West SSI - ER Monthly Report for December 2025**

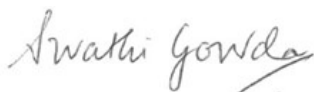
Healthy Buildings International (HBI) submits this report to the Secretary in accordance with:

- Condition A30 (k) of the Sydney Metro West, Concept and Stage 1 SSI 10038 Approval (11 March 2021), and associated modifications (MOD 1 - 28 July 2021, MOD 2 - 3 June 2022, MOD3 – 4 July 2022, MOD 4 - 23 December 2022, MOD 5 – 20 September 2023 and MOD 6 – 6 November 2024); and
- Condition A32(k) of the Sydney Metro West – The Bays to Sydney CBD SSI 19238057 Approval (24 August 2022) and associated modifications (MOD 1 – April 2023, MOD 2 – October 2023, and MOD 3 – November 2024)
- Condition A33 (k) of the Sydney Metro West – Rail Infrastructure, Stations, Precincts and Operations SSI 22765520 Approval (25 January 2023)

The attached summary details the key activities undertaken by Environmental Representatives for Sydney Metro – Sydney Metro West for the month of December 2025.

It should be noted that complaint details included for December 2025 within this Report are draft only at this stage, pending issue of a formal monthly complaints register from Sydney Metro and maybe subject to further finalisation in the next Monthly ER Report, where required.

Yours sincerely



Swathi Gowda  
Environmental Representative

Cc:

DPHI: Major Projects Portal

Sydney Metro: John Ieroklis, Maria Doumit, Andrew Hendy, Cath Snelgrove, Ari Stypel, Ryan Butler, Syed Shah, Valerie Lebon, Sarah Lepre

Contractors: Anne Anderson (AFJV), Steph Mifsud (GLC), Sally Reynolds (JCG)

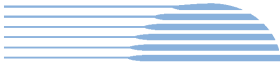


## Table of Contents

<b>1</b>	<b>PHASE B - CENTRAL TUNNELLING PACKAGE (STAGE 1)</b>	<b>4</b>
1.1	KEY CONSTRUCTION ACTIVITIES DURING THE PERIOD	4
1.2	KEY CONSTRUCTION ACTIVITIES LOOK AHEAD	5
1.3	ER INSPECTIONS	5
1.3.1	<i>Photos</i>	5
1.4	ENDORSED DOCUMENTS	7
1.5	COMPLAINTS	7
1.6	COMPLIANCE	7
1.6.1	<i>Incidents</i>	7
1.6.2	<i>Non-compliance and Potential Non Compliance</i>	7
1.6.3	<i>Audits</i>	7
1.7	LOOKING FORWARD – CORE FOCUS AREAS	7
<b>2</b>	<b>PHASE F – WESTERN TUNNELLING PACKAGE (STAGE 1)</b>	<b>8</b>
2.1	KEY CONSTRUCTION ACTIVITIES DURING THE PERIOD	8
2.2	CONSTRUCTION ACTIVITIES LOOK AHEAD	9
2.3	ER INSPECTIONS	9
2.3.1	<i>Photos</i>	10
2.4	ENDORSED DOCUMENTS	12
2.5	COMPLAINTS	12
2.5.1	<i>Incidents</i>	12
2.5.2	<i>Non-compliance</i>	12
2.5.3	<i>Audits</i>	12
2.6	LOOKING FORWARD – CORE FOCUS AREA	13
<b>3</b>	<b>PHASE G – EASTERN TUNNEL PACKAGE (STAGE 2)</b>	<b>14</b>
3.1	KEY CONSTRUCTION RELATED ACTIVITIES DURING THE PERIOD	14
3.2	KEY CONSTRUCTION ACTIVITIES LOOK AHEAD	15
3.3	ER INSPECTIONS	15
3.3.1	<i>Photos</i>	15
3.4	ENDORSED DOCUMENT/S	17
3.5	COMPLAINTS	17
3.6	COMPLIANCE	17
3.6.1	<i>Incidents</i>	17
3.6.2	<i>Non-compliance</i>	17
3.6.3	<i>Audits</i>	18
3.7	LOOKING FORWARD – CORE FOCUS AREAS	18
<b>4</b>	<b>PHASE H2 – FIVE DOCK OVERHEAD TO UNDERGROUND RELOCATION WORKS (STAGE 1)</b>	<b>19</b>
4.1	KEY CONSTRUCTION ACTIVITIES DURING THE PERIOD	19
4.2	KEY CONSTRUCTION ACTIVITIES LOOK AHEAD	19
4.3	ER INSPECTIONS	19
4.3.1	<i>Photos</i>	20
4.4	ENDORSED DOCUMENT/S	20
4.5	COMPLAINTS	20
4.6	COMPLIANCE	20
4.6.1	<i>Incidents</i>	20
4.6.2	<i>Non-compliance</i>	20
4.6.3	<i>Audits</i>	20
4.7	LOOKING FORWARD – CORE FOCUS AREA	20
<b>5</b>	<b>PHASE J – NORTH STRATHFIELD POWER ENABLING WORKS (STAGE 1)</b>	<b>21</b>
5.1	KEY CONSTRUCTION ACTIVITIES DURING THE PERIOD	21



5.2	KEY CONSTRUCTION ACTIVITIES LOOK AHEAD .....	21
5.3	ER INSPECTIONS .....	21
5.3.1	<i>Photos</i> .....	22
5.4	ENDORSED DOCUMENT/S.....	22
5.5	COMPLAINTS.....	22
5.6	COMPLIANCE .....	22
5.6.1	<i>Incidents</i> .....	22
5.6.2	<i>Non-compliance</i> .....	22
5.6.3	<i>Audits</i> .....	23
5.7	LOOKING FORWARD – CORE FOCUS AREA .....	23
<b>6</b>	<b>PHASE L – ROSEHILL POWER ENABLING WORKS (STAGE 3) .....</b>	<b>24</b>
6.1	KEY CONSTRUCTION ACTIVITIES DURING THE PERIOD.....	24
6.2	KEY CONSTRUCTION ACTIVITIES LOOK AHEAD .....	24
6.3	ER INSPECTIONS .....	24
6.3.1	<i>Photos</i> .....	24
6.4	ENDORSED DOCUMENT/S.....	24
6.5	COMPLAINTS.....	24
6.6	COMPLIANCE .....	25
6.6.1	<i>Incidents</i> .....	25
6.6.2	<i>Non-compliance</i> .....	25
6.6.3	<i>Audits</i> .....	25
6.7	LOOKING FORWARD – CORE FOCUS AREA .....	25
<b>7</b>	<b>SYDNEY METRO RETAINED OBLIGATIONS AND OTHER ACTIVITY .....</b>	<b>26</b>
7.1	KEY CONSTRUCTION ACTIVITIES DURING THE PERIOD.....	26
7.2	KEY CONSTRUCTION ACTIVITIES LOOK AHEAD .....	26
7.3	ER INSPECTIONS .....	26
7.3.1	<i>Photos</i> .....	26
7.4	ENDORSED DOCUMENT/S.....	26
7.5	COMPLAINTS.....	26
7.6	COMPLIANCE .....	26
7.6.1	<i>Incidents</i> .....	26
7.6.2	<i>Non-compliance</i> .....	26
7.6.3	<i>Audits</i> .....	26
<b>8</b>	<b>STATEMENT OF LIMITATIONS .....</b>	<b>27</b>
<b>9</b>	<b>APPENDIX A – ER DOCUMENT ENDORSEMENT RECORDS (ETP ONLY) .....</b>	<b>28</b>
<b>10</b>	<b>APPENDIX B – ER DOCUMENT ENDORSEMENT RECORDS (STAGE 3 ONLY) .....</b>	<b>29</b>



## **1 PHASE B - CENTRAL TUNNELLING PACKAGE (STAGE 1)**

The Environmental Representatives for Phase B of Sydney Metro West are:

- Michael Woolley
- Maulik Bapodara
- Swathi Gowda
- Jo Robertson

Phase B – Central Tunnelling Package (CTP) is being delivered by Acciona Ferrovia Joint Venture (AFJV). Phase B of Sydney Metro West has been further broken into:

- Phase B1: Civil works
- Phase B2: Tunnelling works

The AFJV hold EPL 21610 for this Phase of works. Activities defined as Phase B2-Tunneling Works in the Staging Report for Metro West commenced during the November 2022 reporting period at Burwood North. Substantial Construction has been achieved under the CTP contract for the remaining sites. AFJV are now acting in a Transitional Handover Services capacity that comprises ongoing maintenance activities, minor rectification/defects works, and specific works as required of Sydney Metro.

### **1.1 Key Construction Activities During the Period**

#### **The Bays**

- Operation of the water treatment plant and management/maintenance of areas handed over including the tunnels.
- Some areas of the station box were in use by ETP for laydown.

#### **Five Dock**

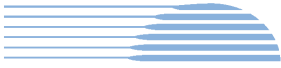
- East and West Shaft sites: No site presence at the surface during inspections. Runoff water in the shafts is automatically pumped to the Bays for treatment.
- Use of house ongoing at 21 Waterview Street adjacent the eastern shaft by Sydney Metro personnel.

#### **Burwood North**

- Deliveries and unloading of items to the surface.
- Water treatment plant not operating – general maintenance activities only.
- South Shaft: Limited or no works.

#### **North Strathfield**

- No works at the site which was locked up and no personnel on site permanently.
- Pumping of water from the station box to the Bays for treatment and discharge.
- OOHWS to repair a small section of banner mesh at North Strathfield.
- Handover of the western end hardstand to utilities contractor.



## Sydney Olympic Park

- Tunnel maintenance with minor repairs/defect rectification ongoing.
- Use of a workshop and laydown of materials at the surface for tunnellers. Ongoing consolidation of stored equipment.
- Remaining site sheds are being used to accommodate the remaining workforce and remaining people from the Project Delivery Office which has been vacated.

AFJV continue to manage all sites (except much of the Bays which has been handed over to ETP Contractors).

### 1.2 Key Construction Activities Look Ahead

- Ongoing activities as described above.
- Some defect rectification works ongoing in the tunnels.
- Ongoing operation of the water treatment plant at the Bays with water discharges ongoing.
- Ongoing maintenance of the water treatment plant at Burwood North.
- Ongoing management/maintenance/caretaking of sites.

### 1.3 ER Inspections

There were two ER inspections conducted during the reporting period on 3<sup>rd</sup> and 18<sup>th</sup> December 2025, with each site being inspected once in the month. No actions were raised during the inspections.

#### 1.3.1 Photos



Figure 1.1 Station Box (The Bays) - Ongoing maintenance activities.



Figure 1.2 Ongoing operation of the water treatment plant at the Bays (The Bays).

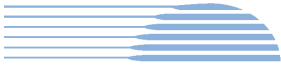


Figure 1.3 Eastern Shaft – No activities sighted. Automatic water management system operating at the base of the East Shaft (Five Dock).



Figure 1.4 Western Shaft – no apparent works at the surface (Five Dock).



Figure 1.5 Surface hardstand areas (Burwood North).



Figure 1.6 No visible activities occurring in the station box (Burwood North).



Figure 1.7 No works observed in the station box at North Strathfield (NS).



Figure 1.8 Ongoing use of workshop at the surface (SOP).



HBI Healthy Buildings International Pty Ltd

#### **1.4 Endorsed Documents**

Nil

#### **1.5 Complaints**

Based on (draft) Sydney Metro Complaint data issued during December 2025, there were no complaints reported that related to AFJV/CTP activities.

#### **1.6 Compliance**

##### **1.6.1 Incidents**

No incidents as defined in the Infrastructure Approval were reported by AFJV during the reporting period.

##### **1.6.2 Non-compliance and Potential Non Compliance**

No non compliances were raised by AFJV or Sydney Metro during the reporting period and none were observed by the ER.

##### **1.6.3 Audits**

Nil in reporting period.

#### **1.7 Looking Forward – Core Focus Areas**

- Ongoing management of sites during Transitional Handover Services.



## 2 PHASE F – WESTERN TUNNELLING PACKAGE (STAGE 1)

The Environmental Representatives for Phase F of Sydney Metro West are:

- Swathi Gowda
- George Kollias
- Michael Woolley
- Maulik Bapodara
- Jo Robertson

Phase F – Western Tunnelling Package (WTP) is being delivered by Gamuda Australia Laing O’Rourke Consortium (GLC).

GLC are constructing this Phase of Sydney metro West under EPL 21676.

### 2.1 Key Construction Activities During the Period

During the reporting period, the following activities were being undertaken at Westmead, Parramatta and the Clyde stabling and maintenance facility which includes the Rosehill, Clyde Dive and Clyde MSF construction sites:

#### Westmead

- Cavern lining and other Form Reo Pour (FRP) works ongoing
- TBM 1 and TBM 2 operations - traverse and dismantle ongoing

#### Parramatta

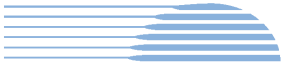
- Station Box:
  - Station Box material loadout
  - Tunnel Invert / Cross Passage concrete pours
  - Tunnel Nozzles secondary lining and FRP works (Eastern end of Station Box)
- Archaeology:
  - Zone 10 archaeological investigations and clearance works continuing
- Sewer relining works completed for 2025; with some work required in January 2026 (Date TBC)

#### Rosehill

- Continuing to strip the tunnels and remove redundant items from tunnels
- Cross passage works - XP86, XP88 and XP89
- Water Treatment Plant operation including off-site discharge is ongoing
- Removal of conveyor infrastructure and tunnel support equipment ongoing
- Substantial Completion of Portion 2 finalised and handover occurred on 9 December 2025

#### Clyde Dive

- Demobilisation of tunnel and lining supporting equipment ongoing
- Caverns FRP ongoing
- Bulk earth works ongoing and removal of concrete hardstand
- Installation of drainage and fencing
- Clyde dive portal FRP works ongoing
- Previous site sheds demobilised



### **Clyde MSF**

- Ongoing maintenance of landscaping areas as required
- Portion 12B backfilling of previous crib and site office area ongoing
- Realignment of discharge line on access track (above ground) complete

### **SOP**

- Handed over on 15 April 2025

## **2.2 Construction Activities Look Ahead**

The key construction activities planned are similar to those listed in Section 2.1, with the addition of the following:

- Various OOHW (conducted under EPL)
- Preparations for Stage 2 of Flood Basin excavation (Rosehill)
- Preparations for Christmas Shutdown period (for sites scheduled to be shutdown)

## **2.3 ER Inspections**

Currently, the sites are divided into two groups and visited typically fortnightly (weather permitting) for ER inspections. The two groups are:

- Parramatta and Westmead
- Clyde Dive, Clyde MSF and Rosehill

Three ER inspections were conducted during the reporting period - 03, 10 and 17 December 2025; with opportunities for improvement (OFIs) identified and the following action(s) (summarised) raised during the month as follows:

### **Westmead and Clyde MSF**

- Nil

### **Rosehill**

- Action raised for maintenance required (removal of material build-up) around drains with controls, in Portion 2 Area.

### **Parramatta**

- Action raised for some maintenance required (removal of sediment/dirt build up) in gutter, around ERSED controls near Gate 2 and around ERSED controls within site near Gate 1.

### **Clyde Dive**

- Action raised for weed management on stockpile located on southern end of the Clyde Dive site.



### 2.3.1 Photos



Figure 2.1- Parramatta Western Station Box: Hammering within box on Western end.



Figure 2.2 - Parramatta Western Station Box: Misters in operation for dust suppression on Western end.



Figure 2.3 – Parramatta: Eastern Station Box



Figure 2.4 – Parramatta: Archaeological investigation and clearance works - Zone 10.



Figure 2.5 – Westmead: Cranage works - Surface Level.



Figure 2.6 – Westmead: TBM cutter heads lifted to surface.

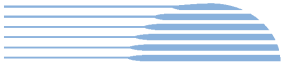


Figure 2.7 – Clyde MSF (West) – Grass take observed in previously hydromulched area.



Figure 2.8 – Clyde MSF (West) – Application of soil binder on embankments commenced in preparation for Christmas shutdown.



Figure 2.9 – Clyde MSF (West): Backfilling of previous crib and site office area ongoing.



Figure 2.10 –Clyde MSF (West): Application of soil binder on exposed surfaces in preparation for Christmas shutdown.



Figure 2.11 - Rosehill: Chipseal of section of Portion 2 completed.



Figure 2.12 - Rosehill: Concrete removal for Flood Basin Stage 2 works commenced.

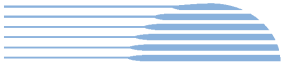


Figure 2.13– Clyde Dive: Earthworks in Zone 3 continuing.



Figure 2.14 – Clyde Dive: Fencing works along section of eastern boundary.

## 2.4 Endorsed Documents

The following documents were approved or endorsed by the ER during the reporting period:

- Nil

## 2.5 Complaints

Based on the (draft) Sydney Metro Complaint Register for December 2025, one complaint reported during the month, compared to two complaints in November 2025. Complaints recorded in December 2025 are summarised below:

### Westmead

- One complaint related to noise (OOHW)

#### 2.5.1 Incidents

No incidents considered to represent Incidents as defined under the Infrastructure Approval were reported to or observed by the ER during the reporting period.

Three Class 3 incidents (related to spills) reported under GLC/SM reporting system during the reporting period.

#### 2.5.2 Non-compliance

Nil non-compliances reported to the ER during the reporting period.

#### 2.5.3 Audits

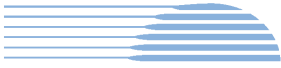
Nil during the reporting period.



## **2.6 Looking Forward – Core Focus Area**

The core focus areas for works (including upcoming works) are:

- Westmead - TBM retrieval works at Westmead (proposed OOHW in January 2026)
- Clyde Dive - Bulk earth works, removal of concrete hardstand areas and fencing continuing



### 3 PHASE G – EASTERN TUNNEL PACKAGE (STAGE 2)

The Sydney Metro West Eastern Tunnel Package is Stage 2 of the Sydney Metro West CSSI and is described as major civil construction works between The Bays and Sydney CBD, including station excavation at Pyrmont and Hunter Street and tunnel excavation between the Bays and Hunter Street. Stage 2 (SSI 19238057) was approved on the 24 August 2022.

The Environmental Representatives for the Sydney Metro West Eastern Tunnel Package are:

- Michael Woolley
- Maulik Bapodara
- Swathi Gowda
- Jo Robertson

The Eastern Tunnelling Package (ETP) is being delivered by John Holland CPB Ghella Joint Venture (JCG) with the contract being awarded in November 2022. Sydney Metro notified DPHI that the date of commencement of construction was 17 March 2023. JCG have received Environmental Protection Licence (EPL 21784) for the project.

#### 3.1 Key Construction Related Activities During the Period

Works conducted during the reporting period included:

##### Hunter Street East:

- TBM Ruby breakthrough into the Station Cavern. Assembly of diesel Tower Crane to allow retrieval of the TBMs. Assembly of air ventilation systems in the Stage 1 excavation.
- Wall support works along the site boundary with O'Connell Street including rock anchor drilling and installation and FRP works completed. King Pile FRP for the pile cap.
- Recommencement of excavation behind the retaining wall in the NW corner of the site.
- Ongoing concrete deliveries and FRP activities for pours in the caverns. Use of air ventilation systems and other tunnelling support activities for works in the caverns.
- Use of the steel deck with access driveways to O'Connell Street and Hunter Street for load out of spoil using kibble and unloading frame.
- Use of the crib sheds and offices over Richard Johnson Square.
- Operation of the water treatment plant under the steel deck and discharge of treated water to stormwater.

##### Hunter Street West:

- Bulk excavation of the shaft using multiple rock hammers, excavators and rock saws. Use of the steel deck for load out of spoil using kibble and truck loading frame.
- Wall support around the perimeter of the excavation with shotcrete and rock anchors.
- Ongoing installation of permanent rock anchors under Hunter Street.
- Ongoing deliveries and pedestrian management along Hunter Street.

##### Pyrmont East:

- Ongoing TBM support such as segment deliveries.
- Ongoing use of Union Street for concrete pumping activities in the ancillary facility within the closed street. Concrete pours were during daytime periods with clean-up activities occurring into the evening for the longer pours. These works are likely to extend into the evening and night periods in January 2026 for some pours.
- Ongoing FRP works for the invert in the cross over and station caverns.
- Ongoing use of the tunnel ventilation system.
- Use of site amenities/sheds on the steel deck to the east of the acoustic shed.

##### Pyrmont West:

- Ongoing FRP works for the service adits.
- Drainage of water to the tunnelling operations.



### The Bays:

- TBM Ruby breakthrough at Hunter Street. Operation of the slurry plant. Some operational issues requiring clean-up of sediment on hardstand areas across the site. Ongoing works in cross passages to the east of Pymont.
- Installation of temporary services in the station box involving saw cutting and rock hammering.
- Water treatment and discharge using the construction water treatment plant.
- General support activities such as in the workshops, segment delivery and storage and use of site offices.
- Use of the truck marshalling area by trucks waiting to load up and/or attend other project sites.
- Use of a staff car parking area on the former CTP spoil shed area.

### 3.2 Key Construction Activities Look Ahead

The below works are planned to occur in the following reporting period:

- Ongoing activities as described above.
- Completion of TBM tunnelling by TBM Jessie at Hunter Street.
- Retrieval of TBM components at Hunter Street East including use of the diesel Tower Crane during daytime and OOHs.
- Excavation of the shafts at the Hunter Street sites 7 days per week including removal of the concrete slab at Hunter Street East.
- Concrete pours at Hunter Street East through drop chutes on the steel deck including OOHs.
- Ongoing construction of cross passages in the tunnel between Pymont and Hunter Street West.

### 3.3 ER Inspections

Three ER inspections were conducted during the reporting period on each Tuesday in December up to the project closure period commencing on 20<sup>th</sup> December. The following actions were raised during the inspections:

- JCG to remove chemicals and hydrocarbons from the Truck Marshalling area at the Bays.

JCG were responsive to ER feedback during inspections and for the close out of the actions raised.

#### 3.3.1 Photos

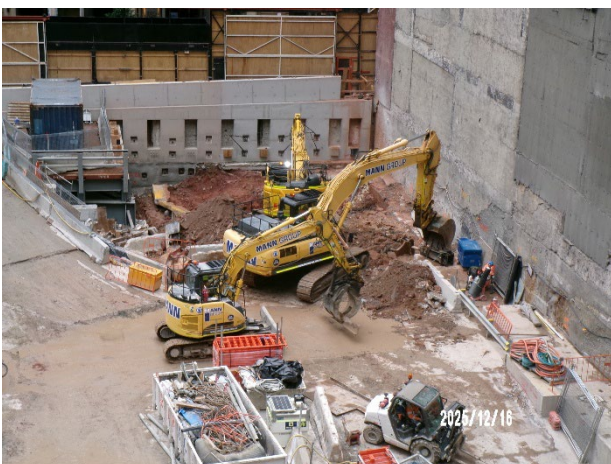


Figure 3.1 Hunter Street East: Location of strip footing adjacent 16 O'Connell Street.



Figure 3.2 Hunter Street East: Installation of tower crane for TBM retrieval.

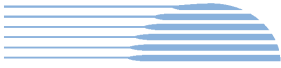


Figure 3.3 Hunter St West: Ongoing excavation of the shaft. Anchor installation under Hunter Street.



Figure 3.4 Hunter Street West: Ongoing excavation of the shaft.



Figure 3.5 Pymont East: Concrete pumps in Union Street.



Figure 3.6 Pymont East: TBM support activities.



Figure 3.7 Pymont West: Service adit FRP works.

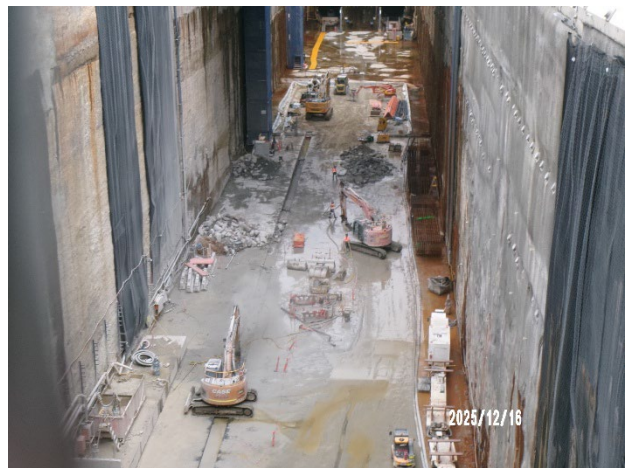


Figure 3.8 The Bays: Installation of temporary services in trenches in the Station Box.



Figure 3.9 The Bays: Truck marshalling area.

### 3.4 Endorsed document/s

The following documents were signed, approved or endorsed during the reporting period.

- Nil

### 3.5 Complaints

In December 2025, Sydney Metro's provided an interim monthly complaint register which recorded four complaints. This was a decrease from the fifteen complaints reported in November 2025.

One complaint related to noise from truck movements via Union Street, Pyrmont. One complaint related to temporary footpath closure on O'Connell Street during tower crane installation work at Hunter Street East site.

One complaint at Pyrmont West related to air quality and odour. One complaint related to a truck allegedly parking illegally at a service station and worker behaviour, and following investigation by JCG was deemed not related to the project activities.

### 3.6 Compliance

#### 3.6.1 Incidents

No incidents were reported to DPHI under Condition A45 during the reporting period.

JCG completed further investigation and remedial works related to the incident of property damage in the previous reporting period. Excavation has re-commenced adjacent 16 O'Connell Street after works were completed within the building.

#### 3.6.2 Non-compliance

Two Non-Compliance reports (NCRs) were issued by JCG during the period related to a small number of trucks going outside of approved haulage routes during the previous two reporting periods of October and November 2025 (Condition D77). It is understood NCRs relating to trucks deviating from approved haulage routes is to be reported monthly to DPHI. JCG reported in the NCRs that *"During the reporting period 1 October 2025 to 31 October 2025, a total of 5 haulage route events were recorded from a total of 4,629 haulage vehicle movements being a rate of 0.11%."* and *"During the reporting period 1 November 2025 to 30 November 2025 a total of 4 haulage route events were recorded from a total of 3,925 haulage vehicle movements being a rate of 0.10%."*



HBI Healthy Buildings International Pty Ltd

### **3.6.3 Audits**

Nil during the reporting period.

### **3.7 Looking Forward – Core Focus Areas**

In the next reporting period, the ER will be focused on:

- General monitoring of construction activities
- Noise associated with excavation of the Hunter Street shafts
- Review of planned OOHs at Pyrmont and Hunter Street sites



## 4 PHASE H2 – FIVE DOCK OVERHEAD TO UNDERGROUND RELOCATION WORKS (STAGE 1)

With the ER endorsement and submission to the Planning Secretary of the Sydney Metro West Stage 1 Phasing Report Rev 2.0, the **Phase H2 Five Dock Overhead to Underground Relocation Works** commenced as a package of works. This package will be delivered by Quickway Constructions with the contract being awarded in July 2025. Construction commenced on 24<sup>th</sup> November 2025.

Phase H2 will involve the removal of two wooden power poles and the relocation of one wooden power pole. Electrical works on the Ausgrid network including underground relocation of five bays of overhead wiring outside of the Five Dock eastern construction site, along Second Avenue and Waterview Street, Five Dock. The scope of works will also involve installation of three pillars and four street light poles with service connections to nine private properties at Waterview Street and Second Avenue. The trenching works to install underground electrical services will occur within the roadway and footpaths of Waterview Street and Second Avenue. The excavation depth would be between 500mm to 1000mm below ground level and trenches would vary in width up to 950mm.

The ancillary facility at Silverwater used for Phase H1 will also be utilised for Phase H2 as a laydown area. A minor ancillary facility will be established at the Five Dock worksite for minor storage.

The Environmental Representatives for the Sydney Metro Stage 1 Phase H2 Package are:

- George Kollias
- Maulik Bapodara
- Jo Robertson

### 4.1 Key Construction Activities During the Period

Construction commenced on 24<sup>th</sup> November 2025. Works undertaken since the commencement of construction include:

- Trench and lay conduits across the Eastern Station Box (AFJV) Driveway on Second Ave
- Continue trenching around the corner on Waterview St
- Trenching undertaken across Waterview St at depth to clear watermain (minor rock hammering)
- Minor Ancillary Facility (MAF) installed on Second Ave on Monday 1<sup>st</sup> December 2025

### 4.2 Key Construction Activities Look Ahead

Upcoming works include:

- Cabling works
- Driveway restorations
- Cutover works being planned for March 2026, anticipating 2-nights OOHW

### 4.3 ER Inspections

One ER Inspection undertaken during the reporting period, on 2<sup>nd</sup> December 2025. No actions were raised. Discussions had regarding spoil segregation, SSI stickers on rear and sides of the spoil truck, having undertaken the Second Ave road crossing without the need for rock hammering and the provision of the Pre-construction Condition Survey Report to the owner of 2 Second Ave.



#### 4.3.1 Photos



Figure 4.1 Road crossing outside 2 Second Ave was completed without the need for rock hammering. Trench backfill and temporary restoration with hotmix across the front of 2 Second Ave.



Figure 4.2 Spoil excavated and straight onto truck, without stockpiling onsite. No spoil stockpiling to occur at Second Ave MAF.

#### 4.4 Endorsed Document/s

No ER endorsed documents for this period.

#### 4.5 Complaints

Nil complaints received and responded to by the Project this period.

#### 4.6 Compliance

##### 4.6.1 Incidents

Nil.

##### 4.6.2 Non-compliance

Nil.

##### 4.6.3 Audits

Nil.

#### 4.7 Looking Forward – Core Focus Area

Core focus areas for Five Dock Overhead to Underground Relocation Works include:

- The ongoing trenching and laying of conduits, followed by driveway restorations
- OOHW Cutover works in March 2026



## 5 PHASE J – NORTH STRATHFIELD POWER ENABLING WORKS (STAGE 1)

With the ER endorsement and submission to the Planning Secretary of the Sydney Metro West Stage 1 Phasing Report Rev 1.8, the **Phase J North Strathfield Power Enabling Works** commenced as a package of works. This package will be delivered by Syscon with the contract being awarded in August 2025. Construction commenced on 5<sup>th</sup> December 2025.

Phase J will involve a small portion of electrical works that has been transferred from the Central Tunnelling Package (Phase B) to Phase J relating to the establishment of an electrical kiosk at North Strathfield to provide high voltage power to the site for follow-on contractors. The Principal Contractor undertaking Phase J will be responsible for completing the design for this scope and conducting the remaining works.

The majority of the work to establish a high voltage power connection has been completed by the Phase B Principal Contractor and only requires modifications to the end connection points at the kiosk and the live mains. The North Strathfield Power Enabling Works includes the following physical activities: investigations to establish locations of existing utilities; retrenching for low voltage (LV) works; and installation of electrical kiosk including internal reticulation and outage preparation works.

The Environmental Representatives for the Sydney Metro Stage 1 Phase J Package are:

- George Kollias
- Maulik Bapodara
- Jo Robertson

### 5.1 Key Construction Activities During the Period

Construction commenced on 5<sup>th</sup> December 2025. Works undertaken since the commencement of construction include:

- Service locating works around the project
- Opened easement area and exposed Sydney Trains cables
- Strip footing poured and hoarding modification undertaken
- Installed piers for substation
- Earthing installation and testing
- Joint Bay excavations, testing and backfill
- Excavation and installation of LV conduits outside site compound hoarding
- Excavation and installation of LV conduits in Queen St

### 5.2 Key Construction Activities Look Ahead

Upcoming works include:

- LV Cable installation & backfill
- Up-Pole installation
- Onsite excavation and laying conduits

### 5.3 ER Inspections

One ER Inspection undertaken during the reporting period, on 8<sup>th</sup> December 2025. Two actions were raised. One noting the Non-compliance identified by Sydney Metro (as below). The second being, to review Project Signage at the site gate with Sydney Metro, to be consistent with CoA A48 (SSI-number, postal details and email address). Discussions had regarding Alternate Accommodation offered for OOH works, undertaking works without the need for high-noise activities, use of battery powered equipment and pedestrian diversions.



### 5.3.1 Photos



Figure 5.1 Worksite established on Waratah St, outside Focus Care building. Businesses (Focus Care and C3 Education) not operating during the works. Alternate Accommodation provided to residents.



Figure 5.2 Hoarding modification undertaken 6th December across the front of the electrical kiosk location, offering a noise barrier for most of the upcoming works associated with siting the kiosk.

### 5.4 Endorsed Document/s

ER endorsed documents for this period:

- OOHW Approval 1 Rev 3 – ER Approval 01/12/25
- OOHW Approval 1 Rev 4 – ER Approval 19/12/25

### 5.5 Complaints

Complaint regarding footpath restorations received 17/12/25. A complaint was received from FocusCare, regarding the quality of the temporary restoration of the footpath at the entrance of the business. The business stated that the temporary asphalt was uneven and poses a safety risk to her clients who have disabilities including those in wheelchairs. The pavement was repaired by the Contractor to close the complaint.

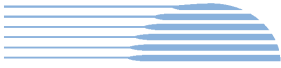
### 5.6 Compliance

#### 5.6.1 Incidents

Nil.

#### 5.6.2 Non-compliance

NC01 Unapproved OOHW reported 12/12/25 (CoA D37(c)(ii), A45, A46) - Various construction activities (cutting and breaking of concrete using a concrete saw and use of excavator) were undertaken at North Strathfield during the unapproved daytime Out of Hours period between 8.30am and 2pm on Sunday, 7 December 2025. These works were originally approved to be undertaken during the evening/night OOHW period on Sunday, 7 December 2025. Details of this activity being undertaken during the daytime period were not proposed or approved in the OOHW approval form, approved by Sydney Metro/AA/ER on 1 December 2025. Due to good progress made on Saturday 6 December, the Syscon construction team had the best intentions in their decision to bring forward the construction activities that were originally scheduled and approved to be undertaken on the evening/night of Sunday 7 December (rescheduling the evening/night works to the daytime period to avoid potential sleep disturbance impacts to nearby receivers). This



non-compliance was a one-off event in that the entire shift (8.30am – 2pm) was non-compliant. All works were completed within the North Strathfield site compound (within the site boundary) behind the existing hoarding. As a result, there were no traffic impacts and pedestrian access to footpaths was also not impacted. No complaints were received as a result of these unapproved OOHW works taking place.

### **5.6.3 Audits**

Nil.

### **5.7 Looking Forward – Core Focus Area**

- Ongoing OOHW works planned for February and March 2026



## 6 PHASE L – ROSEHILL POWER ENABLING WORKS (STAGE 3)

The Sydney Metro West Stage 3 of the planning approval process (including tunnel fit-out, station building and fit-out, operation and maintenance) for Sydney Metro West, application number SSI-22765520, was approved on 25 January 2023.

Sydney Metro submitted the Sydney Metro West Stage 3 - Phasing Report (Rev 1.0) to the Planning Secretary in August 2025. The **Rosehill Power Enabling Works (Phase L)** works deemed early works, under the Stage 3 approval are required to ensure follow on contractors' access to site and risk removal associated with delays. **Phase L** is being delivered by Quickway Construction Pty Ltd with the contract being awarded in August 2025.

The Environmental Representatives for the Sydney Metro Stage 3 Package are:

- Swathi Gowda
- Jo Robertson
- Michael Woolley
- Maulik Bapodara

### 6.1 Key Construction Activities During the Period

Site investigation works completed.

### 6.2 Key Construction Activities Look Ahead

- Durham Street Ancillary Facility set-up scheduled end of January 2026 / start of February 2026
- Main construction activities are scheduled to commence last week of January 2026 / start of February 2026, at this stage.

### 6.3 ER Inspections

As no main construction works have occurred, no ER Inspections during the reporting period.

#### 6.3.1 Photos

Not applicable as there were no inspections.

### 6.4 Endorsed Document/s

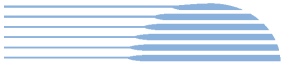
The ER has received the following draft documents for review and comment.

- DNVIS December 2025 (Doc no. 25014-NV-RP-2-1)

It is noted that CEMP (Revision 4, dated 13 November 2025) was submitted to DPHI under CoA C3, with correspondence received from DPHI, dated 09 December 2025 (Ref: SSI-22765520-PA-29).

### 6.5 Complaints

Nil.



HBI Healthy Buildings International Pty Ltd

## **6.6 Compliance**

### **6.6.1 Incidents**

Nil.

### **6.6.2 Non-compliance**

Nil.

### **6.6.3 Audits**

Nil.

## **6.7 Looking Forward – Core Focus Area**

- Ongoing review, comment and then endorsement of documents as required by the approved Phasing Report to enable Construction (for e.g. DNVIS).
- Construction commencement scheduled in last week of January 2026 / start of February 2026, pending approvals.



## **7 SYDNEY METRO RETAINED OBLIGATIONS AND OTHER ACTIVITY**

The Environmental Representatives for the Sydney Metro Retained Obligations and other Activities are:

- Swathi Gowda
- Jo Robertson

The Sydney Metro Retained Obligations and other Activities, refers to any activities where responsibility for completion has been retained by Sydney Metro outside of the main work packages. These works typically do not require an EPL and are often low risk, exempt or administrative in nature.

### **7.1 Key Construction Activities During the Period**

The ER is not aware of other Sydney Metro managed construction activities during the period.

### **7.2 Key Construction Activities Look Ahead**

The ER is not aware of other Sydney Metro managed upcoming construction activities.

### **7.3 ER Inspections**

As there were no construction works, there were no ER Inspections during the reporting period.

#### **7.3.1 Photos**

Not applicable as there were no inspections.

### **7.4 Endorsed Document/s**

Nil.

### **7.5 Complaints**

No complaints have been reported to the ER during the reporting period.

### **7.6 Compliance**

#### **7.6.1 Incidents**

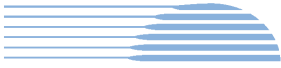
No incidents have been reported to the ER during the reporting period.

#### **7.6.2 Non-compliance**

No non compliances have been reported to the ER during the reporting period.

#### **7.6.3 Audits**

Independent Audits are reported (where relevant) in other sections of this Monthly Report.



## **8 STATEMENT OF LIMITATIONS**

Healthy Buildings International (HBI) has prepared this report in accordance with the requirements of:

- Condition A30(k) of the Sydney Metro West, Concept and Stage 1 SSI 10038 Approval (11 March 2021),
- Condition A32(k) of the Sydney Metro West – The Bays to Sydney CBD SSI 19238057 Approval (24 August 2022), and
- Condition A33 (k) of the Sydney Metro West – Rail Infrastructure, Stations, Precincts and Operations SSI 22765520 Approval (25 January 2023)

The report is for the sole purposes of Department of Planning, Housing and Infrastructure (DPHI) and Sydney Metro. It has been prepared based on generally accepted practices and standards at the time it was prepared. No other warranty, expressed or implied, is made as to the professional advice included in this Report. This report did not assess any aspects relating to safety.

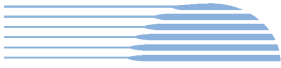
Where the Report indicates that information has been provided to HBI by third parties, HBI assumes no liability for any inaccuracies in or omissions to that information.

This Report was prepared based on the conditions encountered and information reviewed at this time. HBI disclaims responsibility for any changes that may have occurred after this time.

This Report should be read in full. No responsibility is accepted for use of any part of this report in any other context or for any other purpose or by third parties. This Report does not purport to give legal advice. Legal advice can only be given by qualified legal practitioners.

Except as required by law, no third party may use or rely on this Report unless otherwise agreed by HBI in writing. Except as specifically stated in this section, HBI does not authorise the use or findings of this Report by any third party.

To the extent permitted by law, HBI expressly disclaims and excludes liability for any loss, damage, cost or expenses suffered by any third party relating to or resulting from the use of, or reliance on, any information contained in this Report. HBI does not admit that any action, liability or claim may exist or be available to any third party.



HBI Healthy Buildings International Pty Ltd

## **9 APPENDIX A – ER DOCUMENT ENDORSEMENT RECORDS (ETP ONLY)**

- Nil



HBI Healthy Buildings International Pty Ltd

**10 APPENDIX B – ER DOCUMENT ENDORSEMENT RECORDS (STAGE 3 ONLY)**

Nil