

Mr Rob Sherry
Team Leader Compliance – Government Projects
Department of Planning, Housing and Infrastructure
Locked Bag 5022
PARRAMATTA NSW 2124

4 September 2025

Ref:201208-ER_DPHI-August 2025

Dear Rob

RE: Sydney Metro - Sydney Metro West SSI - ER Monthly Report for August 2025

Healthy Buildings International (HBI) submits this report to the Secretary in accordance with:

- Condition A30 (k) of the Sydney Metro West, Concept and Stage 1 SSI 10038 Approval (11 March 2021), and associated modifications (MOD 1 - 28 July 2021, MOD 2 - 3 June 2022, MOD3 – 4 July 2022, MOD 4 - 23 December 2022, MOD 5 – 20 September 2023 and MOD 6 – 6 November 2024); and
- Condition A32(k) of the Sydney Metro West – The Bays to Sydney CBD SSI 19238057 Approval (24 August 2022) and associated modifications (MOD 1 – April 2023, MOD 2 – October 2023, and MOD 3 – November 2024)
- Condition A33 (k) of the Sydney Metro West – Rail Infrastructure, Stations, Precincts and Operations SSI 22765520 Approval (25 January 2023)

The attached summary details the key activities undertaken by Environmental Representatives for Sydney Metro – Sydney Metro West for the month of August 2025.

Yours sincerely

Jo Robertson
Environmental Representative

Cc:

DPHI: Major Projects Portal

Sydney Metro: John Ieroklis, Maria Doumit, Andrew Hendy, Cath Snelgrove, Ari Stypel, Ryan Butler, Syed Shah, Valerie Lebon, Sarah Lepre

Contractors: Jared Lipton (AFJV), Steph Mifsud (GLC), Sally Reynolds (JCG)



Table of Contents

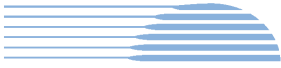
1	Phase B - Central Tunnelling Package (Stage 1)	5
1.1	Key Construction Activities During the Period	5
1.2	Key Construction Activities Look Ahead	6
1.3	ER Inspections	6
1.3.1	Photos	6
1.4	Endorsed Documents	7
1.5	Complaints	7
1.6	Compliance	8
1.6.1	Incidents	8
1.6.2	Non-compliance and Potential Non Compliance	8
1.6.3	Audits	8
1.7	Looking Forward – Core Focus Areas	8
2	Phase F – Western Tunnelling Package (Stage 1)	9
2.1	Key Construction Activities During the Period	9
2.2	Construction Activities Look Ahead	10
2.3	ER Inspections	10
2.3.1	Photos	11
2.4	Endorsed Documents	13
2.5	Complaints	13
2.5.1	Incidents	13
2.5.2	Non-compliance	14
2.5.3	Audits	14
2.6	Looking Forward – Core Focus Area	14
3	Phase G – Eastern Tunnel Package (Stage 2)	15
3.1	Key Construction Related Activities During the Period	15
3.2	Key Construction Activities Look Ahead	16
3.3	ER Inspections	16
3.3.1	Photos	17
3.4	Endorsed document/s	18
3.5	Complaints	18
3.6	Compliance	19
3.6.1	Incidents	19
3.6.2	Non-compliance	19
3.6.3	Audits	19
3.7	Looking Forward – Core Focus Areas	19



4	Phase H2 – Five Dock Overhead to Underground Relocation Works (Stage 1)	20
4.1	Key Construction Activities During the Period	20
4.2	Key Construction Activities Look Ahead.....	20
4.3	ER Inspections	20
4.3.1	Photos	20
4.4	Endorsed Document/s.....	20
4.5	Complaints	20
4.6	Compliance.....	21
4.6.1	Incidents.....	21
4.6.2	Non-compliance	21
4.6.3	Audits	21
4.7	Looking Forward – Core Focus Area.....	21
5	Phase J – North Strathfield Power Enabling Works (Stage 1)	22
5.1	Key Construction Activities During the Period	22
5.2	Key Construction Activities Look Ahead.....	22
5.3	ER Inspections	22
5.3.1	Photos	22
5.4	Endorsed Document/s.....	22
5.5	Complaints	22
5.6	Compliance.....	22
5.6.1	Incidents.....	23
5.6.2	Non-compliance	23
5.6.3	Audits	23
5.7	Looking Forward – Core Focus Area.....	23
6	Phase L – Rosehill Power Enabling Works (Stage 3)	24
6.1	Key Construction Activities During the Period	24
6.2	Key Construction Activities Look Ahead.....	24
6.3	ER Inspections	24
6.3.1	Photos	24
6.4	Endorsed Document/s.....	24
6.5	Complaints	24
6.6	Compliance.....	24
6.6.1	Incidents.....	24
6.6.2	Non-compliance	24



- 6.6.3 Audits 25
- 6.7 Looking Forward – Core Focus Area 25
- 7 Sydney Metro Retained Obligations and Other Activity 26**
 - 7.1 Key Construction Activities During the Period 26
 - 7.2 Key Construction Activities Look Ahead 26
 - 7.3 ER Inspections 26
 - 7.3.1 Photos 26
 - 7.4 Endorsed Document/s 26
 - 7.5 Complaints 26
 - 7.6 Compliance 26
 - 7.6.1 Incidents 26
 - 7.6.2 Non-compliance 26
 - 7.6.3 Audits 26
- 8 Statement of Limitations 27**
- 9 Appendix A – ER Document Endorsement Records (ETP only) 28**
- 10 Appendix B – ER Document Endorsement Records (Stage 3 only) 29**



1 PHASE B - CENTRAL TUNNELLING PACKAGE (STAGE 1)

The Environmental Representatives for Phase B of Sydney Metro West are:

- Michael Woolley
- Maulik Bapodara
- Swathi Gowda
- Jo Robertson

Phase B – Central Tunnelling Package (CTP) is being delivered by Acciona Ferrovia Joint Venture (AFJV). Phase B of Sydney Metro West has been further broken into:

- Phase B1: Civil works
- Phase B2: Tunnelling works

The AFJV hold EPL 21610 for this Phase of works. Activities defined as Phase B2-Tunneling Works in the Staging Report for Metro West commenced during the November 2022 reporting period at Burwood North. Substantial Construction has been achieved under the CTP contract for the remaining sites. Rectification works were completed during the previous reporting period. AFJV are now acting in a Transitional Handover Services capacity that comprises ongoing maintenance activities and specific works as required of Sydney Metro.

1.1 Key Construction Activities During the Period

The Bays

- Operation of the water treatment plant and management/maintenance of areas handed over including the tunnels.
- Commencement of works to relocate two Temporary Tunnel Service pits within the station box in front of the tunnels.

Five Dock

- East and West Shaft sites: No works observed on site during site inspections other than general maintenance at the base of the shafts. Runoff water in the shafts is automatically pumped to the Bays for treatment.
- Use of house ongoing at 21 Waterview Street adjacent the eastern shaft by Sydney Metro personnel.

Burwood North

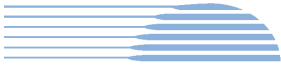
- Deliveries and unloading of items to the surface. Removal of items post completion of the rectification works.
- Water treatment plant not operating – general maintenance activities only.
- South Shaft: Removal of all sheds except for one toilet block.

North Strathfield

- No works at the site which was locked up and no personnel on site permanently.
- Pumping of water from the station box to the Bays for treatment and discharge.

Sydney Olympic Park

- Tunnel maintenance ongoing with minor repairs as required.



- Use of a workshop and laydown of materials at the surface for tunnellers
- Remaining site sheds are being used to accommodate the workforce and remaining people from the Project Delivery Office which has been vacated.

AFJV continue to manage all sites (except much of the Bays which has been handed over to ETP Contractors).

1.2 Key Construction Activities Look Ahead

- Ongoing activities as described above
- Some defect works ongoing across some sites and in the tunnels.
- Ongoing operation of the water treatment plant at the Bays.
- Ongoing management/maintenance/caretaking of sites.
- Planned removal of walkway on the west of the shaft at Five Dock west.

1.3 ER Inspections

There were two ER inspections conducted during the reporting period on Thursday 14th and Friday 29th August. Currently inspections are held fortnightly, with each site being inspected monthly. There were two actions raised at SOP during the inspections in August relating to maintenance of ERSED controls and the storage of dangerous goods.

1.3.1 Photos



Figure 1.1 Station Box (The Bays). Services pits in the base of the station box were being moved.



Figure 1.2 The water treatment plant operating at the Bays (The Bays).



Figure 1.3 Eastern Shaft – works completed – ongoing repairs and maintenance activities (Five Dock).

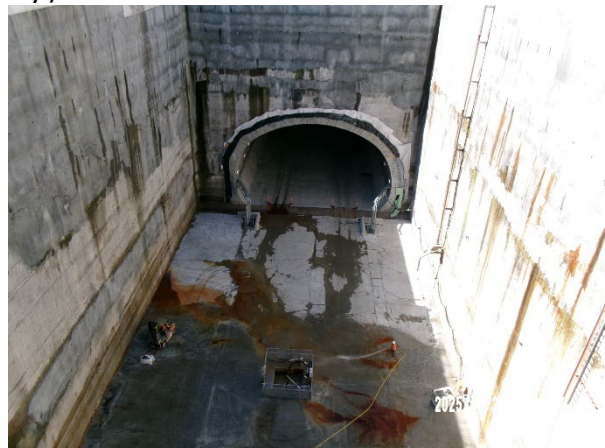


Figure 1.4 Western Shaft – works completed - maintenance activities ongoing (Five Dock).



Figure 1.5 Ongoing maintenance in the nozzles (Burwood North).



Figure 1.6 Station Box (Burwood North).



Figure 1.7 No works observed in the station box at North Strathfield (NS).



Figure 1.8 Access for maintenance works in the tunnel (SOP).

1.4 Endorsed Documents

The following documents were approved during the reporting period:

- Groundwater Management Plan (Rev 11) and Groundwater Monitoring Program (Rev 10); and
- Construction Environmental Management Plan (CEMP Rev 10)

The Groundwater Management Plan and Groundwater Monitoring Program were updated to reflect the cessation of groundwater monitoring post completion of construction activities for the tunnel.

The CEMP was updated to reflect the reduced activities related to Transitional Handover Services (THS). This update included changes to site layouts, reduced AFJV inspections and other compliance activities given the reduced scope of work during THS.

1.5 Complaints

Based on the monthly Sydney Metro Complaint Register issued for August 2025, there were no complaints reported for the month. This reflects the significantly reduced activities required during THS.



HBI Healthy Buildings International Pty Ltd

1.6 Compliance

1.6.1 Incidents

No incidents as defined in the Infrastructure Approval were reported by AFJV during the reporting period.

1.6.2 Non-compliance and Potential Non Compliance

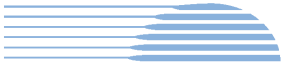
No non compliances were raised by AFJV or Sydney Metro during the reporting period and none were observed by the ER.

1.6.3 Audits

An Independent Environmental Audit for the Metro West project including CTP was conducted during August 2025.

1.7 Looking Forward – Core Focus Areas

- Ongoing management of sites during Transitional Handover Services.



2 PHASE F – WESTERN TUNNELLING PACKAGE (STAGE 1)

The Environmental Representatives for Phase F of Sydney Metro West are:

- Swathi Gowda
- George Kollias
- Michael Woolley
- Maulik Bapodara
- Jo Robertson

Phase F – Western Tunnelling Package (WTP) is being delivered by Gamuda Australia Laing O’Rourke Consortium (GLC).

GLC are constructing this Phase of Sydney metro West under EPL 21676.

2.1 Key Construction Activities During the Period

During the reporting period, the following activities were being undertaken at Westmead, Parramatta and the Clyde stabling and maintenance facility which includes the Rosehill, Clyde Dive and Clyde MSF construction sites:

Westmead

- Concrete defect repairs
- Station Cavern headwall installation and steel fixing/scaffold installation
- Station Cavern arch formwork OOH (deliveries only) and installation
- Plenum slab pours
- Euroform demolition completed

Parramatta

- Station Box:
 - TBM 1 enroute to Westmead
 - TBM 2 into residual sandstone layer of station box
 - D-wall repairs
- Archaeology:
 - Zone 8c/9b - Archaeological investigation and clearance works ongoing
 - Zone 9a - Archaeological investigation and clearance works completed
- Other works
 - George St Heritage Shops – Mould remediation works

Rosehill

- TBM1 and TBM2 in production (towards Westmead)
- Cross passage excavation - XP84
- Water Treatment Plant operation including off-site discharge is ongoing
- TBM material being taken off site and on-site for reuse

Clyde Dive

- Lining Erection Machine (LEM) operational - ring building ongoing
- Storage and loading of LEM segments
- Caverns and cross passage of spur tunnels FRP ongoing
- Demolition of Acoustic Shed ongoing; with remaining steel structure removal
- Tree removal works along ATC completed



- Removal of haulage road on eastern boundary and excavation for piling pad for retaining wall commenced
- Relocation of site amenities and workshops

Clyde MSF

- Close out of defects across Unwin St and Fleet St
- Potable watermain realignment finishing works
- Stage 1 of Flood Basin excavation and construction completed
- Bulk earth works and fill across MSF (East and West) ongoing
- Landscaping and chipseal application ongoing
- Treated PASS and bonded asbestos stockpiling
- MSF Crib shed and parking lot repositioning works
- Dewatering activities across site

SOP

- Handed over on 15 April 2025

2.2 Construction Activities Look Ahead

The key construction activities planned are similar to those listed in Section 2.1, with the addition of the following:

- Various OOHW (conducted under EPL)
- Westmead – Planning underway for demobilisation of WTP at Westmead (proposed in October 2025)
- Clyde Dive - Piling works to commence for retaining wall installation

2.3 ER Inspections

Currently, the sites are divided into two groups and visited typically fortnightly (weather permitting) for ER inspections. The two groups are:

- Parramatta and Westmead
- Clyde Dive, Clyde MSF and Rosehill

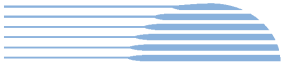
Three ER inspections were conducted during the reporting period (06/08/2025, 18/08/2025, 20/08/2025), with the fourth ER Inspection rescheduled and undertaken on 01/09/2025 (outside this reporting period); with opportunities for improvement (OFIs) identified and the following actions (summarised) raised during the month noting wet weather:

Parramatta, Westmead and Rosehill

- Nil

Clyde Dive

- Raised action to install tree protection (fencing) and signage around trees to remain along eastern boundary, in addition to offset and flagging installed for trees to remain.



Clyde MSF

- MSF East: Raised action to cover windrow/ tidy up material build-up (fines) on concrete causeway including around controls established and cover minor section of headwall near BioBasin.

2.3.1 Photos



Figure 2.1- Parramatta Site: TBM 2 traversing station box.



Figure 2.2- Parramatta Site: Ventilation fan installed and operational.



Figure 2.3 – Parramatta Site: Zone 8c - Archaeological investigation and clearance works.



Figure 2.4 – Parramatta Site: Zone 9b - concrete slab removal, with misting canon operational to manage dust.

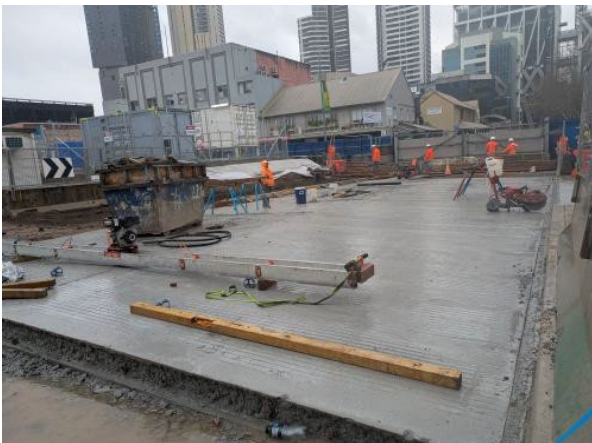


Figure 2.5 – Parramatta Site: Gate 1 Concrete slab poured for haul road.



Figure 2.6 – Parramatta Site: Area 7 - site shed relocation works.

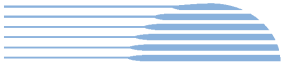


Figure 2.7 – Westmead Site: Formwork build for Station Cavern.



Figure 2.8 – Westmead Site: Crane set-up at surface level.



Figure 2.9 – Clyde Dive Site: Acoustic Shed demolition works – all panels removed; with steel frame to be removed.



Figure 2.10 – Clyde Dive Site: Grouting Igloo - no concrete deliveries observed.



Figure 2.11 – Clyde Dive: Concrete stockpile from haul road removal works along eastern boundary.



Figure 2.12 – Clyde MSF Site: Flood Relief Bridge with secondary slab poured to accommodate workshops being relocated from Clyde Dive.



Figure 2.13 – Clyde MSF Site: Augering underway for fence post.



Figure 2.14 – Clyde MSF Site: Stage 1 of Flood Basin excavation and construction completed.

2.4 Endorsed Documents

The following documents were approved or endorsed by the ER during the reporting period:

- Construction Environmental Management Plan (Rev G)
- Surface Water Quality Monitoring Program (Rev G)

2.5 Complaints

Based on the Sydney Metro Complaint Register for August 2025, there were four complaints reported during the month, compared to five complaints in July 2025. Complaints are summarised below:

Clyde

- One related to property damage/prevention, water and soil management (dirt on vehicle)

Tunnelling

- One related to traffic, transport and parking (driver behaviour)

Parramatta

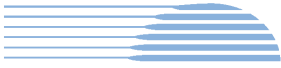
- One related to missing out on ticket to open day event at Parramatta in August 2025

Westmead

- One related to noise (use of street sweeper) during Standard Construction hours

2.5.1 Incidents

No incidents considered to represent Incidents as defined under the Infrastructure Approval were reported to or observed by the ER during the reporting period.



Class 3 incidents (predominantly related to spills and one related to a break in at the George Street Heritage Shops) reported under GLC/SM reporting system during the reporting period.

2.5.2 Non-compliance

Nil non-compliances reported to the ER during the reporting period.

2.5.3 Audits

An Independent Environmental Audit for the Metro West project including WTP was conducted during August 2025 (26 and 27 August 2025).

2.6 Looking Forward – Core Focus Area

The core focus areas for works (including upcoming works) are:

- Parramatta – Relining of sewer network (OOHW scheduled late September 2025)
- Westmead - Hawkesbury/Priddle Street intersection works (OOHW scheduled in September/October 2025 school holiday period)
- Clyde MSF - Progressive stabilisation activities of portions of site
- Clyde Dive - Removal of acoustic shed (steel frame – largely removed), adjoining slabs and haul road
- Clyde Dive - Permanent boundary fence works (ATC boundary) - piling works (to commence) for retaining wall, drainage construction and security fence installation
- Utility works along local roads in the vicinity of Clyde MSF to relocate High Voltage and Low Voltage (HV/LV) route



3 PHASE G – EASTERN TUNNEL PACKAGE (STAGE 2)

The Sydney Metro West Eastern Tunnel Package is Stage 2 of the Sydney Metro West CSSI and is described as major civil construction works between The Bays and Sydney CBD, including station excavation at Pyrmont and Hunter Street and tunnel excavation between the Bays and Hunter Street. Stage 2 (SSI 19238057) was approved on the 24 August 2022.

The Environmental Representatives for the Sydney Metro West Eastern Tunnel Package are:

- Michael Woolley
- Maulik Bapodara
- Swathi Gowda
- Jo Robertson

The Eastern Tunnelling Package (ETP) is being delivered by John Holland CPB Ghella Joint Venture (JCG) with the contract being awarded in November 2022. Sydney Metro notified DPHI that the date of commencement of construction was 17 March 2023. JCG have received Environmental Protection Licence (EPL 21784) for the project.

3.1 Key Construction Related Activities During the Period

Works conducted during the reporting period included:

Hunter Street East:

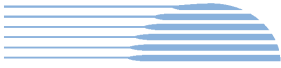
- Ongoing excavation and wall support of the southern portion of the site adjoining Hunter Street. Breakthrough to below decline tunnels achieved. Excavation with rock hammers occurring 7 days per week.
- Ongoing removal of the remaining items of the former acoustic shed.
- Wall support works along the site boundary with O'Connell Street including rock anchor drilling and installation and FRP works.
- Ongoing concrete deliveries and FRP activities for pours in the caverns. Use of air ventilation systems and other tunnelling support activities for works in the caverns.
- Use of the steel deck with access driveways to O'Connell Street and Hunter Street for load out of spoil using kibble and unloading frame.
- Use of the crib sheds and offices over Richard Johnson Square. Painting of the underside of the structure white for better lighting at night.
- Use of the new water treatment plant under the steel deck.

Hunter Street West:

- Removal of the ramp at the eastern access to Hunter Street.
- Construction of the steel deck.
- Wall support around the perimeter of the excavation with shotcrete and rock anchors.
- Ongoing sporadic excavation of selected sections of the shaft. Storage of spoil from the ramp in the southern area of site.
- Strengthening activities at the Skinner's Hotel during standard and OOHs.
- Management of water in rainy conditions.
- Ongoing deliveries and pedestrian management along Hunter Street.
- Milligan's development continued on the site adjacent Hunter Street West with scaffolding set up around the largest building on the corner of Pitt Street and Hunter Street prior to its demolition.

Pyrmont East:

- Ongoing preparation for re-launch of the TBMs with TBMs traversed across the caverns with TBM Ruby in the Nozzle by the end of the month.
- Kibbles and load out structures removed from the Pyrmont East site, hence all spoil now being removed from Pyrmont West.
- Ongoing use of the tunnel ventilation system.



- Use of site amenities/sheds on the steel deck to the east of the acoustic shed and use of one lane on Union Street for storage of containers and a sub-station.
- Ongoing treatment of water generated from tunnelling activities and groundwater. Discharge of treated water to stormwater system.
- Decommissioning of the water treatment plant with all water being directed to the Bays for treatment.

Pymont West:

- Near completion of TBM traverse.
- Ongoing excavation of the shaft using rock hammers – near completed.
- Ongoing excavation of the services adit by Road Header. A scrubber unit was set up to treat dust from the operation.
- Use of profiler to excavate the invert for the caverns.
- Ongoing use of the kibble for loading out spoil onto trucks. Trucks exiting to Pymont Street.
- Drainage of water to the tunnelling operations.

The Bays:

- TBM traversing, hence slurry plant was not operating. Ongoing construction of cross passages XP8-XP12 with excavation now completed for these cross passages.
- Water treatment and discharge using the construction water treatment plant.
- Maintenance of the slurry treatment plant; spoil shed and related equipment while the TBM is not tunnelling.
- Receipt and storage of spoil from Hunter Street and Pymont sites and load out spoil.
- General support activities such as in the workshops, segment delivery and storage and use of site offices.
- Use of the truck marshalling area by trucks waiting to load up and/or attend other project sites.
- Use of a new staff car parking area on the former CTP spoil shed area.

3.2 Key Construction Activities Look Ahead

The below works are planned to occur in the following reporting period:

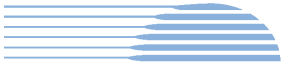
- Planned hammering works in the caverns into the evening period to commence for two months at Pymont, with two weeks of works proposed to extend across the nighttime period at the eastern end of the station cavern.
- Ongoing activities as described above.
- Ongoing traverse of the TBMs across the caverns and shafts and re-commencement of TBM tunnelling.
- Ongoing excavation of the caverns invert. Load out of spoil.
- Ongoing removal of the slab and footings of the former shed at Hunter East.
- Excavation of the shafts at the Hunter Street sites 7 days per week.
- Ongoing construction of cross passages in the tunnel between Pymont and the Bays.
- Planning for tunnelling and cross passage works along the alignment between Pymont and Hunter Street.

3.3 ER Inspections

Four ER inspections were conducted during the reporting period on each Tuesday in August. The following action was raised during the inspections:

- JCG to ensure all activities occurring at the Minor Ancillary Facility (MAF) area (Pymont Laydown area on the approach to the old Glebe Island Bridge) are in accordance with the assessed MAF (no servicing and no storage of hazardous materials). JCG to ensure all spill risks are addressed/materials removed.

JCG were responsive to ER feedback during inspections and for the close out of actions raised.



3.3.1 Photos



Figure 3.1 Hunter Street East: Former Acoustic Shed area. Wall support along the O'Connell Street boundary.



Figure 3.2 Hunter Street East: Excavation adjacent Hunter Street and load out of spoil from the steel deck.



Figure 3.3 Hunter St West: Steel deck construction.



Figure 3.4 Hunter Street West: Strengthening works at Skinner's Hotel.



Figure 3.5 Pyrmont East: TBM Ruby traversed into the nozzle. Works in the nozzles to prepare for TBM re-launch.

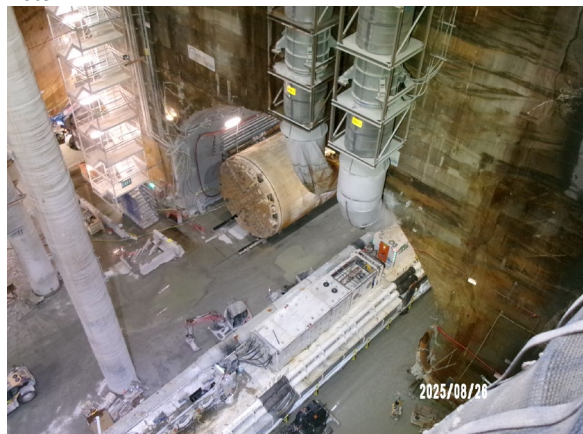


Figure 3.6 Pyrmont East: Both TBMs traversed through the caverns.



Figure 3.7 Pymont West: Load out of spoil ongoing.



Figure 3.8 Pymont West: Services adit.



Figure 3.9 The Bays: Use of water cart for dust suppression.



Figure 3.10 The Bays: Water management controls in place and operating.

3.4 Endorsed document/s

The following documents were signed, approved or endorsed during the reporting period.

- Soil and Water Management Plan (Rev 5); and
- Spoil Management Plan (Rev 4)

The Soil and Water Management Plan and the Spoil Management Plan were updated as part of an annual review of each of the Plans.

3.5 Complaints

The monthly Sydney Metro complaint register for August 2025 indicated nine complaints were reported to the Project, with one of these found not to be related to ETP activities. This compares to 9 complaints received in July 2025.

Four of the complaints related to the Hunter Street sites, with three of these related to noise from the Hunter East site. Two of these related to noise from OOHWs with one from noise during standard hours. One complaint was received at Hunter West for worker behaviour.

Three complaints related to noise at Pymont. One of these was for OOHWs, one for noise during standard hours and one for cumulative noise over all periods. One further complaint related to light spill from the Pymont East site.



3.6 Compliance

3.6.1 Incidents

No incidents considered to represent an Incident as defined under the Project Approval were reported to the ER during the reporting period.

3.6.2 Non-compliance

No Non-Compliance reports (NCRs) were issued by JCG or Sydney Metro during the period.

3.6.3 Audits

An Independent Environmental Audit was conducted for the Metro West project in August which included ETP activities.

3.7 Looking Forward – Core Focus Areas

In the next reporting period, the ER Team will be focused on:

- General monitoring of construction activities
- Noise associated with excavation of the Hunter Street shafts
- Review of planned OOHWs at Pyrmont
- Interactions of activities with neighbouring developments at Hunter Street



4 PHASE H2 – FIVE DOCK OVERHEAD TO UNDERGROUND RELOCATION WORKS (STAGE 1)

With the ER endorsement and submission to the Planning Secretary of the Sydney Metro West Stage 1 Phasing Report Rev 2.0, the **Phase H2 Five Dock Overhead to Underground Relocation Works** commenced as a package of works. This package will be delivered by Quickway Constructions with the contract being awarded in July 2025. Sydney Metro will notify DPHI of the date of commencement of construction, proposed for November 2025. Low Impact Works are likely to commence in September 2025.

Phase H2 will involve the removal of two wooden power poles and the relocation of one wooden power pole. Electrical works on the Ausgrid network including underground relocation of five bays of overhead wiring outside of the Five Dock eastern construction site, along Second Avenue and Waterview Street, Five Dock. The scope of works will also involve installation of three pillars and four street light poles with service connections to nine private properties at Waterview Street and Second Avenue. The trenching works to install underground electrical services will occur within the roadway and footpaths of Waterview Street and Second Avenue. The excavation depth would be between 500mm to 1000mm below ground level and trenches would vary in width up to 950mm.

The ancillary facility at Silverwater used for Phase H1 will also be utilised for Phase H2 as a laydown area. A minor ancillary facility may be established at the Five Dock worksite for minor storage.

The Environmental Representatives for the Sydney Metro Stage 1 Phase H2 Package are:

- George Kollias
- Jo Robertson

4.1 Key Construction Activities During the Period

Nil pre-construction or construction activities during the period.

4.2 Key Construction Activities Look Ahead

Low Impact Works are proposed to undertake Investigative Activities, which will include excavating slit trenches and potholes to locate services and determine ground conditions, lifting service pits by non-mechanical and mechanical means, mark out service locations, waste classification sampling, site clean-up and demobilisation. OOHW works are proposed amongst these Low Impact Works.

4.3 ER Inspections

Nil ER Inspections during the reporting period. A site familiarisation visit was undertaken with Michael Woolley, to discuss previous CTP works and likely environmental and community aspects at the location.

4.3.1 Photos

Not applicable as there were no inspections.

4.4 Endorsed Document/s

- Sydney Metro West Stage 1 - Phasing Report Rev 2.0 (endorsed on 6 August 2025)

ER has also reviewed and commented on LIWA, HVLR, CTMP, DNVIS, NVMP, OOHW Permit and CEMP

4.5 Complaints

Nil.



HBI Healthy Buildings International Pty Ltd

4.6 Compliance

Nil.

4.6.1 Incidents

Nil.

4.6.2 Non-compliance

Nil.

4.6.3 Audits

Nil.

4.7 Looking Forward – Core Focus Area

Development of Project Plans and required documents, for ER / AA endorsement, ER Approval (as required) and/or Planning Secretary approval (as required).



5 PHASE J – NORTH STRATHFIELD POWER ENABLING WORKS (STAGE 1)

With the ER endorsement and submission to the Planning Secretary of the Sydney Metro West Stage 1 Phasing Report Rev 1.8, the **Phase J North Strathfield Power Enabling Works** commenced as a package of works. This package will be delivered by Syscon with the contract being awarded in August 2025. Sydney Metro will notify DPHI of the date of commencement of construction, proposed for November 2025. Low Impact Works may be undertaken in September 2025.

Phase J will involve a small portion of electrical works that has been transferred from the Central Tunnelling Package (Phase B) to Phase J relating to the establishment of an electrical kiosk at North Strathfield to provide high voltage power to the site for follow-on contractors. The Principal Contractor undertaking Phase J will be responsible for completing the design for this scope and conducting the remaining works.

The majority of the work to establish a high voltage power connection has been completed by the Phase B Principal Contractor and only requires modifications to the end connection points at the kiosk and the live mains. The North Strathfield Power Enabling Works includes the following physical activities: investigations to establish locations of existing utilities; retrenching for low voltage (LV) works; and installation of electrical kiosk including internal reticulation and outage preparation works.

The Environmental Representatives for the Sydney Metro Stage 1 Phase J Package are:

- George Kollias
- Jo Robertson

5.1 Key Construction Activities During the Period

Nil pre-construction or construction activities during the period.

5.2 Key Construction Activities Look Ahead

Low Impact Works may be proposed to undertake survey of proposed alignment and connections, and service investigations to determine potential clashes with other utilities.

5.3 ER Inspections

Nil ER Inspections during the reporting period.

5.3.1 Photos

Not applicable as there were no inspections.

5.4 Endorsed Document/s

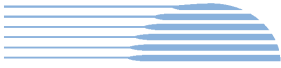
Nil documents endorsed this period.

5.5 Complaints

Nil.

5.6 Compliance

Nil.



HBI Healthy Buildings International Pty Ltd

5.6.1 Incidents

Nil.

5.6.2 Non-compliance

Nil.

5.6.3 Audits

Nil.

5.7 Looking Forward – Core Focus Area

Development of Project Plans and required documents, for ER / AA endorsement, ER Approval (as required) and/or Planning Secretary approval (as required).



6 PHASE L – ROSEHILL POWER ENABLING WORKS (STAGE 3)

The Sydney Metro West Stage 3 of the planning approval process (including tunnel fit-out, station building and fit-out, operation and maintenance) for Sydney Metro West, application number SSI-22765520, was approved on 25 January 2023.

Sydney Metro submitted the Sydney Metro West Stage 3 - Phasing Report (Rev 1.0) to the Planning Secretary in August 2025. The **Rosehill Power Enabling Works (Phase L)** works deemed early works, under the Stage 3 approval are required to ensure follow on contractors' access to site and risk removal associated with delays. **Phase L** is being delivered by Quickway Construction Pty Ltd with the contract being awarded in August 2025.

The Environmental Representatives for the Sydney Metro Stage 3 Package are:

- Swathi Gowda
- Jo Robertson
- Michael Woolley
- Maulik Bapodara

6.1 Key Construction Activities During the Period

The ER is not aware of any construction activities during the period.

6.2 Key Construction Activities Look Ahead

It is understood that low impact early investigative works prior to trenching the alignment are scheduled to commence with an indicative date of 6 October 2025.

6.3 ER Inspections

Nil ER Inspections during the reporting period.

6.3.1 Photos

Not applicable as there were no inspections.

6.4 Endorsed Document/s

- Sydney Metro West Stage 3 - Phasing Report Rev 1.0 (endorsed on 22 August 2025) (refer Appendix B)

6.5 Complaints

Nil.

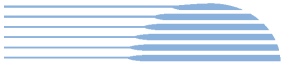
6.6 Compliance

6.6.1 Incidents

Nil.

6.6.2 Non-compliance

Nil.



HBI Healthy Buildings International Pty Ltd

6.6.3 Audits

Nil.

6.7 Looking Forward – Core Focus Area

Low impact works scheduled to commence in October 2025.



7 SYDNEY METRO RETAINED OBLIGATIONS AND OTHER ACTIVITY

The Environmental Representatives for the Sydney Metro Retained Obligations and other Activities are:

- Swathi Gowda
- Jo Robertson

The Sydney Metro Retained Obligations and other Activities, refers to any activities where responsibility for completion has been retained by Sydney Metro outside of the main work packages. These works typically do not require an EPL and are often low risk, exempt or administrative in nature.

7.1 Key Construction Activities During the Period

The ER is not aware of other Sydney Metro managed construction activities during the period.

7.2 Key Construction Activities Look Ahead

The ER is not aware of other Sydney Metro managed upcoming construction activities.

7.3 ER Inspections

As there were no construction works, there were no ER Inspections during the reporting period.

7.3.1 Photos

Not applicable as there were no inspections.

7.4 Endorsed Document/s

- Sydney Metro West Stage 1 - Phasing Report Rev 2.0 on 6 August 2025

7.5 Complaints

No complaints have been reported to the ER during the reporting period.

7.6 Compliance

7.6.1 Incidents

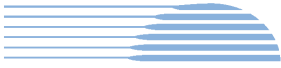
No incidents have been reported to the ER during the reporting period.

7.6.2 Non-compliance

No non compliances have been reported to the ER during the reporting period.

7.6.3 Audits

Independent Audits are reported (where relevant) in other sections of this Monthly Report.



8 STATEMENT OF LIMITATIONS

Healthy Buildings International (HBI) has prepared this report in accordance with the requirements of:

- Condition A30(k) of the Sydney Metro West, Concept and Stage 1 SSI 10038 Approval (11 March 2021),
- Condition A32(k) of the Sydney Metro West – The Bays to Sydney CBD SSI 19238057 Approval (24 August 2022), and
- Condition A33 (k) of the Sydney Metro West – Rail Infrastructure, Stations, Precincts and Operations SSI 22765520 Approval (25 January 2023)

The report is for the sole purposes of Department of Planning, Housing and Infrastructure (DPHI) and Sydney Metro. It has been prepared based on generally accepted practices and standards at the time it was prepared. No other warranty, expressed or implied, is made as to the professional advice included in this Report. This report did not assess any aspects relating to safety.

Where the Report indicates that information has been provided to HBI by third parties, HBI assumes no liability for any inaccuracies in or omissions to that information.

This Report was prepared based on the conditions encountered and information reviewed at this time. HBI disclaims responsibility for any changes that may have occurred after this time.

This Report should be read in full. No responsibility is accepted for use of any part of this report in any other context or for any other purpose or by third parties. This Report does not purport to give legal advice. Legal advice can only be given by qualified legal practitioners.

Except as required by law, no third party may use or rely on this Report unless otherwise agreed by HBI in writing. Except as specifically stated in this section, HBI does not authorise the use or findings of this Report by any third party.

To the extent permitted by law, HBI expressly disclaims and excludes liability for any loss, damage, cost or expenses suffered by any third party relating to or resulting from the use of, or reliance on, any information contained in this Report. HBI does not admit that any action, liability or claim may exist or be available to any third party.



HBI Healthy Buildings International Pty Ltd

9 APPENDIX A – ER DOCUMENT ENDORSEMENT RECORDS (ETP ONLY)



HBI Healthy Buildings International Pty Ltd

10 APPENDIX B – ER DOCUMENT ENDORSEMENT RECORDS (STAGE 3 ONLY)