

# Cross passage construction: between Clarence and York Street

5 March 2026

**The NSW Government is delivering Sydney Metro West – a new underground metro railway which will double rail capacity between Parramatta and the Sydney CBD, transforming Sydney for generations to come.**

**Stations have been confirmed at Westmead, Parramatta, Sydney Olympic Park, North Strathfield, Burwood North, Five Dock, The Bays, Pyrmont and Hunter Street in the Sydney CBD**

## **Cross passage construction: between Clarence and York Street**

Two Tunnel Boring Machines (TBMs) have passed your property to build the twin metro rail tunnels.

A cross passage connecting the twin rail tunnels is being constructed in your area.

Installation of ground and steel support and initial excavation has now been completed. This involved the removal of the concrete tunnel lining to expose the rock surface underneath.

These works have been carried out in preparation for excavation work which will continue for up to eight weeks.

Please see map over page with the location of this cross passage and an overview of the cross passage excavation process.

## **Cross passage construction activities**

- Drilling, saw cutting and installing ground support
- Excavating the cross passage using a rock hammer
- Installing waterproofing and concrete lining
- Removing excavated material via our construction sites in Pyrmont and Rozelle
- Low impact surveying and geotechnical investigations.

## **Work Hours**

- Cross passage construction work can occur 24 hours a day, 7 days per week

## **What to expect**

- Some vibration and ground borne noise may be experienced during cross passage construction work
- We will aim to schedule high impact work during standard construction hours
- We will undertake regular noise and vibration monitoring to ensure work is carried out within Project approvals.

## **Equipment and machinery**

- Includes but is not limited to excavators, rock hammers, drills, saws, elevated work platform, concrete trucks and equipment.

## **Stay up to date**

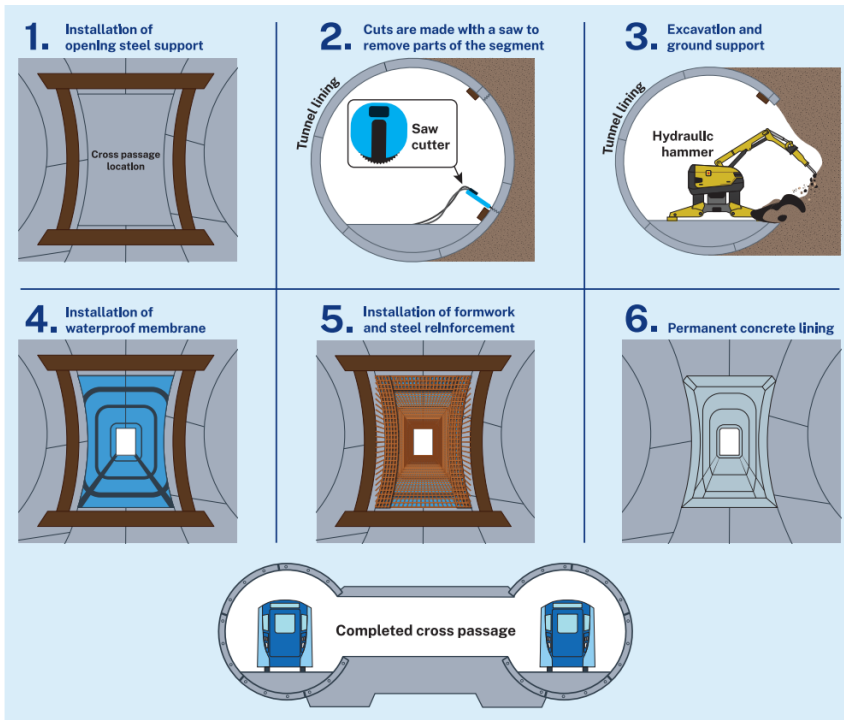
Our email updates provide the latest information about upcoming cross passage work. If you'd like to receive these email updates, please send a request to:

[MetroTunnelsJCGJV@transport.nsw.gov.au](mailto:MetroTunnelsJCGJV@transport.nsw.gov.au) and we will add you to the distribution list.

## Cross passage work location



## Cross passage excavation process



## Contact us



24-hour Project Infoline **1800 612 173**



**MetroTunnelsJCGJV@transport.nsw.gov.au**



Sydney Metro West, PO Box K659, Haymarket, NSW 1240



Download **Sydney Metro Connect** from the App store or get it on Google Play.