

Notification – Upcoming cross passage construction work

8 December 2025

The NSW Government is delivering Sydney Metro West – a new underground metro railway which will double rail capacity between Parramatta and the Sydney CBD, transforming Sydney for generations to come.

John Holland CPB Contractors Ghella Joint Venture (JCG) has been awarded the contract to deliver 3.5 kilometres of twin metro rail tunnels between The Bays and Hunter Street and excavate the Pyrmont and Hunter Street metro stations.

Cross passage construction work: Sussex Street

Two tunnel Boring Machines are passing your property to build the twin metro rail tunnels. A cross passage connecting the tunnels will be constructed in your area over the coming months.

Cross passages are an important safety feature of the metro tunnels, located about every 200 metres, they allow people to move between the rail tunnels in the unlikely event of an emergency.

The cross passage in your area is located approximately 39 metres below the ground. Construction activities are expected to commence from Monday 15 December 2025 and will take about six months to complete.

Please see map over page with the location of this cross passage and an overview of the cross passage excavation process.

Stay up to date

Our email updates provide the latest information about upcoming cross passage work. If you'd like to receive these email updates, please send a request to:

MetroTunnelsJCGJV@transport.nsw.gov.au and we will add you to the distribution list.

Work Hours

- Cross passage construction work can occur 24 hours a day, 7 days per week
- High impact work will occur during standard construction hours 7am – 6pm Monday to Friday and 8am – 6pm, Saturdays

Cross passage construction activities

- Drilling, saw cutting and installing ground support
- Excavating the cross passage using a rock hammer
- Installing waterproofing and concrete lining
- Removing excavated material via our construction sites in Pyrmont and Rozelle
- Low impact surveying and geotechnical investigations.

What to expect

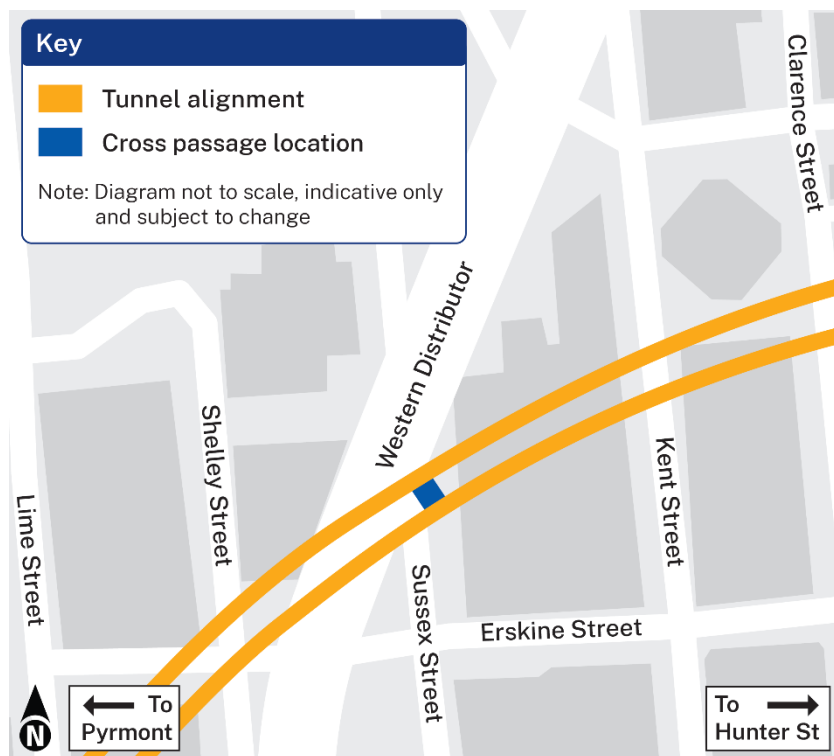
- Some vibration and ground borne noise may be experienced during cross passage construction work
- We will aim to schedule high impact work during standard construction hours
- We will undertake regular noise and vibration monitoring to ensure work is carried out within Project approvals.

Equipment and machinery

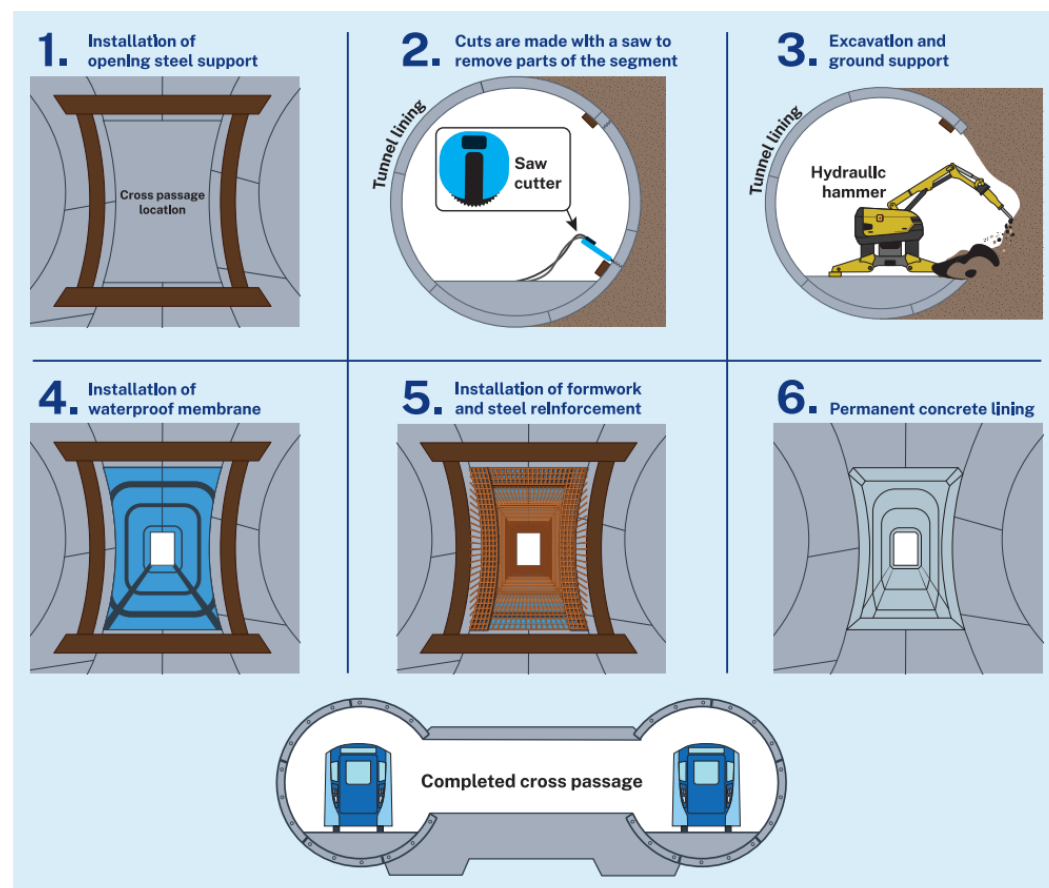
- Includes but is not limited to excavators, rock hammers, drills, saws, elevated work platform, concrete trucks and equipment.

Working hours will be reduced over the holiday period. No work will take place on public holidays including New Years Day and Australia Day.

Cross passage work location



Cross passage excavation process



Contact us



24-hour Project Infoline **1800 612 173**



MetroTunnelsJCGJV@transport.nsw.gov.au



Sydney Metro West, PO Box K659, Haymarket, NSW 1240



Download **Sydney Metro Connect** from the App store or get it on Google Play.