

[REDACTED]
Senior Compliance Officer – Government Projects
Department of Planning, Housing and Infrastructure
Locked Bag 5022
PARRAMATTA NSW 2124

7 October 2025
Ref:201209-ER_DPHI-September 2025

Dear [REDACTED]

RE: Sydney Metro - Sydney Metro Western Sydney Airport SSI 10051 – ER Monthly Report for September 2025

Healthy Buildings International (HBI) submits this report to the Secretary in accordance with:

- Condition A32 (k) of the Sydney Metro Western Sydney Airport, SSI 10051 Approval (23 July 2021, and as modified 14 April 2022)

The attached summary details the key activities undertaken by Environmental Representatives for Sydney Metro Western Sydney Airport for September 2025.

Yours sincerely

[REDACTED]
Environmental Representative

Cc:

Sydney Metro: [REDACTED]

DPHI: Major Projects Portal

Enclosed:

SSTOM GW Monitoring Extension Round 3 - ER approval

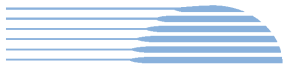


Table of Contents

1.	Advanced and Enabling Works (AEW)	3
2.	Stations, Systems, Trains, Operations and Maintenance Package (SSTOM)	6
3.	Statement of Limitations	19
4.	APPENDIX A – ER DOCUMENT ENDORSEMENT RECORDS.....	20

1. Advanced and Enabling Works (AEW)

Contract Package	Environmental Representative/s
Advanced and Enabling Works (AEW)	
EPL: None	
Key Construction Activities During the Period	
<ul style="list-style-type: none"> ▪ St Marys Footbridge (FSM): <ul style="list-style-type: none"> ○ Deflection wall backfill works continued ○ Deck pours over the rail lines have been completed ○ Laydown area 1 had material imported and stored ○ The area behind the Harris St carpark had DGB applied to it to increase ground stabilisation 	
Key Construction Activities Look Ahead	
<p>Construction activities planned for the upcoming period for the Advanced Enabling Works (AEW) comprise of:</p> <ul style="list-style-type: none"> ▪ St Marys Footbridge: <ul style="list-style-type: none"> ○ Patching and waterproofing will continue ○ Concrete pours will continue on both platforms ○ Minor concrete pours will continue on the deck of the overpass ○ The area behind the Harris St car park will near completion 	
ER Inspections	
<p>There was (1) inspection of the St Marys Station Footbridge works conducted on 10/09/25 by the ER (AG).</p> <p>Key points/issues raised during the inspections were as follows:</p> <ul style="list-style-type: none"> ▪ The site was still well managed especially during the rain ▪ Drip bunding of equipment at the compound and behind the commuter carpark is required, especially during the rain ▪ A small hydrocarbon spill was observed in the compound. It is noted that LOR immediately took actions to remedy this during the inspection ▪ Litter was observed across the site (compound and platforms). 	

Photos



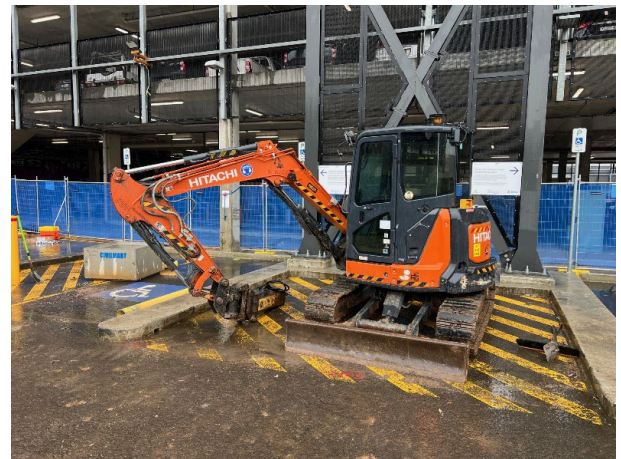
Compound: The refuelling area was looking tidy with no signs of contamination.



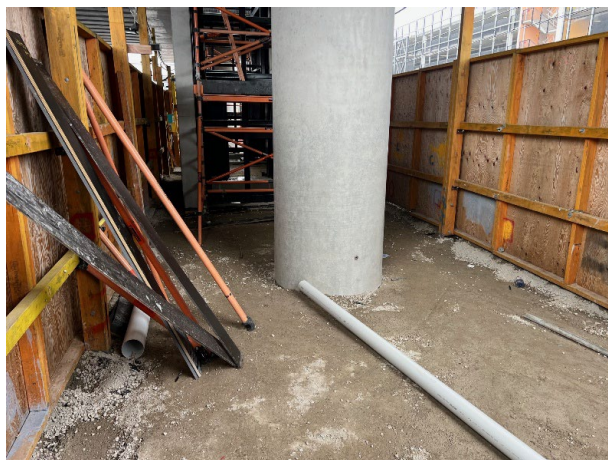
Compound: A small oil sheen was observed near the main entry / exit gate.



Compound: It was noted that the sediment adjacent to the deflection wall should be cleaned up.



Harris St Carpark: The small excavator parked adjacent to the works should have controls installed if the hydraulic hoses are disconnected.



Platforms: Both platforms have been backfilled with stabilised material.



Laydown area 1: The haul area has some areas of thinning stabilisation / exposed clay.

Endorsed Document/s
<p>The following documents were endorsed/approved by the ER:</p> <ul style="list-style-type: none"> ▪ None <p>The following documents were provided for information or reviewed with comments provided to Sydney Metro:</p> <ul style="list-style-type: none"> ▪ Out of Hours Works form – MW9 – MW10 (Rev 2) ▪ Out of Hours Works form – MW10, WE11, MW11, WE123, MW12, WE13 & MW 13 (Rev 1) ▪ Out of Hours Works form – MW13 – MW17 (Rev 1)
Complaints / Incidents / Non-compliance
<p>No non-compliances were reported to the ER during the period.</p> <p>One (1) incident was reported to the ER during the period.</p> <ul style="list-style-type: none"> ▪ 10/09/25, A small oil sheen was observed during the ER site inspection. The spill kit was deployed and used materials disposed of. <p>No complaints were reported to the ER during the period.</p>
Audits (specific to packages reported in this report)
<ul style="list-style-type: none"> ▪ None
Looking Forward – Core Focus Areas
<p>The rain event during September 2025 was well handled with controls deployed prior to predicted rain, resulting in no rain related incidents. The project has not received any complaints, which reflects the high level of compliance especially during out of hours works.</p> <p>The project is still handling excavated and imported material, controls have been upgraded and the environmental risk with this activity is well managed.</p> <p>ER Closing Comments:</p> <p>Over the coming month, the ER will continue to conduct inspections and request evidence from the contractor regarding key management measures. Main issues monitored include:</p> <ul style="list-style-type: none"> ▪ Mud tracking` ▪ Out of hours noise ▪ Water management ▪ Concrete management ▪ Interaction with members of the community

2. Stations, Systems, Trains, Operations and Maintenance Package (SSTOM)

Contract Package	Environmental Representative/s
Stations, Systems, Trains, Operations and Maintenance Package (SSTOM). Contractor Parklife Metro (PLM)	
EPL: 21807	
Key Construction Activities During the Period	
<p>Stations</p> <ul style="list-style-type: none"> ▪ St Mary's Station (STM): <ul style="list-style-type: none"> ○ Station box wall and suspended slabs using Fibre Reinforced Polymer (FRP) ○ Pre-cast beam and plank installation ○ Blockworks ○ Tunnel fit out (cable trays, brackets and sleepers) ○ Linewide deliveries to the tunnel ▪ Orchard Hills Station (OHE): <ul style="list-style-type: none"> ○ Station box FRP ○ Concrete batch plant operations ○ Blockworks ○ Delivery of construction materials to the laydown areas (particularly at OHE North) ○ Kent Road internal upgrade works (on hold) – batters shotcreted ○ Tunnel fit-out cable tray and sleepers ○ Concrete stockpiling in preparation for crushing for reuse as road base ▪ Luddenham Station (LUD): <ul style="list-style-type: none"> ○ Detailed excavation and concrete works ○ Piling pad construction for sheet piling ○ FRP above-ground works ○ In-ground electrical conduit installation ○ Precinct works ▪ Bradfield Station (BRD) (Formerly Aerotropolis Core AEC): <ul style="list-style-type: none"> ○ Station box FRP ○ Interface management is ongoing with Western Parkland City Authority (WPCA) Contractor – WEM Civil ○ Beam and plank installation ○ Construction of the permanent car park ○ Permanent batter works on the eastern boundary ○ Concrete pumping in the tunnel for line wide works ○ Station road east and south works ○ Four escalators delivered and installed – between the platform and concourse <p>Linewide</p> <ul style="list-style-type: none"> ▪ Stabling and Maintenance Facility (SMF): 	

- Earthworks for Stockpile PS-102 and utilities
- Sub-station construction is ongoing
- Delivery of materials
- Permanent drainage works and the construction of the permanent basins are ongoing
- Combined service route (CSR) works
- Construction of the Maintenance and Administration (M&A) and Operations Control Centre (OCC) buildings is ongoing (structural steel and roof installation)
- Topsoil amelioration works
- Removal of temporary swales commenced
- Claremont Meadows Services Facility (CMSF):
 - Ventilation systems: all four fans are operating and monitoring indicates that noise is below predicted levels
 - Tunnel fit-out works – cable trays/brackets and sleepers being delivered via the shaft
 - Concrete pumping to the tunnel for line wide works
- Bringelly Services Facility (BSF):
 - Track installation works. Rail in tunnels with concrete and sleepers being installed via the shaft
 - Power connection works completed – site is on mains power and generators have been removed
- Lansdowne Rd to Patons Lane:
 - CSR works
 - Sewage service installation work
 - General services trough (GST) installation
 - Track construction works ongoing for standard hours and Out of Hours Works (OOHW)
- Luddenham Road to M12:
 - Sleeper installation
 - Track slab defect rectification works
 - Works on the viaduct, waterproofing and concrete pours heading north
- M12 to Elisabeth Drive:
 - CSR/GST work on hold until hi-rail pad is installed across the alignment
 - Concrete Placement Unit (CPU) testing
- Project wide**
 - Weed spraying is ongoing where required
 - Rail pulling into the Southern down tunnel and adjacent to SMF
 - Tunnel fit out including cable trays/brackets, sleepers and concrete pours

Key Construction Activities Look Ahead


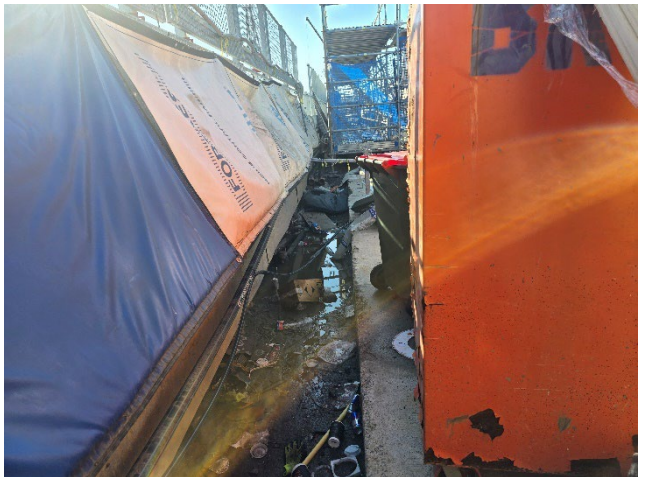
Stations

- St Mary's Station (STM):
 - Station box wall and suspended slabs FRP
 - Pre-cast beam and plank installation
 - Tunnel fit out (cable trays and brackets)
- Orchard Hills Station (OHE):
 - Station box FRP
 - Concrete batch plant operations
 - Delivery of construction materials to the laydown areas (particularly at OHE North)
 - Kent Road internal upgrade works
 - Tunnel fit-out cable tray (MEP) and sleeper install works
 - Concrete crushing
 - Sewer main construction (likely in September)
 - An additional parking area was added to the overflow car park
- Luddenham Station (LUD):
 - Detailed excavation and concrete works
 - FRP above-ground works
 - In-ground electrical conduit installation
 - Sheet piling on the western side of the station
 - Precinct works
 - Earthworks to level ground between Luddenham Rd and the station
 - Permanent car park works
- Bradfield Station (BRD) (previously Aerotropolis Core - AEC):
 - Permanent batter installation on the Eastern boundary
 - Install permanent stormwater drainage
 - Permanent car park works
 - LV Site access through WPCA and handover of the previous site shed area to WPCA
 - Station box FRP
 - Interface management is ongoing with WPCA Contractor – WEM Civil
 - Beam lifts and plank installation
 - Construction of the permanent car park
 - Decommission old surface water basin
 - Removal of topsoil earth berm on eastern boundary to allow for geotechnically stable fill replacement

Linewide

- Stabling and Maintenance Facility (SMF)
 - Earthworks scope is ongoing for the stockpile PS-102 and the surface area of the SMF for utility construction
 - Sub-station construction- transformer installation works
 - Substation joint bay works/service installation on Patons Lane
 - Delivery of materials

- Permanent drainage works are ongoing
- CSR works
- Construction of the Maintenance and Administration (M&A) and Operations Control Centre (OCC) buildings is ongoing (structural steel and roof installation)
- Topsoil amelioration works
- Removal of temporary swales
- Claremont Meadows Services Facility (CMSF)
 - All four vent fans to be commissioned and operational 24/7
 - Site setup
 - Ventilation systems: Two of four fans are operating. Noise levels are below predicted levels
 - Tunnel fit-out works
 - Delivery of sleepers to the site
- Bringelly Services Facility (BSF):
 - Sleeper deliveries to the tunnel via the shaft
 - No additional extension to the hardstand to be installed as the current hardstand/DGB with rumble grids is working through wet events.
- Lansdowne Rd to Patons Lane:
 - ULX piling works
 - CSR works
 - Sewage service installation work
 - GST installation
 - Track construction works ongoing for standard hours and OOHW
- Luddenham Road to M12:
 - CSR works
 - Sleeper installation
 - Track slab defect rectification works
 - Works on the viaduct, waterproofing heading north
 - OOHW
- M12 to Elisabeth Drive:
 - CSR/GST work on hold until rail site possession is completed
 - Rail sleeper installation
 - CPU (Concrete Placement Unit) works
- Project wide**
 - Weed spraying is ongoing across the alignment
 - Rail pulling into the Southern down tunnel
 - Tunnel fit out including cable trays/brackets, sleepers and concrete pours

ER Inspections	
<p>Five ER inspections were conducted during this period, with the Linewide portions inspected on 02, 16 and 30 September 2025 and the Stations inspected on 09 and 23 September 2025. Key points/issues raised during the inspections were as follows:</p> <ul style="list-style-type: none"> STM, ORH, BRD, CMSF (other sites to a lesser degree) – Housekeeping (rubbish) continued to be a discussion point at all inspections, although housekeeping in general had improved since August. Areas of focus included new laydown areas, car park/site entry and smoking areas. STM, ORH, BSF – Ongoing risks of limited site car parking and minimising impacts from on-street parking continued to be discussed with PLM. ORH – chemical storage areas (including appropriate bunding) and spill kits to be maintained Linewide – Deliveries to vegetated (grass) stabilised areas were noted; ESC risks were minimal; however, re-stabilisation of areas would be required Weed maintenance was ongoing, noting that minor growth of continued fireweed and sticky nightshade across the alignment. Sitewide - Minor ESC maintenance to reinstate and maintain ESC after rain events and minor improvements suggested to PLM. Sitewide – maintenance of spill kits and suitable placement of spill kits in work areas was discussed Sitewide – banner mesh replacement will be occurring over the upcoming months with updated NSW branding where banner mesh is damaged Sitewide – increased dust mitigation measures were discussed, noting some areas had significant bull dust that had the potential to mobilise off-site 	
Photos	
Stations	
	
<p>STM – Blockwork construction in the box.</p>	<p>STM – Rubbish adjacent to the station box was cleaned post-inspection.</p>



OHE – View to the north from the office. The batter had polymer applied, and some vegetation growth assisted in ESC. Works to the north continued above ground. Noted that some concrete removal was occurring with dust suppression.



OHE – Chemicals stored in laydown (some banded) and empty spill kits, spill kit in area required restocking.



OHE – additional ESC (bunds) are to be installed at the water truck refilling point at the northern basin.



OHE – Storage of chemicals (unbanded) and spill kit required restocking.



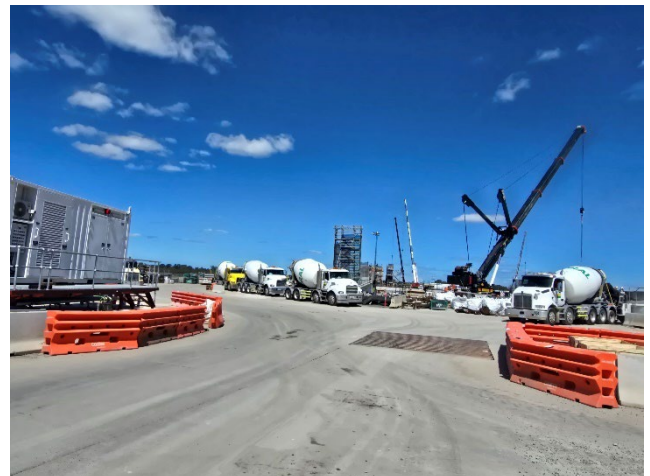
OHE – Dust was generated at the batch plant, PLM immediately organised a street sweeper to clean hard stands.



LUD – Construction of piling pad.



LUD – Construction station structural steel and steps.



BRD – Concrete pours to walls, floors and tunnel continued.



BRD – New car park construction continued.



BRD – Eastern boundary importing suitable material continued.

Linewide



CMSF – Car park litter remained an issue; however, litter levels were significantly lower than in previous inspections.



CMSF – Risk of bull dust being mobilised was discussed with PLM. A Water Cart was being sought for use at CMSF.



Lansdowne Rd to Patons Ln – Barriers installed to direct vehicles over rumble grid.



Lansdowne Rd to Patons Ln – Inspection of stockpile post rainfall with minimal erosion noted.



Patons Ln to water pipeline – Speed bumps installed to slow haul traffic.



Patons Ln to water pipeline – TPZ required to be reinstated after windy conditions.



SMF – removal of the “shark bite” sump commenced.



SMF – Noted compounds were generally tidy; however, chemicals required bunding and spill kits were not observed.



Water Pipeline to Luddenham Station – Exclusion zone to the water pipeline maintained.



Water Pipeline to Luddenham Station – Concrete pump to viaduct and laydown on stabilised areas.



Luddenham to M12 – Banner mesh to be replaced after high winds.



Luddenham to M12 – Haule road with speed bumps, laydown on stabilised area and rock-lined swale maintained.



M12 to Elizabeth Dr – Minor tracking past rumble grid. Asphalt maintained by street sweeper and not tracking to Elizabeth Drive was observed.



M12 to Elizabeth Dr – Swale crossing installed with pipes and Geofab. New tracks to be monitored for erosion.



BSF – ESC had been maintained and sediment had been removed from the stabilised exit pad.



BSF – Laydown was generally tidy. Significant vegetation growth on hydroseeded bunds.



BSF – Tunnel fit-out works continued.



BSF – Additional noise mitigation to reduce reflected noise from the ventilation fan.

Endorsed Document/s

The following documents were endorsed/approved by the ER:

- Extension to GW CMR reporting period from 60 days to 90 days

The following documents were provided for information or reviewed with comments provided to Sydney Metro:

- SM-WSA Monthly Complaints Report August 2025
- Weekly Complaints Report 1, 8, 15, 22 September 2025
- Surface Water Quality, Noise and Vibration and Air Quality Construction Monitoring Reports August 2025
- Noise & Vibration Management Plan and Monitoring Program annual review
- Flora and Fauna Management Plan annual review
- Waste Management Plan annual review
- Non-Aboriginal Heritage Management Plan annual review
- SMWSA SSTOM Submissions Board & Forecast – 3, 10, 16 September 2025

<ul style="list-style-type: none"> ▪ PLM environmental training schedule ▪ SSTOM – Project Plan Submission - Incident & Emergency Management Plan Rev 00.03 ▪ Claremont Meadows DNVIS Rev 1
Complaints / Incidents / Non-compliance
<p>There was one non-compliance with the Approval reported to the ER during this period: EVT-0002170 – Out of Hours works undertaken outside of the approval (EPL 21807) – the SMF team misunderstood the scope within an approved OOH permit for rail pulling at OHE. This resulted in a front-end loader rail pulling within the SMF outside of EPL-approved OOH works.</p> <p>Two incidents were reported to the ER during this period. EVT-0002169 – Spill at Bradfield ~200L of hydraulic oil was spilled from a mobile crane and rapidly cleaned (good practice and use of spill kit materials) EVT-0002172 – Minor spill at Orchard Hill Station hydraulic oil spill (~10 L) from a 40T Frana crane</p> <p>There were four non-project complaints and four SSTOM project complaints for the month:</p> <ul style="list-style-type: none"> ○ Complaint related to a truck driver driving aggressively (location north side of Sydney, not associated with WSA works) ○ One odour complaint at Bringelly (not attributed to SSTOM works) ○ One odour complaint at SMF (not attributed to SSTOM works). ER noted an organic odour on the day before this complaint, blowing from the NW direction onto the site. ○ One complaint regarding a water leak at Orchard Hills (not attributed to SSTOM works) ○ Concrete residue and dust near Samuel Marsden Road ○ Two complaints related to out-of-hours work (Raised as non-compliant EVT-002170) ○ One complaint regarding a near miss with a concrete truck in Orchard Hills
Audits (specific to packages reported in this report)
<p>None</p>
Looking Forward – Core Focus Areas
<p>The focus continues to be on the review and implementation of the CEMP and sub-plans.</p> <p>As littering and parking are ongoing issues, a review of the management processes is continuing with PLM to update the ER on proposed mitigation measures.</p> <p>Key measures to be focused next month:</p>



- Assess the implementation effectiveness of mitigation measures within OOH work zones.
- Continued implementation of ESCP and ECMs, and active maintenance by PLM of the controls
- Dust management.
- Confirm that ESC measures are active and effective in partially completed external zones, including stockpile areas and entry/exit points.
- Continued inspections of concrete washout areas and spill kits accessible near pour zones and pumping locations.
- Inspecting high-risk works (i.e. concrete crushing, sheet piling).

ER Closing Comments: Actions raised at the ER inspections are being progressively closed out. The ER notes that the site works are being reduced and areas are stabilised to reduce erosion/dust risks. Risks from these areas will be lower as more areas are stabilised.

3. Statement of Limitations

Healthy Buildings International (HBI) has prepared this report in accordance with the requirements of Condition A32 (k) of the Sydney Metro Western Sydney Airport, Concept and Stage 1 SSI 10051 Approval (23 July 2021). The report is for the sole purposes of the Department of Planning, Housing and Infrastructure (DPHI) and Sydney Metro. It has been prepared based on generally accepted practices and standards at the time it was prepared. No other warranty, expressed or implied, is made as to the professional advice included in this Report. This report did not assess any aspects relating to safety.

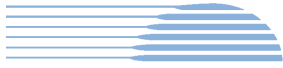
Where the Report indicates that information has been provided to HBI by third parties, HBI assumes no liability for any inaccuracies in or omissions to that information.

This Report was prepared based on the conditions encountered and information reviewed at this time. HBI disclaims responsibility for any changes that may have occurred after this time.

This Report should be read in full. No responsibility is accepted for use of any part of this report in any other context or for any other purpose or by third parties. This Report does not purport to give legal advice. Legal advice can only be given by qualified legal practitioners.

Except as required by law, no third party may use or rely on this Report unless otherwise agreed by HBI in writing. Except as specifically stated in this section, HBI does not authorise the use or findings of this Report by any third party.

To the extent permitted by law, HBI expressly disclaims and excludes liability for any loss, damage, cost or expenses suffered by any third party relating to or resulting from the use of, or reliance on, any information contained in this Report. HBI does not admit that any action, liability or claim may exist or be available to any third party.



4. APPENDIX A – ER DOCUMENT ENDORSEMENT RECORDS

- SSTOM GW Monitoring Extension Round 3 - ER endorsed document under SSI 10051

Date: 29 September 2025

Subject: SSTOM - Groundwater Monitoring Round-3 Report Submission Date Extension for Environmental Representative Approval

This document discusses a proposed extension of Groundwater Monitoring Report (Round 3) submission date under the Groundwater Monitoring Program (GWMonProg). Following discussion with the Environmental Representative (ER), this document has been prepared for ER review and approval under CoA A32(j) and C21 of SSI-10051 Sydney Metro - Western Sydney Airport.

Background

PLM have completed and reported on two monitoring rounds (Round-1 and Round-2):

- Biannual Groundwater Construction Monitoring Report – December 2023 to August 2024 Rev02 - SMWSASSM-PLD-SWD-SW000-WA-RPT-000003
- Biannual Groundwater Construction Monitoring Report – September 2024 to November 2024 - SMWSASSM-PLD-SWD-SW000-WA-RPT-000004

PLM have also completed groundwater monitoring field activities, including installation of new wells at the locations previously not accessible. The new wells have been installed as recommended within the previous monitoring report (Round-2).

Groundwater Monitoring Report Round-3

The Round-3 report will be due on September 30, 2025, as SSTOM – Groundwater Monitoring Program (Section 8.5.1) (SMWSASSM-PLD-1NL-PC-PLN-000022) requires that the monitoring report be submitted to DPHI within 60 days of the reporting period. However, due to some unanticipated complexities associated with data assessment, quality assurance, quality control and review process, the finalisation of the Round 3 monitoring report is taking longer than anticipated to complete.

Proposed Groundwater Monitoring Report -3 Submission Date

Considering the above PLM requests to extend the submission date of the Groundwater Monitoring Report (Round-3) by 30 days. The proposed DPHI submission would be 30 October 2025.

PLM is also considering reviewing the SSTOM – Groundwater Monitoring Program to extend the submission period by 90 days for future monitoring rounds and associated reports.

Requested by

Name	[REDACTED]		
Signature	[REDACTED]	Date	29/09/2025
Comments			

Environmental Representative Endorsement / Approval

Name	[REDACTED]		
Signature	[REDACTED]	Date	30/09/2025
Comments	Conditional approval noting that the GWQMP must be updated by PLM for a 90 day reporting period to permit satisfactory data analysis and review.		

Approval is a one-off minor amendment of the GWQMP under SSI10051 CoA A32(j)