

# Temporary Transport Management Plan

Sydenham to Bankstown Line  
shutdown

August 2025 [transport.nsw.gov.au](https://transport.nsw.gov.au)

# Table of Contents

## Contents

<b>Executive Summary</b> .....	<b>3</b>
<b>Project Update</b> .....	<b>4</b>
Stand-alone Rail Line.....	4
Southwest Metro conversion .....	4
<b>Transport Plan</b> .....	<b>5</b>
Key features of the Temporary Transport Plan .....	5
<b>Network Infrastructure</b> .....	<b>7</b>
Bus Stop and Shelters .....	7
Existing Facilities at Interchange Stations.....	7
<b>Network Plan</b> .....	<b>8</b>
Road Network Management.....	8
Road Network Performance Monitoring.....	8
<b>Walking and Cycling</b> .....	<b>9</b>
Sydenham to Bankstown Walking and Cycling Strategy .....	9
Walking and Cycling management during the Southwest Link Operation .....	9
<b>Customer Engagement and Information</b> .....	<b>10</b>
Timetable development.....	10
Stakeholder Engagement .....	10
Customer Information.....	11
Wayfinding and Customer service.....	12
<b>Appendices</b> .....	<b>13</b>
Appendix A – Sydenham to Bankstown – Southwest Link – Train replacement buses .....	14
Appendix B - Temporary Bus Stops .....	20
Appendix C - Temporary Bus Stop Infrastructure Assessment.....	22
Appendix D – Temporary Transport Plan Bus Routes .....	24
Appendix E – Active Transport – Cycling Map .....	34

## Executive Summary

The Sydney Metro City & Southwest commenced the final upgrade component of all 11 stations between Sydenham and Bankstown to convert the T3 Bankstown Line to Metro operations in September 2024. This upgrade includes various construction activities that require the temporary planned shutdown of all of the rail line.

Stations between Marrickville and Bankstown, along the T3 Bankstown Line, closed on 30 September 2024, initially for approximately one year to complete the final stage of Sydney Metro upgrade works on the T3 Bankstown Line. The final stage of the Sydney Metro will now be completed in 2026 due to the ongoing impacts of industrial action. The complexity of this project has been compounded by more than 130 days of work on the project that have been impacted by industrial action and its subsequent effects, placing increasing pressure on the construction and testing programs. Southwest Link bus operations will continue operations for this period between Sydenham and Bankstown. Southwest Link is a dedicated, high frequency bus service between Sydenham and Bankstown train stations to ensure passengers can continue to travel during the final Metro conversion of the T3 Bankstown Line.

# Project Update

## Stand-alone Rail Line

The T3 Bankstown Line is being converted to Metro standards between Sydenham and Bankstown with all stations to be fully accessible with lifts and level access between platforms and trains.

Sydney Metro City & Southwest will replace the existing Sydney Trains railway between Sydenham and Bankstown. The T3 Line to the west of Bankstown will continue to be operated by Sydney Trains, serving stations between Liverpool, Lidcombe and Bankstown.

## Southwest Metro conversion

This conversion will address one of Sydney's biggest rail bottlenecks, providing more reliable journeys for customers all across Sydney, as well as increasing accessibility at all 11 stations.

The update includes:

- Air-conditioned metro trains and increased train frequency in AM and PM peak services – a train at least every four minutes at each station, improved CCTV surveillance, platform screen doors, platforms level with train floors, minimal gaps between platforms and trains.
- Improved station interchange facilities at key stations.
- All trains stopping at all local stations – no waiting for the right train.
- Safe and efficient connections during the peak and non-peak periods between key precincts along the T3 Bankstown Line.
- New, direct and fast services to Martin Place, Barangaroo, North Sydney, Chatswood and Macquarie Park.
- Interchanges to other rail services at Sydenham, Central and Martin Place.
- No need for a timetable – you'll just turn up and go.
- More job opportunities with faster, more frequent and direct access to key employment centres, including North Sydney, Chatswood, Macquarie Park and the northwest.
- Better access to education, with fast, more frequent and direct connections.
- All stations fully accessible, with lifts and level access between trains and platforms.
- Fast, safe and reliable – a new generation of 21st century Metro trains.

## Transport Plan

The shutdown commenced in September 2024 for an initial period of approximately 12 months. It is expected that the extension will continue in 2026 with **stations between Marrickville and Punchbowl continue to be closed**. Southwest Link services will replace trains between Sydenham and Bankstown as shown below in Figure 2. Southwest Link is a dedicated, high frequency bus service between Sydenham and Bankstown train stations to ensure passengers can continue to travel during the final metro conversion of the T3 Bankstown Line.

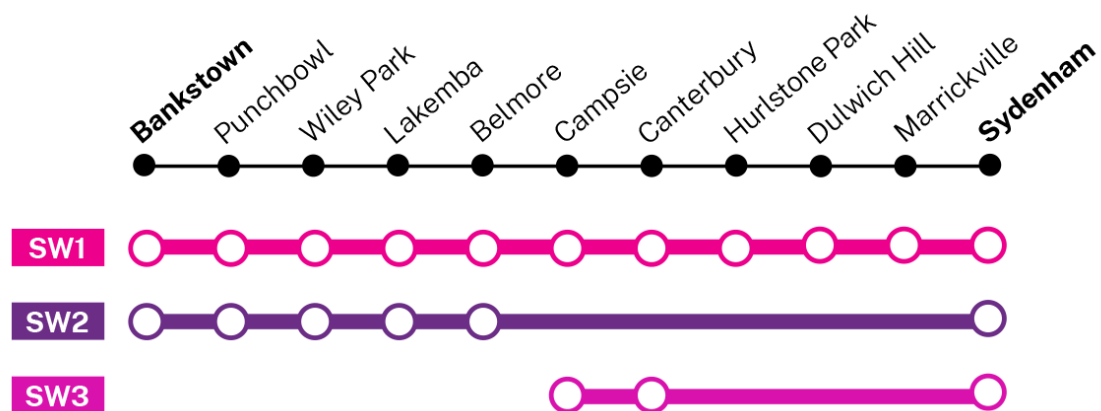


Figure 2: Replacement and alternative services for the extended shutdown

### Key features of the Temporary Transport Plan

- Frequent, all stops and limited stops bus services connecting closed stations along the T3 Bankstown Line. (Further details in **Appendix A**).
- Buses utilised for both shutdowns will be 12.5 metre (m) low-floor buses. All bus stops for the Southwest Link operations will have TGSi (Tactile Ground Surface Indicators) and B-Poles installed. Bus marshals will also be available at key locations during the busiest parts of the day to assist customers.
- Bus stop locations are included in **Appendix B** and Bus route maps included in **Appendix D**.
- Temporary network infrastructure such as shelters **Appendix C**.

## Layover and standby facilities

Dedicated layover facilities that require additional parking removal have been approved by the Local Traffic Committees within the relevant Councils for the duration of the shutdown.

- Bus interchange located to the south of Bankstown Station
- Driver facilities located at 1 Sydney Steel Road, Sydenham (No parking impacts to community)
- Standby location provided on Lower Railway Parade, Sydenham.

No formal park and ride areas have been impacted as a result of the extended shutdown, where Taxi Zones have been impacted, additional kerbside changes have been provided to relocate taxi zones.

## Increase in customer volumes at other locations

Each closed station has a Local Area Map which captures transport options available within the precinct of the station. The Local Area Map includes information on Southwest Link buses, local buses, walking and cycling options. For stations that remain open, such as Sydenham and Bankstown, a Customer Management Plan will show how an increase in the number of customers at the station will be managed. The opening of the Metro in August 2024 from Sydenham to the City further alleviated the pressure on existing Sydney Trains Stations as well as Inner West Light Rail services, by being an attractive public transport option to access the city.

## Special events

Special events such as the Lakemba nights and other events that directly affect Southwest Link bus route paths will have alternate bus routes arranged with clear communication to customers on temporary bus stop changes. Additional services will also be implemented around events such as New Years Eve where timetables will be altered to meet the demands. In addition to these strategies, extra standby buses will also be utilised to meet spikes in demand during major sporting events to further bolster the bus operation.

## Other events that may impact the rail shutdown arrangements

It is anticipated that Sydney Metro upgrades will require special construction activities including bridge works along the alignment. Impacts by these works to key bus stops and/or routes have been identified with alternate locations and route paths to be utilised for the duration of the works. Parking impacts as a result of the relocating of stops have also been identified and would be managed through the appropriate Council engagement process.

Other events potentially impacting bus routes and/or stops will be flagged from existing TfNSW avenues not limited to the Road Occupation Licence (ROL) process, Bus Approval process as well as frequent meetings held between Sydney Metro, TfNSW and Local Councils. These potential impacts on the bus operations will be assessed and addressed accordingly.

# Network Infrastructure

## Bus Stop and Shelters

To ensure bus services' safe and efficient operation, layover and temporary bus space details have been provided to the relevant Council's Local Traffic Committees Meetings. The documentation was further supported by a 4-week consultation period with flyers distributed on the temporary kerbside changes to be implemented. Transport is working with relevant Councils to extend the temporary kerbside changes to include the extended period Southwest Link services are required to operate till in 2026.

The location of bus stops and facilities in place during the shutdown period is outlined in **Appendix B**.

Temporary Bus Stops will utilise existing awnings, or additional cover (marquees) will be provided.

## Existing Facilities at Interchange Stations

During Southwest Link, key interchange stations are Sydenham and Bankstown. All stations have extensive facilities including lifts and wheelchair accessibility.

- Sydenham Station: Lifts and wheelchair accessibility. Complete stop information (<https://transportnsw.info/stop?q=10101326#/>)
- Bankstown Station: Lifts and wheelchair accessibility. Complete stop information (<https://transportnsw.info/stop?q=10101401#/>)

# Network Plan

## Road Network Management

Key corridors, including Illawarra Road, Canterbury Road, The Boulevarde, Sydenham Road and intersections along each route, have been assessed to determine any temporary changes required to allow buses to operate while maintaining traffic flow for other road users.

The temporary bus replacement routes have been planned to allow 'Limited Stop' bus routes to use main road corridors (e.g. Canterbury Road). In contrast, the 'All Stops' bus route will predominantly use local roads to access stations. Refer to Appendix C for further details on the bus replacement routes. This reduces the impact on the road network and gives customers greater flexibility during the planned shutdown.

To reduce the impact on the local community Sydney Metro and Customer Journey Planning (TfNSW) are working together to mitigate any impacts expected from construction activities. Ongoing meetings in the form of a Traffic Coordination Group and a Traffic & Transport Liaison Group held fortnightly and monthly, respectively, form the collaborative approach to mitigating the impact on the community and ensuring Metro Construction works are carried out as indicated. These meetings ensure the collaboration from key representatives spanning from Metro construction teams, Local Council as well as Transport network management teams.

## Road Network Performance Monitoring

As part of the regular BAU process of managing the road network, rostered crews across the AM/PM peak continue to monitor and assist with the clearance of any incidents and manage unusual congestion on key replacement bus corridors. Dedicated Southwest Link operational staff continue to monitor the operations at stops and along the alignment to flag any issues with the Transport Management Centre as needed at all times of the operation.



# Walking and Cycling

## Sydenham to Bankstown Walking and Cycling Strategy

Sydney Metro developed the Sydenham to Bankstown Walking and Cycling Strategy, to identify opportunities and works to connect stations with the surrounding communities, by connecting to or enhancing existing pedestrian and cyclist paths.

The strategy aims to encourage walking and cycling as a first/last mile transport mode and to expand the functional metro station catchment areas to maximise the percentage of customers who access metro stations through sustainable transport modes. The walking and cycling strategy also identifies opportunities and works to improve east-west pedestrian and cyclist facilities between Sydenham and Bankstown.

As part of the trip planning, walking and cycling options are provided on the Transportnsw.info website as well as replacement bus services, making it easy for customers to plan their walking or cycling route. The Transportnsw.info website also provides information for customers on facilities available at each station, including cycle parking.

## Walking and Cycling management during the Southwest Link Operation

Active Transport is a key component to the Southwest link Temporary Transport Plan. Transport for NSW has embedded a number of initiatives into the plan to make it easier and safer for people to walk or ride to metro stations, train stations and Southwest Link bus stops to benefit communities affected by the T3 Bankstown Line shutdown.

The initiatives to encourage walking and riding include bike routes connecting to stations on the T2 Inner West Line at Ashfield, Stanmore and Newtown, T4 Illawarra Line at Tempe and M1 Metro North West & Bankstown Line at Sydenham. The introduction of speed zone reductions will be implemented:

- along key travel routes;
- around Southwest Link bus stops;
- around the installation of additional bike parking and
- around share bike parking at selected stations.

These initiatives will be accompanied by activations to provide the community increased access to bikes, bike tune-ups which helps boost rider confidence. Since the start of the Southwest Link project, Sydenham Station has seen a dramatic rise in bike parking usage, with private bike usage up by 508% and share bike usage surging by 580%.

For further details, please see the Active Transport - Cycling Map in **Appendix E**

# Customer Engagement and Information

## Timetable development

The methodology for developing the rail replacement bus timetables for the Southwest Link involved several key steps. First, passenger tap-on and tap-off data was collected for all affected stations between Bankstown and Sydenham. This data was then cleaned and transformed to calculate bus requirements, informed by lessons learned from previous bus operations. Three different periods were considered to meet the demands:

- School-term weekdays
- School holiday weekdays
- Weekends

An origin and destination matrix was created for the available bus routes, reflecting passenger demand during these periods. This matrix was combined with the transformed data to determine the number of buses required for each period. The matrix shows the likelihood of passengers using specific bus routes, with appropriate assumptions based on historical data.

Interchange stations were assigned to Bankstown and Sydenham. Bankstown will have a shuttle train service between Lidcombe and Bankstown, while Sydenham will have Metro services traveling towards the city. The transformation process allocates the appropriate interchange station. For example, a passenger traveling from Lakemba to the city was transformed into a journey from Lakemba to Sydenham, based on the bus operation timetable.

The below table outlines the Bus OD matrix that was used to join with the transformed data.

Destination Origin	Banktown Station	Punchbowl Station	Wiley Park Station	Lakemba Station	Belmore Station	Campsie Station	Canterbury Station	Hurlstone Park Station	Dulwich Hill Station	Marrickville Station	Sydenham Station
Banktown Station	None	SW2	SW2	SW2	SW2	SW1	SW1	SW1	SW1	SW1	SW2
Punchbowl Station	SW2	None	SW2	SW2	SW2	SW1	SW1	SW1	SW1	SW1	SW2
Wiley Park Station	SW2	SW2	None	SW2	SW2	SW1	SW1	SW1	SW1	SW1	SW2
Lakemba Station	SW2	SW2	SW2	None	SW2	SW1	SW1	SW1	SW1	SW1	SW2
Belmore Station	SW2	SW2	SW2	SW2	None	SW1	SW1	SW1	SW1	SW1	SW2
Campsie Station	SW1	SW1	SW1	SW1	SW1	None	SW3	SW1	SW1	SW1	SW3
Canterbury Station	SW1	SW1	SW1	SW1	SW1	SW3	None	SW1	SW1	SW1	SW3
Hurlstone Park Station	SW1	SW1	SW1	SW1	SW1	SW1	SW1	None	SW1	SW1	SW1
Dulwich Hill Station	SW1	SW1	SW1	SW1	SW1	SW1	SW1	SW1	None	SW1	SW1
Marrickville Station	SW1	SW1	SW1	SW1	SW1	SW1	SW1	SW1	SW1	None	SW1
Sydenham Station	SW2	SW2	SW2	SW2	SW2	SW3	SW3	SW1	SW1	SW1	None

Figure 4: Origin-destination matrix for the extended shutdown

## Stakeholder Engagement

Community consultation on parking changes was completed in 2025 as a part of Local Traffic Committee requirements. Note there will unlikely be any changes to the current parking arrangements.

The parking changes consultation consisted of the following:

- Letterbox drop of notifications to businesses and residents close to the three station locations:
- A 24/7 phone number 1800 131 786 to receive feedback, answer any questions and provide the community with more information.
- A dedicated 'Have your say' webpage

A dedicated Southwest Link communications and engagement team will be in place until the end of the project to support impacted stakeholders including passengers, schools, businesses, ministers, electorate offices. The team will work in partnership with Sydney Metro to ensure a seamless approach

## Customer Information

A mix of channels is being used to make customers aware of the shutdown and the alternative transport options including:

At station and on mode:

- On the Ground Staff
- Station Posters
- Digital Information Screens
- Guard Announcements
- Trackwork Flyer (Appendix A).

Websites:

- [transportnsw.info](https://transportnsw.info)
- [transportnsw.info/southwest-link](https://transportnsw.info/southwest-link)
- [sydneymetro.info](https://sydneymetro.info)

Apps:

- Opal Travel App
- Third party Apps (e.g. Tripview, NextThere)

Social Media:

- Twitter
- Facebook

Stakeholder Communication:

- Community notifications
- Extensive engagement with schools, universities, ATAC and other key groups.
- Stakeholder emails, meetings, briefings, local business doorknocks
- Dedicated email address
- Multi-lingual customer brochures
- Newsletter content
- Contact Centre

## Wayfinding and Customer service

To assist customers with wayfinding and navigating their way to rail replacement buses and alternative train services, a comprehensive wayfinding and customer service strategy has been developed. This includes:

- Wayfinding signage at stations and bus stops
- Trackwork information guides at stations
- Guard announcements at open stations
- Bus marshals at key locations

# Appendices

Appendix A – Sydenham to Bankstown – Southwest Link – Train replacement buses

Appendix B – Temporary Bus Stops

Appendix C – Temporary Bus Stops Infrastructure Assessment

Appendix D – Temporary Transport Plan Bus Routes

Appendix E – Active Transport – Cycling Map

## Appendix A - Sydenham to Bankstown - Southwest Link - Train replacement buses



Sydenham to Bankstown

Making way for Sydney Metro

# Southwest Link update

June 2025



Southwest Link buses provide a free, high frequency service between Sydenham and Bankstown, helping you get to where you need to go.

We're keeping you up-to-date with the progress of the Southwest Metro extension and anything you need to know about getting around using Southwest Link.

## Read on for information about: Riding to Sydenham Station

- More people are riding to Sydenham Station – here's why
- Sydney Metro reaches major milestone
- T6 Line trains resume from 30 June 2025
- Emergency Roadwork
- Passenger count – Bluetooth technology trial
- Tips for a safe and comfortable journey

## Southwest Link bus service frequency



**Every 2 to 4 minutes**  
during peak periods



**At least every 10 minutes**  
across most of the day



**At least every 15 minutes**  
late at night





# Southwest Link update

June 2025

## More people are riding to Sydenham Station – here's why

If it feels like there are more bikes around Sydenham lately, you're right. Since the metro opened in October last year, there's been a steady rise in the number of people riding to the station.

### Bike routes to the station

Part of this shift is the network of Southwest Link bike routes. These routes are designed to make riding easier and safer, with better signage, traffic calming measures, and connections to local destinations – like Sydenham Station.

### It's easy to park

For people riding to Sydenham Station, there are few different options for bike parking. The secure bike shed is a popular choice, especially for regular commuters. It's free and easy to access **by linking your Opal card here**. Outdoor bike racks are also available with more recently added to meet growing demand.

### Grab a share bike and go

If you're using a share bike, a designated parking area has been set up on Sydenham Road to help keep things tidy and convenient.



### Keen to start riding?

The **Southwest Link Riding and Walking web page** has a range of resources, including route maps, tips, and stories from other local riders. You'll also find details about free bike skills courses, tune-ups, and events designed to help people get started or build confidence.

If you're thinking of riding once or twice a week, check out the **Hurlstone Park to Sydenham Station bike route**.

If you just want to give bike riding a go, we recommend the **Cooks River Shared Path** for a traffic-free local ride from Campsie to Tempe Station.

## Shared path upgrade and temporary detour – Marrickville Station

We're upgrading the shared path alongside Marrickville Station, between Riverdale Avenue and Victoria Road, making it wider and easier to use.

This section of the path is planned to close from late July for up to 12 weeks while the upgrade work takes place. During this time, please follow the short detour along Riverdale Avenue and Charlotte Avenue.

Signs will be in place ahead of the change to provide advance notice and show you where to go.







# Southwest Link update

June 2025

## Sydney Metro reaches major milestone

In an exciting step to convert the 130-year old former T3 Bankstown Line to modern metro standards, initial testing has begun on the newly upgraded tracks between Sydenham and Campsie.



### First Metro from Sydenham to Bankstown

(Watch this video)

The first test train successfully completed the 6.5 kilometre journey in the early hours of 3 April, under the control of an operator and with a team of rolling stock engineers monitoring progress on board. When the Metro extension opens in 2026, this journey will take just 11 minutes.

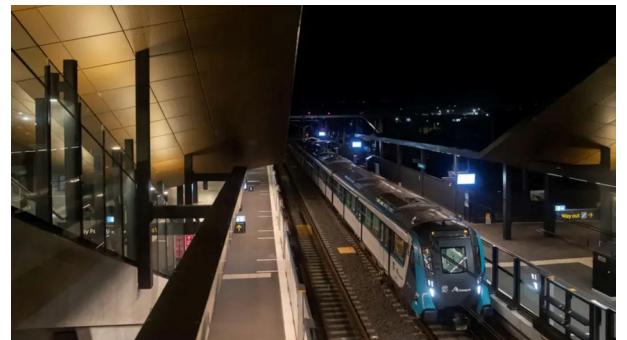
This marked the start of a detailed testing and commissioning program, with more than 6,500 hours of testing planned along the line between Sydenham and Bankstown.

Tests during this initial phase will see the train travel at speeds under 25km/h and include:

- 'Car-Car Clearance Test' to ensure all curves/turns are negotiated without issue
- Kinetic Envelope Testing to verify the safe distance between the sides of the train and the station platforms.
- Platform screen door interface checks and mechanical gap filler tests.
- Communications tests, including radio and static system checks.
- Testing a train under loaded conditions, where the train is filled with water containers to simulate a train filled with passengers.



Rolling stock engineers monitor testing progress on board the test train



The first Metro train completed its inaugural 6.5-kilometre journey from Sydenham to Campsie Station

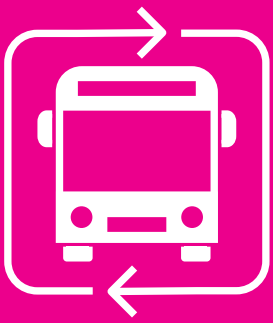


Metro testing

## Stay up-to-date about Metro trackwork

During testing, there will be several full or partial line closures of the M1 North West & Bankstown Line.

Passengers should check their preferred transport apps regularly or visit [transportnsw.info/trip](https://transportnsw.info/trip) before travelling.



# Southwest Link update

June 2025

## T6 Line trains resume from 30 June 2025

Train services on the T6 Line between Lidcombe & Bankstown will resume from 2am Sunday 30 June 2025 following the successful completion of 63 days of essential trackwork and upgrades by the Sydney Metro team.

Thank you for your understanding during this period, especially those who relied on replacement bus services to complete their journeys. We understand this is a disruptive time for passengers and we appreciate your patience.

To plan your journey on the T6 Line, please visit: [transportnsw.info/plan](https://transportnsw.info/plan) or check the **Opal** or other **travel apps**.

## Emergency Roadwork

Until 31 July 2025, there will be overnight road closures on parts of The Boulevard, Bridge Road, Peel Street and around the Bankstown bus interchange, due to road repairs.

Passengers are encouraged to check their travel apps and look for electronic message signs and signage at bus stops for any changes to bus services, including Southwest Link, during the night work.

For more information, please visit: [transport.nsw.gov.au/swl-repairs](https://transport.nsw.gov.au/swl-repairs)



## Passenger count – Bluetooth technology trial

Until 24 July, Transport is trialling new Bluetooth technology on Southwest Link buses to help improve the way we plan services.

The Bluetooth technology counts the number of passengers on a bus by recognising and counting the number of nearby Bluetooth signals. This enables Transport to better understand passenger demand levels and allocate services more efficiently.

For more information about the trial, please see our Frequently Asked Questions at: [transportnsw.info/southwest-link](https://transportnsw.info/southwest-link)



Sydenham to Bankstown

Making way for Sydney Metro

# Southwest Link update

June 2025

## Safety and comfort when travelling on Southwest Link

We know that the T3 conversion period is a disruptive time for our passengers, and at busy times there may be queues while you wait for your bus.

Here are some tips to help keep your journey, and the journey for those around you, safe and comfortable particularly during peak travel periods.

### At the bus stop and getting on and off the bus

- Join the queue at the bus stop to help keep the footpath clear and allow others to walk by safely.
- Keep your place in the queue and allow passengers to get off before you get on.
- Watch your step when getting on and off the bus.
- Board via the front door and ask the driver to lower the bus if you need assistance.
- When getting off the bus, use the doors that are nearest to you. If you require assistance, use the front door.

### On board the bus

- If seated, offer your seat to someone who needs it more than you. This includes people who are older, who have a disability or impaired mobility, who are pregnant or travelling with children.
- If seats aren't available, move to the back of the bus and hold onto the handrails and straps.

## Contact us

For enquiries, complaints or feedback, our team will remain available via the contact details below.



Project Infoline **131 500**



[southwestlink@transport.nsw.gov.au](mailto:southwestlink@transport.nsw.gov.au)

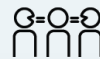


<https://transportnsw.info/southwest-link>



Sydney Metro

24-hour community info line: **1800 171 386**



**Interpreter service**

For languages other than English call **131 450**  
Arabic • Greek • Hindi • Mandarin • Vietnamese

بالرقم 131 450 لطلب خدمة الترجمة الشفهية للغات غير الإنجليزية اتصل

Για υπηρεσίες διερμηνείας σε άλλες γλώσσες εκτός από τα Αγγλικά καλέστε το **131 450**

अंग्रेज़ी के अतिरिक्त अन्य भाषाओं के लिए दुभाषिया सेवा पर कॉल करें **131 450**

获取英语以外的其他语言口译协助服务可以致电 **131 450**

Để có dịch vụ thông ngôn cho các ngôn ngữ khác tiếng Anh, gọi số **131 450**

## Appendix B - Temporary Bus Stops

### SW1-Inbound

Stop ID (TSN)	STATION- Transit Stop Name	Stop order
220080	BANKSTOWN STATION Stand J	1 (pick up only)
2196295	PUNCHBOWL STATION – The Boulevarde opp Broadway	2
2195110	WILEY PARK STATION - Wiley Park Station, The Boulevarde	3
2195118	LAKEMBA STATION – Lakemba Station, The Boulevarde	4
219226	BELMORE STATION – Bridge Rd opp Canterbury League Club	5
219414	CAMPSIE STATION – Beamish St opp ANZAC Mall	6
219321	CANTERBURY STATION – Canterbury Station, Canterbury Rd, Stand E	7
219312	HURLSTONE PARK STATION – Floss St opp Hurlstone Park Station	8
2204118	DULWICH HILL STATION – Ewart St at Murray Lane	9
2204102	MARRICKVILLE STATION – Illawarra Rd opp Marrickville Station	10
220450	SYDENHAM STATION -Sydenham Station, Railway Pde	11 (set down only)

### SW1-Outbound

Stop ID (TSN)	Transit Stop Name	Stop order
220439	SYDENHAM STATION -Sydenham Station, Railway Pde, Stand D	1 (pick up only)
2204101	MARRICKVILLE STATION – Marrickville Station, Illawarra Rd	2
220488	DULWICH HILL STATION – Ewart St at Wardell Rd	3
219311	HURLSTONE PARK STATION – Hurlstone Park Station, Floss St	4
2193105	CANTERBURY STATION – Canterbury Station, Canterbury Rd, Stand F	5
219461	CAMPSIE STATION – Campsie Station	6
219227	BELMORE STATION – Canterbury League Club, Bridge Rd	7
219527	LAKEMBA STATION – Lakemba Station, The Boulevarde, Stand E	8
2195109	WILEY PARK STATION – The Boulevarde opp Wiley Park Station	9
2196242	PUNCHBOWL STATION – The Boulevarde opp Punchbowl Station	10
220018	BANKSTOWN STATION - Restwell St at Stewart Lane	11 (set down only)

## TRANSPORT

### SW2-Inbound

Stop ID (TSN)	Transit Stop Name	Stop order
220080	BANKSTOWN STATION Stand J	1 (pick up only)
2196295	PUNCHBOWL STATION – The Boulevarde opp Broadway	2
2195110	WILEY PARK STATION - Wiley Park Station, The Boulevarde	3
2195118	LAKEMBA STATION – Lakemba Station, The Boulevarde	4
219226	BELMORE STATION – Bridge Rd opp Canterbury League Club	5
220450	SYDENHAM STATION -Sydenham Station, Railway Pde	6 (set down only)

### SW2-Outbound

Stop ID (TSN)	Transit Stop Name	Stop order
2204125	SYDENHAM STATION -Sydenham Station, Railway Pde, Stand C	1 (pick up only)
219227	BELMORE STATION – Canterbury League Club, Bridge Rd	2
219527	LAKEMBA STATION – Lakemba Station, The Boulevarde, Stand F	3
2195109	WILEY PARK STATION – The Boulevarde opp Wiley Park Station	4
2196242	PUNCHBOWL STATION – The Boulevarde opp Punchbowl Station	5
220018	BANKSTOWN STATION - Restwell St at Stewart Lane	6 (set down only)

### SW3-Inbound

Stop ID (TSN)	Transit Stop Name	Stop order
219416	CAMPSIE STATION- Campsie Station, South Pde, Stand D	1 (pick up only)
219321	CANTERBURY STATION – Canterbury Station, Canterbury Rd, Stand E	2
220450	SYDENHAM STATION -Sydenham Station, Railway Pde	3 (set down only)

### SW3-Outbound

Stop ID (TSN)	Transit Stop Name	Stop order
220421	SYDENHAM STATION -Sydenham Station, Railway Pde, Stand B	1 (pick up only)
2193105	CANTERBURY STATION – Canterbury Rd	2
219413	Campsie Station	3 (set down only)

## Appendix C - Temporary Bus Stop Infrastructure Assessment

Train Station	Bus stop TSN	Bus Stop Location	Shelter Required	Awning	Existing Bus Stop Shelter	Marquee Provided	Additional Lighting Provided	Additional Seating Provided
Bankstown	220080	Bankstown Station, Stand J	Yes	No	Yes	Yes 3 x (6m x 2m)	Additional Lighting Tower Provided	Additional seating provided
Bankstown	220080	Bankstown Station, Stand G	No	Yes	Yes	No		
Belmore	219226	Bridge Rd before Belmore Rd	Yes	No	No	Yes x 1 (4m x 3m)	Lighting available inside Marquee	Additional seating provided
Belmore	219227	Bridge Rd after Belmore Rd	Yes	No	No	Yes 1 x (4m x 2.5m)	Lighting available inside Marquee	Additional seating provided
Campsie	219414	Campsie Station, Beamish St, Stand C	No	Yes	No	No	Not required	
Campsie	219461	Campsie Station, Beamish St	No	Yes	No	No	Not required	
Campsie	219416	South Pde After Beamish St	Yes	No	No	Yes 1 x (8m x 2m)	Additional Lighting Tower Provided	
Campsie	219413	Beamish St before Anzac Mall	No	No	No	No	Not required	
Canterbury	219321	Canterbury Station, Canterbury Rd	Yes	No	No	Yes 1 x (6m x 2.5m)	Not required	Additional seating installation awaiting Council acknowledgement
Canterbury	2193105	Opp Canterbury Station, Canterbury Rd	Yes	No	No	Yes 1 x (6m x 2.5m)	Not required	
Dulwich Hill	2204118	Ewart St, Dulwich Hill	No	Yes	No	No	Lighting provided by Building Facility	
Dulwich Hill	220488	Ewart St, Dulwich Hill	No	No	Yes	No	Not required	
Hurlstone Park	219312	Floss Street at Hurlstone	No	No	No	Yes 1 x (4m x	Not required	

		Park Station				3m)		
Hurlstone Park	219311	Opp Hurlstone Park Station, Floss Street	Yes	No	Yes	Yes 1 x (2.5m x 4m)	Not required	
Lakemba	2195118	Lakemba Station, The Boulevarde	Yes	No	Yes x 1	Yes 1 x (6m x 2.5m)	Not required	
Lakemba	219527	The Boulevarde opp Lakemba Station	Yes	Yes	No	No	Not required	Additional seating installation awaiting Council acknowledgement
Marrickville	2204102	Illawarra Rd opp Marrickville Station	No	Yes	No	No	Not required	
Marrickville	2204101	Marrickville Station, Illawarra Rd	Yes	Yes	No	No	Not required	
Punchbowl	2196295	The Boulevarde opp Broadway	No	No	Yes	Yes 1 x (6m x 2.5m)	Not required	
Punchbowl	2196242	Punchbowl Station, The Boulevarde	No	Yes	No	No	Not required	
Sydenham	220450	Sydenham Station, Railway Pde	No	No	No	No	Not required	
Sydenham	220439	Sydenham Station, Railway Pde, Stand D	Yes	No	Yes	Yes 1 x (4mx3m)	Lighting available inside Marquee	Additional seating provided
Sydenham	2204125	Sydenham Station, Railway Pde, Stand C	Yes	No	No	Yes 5 x (6mx3m)	Lighting available inside Marquee	Additional seating provided
Sydenham	220421	Sydenham Station, Railway Pde, Stand B	Yes	No	No			Additional seating provided
Wiley Park	2195110	The Boulevarde, station side, before King Georges Rd	Yes	No	No	Yes 1 x (6m x 3m)	Not required	Additional seating provided
Wiley Park	2195109	The Boulevarde opp Wiley Park Station	Yes	No	Yes	Yes 1 x (4m x 3m)	Not required	Additional seating provided

## Appendix D - Temporary Transport Plan Bus Routes



# Southwest Link Bus Service

SW1

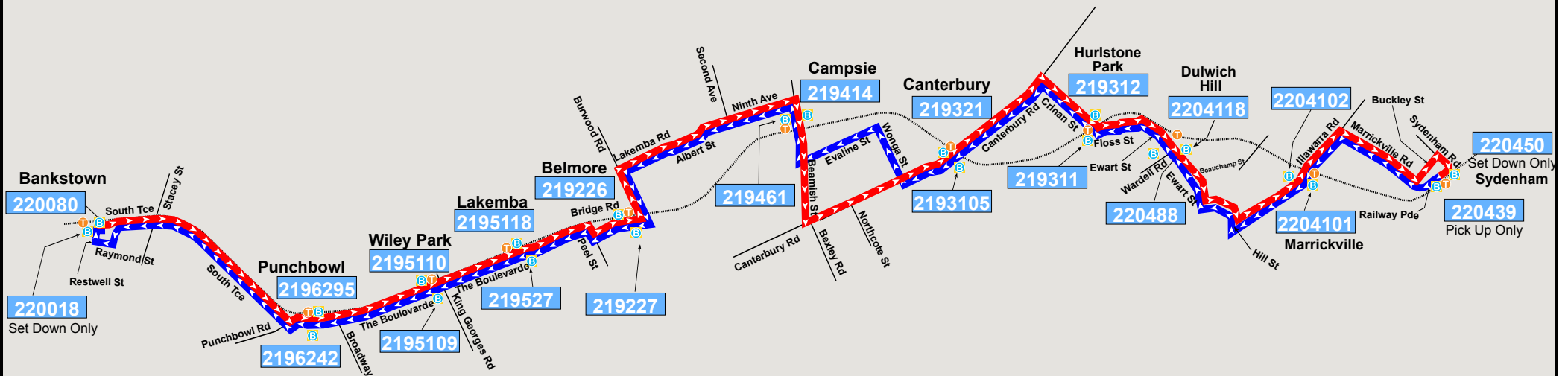
Bankstown to Sydenham

Both Directions

ALL STATIONS



Transport  
for NSW



## LEGEND

- Bus stop
- Bus stop #
- Route outbound
- Route citybound
- Route turn around



ROUTE:  
**SW1**

## SOUTHWEST LINK



Transport  
for NSW

### Bankstown to Sydenham – All Stops

Inbound – Up	Outbound – Down
<p><b>BANKSTOWN STATION</b></p> <p>Commence trip from TSN 220080 Stand J Bus Interchange</p> <p><b>LEFT</b> into South Terrace <b>CONTINUE</b> along South Terrace <b>LEFT</b> Punchbowl Road <b>RIGHT</b> The Boulevarde</p> <p>Set down/pick up for Punchbowl Station in Bus Stop TSN 2196295</p>	<p><b>SYDENHAM STATION</b></p> <p>Commence trip from TSN 220439 Railway Parade</p> <p><b>CONTINUE</b> along Railway Parade (right hand lane through the traffic lights, then merge left) <b>Veer LEFT</b> into Marrickville Road <b>LEFT</b> into Illawarra Road</p> <p>Set down/pick up for Marrickville Station in Bus Stop TSN 2204101</p>
<p><b>PUNCHBOWL STATION – The Boulevarde</b> TSN 2196295</p> <p><b>CONTINUE</b> along The Boulevarde</p> <p>Set down/pick up for Wiley Park Station in Bus Stop TSN 2195110</p>	<p><b>MARRICKVILLE STATION – Illawarra Rd TSN</b> 2204101</p> <p><b>CONTINUE</b> along Illawarra Road <b>RIGHT</b> into Hill Street <b>RIGHT</b> into Beauchamp Street <b>LEFT</b> into Ewart Street</p> <p>Set down/pick up for Dulwich Hill Station on Ewart St in Bus Stop TSN 220488</p>
<p><b>WILEY PARK STATION - The Boulevarde</b> TSN 2195110</p> <p><b>CONTINUE</b> along The Boulevarde</p> <p>Set down/pick up for Lakemba Station in Bus Stop TSN 2195118</p>	<p><b>DULWICH HILL STATION – Ewart St TSN</b> 220488</p> <p><b>CONTINUE</b> along Ewart Street and turns into Floss Street <b>RIGHT</b> into Crinan Street</p> <p>Set down/pick up for Hurlstone Park Station in Bus Stop TSN 219311</p>

ROUTE:  
**SW1**

## SOUTHWEST LINK

Bankstown to Sydenham – All Stops



Transport  
for NSW

Inbound – Up	Outbound – Down
<p><b>LAKEMBA STATION – The Boulevarde TSN 2195118</b></p> <p><b>RIGHT</b> into Peel Street <b>LEFT</b> into Bridge Road</p> <p><b>Set down/pick up for Belmore Station in Bus Stop TSN 219226</b></p>	<p><b>HURLSTONE PARK STATION – Crinan St TSN 219311</b></p> <p><b>CONTINUE</b> along Crinan Street <b>LEFT</b> into Canterbury Road</p> <p><b>Set down/pick up for Canterbury Station in Bus Stop TSN 2193105</b></p>
<p><b>BELMORE STATION – Bridge Rd TSN 219226</b></p> <p><b>LEFT</b> into Burwood Road <b>RIGHT</b> into Lakemba Rd turns into Albert St turns into Ninth Ave <b>RIGHT</b> into Beamish Street</p> <p><b>Set down/pick up for Campsie Station in Bus Stop TSN 219414</b></p>	<p><b>CANTERBURY STATION – Canterbury Rd TSN 2193105</b></p> <p><b>CONTINUE</b> along Canterbury Road <b>RIGHT</b> into Wonga Street <b>LEFT</b> into Evaline Street <b>RIGHT</b> into Beamish Street</p> <p><b>Set down/pick up for Campsie Station in Bus Stop TSN 219461</b></p>
<p><b>CAMPSIE STATION – Beamish St TSN 219414</b></p> <p><b>CONTINUE</b> along Beamish St <b>LEFT</b> into Canterbury Road</p> <p><b>Set down/pick up for Canterbury Station in Bus Stop TSN 219321</b></p>	<p><b>CAMPSIE STATION – Beamish St TSN 219461</b></p> <p><b>LEFT</b> into Ninth Ave turns into Albert St turns into Lakemba Rd <b>LEFT</b> into Burwood Road <b>RIGHT</b> into Bridge Road</p> <p><b>Set down/pick up for Belmore Station in Bus Stop TSN 219227</b></p>
<p><b>CANTERBURY STATION – Canterbury Rd TSN 219321</b></p> <p><b>CONTINUE</b> along Canterbury Road <b>RIGHT</b> into Crinan Street</p> <p><b>Set down/pick up for Hurlstone Park Station in Bus Stop TSN 219312</b></p>	<p><b>BELMORE STATION – Bridge Rd TSN 219227</b></p> <p><b>CONTINUE</b> along Bridge Road <b>RIGHT</b> into Peel Street <b>LEFT</b> into The Boulevarde</p> <p><b>Set down/pick up for Lakemba Station in Bus Stop TSN 219527</b></p>

ROUTE:  
**SW1**

## SOUTHWEST LINK



Transport  
for NSW

Bankstown to Sydenham – All Stops

Inbound – Up	Outbound – Down
<p><b>HURLSTONE PARK STATION – Crinan St TSN 219312</b></p> <p><b>LEFT</b> into Floss Street turns into Ewart Street</p> <p><b>Set down/pick up for Dulwich Hill Station in Bus Stop TSN 2204118</b></p>	<p><b>LAKEMBA STATION – The Boulevarde TSN 219527</b></p> <p><b>CONTINUE</b> along The Boulevarde</p> <p><b>Set down/pick up for Wiley Park Station in Bus Stop TSN 2195109</b></p>
<p><b>DULWICH HILL STATION – Ewart St TSN 2204118</b></p> <p><b>CONTINUE</b> Ewart Street <b>RIGHT</b> into Beauchamp Street <b>LEFT</b> into Hill Street <b>LEFT</b> into Illawarra Road</p> <p><b>Set down/pick up for Marrickville Station in Bus Stop TSN 2204102</b></p>	<p><b>WILEY PARK STATION – The Boulevarde TSN 2195109</b></p> <p><b>CONTINUE</b> along The Boulevarde</p> <p><b>Set down/pick up for Punchbowl Station in Bus Stop TSN 2196242</b></p>
<p><b>MARRICKVILLE STATION – Illawarra Rd TSN 2204102</b></p> <p><b>CONTINUE</b> along Illawarra Road <b>RIGHT</b> into Marrickville Road <b>LEFT</b> into Buckley Street <b>RIGHT</b> into Sydenham Road <b>RIGHT</b> into Railway Parade</p> <p><b>Set down for Sydenham Station in Bus Stop TSN 220450</b></p>	<p><b>PUNCHBOWL STATION – The Boulevarde TSN 2196242</b></p> <p><b>CONTINUE</b> along The Boulevarde <b>LEFT</b> into Punchbowl Road, <b>RIGHT</b> into South Terrace <b>LEFT</b> into West Terrace <b>RIGHT</b> into Raymond Street <b>RIGHT</b> into Restwell Street <b>RIGHT</b> into South Tce <b>LEFT</b> into Bus Interchange</p> <p><b>Set down for Bankstown Station TSN 220018 Restwell Street</b></p>
<p><b>Layover available on Lower Railway Parade (western side) or Burrows Avenue</b></p>	<p><b>Layover available on the southern side inside the bus interchange or on West Terrace</b></p>



Transport  
for NSW

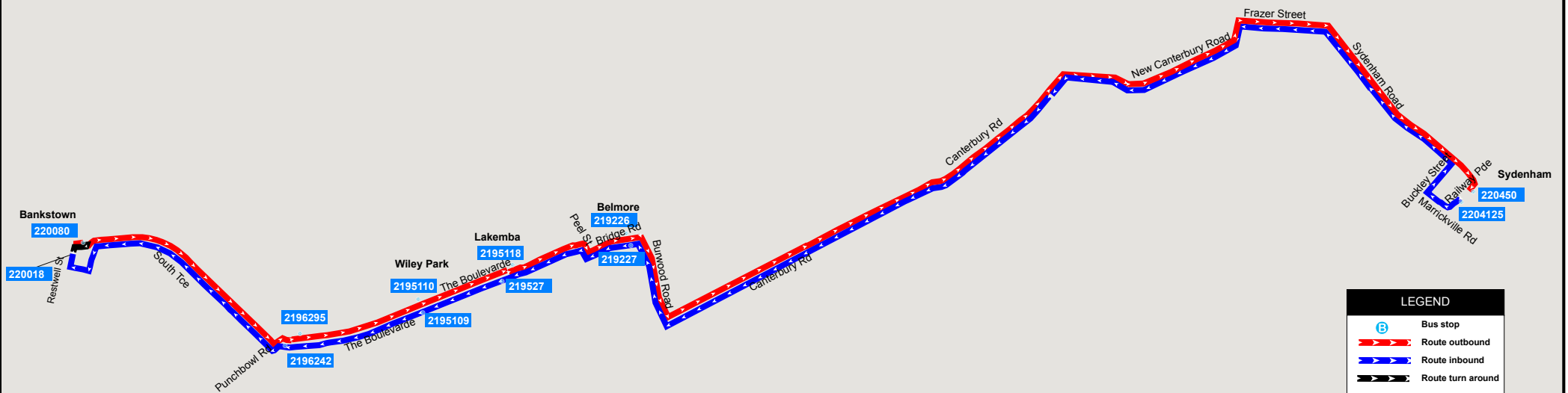
Southeast Link Bus Service

**SW2**

Bankstown to Sydenham

Both Directions

LIMITED STOPS



ROUTE:  
**SW2**

## SOUTHWEST LINK



Transport  
for NSW

### Bankstown to Sydenham – Limited Stops

Inbound – Up	Outbound – Down
<b>BANKSTOWN STATION</b>  Commence trip from TSN 220080 Stand J Bus Interchange  <b>LEFT</b> into South Terrace <b>CONTINUE</b> along South Terrace <b>LEFT</b> Punchbowl Road <b>RIGHT</b> The Boulevarde  Set down/pick up for Punchbowl Station in Bus Stop TSN 2196295	<b>SYDENHAM STATION</b>  Commence trip from TSN 2204125 Railway Parade  <b>CONTINUE</b> along Railway Parade (right hand lane through the traffic lights, then merge left) <b>Veer LEFT</b> into Marrickville Road <b>RIGHT</b> into Buckley Street <b>LEFT</b> into Sydenham Road and turns into Frazer Street <b>LEFT</b> into New Canterbury Road <b>LEFT</b> into Canterbury Road <b>RIGHT</b> into Burwood Road <b>LEFT</b> into to Bridge Road Set down/pick up for Belmore Station in BusStop TSN 219227
<b>PUNCHBOWL STATION – The Boulevarde TSN 2196295</b>  <b>CONTINUE</b> along The Boulevarde  Set down/pick up for Wiley Park Station in Bus Stop TSN 2195110	<b>BELMORE STATION – Bridge Rd TSN 219227</b>  <b>CONTINUE</b> along Bridge Road <b>RIGHT</b> into Peel Street <b>LEFT</b> into The Boulevarde  Set down/pick up for Lakemba Station in Bus Stop TSN 219527
<b>WILEY PARK STATION - The Boulevarde TSN 2195110</b>  <b>CONTINUE</b> along The Boulevarde  Set down/pick up for Lakemba Station in Bus Stop TSN 2195118	<b>LAKEMBA STATION – The Boulevarde TSN 219527</b>  <b>CONTINUE</b> along The Boulevarde  Set down/pick up for Wiley Park Station in Bus Stop TSN 2195109

ROUTE:

**SW2**

## SOUTHWEST LINK



Transport  
for NSW

### Bankstown to Sydenham – Limited Stops

Inbound – Up	Outbound – Down
<p><b>LAKEMBA STATION – The Boulevarde TSN 2195118</b></p> <p><b>RIGHT</b> into Peel Street <b>LEFT</b> into Bridge Road</p> <p><b>Set down/pick up for Belmore Station in Bus Stop TSN 219226</b></p>	<p><b>WILEY PARK STATION – The Boulevarde TSN 2195109</b></p> <p><b>CONTINUE</b> along The Boulevarde</p> <p><b>Set down/pick up for Punchbowl Station in Bus Stop TSN 2196242</b></p>
<p><b>BELMORE STATION – Bridge Rd TSN 219226</b></p> <p><b>RIGHT</b> into Burwood Road <b>LEFT</b> into Canterbury Road <b>RIGHT</b> into New Canterbury Road <b>RIGHT</b> into Frazer Street <b>RIGHT</b> into Sydenham Road <b>RIGHT</b> into Railway Parade</p> <p><b>Set down for Sydenham Station in Bus Stop TSN 220450</b></p>	<p><b>PUNCHBOWL STATION – The Boulevarde TSN 2196242</b></p> <p><b>CONTINUE</b> along The Boulevarde <b>LEFT</b> into Punchbowl Road, <b>RIGHT</b> into South Terrace <b>LEFT</b> into West Terrace <b>RIGHT</b> into Raymond Street <b>RIGHT</b> into Restwell Street <b>RIGHT</b> into South Tce <b>LEFT</b> into Bus Interchange</p> <p><b>Set down for Bankstown Station TSN 220018 Restwell St</b></p>
<p><b>Layover available on Lower Railway Parade (western side)</b></p>	<p><b>Layover available on the southern side inside the bus interchange or on West Terrace</b></p>

Southwest Link Bus Service

SW3

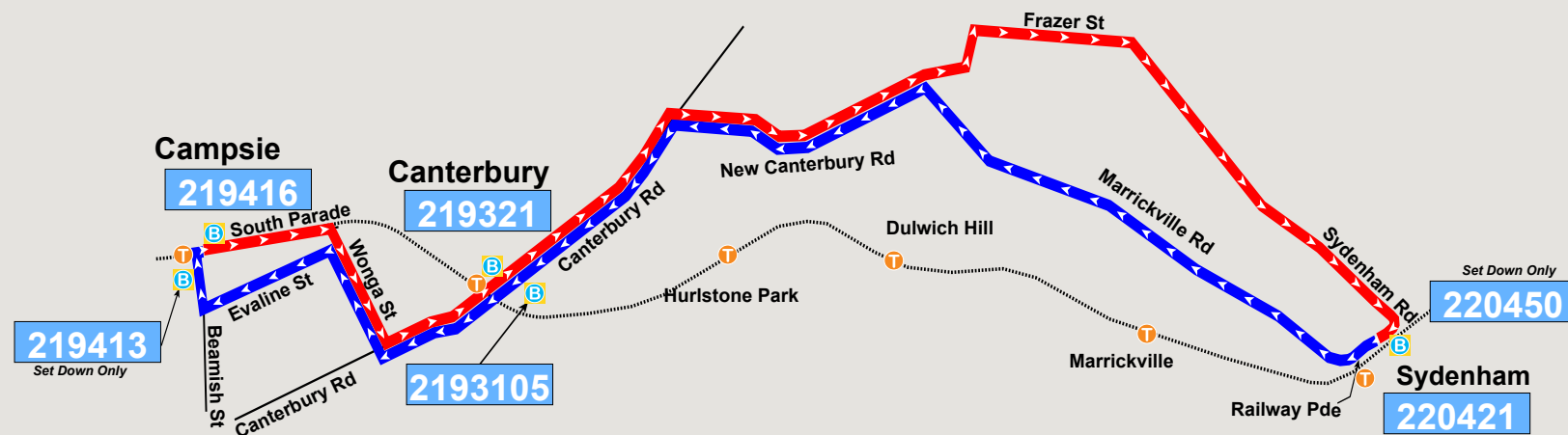
Campsie to Sydenham

Both Directions

EXPRESS



Transport  
for NSW



### LEGEND



Bus stop



Bus stop #



Route outbound



Route citybound



Route turn around





**ROUTE:  
SW3**

## **SOUTHWEST LINK**



**Transport  
for NSW**

**Campsie, Canterbury to Sydenham**

<b>Inbound – Up</b>	<b>Outbound – Down</b>
<p><b>CAMPSIE STATION</b></p> <p><b>Commence trip from South Parade TSN 219416</b></p> <p><b>CONTINUE</b> along South Parade <b>RIGHT</b> into Wonga Street <b>LEFT</b> into Canterbury Road</p> <p><b>Set down/pick up for Canterbury Station in Bus Stop TSN 219321</b></p>	<p><b>SYDENHAM STATION</b></p> <p><b>Commence trip from TSN 220421 Railway Parade</b></p> <p><b>CONTINUE</b> along Railway Parade (right hand lane through the traffic lights, then merge left) <b>Veer LEFT</b> into Marrickville Road <b>LEFT</b> into New Canterbury Road <b>LEFT</b> into Canterbury Road</p> <p><b>Set down/pick up for Canterbury Station at Bus Stop TSN 2193108</b></p>
<p><b>CANTERBURY STATION – Canterbury Rd TSN 219321</b></p> <p><b>CONTINUE</b> along Canterbury Road <b>RIGHT</b> into New Canterbury Road <b>RIGHT</b> into Frazer Street <b>RIGHT</b> into Sydenham Road <b>RIGHT</b> into Railway Parade</p> <p><b>Set down for Sydenham Station at Bus Stop TSN 220450 Railway Parade</b></p>	<p><b>CANTERBURY STATION – Canterbury Rd TSN 2193105</b></p> <p><b>CONTINUE</b> along Canterbury Road <b>RIGHT</b> into Wonga Street <b>LEFT</b> into Evaline Street <b>RIGHT</b> into Beamish Street</p> <p><b>Set down/pick up for Campsie Station in Bus Stop TSN 219413</b></p>
<p><b>Layover available on Lower Railway Parade (western side) or Burrows Avenue</b></p>	<p><b>Layover available on Duke Street or North Parade</b></p>

## Appendix E - Active Transport - Cycling Map

# Hurlstone Park to Sydenham via Dulwich Hill and Marrickville



Hurlstone Park

Dulwich Hill

Marrickville

Sydenham

## KEY

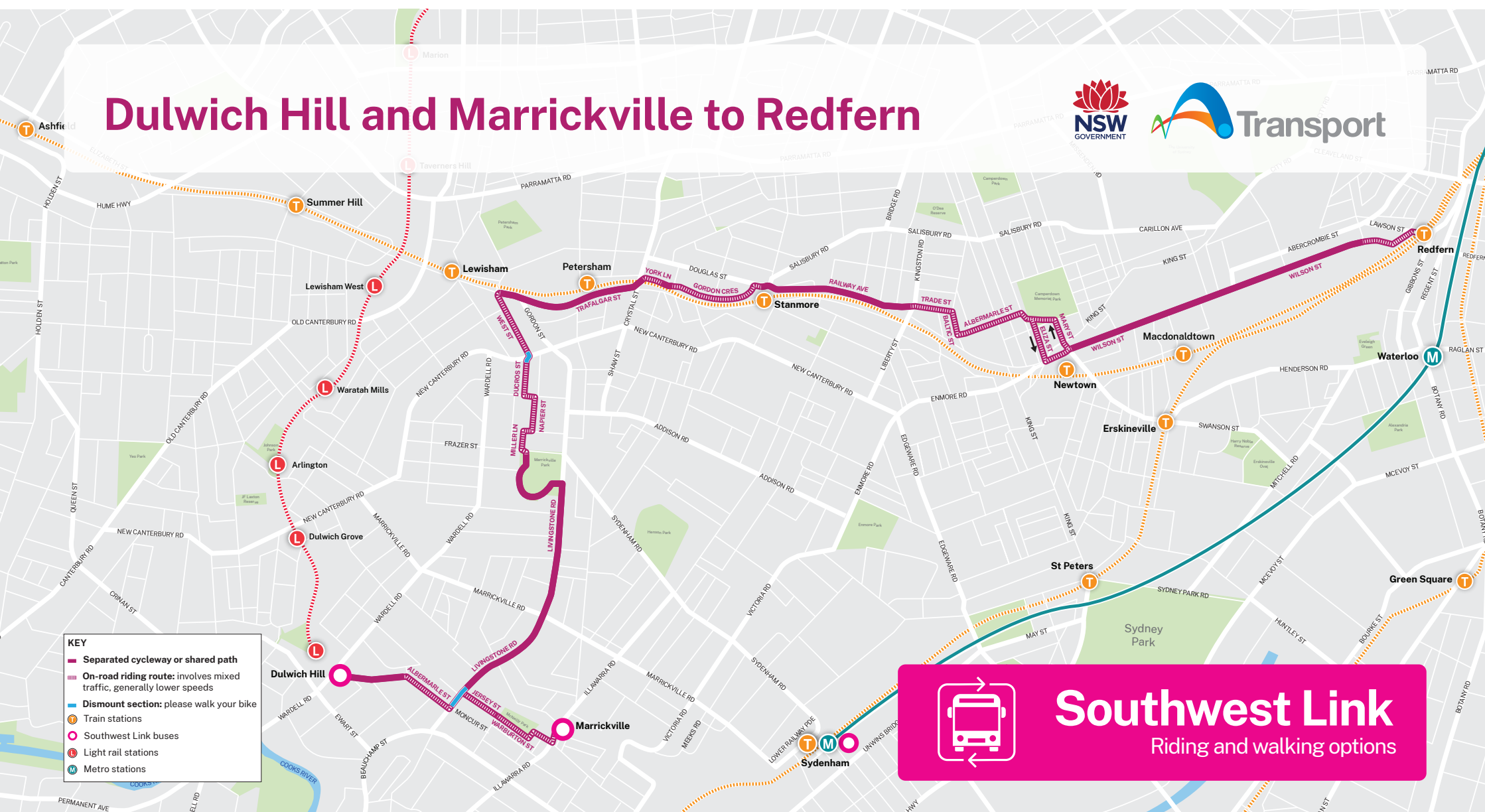
- Separated cycleway or shared path
- On-road riding route: involves mixed traffic, generally lower speeds
- Dismount section: please walk your bike
- Train stations
- Southwest Link buses
- Light rail stations
- Metro stations



## Southwest Link

Riding and walking options

# Dulwich Hill and Marrickville to Redfern



**Southwest Link**  
Riding and walking options

# Campsie to Tempe via Canterbury and Hurlstone Park



**© Transport for New South Wales**

Users are welcome to copy, reproduce and distribute the information contained in this report for non-commercial purposes only, provided acknowledgement is given to Transport for NSW as the source.