

Upcoming cross passage work: Darling Drive, Pyrmont

26 September 2025

The NSW Government is delivering Sydney Metro West – a new underground metro railway which will double rail capacity between Parramatta and the Sydney CBD, transforming Sydney for generations to come.

Stations have been confirmed at Westmead, Parramatta, Sydney Olympic Park, North Strathfield, Burwood North, Five Dock, The Bays, Pyrmont and Hunter Street in the Sydney CBD.

Tunnel Boring Machines (TBMs) Jessie and Ruby have successfully traversed the Pyrmont Crossover and Station cavern and have recently recommenced tunnelling towards Hunter Street Station in the CBD.

Cross passage work near Darling Drive

Two Tunnel Boring Machines (TBMs) are passing your property to build the twin metro rail tunnels. Two cross passages connecting the twin rail tunnels will be constructed in your area over the coming months. Please view the map overleaf.

Cross passages are an important safety feature of the metro tunnels, located about every 250 metres, they allow people to move between the rail tunnels in the unlikely event of an emergency. The cross passage in your area is located approximately 30 metres below the ground and within the harbour bedrock.

Construction activities are expected to commence from **Friday 3 October 2025** and will take about six months to complete.

Cross passage construction activities

- Drilling, saw cutting and installing ground support.
- Excavating the cross passage using a rock hammer.
- Installing waterproofing and concrete lining
- Removing excavated material via our Pyrmont East site and The Bays site.
- Low impact surveying and geotechnical investigations.

Work hours

- Cross passage construction work can occur 24 hours a day, 7 days per week
- High impact work will occur during standard construction hours 7am – 6pm Monday to Friday and 8am – 6pm, Saturdays

What to expect

- Some vibration and ground borne noise may be experienced during cross passage construction work.
- We will aim to schedule high impact work during standard construction hours.
- We will undertake regular noise and vibration monitoring to ensure work is carried out within Project approvals.

Equipment and machinery

May include but is not limited to: excavators, rock hammers, drills, saws, elevated work platform, concrete trucks and equipment.

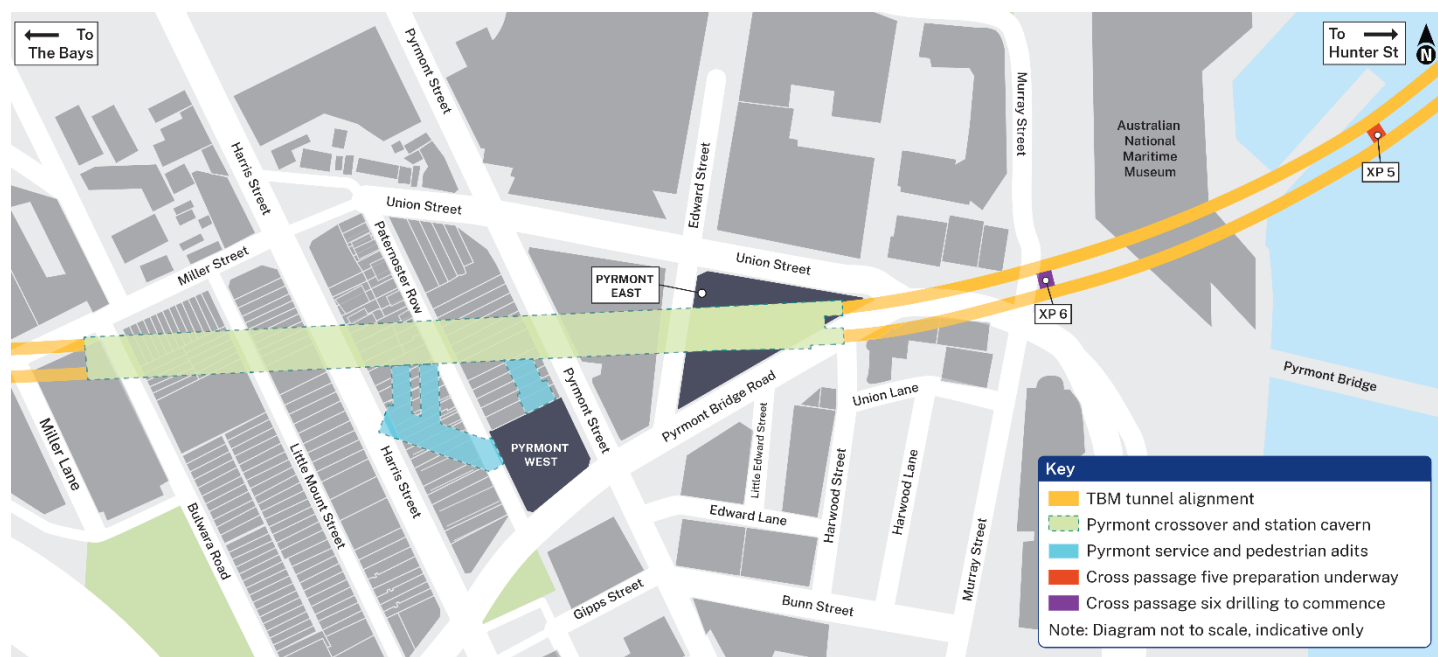
Stay up to date

Stay informed on the latest tunnelling progress via email by sending your request to:

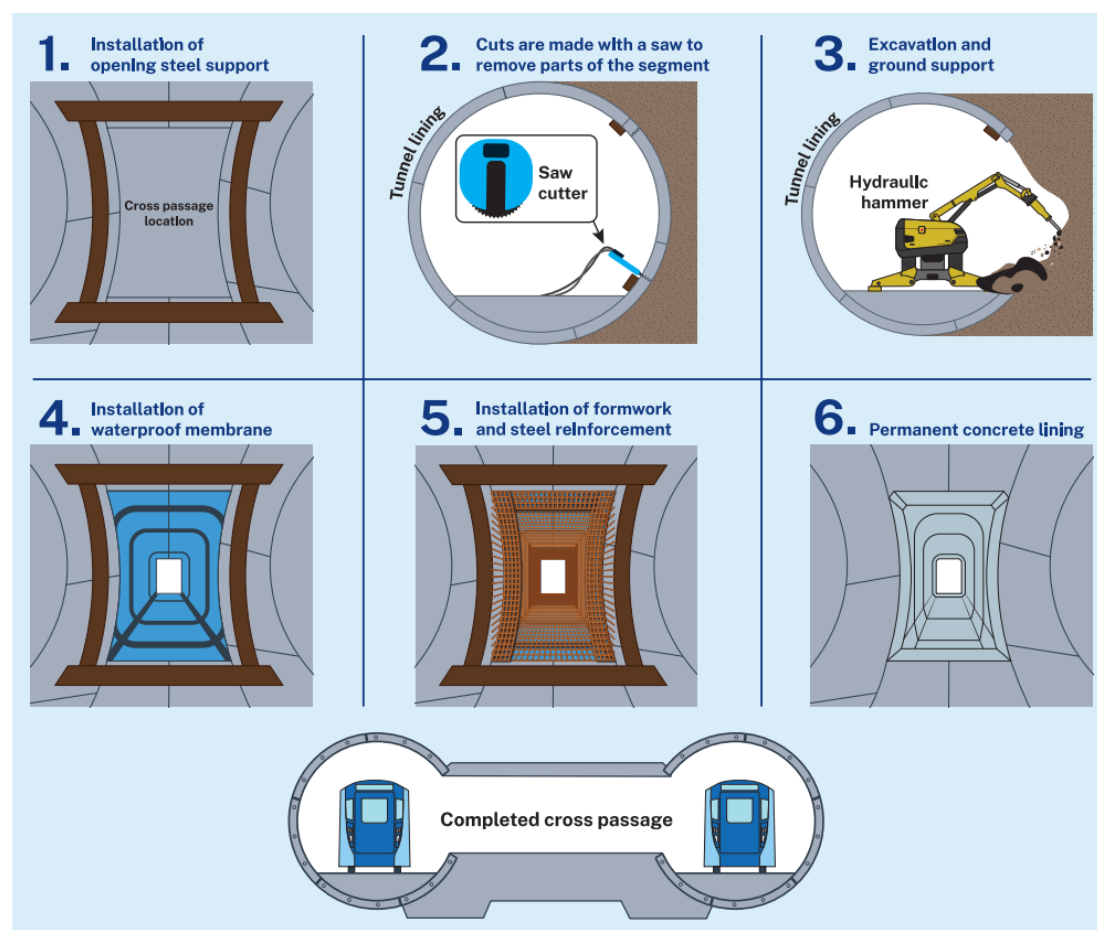
MetroTunnelsJCGJV@transport.nsw.gov.au



Location of upcoming cross passages



Cross passage excavation process



Contact us



24-hour Project Infoline **1800 612 173**



MetroTunnelsJCGJV@transport.nsw.gov.au



Sydney Metro West, PO Box K659, Haymarket, NSW 1240



Download Sydney Metro Connect from the App store or get it on Google Play.