

Mr [REDACTED]

5 September 2025

Ref: 170108-ER_DPHI Aug 2025

Department of Planning, Housing and Infrastructure
Locked Bag 5022
PARRAMATTA NSW 2124

Dear [REDACTED]

RE: Sydney Metro City and South West – ER Monthly Reports for August 2025

Healthy Buildings International (HBI) submits this report to the Secretary in accordance with:

- Condition A26 (j) of the Sydney Metro Sydenham to Bankstown Upgrade SSI_8256 Approval (12 December 2018) and associated modifications MOD1_Bankstown Station and Mod 2_Modification to A9, D3 and E53 (2 June 2025).

The attached summaries detail the key activities undertaken by Environmental Representatives for Sydney Metro – City and South West Sydenham to Bankstown for the month of **August 2025**.

Yours sincerely

[REDACTED]
Environmental Representative

Cc: Sydney Metro: [REDACTED]
AA: Available on Sydney Metro Website
Contractors: Available to Contractors on Sydney Metro Website
DPHI Compliance: Portal
DPHI Post Approvals: Available on Sydney Metro Website



Table of Contents

1.	Sydenham to Bankstown – TSOM.....	3
2.	Southwest Metro Corridor Package 3 (SWM3) JHLOR	4
3.	Errant and Hostile Vehicle Mitigation Treatments (EHVMT)	7
4.	Sydney Metro Retained Obligations (SM).....	11
5.	Statement of Limitations	12

1. Sydenham to Bankstown – TSOM

Project Approval	Contract Package	EPL	Environmental Representative/s
SSI 8256 (S2B)	Train Service Operation and Maintenance (TSOM)	JHLOR EPL 21147 – MTR continues to work under JHLOR CEMP, and subplans SSI 8256	
Key Construction Activities During the Period			
<ul style="list-style-type: none"> Southwest corridor and stations <ul style="list-style-type: none"> Installation of field devices Cable hauling within the station platform buildings Testing and commissioning of cabinets 			
Key Construction Activities Look Ahead			
<ul style="list-style-type: none"> Southwest corridor and stations Marrickville, Dulwich Hill, Hurlstone Park, Canterbury, Campsie, Belmore, Lakemba, Wiley Park, Punchbowl and Bankstown Stations: <ul style="list-style-type: none"> Cable installation works to the station platform buildings Cabinet installation Cable installation works to field equipment devices Installation of field equipment devices throughout the station and surrounding areas Termination of cabling to field equipment Testing and commissioning of cabinets and field equipment Train testing activities 			
ER Inspections			
<ul style="list-style-type: none"> The works at station platform and Metro Service Buildings (MSBs) such as cable pulling were observed by the ER while inspecting SWM3 sites, no issues were raised. 			
Photos			
<ul style="list-style-type: none"> N/A 			
Endorsed Document/s			
<ul style="list-style-type: none"> Nil 			
Non-compliance/ Incidents or Repeat Complaints			
<p>Sydney Metro has been providing summaries of complaints to DPHI daily and a summary to the ER. Responses to each complaint have been noted in each complaint report, with follow up actions often defined in revised reports. Key or repeat items of note are discussed below for the respective projects.</p> <p>There were no incidents for TSOM reported to the ER under condition A36 of SSI 8256.</p> <p>No non-compliances were raised by the ER, Sydney Metro or reported to the ER during the reporting period.</p> <p>Project related complaints:</p> <ul style="list-style-type: none"> Nil <p>Unrelated Project complaints:</p> <ul style="list-style-type: none"> Nil 			
Audits			
<ul style="list-style-type: none"> No audits 			
Looking Forward – Core Focus Areas			
<ul style="list-style-type: none"> Works at platforms within close proximity of heritage listed stations Testing and commissioning between Sydenham and Bankstown 			



2. Southwest Metro Corridor Package 3 (SWM3) JHLOR

Project Approval	Contract Package	EPL	Environmental Representative/s
SSI 8256 (S2B)	Southwest Metro Corridor Package 3 (SWM3) JHLOR	#21147	
Key Construction Activities - During the Period			
<ul style="list-style-type: none"> Project wide - Defect works at station platforms are ongoing Canterbury Compound - Site offices and amenities in operation, fuel and gas storage; vegetation maintenance including weed removal North Terrace Compound, Bankstown: Site offices and amenities, fuel and gas storage Belmore Triangle - Laydown area operations ongoing including material stockpiles, concrete and liquid waste management Marrickville Station – Platform works nearing completion Punchbowl Station - Platform works ongoing Campsie - Platform works ongoing Marrickville Station - Platform works ongoing Canterbury Station – Platform works ongoing Lakemba Station – Platform and landscaping works ongoing Belmore Station – Platform works ongoing Wiley Park - Platform works ongoing Bankstown Station - Block work, brick work, roofing installation ongoing on Sydney Metro side building Ongoing tree impact assessment, pruning, removal and ecologist supervision. Some sections adjacent to Threatened Ecological Communities (TECs) and threatened species, e.g. Belmore Station, Bruest Street ramp (Punchbowl), Urunga Parade (Punchbowl), South Terrace (Bankstown) Vegetation management within the rail corridor Ongoing operation of site office caravans at selected Metro Services Buildings (MSBs) Stockpile management including waste classification, waste tracking, load-in / load-out, management of site accesses and truck routes <p>The following works were completed during WE05 02/08/2025 and 03/8/2025 Possession - Sunday Day OOHW:</p> <ul style="list-style-type: none"> Rail to earth testing through corridor Various Stations - asphaltting works Various Stations - mixed work and defects Corridor Intrusion Detection System and Object Detection System (CIDS and ODS package) vegetation pruning and clearing General vegetation maintenance - corridor wide Galvanised Steel Troughing rectification Testing and energization Redundant asset removal - buildings Inspection works on track drainage system using Closed Circuit Television (CCTV) cameras Overhead Wiring maintenance 			
Key Construction Activities Look Ahead			
<ul style="list-style-type: none"> Platform works at all stations Charles St crash beam installation Survey and defect inspections at all stations Vegetation removal related to CIDS and ODS package Testing and commissioning between Sydenham and Bankstown 			
ER Inspections			
<p>One ER inspection was conducted in the reporting period on 19 August 2025. One minor issue related to tonal reverse alarm being used on a truck was raised during the inspection which was promptly addressed by the contractor.</p>			

Photos



Figure 1 – Charles St – Traffic Management Plan/Traffic Control Plan Implementation completed at the Charles St crash beam installation site.



Figure 2 – Charles St – Tree trimming works being undertaken.

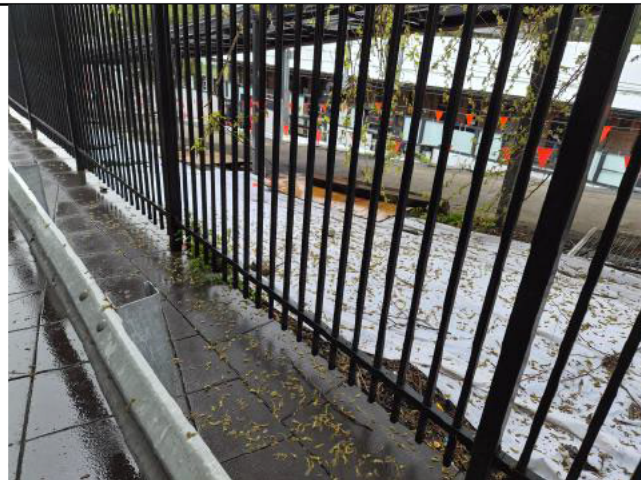


Figure 3 – Canterbury Station - Erosion controls installed on the embankment near the pedestrian ramp.



Figure 4 – Marrickville Station - Asphalt removal and majority of works completed at Marrickville Station.



Endorsed Document/s
<ul style="list-style-type: none"> Nil
Community Consultation
The monthly project related notifications were issued, and consultation was undertaken with the affected communities regarding out-of-hours works.
Non-compliance/ Incidents or Repeat Complaints
Summaries of CSW complaints are now received on a weekly basis. Complaints are discussed where relevant for each package below.
<p>No NCRs were raised by the ER or Sydney Metro.</p> <p>There were no incidents reported to the ER under Condition A36 of SSI 8256.</p> <p>During the period, one Class 3 environmental incident was reported to the ER. No other Class 3 environmental incidents were reported:</p> <p>27/08/2025 – Water main impact incident at Dulwich Hill</p> <p>The ER is aware of the following complaints received in August 2025 related to the SWM3 works. The number of complaints decreased in this reporting period compared to the previous month:</p> <ul style="list-style-type: none"> Three related to Noise and Vibration - OOHV; Working hours; Traffic, Transport and Parking
Audits
Nil
Summary of Environmental Performance
Environmental risks are consistent with out of hours works during possessions and maintaining compliance with the Tree Report during the security fence installation. Actions raised during ER inspections are closed out within the agreed timeframe with useful supporting documentary evidence provided.
Looking Forward – Core Focus Areas
<ul style="list-style-type: none"> Management of ERSed controls generally Management of noise during out-of-hours work during possessions Management of tree impacts, Plant Community Types (PCTs) and Threatened Environmental Communities (TECs) during construction of security fencing along the alignment, and maintenance of the buffer zone.

3. Errant and Hostile Vehicle Mitigation Treatments (EHVMT)

Project Approval	Contract Package	EPL	Environmental Representative/s
SSI 8256 (S2B)	Errant and Hostile Vehicle Mitigation Treatments (EHVMT) Martinus Rail	No EPL	
Key Construction Activities - During the Period			
<p>Construction Activities: General: Minor Ancillary Facilities operating at Belmore, and North Terrace/Stacey Street, Bankstown.</p> <ul style="list-style-type: none"> • Livingstone Road – Form, Reo, Pour (FRP) works continuing • Wardell Road – Finishing works • Duntroon Street – Finishing works • Melford Street – Finishing works • Canterbury Road – Utility relocation works complete, piling works commenced on westbound lane • Loch Street – Footpath and barrier works continuing. Asphalt works to be completed • Burwood Road – Finishing works • Moreton Street – Remaining concrete barrier works ongoing. • Haldon Street – Piling works commenced on City side • King Georges Road – Concrete barrier and footpath works continuing. • Punchbowl Road – Finishing works continuing • Stacey Street – Footpath and concrete barrier works (northbound) are continuing, with TMP implementation commenced on southbound set up. Bridge strengthening works have commenced on the undersides of both sides of the bridge. Hydro demolition has been completed; concrete barrier pours to commence on Southbound Lane. <p>Completed sites: Overbridge sites:</p> <ul style="list-style-type: none"> • Illawarra Road • Garnett Street • Albermarle Street <p>Non-bridge sites:</p> <ul style="list-style-type: none"> • Wattle Street/North Terrace – steel rail guard • Bruest Place/Kelly Street Punchbowl – concrete barrier installation completed. • Peel St • Railway Pde • Dennis St • Railway Pde • Kier Avenue/Hurlstone Park – steel rail guard installation completed. • Dudley Street – ecologist tech memo prepared to demonstrate nil impact to Plant Community Types. 			
Key Construction Activities Look Ahead			
<ul style="list-style-type: none"> ▪ Punchbowl Road, Punchbowl – Finishing works ▪ Melford St, Hurlstone Park – Finishing works ▪ King Georges Road, Wiley Park – Intersection works ▪ Burwood Road, Belmore – Finishing works ▪ Albermarle St, Dulwich Hill – Sydney Trains HV feeder 761 removal, delivery and installation of the off-structure beam, demolition of existing balustrade fence, installation of screens ▪ Duntroon St, Hurlstone Park – Barrier works and finishing of off-structure beams using crane ▪ Livingstone Road, Marrickville – Remediation works, barrier works 			

- Canterbury Road, Canterbury – Overbridge remedial works, service searching and modification of northeast hoarding, Sydney Water main relocation works planning
- Loch St, Campsie – Finishing works
- Haldon St, Lakemba – Piling works on the north and south side of the rail corridor

ER Inspections

- ER inspections are undertaken based on scope/risk levels of the activities. One ER inspection was undertaken in the reporting period on 25/08/2025 with the key focus on erosion and sediment controls and tree protection zones management. No new issues were raised.

Photos



Figure 1 – Stacey St, Bankstown – Bridge modification works commenced.



Figure 2 – Stacey St, Bankstown – Panel removal from Stacey St Overbridge ongoing.



Figure 3 – Stacey St – Stage 2 – Hydro demolition of existing footpath and kerb complete, Footpath works including form, reo and pour (FRP) ongoing.

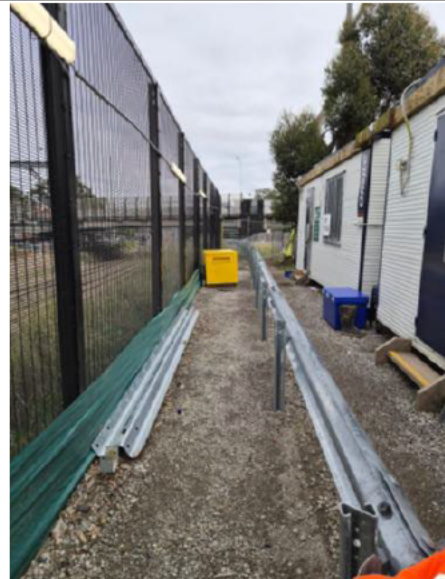


Figure 4 – Stacey St compound – Steel barrier installed near Stacey St compound. Stacey St compound to be demobilised prior to December 2025 (exact date to be confirmed).



Figure 5 – Canterbury Rd, Canterbury - Bollards installed. Footpath and Sydney water asset relocation related investigation works ongoing. Unexpected finds identified during non-destructive excavation using vacuum truck. Area backfilled and heritage specialist is scheduled to attend site.



Figure 6 – Canterbury Road, Canterbury - Anti-throw screen installation completed on the station side.



Figure 7 – Haldon St, Lakemba – Piling works completed. Form, reo, pour (FRP) works for over structure beam (OSB) ongoing.

Endorsed Document/s

- CTR Q4 2024 – 08/08/2025

Community Consultation

The monthly project related notifications were issued, and consultation was undertaken with the affected communities regarding out-of-hours works.

Non-compliance/ Incidents or Repeat Complaints

Since commencement of City metro services passenger operations on Monday 19 August 2024, Sydney Metro is now providing summaries of CSW complaints on a weekly basis (was provided daily until 16 August 2024) to DPHI and ERs covering complaints related to remaining construction works.

There were no non-compliances raised by the ER or reported to the ER during the reporting period.

There were no incidents reported to the ER under Condition A36 of SSI 8256.

There were no Class 3 environmental incidents reported to the ER during the reporting period.

ER is aware of the following complaints received during the reporting period. The number of noise related complaints increased in this reporting period due to more OOHW being undertaken than the previous period:



- | |
|--|
| <ul style="list-style-type: none">▪ Ten complaints related to OOHW Noise and Vibration▪ Two complaints related to Traffic, Transport and Parking▪ One complaint related to Flora and Fauna |
|--|

Audits

No ER involvement in audit activity including Independent Environmental Audits.

Looking Forward – Core Focus Areas

- | |
|---|
| <ul style="list-style-type: none">▪ Management of erosion and sediment controls generally▪ Management of noise and dust during out-of-hours works▪ Management and protection of retained heritage items |
|---|



4. [Sydney Metro Retained Obligations \(SM\)](#)

Project Approval	Contract Package	EPL	Environmental Representative/s
SSI 8256 (S2B)	Sydney Metro Retained Obligations (SM)	Not applicable	
Key Construction and other Activities			
SM	<ul style="list-style-type: none">Working with MTR for various dynamic testing related activities for Southwest (including variable speed testing of the metro trains)Working with RMA for Chatswood Driveway and Mowbray Road Shared Path Works		
ER Inspections			
	<ul style="list-style-type: none">Nil		
Endorsed Document/s			
ER	<ul style="list-style-type: none">Nil		
Non-compliance/ Incidents or Repeat Complaints			
<p>Since commencement of FPS on the City portion of CSW, Sydney Metro now provides summaries of CSW complaints on a weekly basis to DPHI and ERs covering complaints related to remaining construction works. Key or repeat items of note are discussed below for the respective projects, where applicable or under respective CSW packages.</p> <p>No incidents were reported to the ER during the reporting period.</p> <p>No non-compliances were reported to the ER during the reporting period:</p>			
Audits			
SM	Nil		
Looking Forward – Core Focus Areas			
SM	Collaborating with MTR and MTS to ensure the required documents are ready for the First Passenger Service.		



5. [Statement of Limitations](#)

Healthy Buildings International (HBI) has prepared this report in accordance with the requirements of Condition A24(l) of the Sydney Metro Condition A26(j) of the Sydney Metro Conditions of Approval (CSSI 17_8256).

The report is for the sole purposes of Department of Planning, Housing and Infrastructure (DPHI) and Sydney Metro. It has been prepared based on generally accepted practices and standards at the time it was prepared. No other warranty, expressed or implied, is made as to the professional advice included in this Report. This report did not assess any aspects relating to safety.

Where the Report indicates that information has been provided to HBI by third parties, HBI assumes no liability for any inaccuracies in or omissions to that information.

This Report was prepared based on the conditions encountered and information reviewed for the period of reporting. HBI disclaims responsibility for any changes that may have occurred after this time.

This Report should be read in full. No responsibility is accepted for use of any part of this report in any other context or for any other purpose or by third parties. This Report does not purport to give legal advice. Legal advice can only be given by qualified legal practitioners.

Except as required by law, no third party may use or rely on this Report unless otherwise agreed by HBI in writing. Except as specifically stated in this section, HBI does not authorise the use or findings of this Report by any third party.

To the extent permitted by law, HBI expressly disclaims and excludes liability for any loss, damage, cost or expenses suffered by any third party relating to or resulting from the use of, or reliance on, any information contained in this Report. HBI does not admit that any action, liability, or claim may exist or be available to any third party.