

# Project update – Chatswood Dive Site

October 2025

Sydney Metro is Australia’s biggest public transport project.

Services started in May 2019 in the city’s North West with a train every four minutes in the peak. On 19 August 2024, services began on the new section of the M1 Line, including 15.5 kilometres of metro rail extending from the existing Metro North West at Chatswood, under the harbour and through the Sydney CBD and onto Sydenham. Commuters can now catch metro services every four minutes in the peak from new stations at Crows Nest, Victoria Cross, Barangaroo, Martin Place, Gadigal and Waterloo, and new metro platforms at Central.

RMA Group is carrying out remediation work within the residual land at Chatswood Dive Site. From August 2025, RMA Group is also delivering works to construct a new shared path along Mowbray Road. The path will provide a safe and convenient connection for pedestrians and cyclists, linking the Pacific Highway and Mowbray Road intersection to the extended Frank Channon Walk. The Mowbray Road shared path is designed to support future growth in active transport, complementing Willoughby Council’s new cycleway from Hampden Road to St Leonards.

## Remaining work at Chatswood Dive Site

Standard project work hours are Monday to Friday, 7am to 6pm and Saturday, 8am to 6pm.

Location	Work during standard hours
Chatswood Dive Site residual land	<ul style="list-style-type: none"><li>Remediation work including concrete saw-cutting and hammering, excavation, compaction, removal of contaminated soil and offsite disposal of the contaminated soil</li><li>Constructing a driveway within the remediation site boundary, inc. placing and finishing concrete.</li><li>The existing site hoarding will be adjusted to the location of new driveway. A hammer will be used to remove the steel post concrete.</li><li>RMA will be remediating the driveway leading into the remediation site. Activities will inc. excavation, concrete removal/disposal, fill removal/disposal, soil sampling &amp; concrete placement.</li><li>Soil sampling, ongoing noise &amp; vibration monitoring &amp; delivery of materials and equipment</li><li>General maintenance activities as required for the operation of Northern Dive facility.</li></ul>
Out-of-hours work (night) work hours – due to the nature of some activities and for the safety of community and workers, some work will occur outside standard construction hours between 8pm and 5am.	
Location	Out-of-hours work
Mowbray Road footpath between Pacific Highway and Frank Channon Walk	<ul style="list-style-type: none"><li>Work will take place to construct a shared path on Mowbray Road between Pacific Highway and Frank Channon Walk. High noise activity will take place earlier in the evening wherever possible to reduce impacts on nearby residents. The Contractor will stop at 4am and clear plant and equipment to leave site by 5am.</li><li>The shared path works will be designated into 4 zones – Zone 1 is from Mowbray Road intersection, Zones 2 and 3 is the site driveway and Zone 4 is from Pacific Highway.</li><li>From 1 October to 12 October, work will be occurring in Zone 2. The Contractor will continue excavation of existing bitumen fill, add new fill to raise the shared path levels, compaction the fill with a roller, place formwork and pour concrete.</li><li>From 13 October to 1 November, the above work will be repeated in Zone 3.</li></ul>

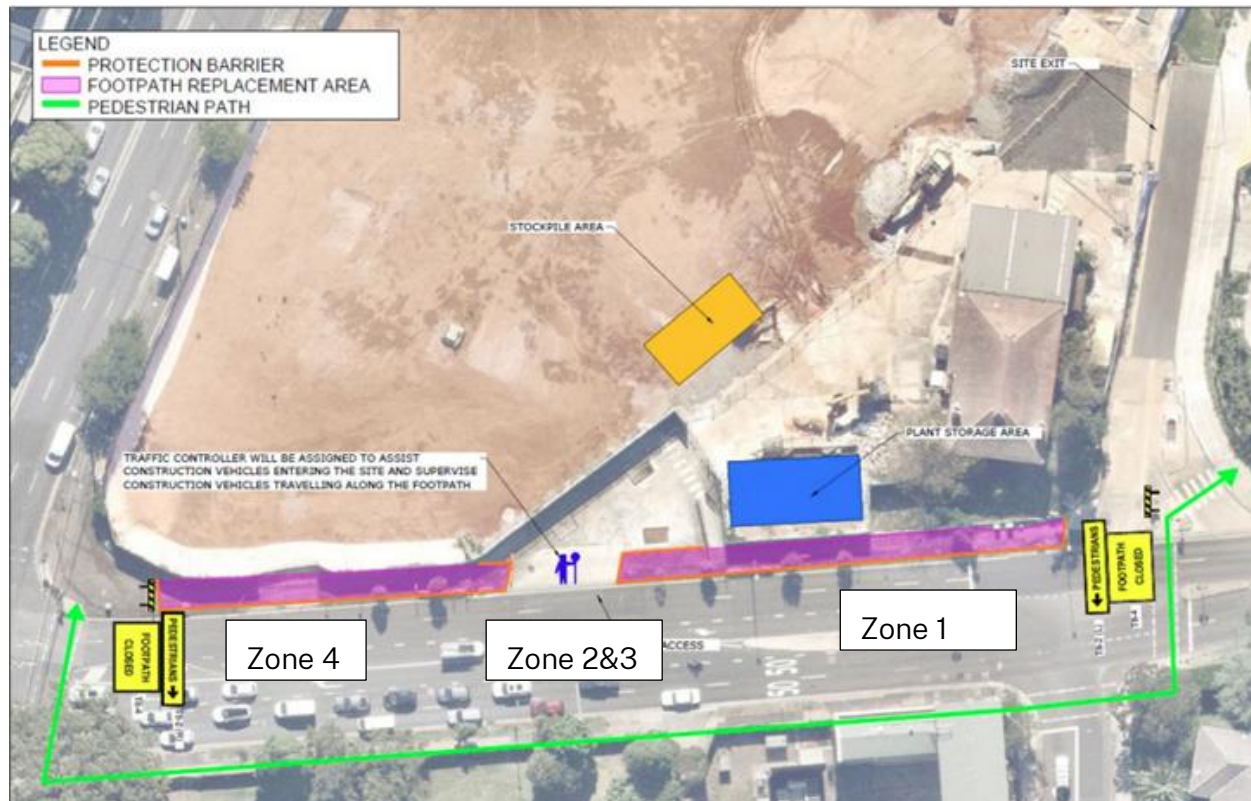




## What to expect

- Traffic control and directional signage will be in place to ensure the safety of workers, pedestrians, and community.
- The existing footpath along Mowbray Road will be closed for the duration of the works. Pedestrians will be guided to use the designated crossings at the Pacific Highway and Mowbray Road intersections. Traffic controllers will be on site to assist and ensure safe passage.
- To allow the work to be carried out safely, a single eastbound lane closure on Mowbray Road is planned during the following periods:
  - Weeknights: Monday to Friday, 8pm to 4am
- Construction equipment to be used includes hand tools, pit lifters, tipper trucks, concrete agitator trucks, concrete trowel machines, asphalt pavers, concrete saw, excavator, skid steer loader & vibratory roller. Night works will require lighting.
- Access to buildings and driveways will be maintained at all times.
- Some construction activities will generate noise. The project team will make every effort to minimise disruption, including the use of non-tonal reversing beepers and instructing workers to keep noise to a minimum. On going noise monitoring will be in place to ensure all noise stays within allowable limits

## Location of works



Thank you for your cooperation and understanding while we complete this essential work.

If you have any questions about the remaining work at the Chatswood Dive Site, please contact the Sydney Metro Project Communications Team by calling 1800 171 386 (24-hour community information line) or emailing [sydneymetro@transport.nsw.gov.au](mailto:sydneymetro@transport.nsw.gov.au)

## Contact us

 24-hour Community Information Line **1800 171 386**

 **[sydneymetro@transport.nsw.gov.au](mailto:sydneymetro@transport.nsw.gov.au)**

 Sydney Metro City & Southwest, PO Box K659,  
Haymarket NSW 1240



## Translating and interpreting service

If you need help understanding this information, please contact the Translating and Interpreting Service on **131 450** and ask them to call us on **1800 171 386**