

Notification – Orchard Hills Metro Station and the Stabling and Maintenance Facility

Sydney Metro is Australia's biggest public transport project.

September 2025

Sydney Metro – Western Sydney Airport is the new metro railway line which will service Greater Western Sydney and the new Western Sydney International (Nancy-Bird Walton) Airport. A city-shaping project, the new 23-kilometre metro railway will connect Bradfield city centre with St Marys in the north – where customers can connect to the existing Sydney Trains suburban T1 Western Line. The NSW and Australian governments have a shared objective of having Sydney Metro – Western Sydney Airport operational when the airport opens for passenger services.

Parklife Metro consortium is delivering the Stations, Systems, Trains, Operations and Maintenance (SSTOM) works. See the list below for the work activities at Orchard Hills during September.

What's new in September?

- delivery and installation of precast concrete beams
- tree removal on Kent Road and corner of Lansdowne Road
- concrete crushing at Orchard Hills North

Stations, Systems, Trains, Operations and Maintenance work includes:

Orchard Hills Metro Station:

- formwork, steel fixing and concrete pours inside the station box
- installation of precast concrete elements and permanent services
- tunnel fit-out works
- construction of internal blockwork walls inside the station box
- ongoing survey works to confirm the design, and verify construction works
- capping beam demolition works
- surveying and geotechnical investigations, including potholing, non-destructive digging and testing along local surrounding roads to inform utility designs
- delivery of over-sized equipment, machinery and materials
- concrete crushing at Orchard Hills North.

Stabling and Maintenance Facility:

- major earthworks including importing materials, excavations, constructing permanent basin, and compacting of the rail areas
- construction of a new 132kV powerline, connecting the substation to the Endeavor Energy Switching Station at Patons Lane
- on-going major drainage works including excavations, installing pits and pipes and backfilling
- site-wide concrete works, including formwork and steel fixing for various building structures
- combined services route and trunk services installation
- continuation of works on the permanent access road
- installation of steel structures and blockwork to major buildings
- mechanical, electrical, plumbing and architectural finishes activities in the major buildings

- commencement of track formation scope
- ongoing deliveries of rail track, materials, machinery and equipment
- flash butt welding of railway track on site
- installation of light pole footings

Linewise work – Orchard Hills to Warragamba Pipeline

- ongoing deliveries of rail track, materials, machinery and equipment to the project alignment at Lansdowne Road and Patons Lane. Rail dragging from the surface to the tunnel between Orchard Hills and St Marys and along the mainline between Orchard Hills to Warragamba Pipeline
- installation of cable containment and hydrant pipes inside the tunnels and on the surface of the alignment
- service utility installations and surveying
- concreting and formwork for between the tracks and the track alignment
- combined service route installations
- rail track and drainage installations
- installation of light pole footings and light pole structure
- installation of overhead wire structure and cable pulling
- cable pulling along the alignment
- ongoing deliveries of materials, machinery and equipment to the site compounds at Kent Road.

Other works in the area

Bush Regeneration works

- inspection and assessment of sites for planned future works
- removal of weeds by hand and using hand tools
- spot spraying of herbicides
- use of chainsaws to cut woody weeds and applying herbicide to the cut surface (“cut and paint” method)
- surveying works and placement of markers to verify site boundaries and fence lines.

Work hours:

Standard construction hours are **Monday to Friday** from **7am to 6pm** and **Saturdays** from **8am to 1pm**.

Some work will be required to take place outside our standard construction hours to minimise traffic impacts or to ensure the safety of pedestrians, motorists and our workers. Out-of-hours work activities will be carried out in line with the project Environmental Protection Licence, Road Occupancy Licences, and Transport for NSW requirements.

Out-of-hours work includes:

- delivery of oversized equipment, machinery and materials
- precast beam delivery and installation at Orchard Hills Station
- 24/7 tunnel-related activities
- extended work hours for excavation, formwork, reinforcement and concrete pour, steel fixing, concrete pours and concrete finishing works inside the station box at the Orchard Hills site and at the Stabling Maintenance Facility across various structures including the Operations Control Centre (OCC) and Maintenance and Administration Building (M&A)

- dewatering activities at the Orchard Hills and Stabling Maintenance Facility sites
- concrete batching plant operations at the Orchard Hills Station site
- construction of the new 132kV powerline
- on-going combined services route (CSR) works and trunk service installation
- concreting and formwork for the viaducts
- rail track installations
- service utility installations and surveying
- installation of light pole structure and cable pulling
- overhead wire structure installation and cable pulling

Impacted surrounding residents and businesses will be notified in advance of any out-of-hours work.

What to expect:

- mitigation measures will be in place to minimise impacts including installing noise blankets where feasible, respite periods during high noise activities, noise and vibration monitoring, and water carts for dust suppression
- increased light and heavy vehicle movements on surrounding roads, and local road closures. All vehicles will be turned off when not in use, non-tonal reversing alarms will be fitted to plant and machinery and trucks will avoid reversing into and on site, where feasible
- temporary lighting to ensure a safe worksite will be directed away from properties
- communication will be limited to radios only when moving and unloading equipment, with no use of horns or loud radios
- traffic control and signage to safely assist motorists, pedestrians, and cyclists
- livestock should be monitored, as nearby activity may generate noise that could unsettle animals.

Equipment used:

Equipment used will include, but is not limited to, excavators, cranes, dozers, graders, rollers, vacuum truck, water carts, heavy and light site vehicles, generators, survey equipment, traffic management devices, concrete agitators, pneumatic drills, concrete saws, bobcats, chainsaws, telehandlers, non-powered and powered hand tools (including hammers and drills), franna crane, GenSet, Elevated Working Platforms (EWP's)and light vehicles.

Changes to traffic, pedestrian, and cyclist routes:

During these works, traffic control will be in place to assist motorists, pedestrians, and cyclists with any changes to traffic conditions. This may include contraflow (managed directional changes to the flow of traffic) and stop-slow traffic controls. The time of these changes will vary and are dependent on road authority approvals.

Access to driveways and buildings will be maintained at all times. Residents will be separately notified if access to driveways is affected, or access to private property is required.

Three-month out-of-hours lookahead activities:

Activity	Equipment	Work hours	Timing
SSTOM works – Orchard Hills Metro Station site			
Concrete pours and finishing work in station box	Concrete pump, concrete agitator, concrete vibrator, helicopter, screed, hand drill, non-powered hand tools (including hammers), franna, GenSet, light vehicles	6pm to 12am, and 5am – 10pm - Monday to Friday 6am to 6pm, Saturdays	Ongoing - 2025
Works within the station box to support the tunnel and underground station box fit out	Gantry Crane (Electric), telehandler, excavator, front end loader, hand drills	24 hours a day, seven days a week	Ongoing - 2025
Concrete batching plant operations	Drives and conveyors, front end loader, concrete loading, concrete slumping, concrete truck, light vehicles	5am to 10pm, Monday - Friday. 6am to 6pm Saturday	Ongoing - 2025
Installation, incoming and outgoing deliveries of oversized construction material	Oversize, over mass (OSOM) franna, mobile crane, gantry crane (Electric), telehandler, excavator, front end, loader, hand drills	10pm to 7am	Ongoing - 2025
Oversized plant and equipment activities	OSOM, franna, mobile crane	10pm to 7am	Ongoing - 2025
Tree removal on Kent and Lansdowne Road	Crane, light vehicles, traffic management for lane closure on kent road and hand tools.	7am to 6pm	August 2025 – September 2025
SSTOM works – Stabling Maintenance Facility site			
Extended work hours for CSR works	Excavators, day makers, trench roller, light vehicles	6pm to 2am Monday to Friday (inclusive) 1pm to 6pm Saturday. Note: To continue if consented to by the community.	Ongoing - 2025
Concrete pours and finishing works, steel fixing	Operations Control Centre (OCC) and Maintenance and Administration Building (M&A) Generator, light vehicles, concrete pump concrete agitator, daymaker	6pm to 12am and 5am to 7am Monday to Friday 6am to 6pm, Saturday	Ongoing - 2025
Extended work hours for use of oversized plant and equipment activities	Traffic management, light and heavy vehicles, generators, lighting towers and mobile cranes.	10pm to 7am	Ongoing - 2025
SSTOM works – Linewide			
Concreting and formwork Oversized deliveries of plant and materials	Excavators, cranes, dump trucks, water carts, heavy and light site vehicles, generators, traffic management devices,	7am Mondays through to 6pm Saturdays (24 hours)	September 2025 – April 2026

Rail track installations, cable pulling, Service utility installations and surveying	concrete agitators, pneumatic drills, concrete tools and hand tools.	Note: To continue if consented to by the community.	
---	--	---	--

Feedback:

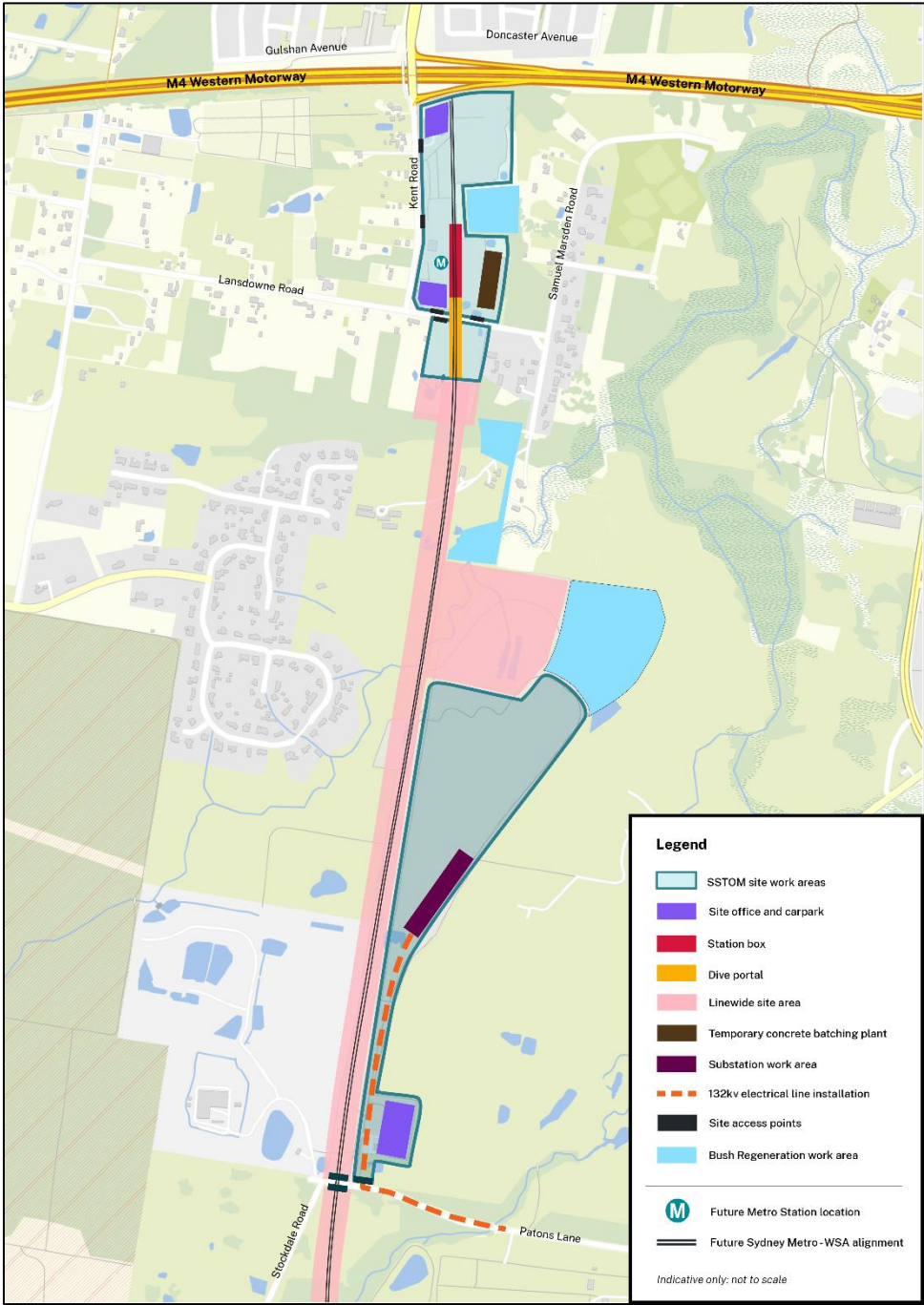
Detailed Noise and Vibration Impact Statements (DNVIS) have been prepared, including proposed mitigation measures based on noise modelling. Your feedback on appropriate respite periods or mitigation measures is encouraged. The SSTOM Community Engagement strategy is online.

Please visit parklifemetro.com.au to view these documents and contact us to provide any feedback.

If you would prefer to receive updates by email, please let us know via sydneymetrowsa@transport.nsw.gov.au and we will add you to the distribution list.

Thank you for your cooperation while we complete this essential work.

Work areas:



Stay connected through the Sydney Metro Connect App.

Access information in over 100 languages Download **Sydney Metro Connect** from the App store™ or get it on Google Play™.

For more information contact



24-hour Community Information Line **1800 717 703**

sydneymetrowsa@transport.nsw.gov.au

Sydney Metro – Western Sydney Airport
PO Box K659, Haymarket NSW 1240



If you need help understanding this information, please contact the Translating and Interpreting Service on **131 450** and ask them to call us on **1800 717 703**.