

Mr [REDACTED]
Team Leader Compliance – Government Projects
Department of Planning, Housing and Infrastructure
Locked Bag 5022
PARRAMATTA NSW 2124

6 June 2025
Ref: 170108-ER_DPHI May 2025

Dear [REDACTED]

RE: Sydney Metro City and South West – ER Monthly Reports for May 2025

Healthy Buildings International (HBI) submits this report to the Secretary in accordance with:

- Condition A26 (j) of the Sydney Metro Sydenham to Bankstown Upgrade SSI_8256 Approval (12 December 2018) and associated modifications MOD1_Bankstown Station and Mod 2_Modification to A9, D3 and E53.

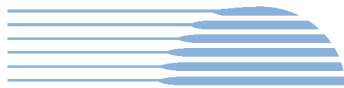
The attached summaries detail the key activities undertaken by Environmental Representatives for Sydney Metro – City and South West Sydenham to Bankstown for the month of **May 2025**.

It is noted that Sydney Metro - Sydenham to Bankstown - SSI 8256 MOD 2 - Modification to A9, D3 and E53 has been approved by NSW Planning on 3 June 2025.

Yours sincerely

[REDACTED]
Environmental Representative

Cc: Sydney Metro: [REDACTED]
AA: Available on Sydney Metro Website
Contractors: Available to Contractors on Sydney Metro Website
DPHI Compliance: Portal
DPHI Post Approvals: Available on Sydney Metro Website



HBI

Healthy Buildings International Pty Ltd

Table of Contents

1.	Sydenham to Bankstown – TSOM.....	3
2.	Southwest Metro Corridor Package 3 (SWM3) JHLOR	4
3.	Errant and Hostile Vehicle Mitigation Treatments (EHVMT)	8
4.	Sydney Metro Retained Obligations (SM).....	12
5.	Statement of Limitations	13

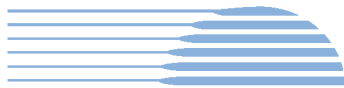
1. Sydenham to Bankstown – TSOM

Project Approval	Contract Package	EPL	Environmental Representative/s
SSI 8256 (S2B)	Train Service Operation and Maintenance (TSOM)	JHLOR EPL 21147 – MTR is working under JHLOR CEMP, and subplans SSI 8256	
Key Construction Activities During the Period			
<ul style="list-style-type: none"> ▪ Southwest corridor and stations <ul style="list-style-type: none"> • Installation of field devices • Cable hauling within the station platform buildings • Testing and commissioning of cabinets 			
Key Construction Activities Look Ahead			
<ul style="list-style-type: none"> ▪ Southwest corridor and stations Marrickville, Dulwich Hill, Hurlstone Park, Canterbury, Campsie, Belmore, Lakemba, Wiley Park, Punchbowl and Bankstown Stations: <ul style="list-style-type: none"> • Cable haul to the station platform buildings • Cabinet installation • Cable haul to field equipment devices • Installation of field equipment devices throughout the station and surrounding areas • Termination of cabling to field equipment • Testing and commissioning of cabinets and field equipment 			
ER Inspections			
<ul style="list-style-type: none"> ▪ The works at station platform and Metro Service Buildings (MSBs) such as cable pulling were observed by the ER while inspecting SWM3 sites, no issues were raised. 			
Photos			
<ul style="list-style-type: none"> ▪ N/A 			
Endorsed Document/s			
<ul style="list-style-type: none"> ▪ Nil 			
Non-compliance/ Incidents or Repeat Complaints			
<p>Sydney Metro has been providing summaries of complaints to DPHI daily and a summary to the ER. Responses to each complaint have been noted in each complaint report, with follow up actions often defined in revised reports. Key or repeat items of note are discussed below for the respective projects.</p> <p>There were no incidents for TSOM reported to the ER under condition A36 of SSI 8256.</p> <p>One non-compliance was reported to the ER during the reporting period:</p> <ul style="list-style-type: none"> ▪ 14/04/2025 – MCoA C7 – Cable containment works in the close proximity to heritage fabric were not undertaken in accordance with the approved design <p>Project related complaints:</p> <ul style="list-style-type: none"> ▪ 20/05/2025 – Traffic, transport, parking, worker behaviour <p>Unrelated Project complaints:</p> <ul style="list-style-type: none"> ▪ Nil 			
Audits			
<ul style="list-style-type: none"> ▪ No audits 			
Looking Forward – Core Focus Areas			
<ul style="list-style-type: none"> ▪ Works at platforms within close proximity of heritage listed stations ▪ Testing and commissioning between Sydenham and Bankstown 			



2. [Southwest Metro Corridor Package 3 \(SWM3\) JHLOR](#)

Project Approval	Contract Package	EPL	Environmental Representative/s
SSI 8256 (S2B)	Southwest Metro Corridor Package 3 (SWM3) JHLOR	#21147	
Key Construction Activities - During the Period			
<ul style="list-style-type: none">Project wide: Energisation is now complete, defect works ongoingBelmore Triangle: Laydown area operations ongoing including material stockpiles and concrete and liquid waste managementCanterbury Compound: Site offices and amenities, fuel and gas storage; implementation of the weed management planNorth Terrace Compound, Bankstown: Site offices and amenities, fuel and gas storagePunchbowl Station: Platform works ongoingCampsie: Platform works ongoingMarrickville Station: Platform works ongoingCanterbury Station – Platform works ongoingBelmore Station – Platform works ongoingWiley Park: Ongoing updates to the Tree Report. Platform works ongoing.Bankstown Station: Block work, brick work, roofing installation ongoing on Sydney Metro side building, Sydney Trains side platform works and track turnout installation ongoing, CSR works ongoing.Security fence installation, including ongoing tree impact assessment, pruning, removal and ecologist supervision. Some sections adjacent to Threatened Ecological Communities (TECs) and threatened species, e.g. Breust Street ramp (Punchbowl), Urunga Parade (Punchbowl), South Terrace (Bankstown)Survey of trees in station precincts continued to verify compliance with the SPIROngoing operation of site office caravans at selected Metro Services Buildings (MSBs)Stockpile management including waste classification, waste tracking, load-in / load-out, management of site accesses and truck routes			
Key Construction Activities Look Ahead			
<ul style="list-style-type: none">Survey and defect inspections at all stationsBankstown Station works including extension and resurfacing of platforms to accommodate 8 car trains and track turnout upgrades on the Sydney Trains side (63 days shutdown from 28 April 2025 to mid-July 2025)Testing and commissioning between Sydenham and BankstownPlatform works at all stations			
ER Inspections			
<p>One ER inspection was conducted in the reporting period on 20 May 2025. No new actions were raised. Material storage within tree protection zone at Bankstown was discussed on site with the contractor which was later addressed by the contractor with correspondence from the project arborist confirming no impact to the mature tree from storage of light weight material.</p>			



HBI

Healthy Buildings International Pty Ltd

Photos



Figure 1 – Canterbury Station – Platform works including lead removal, asphalt removal and roofing ongoing.



Figure 2 – Canterbury Station – Platform roof installation works ongoing.



Figure 3 – Canterbury Station – Foot bridge works ongoing.



Figure 4 – Bankstown Station - Station Works: Mechanical, electrical and plumbing works ongoing including LV rough in, storm water pipes work.



Figure 5 – Bankstown Station – Steel works completed, internal fitout, brick and block works ongoing.



Figure 6 – Bankstown Station – Brick works nearly complete at the new Sydney Metro side platforms.



Figure 7 – Bankstown Station – Laydown area in use.



Figure 8 – Bankstown Station – Onsite Detention tanks installation works progressing well.



Figure 9 - Bankstown - Sydney Trains side platforms – heritage protection works progressing well.



Figure 10 - Bankstown - Sydney Trains side platforms – asphalt removal complete.



Figure 11 – Bankstown Station – Sydney Trains side – track works ongoing.

Endorsed Document/s

- SMC CTR Q3-Q4 2024 – 20 May 2025

Non-compliance/ Incidents or Repeat Complaints

Summaries of CSW complaints are now received on a weekly basis. Complaints are discussed where relevant for each package below

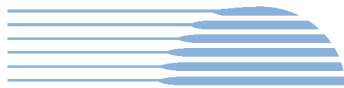
There were two non-compliance reported to the ER during the period.

- 28/05/2025 – NCR - REMM B4 relating to impacts to Downy Wattle Turpentine – Grey Ironbark vegetation
- 25/04/2025 – NCR - C7 - Notification not completed in accordance with EPL

There were no incidents reported to the ER under Condition A36 of SSI 8256.

During the period, one Class 3 environmental incident was reported to the ER, which was unrelated to JHLOR. No other Class 3 environmental incidents were reported:

- 06 May 2025 – Bankstown compound ablution block overflow



The ER is aware of the following complaints received in May 2025 related to the SWM3 works. The number of noise complaints increased mainly due to rail shutdown possession activities in this reporting period compared to the previous month:

- One complaint related to noise and vibration, OOHW, worker behaviour, traffic, transport and parking
- One complaint related to traffic, transport and parking
- One complaint related to worker behaviour
- Four complaints related to noise and vibration (OOHW)

Audits

No further ER input with regards to SWM3 audit

Summary of Environmental Performance

Environmental risks are consistent with out of hours works during possessions and maintaining compliance with the Tree Report during the security fence installation. Actions raised during ER inspections are closed out within the agreed timeframe with useful supporting documentary evidence provided.

Looking Forward – Core Focus Areas

- Management of ERSED controls generally
- Management of noise during out-of-hours work during possessions
- Management of tree impacts and TECs during construction of security fencing along the alignment, and maintenance of the buffer zone
- Compliance with the planning approval for the use of land outside the project boundary, including the establishment and use of ancillary facilities



3. Errant and Hostile Vehicle Mitigation Treatments (EHVMT)

Project Approval	Contract Package	EPL	Environmental Representative/s
SSI 8256 (S2B)	Errant and Hostile Vehicle Mitigation Treatments (EHVMT) Martinus Rail	No EPL	
Key Construction Activities - During the Period			
<ul style="list-style-type: none"> ▪ Illawarra Road - Ongoing footpath excavation and utilities relocation ahead of concrete barrier works ▪ Livingstone Road – Form Reo Pour (FRP) works underway ▪ Albermarle Street – Girder delivery and placement complete ▪ Wardell Road - Traffic Management Plan (TMP) implementation, line marking and road barrier removal ▪ Garnett Street - FRP works underway ▪ Duntroon Street – Piling works completed ▪ Melford Street - All piles excavated, concrete poured and FRP works ongoing ▪ Canterbury Road – Footpath works near Canterbury signal hut ongoing, works on overbridge to commence soon, piling works recommenced ▪ Loch Street – TMP implementation ▪ Burwood Road - Piling works complete, barrier installation works ongoing ▪ Moreton Street – Planning for works is ongoing ▪ Haldon Street – Site preparation works ongoing ▪ King Georges Road - Piling works completed, concrete pouring ongoing ▪ Punchbowl Road - TMP Stage 1 implementation, anti-throw screens removal upcoming ▪ Stacey St – TMP implementation with stage 2 of hydro demolition works ▪ Carnation Ave – Concrete barrier works complete 			
Key Construction Activities Look Ahead			
<ul style="list-style-type: none"> ▪ Punchbowl Road, Punchbowl – Removal of steel barriers and concrete pours for the southwest retaining wall ▪ Melford St, Hurlstone Park – Installation of off-structure beams (OSB) bridge girders ▪ King Georges Road, Wiley Park – Installation of pre-cast barriers ▪ Burwood Road, Belmore – Installation of pre-cast barriers ▪ Albermarle St, Dulwich Hill – Sydney Trains HV feeder 761 removal, delivery and installation of the off-structure beam, demolition of existing balustrade fence, installation of screens ▪ Duntroon St, Hurlstone Park – Lifting of off-structure beams using crane ▪ Livingstone Road, Marrickville – Remediation works, service searching ▪ Illawarra Road, Marrickville - Reinstatement of existing signal pole and piling ▪ Canterbury Road, Canterbury – Overbridge remedial works, service searching and modification of northeast hoarding ▪ Loch St, Campsie – Overbridge remedial works and modification of northeast hoarding ▪ Haldon St, Lakemba – Piling works on the north side of the rail corridor ▪ Punchbowl Rd traffic controls implementation and anti-throw screens removal ▪ Haldon St - Piling pad preparation works 			
ER Inspections			
<ul style="list-style-type: none"> ▪ ER inspections are undertaken based on scope/risk levels of the activities. One ER inspection was undertaken in the reporting period on 26/05/2025 with the key focus on erosion and sediment controls and tree protection zones management. No new issues were raised during the inspection. 			

Photos



Figure 1 – Stacey St, Bankstown – Erosion and sediment controls in place around stormwater drains.



Figure 2 – Stacey St, Bankstown – Planning for bridge protection works underway.

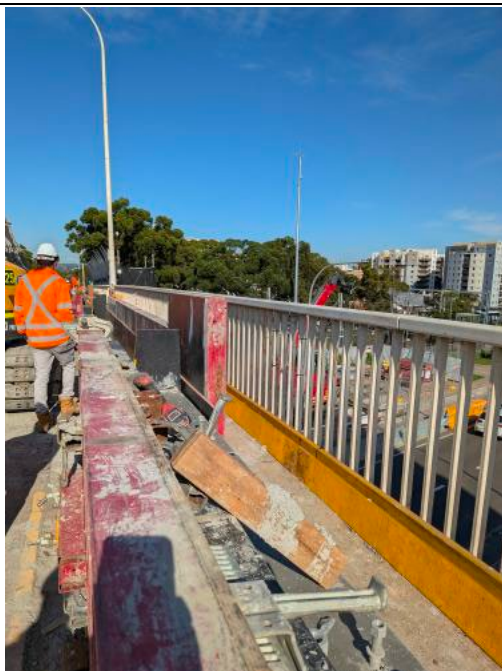


Figure 3 – Stacey St – Footpath works ongoing.



Figure 4 – Stacey St overbridge - FRP and excavation works underway.



Figure 5 – Moreton Street – Piling works are almost completed, with preparation works for a bridge girder lift and placement in planning for WE52.



Figure 6 – Moreton Street – The contractor reported that piling rig would be demobilised from the area shortly after the works completion. No damage to grassed area/kerb/nearby trees was observed during inspection.



Figure 7 - Railway Pde, Wiley Park - Concrete barrier installation nearing completion.



Figure 8 - Loch Street – Utilities relocation completed, footpath works continuing.

Endorsed Document/s

- Minor Ancillary Facility Checklist – South Terrace, Bankstown – Rev B – 08/05/2025
- OOHW#18 – Rev A – 31/05/2025

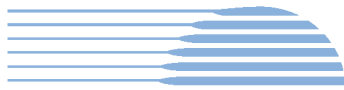
Non-compliance/ Incidents or Repeat Complaints

Since commencement of City metro services passenger operations on Monday 19 August 2024, Sydney Metro is now providing summaries of CSW complaints on a weekly basis (was provided daily until 16 August 2024) to DPHI and ERs covering complaints related to remaining construction works.

There was no non-compliance reported to the ER during the reporting period.

There were no incidents reported to the ER under Condition A36 of SSI 8256.

There was no Class 3 environmental incidents reported to the ER during the reporting period.



ER is aware of the following complaints received during the reporting period. The number of noise related complaints increased compared to the previous month due to OOHW activities increasing especially at Canterbury Station and overbridge:

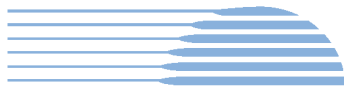
- Eight complaints related to standard construction hours/out-of-hours noise
- One complaint related to property damage
- One complaint related to business impacts
- One related to traffic, transport and parking

Audits

No ER involvement in audit activity including Independent Environmental Audits.

Looking Forward – Core Focus Areas

- Management of erosion and sediment controls generally
- Management of noise and dust during out-of-hours works
- Management and protection of retained heritage items
- Management of TECs



4. [Sydney Metro Retained Obligations \(SM\)](#)

Project Approval	Contract Package	EPL	Environmental Representative/s
SSI 8256 (S2B)	Sydney Metro Retained Obligations (SM)	Not applicable	
Key Construction and other Activities			
SM	▪ Working with MTR for various dynamic testing related activities for Southwest		
ER Inspections			
	▪ Nil		
Endorsed Document/s			
SM	▪ Nil		
Non-compliance/ Incidents or Repeat Complaints			
Since commencement of FPS, Sydney Metro now provides summaries of CSW complaints on a weekly basis to DPHI and ERs covering complaints related to remaining construction works. Key or repeat items of note are discussed below for the respective projects, where applicable or under respective CSW packages. No incidents were reported to the ER during the reporting period. No non-compliances were reported to the ER during the reporting period:			
Audits			
SM	Nil		
Looking Forward – Core Focus Areas			
SM	Collaborating with MTR and MTS to ensure the required documents are ready or the First Passenger Service.		

5. Statement of Limitations

Healthy Buildings International (HBI) has prepared this report in accordance with the requirements of Condition A24(l) of the Sydney Metro Condition A26(j) of the Sydney Metro Conditions of Approval (CSSI 17_8256). The report is for the sole purposes of Department of Planning, Housing and Infrastructure (DPHI) and Sydney Metro. It has been prepared based on generally accepted practices and standards at the time it was prepared. No other warranty, expressed or implied, is made as to the professional advice included in this Report. This report did not assess any aspects relating to safety.

Where the Report indicates that information has been provided to HBI by third parties, HBI assumes no liability for any inaccuracies in or omissions to that information.

This Report was prepared based on the conditions encountered and information reviewed for the period of reporting. HBI disclaims responsibility for any changes that may have occurred after this time.

This Report should be read in full. No responsibility is accepted for use of any part of this report in any other context or for any other purpose or by third parties. This Report does not purport to give legal advice. Legal advice can only be given by qualified legal practitioners.

Except as required by law, no third party may use or rely on this Report unless otherwise agreed by HBI in writing. Except as specifically stated in this section, HBI does not authorise the use or findings of this Report by any third party.

To the extent permitted by law, HBI expressly disclaims and excludes liability for any loss, damage, cost or expenses suffered by any third party relating to or resulting from the use of, or reliance on, any information contained in this Report. HBI does not admit that any action, liability, or claim may exist or be available to any third party.