



Tunnel boring machine (TBM) Dorothy at the entrance to the station box, with TBM Betty already on her way to Westmead

# Tunnelling breakthroughs at Parramatta

The NSW Government is delivering Sydney Metro West – a new underground metro railway which will double rail capacity between Parramatta and the Sydney CBD, link new communities to rail services and support employment growth and housing supply.

Sydney Metro West stations have been confirmed at Westmead, Parramatta, Sydney Olympic Park, North Strathfield, Burwood North, Five Dock, The Bays, Pyrmont, and Hunter Street in the Sydney CBD.

The Gamuda and Laing O'Rourke Consortium (GLC) is delivering the Western Tunnelling Package. The project involves nine kilometres of twin metro rail tunnels between Westmead and Sydney Olympic Park, excavation for two new metro stations, a stabling and maintenance facility at Clyde and a precast facility at Eastern Creek.

## Parramatta construction update

Tunnel boring machines Betty and Dorothy have carved their way into the station box at Parramatta, both arriving with pinpoint accuracy and a welcoming round of applause from GLC's Parramatta site team.

These latest tunnelling milestones mark the halfway point on the westward journey between Clyde and Westmead. To date, the 170-metre-long mega machines have built around 7 kilometres of tunnel each, and excavated a combined total of 1.25 million tonnes of hard rock.

They've also installed more than 48,000 concrete segments to line the tunnels along the way. The TBMs are expected to arrive at Westmead in late 2025.





An aerial view of the future development at Parramatta metro station.

## Parramatta development receives tick of approval

Plans to create a thriving new transport hub in the heart of Parramatta have received the tick of approval, with the Department of Planning, Housing and Infrastructure approving the Concept State Significant Development Application (SSDA).

The new metro station and proposed over and adjacent station development at Parramatta is a vital part of the revitalisation of the Parramatta CBD. The development will consist of four new buildings, including a mix of commercial and retail uses, as well as around 111 new homes.

The buildings and metro station below would be at the centre of an accessible transport hub, creating a connected employment, living and cultural centre in the heart of Greater Sydney's Central River City.

The development will provide easy access to alternative transport options, including Parramatta Station, a new bus interchange at Smith Street, and light rail stops at Macquarie and Church Streets.

The development plans for Parramatta were on public exhibition in late 2022. Stakeholders and the community were invited to have their say by making a submission to the Department of Planning, Housing and Infrastructure.

A Detailed SSDA will be prepared by the future development partner for Parramatta, outlining detailed building designs and responding to design considerations in the Concept SSDA.



**Visit the Sydney Metro West interactive portal to see a 3D model of Parramatta over and adjacent station development.**



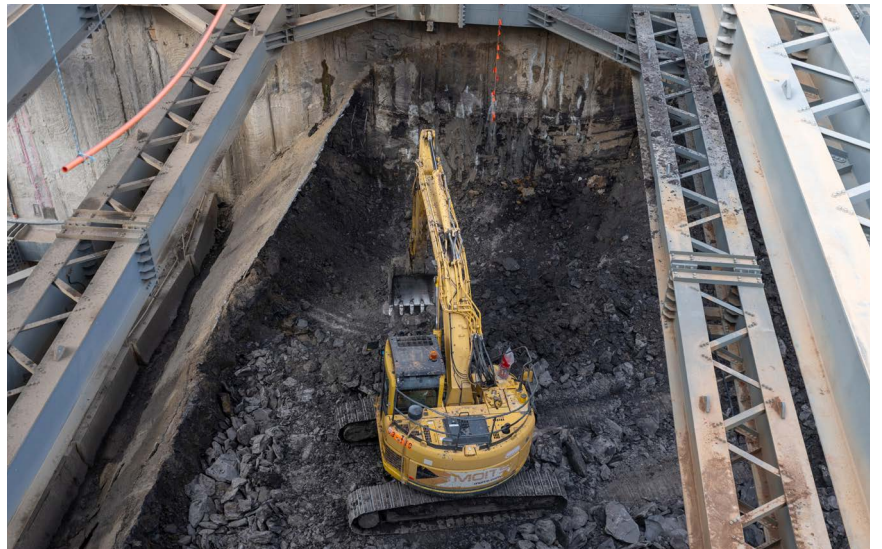
# Station box excavation continues

Meanwhile, construction activities are continuing in and around the station box.

Excavation on the eastern side of the box is complete and will continue on the western side, once both TBMs have moved on. In total, excavation of the station box is about 80 per cent complete.

To date, more than 330,000 tonnes of soil and rock has been removed from the site, using rock hammers, excavators and front-end loaders.

The station box (measuring 192 metres in length, 25 metres in width, and 28 metres in depth) is expected to be completed in 2026.



Digging deep: an excavator making steady progress



Construction underway in the heart of Parramatta



# History uncovered

Archaeologists on site are continuing to uncover the stories of Parramatta's past. Recent finds have been connected to thousands of years of Aboriginal occupation and Parramatta's commercial development, as the area transformed from an agricultural and convict settlement to an urban centre.

Following the discovery of thousands of artefacts and the presence of convict hut allotments, houses and businesses in earlier investigations, archaeologists have recently discovered:

- stone tools, potentially several thousand years old
- footings of early leaseholder Sarah Brabyn's brick cottage, dated to 1804
- remains of Ritchie's Ironworks, a local business that manufactured rolling stock for the railways in the 1880s
- around 25,000 artefacts, including a tea merchant token commemorating the opening of the 'Sydney Railway Line' in 1855, the first passenger railway line in NSW.



Artefacts found during archaeological investigations at Parramatta

Six-month look ahead and out-of-hours work activities							
Activity	Noise impact	August	September	October	November	December	January
Station box excavation, including removal of excavated material	Low to medium	●	●	●	●	●	●
Tunnelling	Low	●	●	●	●		
Archaeological investigations	Low	●	●	●	●	●	
Delivery of machinery, materials and equipment	Low	●	●	●	●	●	●
Geotechnical and utility investigations and upgrades within and around site	Low	●	●	●	●	●	●
Ongoing surveying within and around site	Low	●	●	●	●	●	●
● Standard construction hours   ● 24 hour work activities   ● Out of hours work							

**Contact us**  
If you have any questions or would like more information please contact our project team:

1800 612 173 Community infoline open 24 hours  
metro tunnelsGLC@transport.nsw.gov.au  
Sydney Metro West  
PO Box K659, Haymarket NSW 1240



**Translating and interpreting service**  
If you need help understanding this information, please contact the Translating and Interpreting Service on 131 450 and ask them to call us on 1800 612 173.



Access information in over 100 languages.  
Download **Sydney Metro Connect** from the App store or get it on Google Play.

