

Project update – Chatswood Dive Site

September 2025

Sydney Metro is Australia’s biggest public transport project.

Services started in May 2019 in the city’s North West with a train every four minutes in the peak. On 19 August 2024, services began on the new section of the M1 Line, including 15.5 kilometres of metro rail extending from the existing Metro North West at Chatswood, under the harbour and through the Sydney CBD and onto Sydenham. Commuters can now catch metro services every four minutes in the peak from new stations at Crows Nest, Victoria Cross, Barangaroo, Martin Place, Gadigal and Waterloo, and new metro platforms at Central.

RMA Group is carrying out remediation work within the residual land at Chatswood Dive Site. From August 2025, RMA Group is also delivering works to construct a new shared path along Mowbray Road. The path will provide a safe and convenient connection for pedestrians and cyclists, linking the Pacific Highway and Mowbray Road intersection to the extended Frank Channon Walk. The Mowbray Road shared path is designed to support future growth in active transport, complementing Willoughby Council’s new cycleway from Hampden Road to St Leonards.

Remaining work at Chatswood Dive Site

Standard project work hours are Monday to Friday, 7am to 6pm and Saturday, 8am to 6pm.

Location	Work during standard hours
Chatswood Dive Site residual land	<ul style="list-style-type: none">Remediation work including concrete saw-cutting and hammering, excavation, compaction, removal of contaminated soil and offsite disposal of the contaminated soilConstructing a driveway within the remediation site boundary, including placing and finishing concrete.The existing site hoarding will be adjusted to the location of new driveway. A hammer will be used to remove the steel post concrete.RMA will be remediating the driveway section leading into the remediation site. Activities will include excavation, concrete removal & disposal, fill removal and disposal, soil sampling & concrete placement.Soil sampling, ongoing noise & vibration monitoring & delivery of materials and equipmentGeneral maintenance activities as required for the operation of Northern Dive facility.

Out-of-hours work (night) work hours – due to the nature of some activities and for the safety of community and workers, some work will occur outside standard construction hours

Location	Out-of-hours work
Mowbray Road footpath between Pacific Highway and Frank Channon Walk	<ul style="list-style-type: none">The purpose of this work is to construct a shared path on Mowbray Road from Pacific Highway to connect to Frank Chanon walkway. The time for this work is from 8pm to 5am. All noisy work will be front loaded at 8pm. The Contractor will stop at 4am and clear plant and equipment to leave site by 5am.There are 29 service utility pits on the existing footpath. Between 1 – 22 September, the utility companies will raise pits to shared path level with excavation works to remove and replace pits.The shared path works will be designated into 4 zones – Zone 1 is from Mowbray Road intersection, Zones 2 and 3 is the site driveway and Zone 4 is from Pacific Highway.From 1 September to 12 September, works will be occurring in Zone 1. The Contractor will continue excavation of existing bitumen fill, addition of fill to raise the shared path levels, compaction of fill with roller, place formwork and place concrete.

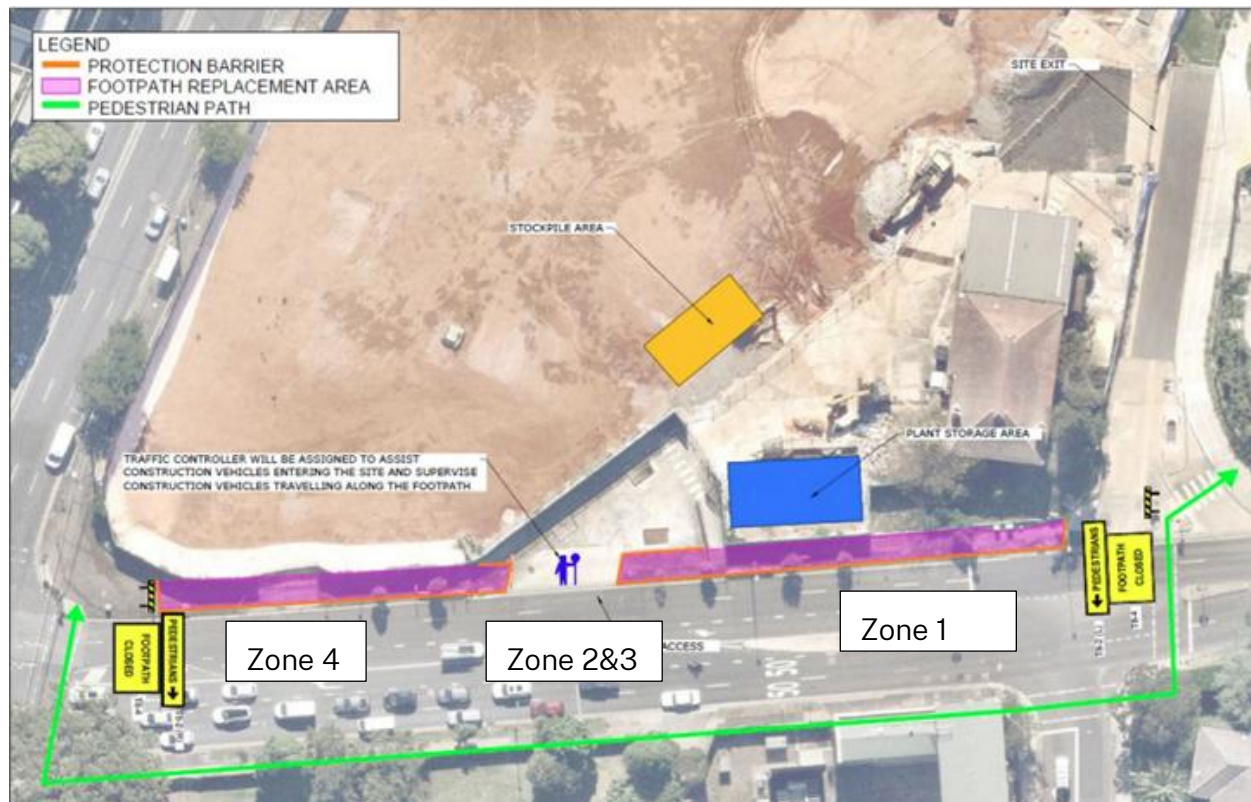


- From 18 September to 30 September, works will be occurring in Zone 2. The Contractor will excavate of existing bitumen fill, addition of fill to raise the shared path levels, compaction of fill with roller, place formwork and place concrete.
- On-going noise monitoring to ensure all noise stay within allowable limits.

What to expect

- Traffic control and directional signage will be in place to ensure the safety of workers, pedestrians, and community.
- The existing footpath along Mowbray Road will be closed for the duration of the works. Pedestrians will be guided to use the designated crossings at the Pacific Highway and Mowbray Road intersections. Traffic controllers will be on site to assist and ensure safe passage.
- To allow the work to be carried out safely, a single eastbound lane closure on Mowbray Road is planned during the following periods:
 - Weeknights: Monday to Friday, 8pm to 4am
- Construction equipment to be used includes hand tools, pit lifters, tipper trucks, concrete agitator trucks, concrete trowel machines, asphalt pavers, concrete saw, excavator, skid steer loader & vibratory roller. Night works will require lighting.
- Access to buildings and driveways will be maintained at all times.
- Some construction activities will generate noise. The project team will make every effort to minimise disruption, including the use of non-tonal reversing beepers and instructing workers to keep noise to a minimum. Noise monitoring will be ongoing to help ensure comfort for the local community.




Location of works



Thank you for your cooperation and understanding while we complete this essential work.

If you have any questions about the remaining work at the Chatswood Dive Site, please contact the Sydney Metro Project Communications Team by calling 1800 171 386 (24-hour community information line) or emailing sydneymetro@transport.nsw.gov.au

Contact us

-  24-hour Community Information Line **1800 171 386**
-  **sydneymetro@transport.nsw.gov.au**
-  Sydney Metro City & Southwest, PO Box K659, Haymarket NSW 1240



Translating and interpreting service

If you need help understanding this information, please contact the Translating and Interpreting Service on **131 450** and ask them to call us on **1800 171 386**