

Mr Rob Sherry  
Team Leader Compliance – Government Projects  
Department of Planning, Housing and Infrastructure  
Locked Bag 5022  
PARRAMATTA NSW 2124

7 August 2025

Ref:201208-ER\_DPHI-July 2025

Dear Rob

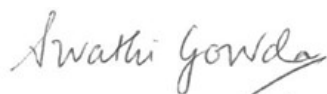
**RE: Sydney Metro - Sydney Metro West SSI - ER Monthly Report for July 2025**

Healthy Buildings International (HBI) submits this report to the Secretary in accordance with:

- Condition A30 (k) of the Sydney Metro West, Concept and Stage 1 SSI 10038 Approval (11 March 2021), and associated modifications (MOD 1 - 28 July 2021, MOD 2 - 3 June 2022, MOD3 – 4 July 2022, MOD 4 - 23 December 2022, MOD 5 – 20 September 2023 and MOD 6 – 6 November 2024); and
- Condition A32(k) of the Sydney Metro West – The Bays to Sydney CBD SSI 19238057 Approval (24 August 2022) and associated modifications (MOD 1 – April 2023, MOD 2 – October 2023, and MOD 3 – November 2024)

The attached summary details the key activities undertaken by Environmental Representatives for Sydney Metro – Sydney Metro West for the month of July 2025.

Yours sincerely



Swathi Gowda  
Environmental Representative

Cc:

DPHI: Major Projects Portal

Sydney Metro: John Ieroklis, Maria Doumit, Andrew Hendy, Cath Snelgrove, Ari Stypel, Ryan Butler, Sarah Kemp, Syed Shah, Valerie Lebon, Sarah Lepre

Contractors: Jared Lipton (AFJV), Steph Mifsud (GLC), Sally Reynolds (JCG)

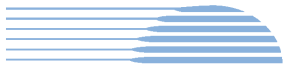


## Table of Contents

<b>1</b>	<b>Phase B - Central Tunnelling Package .....</b>	<b>4</b>
1.1	Key Construction Activities During the Period .....	4
1.2	Key Construction Activities Look Ahead.....	5
1.3	ER Inspections .....	5
1.3.1	Photos .....	5
1.4	Endorsed Documents .....	6
1.5	Complaints .....	7
1.6	Compliance.....	7
1.6.1	Incidents.....	7
1.6.2	Non-compliance and Potential Non Compliance .....	7
1.6.3	Audits .....	7
1.7	Looking Forward – Core Focus Areas .....	7
<b>2</b>	<b>Phase F – Western Tunnelling Package.....</b>	<b>8</b>
2.1	Key Construction Activities During the Period .....	8
2.2	Construction Activities Look Ahead .....	9
2.3	ER Inspections .....	9
2.3.1	Photos .....	10
2.4	Endorsed Documents .....	12
2.5	Complaints .....	13
2.5.1	Incidents.....	13
2.5.2	Non-compliance .....	13
2.5.3	Audits .....	13
2.6	Looking Forward – Core Focus Area .....	13
<b>3</b>	<b>Phase G – Eastern Tunnel Package.....</b>	<b>14</b>
3.1	Key Construction Related Activities During the Period .....	14
3.2	Key Construction Activities Look Ahead.....	15
3.3	ER Inspections .....	15
3.3.1	Photos .....	16
3.4	Endorsed document/s.....	17
3.5	Complaints .....	17
3.6	Compliance.....	18
3.6.1	Incidents.....	18
3.6.2	Non-compliance .....	18
3.6.3	Audits .....	18
3.7	Looking Forward – Core Focus Areas .....	18



4	Sydney Metro Retained Obligations and Other Activity .....	19
4.1	Key Construction Activities During the Period .....	19
4.2	Key Construction Activities Look Ahead.....	19
4.3	ER Inspections .....	19
4.3.1	Photos .....	19
4.4	Endorsed Document/s.....	19
4.5	Complaints .....	19
4.6	Compliance.....	19
4.6.1	Incidents.....	19
4.6.2	Non-compliance .....	19
4.6.3	Audits .....	19
5	Statement of Limitations.....	20
6	Appendix A – ER Document Endorsement Records (ETP only).....	21



## 1 PHASE B - CENTRAL TUNNELLING PACKAGE

The Environmental Representatives for Phase B of Sydney Metro West are:

- Michael Woolley
- Maulik Bapodara
- Swathi Gowda
- Jo Robertson

Phase B – Central Tunnelling Package (CTP) is being delivered by Acciona Ferrovia Joint Venture (AFJV). Phase B of Sydney Metro West has been further broken into:

- Phase B1: Civil works
- Phase B2: Tunnelling works

The AFJV hold EPL 21610 for this Phase of works. Activities defined as Phase B2-Tunneling Works in the Staging Report for Metro West commenced during the November 2022 reporting period at Burwood North. Substantial Construction was achieved under the CTP contract for the remaining sites. Rectification works were completed during the reporting period at Burwood North and SOP. AFJV are now acting in a Transitional Handover Services capacity.

### 1.1 Key Construction Activities During the Period

#### The Bays

- Handover of a section of the site to ETP Contractors where sewer works had been completed. Operation of the water treatment plant and management/maintenance of areas handed over including the tunnels.

#### Five Dock

- East and West Shaft sites: Completion of the clean-up and full demobilisation from the site. No works observed on site during site inspections. Runoff water being automatically pumped to the Bays for treatment.
- Use of house ongoing at 21 Waterview Street adjacent the eastern shaft by Sydney Metro personnel.
- Water in the shaft is directed to the Bays water treatment plant for treatment.

#### Burwood North

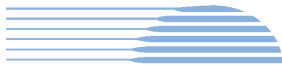
- Completion of remedial works in the nozzles and headwalls in the eastern end of the station box. Deliveries and unloading of items to the surface. Removal of items post completion of the rectification works.
- Water treatment plant not operating – general maintenance activities only.
- South Shaft: Use of site sheds for personnel as required. Removal of some items.

#### North Strathfield

- No works at the site which was locked up and no personnel on site permanently.
- Pumping of water from the station box to the Bays for treatment and discharge.

#### Sydney Olympic Park

- Completion of rectification works in the tunnel nozzles. Removal of remaining concrete ramp to the nozzles. Tunnel maintenance ongoing with minor repairs as required.



- Use of a workshop and laydown of materials at the surface for tunnellers
- Remaining site sheds are to be used to accommodate the workforce and remaining people from the Project Delivery Office which is to be vacated.
- Ongoing reduction of staff in the Project Delivery Office.

AFJV continue to manage all sites (except much of the Bays which has been handed over to ETP Contractors).

## 1.2 Key Construction Activities Look Ahead

- Ongoing activities as described above
- Some defect works ongoing across some sites and in the tunnels.
- Planned relocation of services pits in the station box at the Bays.
- Removal of plant and material from remedial works at BN and SOP in the nozzles.
- Ongoing operation of the water treatment plants at the Bays.
- Ongoing management/maintenance/caretaking of sites.

## 1.3 ER Inspections

There were two ER inspections conducted during the reporting period on Thursday 17<sup>th</sup> and 31<sup>st</sup> July. The frequency of ER inspections has been reduced due to the very limited scope of activities being undertaken and hence reduced environmental risks. Currently inspections are held fortnightly, with each site being inspected monthly. North Strathfield was not inspected during the month. There were no actions raised during the inspections in July.

### 1.3.1 Photos



Figure 1.1 Station Box (The Bays). Services pits in the base of the station box are to be moved.



Figure 1.2 Site sheds and laydown area (The Bays).

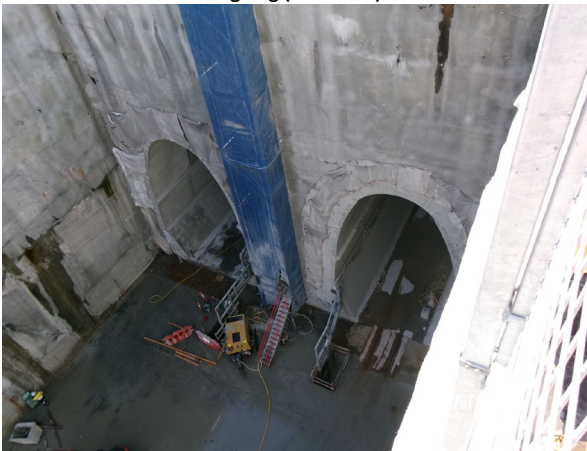




**Figure 1.3 Eastern Shaft – works completed – ongoing repairs and maintenance activities ongoing (Five Dock).**



**Figure 1.4 Western Shaft – works completed - repairs and maintenance activities ongoing (Five Dock).**



**Figure 1.5 Remedial works completed in the nozzles (Burwood North).**



**Figure 1.6 Station Box (Burwood North).**



**Figure 1.7 Laydown for materials on hardstand. Ongoing removal of items not required (SOP).**



**Figure 1.8 Remedial works completed in the nozzles (SOP).**

#### 1.4 Endorsed Documents

No documents were required to be signed, approved or endorsed during the reporting period.



## **1.5 Complaints**

Based on the monthly Sydney Metro Complaint Register issued for July 2025, there were two complaints reported for the month which was the same number as reported in June. One complaint related to a perceived risk of health issues from EMF at one site. The other complaint related to an observed lack of work occurring at Burwood North and Five Dock. The ongoing reduced number of complaints on the project correlates to the limited works being conducted at the CTP sites.

## **1.6 Compliance**

### **1.6.1 Incidents**

No Incidents as defined in the Infrastructure Approval were reported by AFJV during the reporting period.

### **1.6.2 Non-compliance and Potential Non Compliance**

No non compliances were raised by AFJV or Sydney Metro during the reporting period and none were observed by the ER.

### **1.6.3 Audits**

An Independent Environmental Audit is planned for the Metro West project in August 2025. It is understood that CTP will be included in the audit.

## **1.7 Looking Forward – Core Focus Areas**

- Ongoing management of sites during Transitional Handover Services.



## 2 PHASE F – WESTERN TUNNELLING PACKAGE

The Environmental Representatives for Phase F of Sydney Metro West are:

- Swathi Gowda
- George Kollias
- Michael Woolley
- Maulik Bapodara
- Jo Robertson

Phase F – Western Tunnelling Package (WTP) is being delivered by Gamuda Australia Laing O’Rourke Consortium (GLC).

GLC are constructing this Phase of Sydney metro West under EPL 21676.

### 2.1 Key Construction Activities During the Period

During the reporting period, the following activities were being undertaken at Westmead, Parramatta and the Clyde stabling and maintenance facility which includes the Rosehill, Clyde Dive and Clyde MSF construction sites:

#### Westmead

- Concrete defect repairs
- Station Cavern headwall install and steelfixing/scaffold installation
- Station Cavern arch formwork OOH (deliveries only) and installation
- Plenum slab pours

#### Parramatta

- Station Box:
  - TBM 1 enroute to Westmead
  - TBM 2 broken through and traversing station box
  - Strut and waler install and defect inspections
  - D-wall repairs (patching and waterproofing)
- Archaeology:
  - Zone 8c - Archaeological investigation and clearance works ongoing
  - Zone 9a and 9b - Archaeological investigation and clearance works commenced and continuing
- Other works
  - 240 Church St – Staged removal of container wall and installation of steel structure (nearly completed)
  - George St Heritage Shops – Mould remediation works

#### Rosehill

- TBM1 and TBM2 in production (towards Westmead)
- Cross passage excavation - XP83 and XP84 progressing
- Water Treatment Plant operation including off-site discharge is ongoing
- TBM material being taken off site and on-site for reuse
- Portion 2 handover preparation underway





### **Clyde Dive**

- Lining Erection Machine (LEM) re-launched and ring building ongoing
- Caverns and cross passage of spur tunnels ongoing
- FRP for offices above dive structure ongoing
- Formation around HV protection and utility slabs completed.
- Demolition of Acoustic Shed – removal of internals continuing (GLC reports on 16/07 – Delta scheduled to commence with their scope of work on 21 July 2025)
- Preparation works for boundary retaining wall and security fence installation

### **Clyde MSF**

- Final stormwater installation across site
- Close out of defects across Unwin St and Fleet St
- Potable watermain realignment works
- Bulk earth works and fill across MSF East and West ongoing
- Flood Basin excavation and construction
- Final retaining wall works including fencing installation ongoing
- Landscaping and chipseal application
- Treated PASS and bonded asbestos stockpiling

### **SOP**

- Handed over on 15 April 2025

## **2.2 Construction Activities Look Ahead**

The key construction activities planned are similar to those listed in Section 3.1, with the addition of the following:

- Various OOHW (conducted under EPL)
- Clyde Dive - Preparatory works for tree removal, boundary retaining wall and security fence installation

## **2.3 ER Inspections**

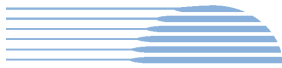
Currently, the sites are divided into two groups and visited typically fortnightly for ER inspections. The two groups are:

- Parramatta and Westmead
- Clyde Dive, Clyde MSF and Rosehill

Five ER inspections were conducted during the reporting period (04/07/2025, 09/07/2025, 16/07/2025, 23/07/2025 and 30/07/2025); with opportunities for improvement (OFIs) identified and the following actions (summarised) raised during the month:

### **Clyde Dive and Westmead**

- Nil



### Clyde MSF

- Deniehy Street site access/egress: Action raised for some maintenance required (removal of sediment near controls) following recent wet weather and additional controls installed to ensure cleaning of area does not influence kerb drains and drain covers installed.
- Fleet St (Gate 9): Tracking of material observed, post wheel wash use on section of Fleet St; with contribution to sediment/dirt build-up in section of gutter/kerb controls on Fleet St. Action raised for GLC to address maintenance of wheel bath, tidy up gutter and around kerb controls.

### Parramatta

- Action raised for maintenance (including re-install of drain guard) around two kerb drains on Macquarie Lane required.

### Rosehill

- Action raised to remove material build-up within gutter and along kerb drain controls (including replacement of any damaged controls) on Unwin St between Rosehill Gates 1 and 2.
- Action raised for maintenance, securing of and replacement of drain guards (where damaged) in Rosehill Laydown Area (Portion 2).

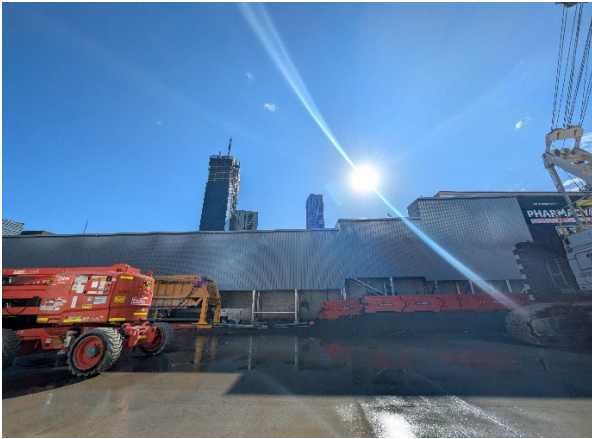
#### 2.3.1 Photos



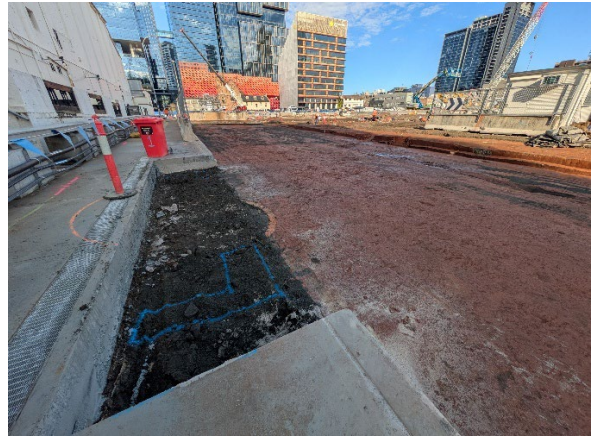
Figure 2.1- Parramatta Site: TBM 1 traversing through station box.



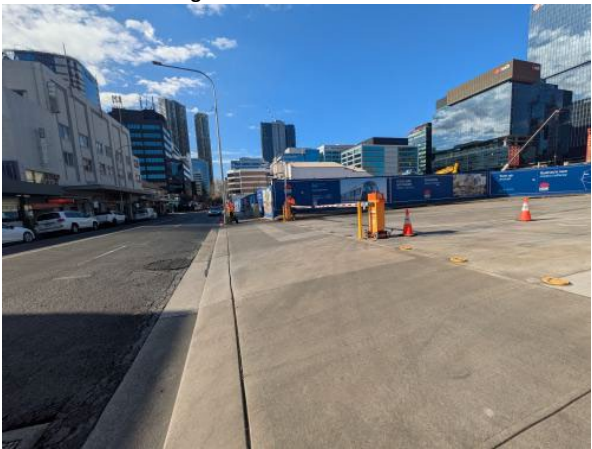
Figure 2.2- Parramatta Site: Site shed relocation preparatory works.



**Figure 2.3 – Parramatta Site: 240 Church St – Installation of steel structure and cladding.**



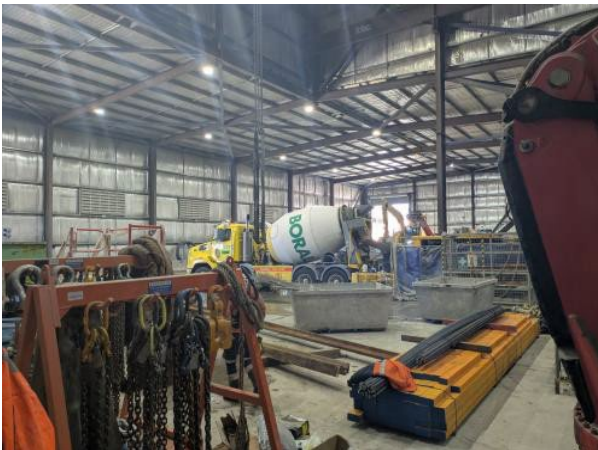
**Figure 2.4 – Parramatta Site: Zone 9a and 9b - Archaeological investigation and clearance works.**



**Figure 2.5 – Parramatta Site: Site access/egress observed to be satisfactory, at the time of the ER Inspection.**



**Figure 2.6 – Parramatta Site: George St Heritage Shops – Mould remediation works (no access).**



**Figure 2.7 – Westmead Site: Concrete delivery within shed.**



**Figure 2.8 –Rosehill Site: Laydown area tidy-up /rearrangement continuing in readiness for Portion 2 handover.**





Figure 2.9 – Clyde Dive Site: Lining Erection Machine (LEM) re-launched. GLC reports ring building ongoing.



Figure 2.10 – Clyde Dive Site: Final formation around HV protection and utility slabs completed and blinding layer poured.



Figure 2.11 – Clyde MSF Site: HV protection slab placement and Water Main works.



Figure 2.12 – Clyde MSF Site: Water cart mobilised and wetting down work area.



Figure 2.13 – Clyde MSF Site: Causeway construction.

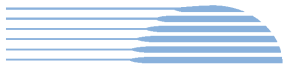


Figure 2.14 – Clyde MSF Site: Flood basin - hydromulching in progress.

## 2.4 Endorsed Documents

The following documents were approved or endorsed by the ER during the reporting period:

- Noise and Vibration Management Plan Rev I



## 2.5 Complaints

Based on the Sydney Metro Complaint Register for July 2025, there were six complaints reported during the month, compared to one complaint in June 2025. Of the complaints recorded in July 2025, one complaint was deemed as not related to SM activities as per the Complaints Register; with remainder complaints summarised below:

### Clyde

- Two related to property damage (dirt on vehicles)

### Tunnelling

- Two related to noise (Standard/OOHV); one of these complaints referred to jack hammering noise
- One related to property damage (cracks)

#### 2.5.1 Incidents

No incidents considered to represent Incidents as defined under the Project Approval were reported to or observed by the ER during the reporting period.

Class 3 incidents (predominantly related to spills and one related to a break in at the George Street Heritage Shops) reported under GLC/SM reporting system during the reporting period.

#### 2.5.2 Non-compliance

Two non-compliances reported to the ER during the reporting period are summarised below:

- Non-compliance recorded against Condition A31(b) by SM, for Consistency Assessment (Ref: SMW16 Consistency Assessment: George Street Shops remediation, October 2024) not being provided to the Environmental Representative (ER) prior to the commencement of the subject of work.
- Non-compliance related to the timely submission of the information required by Condition D51 to the AA and ER since Modification 6 amended Condition D51.

#### 2.5.3 Audits

Nil. Next IEA scheduled in late August 2025.

## 2.6 Looking Forward – Core Focus Area

The core focus areas for works (including upcoming works) are:

- Clyde MSF – Progressive stabilisation activities of portions of site
- Clyde Dive - Removal of acoustic shed, adjoining slabs and haul road
- Clyde Dive - Permanent boundary fence works (ATC boundary) including tree removal, retaining wall, drainage construction and security fence installation
- Utility works along local roads in the vicinity of Clyde MSF to relocate High Voltage and Low Voltage (HV/LV) route



### 3 PHASE G – EASTERN TUNNEL PACKAGE

The Sydney Metro West Eastern Tunnel Package is Stage 2 of the Sydney Metro West CSSI and is described as major civil construction works between The Bays and Sydney CBD, including station excavation at Pyrmont and Hunter Street and tunnel excavation between the Bays and Hunter Street. Stage 2 (SSI 19238057) was approved on the 24 August 2022.

The Environmental Representatives for the Sydney Metro West Eastern Tunnel Package are:

- Michael Woolley
- Maulik Bapodara
- Swathi Gowda
- Jo Robertson

The Eastern Tunnelling Package (ETP) is being delivered by John Holland CPB Ghella Joint Venture (JCG) with the contract being awarded in November 2022. Sydney Metro notified DPHI that the date of commencement of construction was 17 March 2023. JCG have received Environmental Protection Licence (EPL 21784) for the project.

#### 3.1 Key Construction Related Activities During the Period

Works conducted during the reporting period included:

##### Hunter Street East:

- Ongoing excavation and wall support of the southern portion of the site adjoining Hunter Street. Excavation with rock hammers occurring 7 days per week.
- Ongoing removal of the remaining contents of the former acoustic shed. Commencement of the removal of the concrete slab and footings under the former acoustic shed.
- Ongoing concrete deliveries and FRP activities for pours in the caverns. Use of air ventilation systems and other tunnelling support activities for works in the caverns.
- Use of the steel deck with access driveways to O'Connell Street and Hunter Street for load out of spoil using kibble and unloading frame.
- Completion of king piles to support the new section of the steel deck in the area of the former acoustic shed.
- Use of the crib sheds and offices over Richard Johnson Square.
- Use of the new water treatment plant under the steel deck. Water partially treated and directed to trade waste prior to full commissioning of the plant.

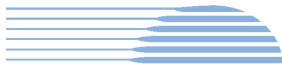
##### Hunter Street West:

- Use of the ramp at the eastern access to Hunter Street.
- Construction of footings for the steel deck.
- Wall support around the perimeter of the excavation with shotcrete and rock anchors.
- Ongoing excavation of the shaft, particularly in the southern side of the site using rock hammers.
- Waterproofing works completed on the external face of Skinners Hotel with a lime rich render.
- Management of water in rainy conditions.
- Ongoing deliveries and pedestrian management along Hunter Street after its closure outside the site.
- Noted that the Milligan's development continued on the site adjacent Hunter Street West with scaffolding set up around the largest building on the corner of Pitt Street and Hunter Street prior to its demolition. The building to the east of Pangas House demolished to allow for set up of a load out area.

##### Pyrmont East:

- Completion of the excavation of the shaft and pouring of concrete blinding layer. Ongoing preparation for re-launch of the TBMs such as construction of the thrust frame and grout sealing ring.
- Ongoing excavation of the station and cross over caverns with road headers and rock hammers. Set up for traverse of the TBMs.
- Spoil load out by kibble and gantry crane in the permanent shaft and from the tunnelling activities in the temporary shaft within the acoustic shed. Volumes of load out reduced with shaft excavation completion.





- Ongoing use of the tunnel ventilation system including scrubber units in the caverns.
- Use of site amenities/sheds on the steel deck to the east of the acoustic shed and use of one lane on Union Street for storage of containers and a sub-station.
- Ongoing treatment of water generated from tunnelling activities and groundwater. Discharge of treated water to stormwater system.

**Pymont West:**

- Breakthrough of both TBMs from The Bays into the cross over cavern. Commencement of TBM traverse across the cavern. Ongoing works to allow traverse of the TBMs such as concrete pours for blinding and TBM modules, module installation.
- Ongoing excavation of the shaft using rock hammers.
- Ongoing excavation of the services adit by Road Header. A scrubber unit was set up to treat dust from the operation.
- Ongoing use of the kibble for loading out spoil onto trucks. Trucks exiting to Pymont Street.
- Drainage of water to the tunnelling operations.

**The Bays:**

- TBM breakthrough into Pymont cross over cavern and traverse, hence slurry plant not operating. Ongoing excavation and construction of cross passages XP8-XP12.
- Water treatment and discharge using the construction water treatment plant.
- Maintenance of the slurry treatment plant; spoil shed and related equipment while the TBM is not tunnelling.
- Receival and storage of spoil from Hunter Street and Pymont sites and load out spoil.
- General support activities such as in the workshops, segment delivery and storage and use of site offices.
- Use of the truck marshalling area by trucks waiting to load up and/or attend other project sites.
- Use of a new staff car parking area on the former CTP spoil shed area.
- Raising of a small section of land recently handed over from CTP using spoil from the project and capping with concrete to form additional car parking areas.

**3.2 Key Construction Activities Look Ahead**

The below works are planned to occur in the following reporting period:

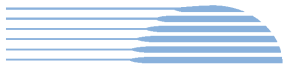
- Ongoing activities as described above.
- Ongoing traverse of the TBMs across the caverns and shafts to re-commence tunnelling.
- Ongoing excavation of the western shaft. Ongoing excavation of the caverns as required to allow TBM traverse. Load out of spoil.
- Ongoing removal of the remaining parts of the former shed at Hunter Street East and removal of the slab and footings.
- Ongoing excavation and construction of cross passages in the tunnel between Pymont and the Bays.

**3.3 ER Inspections**

Four ER inspections were conducted during the reporting period on each Tuesday in July. The following actions were raised during the inspections:

- Further investigate the source of the water leak at Hunter Street west, and if none found, ensure that the leak on the footpath is reported appropriately.
- Effectively control wash water from washing truck wheels at Hunter and ensure no turbid water enters the drain in the gutter in Hunter Street outside the Hunter West site.
- Install ERSED controls under the gate at the Truck Marshalling Area at the Bays.
- Ensure tracking of dirt is minimised and managed effectively at the Pymont West shed.

JCG were responsive to ER feedback during inspections and for the close out of actions raised.



HBI

Healthy Buildings International Pty Ltd

### 3.3.1 Photos



Figure 3.1 Hunter Street East: Former Acoustic Shed area. Ongoing removal of remaining items of and within the shed.



Figure 3.2 Hunter Street East: Excavation adjacent Hunter Street and load out of spoil from the steel deck.



Figure 3.3 Hunter St West: Wall support including anchors and shotcreting.



Figure 3.4 Hunter Street West: Ongoing excavation; wall support and steel deck footings.



Figure 3.5 Pyrmont East: Shaft excavation completed. Works in the nozzles to prepare for TBM re-launch.

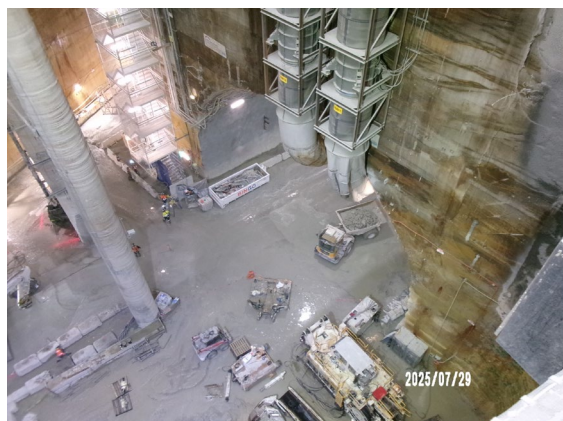


Figure 3.6 Pyrmont East: Eastern end of the station cavern.





Figure 3.7 Pymont West: Excavation of shaft ongoing.



Figure 3.8 Pymont West: Services adit.



Figure 3.9 The Bays: Use of water cart for dust suppression.



Figure 3.10 The Bays: Spoil handling.

### 3.4 Endorsed document/s

The following documents were signed, approved or endorsed during the reporting period.

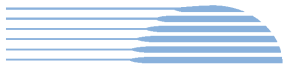
- Minor Ancillary Facility Application - The Bays Laydown

The ancillary facility comprised a laydown area in the former carpark area for the storage of steel re-enforcing and other items for the Pymont site for cavern lining.

### 3.5 Complaints

The monthly Sydney Metro complaint register for July 2025 indicated nine complaints were reported to the Project that related to ETP activities. This compares to 11 complaints received in June 2025.

Four of the complaints related to noise from the Hunter Street East site. Two complaints related to noise during standard hours and one related to noise during OOHs. One complaint related to both OOHs and standard hours work. The complaints correlate to nighttime deliveries; works to demolish the former acoustic shed and continued excavation for the shaft in the area adjacent Hunter Street with excavation activities occurring up to seven days a week. It is understood there are ongoing discussions between JCG and various complainants in the vicinity of the Hunter Street East site.



Three complaints related to noise at Pyrmont (including OOHs and works during standard hours). One complaint related to the underground acquisition process. Three of the four complaints at Pyrmont were from one resident.

One project complaint was related to driver behaviour and vehicle damage.

### **3.6 Compliance**

#### **3.6.1 Incidents**

No incidents considered to represent an Incident as defined under the Project Approval were reported to the ER during the reporting period.

#### **3.6.2 Non-compliance**

One Non-Compliance report (NCR) was issued by JCG for works in the area of the Ancillary Facility for the Carpark and Truck Marshalling area that had not been described or assessed in the Ancillary Facility memo that assessed the works under Condition A20. The works comprised the raising of an area in the recently handed over land from CTP which required filling and concreting of the new surface to make additional car spaces. There were no observed environmental impacts from the works and environmental controls were in place.

#### **3.6.3 Audits**

An Independent Environmental Audit is planned for the Metro West project in August which will include ETP activities.

### **3.7 Looking Forward – Core Focus Areas**

In the next reporting period, the ER Team will be focused on:

- General monitoring of construction activities
- Noise associated with excavation of the Hunter Street shafts
- Potential for tracking of dirt at the Pyrmont East and Hunter Street sites
- Review of planned ancillary facilities at Pyrmont East
- Interactions of activities with neighbouring developments at Hunter Street



## **4 SYDNEY METRO RETAINED OBLIGATIONS AND OTHER ACTIVITY**

The Environmental Representatives for the Sydney Metro Retained Obligations and other Activities are:

- Swathi Gowda
- Jo Robertson

The Sydney Metro Retained Obligations and other Activities is being delivered by Sydney Metro with various sub-contractors delivering the works. These works do not require an EPL.

### **4.1 Key Construction Activities During the Period**

The ER is not aware of other Sydney Metro managed construction activities during the period.

### **4.2 Key Construction Activities Look Ahead**

The Phasing Report has been revised to update scope of Phase H to include Five Dock Overhead to Underground Relocation (Phase H2) and under review for ER endorsement. Phase H2 Five Dock investigative work (potholing) to inform design anticipated to commence mid-September (TBC).

### **4.3 ER Inspections**

No ER Inspections during the reporting period.

#### **4.3.1 Photos**

Not applicable as there were no inspections.

### **4.4 Endorsed Document/s**

Nil. Refer Section 4.2

### **4.5 Complaints**

No complaints have been reported to the ER during the reporting period.

### **4.6 Compliance**

#### **4.6.1 Incidents**

No incidents have been reported to the ER during the reporting period.

#### **4.6.2 Non-compliance**

No non compliances have been reported to the ER during the reporting period.

#### **4.6.3 Audits**

Independent Audit status for WTP, CTP and ETP are reported (where relevant) in other sections of this Monthly Report.



## **5 STATEMENT OF LIMITATIONS**

Healthy Buildings International (HBI) has prepared this report in accordance with the requirements of Condition A30(k) of the Sydney Metro West, Concept and Stage 1 SSI 10038 Approval (11 March 2021), and Condition A32(k) of the Sydney Metro West – The Bays to Sydney CBD SSI 19238057 Approval (24 August 2022).

The report is for the sole purposes of Department of Planning, Housing and Infrastructure (DPHI) and Sydney Metro. It has been prepared based on generally accepted practices and standards at the time it was prepared. No other warranty, expressed or implied, is made as to the professional advice included in this Report. This report did not assess any aspects relating to safety.

Where the Report indicates that information has been provided to HBI by third parties, HBI assumes no liability for any inaccuracies in or omissions to that information.

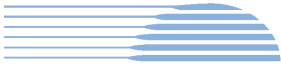
This Report was prepared based on the conditions encountered and information reviewed at this time. HBI disclaims responsibility for any changes that may have occurred after this time.

This Report should be read in full. No responsibility is accepted for use of any part of this report in any other context or for any other purpose or by third parties. This Report does not purport to give legal advice. Legal advice can only be given by qualified legal practitioners.

Except as required by law, no third party may use or rely on this Report unless otherwise agreed by HBI in writing. Except as specifically stated in this section, HBI does not authorise the use or findings of this Report by any third party.

To the extent permitted by law, HBI expressly disclaims and excludes liability for any loss, damage, cost or expenses suffered by any third party relating to or resulting from the use of, or reliance on, any information contained in this Report. HBI does not admit that any action, liability or claim may exist or be available to any third party.





HBI Healthy Buildings International Pty Ltd

## **6 APPENDIX A – ER DOCUMENT ENDORSEMENT RECORDS (ETP ONLY)**