

Mr [REDACTED]
Team Leader Compliance – Government Projects
Department of Planning, Housing and Infrastructure
Locked Bag 5022
PARRAMATTA NSW 2124

7 August 2025
Ref: 170108-ER_DPHI July 2025

Dear [REDACTED]

RE: Sydney Metro City and South West – ER Monthly Reports for July 2025

Healthy Buildings International (HBI) submits this report to the Secretary in accordance with:

- Condition A26 (j) of the Sydney Metro Sydenham to Bankstown Upgrade SSI_8256 Approval (12 December 2018) and associated modifications MOD1_Bankstown Station and Mod 2_Modification to A9, D3 and E53.

The attached summaries detail the key activities undertaken by Environmental Representatives for Sydney Metro – City and South West Sydenham to Bankstown for the month of **July 2025**.

It is noted that Sydney Metro - Sydenham to Bankstown - SSI 8256 MOD 2 - Modification to A9, D3 and E53 has been approved by Department of Planning, Housing and Infrastructure on 2 June 2025.

Yours sincerely

[REDACTED]
Environmental Representative

Cc: Sydney Metro: [REDACTED]
AA: Available on Sydney Metro Website
Contractors: Available to Contractors on Sydney Metro Website
DPHI Compliance: Portal
DPHI Post Approvals: Available on Sydney Metro Website

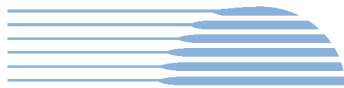


Table of Contents

1.	Sydenham to Bankstown – TSOM.....	3
2.	Southwest Metro Corridor Package 3 (SWM3) JHLOR	4
3.	Errant and Hostile Vehicle Mitigation Treatments (EHVMT)	8
4.	Sydney Metro Retained Obligations (SM).....	11
5.	Statement of Limitations	12



1. Sydenham to Bankstown – TSOM

Project Approval	Contract Package	EPL	Environmental Representative/s
SSI 8256 (S2B)	Train Service Operation and Maintenance (TSOM)	JHLOR EPL 21147 – MTR is working under JHLOR CEMP, and subplans SSI 8256 (reconfirmed with Sydney Metro 31 July 2025)	
Key Construction Activities During the Period			
<ul style="list-style-type: none"> ▪ Southwest corridor and stations <ul style="list-style-type: none"> • Installation of field devices • Cable hauling within the station platform buildings • Testing and commissioning of cabinets 			
Key Construction Activities Look Ahead			
<ul style="list-style-type: none"> ▪ Southwest corridor and stations Marrickville, Dulwich Hill, Hurlstone Park, Canterbury, Campsie, Belmore, Lakemba, Wiley Park, Punchbowl and Bankstown Stations: <ul style="list-style-type: none"> • Cable installation works to the station platform buildings • Cabinet installation • Cable installation works to field equipment devices • Installation of field equipment devices throughout the station and surrounding areas • Termination of cabling to field equipment • Testing and commissioning of cabinets and field equipment • Train testing activities 			
ER Inspections			
<ul style="list-style-type: none"> ▪ The works at station platform and Metro Service Buildings (MSBs) such as cable pulling were observed by the ER while inspecting SWM3 sites, no issues were raised. 			
Photos			
<ul style="list-style-type: none"> ▪ N/A 			
Endorsed Document/s			
<ul style="list-style-type: none"> ▪ Nil 			
Non-compliance/ Incidents or Repeat Complaints			
<p>Sydney Metro has been providing summaries of complaints to DPHI daily and a summary to the ER. Responses to each complaint have been noted in each complaint report, with follow up actions often defined in revised reports. Key or repeat items of note are discussed below for the respective projects.</p> <p>There were no incidents for TSOM reported to the ER under condition A36 of SSI 8256.</p> <p>No non-compliances were raised by the ER, Sydney Metro or reported to the ER during the reporting period</p> <p>Project related complaints:</p> <ul style="list-style-type: none"> ▪ Nil <p>Unrelated Project complaints:</p> <ul style="list-style-type: none"> ▪ Nil 			
Audits			
<ul style="list-style-type: none"> ▪ No audits 			
Looking Forward – Core Focus Areas			
<ul style="list-style-type: none"> ▪ Works at platforms within close proximity of heritage listed stations ▪ Testing and commissioning between Sydenham and Bankstown 			



2. [Southwest Metro Corridor Package 3 \(SWM3\) JHLOR](#)

Project Approval	Contract Package	EPL	Environmental Representative/s
SSI 8256 (S2B)	Southwest Metro Corridor Package 3 (SWM3) JHLOR	#21147	
Key Construction Activities - During the Period			
<ul style="list-style-type: none"> Project wide - Defect works related to overhead wiring are ongoing Belmore Triangle - Laydown area operations ongoing including material stockpiles and concrete and liquid waste management Canterbury Compound - Site offices and amenities in operation, fuel and gas storage; vegetation maintenance including weed removal North Terrace Compound, Bankstown: Site offices and amenities, fuel and gas storage Punchbowl Station - Platform works ongoing Campsie - Platform works ongoing Marrickville Station - Platform works ongoing Canterbury Station – Platform works ongoing Belmore Station – Platform works ongoing Wiley Park - Ongoing updates to the Tree Report. Platform works ongoing Bankstown Station - Block work, brick work, roofing installation ongoing on Sydney Metro side building Ongoing tree impact assessment, pruning, removal and ecologist supervision. Some sections adjacent to Threatened Ecological Communities (TECs) and threatened species, e.g. Breust Street ramp (Punchbowl), Urunga Parade (Punchbowl), South Terrace (Bankstown) Vegetation management within the rail corridor Ongoing operation of site office caravans at selected Metro Services Buildings (MSBs) Stockpile management including waste classification, waste tracking, load-in / load-out, management of site accesses and truck routes <p>Planning for WE05 02/08/2025 & 03/8/2025 Possession - Sunday Day OOHW. Weekend activities included:</p> <ul style="list-style-type: none"> Rail to earth testing through corridor Various Stations - asphaltting works Various Stations - mixed work and defects Corridor Intrusion Detection System and Object Detection System (CIDS and ODS package) vegetation pruning & clearing General vegetation maintenance - corridor wide Galvanised Steel Troughing rectification Testing & energization Redundant asset removal - buildings Inspection works on track drainage system using Closed Circuit Television (CCTV) cameras Track works - ballast and sleeper replacement Overhead Wiring maintenance 			
Key Construction Activities Look Ahead			
<ul style="list-style-type: none"> Survey and defect inspections at all stations Vegetation removal related to CIDS and ODS package Testing and commissioning between Sydenham and Bankstown Platform works at all stations 			
ER Inspections			
Two ER inspections were conducted in the reporting period on 8 July and 29 July 2025. Minor issues related to storage of dangerous goods and chemicals were raised during inspections and promptly addressed by the contractor.			

Photos



Figure 1 – Marrickville Station – Lead removal in progress inside the station buildings. Lead removal related air quality sampling was being undertaken at the time of inspection.



Figure 2 – Marrickville Station – Minor Ancillary Facility in operation, JHLOR undertook cleaning of the area post-inspection.



Figure 3 – Marrickville Station – Cable installation activities underway.



Figure 4 – Marrickville Station – Electrical activities associated with platform screen doors and mechanical gap fillers underway.



Figure 5 – Marrickville Station – Fire hose trenching works underway on platform 2.



Figure 6 – Lakemba Station – Lakemba Station - Landscaping and form, reo, pour activities ongoing.



Figure 7 – Canterbury Station – Upcoming landscaping works on the platform side embankment.

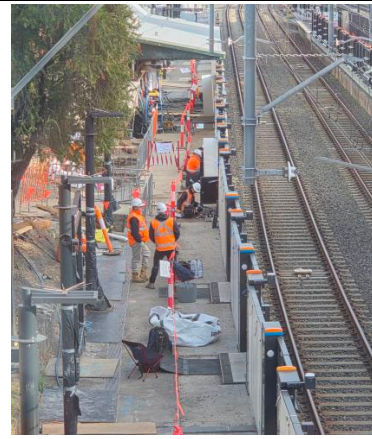


Figure 8 – Canterbury Station – Platform Screen Door works ongoing.



Figure 9 – Canterbury Station – Asphalt removal works underway.



Figure 10 – Bankstown Station - Bankstown Station - Station Works underway including mechanical, electrical and plumbing works, storm water pipes works.

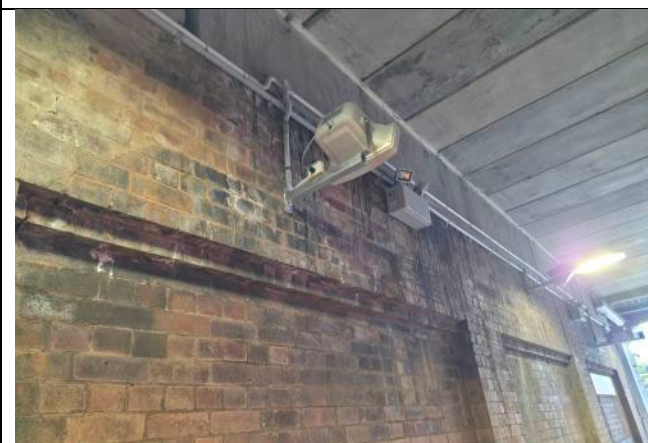
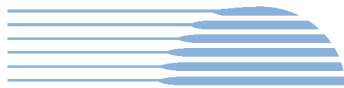


Figure 11 – Bankstown Station –All actions related to the previous heritage related NCR have now been addressed by the contractor in relation to this NCR.



Figure 12 – Bankstown Station – Bankstown Station - Sydney Trains 63 days shutdown works complete. Sydney Trains operations recommenced. JHLOR in the process of demobilising Depot Place laydown area.



Endorsed Document/s
<ul style="list-style-type: none">▪ Nil
Non-compliance/ Incidents or Repeat Complaints
Summaries of CSW complaints are now received on a weekly basis. Complaints are discussed where relevant for each package below.
There was one non-compliance reported to the ER during the period. No NCRs were raised by the ER or Sydney Metro. <ul style="list-style-type: none">▪ 24/07/2025 – NCR – REMM NAH1 to 3 and 4 – Administrative NCR in relation to heritage items at Bankstown Station
There were no incidents reported to the ER under Condition A36 of SSI 8256.
During the period, no Class 3 environmental incident was reported to the ER. No other Class 3 environmental incidents were reported:
The ER is aware of the following complaints received in July 2025 related to the SWM3 works. The number of complaints increased in this reporting period compared to the previous month due to main works being conducted at station platforms:
<ul style="list-style-type: none">▪ One unrelated noise complaint at Dulwich Hill▪ Three complaints related to visual amenity at Hurlstone Park Station▪ One complaint related to air quality at Marrickville Station
Audits
Nil
Summary of Environmental Performance
Environmental risks are consistent with out of hours works during possessions and maintaining compliance with the Tree Report during the security fence installation. Actions raised during ER inspections are closed out within the agreed timeframe with useful supporting documentary evidence provided.
Looking Forward – Core Focus Areas
<ul style="list-style-type: none">▪ Management of ERSED controls generally▪ Management of noise during out-of-hours work during possessions▪ Management of tree impacts, Plant Community Types (PCTs) and Threatened Environmental Communities (TECs) during construction of security fencing along the alignment, and maintenance of the buffer zone.



3. [Errant and Hostile Vehicle Mitigation Treatments \(EHVMT\)](#)

Project Approval	Contract Package	EPL	Environmental Representative/s
SSI 8256 (S2B)	Errant and Hostile Vehicle Mitigation Treatments (EHVMT) Martinus Rail	No EPL	
Key Construction Activities - During the Period			
<p>Construction Activities:</p> <p>General: Minor Ancillary Facilities operating at Belmore, and North Terrace/Stacey Street, Bankstown.</p> <ul style="list-style-type: none"> • Livingstone Road – FRP works continuing • Wardell Road – Finishing works • Duntroon Street – Finishing works • Melford Street – Finishing works • Canterbury Road – Utility relocation works complete, piling works commenced on westbound lane • Loch Street – Footpath and barrier works continuing. Asphalt works to be completed • Burwood Road – Finishing works • Moreton Street – Remaining concrete barrier works ongoing. • Haldon Street – Piling works commenced on City side • King Georges Road – Concrete barrier and footpath works continuing. • Punchbowl Road – Finishing works continuing • Stacey Street – Footpath and concrete barrier works (northbound) are continuing, with TMP implementation commenced on southbound set up. Bridge strengthening works have commenced on the undersides of both sides of the bridge. Hydro demolition has been completed; concrete barrier pours to commence on Southbound Lane. <p>Completed sites:</p> <p>Overbridge sites:</p> <ul style="list-style-type: none"> • Illawarra Road • Garnett Street • Albermarle Street <p>Non-bridge sites:</p> <ul style="list-style-type: none"> • Wattle Street/North Terrace – steel rail guard • Bruest Place/Kelly Street Punchbowl – concrete barrier installation completed. • Peel St • Railway Pde • Dennis St • Railway Pde • Kier Avenue/Hurlstone Park – steel rail guard installation completed. • Dudley Street – ecologist tech memo prepared to demonstrate nil impact to Plant Community Types. 			
Key Construction Activities Look Ahead			
<ul style="list-style-type: none"> ▪ Punchbowl Road, Punchbowl – Finishing works ▪ Melford St, Hurlstone Park – Finishing works ▪ King Georges Road, Wiley Park – Intersection works ▪ Burwood Road, Belmore – Finishing works ▪ Albermarle St, Dulwich Hill – Sydney Trains HV feeder 761 removal, delivery and installation of the off-structure beam, demolition of existing balustrade fence, installation of screens ▪ Duntroon St, Hurlstone Park – Barrier works and finishing of off-structure beams using crane ▪ Livingstone Road, Marrickville – Remediation works, barrier works 			

- Canterbury Road, Canterbury – Overbridge remedial works, service searching and modification of northeast hoarding
- Loch St, Campsie – Finishing works
- Haldon St, Lakemba – Piling works on the north and south side of the rail corridor

ER Inspections

- ER inspections are undertaken based on scope/risk levels of the activities. One ER inspection was undertaken in the reporting period on 21/07/2025 with the key focus on erosion and sediment controls and tree protection zones management. One new issue was raised regarding appropriate labelling of chemical and water containers which was promptly addressed by the contractor.

Photos



Figure 1 – Stacey St, Bankstown – Bridge modification works in planning.



Figure 2 – Stacey St, Bankstown – Panel removal from Stacey St Overbridge ongoing.



Figure 3 – Stacey St – Stage 2 – Hydro demolition of existing footpath and kerb complete, Footpath works including form, reo and pour (FRP) ongoing.



Figure 4 – Loch St, Campsie – Footpath and barrier works complete, fencing works underway.



Figure 5 – Loch St, Campsie – Fencing installation works ongoing.



Figure 6 – Haldon St, Lakemba – Piling works ongoing.

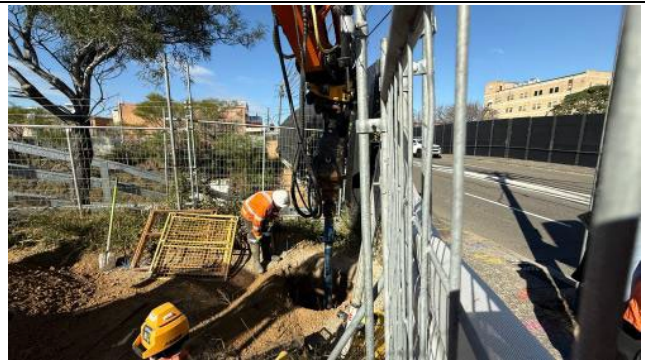
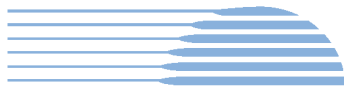


Figure 7 – Haldon St, Lakemba – Piling works ongoing.

Endorsed Document/s
<ul style="list-style-type: none"> OOHW#19 – Rev B – 11/07/2025 OOHW#20 – Rev B – 28/07/2025
Non-compliance/ Incidents or Repeat Complaints
<p>Since commencement of City metro services passenger operations on Monday 19 August 2024, Sydney Metro is now providing summaries of CSW complaints on a weekly basis (was provided daily until 16 August 2024) to DPHI and ERs covering complaints related to remaining construction works.</p> <p>There were no non-compliances raised by the ER or reported to the ER during the reporting period.</p> <p>There were no incidents reported to the ER under Condition A36 of SSI 8256.</p> <p>There were no Class 3 environmental incidents reported to the ER during the reporting period.</p> <p>ER is aware of the following complaints received during the reporting period. The number of noise related complaints decreased considerably in this reporting period due to less works being undertaken outside standard construction hours than the previous period:</p> <ul style="list-style-type: none"> Five complaints related to OOHW noise and vibration, respite and alternative accommodation One complaint related to traffic, transport and parking
Audits
No ER involvement in audit activity including Independent Environmental Audits.
Looking Forward – Core Focus Areas
<ul style="list-style-type: none"> Management of erosion and sediment controls generally Management of noise and dust during out-of-hours works Management and protection of retained heritage items Management of TECs



4. [Sydney Metro Retained Obligations \(SM\)](#)

Project Approval	Contract Package	EPL	Environmental Representative/s
SSI 8256 (S2B)	Sydney Metro Retained Obligations (SM)	Not applicable	
Key Construction and other Activities			
SM	<ul style="list-style-type: none">Working with MTR for various dynamic testing related activities for SouthwestWorking with RMA for Chatswood Driveway and Shared Path Works		
ER Inspections			
	<ul style="list-style-type: none">Nil		
Endorsed Document/s			
ER	<ul style="list-style-type: none">Minor Works Approval #4 – RMA – Chatswood Driveway Works – Rev 3 – 30/07/2025Minor Works Approval #3 – RMA – Chatswood Shared Path Works – Rev 5 – 31/07/2025		
Non-compliance/ Incidents or Repeat Complaints			
<p>Since commencement of FPS, Sydney Metro now provides summaries of CSW complaints on a weekly basis to DPHI and ERs covering complaints related to remaining construction works. Key or repeat items of note are discussed below for the respective projects, where applicable or under respective CSW packages.</p> <p>No incidents were reported to the ER during the reporting period.</p> <p>No non-compliances were reported to the ER during the reporting period:</p>			
Audits			
SM	Nil		
Looking Forward – Core Focus Areas			
SM	Collaborating with MTR and MTS to ensure the required documents are ready or the First Passenger Service.		

5. Statement of Limitations

Healthy Buildings International (HBI) has prepared this report in accordance with the requirements of Condition A24(l) of the Sydney Metro Condition A26(j) of the Sydney Metro Conditions of Approval (CSSI 17_8256). The report is for the sole purposes of Department of Planning, Housing and Infrastructure (DPHI) and Sydney Metro. It has been prepared based on generally accepted practices and standards at the time it was prepared. No other warranty, expressed or implied, is made as to the professional advice included in this Report. This report did not assess any aspects relating to safety.

Where the Report indicates that information has been provided to HBI by third parties, HBI assumes no liability for any inaccuracies in or omissions to that information.

This Report was prepared based on the conditions encountered and information reviewed for the period of reporting. HBI disclaims responsibility for any changes that may have occurred after this time.

This Report should be read in full. No responsibility is accepted for use of any part of this report in any other context or for any other purpose or by third parties. This Report does not purport to give legal advice. Legal advice can only be given by qualified legal practitioners.

Except as required by law, no third party may use or rely on this Report unless otherwise agreed by HBI in writing. Except as specifically stated in this section, HBI does not authorise the use or findings of this Report by any third party.

To the extent permitted by law, HBI expressly disclaims and excludes liability for any loss, damage, cost or expenses suffered by any third party relating to or resulting from the use of, or reliance on, any information contained in this Report. HBI does not admit that any action, liability, or claim may exist or be available to any third party.