

Mr Rob Sherry
Team Leader Compliance – Government Projects
Department of Planning, Housing and Infrastructure
Locked Bag 5022
PARRAMATTA NSW 2124

6 June 2025
Ref:201208-ER_DPHI-May 2025

Dear Rob

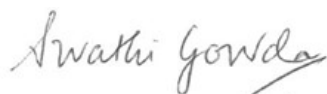
RE: Sydney Metro - Sydney Metro West SSI - ER Monthly Report for May 2025

Healthy Buildings International (HBI) submits this report to the Secretary in accordance with:

- Condition A30 (k) of the Sydney Metro West, Concept and Stage 1 SSI 10038 Approval (11 March 2021), and associated modifications (MOD 1 - 28 July 2021, MOD 2 - 3 June 2022, MOD3 – 4 July 2022, MOD 4 - 23 December 2022, MOD 5 – 20 September 2023 and MOD 6 – 6 November 2024); and
- Condition A32(k) of the Sydney Metro West – The Bays to Sydney CBD SSI 19238057 Approval (24 August 2022) and associated modifications (MOD 1 – April 2023, MOD 2 – October 2023, and MOD 3 – November 2024)

The attached summary details the key activities undertaken by Environmental Representatives for Sydney Metro – Sydney Metro West for the month of May 2025.

Yours sincerely



Swathi Gowda
Environmental Representative

Cc:

DPHI: Major Projects Portal

Sydney Metro: John Ieroklis, Maria Doumit, Andrew Hendy, Cath Snelgrove, Ari Stypel, Ryan Butler, Sarah Kemp, Syed Shah, Valerie Lebon, Sarah Lepre

Contractors: Jared Lipton (AFJV), Steph Mifsud (GLC), Sally Reynolds (JCG)

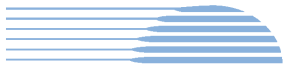


Table of Contents

1	Phase B - Central Tunnelling Package	4
1.1	Key Construction Activities During the Period	4
1.2	Key Construction Activities Look Ahead	5
1.3	ER Inspections	5
1.3.1	Photos	6
1.4	Endorsed Documents	7
1.5	Complaints	7
1.6	Compliance	7
1.6.1	Incidents	7
1.6.2	Non-compliance and Potential Non Compliance	7
1.6.3	Audits	7
1.7	Looking Forward – Core Focus Areas	7
2	Phase F – Western Tunnelling Package	8
2.1	Key Construction Activities During the Period	8
2.2	Construction Activities Look Ahead	9
2.3	ER Inspections	9
2.3.1	Photos	10
2.4	Endorsed Documents	12
2.5	Complaints	12
2.6	Compliance	12
2.6.1	Incidents	12
2.6.2	Non-compliance	13
2.6.3	Audits	13
2.7	Looking Forward – Core Focus Area	13
3	Phase G – Eastern Tunnel Package	14
3.1	Key Construction Related Activities During the Period	14
3.2	Key Construction Activities Look Ahead	15
3.3	ER Inspections	15
3.3.1	Photos	15
3.4	Endorsed document/s	17
3.5	Complaints	17
3.6	Compliance	17
3.6.1	Incidents	17
3.6.2	Non-compliance	17
3.6.3	Audits	18



3.7	Looking Forward – Core Focus Areas	18
4	Sydney Metro Retained Obligations and Other Activity	19
4.1	Key Construction Activities During the Period	19
4.2	Key Construction Activities Look Ahead	19
4.3	ER Inspections	19
4.3.1	Photos	19
4.4	Endorsed Document/s	19
4.5	Complaints	19
4.6	Compliance	19
4.6.1	Incidents	19
4.6.2	Non-compliance	19
4.6.3	Audits	19
5	Statement of Limitations	20
6	Appendix A – ER Document Endorsement Records (ETP only)	21



1 PHASE B - CENTRAL TUNNELLING PACKAGE

The Environmental Representatives for Phase B of Sydney Metro West are:

- Michael Woolley
- Maulik Bapodara
- Swathi Gowda
- Jo Robertson

Phase B – Central Tunnelling Package (CTP) is being delivered by Acciona Ferrovia Joint Venture (AFJV). Phase B of Sydney Metro West has been further broken into:

- Phase B1: Civil works
- Phase B2: Tunnelling works

The AFJV hold EPL 21610 for this Phase of works. Activities defined as Phase B2-Tunneling Works in the Staging Report for Metro West commenced during the November 2022 reporting period at Burwood North. During the reporting period Substantial Construction was achieved under the CTP contract for the remaining sites, with rectification works ongoing at some sites.

1.1 Key Construction Activities During the Period

The Bays

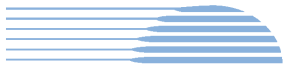
- Some defects work and works related to the sewer ongoing after handover. Operation of the water treatment plant and management/maintenance of areas handed over. Former spoil shed area handed over to the ETP Contractors.

Five Dock

- West Shaft: Use of a crane on the surface for deliveries to the shaft and surface. Demobilisation of site sheds. Minor concrete works and other works to prepare for handover of the site which occurred during the reporting period. Ongoing works in the base of the shaft and cavern. Ongoing demobilisation activities.
- East Shaft: Completion of the removal of the acoustic shed and demobilisation from site. Handover of the site occurred during the reporting period. Ongoing works in the base of the shaft and cavern. Ongoing demobilisation activities.
- Completion of the installation of hoarding around the site.
- Ongoing use of a house on Waterview Street adjacent the eastern shaft for project offices. New driveway constructed for the house.
- Removal of water filled barriers from along Waterview Street and parts of Second Avenue. Repair of footpaths and road pavement in these areas.
- Water directed to the Bays water treatment plant for treatment.

Burwood North

- Ongoing remedial works in the nozzles and headwalls in the eastern end of the station box. Deliveries and unloading of items to the surface.
- Operation of the water treatment plant if required, with discharge direct to stormwater when operating.
- South Shaft: Use of site sheds for personnel.

**North Strathfield**

- Very limited works at the site which was locked up and no personnel on site permanently.
- Pumping of water from the station box to Burwood North or the Bays for treatment and discharge.

Sydney Olympic Park

- Use of a workshop and laydown of materials at the surface for tunnellers who are still using the site to conduct rectification works in the tunnel.
- Tunnelling personnel using offices, workshop and laydown.
- Project Office being used by AFJV and Sydney Metro personnel.

AFJV continue to manage all sites (except much of the Bays which has been handed over to ETP Contractors).

1.2 Key Construction Activities Look Ahead

- Ongoing activities as described above
- Defect works ongoing across most sites.
- Ongoing remedial works at BN and SOP in the nozzles.
- Ongoing operation of the water treatment plants at BN (if required) and the Bays.
- Ongoing management/caretaking of sites where works are complete.

1.3 ER Inspections

There were five ER inspections conducted during the reporting period on Thursday of each week in May. Most sites were inspected on a fortnightly basis. North Strathfield was not inspected, other than from outside the site. The following actions were raised during the inspections:

- AFJV to maintain sediment controls at the low point of the Eastern Shaft site at Five Dock and desilt the area upgradient of the drain.
- AFJV to implement adequate controls for concrete washout work and install adequate ERSED controls at the pit near the truck turntable.

AFJV have been responsive in addressing actions raised during ER Inspections.



1.3.1 Photos



Figure 1.1 Water Treatment Plant (The Bays).



Figure 1.2 Discharge from the water treatment plant (The Bays).



Figure 1.3. Removal of blinding concrete in the eastern shaft (Five Dock).



Figure 1.4 Hoarding installed around the east site. Reinstatement of footpaths (Five Dock).



Figure 1.5 Remedial works ongoing in the nozzles (Burwood North).



Figure 1.6 Laydown at the surface (Burwood North).



Figure 1.7 Laydown and workshop (SOP).



Figure 1.8 Remedial works in the nozzles (SOP).

1.4 Endorsed Documents

No documents were required to be signed, approved or endorsed during the reporting period.

1.5 Complaints

Based on the monthly Sydney Metro Complaint Register issued for May 2025, there were 3 complaints reported for the month with one of the complaints determined by the project to be not related to the Sydney Metro works.

One complaint related to noise during standard hours from the eastern shaft site. The other related to scheduling of building condition surveys. The reduced number of complaints on the project correlates to the reduced works being conducted at the sites.

1.6 Compliance

1.6.1 Incidents

No Incidents as defined in the Infrastructure Approval were reported by AFJV during the reporting period.

1.6.2 Non-compliance and Potential Non Compliance

AFJV reported one Non-Compliance report (NCR) during the reporting period regarding the submission of the CTP Bi-Annual Construction Monitoring Report 6 (July – December 24) to the Water Group and NRAR being over the 40-day period specified in the Groundwater Management Plan.

1.6.3 Audits

An Independent Environmental Audit (IEA) was conducted during February 2025. The final IEA Report was issued to the ER during the reporting period.

1.7 Looking Forward – Core Focus Areas

- Management of sites where works are completed.



2 PHASE F – WESTERN TUNNELLING PACKAGE

The Environmental Representatives for Phase F of Sydney Metro West are:

- Swathi Gowda
- George Kollias
- Michael Woolley
- Maulik Bapodara
- Jo Robertson

Phase F – Western Tunnelling Package (WTP) is being delivered by Gamuda Australia Laing O’Rourke Consortium (GLC).

GLC are constructing this Phase of Sydney metro West under EPL 21676.

2.1 Key Construction Activities During the Period

During the reporting period, the following activities were being undertaken at the Sydney Olympic Park (SOP), Westmead, Parramatta and the Clyde stabling and maintenance facility which includes the Rosehill, Clyde Dive and Clyde MSF construction sites:

SOP

- Nil (handed over on 15 April 2025)

Westmead

- Arch and wall cages installation within crossover cavern
- Arch pour within crossover cavern
- Station cavern lining works
- Station box - Zone 5 and Zone 6 excavation
- Spoil loadout (now completed)
- Station cavern formwork assembly and steel fixing ongoing

Parramatta

- Eastern Station Box: TBM arrival preparatory works ongoing
- Western Station Box:
 - D-Wall rectification works
 - Box excavation
- Central Station Box: Strut and waler installation and box excavation
- Archaeology:
 - Zone 8b – Archaeological investigation and clearance work completed
- WTP is operating and discharging as necessary
- Other works:
 - Staged removal of container wall - installation of steel structure
 - Substation commissioning works

**Rosehill**

- TBM1 and TBM 2 - on route towards Parramatta
- Cross passage excavation (XP79 commenced and XP82 nearing completion)
- Water Treatment Plant operation including off-site discharge ongoing
- No spoil going off-site currently

Clyde Dive

- Electric Tower Crane operational
- Caverns ongoing
- FRP for offices above dive structure ongoing
- HV Protection slab planks installed, capping beam and backfill
- Utilities protection slab works commenced
- Acoustic Shed – removal of internals commenced

Clyde MSF

- Dewatering activities
- Stormwater installation across site
- Close out of defects across Unwin St and Fleet St
- Bio Basin construction completed
- Duck Creek Water Conveyance Structure finishing works
- Bulk earth works and fill across MSF (East and West) ongoing
- Flood Relief Culvert planks installed and capping pours underway
- Hot spot removal and excavation for future flood relief basin ongoing
- Final retaining wall works including security fence installation ongoing
- Preparation for landscaping works

2.2 Construction Activities Look Ahead

The key construction activities planned are similar to those listed in Section 3.1, with the addition of the following:

- Various OOHW (conducted under EPL)
- Clyde Dive - Preparation works for boundary retaining wall and security fence installation
- Clyde Dive - Preparation works for tower crane removal

2.3 ER Inspections

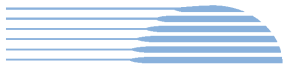
Currently, the sites are divided into two groups and visited typically fortnightly for ER inspections. The two groups are:

- Parramatta, Westmead and SOP
- Clyde Dive, Clyde MSF and Rosehill

Four ER inspections were conducted during the reporting period (07/05/2025, 14/05/2025, 21/05/2025 and 28/05/2025); with opportunities for improvement (OFIs) identified and the following actions (summarised) raised during the month:

Clyde Dive

- Clyde Dive: Maintenance action raised to address sediment build-up adjacent to grated strip drain.



Clyde MSF

- Clyde MSF: Action raised for unbunded fuel containers to be stored with secondary containment.

Parramatta, Westmead and Rosehill

- Nil

2.3.1 Photos



Figure 2.1- Parramatta Site: Dust suppression measures in place for box excavation.



Figure 2.2- Parramatta Site: Staged container wall removal and install of steel structure.

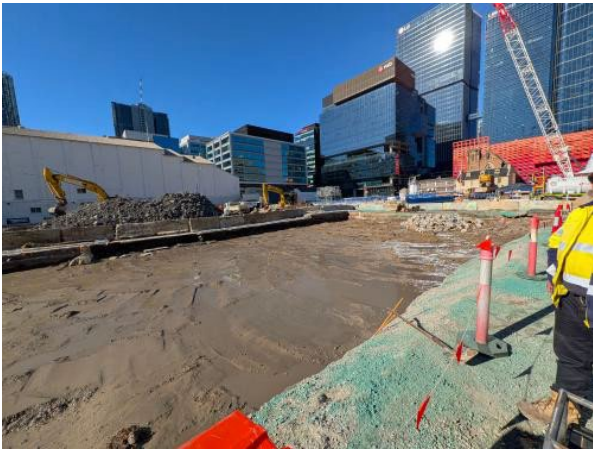


Figure 2.3 – Parramatta Site: Archaeological investigation and clearance works completed in Zone 8b.



Figure 2.4 – Parramatta Site: Spoil load-out.



Figure 2.5 – Westmead Site: Sprinklers operational along site internal haul road.



Figure 2.6 – Westmead Site: Site egress maintained satisfactorily, with street sweeper in attendance.



Figure 2.7 – Rosehill Site: Site egress maintained satisfactorily.



Figure 2.8 –Rosehill Site: Spoil management within shed.



Figure 2.9 – Clyde MSF Site: BioBasin construction works completed.



Figure 2.10 – Wentworth St, Clyde: Footpath/kerb works underway outside Area 5.



Figure 2.11 – Clyde MSF Site: Stormwater drainage works underway.



Figure 2.12 – Clyde Dive Site: HV protection slab - FRP works ongoing.

2.4 Endorsed Documents

The following documents were approved or endorsed by the ER during the reporting period:

- Air Quality Management Plan (Rev I)
- Groundwater Management Plan (Rev F)
- Waste Management Plan (Rev G)
- Heritage Management Plan (Rev K)

2.5 Complaints

Based on the Sydney Metro Complaint Register for May 2025, there were four complaints reported during the month, compared to six complaints in April 2025. Of the complaints reported during May 2025, one complaint was recorded as not related to SM activities, with remaining complaints summarised below:

Clyde

- Complaint about night works at Clyde Site (Noise – OOHV)

Westmead

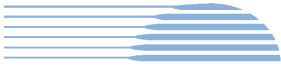
- Complaint regarding daily survey prism monitoring of the property (Property – Access)
- Complaint regarding use of street sweeper on Hawkesbury Road during the rain (Traffic, Transport & Parking)

2.6 Compliance

2.6.1 Incidents

No incidents considered to represent Incidents as defined under the Project Approval were reported to or observed by the ER during the reporting period.

Class 3 incidents related to spills reported under GLC/SM reporting system during the reporting period.



2.6.2 Non-compliance

One non-compliance report provided to the ER during the reporting period. Non-compliance recorded against MCoA D86 - Westmead non-spoil truck using a local road not approved in the HVLR.

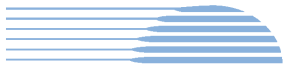
2.6.3 Audits

Nil. Recent Independent Audit Report (and Proponent's response) submitted to DPHI on 8 May 2025.

2.7 Looking Forward – Core Focus Area

The core focus areas for upcoming works are:

- Clyde Dive - Removal of acoustic shed, adjoining slabs and haul road
- Clyde Dive - Permanent boundary fence works (ATC boundary) including tree removal, retaining wall, drainage construction and security fence installation
- Clyde Dive - Protection Slab Works (near ATC Stables) over the 1500 Sydney Water Main
- Utility works along local roads in the vicinity of Clyde MSF to relocate High Voltage and Low Voltage (HV/LV) route.



3 PHASE G – EASTERN TUNNEL PACKAGE

The Sydney Metro West Eastern Tunnel Package is Stage 2 of the Sydney Metro West CSSI and is described as major civil construction works between The Bays and Sydney CBD, including station excavation at Pyrmont and Hunter Street and tunnel excavation between the Bays and Hunter Street. Stage 2 (SSI 19238057) was approved on the 24 August 2022.

The Environmental Representatives for the Sydney Metro West Eastern Tunnel Package are:

- Michael Woolley
- Maulik Bapodara
- Swathi Gowda
- Jo Robertson

The Eastern Tunnelling Package (ETP) is being delivered by John Holland CPB Ghella Joint Venture (JCG) with the contract being awarded in November 2022. Sydney Metro notified DPHI that the date of commencement of construction was 17 March 2023. JCG have received Environmental Protection Licence (EPL 21784) for the project.

3.1 Key Construction Related Activities During the Period

Works conducted during the reporting period included:

Hunter Street East:

- Removal of the structural elements of the acoustic shed as well as much of the contents of the shed.
- Ongoing concrete deliveries and FRP activities for pours in the caverns.
- Construction of ground support. Use of air ventilation systems and other tunnelling support activities.
- Use of the steel deck with access driveways to O'Connell Street and Hunter Street.
- Ongoing excavation and wall support under the Hunter Street footpath.
- Completion and commencement of use of the crib sheds and offices over Richard Johnson Square.
- Removal of former offices and crib rooms from site during weekends.
- Dismantling of some of the water treatment plant as part of its move to a new location.

Hunter Street West:

- Commencement of king piling works for the steel deck after leveling of the site.
- Use of the temporary site access driveway adjacent Skinners Hotel.
- Completion of the capping beam along the Hunter Street and George Street sides of the site.
- Works to remove a wooden lintel in the wall of the Skinner's Hotel and provide replacement support.
- Management of water in rainy conditions.
- Ongoing deliveries and pedestrian management along Hunter Street after its closure outside the site.
- Noted that the Milligan's development commenced on the site adjacent Hunter Street West with set up works for demolition observed. The initial stage of the project is the demolition of multi-storey office buildings.

Pyrmont East:

- Completion of the excavation of nozzles in the eastern end of the shaft with a Road Header which then moved to the west shaft. Ongoing excavation of the shaft by rock hammers.
- Ongoing excavation of the station and cross over caverns with road headers.
- Spoil load out by kibble and gantry crane in the permanent shaft and from the tunnelling activities in the temporary shaft within the acoustic shed.
- Ongoing use of the tunnel ventilation system including scrubber units.
- Use of site amenities/sheds on the steel deck to the east of the acoustic shed and use of one lane on Union Street for storage of containers and a sub-station.
- Ongoing treatment of water generated from tunnelling activities and groundwater. Discharge of treated water to stormwater system.

Pymont West:

- Ongoing excavation of the shaft walls and wall support using rock hammers.
- Commencement of excavation of an adit using the Road Header from the Pymont East. A scrubber unit and brattice was set up to treat dust from the operation.
- Ongoing use of the kibble for loading out spoil onto trucks. Trucks exiting to Pymont Street.
- Drainage of water to the tunnelling operations.

The Bays:

- Temporary cessation of TBM tunnelling until Pymont cavern excavation is ready for TBM arrival. Ongoing excavation of cross passages.
- Water treatment and discharge using the construction water treatment plant.
- Maintenance of the slurry treatment plant; spoil shed and related equipment while the TBM is not tunnelling.
- Concreting works for the invert of tunnels.
- Receipt and storage of spoil from Hunter Street and Pymont sites and load out spoil.
- General support activities such as in the workshops, segment delivery and storage and use of site offices.
- Use of the truck marshalling area by trucks waiting to load up and/or attend other project sites.

3.2 Key Construction Activities Look Ahead

The following works are planned to occur in the following reporting period:

- Ongoing activities as described above.
- Ongoing excavation of the cavern (24/7) and permanent shafts at the Pymont sites. Load out of spoil.
- King pile construction at Hunter Street west.
- Ongoing removal of items from the former shed at Hunter Street East.
- Ongoing excavation of cross passages in the tunnel from the Bays.

3.3 ER Inspections

Four ER inspections were conducted during the reporting period on each Tuesday in May. The inspection conducted on 27 May was completed with the AA and DPHI personnel during the night period. The following actions were raised during the inspections:

- JCG to replace the sediment bag at the drain on Hunter Street outside the Hunter Street west site.
- JCG to investigate the EWP's movement alarm at Hunter West and rectify.

There was an ongoing focus on tracking of dirt at all sites in the wet weather.

JCG were responsive to ER feedback during inspections and for the close out of actions raised.

3.3.1 Photos

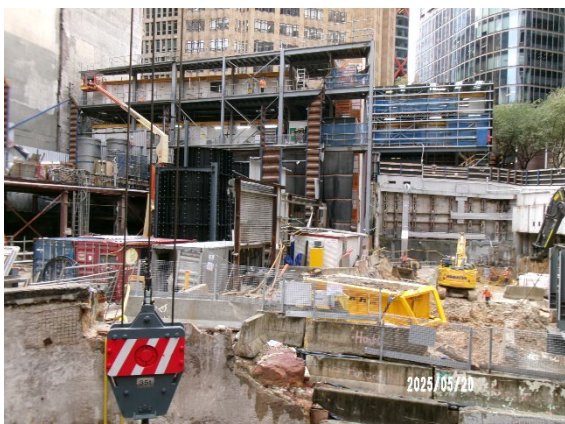


Figure 3.1 Hunter Street East: Acoustic Shed removed.

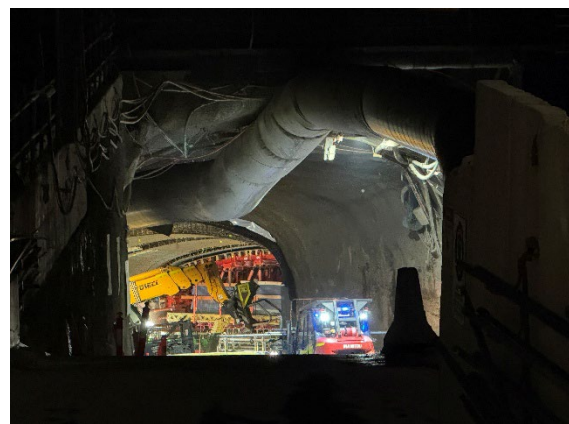


Figure 3.2 Hunter Street East: Ventilation in adit to Martin Place.



Figure 3.3 Hunter St West: Works on the south wall of Skinner's Hotel.

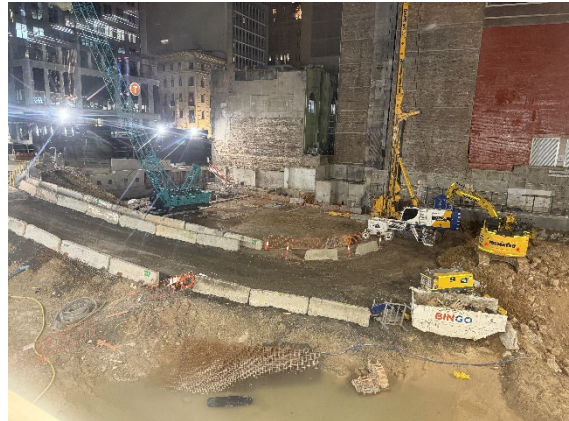


Figure 3.4 Hunter Street West: Commencement of piling for the king piles required for the steel deck.



Figure 3.5 Pyrmont East: Nozzle excavation by road header completed with ongoing excavation by rock hammer.



Figure 3.6 Pyrmont East: Kibble loading of trucks.



Figure 3.7 Pyrmont West: Preparation to excavate an adit with the road header.



Figure 3.8 Pyrmont West: Road Header located in adit to cavern.



Figure 3.9 The Bays: Spoil management in the spoil shed.



Figure 3.10 The Bays: Surface areas.

3.4 Endorsed document/s

The following documents were signed, approved or endorsed during the reporting period.

- Ancillary Facility Application The Bays CTP Areas
- Construction Environmental Management Plan (CEMP Rev 7).

The CEMP (Rev 7) was updated as part of an Annual Review as well as including the new Ancillary Facility at the Bays. The Ancillary Facility comprised car parking; truck marshalling and laydown in areas used by CTP contractors for construction purposes. In accordance with CoA A32(d)iii the written statements endorsing documents identified in A14, A21, C1, C5 and C14 are provided in Appendix A (if relevant).

3.5 Complaints

The monthly Sydney Metro complaint register for May 2025 indicated 8 complaints were reported to the Project that related to ETP activities, and one determined to not be related to Sydney Metro activities. This compares to 15 complaints received in April 2025.

Four complaints related to Pyrmont sites including for property damage (2), one for traffic management set up; and one related to the property acquisition process. Three complaints related to the Hunter Street sites of which all related to noise during standard hours. Two complaints related to cross passage works in the tunnel under Pyrmont conducted out of hours. One complaint related to TBM mainline tunnelling works covering aspects of noise and vibration (standard and out of hours); and property damage.

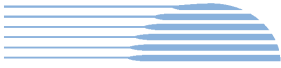
3.6 Compliance

3.6.1 Incidents

No incidents considered to represent an Incident as defined under the Project Approval were reported to the ER during the reporting period.

3.6.2 Non-compliance

The following Non-Compliance reports (NCRs) were provided to the ER during the reporting period:



- JCG have a system to manage heavy vehicles on the Project, however the system failed to ensure spoil haulage vehicles adhered to the nominated haulage routes identified in the CTMPs on some occasions during the audit period which is a requirement of Condition D77.
- The D37 Outcomes of Community Consultation Report – October to December 2024 (Q4) was not provided to the ER and AA prior to OOHW commencing.

3.6.3 Audits

The final report for the Independent Environmental Audit that was commenced in February 2025 was issued during the reporting period.

3.7 Looking Forward – Core Focus Areas

In the next reporting period, the ER Team will be focused on:

- General monitoring of construction activities
- Noise associated with excavation of the Pyrmont West and Hunter Street shafts; OOHs tunnelling at Pyrmont; and OOHs spoil haulage and deliveries at Pyrmont East
- Potential for tracking of dirt at the Pyrmont East and Hunter Street sites
- Review of planned ancillary facilities at Pyrmont East
- Interactions of activities with neighbouring developments at Hunter Street



4 SYDNEY METRO RETAINED OBLIGATIONS AND OTHER ACTIVITY

The Environmental Representatives for the Sydney Metro Retained Obligations and other Activities are:

- Swathi Gowda
- Jo Robertson

The Sydney Metro Retained Obligations and other Activities is being delivered by Sydney Metro with various sub-contractors delivering the works. These works do not require an EPL.

4.1 Key Construction Activities During the Period

The ER is not aware of other Sydney Metro managed construction activities during the period.

4.2 Key Construction Activities Look Ahead

As per the endorsed Phasing Report, there is an additional short-term phase of work proposed at North Strathfield (utilities), and ongoing maintenance of the sites as these are completed by CTP, ETP and WTP. Dates for commencement for these packages are yet to be advised.

4.3 ER Inspections

No ER Inspections during the reporting period.

4.3.1 Photos

Not applicable as there were no inspections.

4.4 Endorsed Document/s

Nil

4.5 Complaints

No complaints have been reported to the ER during the reporting period.

4.6 Compliance

4.6.1 Incidents

No incidents have been reported to the ER during the reporting period.

4.6.2 Non-compliance

No non compliances have been reported to the ER during the reporting period.

4.6.3 Audits

Independent Audit status for WTP, CTP and ETP are reported (where relevant) in other sections of this Monthly Report.



5 STATEMENT OF LIMITATIONS

Healthy Buildings International (HBI) has prepared this report in accordance with the requirements of Condition A30(k) of the Sydney Metro West, Concept and Stage 1 SSI 10038 Approval (11 March 2021), and Condition A32(k) of the Sydney Metro West – The Bays to Sydney CBD SSI 19238057 Approval (24 August 2022).

The report is for the sole purposes of Department of Planning, Housing and Infrastructure (DPHI) and Sydney Metro. It has been prepared based on generally accepted practices and standards at the time it was prepared. No other warranty, expressed or implied, is made as to the professional advice included in this Report. This report did not assess any aspects relating to safety.

Where the Report indicates that information has been provided to HBI by third parties, HBI assumes no liability for any inaccuracies in or omissions to that information.

This Report was prepared based on the conditions encountered and information reviewed at this time. HBI disclaims responsibility for any changes that may have occurred after this time.

This Report should be read in full. No responsibility is accepted for use of any part of this report in any other context or for any other purpose or by third parties. This Report does not purport to give legal advice. Legal advice can only be given by qualified legal practitioners.

Except as required by law, no third party may use or rely on this Report unless otherwise agreed by HBI in writing. Except as specifically stated in this section, HBI does not authorise the use or findings of this Report by any third party.

To the extent permitted by law, HBI expressly disclaims and excludes liability for any loss, damage, cost or expenses suffered by any third party relating to or resulting from the use of, or reliance on, any information contained in this Report. HBI does not admit that any action, liability or claim may exist or be available to any third party.



HBI

Healthy Buildings International Pty Ltd

6 APPENDIX A – ER DOCUMENT ENDORSEMENT RECORDS (ETP ONLY)