

Mr Rob Sherry
Team Leader Compliance – Government Projects
Department of Planning, Housing and Infrastructure
Locked Bag 5022
PARRAMATTA NSW 2124

7 July 2025
Ref:201208-ER_DPHI-June 2025

Dear Rob

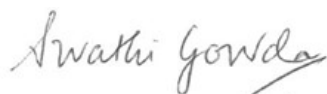
RE: Sydney Metro - Sydney Metro West SSI - ER Monthly Report for June 2025

Healthy Buildings International (HBI) submits this report to the Secretary in accordance with:

- Condition A30 (k) of the Sydney Metro West, Concept and Stage 1 SSI 10038 Approval (11 March 2021), and associated modifications (MOD 1 - 28 July 2021, MOD 2 - 3 June 2022, MOD3 – 4 July 2022, MOD 4 - 23 December 2022, MOD 5 – 20 September 2023 and MOD 6 – 6 November 2024); and
- Condition A32(k) of the Sydney Metro West – The Bays to Sydney CBD SSI 19238057 Approval (24 August 2022) and associated modifications (MOD 1 – April 2023, MOD 2 – October 2023, and MOD 3 – November 2024)

The attached summary details the key activities undertaken by Environmental Representatives for Sydney Metro – Sydney Metro West for the month of June 2025.

Yours sincerely



Swathi Gowda
Environmental Representative

Cc:

DPHI: Major Projects Portal

Sydney Metro: John Ieroklis, Maria Doumit, Andrew Hendy, Cath Snelgrove, Ari Stypel, Ryan Butler, Sarah Kemp, Syed Shah, Valerie Lebon, Sarah Lepre

Contractors: Jared Lipton (AFJV), Steph Mifsud (GLC), Sally Reynolds (JCG)

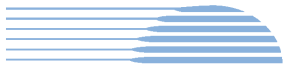


Table of Contents

| | | |
|----------|---|-----------|
| 1 | Phase B - Central Tunnelling Package | 4 |
| 1.1 | Key Construction Activities During the Period | 4 |
| 1.2 | Key Construction Activities Look Ahead..... | 5 |
| 1.3 | ER Inspections | 5 |
| 1.3.1 | Photos | 6 |
| 1.4 | Endorsed Documents | 7 |
| 1.5 | Complaints | 7 |
| 1.6 | Compliance..... | 7 |
| 1.6.1 | Incidents..... | 7 |
| 1.6.2 | Non-compliance and Potential Non Compliance | 7 |
| 1.6.3 | Audits | 7 |
| 1.7 | Looking Forward – Core Focus Areas | 8 |
| 2 | Phase F – Western Tunnelling Package..... | 9 |
| 2.1 | Key Construction Activities During the Period | 9 |
| 2.2 | Construction Activities Look Ahead | 10 |
| 2.3 | ER Inspections | 10 |
| 2.3.1 | Photos | 11 |
| 2.4 | Endorsed Documents | 13 |
| 2.5 | Complaints | 13 |
| 2.6 | Compliance..... | 14 |
| 2.6.1 | Incidents..... | 14 |
| 2.6.2 | Non-compliance..... | 14 |
| 2.6.3 | Audits | 14 |
| 2.7 | Looking Forward – Core Focus Area | 14 |
| 3 | Phase G – Eastern Tunnel Package..... | 15 |
| 3.1 | Key Construction Related Activities During the Period | 15 |
| 3.2 | Key Construction Activities Look Ahead..... | 16 |
| 3.3 | ER Inspections | 16 |
| 3.3.1 | Photos | 17 |
| 3.4 | Endorsed document/s..... | 18 |
| 3.5 | Complaints | 18 |
| 3.6 | Compliance..... | 19 |
| 3.6.1 | Incidents..... | 19 |
| 3.6.2 | Non-compliance | 19 |
| 3.6.3 | Audits | 19 |



| | | |
|-------|---|----|
| 3.7 | Looking Forward – Core Focus Areas | 19 |
| 4 | Sydney Metro Retained Obligations and Other Activity | 20 |
| 4.1 | Key Construction Activities During the Period | 20 |
| 4.2 | Key Construction Activities Look Ahead | 20 |
| 4.3 | ER Inspections | 20 |
| 4.3.1 | Photos | 20 |
| 4.4 | Endorsed Document/s | 20 |
| 4.5 | Complaints | 20 |
| 4.6 | Compliance | 20 |
| 4.6.1 | Incidents | 20 |
| 4.6.2 | Non-compliance | 20 |
| 4.6.3 | Audits | 20 |
| 5 | Statement of Limitations | 21 |
| 6 | Appendix A – ER Document Endorsement Records (ETP only) | 22 |



1 PHASE B - CENTRAL TUNNELLING PACKAGE

The Environmental Representatives for Phase B of Sydney Metro West are:

- Michael Woolley
- Maulik Bapodara
- Swathi Gowda
- Jo Robertson

Phase B – Central Tunnelling Package (CTP) is being delivered by Acciona Ferrovia Joint Venture (AFJV). Phase B of Sydney Metro West has been further broken into:

- Phase B1: Civil works
- Phase B2: Tunnelling works

The AFJV hold EPL 21610 for this Phase of works. Activities defined as Phase B2-Tunneling Works in the Staging Report for Metro West commenced during the November 2022 reporting period at Burwood North. During the previous reporting period Substantial Construction was achieved under the CTP contract for the remaining sites, with rectification works ongoing at Burwood North and SOP.

1.1 Key Construction Activities During the Period

The Bays

- Some works related to the sewer ongoing after handover. Operation of the water treatment plant and management/maintenance of areas handed over including the tunnels. Former spoil shed area handed over to the ETP Contractors and in use as a car park.

Five Dock

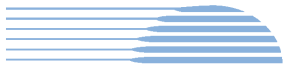
- West Shaft: Demobilisation activities completed such as installation of gates to Great North Road and removal of all items on the surface. No works observed on site during recent inspections.
- East Shaft: Final stages of demobilisation from site occurred during June comprising removal of items and clean up. All items removed from footpaths. Handover of the site occurred during the previous reporting period.
- Removal of all items in the backyard of a house at 21 Waterview Street adjacent the eastern shaft that has been used for project offices as a minor ancillary facility. Use of house ongoing.
- Water in the shaft is directed to the Bays water treatment plant for treatment.

Burwood North

- Ongoing remedial works in the nozzles and headwalls in the eastern end of the station box. Deliveries and unloading of items to the surface.
- Operation of the water treatment plant if required, with discharge direct to stormwater when operating.
- South Shaft: Use of site sheds for personnel.

North Strathfield

- Very limited works at the site which was locked up and no personnel on site permanently.
- Pumping of water from the station box to the Bays for treatment and discharge.



Sydney Olympic Park

- Use of a workshop and laydown of materials at the surface for tunnellers who are still using the site to conduct rectification works in the tunnel nozzles and tunnel maintenance. Rectification works were largely completed by the end of June.
- Several site sheds removed from the surface that were being used by Tunnelling personnel. Remaining site sheds are to be used to accommodate the workforce and remaining people from the Project Delivery Office which is to be vacated.
- Ongoing reduction of staff in the Project Delivery Office and preparation to vacate the building.

AFJV continue to manage all sites (except much of the Bays which has been handed over to ETP Contractors).

1.2 Key Construction Activities Look Ahead

- Ongoing activities as described above
- Some defect works ongoing across some sites.
- Completion of remedial works at BN and SOP in the nozzles and demobilise these activities from the sites.
- Ongoing operation of the water treatment plants at BN (if required) and the Bays.
- Ongoing management/maintenance/caretaking of sites where works are complete.

1.3 ER Inspections

There were four ER inspections conducted during the reporting period on Thursday of each week in June. The frequency of inspections at any particular site was based on risk and activities at sites, with Five Dock being inspected more frequently and North Strathfield less frequently. The following actions were raised during the inspections:

- AFJV to conduct either attended or unattended noise monitoring at the most affected receivers at SOP during noisy works.
- AFJV to conduct noise monitoring at highest impacted receiver when noisy works occur at BN given real time monitoring had ceased.
- Provide bunding for chemicals stored in the workshop laydown at SOP. Address minor spills at the diesel fuel pod.

AFJV have addressed actions raised during the ER Inspections. As site activities continue to reduce in the next few months the frequency of ER inspections will also reduce.



1.3.1 Photos



Figure 1.1 Filter press, Water Treatment Plant (The Bays).



Figure 1.2 Sewer rectification works area (The Bays).



Figure 1.3 Western Shaft – works completed (Five Dock).



Figure 1.4 Repairs completed to footpath – Second Ave (Five Dock).



Figure 1.5 Remedial works ongoing in the nozzles (Burwood North).



Figure 1.6 Station Box (North Strathfield).



Figure 1.7 Formwork for nozzle rectification work in the station box to be removed (SOP).



Figure 1.8 Remedial works in the nozzles (SOP).

1.4 Endorsed Documents

No documents were required to be signed, approved or endorsed during the reporting period.

1.5 Complaints

Based on the monthly Sydney Metro Complaint Register issued for June 2025, there were 3 complaints reported for the month with one of the complaints determined by the project to be not related to the Sydney Metro works.

One complaint related to noise during out of hours work line marking on the Great North Road. One complaint related to site restoration. The other related to litter which was determined not to be related to AFJV activities. The ongoing reduced number of complaints on the project correlates to the reduced works being conducted at the sites.

1.6 Compliance

1.6.1 Incidents

No Incidents as defined in the Infrastructure Approval were reported by AFJV during the reporting period.

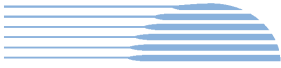
1.6.2 Non-compliance and Potential Non Compliance

During the reporting period AFJV reported they had received a Clean Up Notice from the EPA dated 6 June 2025 regarding sediment build up in White Bay. The Notice requires AFJV to prepare and implement a remediation plan to reduce the deposited sediment at White Bay Berth 2 to a specified level (depth), over a specified area by 30 September 2025.

AFJV provided a non-compliance report (NCR) for Condition D51. MOD 6 of SSI10038 issued in November 2024 included a change such that reporting under the condition to the ER and AA was required prior to works and not after works. While many aspects of the condition were complied with, some reporting was not provided prior to works, hence the raising of the NCR. There are no known planned OOHs for CTP. AFJV have stated that in the event of any planned OOH then CoA D51 requirements will be completed.

1.6.3 Audits

Nil.

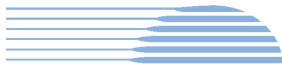


HBI

Healthy Buildings International Pty Ltd

1.7 Looking Forward – Core Focus Areas

- Management of sites where works are completed.



2 PHASE F – WESTERN TUNNELLING PACKAGE

The Environmental Representatives for Phase F of Sydney Metro West are:

- Swathi Gowda
- George Kollias
- Michael Woolley
- Maulik Bapodara
- Jo Robertson

Phase F – Western Tunnelling Package (WTP) is being delivered by Gamuda Australia Laing O’Rourke Consortium (GLC).

GLC are constructing this Phase of Sydney metro West under EPL 21676.

2.1 Key Construction Activities During the Period

During the reporting period, the following activities were being undertaken at Westmead, Parramatta and the Clyde stabling and maintenance facility which includes the Rosehill, Clyde Dive and Clyde MSF construction sites:

Westmead

- Arch pour within crossover cavern
- Station cavern lining works
- Station cavern formwork assembly and steel fixing ongoing

Parramatta

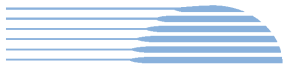
- Eastern Station Box:
 - TBM arrival preparatory works ongoing
 - D-Wall patching
- Western Station Box:
 - Box excavation
- Central Station Box: Strut and waler installation and box excavation
- Archaeology:
 - Zone 8b – Archaeological investigation and clearance works completed; area backfilled and levelled
 - Zone 8c – Archaeological investigation and clearance works commenced and underway
- WTP is operating and discharging as necessary
- Other works:
 - Staged removal of container wall and installation of steel structure ongoing
 - Substation commissioning works

Rosehill

- TBM1 and TBM 2 - on route towards Parramatta
- TBM spoil reuse on-site and commenced going off-site
- Water Treatment Plant operation including off-site discharge ongoing
- Cross passage excavation (XP79 and XP82)

Clyde Dive

- Lining Erection Machine (LEM) maintenance works ongoing, to be redeployed in Departures Spur line
- Electric Tower Crane removal commenced (late June 2025)
- Caverns ongoing



- FRP for offices above dive structure ongoing
- HV protection approach slabs commenced
- Utilities protection slab works continuing
- Acoustic Shed – removal of internals continuing

Clyde MSF

- Dewatering activities (as required)
- Stormwater installation across site
- Close out of defects across Unwin St and Fleet St
- Bulk earth works and fill across MSF (East and West) ongoing
- Excavation for future flood relief basin and hot spot removal ongoing
- Final retaining wall works including security fence installation ongoing
- PASS stockpiling and treatment for reuse
- Preparation for landscaping works and handover

SOP

- Handed over on 15 April 2025

2.2 Construction Activities Look Ahead

The key construction activities planned are similar to those listed in Section 3.1, with the addition of the following:

- Various OOHW (conducted under EPL)
- Clyde Dive - Preparatory works for tree removal, boundary retaining wall and security fence installation

2.3 ER Inspections

Currently, the sites are divided into two groups and visited typically fortnightly for ER inspections. The two groups are:

- Parramatta and Westmead
- Clyde Dive, Clyde MSF and Rosehill

Four ER inspections were conducted during the reporting period (04/06/2025, 11/06/2025, 18/06/2025 and 25/06/2025); with opportunities for improvement (OFIs) identified and the following actions (summarised) raised during the month:

Clyde Dive

- Clyde Dive – near Acoustic Shed: Maintenance action raised for general housekeeping and tidy up required in area (removal of sediment and redundant coir logs).

Clyde MSF

- Clyde MSF - Deniehy Street site access/egress: Action raised for damaged kerb drain controls to be replaced and tidy up of area where geofabric/controls are installed within the site. Recommended that appropriate requirements for using gurney/vac truck in area is reviewed/re-communicated on-site.



HBI

Healthy Buildings International Pty Ltd

Parramatta, Westmead and Rosehill

- Nil

2.3.1 Photos



Figure 2.1- Parramatta Site: Eastern Station Box - TBM arrival preparatory works and D-wall patching.

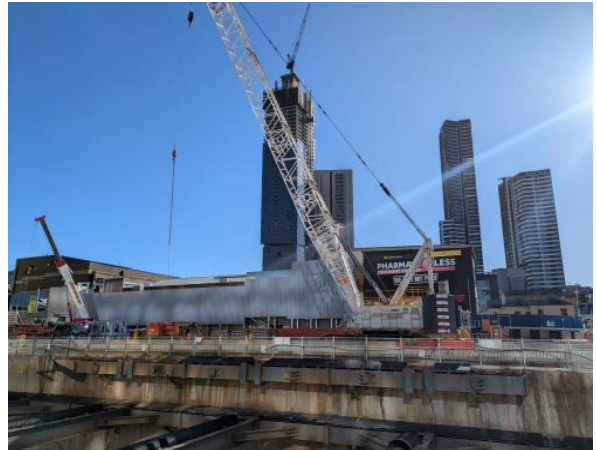


Figure 2.2- Parramatta Site: Staged container wall removal and install of steel structure ongoing.

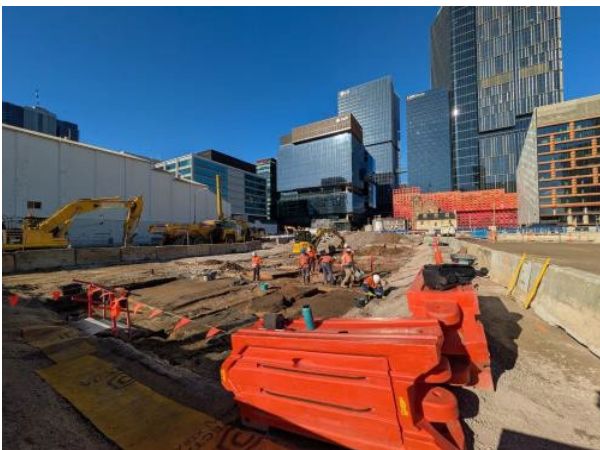


Figure 2.3 – Parramatta Site: Zone 8c – Archaeological investigation and clearance works commenced and underway.

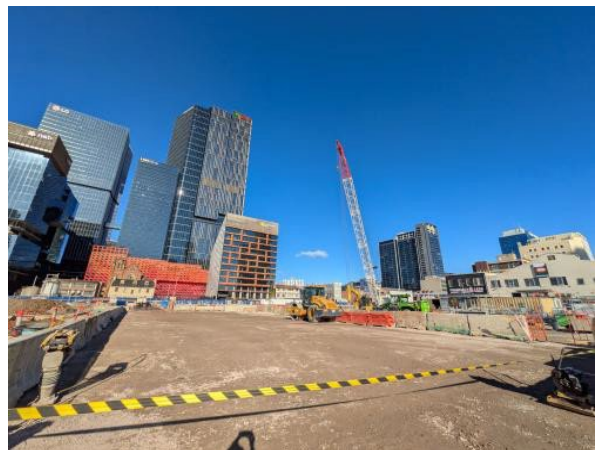


Figure 2.4 – Parramatta Site: Archaeology Zone 8b – Backfilling and levelling works completed.



Figure 2.5 – Parramatta Site: Substation commissioning works on northern end of site.

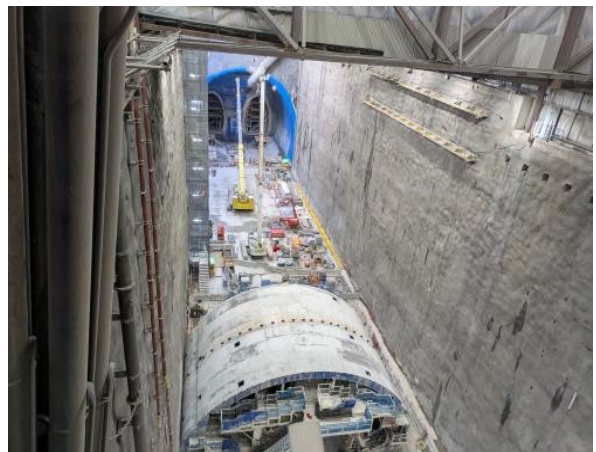


Figure 2.6 – Westmead Site: Euroform exclusion zone set -up for demobilisation.



Figure 2.7 – Rosehill Site: Water Treatment Plant.



Figure 2.8 –Rosehill Site: Concrete segments/module blocks broken up to separate reo. Spoil storage observed within shed.



Figure 2.9 – Clyde Dive Site: HV protection - concrete pours for approach slabs.



Figure 2.10 – Clyde Dive Site: Subgrade build for DN 1500 protection slab works.

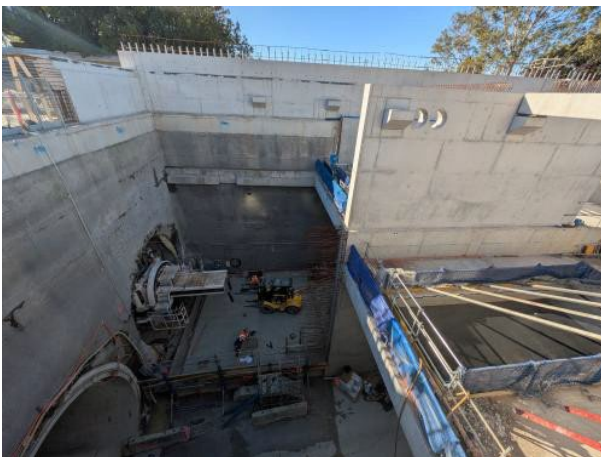


Figure 2.11 – Clyde Dive Site: Lining Erection Machine (LEM) maintenance works ongoing and scheduled to be re-launched.



Figure 2.12 – Clyde MSF Site: Stockpile management underway including drying out of material.



Figure 2.13 – Clyde MSF Site: Earthworks (filling) continuing around Water Conveyance Structure (WCS).



Figure 2.14– Unwin Street bridge, Clyde: Commencement of mesh installation on anti-gawk throw screens.



Figure 2.15 – Clyde MSF Site: Flood basin works continuing.



Figure 2.16 – Clyde MSF Site: Flood Relief Bridge – FRP works continuing for wing wall.

2.4 Endorsed Documents

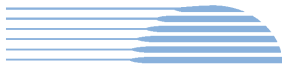
The following documents were approved or endorsed by the ER during the reporting period:

- Noise and Vibration Management Plan Rev I

GLC are progressively submitting CEMP, CEMP sub-plans and construction monitoring programs, which are currently under review including proposed progressive / risk -based process for cessation of internal GLC Inspections and monitoring requirements following substantial construction completion, stabilisation of sites and handover of sites/parts of.

2.5 Complaints

Based on the Sydney Metro Complaint Register for June 2025, there was one complaint reported during the month (summarised below), compared to four complaints in May 2025 (with one complaint recorded as not related to SM activities as per the Complaints Register in May 2025):



Clyde

- Traffic, Transport & Parking - One complaint regarding access into Rosehill industrial estate during concurrent road works from GLC and Parramatta Council.

2.6 Compliance

2.6.1 Incidents

No incidents considered to represent Incidents as defined under the Project Approval were reported to or observed by the ER during the reporting period.

Class 3 incidents related to spills reported under GLC/SM reporting system during the reporting period.

2.6.2 Non-compliance

Nil non-compliances reported to the ER during the reporting period.

2.6.3 Audits

Nil.

2.7 Looking Forward – Core Focus Area

The core focus areas for works (including upcoming works) are:

- Parramatta - TBM arrival anticipated
- Clyde Dive - Removal of acoustic shed, adjoining slabs and haul road
- Clyde Dive - Permanent boundary fence works (ATC boundary) including tree removal, retaining wall, drainage construction and security fence installation
- Utility works along local roads in the vicinity of Clyde MSF to relocate High Voltage and Low Voltage (HV/LV) route



3 PHASE G – EASTERN TUNNEL PACKAGE

The Sydney Metro West Eastern Tunnel Package is Stage 2 of the Sydney Metro West CSSI and is described as major civil construction works between The Bays and Sydney CBD, including station excavation at Pyrmont and Hunter Street and tunnel excavation between the Bays and Hunter Street. Stage 2 (SSI 19238057) was approved on the 24 August 2022.

The Environmental Representatives for the Sydney Metro West Eastern Tunnel Package are:

- Michael Woolley
- Maulik Bapodara
- Swathi Gowda
- Jo Robertson

The Eastern Tunnelling Package (ETP) is being delivered by John Holland CPB Ghella Joint Venture (JCG) with the contract being awarded in November 2022. Sydney Metro notified DPHI that the date of commencement of construction was 17 March 2023. JCG have received Environmental Protection Licence (EPL 21784) for the project.

3.1 Key Construction Related Activities During the Period

Works conducted during the reporting period included:

Hunter Street East:

- Ongoing removal of the contents of the former acoustic shed including the water treatment plant.
- Ongoing concrete deliveries and FRP activities for pours in the caverns. Use of air ventilation systems and other tunnelling support activities for works in the caverns.
- Use of the steel deck with access driveways to O'Connell Street and Hunter Street for load out of spoil using kibble and unloading frame.
- Ongoing excavation and wall support of the southern portion of the site adjoining Hunter Street. Excavation occurring up to 9.75 hours per day and 7 days per week, subject to noise levels monitored internally in adjacent commercial buildings.
- Construction of king piles using a pling rig and crane to support the new section of the steel deck in the area of the former acoustic shed.
- Use of the crib sheds and offices over Richard Johnson Square.
- Commissioning of a new water treatment plant under the steel deck. Water partially treated and directed to trade waste prior to full commissioning of the plant.

Hunter Street West:

- Completion of king piling works for the steel deck including pile cap construction.
- Use of the temporary site access driveway adjacent Skinners Hotel early in the month and later in the month removing the ramp and reconstructing a new ramp at its former location to the eastern access to Hunter Street.
- Wall support around the perimeter of the excavation with shotcrete and rock anchors.
- Ongoing sporadic excavation of the shaft.
- Completion of works to remove a wooden lintel in the wall of the Skinner's Hotel and provide replacement support. Waterproofing works on the external face of Skinners Hotel with a lime rich render.
- Management of water in rainy conditions.
- Ongoing deliveries and pedestrian management along Hunter Street after its closure outside the site.
- Noted that the Milligan's development continued on the site adjacent Hunter Street West with scaffolding set up around the building to the east of Pangas House and commencement of demolition of this building. Needles to support scaffolding were installed on the larger building on the corner with Pitt Street.

Pyrmont East:

- Ongoing excavation of the shaft and nozzles by rock hammers. Pouring of concrete blinding in front of the nozzles. Preparation for re-launch of the TBMs such as construction of the thrust frame.



- Ongoing excavation of the station and cross over caverns with road headers and rock hammers.
- Spoil load out by kibble and gantry crane in the permanent shaft and from the tunnelling activities in the temporary shaft within the acoustic shed.
- Ongoing use of the tunnel ventilation system including scrubber units.
- Use of site amenities/sheds on the steel deck to the east of the acoustic shed and use of one lane on Union Street for storage of containers and a sub-station.
- Ongoing treatment of water generated from tunnelling activities and groundwater. Discharge of treated water to stormwater system.

Pymont West:

- Ongoing excavation of the shaft using rock hammers.
- Ongoing excavation of an adit by Road Header. A scrubber unit was set up to treat dust from the operation.
- Ongoing use of the kibble for loading out spoil onto trucks. Trucks exiting to Pymont Street.
- Drainage of water to the tunnelling operations.

The Bays:

- Temporary cessation of TBM tunnelling until Pymont cavern excavation is ready for TBM arrival. Ongoing excavation and construction of cross passages XP8-XP12.
- Water treatment and discharge using the construction water treatment plant.
- Maintenance of the slurry treatment plant; spoil shed and related equipment while the TBM is not tunnelling.
- Concreting works for the invert of tunnels.
- Receipt and storage of spoil from Hunter Street and Pymont sites and load out spoil.
- General support activities such as in the workshops, segment delivery and storage and use of site offices.
- Use of the truck marshalling area by trucks waiting to load up and/or attend other project sites.
- Line marking and use of a new staff car parking area on the former CTP spoil shed area.

3.2 Key Construction Activities Look Ahead

The below works are planned to occur in the following reporting period:

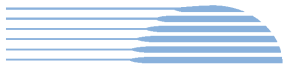
- Ongoing activities as described above.
- Ongoing excavation of the caverns (24/7) and permanent shafts at the Pymont sites. Load out of spoil.
- King pile construction at Hunter Street East.
- Ongoing removal of items from the former shed at Hunter Street East.
- Ongoing excavation of cross passages in the tunnel from the Bays.
- Set up of a minor ancillary facility at the Bays for laydown, subject to assessment.

3.3 ER Inspections

Three ER inspections were conducted during the reporting period on each Tuesday in June except for 10 June where no inspection was undertaken due to an RDO after the long weekend. One inspection included the TBM tunnels at the Bays and another inspection included caverns and adits at Hunter Street and Pymont. The following actions were raised during the inspections:

- Replace the screen in front of the portable toilets on Hunter Street at Hunter Street West.
- Improve methods to minimise tracking onto Pymont Bridge Road from the Pymont East site and increase cleaning frequency of the road.
- Investigate trucks observed to be noisy when driving past the Pymont East site.
- Better contain source of lime-based product in the closed area of Hunter Street and clean up residue in the gutter on the northern side of Hunter Street. Remove sediment built up in the southern side of Hunter Street outside of the Hunter West site.

JCG were responsive to ER feedback during inspections and for the close out of actions raised.



HBI

Healthy Buildings International Pty Ltd

3.3.1 Photos



Figure 3.1 Hunter Street East: Former Acoustic Shed area. Piling rig operating.



Figure 3.2 Hunter Street East: Excavation adjacent Hunter Street and load out of spoil from the steel deck.



Figure 3.3 Hunter St West: Rendering on east and south wall of Skinner's Hotel. Moving location of ramp from western access to eastern access on Hunter Street.



Figure 3.4 Hunter Street West: Commencement of piling for the king piles required for the steel deck.

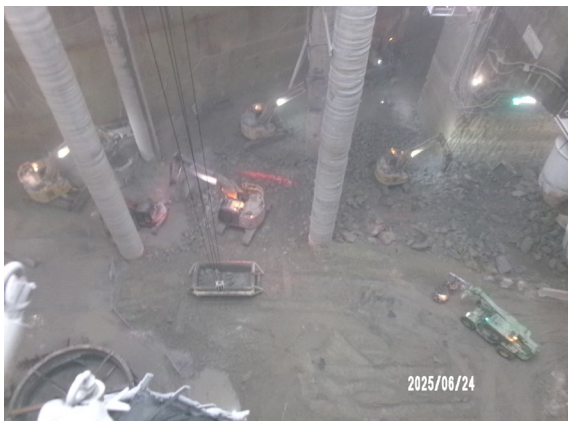


Figure 3.5 Pyrmont East: Shaft excavation by rock hammer. Load out of spoil.



Figure 3.6 Pyrmont East: Benching of Station Cavern.



Figure 3.7 Pymont West: Excavation of services adit with the road header.



Figure 3.8 Pymont West: Excavation of the base of the shaft.



Figure 3.9 The Bays: Tunnel entrance.



Figure 3.10 The Bays: Water proofing in Cross Passage 12.

3.4 Endorsed document/s

The following documents were approved or endorsed during the reporting period.

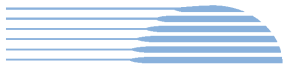
- Visual Amenity Management Plan (Rev 4);
- Air Quality Management Plan (Rev 3);
- Heritage Management Plan (Rev 4); and
- Fauna and Flora Management Plan (Rev 4).

The updated documents were revised as part of an annual update and comprise minor changes only.

3.5 Complaints

The monthly Sydney Metro complaint register for June 2025 indicated 11 complaints were reported to the Project that related to ETP activities. This compares to eight complaints received in May 2025.

Seven of the complaints related to noise from the Hunter Street East site. Four related to noise during standard hours and three to noise during OOHs. One of the complaints also related to dust. The complaints correlate to excavation for the shaft in the area adjacent Hunter Street. One of the complaints along with supporting information is under review by the Acoustic Advisor.



One complaint related to OOHs noise at Pyrmont West which was during benching works for the caverns. One complaint related to parking at the Bays.

Two complaints related to Cross Passage works in the Pyrmont area. Works continued until 10pm on the day of the complaint, when previous notifications had indicated works would cease at 6pm. Notification had been provided on the day of the complaint.

3.6 Compliance

3.6.1 Incidents

No incidents considered to represent an Incident as defined under the Project Approval were reported to the ER during the reporting period. One incident was reported under the JCG systems relating to a small oil spill from a hydraulic hose on an EWP at Hunter Street which was contained and cleaned up.

3.6.2 Non-compliance

No Non-Compliance reports (NCRs) were provided to the ER during the reporting period. The ground borne noise levels and the timing of notification of works as described above relating to complaints for Cross Passage works after 6pm is under review by the Acoustic Advisor.

3.6.3 Audits

Nil.

3.7 Looking Forward – Core Focus Areas

In the next reporting period, the ER Team will be focused on:

- General monitoring of construction activities
- Noise associated with excavation of the Hunter Street shafts; OOHs tunnelling at Pyrmont; and OOHs spoil haulage and deliveries at Pyrmont East
- Potential for tracking of dirt at the Pyrmont East and Hunter Street sites
- Review of planned ancillary facilities at Pyrmont East
- Interactions of activities with neighbouring developments at Hunter Street



4 SYDNEY METRO RETAINED OBLIGATIONS AND OTHER ACTIVITY

The Environmental Representatives for the Sydney Metro Retained Obligations and other Activities are:

- Swathi Gowda
- Jo Robertson

The Sydney Metro Retained Obligations and other Activities is being delivered by Sydney Metro with various sub-contractors delivering the works. These works do not require an EPL.

4.1 Key Construction Activities During the Period

The ER is not aware of other Sydney Metro managed construction activities during the period.

4.2 Key Construction Activities Look Ahead

As per the endorsed Phasing Report, there is an additional short-term phase of work proposed at North Strathfield (utilities), and ongoing maintenance of the sites as these are completed by CTP, ETP and WTP. Dates for commencement for these packages are yet to be advised.

4.3 ER Inspections

No ER Inspections during the reporting period.

4.3.1 Photos

Not applicable as there were no inspections.

4.4 Endorsed Document/s

Nil

4.5 Complaints

No complaints have been reported to the ER during the reporting period.

4.6 Compliance

4.6.1 Incidents

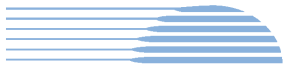
No incidents have been reported to the ER during the reporting period.

4.6.2 Non-compliance

No non compliances have been reported to the ER during the reporting period.

4.6.3 Audits

Independent Audit status for WTP, CTP and ETP are reported (where relevant) in other sections of this Monthly Report.



5 STATEMENT OF LIMITATIONS

Healthy Buildings International (HBI) has prepared this report in accordance with the requirements of Condition A30(k) of the Sydney Metro West, Concept and Stage 1 SSI 10038 Approval (11 March 2021), and Condition A32(k) of the Sydney Metro West – The Bays to Sydney CBD SSI 19238057 Approval (24 August 2022).

The report is for the sole purposes of Department of Planning, Housing and Infrastructure (DPHI) and Sydney Metro. It has been prepared based on generally accepted practices and standards at the time it was prepared. No other warranty, expressed or implied, is made as to the professional advice included in this Report. This report did not assess any aspects relating to safety.

Where the Report indicates that information has been provided to HBI by third parties, HBI assumes no liability for any inaccuracies in or omissions to that information.

This Report was prepared based on the conditions encountered and information reviewed at this time. HBI disclaims responsibility for any changes that may have occurred after this time.

This Report should be read in full. No responsibility is accepted for use of any part of this report in any other context or for any other purpose or by third parties. This Report does not purport to give legal advice. Legal advice can only be given by qualified legal practitioners.

Except as required by law, no third party may use or rely on this Report unless otherwise agreed by HBI in writing. Except as specifically stated in this section, HBI does not authorise the use or findings of this Report by any third party.

To the extent permitted by law, HBI expressly disclaims and excludes liability for any loss, damage, cost or expenses suffered by any third party relating to or resulting from the use of, or reliance on, any information contained in this Report. HBI does not admit that any action, liability or claim may exist or be available to any third party.



HBI Healthy Buildings International Pty Ltd

6 APPENDIX A – ER DOCUMENT ENDORSEMENT RECORDS (ETP ONLY)