

Mr [REDACTED]
Team Leader Compliance – Government Projects
Department of Planning, Housing and Infrastructure
Locked Bag 5022
PARRAMATTA NSW 2124

4 July 2025
Ref: 170108-ER_DPHI June 2025

Dear [REDACTED]

RE: Sydney Metro City and South West – ER Monthly Reports for June 2025

Healthy Buildings International (HBI) submits this report to the Secretary in accordance with:

- Condition A26 (j) of the Sydney Metro Sydenham to Bankstown Upgrade SSI_8256 Approval (12 December 2018) and associated modifications MOD1_Bankstown Station and Mod 2_Modification to A9, D3 and E53.

The attached summaries detail the key activities undertaken by Environmental Representatives for Sydney Metro – City and South West Sydenham to Bankstown for the month of **June 2025**.

It is noted that Sydney Metro - Sydenham to Bankstown - SSI 8256 MOD 2 - Modification to A9, D3 and E53 has been approved by NSW Planning on 3 June 2025.

Yours sincerely

[REDACTED]
Environmental Representative

Cc: Sydney Metro: [REDACTED]
AA: Available on Sydney Metro Website
Contractors: Available to Contractors on Sydney Metro Website
DPHI Compliance: Portal
DPHI Post Approvals: Available on Sydney Metro Website

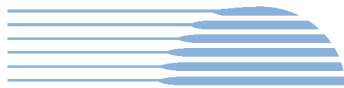


Table of Contents

1.	Sydenham to Bankstown – TSOM.....	3
2.	Southwest Metro Corridor Package 3 (SWM3) JHLOR	4
3.	Errant and Hostile Vehicle Mitigation Treatments (EHVMT)	9
4.	Sydney Metro Retained Obligations (SM).....	13
5.	Statement of Limitations	14

1. Sydenham to Bankstown – TSOM

Project Approval	Contract Package	EPL	Environmental Representative/s
SSI 8256 (S2B)	Train Service Operation and Maintenance (TSOM)	JHLOR EPL 21147 – MTR is working under JHLOR CEMP, and subplans SSI 8256 (reconfirmed with Sydney Metro 1 July 2025)	
Key Construction Activities During the Period			
<ul style="list-style-type: none"> ▪ Southwest corridor and stations <ul style="list-style-type: none"> • Installation of field devices • Cable hauling within the station platform buildings • Testing and commissioning of cabinets 			
Key Construction Activities Look Ahead			
<ul style="list-style-type: none"> ▪ Southwest corridor and stations Marrickville, Dulwich Hill, Hurlstone Park, Canterbury, Campsie, Belmore, Lakemba, Wiley Park, Punchbowl and Bankstown Stations: <ul style="list-style-type: none"> • Cable haul to the station platform buildings • Cabinet installation • Cable haul to field equipment devices • Installation of field equipment devices throughout the station and surrounding areas • Termination of cabling to field equipment • Testing and commissioning of cabinets and field equipment 			
ER Inspections			
<ul style="list-style-type: none"> ▪ The works at station platform and Metro Service Buildings (MSBs) such as cable pulling were observed by the ER while inspecting SWM3 sites, no issues were raised. 			
Photos			
<ul style="list-style-type: none"> ▪ N/A 			
Endorsed Document/s			
<ul style="list-style-type: none"> ▪ Nil 			
Non-compliance/ Incidents or Repeat Complaints			
<p>Sydney Metro has been providing summaries of complaints to DPHI daily and a summary to the ER. Responses to each complaint have been noted in each complaint report, with follow up actions often defined in revised reports. Key or repeat items of note are discussed below for the respective projects.</p> <p>There were no incidents for TSOM reported to the ER under condition A36 of SSI 8256.</p> <p>No non-compliances were reported to the ER during the reporting period</p> <p>Project related complaints:</p> <ul style="list-style-type: none"> ▪ Nil <p>Unrelated Project complaints:</p> <ul style="list-style-type: none"> ▪ Nil 			
Audits			
<ul style="list-style-type: none"> ▪ No audits 			
Looking Forward – Core Focus Areas			
<ul style="list-style-type: none"> ▪ Works at platforms within close proximity of heritage listed stations ▪ Testing and commissioning between Sydenham and Bankstown 			



2. [Southwest Metro Corridor Package 3 \(SWM3\) JHLOR](#)

Project Approval	Contract Package	EPL	Environmental Representative/s
SSI 8256 (S2B)	Southwest Metro Corridor Package 3 (SWM3) JHLOR	#21147	
Key Construction Activities - During the Period			
<ul style="list-style-type: none">Project wide: Defect works related to overhead wiring are ongoingBelmore Triangle: Laydown area operations ongoing including material stockpiles and concrete and liquid waste managementCanterbury Compound: Site offices and amenities, fuel and gas storage; implementation of the weed management planNorth Terrace Compound, Bankstown: Site offices and amenities, fuel and gas storagePunchbowl Station: Platform works ongoingCampsie: Platform works ongoingMarrickville Station: Platform works ongoingCanterbury Station – Platform works ongoingBelmore Station – Platform works ongoingWiley Park: Ongoing updates to the Tree Report. Platform works ongoing.Bankstown Station: Block work, brick work, roofing installation ongoing on Sydney Metro side building, Sydney Trains side platform works and track turnout installation ongoing, CSR works ongoing.Security fence installation, including ongoing tree impact assessment, pruning, removal and ecologist supervision. Some sections adjacent to Threatened Ecological Communities (TECs) and threatened species, e.g. Breust Street ramp (Punchbowl), Urunga Parade (Punchbowl), South Terrace (Bankstown)Vegetation management within the rail corridorOngoing operation of site office caravans at selected Metro Services Buildings (MSBs)Stockpile management including waste classification, waste tracking, load-in / load-out, management of site accesses and truck routes			
Key Construction Activities Look Ahead			
<ul style="list-style-type: none">Survey and defect inspections at all stationsBankstown Station works including extension and resurfacing of platforms to accommodate 8 car trains and track turnout upgrades on the Sydney Trains side (63 days shutdown from 28 April 2025 to mid-July 2025)Testing and commissioning between Sydenham and BankstownPlatform works at all stations			
ER Inspections			
<p>One ER inspection was conducted in the reporting period on 17 June 2025. No new actions were raised. Material storage within tree protection zone at Bankstown was discussed on site with the contractor which was later addressed by the contractor with correspondence from the project arborist confirming no impact to the mature tree from storage of light weight material.</p>			

Photos



Figure 1 – Canterbury Station – Footbridge works now complete including glass installation and paving. Discussions underway regarding removal of existing balustrade.



Figure 2 – Canterbury Station – Core drilling underway for Mechanical Gap Fillers (MGF), erosion and sediment controls in place on track and ballast.

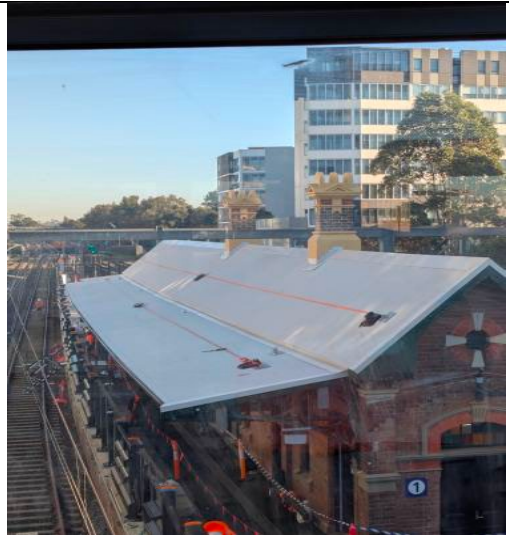


Figure 3 – Canterbury Station – Majority of roof installation is now complete.



Figure 4 – Bankstown Station - Site hive monitoring ongoing near the commuter carpark for the 63 days shutdown on the Sydney Trains side of Bankstown station. No exceedances and no complaints recorded since the commencement of these works.



Figure 5 – Bankstown Station – Sydney Metro side platform brick installation works complete.



Figure 6 – Bankstown Station – Asphalt deliveries underway for Sydney Trains side platform resurfacing works.



Figure 7 – Bankstown Station – NCR was raised regarding electrical works and impacts to heritage.



Figure 8 – Bankstown Station – Trackworks nearing completion. Installation of track turnouts, ballast, sleepers, surface drainage, intertrack drainage, overhead wiring, signals and components as well as trackside equipment has been recently completed.

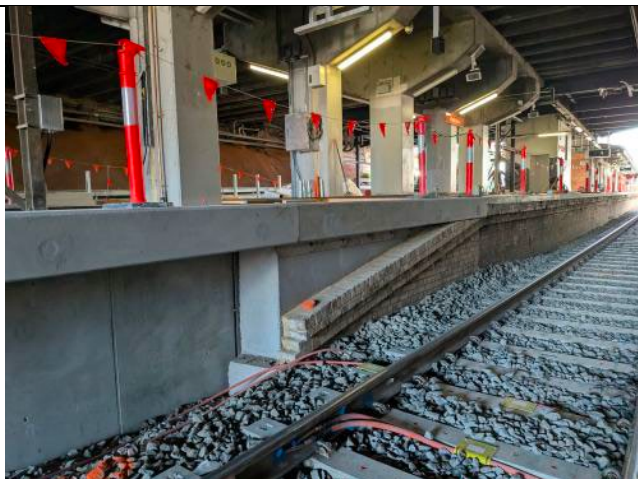


Figure 9 - Bankstown - Sydney Trains side platforms – heritage interpretation.



Figure 10 – Punchbowl – Landscaping works underway.



Figure 11 – Punchbowl – Vulnerable species notice on display to inform work crews regarding environmental sensitivities within the rail corridor and hold point details. Downy wattle was observed growing in the ballast within the rail corridor. Further discussions to be held between SM and the operators for future potential issues that may arise due to this vulnerable species sightings in ballast and operation zone.

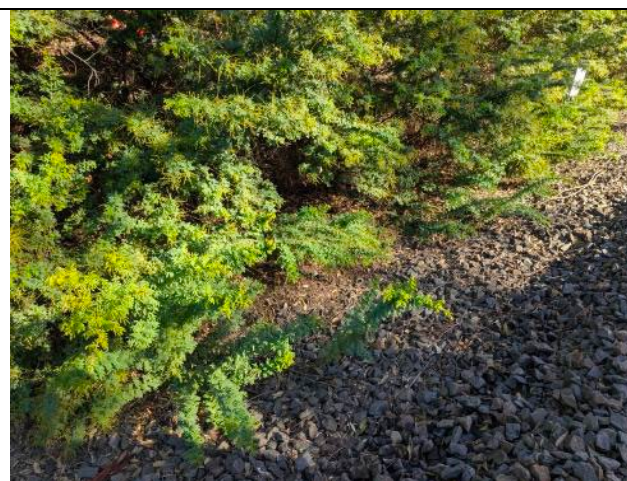


Figure 12 – Punchbowl – Downy wattle was observed growing in the ballast within the rail corridor. Further discussions to be held between SM and the operators for future potential issues that may arise due to this vulnerable species sightings in ballast and operation zone.

Endorsed Document/s

- SWM3 CEMP Rev07 – 24/06/2025
- SWM3 CNVMP Rev03 – 24/06/2025
- SWM3 CHMP Rev03 – 30/06/2025
- SWM3 CSWMP Rev03 – 24/06/2025
- SWM3 CVAMP Rev03 – 27/06/2025

Non-compliance/ Incidents or Repeat Complaints

Summaries of CSW complaints are now received on a weekly basis. Complaints are discussed where relevant for each package below

There was one non-compliance reported to the ER during the period.

- 05/06/2025 – NCR – NAH16 – Fixing of lighting and electrical conduits to heritage fabric at Bankstown Station

There were no incidents reported to the ER under Condition A36 of SSI 8256.

During the period, no Class 3 environmental incident was reported to the ER. No other Class 3 environmental incidents were reported:

The ER is aware of the following complaints received in June 2025 related to the SWM3 works. The number of complaints decreased in this reporting period compared to the previous month due to main works being conducted at Bankstown:

- Two unrelated noise complaints at Dulwich Hill.
- One complaint related to visual amenity

Audits

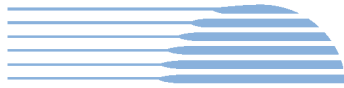
No further ER input with regards to SWM3 audit

Summary of Environmental Performance

Environmental risks are consistent with out of hours works during possessions and maintaining compliance with the Tree Report during the security fence installation. Actions raised during ER inspections are closed out within the agreed timeframe with useful supporting documentary evidence provided.

Looking Forward – Core Focus Areas

- Management of ERSED controls generally



- Management of noise during out-of-hours work during possessions
- Management of tree impacts, Plant Community Types (PCTs) and Threatened Environmental Communities (TECs) during construction of security fencing along the alignment, and maintenance of the buffer zone
- Compliance with the planning approval for the use of land outside the project boundary, including the establishment and use of ancillary facilities



3. Errant and Hostile Vehicle Mitigation Treatments (EHVMT)

Project Approval	Contract Package	EPL	Environmental Representative/s
SSI 8256 (S2B)	Errant and Hostile Vehicle Mitigation Treatments (EHVMT) Martinus Rail	No EPL	
Key Construction Activities - During the Period			
<ul style="list-style-type: none"> ▪ Illawarra Road – Footpath, steel barrier and bollard installation complete. Site has been demobilised. ▪ Livingstone Road – Form Reo Pour (FRP) works underway ▪ Albermarle Street – Girder delivery and placement complete ▪ Wardell Road - Traffic Management Plan (TMP) implementation, line marking and road barrier removal ▪ Garnett Street - FRP works underway ▪ Duntroon Street – Piling works completed ▪ Melford Street - All piles excavated, concrete poured and FRP works ongoing ▪ Canterbury Road – Footpath works near Canterbury signal hut ongoing, works on overbridge to commence soon, piling works recommenced ▪ Loch Street –TMP implementation ▪ Burwood Road - Barrier installation works ongoing ▪ Moreton Street – Planning for works is ongoing ▪ Haldon Street – Site preparation works ongoing ▪ King Georges Road - Piling works completed, concrete pouring ongoing ▪ Punchbowl Road - TMP Stage 1 implementation, anti-throw screens removal upcoming ▪ Stacey St – Stage 2 hydro demolition complete, footpath works underway ▪ Carnation Ave – Concrete barrier works complete 			
Key Construction Activities Look Ahead			
<ul style="list-style-type: none"> ▪ Punchbowl Road, Punchbowl – Removal of steel barriers and concrete pours for the southwest retaining wall ▪ Melford St, Hurlstone Park – Installation of off-structure beams (OSB) bridge girders ▪ King Georges Road, Wiley Park – Installation of pre-cast barriers ▪ Burwood Road, Belmore – Installation of pre-cast barriers ▪ Albermarle St, Dulwich Hill – Sydney Trains HV feeder 761 removal, delivery and installation of the off-structure beam, demolition of existing balustrade fence, installation of screens ▪ Duntroon St, Hurlstone Park – Barrier works ▪ ng of off-structure beams using crane ▪ Livingstone Road, Marrickville – Remediation works, barrier works ▪ Canterbury Road, Canterbury – Overbridge remedial works, service searching and modification of northeast hoarding ▪ Loch St, Campsie – Overbridge remedial works and modification of northeast hoarding ▪ Haldon St, Lakemba – Piling works on the north side of the rail corridor ▪ Punchbowl Rd traffic controls implementation and anti-throw screens removal ▪ Haldon St - Piling pad preparation works 			
ER Inspections			
<ul style="list-style-type: none"> ▪ ER inspections are undertaken based on scope/risk levels of the activities. One ER inspection was undertaken in the reporting period on 25/06/2025 with the key focus on erosion and sediment controls and tree protection zones management. One new issue was raised regarding appropriate labelling of chemical and water containers which was promptly addressed by the contractor. 			

Photos



Figure 1 – Stacey St, Bankstown – Unknown, unlabelled, unbanded Intermediate Bunded Container (IBC) was observed to be stored underneath Stacey St bridge works area. Martinus to ensure all dangerous goods and chemical containers are appropriately labelled and banded.



Figure 2 – Stacey St, Bankstown – Within the approved minor ancillary facility area at North terrace, unsecured stockpiles of spoil and rock/concrete were observed nearby trees adjacent to the North Tce site compound, Martinus to advise disposal timeframe. There is a risk of these stockpiles to be tampered with since they are outside site compound ATF area.



Figure 3 – Stacey St – Stage 2 Footpath works ongoing.

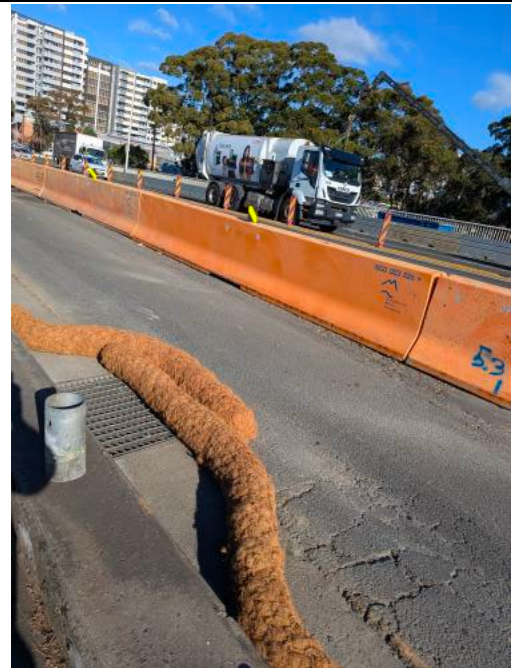


Figure 4 – Stacey St overbridge – ERSED controls in place and refreshed recently.



Figure 5 – South Tce – At South Tce worksite location, it was noted that excavation and preparation works for piling had begun.



Figure 6 – South Tce – Minor Ancillary Facility in use.



Figure 7 - Moreton St, Lakemba - Bridge girder placement completed in WE52, concrete barrier works ongoing.



Figure 8 – Dudley St, Dulwich Hill – Steel barrier installation works commenced adjacent to the PCT area. Good practice noted on site including appropriate signage in place around PCT at Dudley St, Dulwich Hill and all workers have been inducted/informed about the PCT requirements by the project ecologist.

Endorsed Document/s

- OOHW#18 – Rev B – 11/06/2025
- OOHW#19 – Rev A – 30/06/2025

Non-compliance/ Incidents or Repeat Complaints

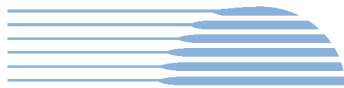
Since commencement of City metro services passenger operations on Monday 19 August 2024, Sydney Metro is now providing summaries of CSW complaints on a weekly basis (was provided daily until 16 August 2024) to DPHI and ERs covering complaints related to remaining construction works.

There was no non-compliance raised by the ER or reported to the ER during the reporting period.

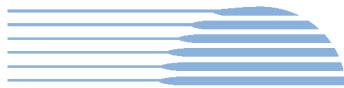
There were no incidents reported to the ER under Condition A36 of SSI 8256.

There were no Class 3 environmental incidents reported to the ER during the reporting period.

ER is aware of the following complaints received during the reporting period. The number of noise related complaints increased compared to the previous month due to OOHW activities increasing especially at Canterbury Station and overbridge:



- | |
|---|
| <ul style="list-style-type: none">▪ Sixteen complaints related to standard construction hours/out-of-hours noise due to increase in road occupancy licence driven out of hour works during night time (period 2)▪ One complaint related to property access, business impacts▪ One complaint related to business impacts▪ One complaint related to visual amenity |
| Audits |
| No ER involvement in audit activity including Independent Environmental Audits. |
| Looking Forward – Core Focus Areas |
| <ul style="list-style-type: none">▪ Management of erosion and sediment controls generally▪ Management of noise and dust during out-of-hours works▪ Management and protection of retained heritage items▪ Management of TECs |



4. [Sydney Metro Retained Obligations \(SM\)](#)

Project Approval	Contract Package	EPL	Environmental Representative/s
SSI 8256 (S2B)	Sydney Metro Retained Obligations (SM)	Not applicable	
Key Construction and other Activities			
SM	▪ Working with MTR for various dynamic testing related activities for Southwest		
ER Inspections			
	▪ Nil		
Endorsed Document/s			
ER	▪ SMRO CTR Q3Q4 2024 – 5/06/2025		
Non-compliance/ Incidents or Repeat Complaints			
Since commencement of FPS, Sydney Metro now provides summaries of CSW complaints on a weekly basis to DPHI and ERs covering complaints related to remaining construction works. Key or repeat items of note are discussed below for the respective projects, where applicable or under respective CSW packages. No incidents were reported to the ER during the reporting period. No non-compliances were reported to the ER during the reporting period:			
Audits			
SM	Nil		
Looking Forward – Core Focus Areas			
SM	Collaborating with MTR and MTS to ensure the required documents are ready or the First Passenger Service.		

5. Statement of Limitations

Healthy Buildings International (HBI) has prepared this report in accordance with the requirements of Condition A24(l) of the Sydney Metro Condition A26(j) of the Sydney Metro Conditions of Approval (CSSI 17_8256). The report is for the sole purposes of Department of Planning, Housing and Infrastructure (DPHI) and Sydney Metro. It has been prepared based on generally accepted practices and standards at the time it was prepared. No other warranty, expressed or implied, is made as to the professional advice included in this Report. This report did not assess any aspects relating to safety.

Where the Report indicates that information has been provided to HBI by third parties, HBI assumes no liability for any inaccuracies in or omissions to that information.

This Report was prepared based on the conditions encountered and information reviewed for the period of reporting. HBI disclaims responsibility for any changes that may have occurred after this time.

This Report should be read in full. No responsibility is accepted for use of any part of this report in any other context or for any other purpose or by third parties. This Report does not purport to give legal advice. Legal advice can only be given by qualified legal practitioners.

Except as required by law, no third party may use or rely on this Report unless otherwise agreed by HBI in writing. Except as specifically stated in this section, HBI does not authorise the use or findings of this Report by any third party.

To the extent permitted by law, HBI expressly disclaims and excludes liability for any loss, damage, cost or expenses suffered by any third party relating to or resulting from the use of, or reliance on, any information contained in this Report. HBI does not admit that any action, liability, or claim may exist or be available to any third party.