

Project update – Chatswood Dive Site

August 2025

Sydney Metro is Australia's biggest public transport project.

Services started in May 2019 in the city's North West with a train every four minutes in the peak. On 19 August 2024, services began on the new section of the M1 Line, including 15.5 kilometres of metro rail extending from the existing Metro North West at Chatswood, under the harbour and through the Sydney CBD and onto Sydenham. Commuters can now catch metro services every four minutes in the peak from new stations at Crows Nest, Victoria Cross, Barangaroo, Martin Place, Gadigal and Waterloo, and new metro platforms at Central.

RMA Group is carrying out remediation work within the residual land at Chatswood Dive Site. From August 2025, RMA Group is also delivering works to construct a new shared path along Mowbray Road. The path will provide a safe and convenient connection for pedestrians and cyclists, linking the Pacific Highway and Mowbray Road intersection to the extended Frank Channon Walk. The Mowbray Road shared path is designed to support future growth in active transport, complementing Willoughby Council's new cycleway from Hampden Road to St Leonards.

Remaining work at Chatswood Dive Site

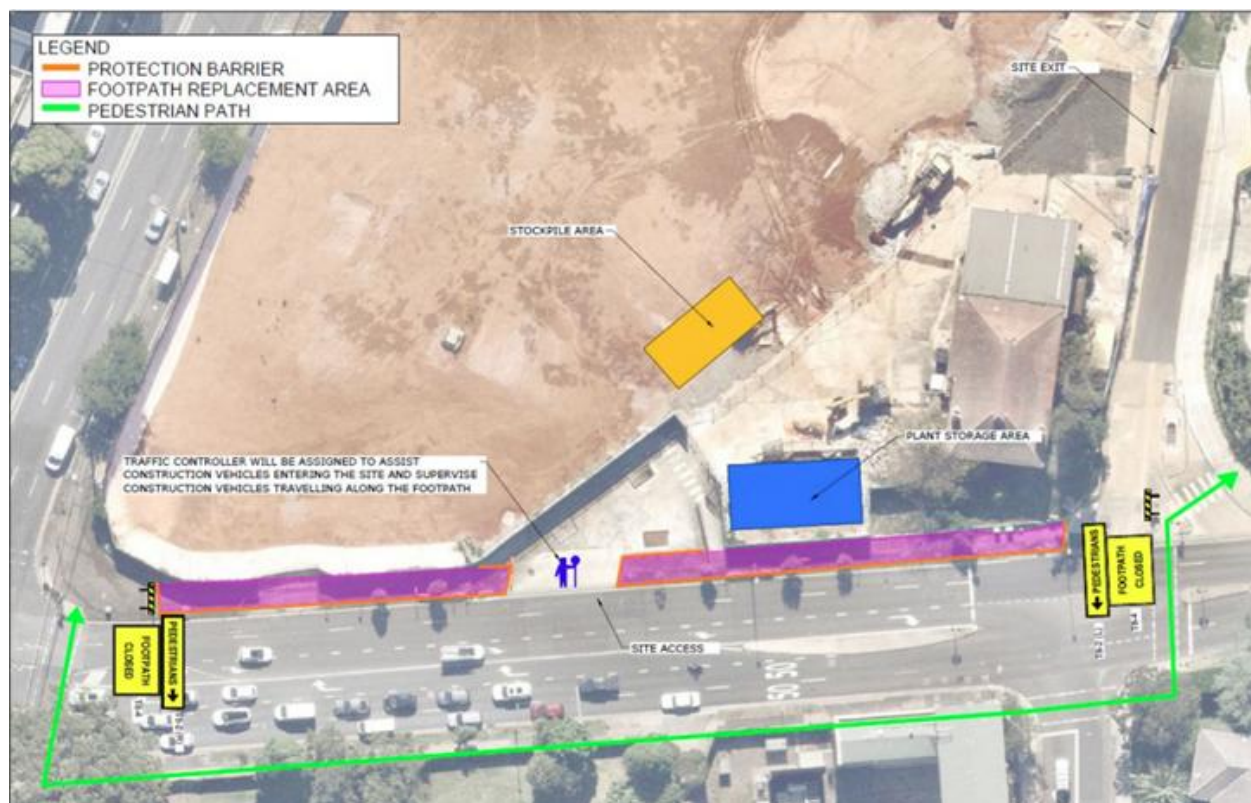
Standard project work hours are **Monday to Friday, 7am to 6pm and Saturday, 8am to 6pm.**

Location	Work during standard hours
Chatswood Dive Site residual land	<ul style="list-style-type: none">• Remediation work including concrete saw-cutting and hammering, excavation, compaction, removal of contaminated soil and offsite disposal of the contaminated soil• Constructing a driveway within the remediation site boundary, including placing and finishing concrete.• Soil sampling, ongoing noise & vibration monitoring & delivery of materials and equipment• General maintenance activities including adjustments to site hoarding
Out-of-hours work (night) work hours – due to the nature of some activities and for the safety of community and workers, some work will occur outside standard construction hours	
Location	Out-of-hours work
Mowbray Road footpath between Pacific Highway and Frank Channon Walk	<p>24/7 from 4 August until late 2025</p> <ul style="list-style-type: none">• Northern side footpath closed, pedestrian diversion in place to southern footpath• Signage will be in place to help direct pedestrians and cyclists. <p>4 August from 8pm to 5am</p> <ul style="list-style-type: none">• Installation of temporary fencing and temporary barriers <p>4-15 August from 8pm to 5am</p> <ul style="list-style-type: none">• Demolition and removal of existing footpath using saw-cut and tipper truck.• This work will cause some noise. Noise monitoring will be on-going to ensure works stay within allowable noise limit. <p>18 August until mid-October 2025 from 8pm to 5 am</p> <ul style="list-style-type: none">• Alterations to service pits to lift the pit to shared path level using pit lifters.

What to expect

- Traffic control and directional signage will be in place to ensure the safety of workers, pedestrians, and the wider community.
- The existing footpath along Mowbray Road will be closed for the duration of the works. Pedestrians will be guided to use the designated crossings at the Pacific Highway and Mowbray Road intersections. Traffic controllers will be on site to assist and ensure safe passage.
- To allow the work to be carried out safely, a single eastbound lane closure on Mowbray Road is planned during the following periods:
 - Weeknights: Monday to Friday, 8pm to 5am
 - Weekends: Friday 8pm to Monday 5am
 - Weekdays: Monday to Friday, 10am to 2:30pm (subject to confirmation)
- Construction equipment to be used includes hand tools, saw-cutter, pit lifters, tipper trucks, concrete agitator trucks, concrete trowel machines, asphalt pavers, concrete saw, excavator, skid steer loader & vibratory roller
- Night works will require site lighting.
- Access to buildings and driveways will be maintained at all times.
- Some construction activities will generate noise. The project team will make every effort to minimise disruption, including the use of non-tonal reversing beepers and instructing workers to keep noise to a minimum. Noise monitoring will be ongoing to help ensure comfort for the local community.


Location of works





Thank you for your cooperation and understanding while we complete this essential work.

If you have any questions about the remaining work at the Chatswood Dive Site, please contact the Sydney Metro Project Communications Team by calling 1800 171 386 (24-hour community information line) or emailing sydneymetro@transport.nsw.gov.au

Contact us

 24-hour Community Information Line **1800 171 386**

 **sydneymetro@transport.nsw.gov.au**

 Sydney Metro City & Southwest, PO Box K659,
Haymarket NSW 1240



Translating and interpreting service

If you need help understanding this information, please contact the Translating and Interpreting Service on **131 450** and ask them to call us on **1800 171 386**