

The first section of track has been laid at Luddenham.

Making tracks towards a new world-class metro service

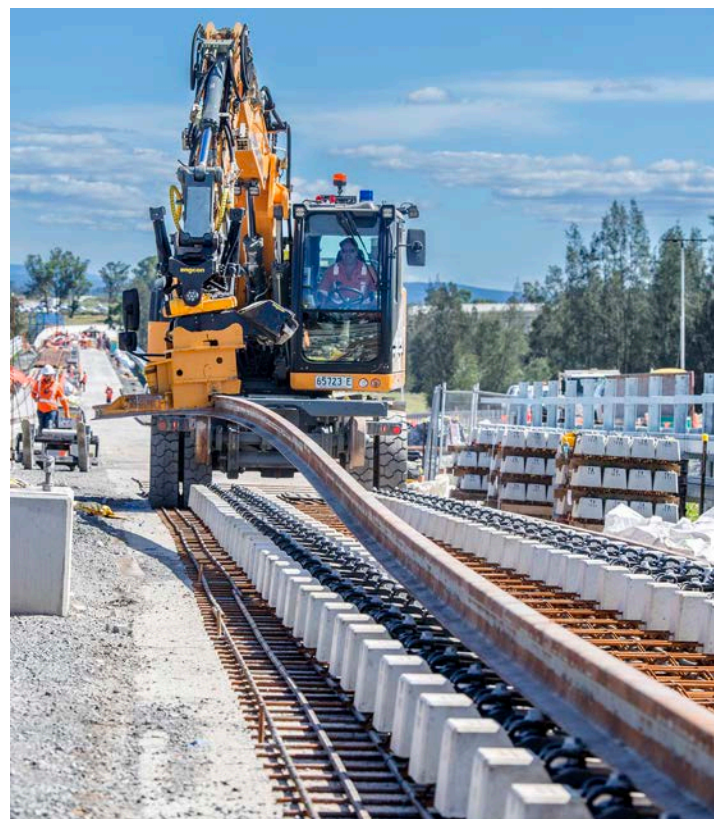
Track laying is officially underway for the Sydney Metro–Western Sydney Airport project (SM-WSA), marking a major milestone for the new metro line that will transform the way travellers and local communities connect in Western Sydney and beyond.

The first kilometre of track for the project was laid at Luddenham recently, as part of the 23-kilometre metro line that will link St Marys and Bradfield via the new Western Sydney International (Nancy-Bird Walton) Airport. Rail strings are being welded into 120-metre lengths at a number of laydown sites along the alignment, before being carefully positioned, adjusted and concreted into place.

More than 100 kilometres and 6408 tonnes of Australian-made steel rail will be progressively installed over the next 14 months, with up to 100 metres of track being laid each day.

The track laying is part of the Stations, Systems, Trains, Operations and Maintenance (SSTOM) package of works for the SM-WSA. The project will deliver a fast, reliable and easy metro service connecting residents with job hubs and travellers from the new airport with the rest of Sydney's public transport system.

PLM is delivering the SSTOM package of works for SM-WSA.



Rail strings are carefully positioned, adjusted and concreted into place.



Australian Government

BUILDING AUSTRALIA





CPB Contractors United Infrastructure joint venture (CPBUI JV) successfully completed all above ground enabling works for the SM-WSA Surface and Civil Alignment Works (SCAW) package.

Completion of all enabling works paves the way for track laying

SM-WSA has marked a major milestone with the practical completion of all surface civil works, paving the way for the track laying for the project which is now underway.

The completion of the Surface Civil and Alignment Works (SCAW) package signals the end of all enabling works across the alignment.

These works formed the foundation for the next phase of the project and included:

- 3.2 kilometres of elevated viaduct at Orchard Hills and Luddenham
- 6.7 kilometres of earthworks for track formation
- A 190-metre-long rail bridge over the new M12 motorway

- A 20-metre-long rail bridge within the airport
- Temporary and permanent access roads
- Bulk earthworks for the stabling and maintenance facility site.

More than 2500 workers contributed more than 1.5 million hours to deliver this critical phase of the project.

With civil works now complete, the project has entered its next stage – track laying and station fit-outs – bringing Western Sydney one step closer to a modern, high-capacity metro line.

CPB Contractors and United Infrastructure joint venture (CPBUI JV) delivered the SCAW contract for SM-WSA project.



A view of the Viaduct from the Luddenham site.



A view of the 190-metre rail bridge constructed over the new M12 Motorway project.

Construction ramp-up continues

From St Marys to Bradfield, construction is in full swing at all SM-WSA sites.

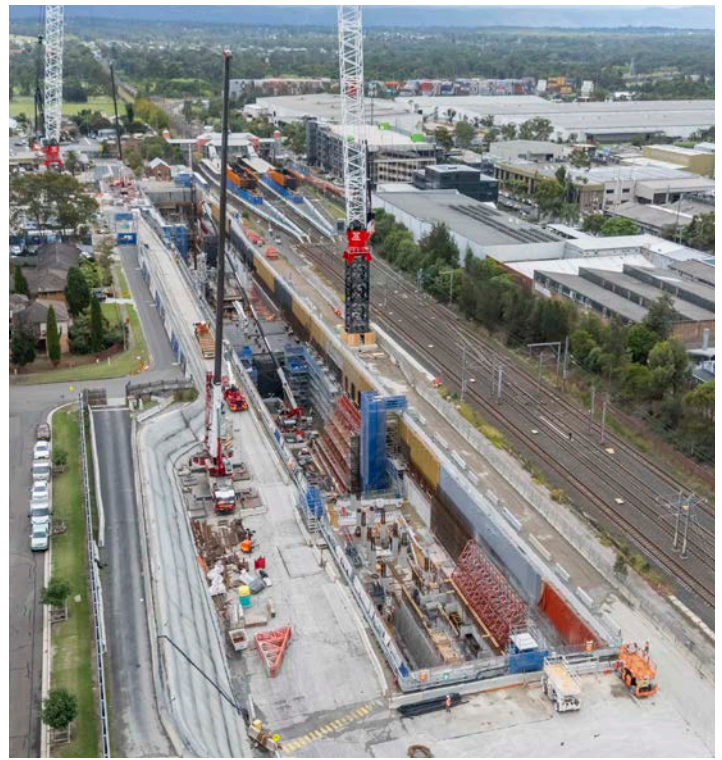
At the St Marys Station site, the team is preparing to pour the mezzanine level slab, the future home of key station systems. Construction at the Orchard Hills Station site continues with concrete works and preparation for utility installations.

The Stabling and Maintenance Facility at Orchard Hills is powering through electrical and drainage works, while Luddenham Station is taking shape with steel structures now in place. At Airport Terminal, more than 8500 cubic metres of concrete has already been poured – enough to fill nearly 18 Olympic swimming pools!

At Bradfield, the commuter carpark and station structure are underway.

Together, these works are shaping a connected future for Western Sydney and beyond.

PLM is delivering the SSTOM package of works for SM-WSA.



The St Marys Station site.



The Bradfield Station site.



The Airport Business Park Station site.



The Orchard Hills Station site.



The Airport Terminal Station site.



Cleaner, greener metro: HVO powers progress

SM-WSA has reached a major sustainability milestone, with renewable diesel (HVO100) now being used at the Airport Terminal Station site.

Hydrotreated Vegetable Oil (HVO) is a clean-burning diesel alternative made from waste products such as used cooking oils and animal fats.

It is a drop-in replacement for regular diesel, meaning no modifications are needed to existing machinery.

By switching to HVO, the project is significantly reducing harmful emissions, helping improve local air quality and lowering the project's overall carbon footprint.

This move supports the project's broader sustainability goals and demonstrates how innovative fuel choices can have real-world environmental benefits on major infrastructure projects.

PLM is delivering the SSTOM package of works for SM-WSA.

Left: Renewable diesel (HVO100) now being used at the Airport Terminal Station site.

Designs for Airport metro stations unveiled

Artist impressions of the two future metro stations at Western Sydney International Airport have been released, offering a glimpse into how Sydney Metro – Western Sydney Airport (SM-WSA) will welcome the world to Western Sydney. The newly released visuals for the Airport Terminal and Airport Business Park stations showcase contemporary, accessible designs that will not only connect travellers to Greater Sydney but also support the needs of the region's growing communities.

Reflecting the project's commitment to cultural and environmental sensitivity, the colour palettes for all stations along the SM-WSA alignment – from St Marys to Bradfield – have been inspired by Connecting with Country themes tailored uniquely to each station location and developed to reflect the cultural and environmental context of each location.

The theme for Airport Business Park Station is representing the source of material culture such as tools and stones used in trade. Each object drawn from the land is considered a part of Country and carries its inherent power. The theme for Airport Terminal Station is interpreted in the design as welcoming and healing creating a space to welcome travellers to heal and cleanse.

These design themes reflect a deep respect for Country and culture, ensuring the new stations are not only gateways to the region but also meaningful places grounded in identity and story.

PLM is delivering the SSTOM package of works for SM-WSA.



An artist's impression of Airport Terminal Station (design subject to change).



An artist's impression of Airport Business Park Station (design subject to change).



A life-size replica of the future Western Sydney Airport metro trains.

First look at SM-WSA new metro train

A life-size mock-up of an SM-WSA train carriage is providing a window into what future travel will look like on the metro service in Western Sydney.

Assembled from a flat pack in a Western Sydney warehouse, the carriage is a full-scale replica that closely mimics the shape, size and design features of the train – perfect for evaluating and finalising design aspects like interior lighting, emergency features, and passenger information display systems.

Testing of the mock-up carriage has left no stone unturned to ensure passengers enjoy a world-class metro experience when the new WSA line opens.

Representatives from diverse user groups, including people with limited mobility and sensory challenges, have had a chance to test out the carriage and have provided valuable feedback about comfort, accessibility and safety.

More than 600 customers have taken part in the testing, helping ensure the final design meets the needs of all passengers.

PLM is delivering the SSTOM package of works for SM-WSA.



Evaluation and testing has been taking place inside the carriage.

Interfacing projects in Greater Western Sydney

There are a number of major infrastructure projects underway and planned in Greater Western Sydney. These projects will support growth and underpin the development of key precincts in the Western Parkland City.

We are coordinating how we communicate with the local community to ensure residents and businesses understand who is carrying out the work and who to contact with any enquiries or complaints.

If you have any questions or need to contact a particular project, use the reference below for the right project contact details.

Western Sydney International (Nancy-Bird Walton) Airport (WSI)

1800 972 972

info@wsaco.com.au

westernsydney.com.au

Western Sydney International Experience Centre,
100 Eaton Road, Luddenham NSW 2745

Transport for NSW – M12 Motorway

1800 517 155

m12motorway@transport.nsw.gov.au

nswroads.work/m12

Sydney Water

1800 238 881

uppersouthcreek@sydneywater.com.au

Department of Planning, Housing and Infrastructure

1300 420 596 (9am-5pm, Monday-Friday) and ask for the Western Sydney Aerotropolis team

aerotropolis@dpie.nsw.gov.au

planning.nsw.gov.au

Bradfield Development Authority

1800 321 999

hello@bda.nsw.gov.au

nsw.gov.au/bradfield-development-authority

Transport for NSW – roads and carpark projects

1800 684 490

1800 775 465 (emergency 24/7)

projects@transport.nsw.gov.au

transport.nsw.gov.au/projects

All smiles at St Marys over beam installation success

The new St Marys Station footbridge is taking shape. Beams spanning the railway tracks have started to be lifted into place during planned track closedowns, to form the key structural component for the bridge deck.

In coming months, the team will be installing concrete stairs for the platforms and establishing a working deck to build the new bridge overhead across the platforms.

Once complete, the fully accessible footbridge will play the vital role of allowing customers to easily switch between the new metro platforms and suburban trains on the T1 Western Line. It will also provide a new integrated connection between the station and Harris Street, the multi-storey car park and the bus interchange.

St Marys Station will become an important transport gateway with the arrival of the new metro, connecting customers with Sydney's rail, metro and bus systems. To catch a glimpse of the future, view the St Marys Footbridge Place, Urban Design and Corridor Landscape Plan (PUDCLP) on the project webpage.

Transport for NSW in partnership with Laing O'Rourke is delivering the new footbridge and northern plaza at St Marys Station as part of the SM-WSA project.



Please scan the QR code or visit **transport.nsw.gov.au/stmarys** where you will find more information, view the plan and provide feedback via the online form.



Progress made on the footbridge at St Marys.



Sharing the SW-WSA story at Luddenham Show.

Connecting with communities

Community engagement is such an important part of what we do at SM-WSA. It gives us the opportunity to hear from you first-hand and talk about the new metro line we are delivering for the people of Western Sydney.

So far this year, we have had conversations with more than 2300 community members at 37 events including the Luddenham Show, Easter Show, the Fun with Robots school holiday program at Werrington, Bringelly community drop-in session and the Metro Minds school program.

In February, the SM-WSA team attended the annual Luddenham Show, engaging with more than 300 community members over two days. Showgoers enjoyed snapping photos with the Sydney Metro photo wall, building model trains, and discovering more about the significant infrastructure project that will transform travel in the local area.

Visitors were excited to hear about what the future Luddenham metro station will look like, travel times to the airport once the line becomes operational, and potential future extensions of the WSA line.

A huge thank you to everyone who came to visit the Sydney Metro stand at the Luddenham Show! We look forward to seeing you at future community events.



CPBUI's Community Relations team joined the students and Principal from Samuel Terry Public School for the donation of the community mural as part of their Harmony Day celebrations.

Celebrating Aboriginal culture through art and connection in Western Sydney

Over the past 12 months, SM-WSA has partnered with local Aboriginal artist Peter Jensen to deliver a cultural enrichment program across a series of community and school-based events in Western Sydney.

The program aimed to strengthen cultural understanding and connection to Country through immersive Aboriginal-led experiences for students, families and the wider community.

Across two community events, more than 1500 people took part in cultural workshops and interactive experiences, including ochre painting, Dreamtime storytelling, yidaki performances, basket weaving, bush tucker planting, and traditional Aboriginal food tasting. Aboriginal-led organisations including Muru Mittigar, Wilka Thalita, Yaali Collective, Walkabout Barber and others played a central role in delivering the program.

Cultural workshops led by Peter Jensen hosted 60 Aboriginal and Torres Strait Islander students from Glenmore Park and Jamison high schools. The sessions focused on cultural knowledge-sharing, storytelling,

ochre art and traditional practices such as fire-making and spear throwing.

A community-created mural led by Peter was developed during the first community event. Featuring local totems, rivers, roads and the rainbow serpent, the artwork tells a story of connection to Country and community. In early 2025, it was donated to Samuel Terry Public School in Cranebrook, where it now hangs in the school's library alongside interpretive signage. The mural will serve as a lasting legacy, with more than 900 students and staff expected to view it over the next decade.

This program reflects Sydney Metro's ongoing commitment to celebrating Aboriginal culture, connecting with local communities, and supporting culturally meaningful outcomes across Western Sydney.

The Indigenous Art and Cultural Enrichment Program, a Community Benefits Program initiative, was delivered by CPBUI, the SCAW contractor for SM-WSA. The SM-WSA SBT and SSTOM contractors, CPB Contractors Ghella and PLM respectively, also partnered to support the community events.



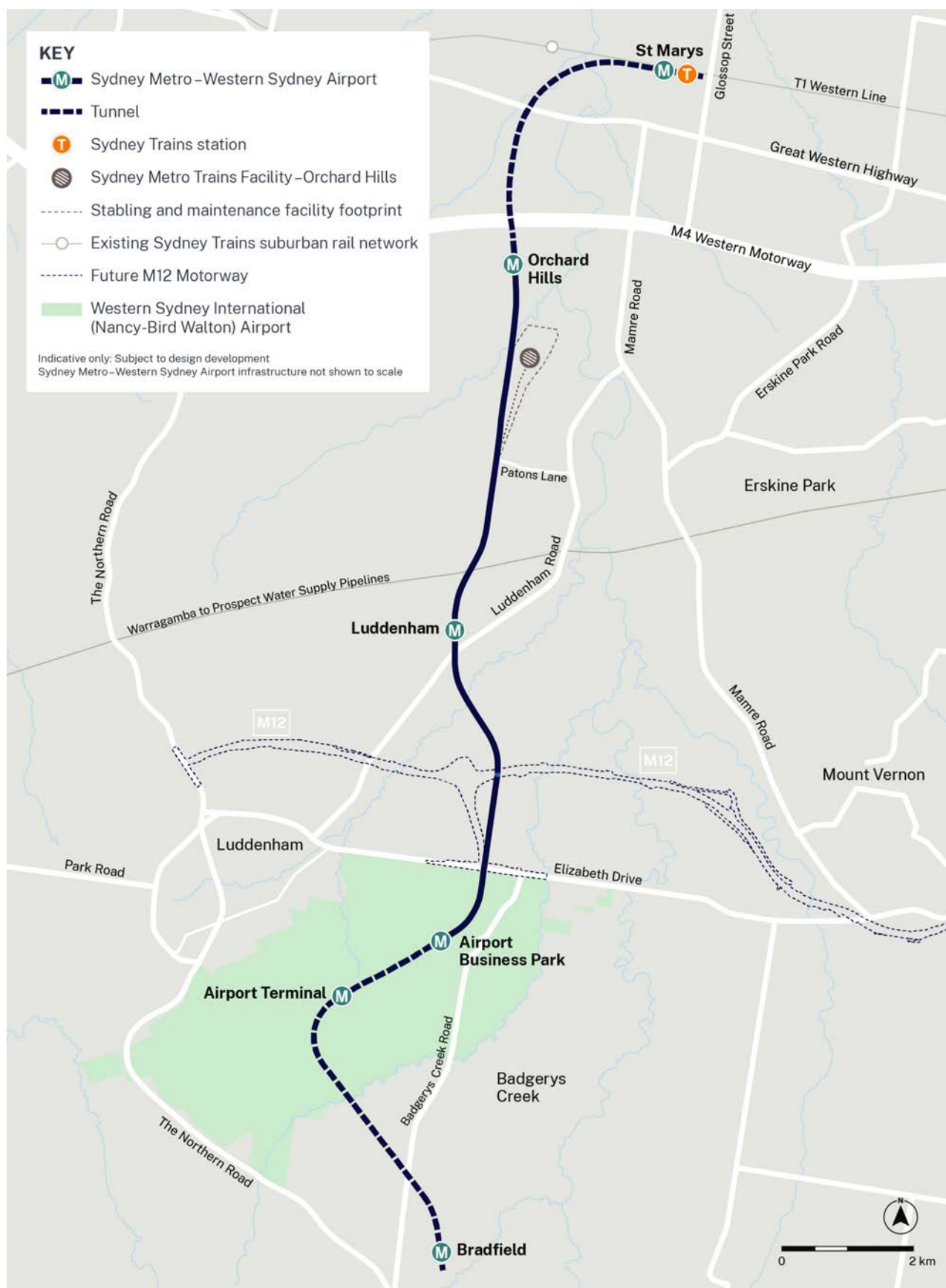
Hopping to it at the Easter Show

SM-WSA were on hand at the Sydney Metro stand at the Sydney Royal Easter Show this year.

Across the 12 days of the show, Sydney Metro engaged with more than 5700 showgoers – a 118% increase on the 2024 Easter Show. SM-WSA took part in almost 700 of those conversations during this highly successful engagement.

Sydney Metro staff were all ears at the Easter Show, listening to the fantastic feedback about metro services and projects across Sydney.





Contact us

If you have any questions or would like more information please contact our project team:

1800 717 703 Community infoline open 24 hours

sydneymetrowsa@transport.nsw.gov.au

Sydney Metro – Western Sydney Airport
PO Box K659, Haymarket NSW 1240



Translating and interpreting service

If you need help understanding this information, please contact the Translating and Interpreting Service on 131 450 and ask them to call us on 1800 717 703.



Access information in over 100 languages.

Download **Sydney Metro Connect** from the App store™ or get it on Google Play™.