

Mr Rob Sherry
Team Leader Compliance – Government Projects
Department of Planning, Housing and Infrastructure
Locked Bag 5022
PARRAMATTA NSW 2124

6 May 2025
Ref:201208-ER_DPHI-April 2025

Dear Rob

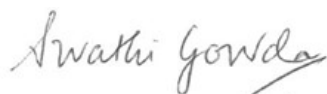
RE: Sydney Metro - Sydney Metro West SSI - ER Monthly Report for April 2025

Healthy Buildings International (HBI) submits this report to the Secretary in accordance with:

- Condition A30 (k) of the Sydney Metro West, Concept and Stage 1 SSI 10038 Approval (11 March 2021), and associated modifications (MOD 1 - 28 July 2021, MOD 2 - 3 June 2022, MOD3 – 4 July 2022, MOD 4 - 23 December 2022, MOD 5 – 20 September 2023 and MOD 6 – 6 November 2024); and
- Condition A32(k) of the Sydney Metro West – The Bays to Sydney CBD SSI 19238057 Approval (24 August 2022) and associated modifications (MOD 1 – April 2023, MOD 2 – October 2023, and MOD 3 – November 2024)

The attached summary details the key activities undertaken by Environmental Representatives for Sydney Metro – Sydney Metro West for the month of April 2025.

Yours sincerely



Swathi Gowda
Environmental Representative

Cc:

DPHI: Major Projects Portal

Sydney Metro: John Ieroklis, Andrew Hendy, Cath Snelgrove, Ari Stypel, Ryan Butler, Sarah Kemp, Syed Shah, Valerie Lebon, Sarah Lepre

Contractors: Jared Lipton (AFJV), Steph Mifsud (GLC), Sally Reynolds (JCG)

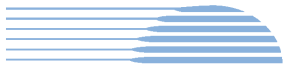


Table of Contents

1	Phase B - Central Tunnelling Package	4
1.1	Key Construction Activities During the Period	4
1.2	Key Construction Activities Look Ahead.....	5
1.3	ER Inspections	5
1.3.1	Photos	6
1.4	Endorsed Documents	7
1.5	Complaints	7
1.6	Compliance.....	7
1.6.1	Incidents.....	7
1.6.2	Non-compliance and Potential Non Compliance	7
1.6.3	Audits	7
1.7	Looking Forward – Core Focus Areas	7
2	Phase F – Western Tunnelling Package.....	8
2.1	Key Construction Activities During the Period	8
2.2	Construction Activities Look Ahead	9
2.3	ER Inspections	10
2.3.1	Photos	10
2.4	Endorsed Documents	13
2.5	Complaints	13
2.6	Compliance.....	13
2.6.1	Incidents.....	13
2.6.2	Non-compliance.....	14
2.6.3	Audits	14
2.7	Looking Forward – Core Focus Area	14
3	Phase G – Eastern Tunnel Package.....	15
3.1	Key Construction Related Activities During the Period	15
3.2	Key Construction Activities Look Ahead.....	16
3.3	ER Inspections	16
3.3.1	Photos	17
3.4	Endorsed document/s.....	18
3.5	Complaints	18
3.6	Compliance.....	19
3.6.1	Incidents.....	19
3.6.2	Non-compliance	19
3.6.3	Audits	19



3.7	Looking Forward – Core Focus Areas	19
4	Sydney Metro Retained Obligations and Other Activity	20
4.1	Key Construction Activities During the Period	20
4.2	Key Construction Activities Look Ahead.....	20
4.3	ER Inspections	20
4.3.1	Photos	20
4.4	Endorsed Document/s.....	20
4.5	Complaints	20
4.6	Compliance.....	20
4.6.1	Incidents.....	20
4.6.2	Non-compliance	20
4.6.3	Audits	20
5	Statement of Limitations.....	21
6	Appendix A – ER Document Endorsement Records (ETP only).....	22



1 PHASE B - CENTRAL TUNNELLING PACKAGE

The Environmental Representatives for Phase B of Sydney Metro West are:

- Michael Woolley
- Maulik Bapodara
- Swathi Gowda
- Jo Robertson

Phase B – Central Tunnelling Package (CTP) is being delivered by Acciona Ferrovia Joint Venture (AFJV). Phase B of Sydney Metro West has been further broken into:

- Phase B1: Civil works
- Phase B2: Tunnelling works

The AFJV hold EPL 21610 for this Phase of works. Activities defined as Phase B2-Tunneling Works in the Staging Report for Metro West commenced during the November 2022 reporting period at Burwood North.

1.1 Key Construction Activities During the Period

The Bays

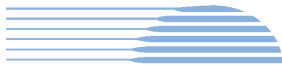
- Completion of contracted works. Some defects work after handover. Ongoing operation of the water treatment plant and management/maintenance of areas handed over.
- Completion of the construction of sub-grade and gravel base cover to infill the void left by the removal of the slab. Drainage for the area completed and in operation.
- Ongoing use of a pump to re-direct sewer around a sewer diversion installed to avoid the spoil shed. Reconnection to original sewer line to be completed during the next reporting period.

Five Dock

- West Shaft: Completion of concrete FRP works for the cavern lining. Use of a crane on the surface for deliveries to the shaft and surface. Concrete deliveries to the western site for the concrete works. Ongoing demobilisation site sheds.
- East Shaft: Ongoing and near complete deconstruction of the acoustic shed including the removal of frame sections and wall panels with a crane working from inside the shed.
- Installation of hoarding around the site as the shed is removed.
- Ongoing use of a house on Waterview Street adjacent the eastern shaft for project offices.
- Water directed to the Bays water treatment plant for treatment.

Burwood North

- Completion of contracted works. AFJV continue undertaking remedial works in the nozzles and headwalls in the eastern end of the station box as requested by Sydney Metro. Deliveries and unloading of items to the surface.
- Operation of the water treatment plant as required, with discharge direct to stormwater when operating.
- South Shaft: Use of site sheds for personnel.



North Strathfield

- Completion of contracted works.
- Pumping of water from the station box to Burwood North or the Bays for treatment and discharge.

Sydney Olympic Park

- Completion of contracted works for the surface, nozzles and station box.
- Laydown of materials at the surface for tunnellers who are still using the site to address defects in the tunnel.
- Tunnelling personnel using offices, workshop and laydown.
- Project Office being used by AFJV and Sydney Metro personnel.

AFJV continue to manage all sites - whether contracted works are complete or not.

1.2 Key Construction Activities Look Ahead

- Ongoing activities as described above including the ongoing removal of the acoustic shed at Five Dock. Planned completion of contracted works for the Five Dock site in May.
- Defect works ongoing across most sites.
- Ongoing remedial works at BN in the nozzles.
- Ongoing operation of the water treatment plants at BN and the Bays.
- Ongoing management/caretaking of sites where works are complete.

1.3 ER Inspections

There were two ER inspections conducted during the reporting period on Thursday 3 and 14th of April, noting reduced inspections due to Easter and Anzac Day holidays and reduced scope of works across many sites. The following actions were raised during the inspections:

- Ensure bins that are marked as spill kits across the site at BN contain spill response materials.
- Ensure the Telehandler at BN uses a low frequency alarm rather than tonal alarm
- Empty bund container holding oil/water waste at SOP workshop laydown to reduce risk of spills. Cover container in the interim.
- Ensure 20L containers at FD are moved to a location provided with secondary containment.

AFJV have been responsive in addressing actions raised during ER Inspections, with the above actions closed out.



1.3.1 Photos



Figure 1.1 Surface and drainage in the area of the former Spoil shed slab (The Bays).



Figure 1.2 Polymer placed on soil areas adjacent the harbour (The Bays).



Figure 1.3. Removal of the acoustic shed frame (Five Dock East).



Figure 1.4 Removal of the lining formwork; general activities in the western shaft (Five Dock).



Figure 1.5 Remedial works in the nozzles (Burwood North).



Figure 1.6 Limited surface activities (Burwood North).



Figure 1.7 Station Box (North Strathfield).



Figure 1.8 Station Box (SOP).

1.4 Endorsed Documents

No documents were required to be signed, approved or endorsed during the reporting period.

1.5 Complaints

Based on the monthly Sydney Metro Complaint Register issued for April 2025, there were 9 complaints reported for the month of which 5 complaints were determined by the project to be not related to the Sydney Metro works.

All of the four complaints deemed to be from the project were related to noise from the Five Dock site. Three were for OOHs noise and one for noise during standard hours work. The complaints coincide with the removal of the acoustic shed and ongoing OOHWs.

1.6 Compliance

1.6.1 Incidents

No Incidents as defined in the Infrastructure Approval were reported by AFJV during the reporting period.

1.6.2 Non-compliance and Potential Non Compliance

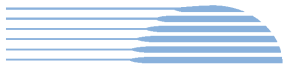
There were no Non-Compliance reports (NCRs) issued during the reporting period.

1.6.3 Audits

An Independent Environmental Audit (IEA) was conducted during February 2025 with compliance assessment and reporting occurring in March and April 2025.

1.7 Looking Forward – Core Focus Areas

- Demobilisation activities including completion of the acoustic shed and site shed removal at Five Dock.
- Management of sites where works are completed.



2 PHASE F – WESTERN TUNNELLING PACKAGE

The Environmental Representatives for Phase F of Sydney Metro West are:

- Swathi Gowda
- George Kollias
- Michael Woolley
- Maulik Bapodara
- Jo Robertson

Phase F – Western Tunnelling Package (WTP) is being delivered by Gamuda Australia Laing O’Rourke Consortium (GLC).

GLC are constructing this Phase of Sydney metro West under EPL 21676.

2.1 Key Construction Activities During the Period

During the reporting period, the following activities were being undertaken at the Sydney Olympic Park (SOP), Westmead, Parramatta and the Clyde stabling and maintenance facility which includes the Rosehill, Clyde Dive and Clyde MSF construction sites:

SOP

- Concrete defect rectification – in tunnels (access via Rosehill)
- Site demobilisation completed and handed over on 15 April 2025

Westmead

- Arch and wall cage installation within crossover cavern
- Arch and kicker pour within crossover cavern
- Station cavern invert excavation, blinding and waterproofing
- Spoil loadout (via crane and kibble at surface level)

Parramatta

- Eastern Station Box:
 - D-Wall rectification works ongoing
 - Blinding layer pour completed
 - TBM preparatory works ongoing
- Western Station Box: D-Wall repair works commenced
- Central Station Box Central: Strut and waler installation and spoil excavation
- Archaeology:
 - Zone 8a - Archaeological Investigation and clearance work; backfilling and levelling works completed
 - Zone 8b – Archaeological investigation and clearance work commenced and ongoing
- WTP is operating and discharging as necessary
- Other works:
 - Staged removal of container wall - piling completed and installation of steel structure scheduled mid-May 2025
 - Substation – electrical and commissioning works



Rosehill

- TBM1 and TBM 2 - on route towards Parramatta
- Cross passage excavation at XP78 and XP75 currently
- Water Treatment Plant operation including off-site discharge ongoing
- Spoil stockpiling within shed and spoil going off-site

Clyde Dive

- Lining Erection Machine (LEM) and supporting works ongoing (24 hours)
- Electric Tower Crane operational
- Caverns - water proofing, FRP (Form Reo Pour) and arch lining works, including concrete pours ongoing
- FRP for offices above dive structure ongoing
- HV Protection Slab - piling works completed and capping beam excavation commenced

Clyde MSF

- Stormwater installation across site
- Duck Creek water conveyance structure finishing works
- Flood relief culvert excavation
- Hot spot removal and excavation for future flood relief basin
- Service searching for future HV/LV realignment on surrounding streets
- Final retaining wall works including security fencing installation
- Sydney Water WM2 commissioned and handed over to Sydney Water
- Bio Basin construction by Ocean Protect – final wall constructed and bays installed
- Stockpiling and dewatering activities (as required)
- Bulk earth works and fill across MSF (East and West)
- Preparation for landscaping works

2.2 Construction Activities Look Ahead

The key construction activities planned are similar to those listed in Section 3.1, with the addition of the following:

- Various OOHW (conducted under EPL).
- Utility works along local roads in the vicinity of Clyde MSF to relocate High Voltage and Low Voltage (HV/LV) route
- Removal of acoustic sheds (TBC).

2.3 ER Inspections

Currently, the sites are divided into two groups and visited typically fortnightly for ER inspections. The two groups are:

- Parramatta, Westmead and SOP
- Clyde Dive, Clyde MSF and Rosehill

Four ER inspections were conducted during the reporting period (02/04/2025, 09/04/2025, 16/04/2025 and 30/04/2025); with opportunities for improvement (OFIs) identified and the following actions (summarised) raised during the month:

Clyde Dive and Rosehill

- Nil

Clyde MSF

- Area 6, Clyde MSF: Observed oily sheen, limited to a minor area within the excavation footprint of the flood relief basin in Area 6 (within known contamination hot spot area). Action raised for GLC to investigate oily sheen observed and confirm next steps to be taken based on investigation outcomes.
- Fleet St, Clyde: Some tracking of material observed, post wheel wash use on section of Fleet St. Maintenance action raised for removal of sediment/dirt build-up in section of gutter/low point and to undertake a review to ensure controls (including regular maintenance of wheel bath) are being implemented to address sediment source and if any additional controls are required, to prevent further potential tracking on public road.
- A' Becketts Creek, Clyde: Action raised for GLC to confirm and implement ERSED controls (end of day/prior to wet weather forecast) on section of embankment near the Creek being filled/shaped; with recommendation to increase bund height (in place), taking into consideration ERSED controls implemented on the embankment.

Parramatta, Westmead and SOP

- Nil

GLC continue to be responsive and provide close-out of actions raised.

2.3.1 Photos



Figure 2.1- Parramatta Site: D-Wall rectification works in Eastern Station Box.



Figure 2.2- Parramatta Site: Staged container wall removal and piling; with temporary container storage in Western Station Box.



Figure 2.3 – Parramatta Site: Archaeological investigation and clearance works commenced and continuing in Zone 8b.



Figure 2.4 – Parramatta Site - Sub-Station: GLC reports electrical work and installation of cable trays. ERSed controls in place.



Figure 2.5 – Westmead Site: Sprinklers operational along site internal haul road.



Figure 2.6 – Westmead Site: Concrete delivery observed within the acoustic shed.



Figure 2.7 – SOP Site: GLC site demobilised / handed over.



Figure 2.8 –SOP Station Box: GLC site demobilised / handed over.



Figure 2.9 – SOP Site: Polymer sprayed on previous site shed area. ERSED controls remain on batter.



Figure 2.10 - SOP Site: Sediment controls remain; with polymer sprayed on area adjacent to the Station Box.



Figure 2.11 – Clyde MSF Site: Water conveyance structure – deck slab poured and formwork continuing.



Figure 2.12 – Clyde MSF Site: Backfilling and levelling of previous MSF West shed area continuing.



Figure 2.13 –Clyde MSF Site: Flood Relief Bridge - Reo installation works underway.



Figure 2.14 – Rosehill Site: Spoil storage and truck loadout within shed.



Figure 2.15 – Clyde MSF Site: Sections 1 and 2 – Permanent perimeter fencing works.



Figure 2.16 – Clyde MSF Site: Section 6 – GLC reports piling works for ground improvement completed in area and backfilling progressing.

2.4 Endorsed Documents

The following documents were approved or endorsed by the ER during the reporting period:

- Nil

2.5 Complaints

Based on the Sydney Metro Complaint Register for April 2025, there were six complaints reported during the month, compared to five complaints in March 2025. Of the complaints reported during April, three complaints were deemed to be not related to SM activities, with remaining complaints summarised below:

Project wide (West – Tunnelling – GLC)

- One complaint relating to worker behaviour (truck driver)
- One complaint relating to property damage (complainant believes caused by tunnelling)

Parramatta

- One complaint relating to worker behaviour (within Roxy Arcade public carpark)

2.6 Compliance

2.6.1 Incidents

No incidents considered to represent Incidents as defined under the Project Approval were reported to or observed by the ER during the reporting period.

Class 3 incidents related to leaks/spill and Sydney Water Asset (potable water main failure) related incidents (two) reported under GLC/SM reporting system during the reporting period. In relation to the Sydney Water Asset failure resulting in potable water discharge into the construction site, it is understood that the Project has no ownership or control of the asset and no Project works were being undertaken in the area of the asset failure at the time of the events (further investigation and corrective actions are ongoing).



2.6.2 Non-compliance

Nil non-compliance reports provided to the ER during the reporting period.

2.6.3 Audits

Nil. IEA completed in March 2025, with Final IEA report received late April 2025 and under review by GLC/SM.

2.7 Looking Forward – Core Focus Area

The core focus areas for upcoming works are:

- Cross passage works in Parramatta.
- Installation of a new potable water main (in two areas) adjacent to the Clyde MSF site.
- Utility works along local roads in the vicinity of Clyde MSF to relocate High Voltage and Low Voltage (HV/LV) route.
- Removal of acoustic sheds (planning underway, removal timing TBC).



3 PHASE G – EASTERN TUNNEL PACKAGE

The Sydney Metro West Eastern Tunnel Package is Stage 2 of the Sydney Metro West CSSI and is described as major civil construction works between The Bays and Sydney CBD, including station excavation at Pyrmont and Hunter Street and tunnel excavation between the Bays and Hunter Street. Stage 2 (SSI 19238057) was approved on the 24 August 2022.

The Environmental Representatives for the Sydney Metro West Eastern Tunnel Package are:

- Michael Woolley
- Maulik Bapodara
- Swathi Gowda
- Jo Robertson

The Eastern Tunnelling Package (ETP) is being delivered by John Holland CPB Ghella Joint Venture (JCG) with the contract being awarded in November 2022. Sydney Metro notified DPHI that the date of commencement of construction was 17 March 2023. JCG have received Environmental Protection Licence (EPL 21784) for the project.

3.1 Key Construction Related Activities During the Period

Works conducted during the reporting period included:

Hunter Street East:

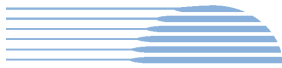
- Access through B-Class supports within the Bligh Street acoustic shed for tunnelling activities with all excavation and most spoil removal completed. Ongoing concrete deliveries and FRP activities. Construction of ground support. Use of air ventilation systems and other tunnelling support activities.
- Ongoing and near completion of the deconstruction of the acoustic shed.
- Use of the steel deck with access driveways to O'Connell Street and Hunter Street.
- Ongoing excavation and wall support under the Hunter Street footpath.
- Ongoing installation of the crib sheds over Richard Johnson Square.

Hunter Street West:

- Completion of initial piling works around the Skinners Hotel.
- Construction of a new temporary site access driveway adjacent Skinners Hotel.
- FRP works for a capping beam along the Hunter Street and George Street sides of the site.
- Management of water in rainy conditions.
- Ongoing deliveries and pedestrian management along Hunter Street after its closure outside the site.

Pyrmont East:

- Commencement of the excavation of nozzles in the eastern end of the shaft with a Road Header. Reduced excavation of the shaft by rock hammers.
- Ongoing excavation of the station and cross over caverns.
- Spoil load out by kibble and gantry crane in the permanent shaft and from the tunnelling activities in the temporary shaft within the acoustic shed.
- Ongoing use of the tunnel ventilation system including scrubber units located in the tunnel and a new scrubber set up at the base of the shaft for the nozzle excavation with ventilation mesh installed.
- Use of site amenities/sheds on the steel deck to the east of the acoustic shed and use of one lane on Union Street for storage of containers and a sub-station.
- Ongoing treatment of water generated from tunnelling activities and groundwater. Discharge of treated water to stormwater system.



Pymont West:

- Ongoing excavation of the shaft walls and wall support using multiple rock hammers, including the continued use of the larger 74T excavator.
- Ongoing use of the kibble for loading out spoil onto trucks. Trucks exiting to Pymont Street.
- Drainage of water to the tunnelling operations.

The Bays:

- Temporary cessation of TBM tunnelling until Pymont cavern excavation is ready for TBM arrival. Commencement of the excavation of the first cross passages (XP09 and XP12).
- Water treatment and discharge using the construction water treatment plant.
- Operation of the slurry treatment plant; spoil shed and related equipment during TBM tunnelling.
- Concreting works for the invert of tunnels.
- Receipt and storage of spoil from Hunter Street and Pymont sites and load out spoil.
- General support activities such as in the workshops, segment delivery and storage and use of site offices.
- Use of the truck marshalling area by trucks waiting to attend other project sites.

3.2 Key Construction Activities Look Ahead

The following works are planned to occur:

- Ongoing activities as described above.
- Commencement of the use of the site sheds at Richard Johnston Square.
- Ongoing excavation of the cavern (24/7) and permanent shafts at the Pymont sites. Load out of spoil.
- Pile pad construction for king piles at Hunter Street west.
- Ongoing excavation of cross passages in the tunnel from the Bays.

3.3 ER Inspections

Three ER inspections were conducted during the reporting period on Tuesday 1st, 15th and 29th April. The following actions were raised during the inspections:

- JCG to investigate the EWP alarm at Hunter Street East site and ensure low frequency alarms are in place for the movement alarm and not tonal.
- Ensure the haul road at the Bays is managed to be free of loose dirt to the extent that raised dust is not generated. Ensure all trucks use the wheel wash prior to leaving site.

There was an ongoing focus on tracking of dirt at all sites in the wet weather.

On 3rd April the ER also attended an OOHs Inspection at the Pymont and Hunter Street sites with Sydney Metro, the AA and a representative from DPHI compliance.

JCG were responsive to ER feedback during inspections and for the close out of actions raised.



3.3.1 Photos



Figure 3.1 Hunter Street East: Excavation under the footpath.



Figure 3.2 Hunter Street East: Ongoing removal of the shed.



Figure 3.3 Hunter St West: Construction of the capping beam along Hunter Street boundary.



Figure 3.4 Hunter Street West: New access concrete access with rumble grid and capping beam in background.



Figure 3.5 Pyrmont East: Nozzle excavation by road header with new scrubber unit operating.



Figure 3.6 Pyrmont East: Tunneling operations at the base of the shaft.



Figure 3.7 Pyrmont West: Excavation of the permanent shaft using multiple rock hammers.



Figure 3.8 Pyrmont West: Regular washing of the steel deck inside the shed was observed.



Figure 3.9 The Bays: Workshop adjacent the Segment Shed.

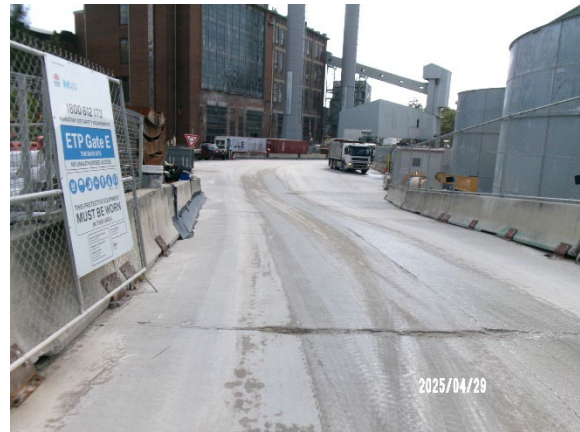


Figure 3.10 The Bays: Haul Road access to site.

3.4 Endorsed document/s

The following documents were signed, approved or endorsed during the reporting period.

- Nil.

In accordance with CoA A32(d)iii the written statements endorsing documents identified in A14, A21, C1, C5 and C14 are provided in Appendix A (if relevant).

3.5 Complaints

The monthly Sydney Metro complaint register for April 2025 indicated 15 complaints were reported to the Project that related to ETP activities. This compares to 26 complaints received in March 2025.

Seven complaints related to Pyrmont sites including for noise during standard hours (3); noise during Out of hours (2) and property damage (2). Five complaints related to the Hunter Street sites of which three were for noise during standard hours and 2 related to property damage. Two complaints related to cross passage works in the tunnel under Pyrmont conducted out of hours. One complaint related to TBM mainline tunnelling.



3.6 Compliance

3.6.1 Incidents

No incidents considered to represent an Incident as defined under the Project Approval were reported to the ER during the reporting period.

3.6.2 Non-compliance

No Non-Compliance reports were provided to the ER during the reporting period.

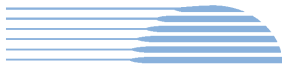
3.6.3 Audits

Compliance reporting for the Independent Environmental Audit that was commenced in February 2025 was ongoing in April.

3.7 Looking Forward – Core Focus Areas

In the next reporting period, the ER Team will be focused on:

- General monitoring of construction activities
- Noise associated with excavation of the Pyrmont West and Hunter Street shafts; OOHs tunnelling at Pyrmont; and OOHs spoil haulage and deliveries at Pyrmont East.
- Potential for tracking of dirt at the Pyrmont East and Hunter Street sites.



4 SYDNEY METRO RETAINED OBLIGATIONS AND OTHER ACTIVITY

The Environmental Representatives for the Sydney Metro Retained Obligations and other Activities are:

- Swathi Gowda
- Jo Robertson

The Sydney Metro Retained Obligations and other Activities is being delivered by Sydney Metro with various sub-contractors delivering the works. These works do not require an EPL.

4.1 Key Construction Activities During the Period

The ER is not aware of other Sydney Metro managed construction activities during the period.

4.2 Key Construction Activities Look Ahead

The ER is not aware of other Sydney Metro managed construction activities.

4.3 ER Inspections

No ER Inspections during the reporting period.

4.3.1 Photos

Not applicable as there were no inspections.

4.4 Endorsed Document/s

Minor Ancillary Facilities Memo in preparation for Transitional Services (Phase I) for the extension of the existing use of the former residential building (house) at 21 Waterview Street by Sydney Metro once handed over by AFJV.

4.5 Complaints

No complaints have been reported to the ER during the reporting period.

4.6 Compliance

4.6.1 Incidents

No incidents have been reported to the ER during the reporting period.

4.6.2 Non-compliance

No non compliances have been reported to the ER during the reporting period.

4.6.3 Audits

Independent Audit status for WTP, CTP and ETP are as reported in other sections of this Monthly Report.



5 STATEMENT OF LIMITATIONS

Healthy Buildings International (HBI) has prepared this report in accordance with the requirements of Condition A30(k) of the Sydney Metro West, Concept and Stage 1 SSI 10038 Approval (11 March 2021), and Condition A32(k) of the Sydney Metro West – The Bays to Sydney CBD SSI 19238057 Approval (24 August 2022).

The report is for the sole purposes of Department of Planning, Housing and Infrastructure (DPHI) and Sydney Metro. It has been prepared based on generally accepted practices and standards at the time it was prepared. No other warranty, expressed or implied, is made as to the professional advice included in this Report. This report did not assess any aspects relating to safety.

Where the Report indicates that information has been provided to HBI by third parties, HBI assumes no liability for any inaccuracies in or omissions to that information.

This Report was prepared based on the conditions encountered and information reviewed at this time. HBI disclaims responsibility for any changes that may have occurred after this time.

This Report should be read in full. No responsibility is accepted for use of any part of this report in any other context or for any other purpose or by third parties. This Report does not purport to give legal advice. Legal advice can only be given by qualified legal practitioners.

Except as required by law, no third party may use or rely on this Report unless otherwise agreed by HBI in writing. Except as specifically stated in this section, HBI does not authorise the use or findings of this Report by any third party.

To the extent permitted by law, HBI expressly disclaims and excludes liability for any loss, damage, cost or expenses suffered by any third party relating to or resulting from the use of, or reliance on, any information contained in this Report. HBI does not admit that any action, liability or claim may exist or be available to any third party.



HBI Healthy Buildings International Pty Ltd

6 APPENDIX A – ER DOCUMENT ENDORSEMENT RECORDS (ETP ONLY)

Nil