

[REDACTED]

Senior Compliance Officer – Government Projects  
Department of Planning, Housing and Infrastructure  
Locked Bag 5022  
PARRAMATTA NSW 2124

6 June 2025

Ref:201209-ER\_DPHI-May 2025

Dear [REDACTED]

**RE: Sydney Metro - Sydney Metro Western Sydney Airport SSI 10051 – ER Monthly Report for May 2025**

Healthy Buildings International (HBI) submits this report to the Secretary in accordance with:

- Condition A32 (k) of the Sydney Metro Western Sydney Airport, SSI 10051 Approval (23 July 2021, and as modified 14 April 2022)

The attached summary details the key activities undertaken by Environmental Representatives for Sydney Metro Western Sydney Airport for May 2025.

Yours sincerely

[REDACTED]

Environmental Representative

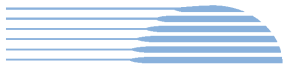
Cc:

Sydney Metro: [REDACTED]

[REDACTED]  
DPHI: Major Projects Portal

Enclosed:

SSTOM Groundwater Monitoring Round Schedule Review



## **Table of Contents**

<b>1. Advanced and Enabling Works (AEW) .....</b>	<b>3</b>
<b>2. Stations, Systems, Trains, Operations and Maintenance Package (SSTOM) .....</b>	<b>7</b>
<b>3. Statement of Limitations .....</b>	<b>17</b>

## 1. Advanced and Enabling Works (AEW)

Contract Package	Environmental Representative/s
Advanced and Enabling Works (AEW)	
EPL: None	
<b>Key Construction Activities During the Period</b>	
<ul style="list-style-type: none"> <li>▪ <b>St Marys Footbridge (FSM):</b> <ul style="list-style-type: none"> <li>○ Deflection wall construction continues</li> <li>○ Beams have been lifted into place between the compound and platform 1/2</li> <li>○ The wall and kerb and gutter are being finalised on the road behind the Harris St carpark</li> <li>○ Headstocks are continuing to be constructed on both platforms</li> </ul> </li> </ul>	
<b>Key Construction Activities Look Ahead</b>	
<p>Construction activities planned for the upcoming period for the Advanced Enabling Works (AEW) comprise of:</p> <ul style="list-style-type: none"> <li>▪ <b>St Marys Footbridge:</b> <ul style="list-style-type: none"> <li>○ Deflection wall construction continuation</li> <li>○ Beams will be continued to be lifted into place on the overpass</li> <li>○ Concrete pours will continue on both platforms</li> <li>○ Concrete pours will commence on the deck of the overpass</li> <li>○ Excavation will continue on the road behind the Harris St car park</li> </ul> </li> </ul>	
<b>ER Inspections</b>	
<p>There were two (2) inspections of the St Marys Station Footbridge works conducted on 14/05/25 and 28/05/25 by the ER (AG).</p> <p>Key points/issues raised during the inspections were as follows:</p> <ul style="list-style-type: none"> <li>▪ The site performed well during the rainfall events in May 2025</li> <li>▪ Housekeeping regarding cleaning mud on asphalt, and in gutters in the site compound is ongoing</li> <li>▪ ERSER controls observed across the site were of a good standard, however some maintenance was required on some controls</li> <li>▪ Minor levels of mud tracking was observed on Harris St.</li> <li>▪ ER requested inspections be completed by the contractor prior to weekend possession works to ensure controls are satisfactory</li> </ul>	

## Photos

### St Marys Footbridge



**Compound:** The deflection wall continues to be constructed without issue.



**Compound:** Beams were lifted to the laydown area ahead of being lifted into place on WE48.



**Commuter Carpark:** The exit point from the works adjacent to the Harris St carpark required stabilisation. It was noted that vehicles didn't exit at this point.



**Commuter Carpark:** Coir logs were placed against the barriers. Requested controls be tidied and / or relocated to manage the ERSED risk.



**Harris Street:** Minor mud tracking was observed at the compound exit point.



**MAF1:** Mud was observed on the exit from AEC1.





**MAF1:** Additional ballast has been added to the entry / exit point.



**Station overpass:** Works over the platforms are enclosed in hoarding.



**Platform 1/2:** Beams have been lifted into place from the compound to platform 1/2.



**Platform 1/2:** The deck has been prepared for concrete pours over the coming weeks.

#### Endorsed Document/s

The following documents were endorsed/approved by the ER:

- None

The following documents were provided for information or reviewed with comments provided to Sydney Metro:

- Out of Hours Works form – WE44 (Rev 2)
- Out of Hours Works form – WE45, 46 & 47 (Rev 1)
- Out of Hours Works form – WE48 (Rev 0)
- Out of Hours Works form – WE48 (Rev 1)
- Out of Hours Works form – MW47 & 48 (Rev 0)
- Out of Hours Works form – MW47 & 48 (Rev 1)
- Out of Hours Works form – MW49 & 50 (Rev 0)
- Out of Hours Works form – WE 49, 50 & 52 (Rev 0)

### Complaints / Incidents / Non-compliance

No non-compliances were reported to the ER during the period

One incident was reported to the ER during the period. The incident involved a fuel spill from a jerry can in a ute's tray. The jerry can was closed, however the heat caused fuel to leak from the breather valve. The spill was cleaned up using the onsite spill kit. The incident has been closed by SM.

No complaints were reported to the ER during the period.

### Audits (specific to packages reported in this report)

- None

### Looking Forward – Core Focus Areas

Despite the project performing well during the wet weather events of May 2025, the ER has put a focus on mud tracking and cleanliness of the hardstand areas within the site compound. Issues have been raised during the ER inspections with regard to these two aspects. The ER is expecting a proactive approach from the contractor to manage these issues and not relying on a general cleanup at the end of each day.

The contractor is undertaking out of hours works for safety, construction quality and possession reasons. The monitoring results during May 2025 were below the predicted levels in the DNVIS, additionally the project has not received any complaints during May 2025. The ER, however, considers the out of hours works a risk and will continue to take an active role in the planning and undertaking of these works.

ER Closing Comments:

Over the coming month the ER will continue to conduct inspections and request evidence from the contractor regarding key management measures. Main issues include:

- Mud tracking`
- Out of hours noise
- Water management
- Concrete management
- Interaction with members of the community

## 2. Stations, Systems, Trains, Operations and Maintenance Package (SSTOM)

Contract Package	Environmental Representative/s
Stations, Systems, Trains, Operations and Maintenance Package (SSTOM). Contractor Parklife Metro (PLM)	
EPL: 21807	
Key Construction Activities During the Period	
<p><b>Stations</b></p> <ul style="list-style-type: none"> <li>▪ St Mary's Station (STM): <ul style="list-style-type: none"> <li>○ Station box wall and suspended slabs FRP ongoing</li> <li>○ Pre-cast beam and plank installation is ongoing</li> <li>○ Hydro-demo of concrete defects ongoing</li> <li>○ Corbel construction tie-in works to FSM are ongoing</li> </ul> </li> <li>▪ Orchard Hills Station (OHE): <ul style="list-style-type: none"> <li>○ Station box FRP ongoing</li> <li>○ Concrete batch plant operations are ongoing</li> <li>○ Delivery of construction materials to the laydown areas (particularly at OHE North)</li> <li>○ Flash butt welding works ongoing</li> <li>○ Kent Road internal upgrade works are ongoing</li> <li>○ Tunnel fit-out cable tray (MEP) works are ongoing</li> <li>○ Beam/plank installation works are ongoing</li> <li>○ Rail pulling into dive ongoing during standard hours. OOH rail pulling into the up tunnel to STM commenced from 22/05 and completed on 29/05</li> </ul> </li> <li>▪ Luddenham Station (LUD): <ul style="list-style-type: none"> <li>○ Detailed excavation and concrete works continued</li> <li>○ FRP above-ground works continued</li> <li>○ In-ground electrical conduit installation is ongoing</li> <li>○ Site-won stockpiling is ongoing</li> <li>○ OSOM Steel deliveries ongoing – OOH work noted as NML compliant</li> <li>○ Haul road extended on northern boundary</li> </ul> </li> <li>▪ Bradfield Station (BRD) (Formerly Aerotropolis Core AEC): <ul style="list-style-type: none"> <li>○ Station box FRP ongoing</li> <li>○ Interface management is ongoing with WPCA Contractor - WEM</li> <li>○ Beam lifts and plank installation are ongoing</li> <li>○ Construction of permanent car park continued</li> <li>○ Relocation of site offices continued</li> <li>○ Construction of new water basin completed, tie-in works to be completed before decommissioning the existing basin (delayed due to rain events)</li> </ul> </li> </ul> <p><b>Linewide</b></p> <ul style="list-style-type: none"> <li>▪ Stabling and Maintenance Facility (SMF): <ul style="list-style-type: none"> <li>○ Earthworks scope is ongoing for the surface area of the SMF for construction</li> </ul> </li> </ul>	

- Sub-station construction is ongoing. Transformer installation works are ongoing
- Substation joint bay works/service installation on Patons Lane is ongoing
- Delivery of materials is ongoing
- Permanent drainage works are ongoing, and the construction of the permanent basin is ongoing.
- Combined service route (CSR) works ongoing
- Construction of the Maintenance and Administration (M&A) and Operations Control Centre (OCC) buildings is ongoing (structural steel and roof installation commenced)
- Topsoil amelioration works ongoing
- Claremont Meadows Services Facility (CMSF):
  - Site set-up work is mostly complete
  - Ventilation systems are commissioned and operating. Noise levels are below predicted levels.
  - Tunnel fit-out works ongoing
- Bringelly Services Facility (BSF):
  - Site establishment completed
  - Rear laydown complete. Topsoil stockpiles to have additional winter grass added.
  - Ventilation systems are commissioned, and operation has partially commenced (two fans on). Noise levels are below predicted levels. Noise verification monitoring is ongoing.
  - Base slab in shaft complete. Rail crew to enter tunnels 22/05 to start track installation.
  - Nest box monitoring completed, with Ecologist booked in to carry out nest box replacement as per the recommendations of the report.
- Lansdowne Rd to Patons Lane:
  - Site establishment works ongoing – minor facilities to be installed
  - Flash butt welding pad extension completed
  - ULX piling works are ongoing
  - CSR work is ongoing
  - Sewage service installation work ongoing
  - GST installation ongoing
  - Crane pad construction ongoing
  - Track slab concrete works ongoing for standard hours and OOH (EPL Community Agreement OOH works approved and commenced on 20/05)
- Luddenham Road to M12:
  - Bulk civil works up near M12 to support lay down activities complete
  - CSR works ongoing
  - Sleeper installation commenced for at-grade sections ongoing
  - Track slab defect rectification works ongoing
  - Rail pulling and installation works ongoing
  - M12 bridge waterproofing works completed
  - Warragamba viaduct defect works ongoing (via SCAW contractors)
  - OOH work commenced
- Portion 4 (M12 to Elisabeth Drive):
  - Rail welding ongoing
  - GST works ongoing



- CSR work on hold for a few weeks from rail site possession
- Tree surveys for CSR trenching ongoing
- Rail sleeper installation is ongoing

**Project wide**

- Weed spraying is ongoing across the alignment

**Key Construction Activities Look Ahead**

**Stations**

- St Mary's Station (STM):
  - Station box wall FRP to continue
  - Precast beam installation ongoing
  - Tunnel fit out works to commence
  - Corbel works ongoing
- Orchard Hills Station (OHE):
  - Station box wall FRP to continue
  - Delivery of construction materials to laydown area (particularly at OHE North)
  - Batch plant operations are ongoing and OOH
  - Tunnel fit out works
  - Precast beam and plank installation works
- Luddenham Station (LUD):
  - Station footprint excavation is ongoing
  - FRP / Concrete ongoing
  - Site-won stockpiling ongoing
  - Low-impact steel fixing evening works (NML compliant OOH works)
  - In-ground electrical conduit installation LV/HV ongoing
- Bradfield Station (BRD) (previously Aerotropolis Core - AEC):
  - FRP wall pours ongoing
  - Precast beam and plank deliveries ongoing
  - Permanent batter installation on eastern boundary ongoing
  - Installation of permanent stormwater drainage
  - Linewide integration
  - Relocation of the site offices ongoing

**Linewide**

- Stabling and Maintenance Facility (SMF):
  - Permanent drainage works ongoing
  - Permanent stockpile (PS-102) relocation works ongoing
  - Construction of permanent detention basin ongoing
  - Substation, M&A and OCC buildings FRP works ongoing
  - CSR works
  - Patons Lane bulk power supply works
  - Topsoil amelioration works

- Claremont Meadows Services Facility (CMSF):
  - Delivery of materials and tunnel fit out works
- Bringelly Services Facility (BSF):
  - Ventilation system commissioning
  - Delivery of materials and tunnel fit out works
  - Concrete deliveries and pumping
- Lansdowne Rd to Patons Lane:
  - Site set-up works to be complete
  - Sewage service installation works
  - ULX piling works
  - GST installation works
  - Completion of crane pad construction and installation of crane
  - Track slab concrete works
- Luddenham Road to M12:
  - Concreting/FRP works
  - Rail dragging and installation
  - Track slab defect works
  - Bridge defect rectification works
- M12 to Elisabeth Drive:
  - GST installation is ongoing
  - Flash butt welding
  - CSR works
  - Rail sleeper installation

#### ER Inspections

Four ER inspections were conducted during this period, with the Linewide portions inspected on 06 and 20 May 2025 and the Stations inspected on 13 and 27 May 2025. . Key points/issues raised during the inspections were as follows:

- STM – Minor housekeeping (rubbish removal) required under crib sheds.
- ORH – Repair the shotcrete internal embankment from vehicle damage. The wheel wash installation was delayed (ER raised as an opportunity for improvement in the timeliness of installing sediment tracking measures). ERSER and weed maintenance were noted as ongoing improvements across the site.
- LUD – Minor ESC maintenance to reinstate a sediment fence post rain event.
- BRD – Removal of the topsoil was mostly completed, ESC were maintained around the perimeter of the site. The new basin connection to surface drainage had been delayed due to rain events.
- SMF – Construction of the permanent basin commenced before the rain event. The installation of ERSER controls in the stockpile area had been completed. No evidence of off-site sediment flow post-rainfall was observed.
- Linewide – Weed maintenance ongoing. Noticeable decrease in weeds along alignment.
- Linewide – Claremont services shaft –PLM to consider improvements to speed up draining water from laydown areas to permit faster drying of the site and minimise risks of sediment tracking.

- Linewide Bringelly – vegetation growth on topsoil stockpiles appeared healthy, flock blocks had been added to drainage of laydown area resulting in a noticeable sediment drop out at controls.

A significant rain event occurred ~22/23 May with 84mm at Badgerys Creek and 124mm at Penrith BOM observations. The ER notes that discussions prior to the event included maintenance of ESC and discussions on managing water, notably at the SMF, where work to increase storage with the permanent basin was fast-tracked. PLM reported that overtopping of basins had occurred to the ER on 26 May. The ER noted that the site dewatering works were ongoing during the inspection on 27 May, and work areas remained open with minimal tracking observed.

#### Photos

#### Stations



**STM** – Station St egress – street sweeper was noted to be operating on hard stands. Minor tracking was noted to be coming in from the roadway at the entrance.



**STM** – Concrete testing into washout bins.

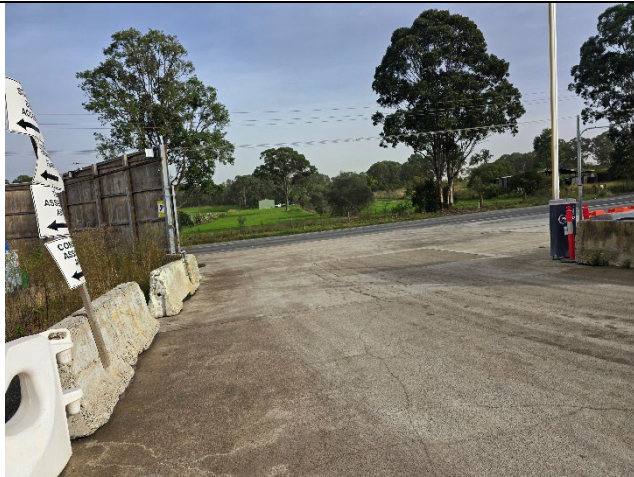


**OHE** – Batter shotcrete was repaired.



**OHE** – Minor erosion of the Kent Road extension had occurred.

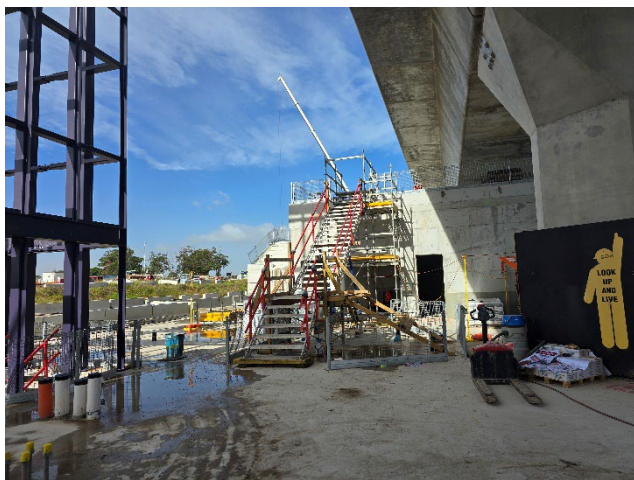




**OHE** – Egress from the site was maintained and street sweepers were operating on hard stands.



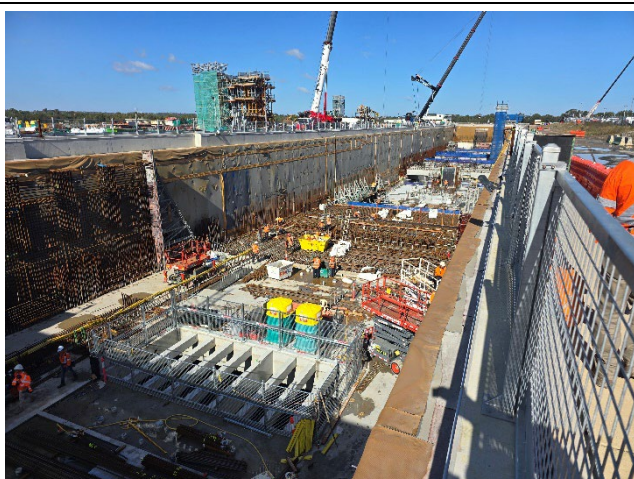
**OHE** – A water hose had been placed on the sediment fence. PLM immediately arranged for this to be removed and discussed options for better ESC measures to permit pumping activities for water carts.



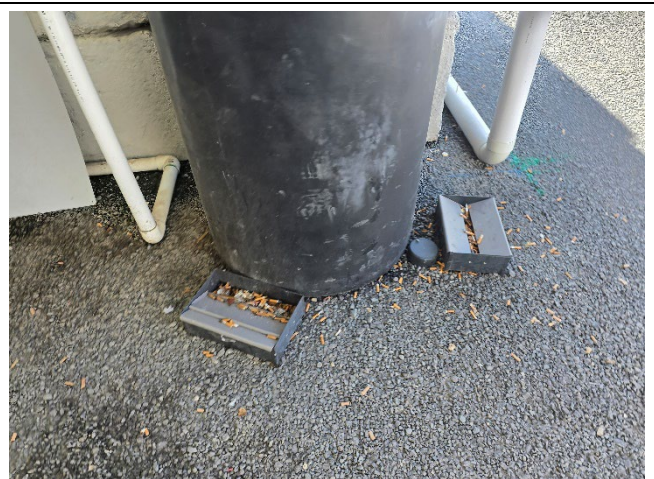
**LUD** – Lift frame installation (left) and station utility fitout.



**LUD** – Sediment fences had been maintained.



**BRD** – Station box showing beam installation and FRP.



**BRD** – Noted that while smoking trays were present PLM continued to pickup butts from workers (more prevalent at BRD site).





**BRD** – Site office relocation continued.



**BRD** – New basin to be connected to surface water drainage.

### Linewide



**CMSF** – Spill kits to have litter removed and restocked.



**CMSF** – Sump installed adjacent to shaft pad.



**Lansdowne Rd to Patons Ln** – TPZ noted to require reinstatement post rain event (actioned during inspection).



**Lansdowne Rd to Patons Lane** – Weed spraying continued.





**SMF – Building structural steel installation commenced.**



**SMF – Water basin construction commenced.**



**Patons Ln to water pipeline – Rumble grids installed.**



**Patons Ln to water pipeline – Flashbutt welding of rail segments.**



**Luddenham to M12 – Littering at site entrance (cleaned by PLM).**



**Luddenham to M12 – View north from M12 bridge.**





**M12 to Elizabeth Dr** – Weed maintenance was ongoing.



**M12 to Elizabeth Dr** – Jerry cans noted to be on bunds (good practice).



**BSF** – Flock blocks dropping out sediment in laydown controls.



**BSF** – Commissioning of ventilation commenced.



**BSF** – Minor sediment tracking noted – Street sweeper was operating during inspection.



**BSF** – vegetation cover on topsoil batter.

Endorsed Document/s
<p>The following documents were endorsed/approved by the ER:</p> <ul style="list-style-type: none"> <li>Request to Shift GW Monitoring Period (realignment of monitoring period to complete replacement well installation and end-of-year lab closure period)</li> </ul> <p>The following documents were provided for information or reviewed with comments provided to Sydney Metro:</p> <ul style="list-style-type: none"> <li>Surface Water Quality Monitoring Program</li> <li>Noise and Vibration Construction Monitoring Report Aug-24 to Jan-25- Rev 01</li> <li>Groundwater Construction Monitoring Report - Sep-24 to Nov-24 - Rev 01</li> <li>Waste Classification Report for ACM Stockpiles STM-TOP1 and SP05 - Rev A</li> <li>Parklife Metro Nest Box Monitoring – Feb-25 - Rev 00</li> </ul>
Complaints / Incidents / Non-compliance
<p>There were no non-compliances with the Approval reported to the ER during this period:</p> <p>One minor oil spill incident was reported to the ER during this period.</p> <p>There were four project complaints, and one non-project complaint reported to the ER during the period, concerning:</p> <ul style="list-style-type: none"> <li>St Marys Station <ul style="list-style-type: none"> <li>One complaint about OOH work and notification</li> </ul> </li> <li>Orchard Hills Station <ul style="list-style-type: none"> <li>Two complaints regarding OOH noise (one under investigation)</li> <li>One general construction complaint for OOH noise, dust on solar panels and water on the road</li> <li>One complaint of human impact from vibration activities</li> </ul> </li> </ul>
Audits (specific to packages reported in this report)
<p>Nil</p>
Looking Forward – Core Focus Areas
<p>The focus continues to be the review and implementation of the CEMP and sub plans, with a focus on site setup of Linewide areas, erosion, training requirements, ESC and traffic/parking with the increase of site workers.</p> <p><b>ER Closing Comments:</b> The project continued to perform well over the month, with PLM taking note of lessons learnt earlier this year. The ER has recommended the use of PLM’s Site Hives as a tool to continue to effectively monitor noise and dust, especially during OOH work.</p> <p>Key environmental issues raised with PLM include:</p> <ul style="list-style-type: none"> <li>Final design completion and water management</li> <li>Erosion and Sediment Control and plan updates</li> <li>Noise from new activities and OOH works</li> <li>Weed management</li> <li>Stockpile tracking and management</li> <li>Proactive dust and noise management</li> </ul>



### **3. Statement of Limitations**

Healthy Buildings International (HBI) has prepared this report in accordance with the requirements of Condition A32 (k) of the Sydney Metro Western Sydney Airport, Concept and Stage 1 SSI 10051 Approval (23 July 2021). The report is for the sole purposes of the Department of Planning, Housing and Infrastructure (DPHI) and Sydney Metro. It has been prepared based on generally accepted practices and standards at the time it was prepared. No other warranty, expressed or implied, is made as to the professional advice included in this Report. This report did not assess any aspects relating to safety.

Where the Report indicates that information has been provided to HBI by third parties, HBI assumes no liability for any inaccuracies in or omissions to that information.

This Report was prepared based on the conditions encountered and information reviewed at this time. HBI disclaims responsibility for any changes that may have occurred after this time.

This Report should be read in full. No responsibility is accepted for use of any part of this report in any other context or for any other purpose or by third parties. This Report does not purport to give legal advice. Legal advice can only be given by qualified legal practitioners.

Except as required by law, no third party may use or rely on this Report unless otherwise agreed by HBI in writing. Except as specifically stated in this section, HBI does not authorise the use or findings of this Report by any third party.

To the extent permitted by law, HBI expressly disclaims and excludes liability for any loss, damage, cost or expenses suffered by any third party relating to or resulting from the use of, or reliance on, any information contained in this Report. HBI does not admit that any action, liability or claim may exist or be available to any third party.

**Date: 20 May 2025**

**Subject SSTOM - Groundwater Monitoring Program - SMWSASSM-PLD-1NL-PC-PLN-000022 – Monitoring Round Scheduling Review for Environmental Representative Approval**

This review discusses a proposed adjustment to the timing of the next monitoring round now due under the Groundwater Monitoring Program (GWMonProg). Following discussion with the Environmental Representative (ER), this document has been prepared for ER review and approval under CoA A32(j) and C21 of SSI-10051 Sydney Metro - Western Sydney Airport.

## **Background**

The technical content and details included in the SSTOM GWMonProg were adopted from the Groundwater Monitoring Program (SMWSASBT-CPG-SWD-SW000-GE-RPT-040404-Rev 4 dated 12/08/2024) prepared by CPB Contractors Ghella Joint Venture (CPBG). Groundwater monitoring responsibilities have been being progressively transferred to Parklife Metro D&C (PLM) from CPBG, and this handover is now complete.

Currently PLM have completed and reported on two monitoring rounds:

- Biannual Groundwater Construction Monitoring Report – December 2023 to August 2024 Rev02 - SMWSASSM-PLD-SWD-SW000-WA-RPT-000003
- Biannual Groundwater Construction Monitoring Report – September 2024 to November 2024 - SMWSASSM-PLD-SWD-SW000-WA-RPT-000004

## **Existing Groundwater Monitoring Schedule**

The intent of the GWMonProg is for monitoring to be carried out every 6 months. Due to technical and administrative difficulties, encountered during the handover period with CPBG, neither PLM monitoring rounds have covered a six-monthly monitoring period. The next monitoring round is currently due to be completed in May 2025 (six-months from the previous report).

PLM have yet to complete the recommendations made as part of the September 2024 – November 2024 report, which includes the replacement and/or redevelopment of a number of monitoring well locations.

## **Proposed Groundwater Monitoring Schedule**

An adjustment to the timing for the next round of groundwater monitoring is requested to allow the next sampling round to be carried out in **July 2025**. The extension to the monitoring period would have the following benefits:

- Well replacement works will be completed which will allow sampling across the complete monitoring network, as recommended.
- There will be no impact on collection of data in wells where dataloggers are in operation as these will continue to collect data across the extended period.
- Monitoring in July ensures the next 6-monthly monitoring falls in February. This avoids future monitoring coinciding with the December/January period when laboratory resources for sample analysis and consultant availability for report preparation can become problematic. A July to February monitoring period is considered a sensible ongoing monitoring and reporting period

## Review and Recommendations

This scheduling review is considered a minor amendment to the GWMonProg as:

- There are no impacts from the extension of the monitoring period on nearby sensitive land users as the minor change is administrative only. In addition, the installation of replacement well will be undertaken within the approved Project boundaries and have no further impact on any land users.
- This request for an extension to the monitoring round sampling will not trigger an update of the GWMP as there will be no change to the frequency of the monitoring reporting period and sampling frequency will remain six-monthly after this adjustment.
- The extension is consistent with the terms of the Approval, specifically Condition A32(j) and C21 which allow the ER to approve minor amendments to the Construction Monitoring Programs.

## Environmental Representative Endorsement / Approval

<b>Name</b>	[REDACTED]		
<b>Signature</b>	[REDACTED]	<b>Date</b>	21 May 2025
<b>Comments</b>	It is noted that the minor amendment to realign the monitoring periods to minimise the laboratory shutdown periods and replace wells will not impact the collection of GW data.		
	Monitoring will continue after this one-time realignment on a 6-monthly frequency.		