



Excavation of the new Hunter Street station cavern is now complete, as the new metro station takes shape.

Hunter Street tunnel excavation complete

The NSW Government is delivering Sydney Metro West – a new underground metro railway which will double rail capacity between Parramatta and the Sydney CBD, transforming Sydney for generations to come.

This once-in-a-century infrastructure investment will provide fast, reliable turn-up-and-go metro services with fully accessible stations, link new communities to rail services and support employment growth and housing supply.

Stations have been confirmed at Westmead, Parramatta, Sydney Olympic Park, North Strathfield, Burwood North, Five Dock, The Bays, Pyrmont and Hunter Street in the Sydney CBD. Sydney Metro West will target an opening date of 2032.

John Holland CPB Contractors Ghella Joint Venture (JCG) has been awarded the contract to deliver 3.5 kilometres of twin metro rail tunnels between The Bays and Hunter

Street and excavate the Pyrmont and Hunter Street metro stations. This work is part of the Eastern Tunnelling Package (ETP) for Sydney Metro West.

Hunter Street construction activities

In a major milestone for ETP, underground excavation of the Hunter Street tunnels is complete. The focus is now on the concrete lining of the cavern and turnback tunnels, to ensure it's watertight and has the permanent support required to meet the tunnels' design life.

Shaft excavation and site establishment activities are continuing at both the Hunter Street East and West sites. Demolition of the existing site facilities and acoustic shed is nearly complete at the East site, while preparations are underway for the installation of the steel platform (top of shaft) at Hunter Street West, in the coming months.

Construction update

Underground activities

Excavation of the station cavern and turnback tunnels is now complete and all roadheaders have been taken off site. After 20 months of roadheader excavation, more than 240,000 tonnes of material (spoil) was removed to create the giant 180-metre-long cavern and over 265,000 tonnes excavated from the turnback tunnels. Spoil from these sites will be reused across other construction sites in NSW.



Three roadheaders excavated around the clock, at times working just 1.8 metres from where the M1 Metro City Line runs and directly below iconic landmarks including the heritage-listed State Library of New South Wales and The Domain.

In the cavern and turnback tunnels, the focus now shifts to the permanent concrete lining works, with the installation of waterproof membrane, steel reinforcement and concrete pours progressing well. About 50,129 square metres of lining and over 12,000 tonnes of steel reinforcement will be installed as part of this process, and 45,910 cubic metres of concrete will be poured.



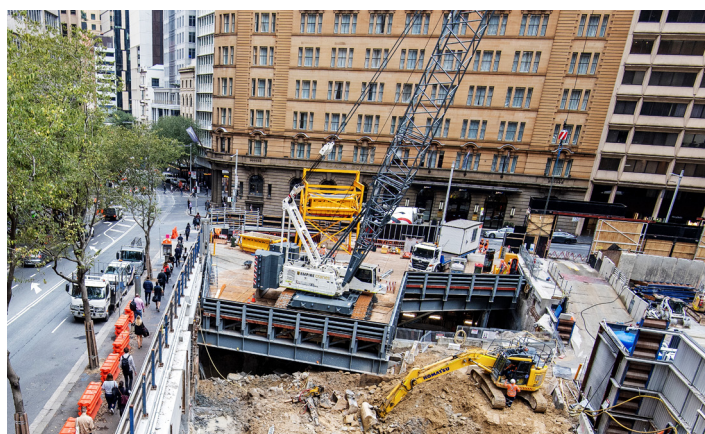
An impressive 2,300m³ of concrete was poured continuously across 49 hours in the station cavern, to construct the first three sections of the invert (cavern floor).



More than 3,610 square metres of lining has been installed in the turnback tunnels and station cavern so far.

Above-ground excavation

Shaft excavation is now underway at both sites. At Hunter Street East, a steel platform has been constructed to support shaft excavation activities underneath and new site amenities have been built at Richard Johnson Square. The existing acoustic shed has now been removed from site, while demolition of the old site facilities and foundations is still ongoing.



The steel platform installed at Hunter Street East.

Further down Hunter Street at the West shaft site, piles have been installed to support the installation of a steel platform, which will be the top of the shaft, allowing shaft excavation to continue below ground.



Piling activities at Hunter Street West.

Heritage highlights

Archaeological excavation at the Hunter Street West site took place simultaneously to cavern construction. Over three months, archaeologists carefully excavated the former De Mestre Place, uncovering sandstock brick footings dating to the 1820s to 1840s, which formed part of the residence of the then prominent Sydney merchant, Prosper de Mestre. Smaller artefacts, such as glass beads, a coin (circa 1834), slate pencils and glass bottles, bones and metal buttons were also found.

A community open day was held at the West site last month, during National Archaeology Week. Visitors had the opportunity to learn about the history of the site, from its importance to Gadigal people as a resource rich area, to its development in the nineteenth and twentieth centuries, and hear fascinating stories about life in early Sydney town from ETP's expert archaeologists.



Over 370 people attended the Heritage Open Day event to see the unique artefacts found during archaeological excavations, look into the West shaft and speak to the subject experts on site.

TBM tunnelling update

Tunnel boring machines (TBMs), Ruby and Jessie, have reached their standby locations at Pyrmont Station. Once the TBMs break through at Pyrmont, they will traverse the 313-metre-long station cavern and crossover cavern before being relaunched to begin their 1.1 km journey to Hunter Street Station via Darling Harbour.

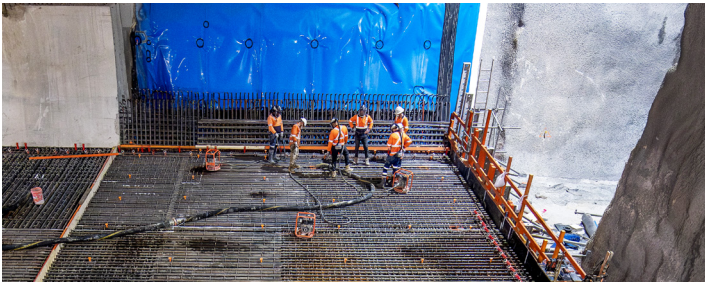
After both TBMs have bored through each tunnel, the permanent invert (tunnel floor) is installed, and underground cross passages are constructed at regular intervals. A cross passage is a connection between the twin metro rail tunnels. These passages are an important operational safety feature and allow people to move from one tunnel to another in case of an emergency.

Six-month construction lookahead

Activity (subject to change)	Jul	Aug	Sep	Oct	Nov	Dec
Demolition of existing acoustic shed and site facilities	●●	●●	●●			
Site establishment	●●●	●●●	●●●	●●	●●	
Excavation of station shafts	●●●	●●●	●●●	●●●	●●●	●●●
Ground support activities around site perimeter	●●●	●●●	●●●	●●●	●●●	●●●
Tunnel permanent concrete lining work	●●●	●●●	●●●	●●●	●●●	●●●
Utility and geotechnical investigations	●●●	●●●	●●●	●●●	●●●	●●●
Site surveys and installation of building and ground monitoring equipment	●●●	●●●	●●●	●●●	●●●	●●●
Hunter Street East ● Hunter Street West ● Some out of hours works required ●						



A beam is installed beneath the Hunter Street footpath as part of the eastern shaft niche excavation.



The installation of steel reinforcement in the station cavern invert (tunnel floor).

Our community teams

JCG has a team committed to working with the community as it delivers the project. The team plays an active role in getting to know and understand the local community to ensure that impacts on residents and local businesses are minimised.

Please contact the JCG community team on **1800 612 173** or **MetroTunnelsJCGJV@transport.nsw.gov.au** if you have any questions or would like to provide feedback about the ETP works at Hunter Street. JCG will continue to keep you updated on the progress of work in your area.

Weekly email updates

Weekly email updates provide the latest information about upcoming work. If you'd like to receive these email updates, please send a request to **MetroTunnelsJCGJV@transport.nsw.gov.au** and we will add you to the distribution list.

Work hours

Standard construction hours for the sites are **7am – 6pm Monday to Friday and 8am – 6pm Saturday**. Some work activities are conducted outside of standard construction hours and the community will be notified via email updates as required.

Tunnelling and support work is undertaken **24 hours per day, seven days a week**. JCG acknowledges that this work continues to have an impact on local residents and businesses, and thanks you for your patience and cooperation so far.

Sydney Metro Connect - another way to stay informed

Download Sydney Metro Connect onto your smart device to stay informed about current work, project milestones and receive notifications for upcoming work in your area – all in one place. Sydney Metro Connect is available from the App Store or Google Play.

Contact us

If you have any questions or would like more information please contact our project team:

1800 612 173 Community infoline open 24 hours

MetroTunnelsJCGJV@transport.nsw.gov.au

Sydney Metro West

PO Box K659, Haymarket NSW 1240



Translating and interpreting service

If you need help understanding this information, please contact the Translating and Interpreting Service on **131 450** and ask them to call us on **1800 612 173**.



Access information in over 100 languages.

Download **Sydney Metro Connect** from the App store or get it on Google Play.

