

Mr Rob Sherry  
Team Leader Compliance – Government Projects  
Department of Planning, Housing and Infrastructure  
Locked Bag 5022  
PARRAMATTA NSW 2124

7 April 2025

Ref:201208-ER\_DPHI-March 2025

Dear Rob

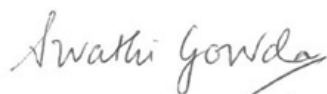
**RE: Sydney Metro - Sydney Metro West SSI - ER Monthly Report for March 2025**

Healthy Buildings International (HBI) submits this report to the Secretary in accordance with:

- Condition A30 (k) of the Sydney Metro West, Concept and Stage 1 SSI 10038 Approval (11 March 2021), and associated modifications (MOD 1 - 28 July 2021, MOD 2 - 3 June 2022, MOD3 – 4 July 2022, MOD 4 - 23 December 2022 and MOD 5 – 20 September 2023); and
- Condition A32(k) of the Sydney Metro West – The Bays to Sydney CBD SSI 19238057 Approval (24 August 2022) and associated modifications (MOD 1 – April 2023, MOD 2 – October 2023).

The attached summary details the key activities undertaken by Environmental Representatives for Sydney Metro – Sydney Metro West for the month of March 2025.

Yours sincerely



Swathi Gowda  
Environmental Representative

Cc:

DPHI: Major Projects Portal

Sydney Metro: Matthew Marrinan, John Ieroklis, Andrew Hendy, Cath Snelgrove, Ari Stypel, Ryan Butler, Sarah Kemp, Syed Shah, Valerie Lebon, Sarah Lepre

Contractors: Jared Lipton (AFJV), Steph Mifsud (GLC), Sally Reynolds (JCG)



## Table of Contents

<b>1</b>	<b>Phase B - Central Tunnelling Package .....</b>	<b>4</b>
1.1	Key Construction Activities During the Period .....	4
1.2	Key Construction Activities Look Ahead.....	5
1.3	ER Inspections .....	5
1.3.1	Photos .....	6
1.4	Endorsed Documents .....	7
1.5	Complaints .....	7
1.6	Compliance.....	7
1.6.1	Incidents.....	7
1.6.2	Non-compliance and Potential Non Compliance .....	7
1.6.3	Audits .....	7
1.7	Looking Forward – Core Focus Areas .....	7
<b>2</b>	<b>Phase F – Western Tunnelling Package.....</b>	<b>8</b>
2.1	Key Construction Activities During the Period .....	8
2.2	Construction Activities Look Ahead .....	9
2.3	ER Inspections .....	10
2.3.1	Photos .....	11
2.4	Endorsed Documents .....	13
2.5	Complaints .....	13
2.6	Compliance.....	14
2.6.1	Incidents.....	14
2.6.2	Non-compliance.....	14
2.6.3	Audits .....	14
2.7	Looking Forward – Core Focus Area .....	14
<b>3</b>	<b>Phase G – Eastern Tunnel Package.....</b>	<b>15</b>
3.1	Key Construction Related Activities During the Period .....	15
3.2	Key Construction Activities Look Ahead.....	16
3.3	ER Inspections .....	16
3.3.1	Photos .....	16
3.4	Endorsed document/s.....	18
3.5	Complaints .....	18
3.6	Compliance.....	18
3.6.1	Incidents.....	18
3.6.2	Non-compliance .....	18
3.6.3	Audits .....	19



3.7	Looking Forward – Core Focus Areas .....	19
4	Sydney Metro Retained Obligations and Other Activity .....	20
4.1	Key Construction Activities During the Period .....	20
4.2	Key Construction Activities Look Ahead .....	20
4.3	ER Inspections .....	20
4.3.1	Photos .....	20
4.4	Endorsed Document/s .....	20
4.5	Complaints .....	20
4.6	Compliance .....	20
4.6.1	Incidents .....	20
4.6.2	Non-compliance .....	20
4.6.3	Audits .....	20
5	Statement of Limitations .....	21
6	Appendix A – ER Document Endorsement Records (ETP only) .....	22



## 1 PHASE B - CENTRAL TUNNELLING PACKAGE

The Environmental Representatives for Phase B of Sydney Metro West are:

- Michael Woolley
- Maulik Bapodara
- Swathi Gowda
- Jo Robertson

Phase B – Central Tunnelling Package (CTP) is being delivered by Acciona Ferrovia Joint Venture (AFJV). Phase B of Sydney Metro West has been further broken into:

- Phase B1: Civil works
- Phase B2: Tunnelling works

The AFJV hold EPL 21610 for this Phase of works. Activities defined as Phase B2-Tunneling Works in the Staging Report for Metro West commenced during the November 2022 reporting period at Burwood North.

### 1.1 Key Construction Activities During the Period

#### The Bays

- Completion of contracted works in the areas to the south of the Port Access Road. Some defects work after handover. Ongoing operation of the water treatment plant and management/maintenance of areas handed over.
- Completion of the removal of the spoil shed concrete slab. Construction of sub-grade and gravel base cover to infill the void left by the removal of the slab. Install drainage to the area. Use of temporary water management including sumps and pumps to direct runoff to the water treatment plant.
- Completion of works on the sewer line through the spoil shed area.
- Cessation of the use of the staff car park in the former TBM laydown area for light vehicle parking and handover of this area of the site to Sydney Metro.

#### Five Dock

- West Shaft: Ongoing concrete FRP works for the cavern lining. Use of a crane on the surface. Concrete deliveries to the western site for the concrete works. Ongoing removal of some site sheds.
- East Shaft: Ongoing demolition of the acoustic shed including the removal of wall panels with a crane working from inside the shed.
- Ongoing use of a house on Waterview Street adjacent the eastern shaft for project offices.
- Water directed to the Bays water treatment plant for treatment.

#### Burwood North

- Completion of contracted works including removal of the acoustic shed; removal of footings for the shed; clean up of the site; construction of blinding layer in the base of the station box. AFJV are completing some additional works as requested by Sydney Metro and are managing the site until a Transitional Service Contractor is appointed.
- Operation of the water treatment plant with ongoing discharge direct to stormwater instead of to the Bays.
- South Shaft: Use of site sheds for BN personnel.



## **North Strathfield**

- Storage and removal of concrete and spoil wastes from cross passage and invert construction.
- Deliveries of concrete for cross passage construction including OOHs.
- FRP works for tunnel headwalls.
- Pumping of water from the station box to Burwood North for treatment and discharge.
- Preparation for handover of the site.

## **Sydney Olympic Park**

- Completion of contracted works for the surface and station box. Completion of works for the Nozzle lining including waterproofing and concreting.
- Laydown of materials at the surface for tunnellers who are still using the site. Support for cross passage works including daytime and OOHs deliveries of concrete.
- Tunnelling personnel using offices, workshop and laydown. Project Office being used by AFJV and Sydney Metro personnel.

### **1.2 Key Construction Activities Look Ahead**

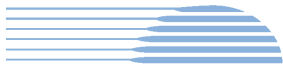
- Planned completion of contracted works for the remaining sites in April and early May with minor defect works after this time.
- Ongoing activities as described above including demobilisation activities including the ongoing removal of the acoustic shed at Five Dock.

### **1.3 ER Inspections**

There were four ER inspections conducted during the reporting period on each Thursday of March. Sites were generally inspected on an alternating basis with the Bays sites inspected on a weekly basis due to the risks of works being undertaken close to the harbour. The following action were raised during the inspections:

- Investigate the reason for needing the alarms evident at the eastern shaft at Five Dock, and how the alarms can be turned off or noise levels from the alarms reduced.
- Replenish all spill kits across the site at SOP with spill response materials as needed.
- Address visual amenity and light spill impacts from the toilet shed at the exit of the site at Burton Street at BN.

AFJV have been responsive in addressing actions raised during ER Inspections, with the above actions closed out.



### 1.3.1 Photos



Figure 1.1 Surface and drainage in the area of the former Spoil shed slab (The Bays).

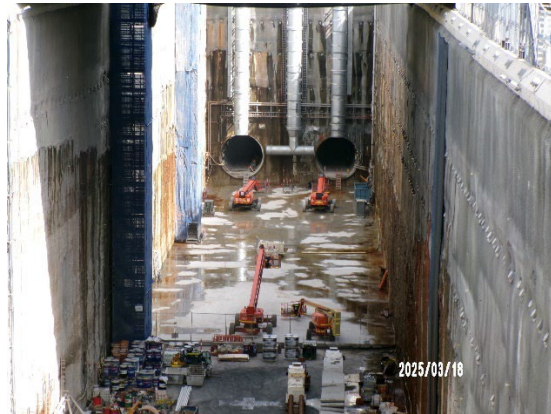


Figure 1.2 Station Box (The Bays- looking west).



Figure 1.3. Removal of the acoustic shed (Five Dock East).



Figure 1.4 Management of construction wastes (Burwood North).



Figure 1.5 Station Box (Burwood North).



Figure 1.6 Activities in the station box (North Strathfield).



Figure 1.7 Station Box (SOP).



Figure 1.8 Concrete hardstand areas. Tunnellers workshop. (SOP).

#### 1.4 Endorsed Documents

There were no documents endorsed or approved by the ER during the reporting period.

#### 1.5 Complaints

Based on the monthly Sydney Metro Complaint Register issued for March 2025, there were 5 complaints reported for the month which compares with 6 complaints received during February 2025.

Three complaints were for the Five Dock site all of which were related to noise and vibration during standard hours. This coincides with ongoing activities to remove the acoustic shed which will be completed in April. One of the complaint's also related to business impacts.

One complaint related to OOHs noise and vibration at Burwood North and one complaint related to worker parking at North Strathfield.

#### 1.6 Compliance

##### 1.6.1 Incidents

No Incidents as defined in the Infrastructure Approval were reported by AFJV during the reporting period. AFJV reported a small concrete spill from a concrete truck outside the North Strathfield site.

##### 1.6.2 Non-compliance and Potential Non Compliance

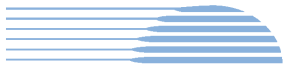
There were no Non Compliance reports (NCRs) issued during the reporting period.

##### 1.6.3 Audits

An Independent Environmental Audit was conducted during February 2025 with compliance assessment and reporting occurring in March 2025. It is anticipated the Draft Report will be issued in April 2025.

#### 1.7 Looking Forward – Core Focus Areas

- Demobilisation activities including shed removal at Five Dock and related impacts.
- Water and dust management at the Bays.



## 2 PHASE F – WESTERN TUNNELLING PACKAGE

The Environmental Representatives for Phase F of Sydney Metro West are:

- Swathi Gowda
- George Kollias
- Michael Woolley
- Maulik Bapodara

Phase F – Western Tunnelling Package (WTP) is being delivered by Gamuda Australia Laing O’Rourke Consortium (GLC).

GLC are constructing this Phase of Sydney metro West under EPL 21676.

### 2.1 Key Construction Activities During the Period

During the reporting period, the following activities were being undertaken at the Sydney Olympic Park (SOP), Westmead, Parramatta and the Clyde stabling and maintenance facility which includes the Rosehill, Clyde Dive and Clyde MSF construction sites:

#### SOP

- Tunnel invert FRP (Form Reo Pour) continuing
- Concrete defect rectification
- Site demobilisation ongoing

#### Westmead

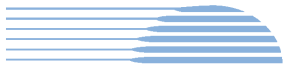
- Arch and wall cage installation within crossover cavern
- Arch and kicker pour within crossover cavern
- Station cavern invert excavation
- Spoil loadout (crane and kibble at surface level)
- Sewer CCTV investigation works

#### Parramatta

- Eastern Station Box:
  - D-Wall repairs ongoing
  - Blinding layer pour
- Western Station Box: Pending
- Central Station Box Central: Strut and waler installation and spoil excavation
- Archaeology:
  - Zone 8a - Archaeological Investigation and clearance work completed
  - Zone 8a – Backfilling and levelling works
  - WTP is operating and discharging as necessary
- Other works:
  - United Lane crash barrier works completed
  - Staged removal of container wall and piling
  - Northern end of site – Substation slab pour completed

#### Rosehill

- TBM1 and TBM 2 - on route towards Parramatta
- Cross passage excavation at XP78 and XP74 currently



- Water Treatment Plant operation including off-site discharge is ongoing
- Spoil stockpiling within shed and spoil going off-site

### **Clyde Dive**

- Lining Erection Machine (LEM) and supporting works ongoing (24 hours)
- Electric Tower Crane operational
- Caverns - water proofing, FRP and arch lining works, including large concrete pours ongoing
- Concrete pours for deck above dive structure and deflection wall ongoing
- HV Protection Slab piling works

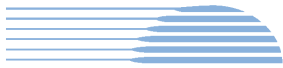
### **Clyde MSF**

- Amalgamation of East and West teams/sites continuing
- Demobilisation of West site sheds – completed
- Stormwater installation across site
- FRP works for water conveyance structure over Duck Creek ongoing
- Flood Relief Culvert excavation commenced
- Service searching for future HV/LV realignment on surrounding streets
- Temporary Creek crossing (A'Becketts Creek) removed
- Hot spot removal and excavation for future flood relief basin commenced
- Retaining walls and backfill continuing across East, including security fence
- Sydney Water WM2 leak fixed and pending re-commissioning by Sydney Water
- Bio Basin construction ongoing by Ocean Protect
- Stockpiling and dewatering activities (as required)

## **2.2 Construction Activities Look Ahead**

The key construction activities planned are similar to those listed in Section 3.1, with the addition of the following:

- Various OOHW (conducted under EPL).
- Installation of a new potable water main (in two areas) adjacent to the Clyde MSF site and utility works along local roads in the vicinity of Clyde MSF to relocate High Voltage and Low Voltage (HV/LV) route.
- Removal of acoustic sheds (planning underway, removal timing TBC).



### 2.3 ER Inspections

Currently, the sites are divided into two groups and visited typically fortnightly for ER inspections. The two groups are:

- Parramatta, Westmead and SOP
- Clyde Dive, Clyde MSF and Rosehill

Four ER inspections were conducted during the reporting period (07/03/2025, 14/03/2025, 21/03/2025 and 28/03/2025); with opportunities for improvement (OFIs) identified and the following actions (summarised) raised during the month:

#### Clyde Dive

- Nil

#### Clyde MSF

- Polymer (soil binder) to be sprayed on remainder minor sections/gaps (Fleet St).

#### Rosehill

- Minor general housekeeping required at laydown area.

#### Parramatta

- GLC to investigate spoil truck observed to be parked on George Street (2P Area), provide actions taken and proposed to address spoil truck based on investigation outcomes.
- Minor general housekeeping required at laydown area.
- GLC to review/re-stock spill kits, where required (Parramatta and Westmead).

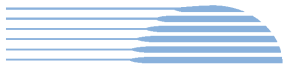
#### Westmead

- GLC to confirm if spoil loadout via kibble and crane (at surface level) is covered/requires to be covered in the Project DNVIS and provide attended noise monitoring results.

#### SOP

- Nil - not inspected and scheduled to be inspected in April 2025.

GLC continue to be responsive and provide close-out of actions raised.



HBI

Healthy Buildings International Pty Ltd

### 2.3.1 Photos



Figure 2.1- Parramatta Site: Substation slab pour completed.



Figure 2.2- Parramatta Site: Zone 8a backfilling and levelling works.



Figure 2.3 – Parramatta Site: Staged container wall removal, piling and stockpiling works.



Figure 2.4 – Parramatta Site: Installation of struts and walers – Central Station Box.



Figure 2.5 –Parramatta Site: Spoil load out from Central Station Box.

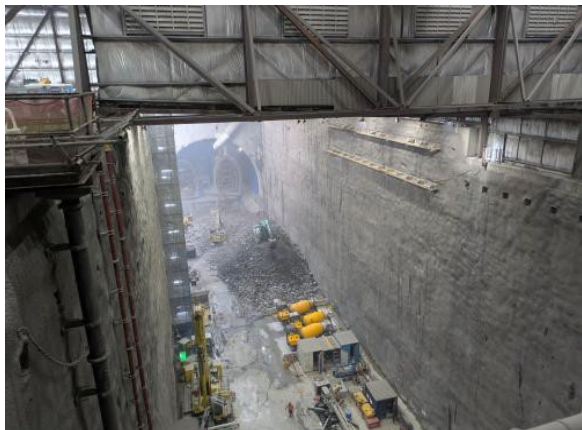


Figure 2.6 – Westmead Site: Excavation of station cavern continuing, with dust suppression measures observed.

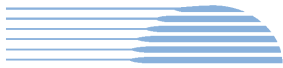


Figure 2.7– Westmead Site: Spoil load out via crane and kibble.



Figure 2.8 – Westmead Site: Spoil truck exiting site.



Figure 2.9 – Rosehill Site: Spoil load-out within shed at Rosehill.



Figure 2.10 - Clyde Dive Site: Cranage and FRP works (CW6 and CW7).



Figure 2.11 – Clyde Dive Site: Piling work for HV Protection Slab works.



Figure 2.12 – Clyde MSF: Site sheds demobilised from previous MSF West area.



Figure 2.13 –Clyde MSF Site: Temporary crossing over A'Becketts Creek removed.



Figure 2.14 – Clyde MSF Site: Section 7 (Slip form area) – Screen and barrier installation works.



Figure 2.15 – Clyde MSF Site: New internal haul road observed to be operational, with Moxies transferring material.



Figure 2.16 – Clyde MSF Site: GLC reports plank placement on water conveyance structure completed. FRP works continuing.

## 2.4 Endorsed Documents

The following documents were approved or endorsed by the ER during the reporting period:

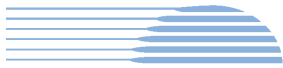
- Nil

## 2.5 Complaints

Based on the Sydney Metro Complaint Register for March 2025, there were five complaints reported during the month, compared to four complaints in February 2025. Of the complaints reported during March, two complaints were deemed to be not related to SM activities, with remaining complaints summarised below:

### Westmead

- One complaint relating to OOH noise and vibration
- One complaint relating to tunnelling (Westmead)- OOH knocking noise
- One complaint relating to worker behaviour (truck driver behaviour on Hawkesbury Rd)



## **2.6 Compliance**

### **2.6.1 Incidents**

No incidents considered to represent Incidents as defined under the Project Approval were reported to or observed by the ER during the reporting period.

Class 3 incidents relating to leaks/spills were reported under GLC/SM reporting system during the reporting period.

### **2.6.2 Non-compliance**

Nil non-compliance reports provided to the ER during the reporting period.

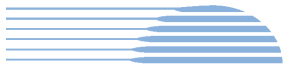
### **2.6.3 Audits**

Nil. IEA completed in March 2025, with Draft IEA report scheduled for issue in April 2025.

## **2.7 Looking Forward – Core Focus Area**

The core focus areas for upcoming works are:

- Ongoing demobilisation activities at SOP.
- Cross passage works in Parramatta.
- Planning and preparatory works for site shut down period around Easter/ Anzac PH (TBC, under finalisation).
- Installation of a new potable water main (in two areas) adjacent to the Clyde MSF site and utility works along local roads in the vicinity of Clyde MSF to relocate High Voltage and Low Voltage (HV/LV) route.
- Removal of acoustic sheds (planning underway, removal timing TBC).



### 3 PHASE G – EASTERN TUNNEL PACKAGE

The Sydney Metro West Eastern Tunnel Package is Stage 2 of the Sydney Metro West CSSI and is described as major civil construction works between The Bays and Sydney CBD, including station excavation at Pyrmont and Hunter Street and tunnel excavation between the Bays and Hunter Street. Stage 2 (SSI 19238057) was approved on the 24 August 2022.

The Environmental Representatives for the Sydney Metro West Eastern Tunnel Package are:

- Michael Woolley
- Maulik Bapodara
- Swathi Gowda
- Jo Robertson

The Eastern Tunnelling Package (ETP) is being delivered by John Holland CPB Ghella Joint Venture (JCG) with the contract being awarded in November 2022. Sydney Metro notified DPHI that the date of commencement of construction was 17 March 2023. JCG have received Environmental Protection Licence (EPL 21784) for the project.

#### 3.1 Key Construction Related Activities During the Period

Works conducted during the reporting period included:

##### Hunter Street East:

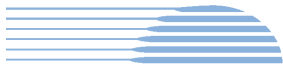
- Access through the Bligh Street acoustic shed for tunnelling activities; spoil removal; and concrete deliveries. Ongoing excavation and other works (24/7) of adits and other caverns and tunnels by road headers. Construction of ground support. Use of air ventilation systems and other tunnelling support activities.
- Commencement of demolition of the acoustic shed commencing with the removal of the roof of the shed after installation of B-Class hoarding internal to the shed for protection of plant. Closure of the southern access to the shed.
- Completion of the construction of the steel deck with access driveways to O'Connell Street and Hunter Street.
- Ongoing excavation works by rock hammer on the Bligh Street side of the site.
- Ongoing construction of the frame and deck for the crib sheds over Richard Johnson Square.

##### Hunter Street West:

- Excavation of soils in the SW corner of the site and load out of some demolition wastes and spoil through the exit to Hunter Street.
- Deliveries of fill material; placement and compaction of the fill to construct a piling pad adjacent Skinners Hotel.
- Ongoing deliveries and pedestrian management along Hunter Street after its closure outside the site. Installation and use of Portaloo's within this area.

##### Pyrmont East:

- Ongoing excavation of the permanent shaft by multiple excavators with rock hammers operating under the steel deck. Ongoing excavation of the station and cross over caverns. The depth of the permanent shaft was similar to the depth of the temporary shaft by the end of the month.
- Spoil load out by kibble and gantry crane in the permanent shaft and from the tunnelling activities in the temporary shaft within the acoustic shed. Construction of ground support.
- Ongoing use of the tunnel ventilation system including scrubber units located in the tunnel.
- Use of site amenities/sheds on the steel deck to the east of the acoustic shed and use of one lane on Union Street for storage of containers and a sub-station.
- Ongoing treatment of water generated from tunnelling activities and groundwater. Discharge of treated water to stormwater system.

**Pymont West:**

- Ongoing excavation of the shaft walls and wall support using multiple rock hammers, including the introduction of a larger 74T excavator.
- Ongoing use of the kibble for loading out spoil onto trucks. Trucks exiting to Pymont Street.
- Drainage of water to the tunnelling operations.

**The Bays:**

- Ongoing tunnelling by TBM1. Preparations for commencement of works to excavate the first cross passages.
- Water treatment and discharge using the Construction water treatment plant.
- Ongoing operation of the slurry treatment plant; spoil shed and related equipment. Load out of spoil from the shed.
- Receipt and storage of spoil from Hunter Street and Pymont sites and load out spoil.
- General support activities such as in the workshops, segment delivery and storage and use of site offices.
- Use of the truck marshalling area by trucks waiting to attend other project sites.

**3.2 Key Construction Activities Look Ahead**

The following works are planned to occur:

- Ongoing activities as described above.
- Installation of the site sheds at Richard Johnston Square.
- Ongoing excavation of the cavern (24/7) and permanent shafts at the Pymont sites. Load out of spoil.
- Ongoing ground support and excavation at Hunter Street East, as well as removal of the acoustic shed.
- Ongoing tunnelling of TBMs at the Bays and treatment of slurry.

**3.3 ER Inspections**

Four ER inspections were conducted during the reporting period on each Tuesday during March. The following actions were raised during the inspections:

- Manage the exit to Hunter Street West such that dirty water is not generated or directed to the stormwater pits on Hunter Street (action was addressed on the day of the inspection).
- Ensure water is turned off during filling of the water cart at the Bays once the tank is full. Demonstrate that the current system of triggering the pump to operate at the low point sump is adequate for rain events.

JCG were responsive to ER feedback during inspections and for the close out of actions raised.

**3.3.1 Photos**

Figure 3.1 Hunter Street East: Construction of the steel deck completed by the end of the month.



Figure 3.2 Hunter Street East: Removal of the shed roof.



HBI

Healthy Buildings International Pty Ltd



**Figure 3.3 Hunter St West: Construction of piling pad.**



**Figure 3.4 Hunter Street West: Water management in wet conditions.**



**Figure 3.5 Pyrmont East: Shaft excavation by rock hammers.**



**Figure 3.6 Pyrmont East: Use of kibbles for spoil load out.**



**Figure 3.7 Pyrmont West: Excavation of the permanent shaft.**



**Figure 3.8 Pyrmont West: Use of kibble to load trucks.**



Figure 3.9 The Bays: Ventilation for the two TBMs in the tunnels.



Figure 3.10 The Bays: Sweeper truck operating on haul roads.

### 3.4 Endorsed document/s

The following documents were signed, approved or endorsed during the reporting period.

- Minor Ancillary Application - Union Street Pyrmont East (Rev J)
- Minor Ancillary Facility Application Hunter Street Portaloo's (Rev B)

In accordance with CoA A32(d)iii the written statements endorsing documents identified in A14, A21, C1, C5 and C14 are provided in Appendix A (if relevant).

### 3.5 Complaints

The monthly Sydney Metro complaint register for March 2025 indicated 26 complaints were reported to the Project that related to ETP activities, one of which was determined to not be project related. This compares to 18 complaints received in February 2025.

Twenty of the complaints related to the Pyrmont sites with 19 of these complaints having a noise and vibration aspect covering noise and vibration during Standards Hours or from Out of Hours works, or from both. One complaint related to air quality (dust). The noise complaints correlate to ongoing hammering in the shaft during standard hours, including the introduction of a larger excavator; as well as ongoing tunnelling (cavern excavation) works at night.

Five of the complaints related to the Hunter Street sites of which three were for noise and vibration during standard hours and two for property damage. One of the property damage complaints was determined to not be related to Sydney Metro activities.

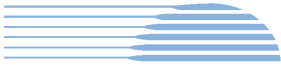
### 3.6 Compliance

#### 3.6.1 Incidents

No incidents considered to represent an Incident as defined under the Project Approval were reported to the ER during the reporting period.

#### 3.6.2 Non-compliance

No Non-Compliance reports were provided to the ER during the reporting period.



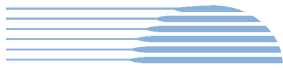
### **3.6.3 Audits**

Compliance assessment and reporting for the Independent Environmental Audit that was commenced in February 2025 was ongoing in March, with the Draft IEA report scheduled for issue in April.

### **3.7 Looking Forward – Core Focus Areas**

In the next reporting period, the ER Team will be focused on:

- General monitoring of construction activities
- Noise associated with excavation of the Pymont and Hunter Street shafts and OOHs tunnelling at Pymont.
- Potential for tracking of dirt at the Pymont and Hunter Street sites.



## 4 SYDNEY METRO RETAINED OBLIGATIONS AND OTHER ACTIVITY

The Environmental Representatives for the Sydney Metro Retained Obligations and other Activities are:

- Swathi Gowda
- Jo Robertson

The Sydney Metro Retained Obligations and other Activities is being delivered by Sydney Metro with various sub-contractors delivering the works. These works do not require an EPL.

### 4.1 Key Construction Activities During the Period

The ER is not aware of other Sydney Metro managed construction activities during the period.

### 4.2 Key Construction Activities Look Ahead

The ER is not aware of other Sydney Metro managed construction activities.

### 4.3 ER Inspections

No ER Inspections during the reporting period.

#### 4.3.1 Photos

Not applicable as there were no inspections.

### 4.4 Endorsed Document/s

Sydney Metro revised the Phasing Report to include Phase I for Transitional Services and Phase J for North Strathfield Power Enabling Works. As required by Condition of Approval A10 of the Sydney Metro West – Concept and Stage 1 Construction Approval (SSI 10038, 11 March 2021) the document “*Sydney Metro West Stage 1 – Phasing Report, Rev 1.8, February 2025*” was endorsed by the ER on 6 March 2025 prior to subsequent submission by Sydney Metro to the Planning Secretary on 10 March 2025.

### 4.5 Complaints

No complaints have been reported to the ER during the reporting period.

### 4.6 Compliance

#### 4.6.1 Incidents

No incidents have been reported to the ER during the reporting period.

#### 4.6.2 Non-compliance

No non compliances have been reported to the ER during the reporting period.

#### 4.6.3 Audits

Independent Audit status for WTP, CTP and ETP are as reported in other sections of this Monthly Report.



## **5 STATEMENT OF LIMITATIONS**

Healthy Buildings International (HBI) has prepared this report in accordance with the requirements of Condition A30(k) of the Sydney Metro West, Concept and Stage 1 SSI 10038 Approval (11 March 2021), and Condition A32(k) of the Sydney Metro West – The Bays to Sydney CBD SSI 19238057 Approval (24 August 2022).

The report is for the sole purposes of Department of Planning, Housing and Infrastructure (DPHI) and Sydney Metro. It has been prepared based on generally accepted practices and standards at the time it was prepared. No other warranty, expressed or implied, is made as to the professional advice included in this Report. This report did not assess any aspects relating to safety.

Where the Report indicates that information has been provided to HBI by third parties, HBI assumes no liability for any inaccuracies in or omissions to that information.

This Report was prepared based on the conditions encountered and information reviewed at this time. HBI disclaims responsibility for any changes that may have occurred after this time.

This Report should be read in full. No responsibility is accepted for use of any part of this report in any other context or for any other purpose or by third parties. This Report does not purport to give legal advice. Legal advice can only be given by qualified legal practitioners.

Except as required by law, no third party may use or rely on this Report unless otherwise agreed by HBI in writing. Except as specifically stated in this section, HBI does not authorise the use or findings of this Report by any third party.

To the extent permitted by law, HBI expressly disclaims and excludes liability for any loss, damage, cost or expenses suffered by any third party relating to or resulting from the use of, or reliance on, any information contained in this Report. HBI does not admit that any action, liability or claim may exist or be available to any third party.



HBI Healthy Buildings International Pty Ltd

## **6 APPENDIX A – ER DOCUMENT ENDORSEMENT RECORDS (ETP ONLY)**

Nil