

# Notification – Orchard Hills Metro Station and the Stabling and Maintenance Facility

Sydney Metro is Australia's biggest transport project.

June 2025

Sydney Metro – Western Sydney Airport is the new metro railway line which will service Greater Western Sydney and the new Western Sydney International (Nancy-Bird Walton) Airport. A city-shaping project, the new 23-kilometre metro railway will connect Bradfield city centre with St Marys in the north – where customers can connect to the existing Sydney Trains suburban T1 Western Line. The NSW and Australian governments have a shared objective of having Sydney Metro – Western Sydney Airport operational when the airport opens for passenger services.

Parklife Metro consortium is delivering the Stations, Systems, Trains, Operations and Maintenance (SSTOM) works. See the list below for the work activities at Orchard Hills during June.

## What's new in June?

- installation of galvanised steel troughing (GST) and cable trays on the viaducts
- installation of hydrant pipes
- delivery and installation of precast concrete beams
- tree removal on Kent and corner of Lansdowne Road

## Stations, Systems, Trains, Operations and Maintenance work includes:

### Orchard Hills Metro Station:

- formwork, steel fixing and concrete pours inside the station box
- tunnel fit-out works
- construction of internal blockwork walls inside the station box
- surveying and geotechnical investigations, including potholing, non-destructive digging and testing along local surrounding roads to inform utility designs
- road surface and restoration work, including filling in potholes on Kent, Lansdowne Road and other local roads.

### Stabling and Maintenance Facility:

- major earthworks including importing materials, excavations, constructing permanent basin, and compacting for the rail areas
- construction of a new 132kV powerline, connecting the substation to the Endeavor Energy Switching Station at Patons Lane
- major drainage works including excavations, installing pits and pipes and backfilling
- site-wide concrete works, including formwork, steel fixing for various structures such as the substation, maintenance administration building, operations control centre, and across the site
- combined services route and trunk services installation
- continuation of works on the access road
- installation of steel structures and blockwork
- Mechanical Electrical and Plumbing and Architectural finishes activities at the substation;
- Commencement of track formation scope;

- Cable pulling along Patons Lane towards the substation.

### Linewise works – Orchard Hills to Warragamba Pipeline

- ongoing deliveries of rail track, materials, machinery and equipment to the project alignment at Lansdowne Road and Patons Lane. rail dragging from the surface to the tunnel between Orchard Hills and St Marys and along the mainline between Orchard Hills to Warragamba Pipeline
- installation of galvanised steel troughing (GST) and cable trays on the viaducts
- service utility installations and surveying
- concreting and formwork for the Blaxland Viaduct, Unnamed Viaduct, Warragamba viaducts and along the mainline between Orchard Hills to Warragamba Pipeline.
- installations of brackets and cable containment in the tunnels from Orchard Hills toward St Marys
- combined service route installations
- rail track and drainage installations
- installation of light poles
- ongoing deliveries of materials, machinery and equipment to the site compounds at Kent Road and Lansdowne Road

### Work hours:

Standard construction hours are **Monday to Friday** from **7am to 6pm** and **Saturdays** from **8am to 1pm**.

Some work will also be required to take place outside our standard construction hours to minimise traffic impacts or to ensure the safety of pedestrians, motorists and our workers. Out-of-hours work activities will be carried out in line with the project Environmental Protection Licence, Road Occupancy Licences, and Transport for NSW requirements.

### Out-of-hours work includes:

- delivery of over-sized equipment and machinery and materials
- precast beam delivery and installation at Orchard Hills Metro Station
- 24/7 tunnel fit out activities
- extended work hours for excavation, FRP, steel fixing, concrete pours and concrete finishing works inside the station box at the Orchard Hills site and at the Stabling Maintenance Facility across various structures including the OCC and M&A building
- dewatering activities at the Orchard Hills and Stabling Maintenance Facility sites
- concrete batching plant operations at the Orchard Hills Metro Station site
- construction of a new 132kV powerline on Patons Lane including excavations, trenching and backfilling, cable laying, and installation of utility services
- on-going combined services route (CSR) works and trunk service installation
- concreting and formwork for the viaducts
- rail track installations
- service utility installations and surveying
- road surface and restoration works including filling in potholes on Kent, Lansdowne Road and other local roads.

*Impacted surrounding residents and businesses will be notified in advance of any out-of-hours work.*

### What to expect:

- mitigation measures will be in place to minimise impacts including installing noise blankets, where feasible, respite periods during high noise activities, noise and vibration monitoring, and water carts for dust suppression
- increased light and heavy vehicle movements on surrounding roads, and local road closures. All vehicles will be turned off when not in use, non-tonal reversing alarms will be fitted to plant and

machinery and trucks will avoid reversing into and on site, where feasible

- temporary lighting to ensure a safe worksite will be directed away from properties
- communication will be limited to radios only when moving and unloading equipment, with no use of horns or loud radios
- traffic control and signage to safely assist motorists, pedestrians, and cyclists.

### Equipment used:

Equipment used will include, but is not limited to, excavators, cranes, dozers, graders, rollers, vacuum truck, water carts, heavy and light site vehicles, generators, survey equipment, traffic management devices, concrete agitators, pneumatic drills, concrete saws, bobcats, chainsaws, telehandler, hand drill, non-powered hand tools (including hammers), franna, GenSet, light vehicles and powered hand tools.

### Changes to traffic, pedestrian, and cyclist routes:

During these works, traffic control will be in place to assist motorists, pedestrians, and cyclists with any changes to traffic conditions. This may include contraflow, redirecting traffic and stop-slow traffic controls. The time of these changes will vary and are dependent on road authority approvals.

Access to driveways and buildings will be maintained at all times. Residents will be separately notified if access to driveways will be affected, or access to private property is required.

### Three monthly out-of-hours lookahead activities:

Activity	Equipment	Work hours	Timing
<b>SSTOM works – Orchard Hills Metro Station site</b>			
<b>Concrete pours and finishing work in station box</b>	Concrete pump, concrete agitator, concrete Vibrator, helicopter, screed, hand drill, non-powered hand tools (including hammers), franna, GenSet, light vehicles	<b>6pm to 12am, and 5am – 10pm - Monday to Friday</b>  <b>6am to 6pm, Saturdays</b>	Ongoing - 2025
<b>Works within the station box to support the tunnel and underground station box fit out</b>	Gantry Crane (Electric), telehandler, excavator, front end loader, hand drills	24 hours a day, seven days a week	Ongoing - 2025
<b>Concrete batching plant operations</b>	Drives and conveyors, front end loader, concrete loading, concrete slumping, concrete truck, light vehicles	<b>5am to 10pm, Monday - Friday.</b>  <b>6am to 6pm Saturday</b>	Ongoing - 2025
<b>Installation, incoming and outgoing deliveries of oversized construction material</b>	OSOM, franna, mobile crane, gantry crane (Electric), telehandler, excavator, front end, loader, hand drills	<b>10pm to 7am</b>	Ongoing - 2025
<b>Oversized plant and equipment activities</b>	OSOM, franna, mobile crane	<b>10pm to 7am</b>	Ongoing - 2025
<b>Tree removal on Kent and Lansdowne Road</b>	Crane, light vehicles, traffic management for lane closure on kent road and hand tools.	<b>7am to 6pm</b>	June 2025 – August 2025
<b>SSTOM works – Stabling Maintenance Facility site</b>			
<b>Extended work hours for CSR works</b>	Excavators, day makers, trench roller, light vehicles	<b>6pm to 2am Monday to Friday (inclusive)</b>  <b>1pm to 6pm Saturday.</b> Note: To continue if consented to by the community.	Ongoing - 2025

<b>Concrete pours and finishing works, steel fixing</b>	<b>M&amp;A and OCC Building</b> Generator, light vehicles, concrete pump concrete agitator, daymaker	<b>6pm to 12am and 5am to 7am Monday to Friday</b> <b>6am to 6pm, Saturday</b>	Ongoing - 2025
<b>Extended work hours for use of oversized plant and equipment activities</b>	Traffic management, light and heavy vehicles, generators, lighting towers and mobile cranes.	<b>10pm to 7am</b>	Ongoing - 2025
<b>SSTOM works – Linewide</b>			
<b>Concreting and formwork</b> <b>Oversized deliveries of plant and materials</b> <b>Rail track installations</b> <b>Service utility installations and surveying</b>	Excavators, cranes, dump trucks, water carts, heavy and light site vehicles, generators, traffic management devices, concrete agitators, pneumatic drills, concrete tools and hand tools.	<b>7am Mondays through to 6pm Saturdays (24 hours)</b> <b>7am to 6pm Sundays</b> Note: To continue if consented to by the community.	June 2025 – April 2026

### Feedback:

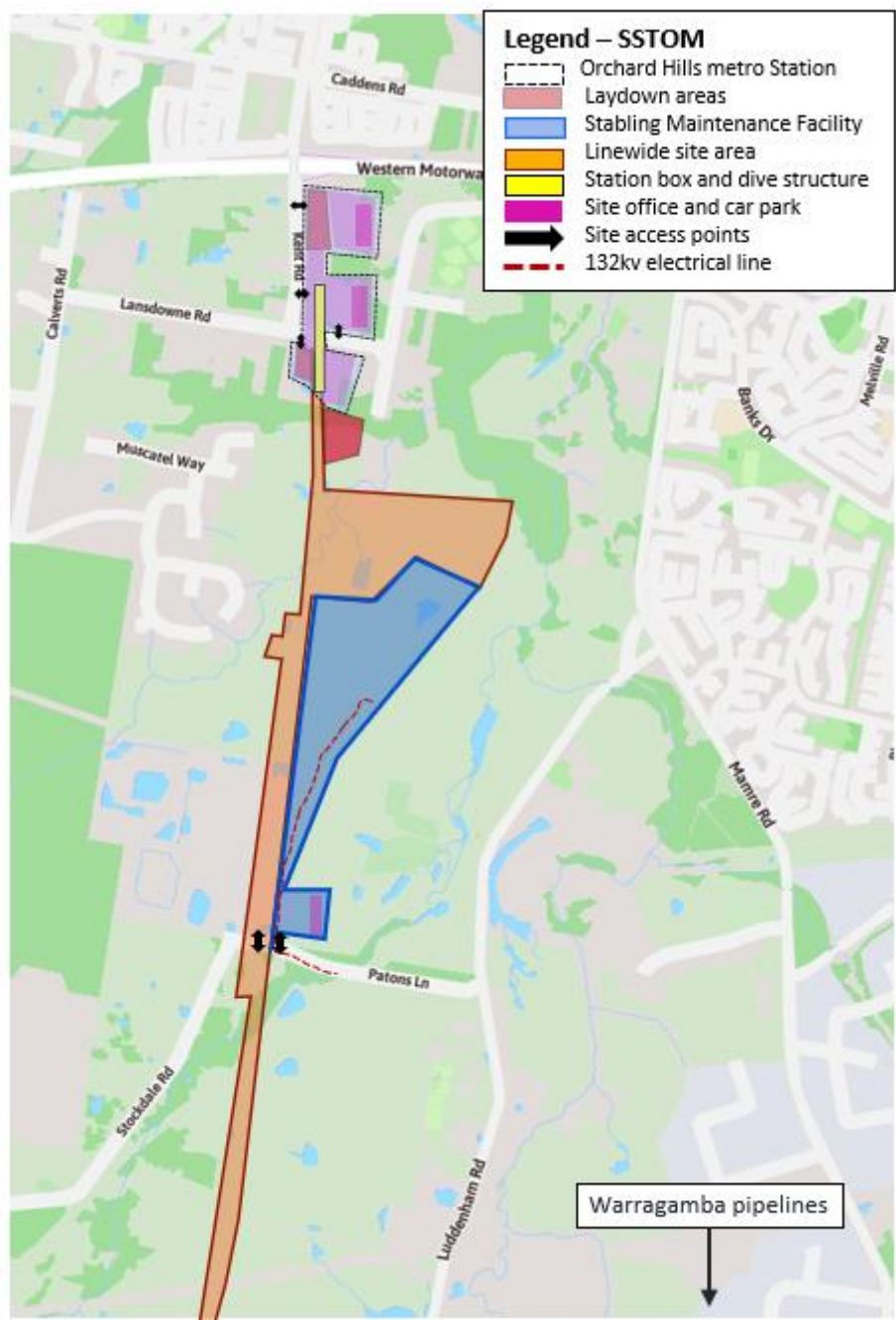
Detailed Noise and Vibration Impact Statements (DNVIS) have been prepared, including proposed mitigation measures based on noise modelling. Your feedback on appropriate respite periods or mitigation measures is encouraged. The SSTOM Community Engagement strategy is online.

Please visit [parklifemetro.com.au](http://parklifemetro.com.au) to view these documents and contact us to provide any feedback.

If you would prefer to receive updates by email, please let us know via [sydneymetrowsa@transport.nsw.gov.au](mailto:sydneymetrowsa@transport.nsw.gov.au) and we will add you to the distribution list.

Thank you for your cooperation while we complete this essential work.

Work areas:



Stay connected through the Sydney Metro Connect App.

Access information in over 100 languages Download Sydney Metro Connect from the App store™ or get it on Google Play™.

For more information contact



24-hour Community Information Line **1800 717 703**



**[sydneymetrowsa@transport.nsw.gov.au](mailto:sydneymetrowsa@transport.nsw.gov.au)**



Sydney Metro – Western Sydney Airport  
PO Box K659, Haymarket NSW 1240



If you need help understanding this information, please contact the Translating and Interpreting Service on **131 450** and ask them to call us on **1800 717 703**.