

[REDACTED]  
Team Leader Compliance – Government Projects  
Department of Planning, Housing and Infrastructure  
Locked Bag 5022  
PARRAMATTA NSW 2124

6 May 2025  
Ref: 170108-ER\_DPHI Apr 2025

Dear [REDACTED]

**RE: Sydney Metro City and South West – ER Monthly Reports for April 2025**

Healthy Buildings International (HBI) submits this report to the Secretary in accordance with:

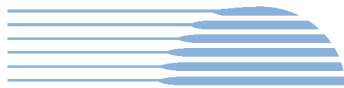
- Condition A26 (j) of the Sydney Metro Sydenham to Bankstown Upgrade SSI\_8256 Approval (12 December 2018) and associated modifications MOD1\_Bankstown Station.

The attached summaries detail the key activities undertaken by Environmental Representatives for Sydney Metro – City and South West Sydenham to Bankstown for the month of **April 2025**.

Yours sincerely

[REDACTED]  
Environmental Representative

Cc: Sydney Metro: [REDACTED]  
AA: Available on Sydney Metro Website  
Contractors: Available to Contractors on Sydney Metro Website  
DPHI Compliance: Portal  
DPHI Post Approvals: Available on Sydney Metro Website



## Table of Contents

1.	Sydenham to Bankstown – TSOM.....	3
2.	Southwest Metro Corridor Package 3 (SWM3) JHLOR .....	4
3.	Errant and Hostile Vehicle Mitigation Treatments (EHVMT) .....	9
4.	Sydney Metro Retained Obligations (SM).....	12
5.	Statement of Limitations .....	13

## 1. Sydenham to Bankstown – TSOM

Project Approval	Contract Package	EPL	Environmental Representative/s
SSI 8256 (S2B)	Train Service Operation and Maintenance (TSOM)	JHLOR EPL 21147 – MTR is working under JHLOR CEMP, and subplans SSI 8256	
<b>Key Construction Activities During the Period</b>			
<ul style="list-style-type: none"> <li>▪ <b>Southwest corridor and stations</b> <ul style="list-style-type: none"> <li>• Installation of field devices</li> <li>• Cable hauling within the station platform buildings</li> <li>• Testing and commissioning of cabinets</li> </ul> </li> </ul>			
<b>Key Construction Activities Look Ahead</b>			
<ul style="list-style-type: none"> <li>▪ <b>Southwest corridor and stations</b> Marrickville, Dulwich Hill, Hurlstone Park, Canterbury, Campsie, Belmore, Lakemba, Wiley Park, Punchbowl and Bankstown Stations: <ul style="list-style-type: none"> <li>• Cable haul to the station platform buildings</li> <li>• Cabinet installation</li> <li>• Cable haul to field equipment devices</li> <li>• Installation of field equipment devices throughout the station and surrounding areas</li> <li>• Termination of cabling to field equipment</li> <li>• Testing and commissioning of cabinets and field equipment</li> </ul> </li> </ul>			
<b>ER Inspections</b>			
<ul style="list-style-type: none"> <li>▪ MTR works including cable pulling were observed by the ER while inspecting SWM3 sites, no issues were raised.</li> </ul>			
<b>Photos</b>			
<ul style="list-style-type: none"> <li>▪ N/A</li> </ul>			
<b>Endorsed Document/s</b>			
<ul style="list-style-type: none"> <li>▪ Nil</li> </ul>			
<b>Non-compliance/ Incidents or Repeat Complaints</b>			
<p>Sydney Metro has been providing summaries of complaints to DPHI daily and a summary to the ER. Responses to each complaint have been noted in each complaint report, with follow up actions often defined in revised reports. Key or repeat items of note are discussed below for the respective projects.</p> <ul style="list-style-type: none"> <li>▪ There were no incidents for TSOM reported to the ER under condition A36 of SSI 8256.</li> <li>▪ No non-compliances were reported to the ER.</li> </ul> <p>Project related complaints:</p> <ul style="list-style-type: none"> <li>▪ Nil</li> </ul> <p>Unrelated Project complaints:</p> <ul style="list-style-type: none"> <li>▪ Nil</li> </ul>			
<b>Audits</b>			
<ul style="list-style-type: none"> <li>▪ No audits</li> </ul>			
<b>Looking Forward – Core Focus Areas</b>			
<ul style="list-style-type: none"> <li>▪ Testing and commissioning between Sydenham and Bankstown</li> </ul>			

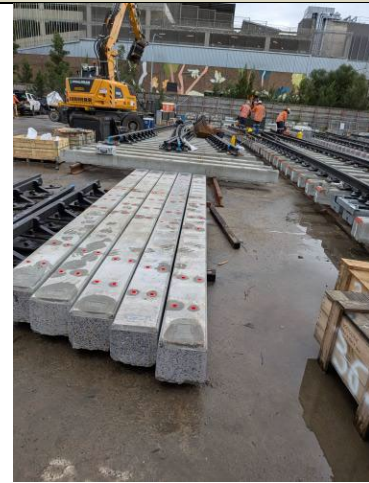
## 2. [Southwest Metro Corridor Package 3 \(SWM3\) JHLOR](#)

Project Approval	Contract Package	EPL	Environmental Representative/s
SSI 8256 (S2B)	Southwest Metro Corridor Package 3 (SWM3) JHLOR	#21147	
<b>Key Construction Activities - During the Period</b>			
<ul style="list-style-type: none"> <li>Project wide: Energisation is now complete</li> <li>Belmore Triangle: Laydown area operations ongoing including material stockpiles and concrete and liquid waste management</li> <li>Canterbury Compound: Site offices and amenities, fuel and gas storage; implementation of the weed management plan</li> <li>North Terrace Compound, Bankstown: Site offices and amenities, fuel and gas storage</li> <li>Punchbowl Station: Platform works ongoing</li> <li>Campsie: Platform works ongoing</li> <li>Marrickville Station: Platform works ongoing</li> <li>Canterbury Station – Platform works ongoing</li> <li>Belmore Station – Platform works ongoing</li> <li>Wiley Park: Ongoing updates to the Tree Report. Platform works ongoing.</li> <li>Bankstown Station: Block work, brick work, roofing installation ongoing on Sydney Metro side building, Sydney Trains side platform works and track turnout installation ongoing, CSR works ongoing.</li> <li>Security fence installation, including ongoing tree impact assessment, pruning, removal and ecologist supervision. Some sections adjacent to Threatened Ecological Communities (TECs) and threatened species, e.g. Breust Street ramp (Punchbowl), Urunga Parade (Punchbowl), South Terrace (Bankstown)</li> <li>Survey of trees in station precincts continued to verify compliance with the SPIR</li> <li>Ongoing operation of site office caravans at selected Metro Services Buildings (MSBs)</li> <li>Stockpile management including waste classification, waste tracking, load-in / load-out, management of site accesses and truck routes</li> </ul>			
<b>Key Construction Activities Look Ahead</b>			
<ul style="list-style-type: none"> <li>Survey and defect inspections at all stations</li> <li>Bankstown Station works including extension and resurfacing of platforms to accommodate 8 car trains and track turnout upgrades on the Sydney Trains side (63 days shutdown from 28 April 2025 to 30 June 2025)</li> <li>Testing and commissioning between Sydenham and Bankstown</li> <li>Platform works at all stations</li> <li>Rail possession activities at Sydney Trains side of Bankstown Station</li> </ul>			
<b>ER Inspections</b>			
<p>There were two ER inspections conducted in the reporting period on 8 April 2025 and 29 April 2025. New actions were raised associated with equipment storage on vegetated embankments, improper storage of dangerous goods and chemicals and weed management, all of which were resolved by the contractor following the inspection.</p>			

## Photos



**Figure 1 – Sydney Steel Rd compound – Plant and equipment storage on vegetated embankment – JHLOR removed these items following the ER inspection.**



**Figure 2 – Sydney Steel Rd compound – Track turnout pre-build ongoing. Turnouts to be transferred to Bankstown using trucks during the 63 days shutdown.**



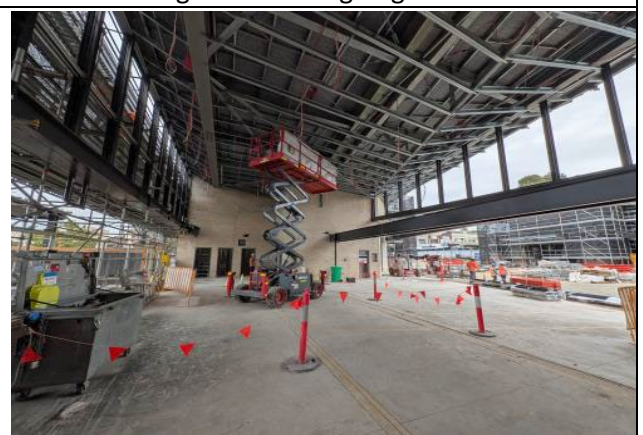
**Figure 3 – Bankstown Station – Testing and commissioning activities ongoing.**



**Figure 4 – Bankstown Station – Testing and commissioning activities ongoing.**



**Figure 5 – Bankstown Station - Laydown area in operation. Ballast cover in place to minimise dust generation. Hardstand area was observed to be dirt free.**



**Figure 6 – Bankstown Station - Scaffold erection with roofing mesh, sarking & flashing completed. Block work (internal walls) and brickwork (external walls) work continues. Internal sheeting ongoing.**





**Figure 7 – Bankstown** - Onsite Detention (OSD) tanks installation excavation ongoing. It is understood that asbestos containing material (ACM) was identified during this excavation which was removed for offsite disposal to a licenced facility



**Figure 8 – Bankstown** - North Tce - sewer works complete and area handed over to council to complete footpath and kerb and gutter works.



**Figure 9 – Bankstown** - Majority of CSR works complete, site has been stabilised with ballast to minimise dust generation



**Figure 10 - Bankstown** - Sydney Trains Station side of Plaza - Structural steel works, block work, brick work continuing



**Figure 11 – Belmore Triangle** - Laydown area in use for material storage and waste stockpile management during 63 shutdown at Bankstown.



**Figure 12 – Belmore Triangle** - Laydown area in use for material storage and waste stockpile management during 63 shutdown at Bankstown.

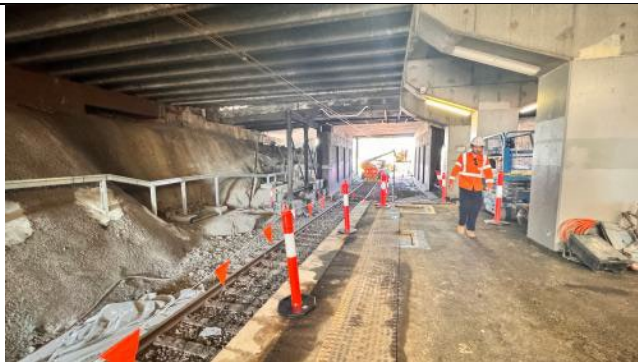




**Figure 13 - Bankstown - Sydney Trains side - 63 days shutdown commenced. Excavation works ongoing**



**Figure 14 - Bankstown - Sydney Trains side - 63 days shutdown commenced. Excavation works ongoing**



**Figure 15 – Bankstown Station - Sydney Trains side - platform resurfacing works underway including saw cutting and removal of existing asphalt/concrete.**



**Figure 16 – Bankstown Station - Sydney Trains side – existing Sydney Trains signage and electrical equipment removed.**

#### Endorsed Document/s

- Minor Ancillary Facility Checklist – Depot PI, Bankstown – Rev 2 – 17 April 2025

#### Non-compliance/ Incidents or Repeat Complaints

Since commencement of City metro services passenger operations on Monday 19 August 2024, Sydney Metro is now providing summaries of CSW complaints on a weekly basis (was provided daily until 16 August 2024) to DPHI and ERs covering complaints related to remaining construction works. Complaints are discussed where relevant for each package below

There was one non-compliance reported to the ER during the period.

- 01/04/2025 - NCR – C7 relating to heritage impact from incorrectly installed junction boxes

There were no incidents reported to the ER under Condition A36 of SSI 8256.

During the period, one Class 3 environmental incident was reported to the ER, which was unrelated to JHLOR. No other Class 3 environmental incidents were reported:

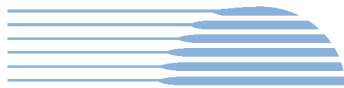
- 17 April 2025 – Hydraulic oil spill from vacuum truck at Marrickville (Sydney Water related works/non-JHLOR activities)

The ER is aware of the following complaints received in April 2025 related to the SWM3 works. The number of noise complaints increased mainly due to rail shutdown possession activities in this reporting period compared to the previous month:

- One complaint related to respite/alternative accommodation offers
- One complaint related to traffic, transport and parking
- One complaint related to worker behaviour
- One complaint related to noise and vibration (OOHW)

#### Audits

No further ER input with regards to SWM3 audit

**Summary of Environmental Performance**

Environmental risks are consistent with out of hours works during possessions and maintaining compliance with the Tree Report during the security fence installation. Actions raised during ER inspections are closed out within the agreed timeframe with useful supporting documentary evidence provided.

**Looking Forward – Core Focus Areas**

- Management of ERSED controls generally
- Management of noise during out-of-hours work during possessions
- Management of tree impacts and TECs during construction of security fencing along the alignment, and maintenance of the buffer zone
- Compliance with the planning approval for the use of land outside the project boundary, including the establishment and use of ancillary facilities





### 3. [Errant and Hostile Vehicle Mitigation Treatments \(EHVMT\)](#)

Project Approval	Contract Package	EPL	Environmental Representative/s
SSI 8256 (S2B)	Errant and Hostile Vehicle Mitigation Treatments (EHVMT) Martinus Rail	No EPL	
<b>Key Construction Activities - During the Period</b>			
<ul style="list-style-type: none"> <li>▪ Illawarra Road - Ongoing footpath excavation and utilities relocation ahead of concrete barrier works</li> <li>▪ Livingstone Road – Form Reo Pour (FRP) works underway</li> <li>▪ Albermarle Street –WE39 girder delivery and placement complete</li> <li>▪ Wardell Road - Traffic Management Plan (TMP) implementation, line marking and road barrier removal</li> <li>▪ Garnett Street - FRP works underway</li> <li>▪ Duntroon Street – Piling works completed</li> <li>▪ Melford Street - All piles excavated, concrete poured and FRP works ongoing</li> <li>▪ Canterbury Road – Footpath works near Canterbury signal hut ongoing, works on overbridge to commence soon, piling works recommenced</li> <li>▪ Loch Street –TMP implementation</li> <li>▪ Burwood Road - Piling works complete, barrier installation works ongoing</li> <li>▪ Moreton Street – Planning for works is ongoing</li> <li>▪ Haldon Street – Site preparation works ongoing</li> <li>▪ King Georges Road - Piling works completed, concrete pouring ongoing</li> <li>▪ Punchbowl Road - TMP Stage 1 implementation, anti-throw screens removal upcoming</li> <li>▪ Stacey St – TMP implementation with stage 2 of hydro demolition works</li> <li>▪ Carnation Ave – Concrete barrier works complete</li> </ul>			
<b>Key Construction Activities Look Ahead</b>			
<ul style="list-style-type: none"> <li>▪ Punchbowl Road, Punchbowl – Removal of steel barriers and concrete pours for the southwest retaining wall</li> <li>▪ Melford St, Hurlstone Park – Installation of off-structure beams (OSB) bridge girders</li> <li>▪ King Georges Road, Wiley Park – Installation of pre-cast barriers</li> <li>▪ Burwood Road, Belmore – Installation of pre-cast barriers</li> <li>▪ Albermarle St, Dulwich Hill – Sydney Trains HV feeder 761 removal, delivery and installation of the off-structure beam, demolition of existing balustrade fence, installation of screens</li> <li>▪ Duntroon St, Hurlstone Park – Lifting of off-structure beams using crane</li> <li>▪ Livingstone Road, Marrickville – Remediation works, service searching</li> <li>▪ Illawarra Road, Marrickville - Reinstatement of existing signal pole and piling</li> <li>▪ Canterbury Road, Canterbury – Overbridge remedial works, service searching and modification of northeast hoarding</li> <li>▪ Loch St, Campsie – Overbridge remedial works and modification of northeast hoarding</li> <li>▪ Haldon St, Lakemba – Piling works on the north side of the rail corridor</li> <li>▪ Punchbowl Rd traffic controls implementation and anti-throw screens removal</li> <li>▪ Haldon St - Piling pad preparation works</li> </ul>			
<b>ER Inspections</b>			
<ul style="list-style-type: none"> <li>▪ ER inspections are undertaken based on scope/risk levels of the activities. One ER inspection was undertaken in the reporting period on 28/04/2025. Two new issues were raised during the inspection including erosion and sediment control at Stacey St overbridge and noise blankets installation at Canterbury Rd overbridge worksite. Both issues were closed shortly following the inspection.</li> </ul>			

## Photos



**Figure 1 – Illawarra Road** – Ongoing footpath excavation and utilities relocation ahead of concrete barrier works, partial footing demolition, once Photo Archival Recording has been completed



**Figure 2 – Stacey St, Bankstown** – North Tce compound - covered stockpiles in place, to be disposed of



**Figure 3 – Stacey St/North Tce compound** - Site compound operating, shade cloth in place around the boundary



**Figure 4 – Stacey St overbridge** - FRP and excavation works underway



**Figure 5 – Punchbowl** - Steel barrier installation complete near The Boulevard. Concrete barrier works underway



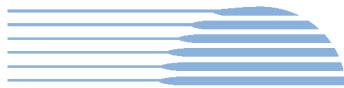
**Figure 6 – Punchbowl** - Concrete barrier works underway



**Figure 7 - Canterbury Road –** Footpath works near Canterbury Signal Hut ongoing, works on overbridge to recommence shortly mainly in the form of remediation works leading up to concrete barrier works

Endorsed Document/s
<ul style="list-style-type: none"> <li>OOHW#16 – Rev B – 17/04/2025</li> <li>OOHW#17 – Rev A – 30/04/2025</li> </ul>
Non-compliance/ Incidents or Repeat Complaints
<p>Since commencement of City metro services passenger operations on Monday 19 August 2024, Sydney Metro is now providing summaries of CSW complaints on a weekly basis (was provided daily until 16 August 2024) to DPHI and ERs covering complaints related to remaining construction works.</p> <p>There was no non-compliance reported to the ER during the reporting period.</p> <p>There were no incidents reported to the ER under Condition A36 of SSI 8256.</p> <p>There was no Class 3 environmental incidents reported to the ER during the reporting period.</p> <p>ER is aware of the following complaints received during the reporting period. The number of noise related complaints increased compared to the previous month due to OOHW activities increasing:</p> <ul style="list-style-type: none"> <li>Five complaints related to standard construction hours/out-of-hours noise</li> <li>One related to business impacts</li> <li>One related to traffic, transport and parking</li> </ul>
Audits
No ER involvement in audit activity including Independent Environmental Audits.
Looking Forward – Core Focus Areas
<ul style="list-style-type: none"> <li>Management of erosion and sediment controls generally</li> <li>Management of noise and dust during out-of-hours works</li> <li>Management and protection of retained heritage items</li> <li>Management of TECs</li> </ul>





#### 4. [Sydney Metro Retained Obligations \(SM\)](#)

Project Approval	Contract Package	EPL	Environmental Representative/s
SSI 8256 (S2B)	Sydney Metro Retained Obligations (SM)	Not applicable	
Key Construction and other Activities			
SM	▪ Working with MTR for various dynamic testing related activities for Southwest		
ER Inspections			
	▪ Nil		
Endorsed Document/s			
SM	▪ Nil		
Non-compliance/ Incidents or Repeat Complaints			
<p>Since commencement of FPS, Sydney Metro now provides summaries of CSW complaints on a weekly basis to DPHI and ERs covering complaints related to remaining construction works. Key or repeat items of note are discussed below for the respective projects, where applicable or under respective CSW packages.</p> <ul style="list-style-type: none"><li>▪ No incidents were reported to the ER during the reporting period.</li></ul> <p>One non-compliance reported to the ER during the reporting period:</p> <ul style="list-style-type: none"><li>▪ 08/04/2025 – E48 (Not preparing a Temporary Transport Management Plan (TTMP) 1 month prior to its implementation)</li></ul>			
Audits			
SM	Nil		
Looking Forward – Core Focus Areas			
SM	Collaborating with MTR and MTS to ensure the required documents are ready for Dynamic Testing and the First Passenger Service.		

## 5. Statement of Limitations

Healthy Buildings International (HBI) has prepared this report in accordance with the requirements of Condition A24(l) of the Sydney Metro Condition A26(j) of the Sydney Metro Conditions of Approval (CSSI 17\_8256). The report is for the sole purposes of Department of Planning, Housing and Infrastructure (DPHI) and Sydney Metro. It has been prepared based on generally accepted practices and standards at the time it was prepared. No other warranty, expressed or implied, is made as to the professional advice included in this Report. This report did not assess any aspects relating to safety.

Where the Report indicates that information has been provided to HBI by third parties, HBI assumes no liability for any inaccuracies in or omissions to that information.

This Report was prepared based on the conditions encountered and information reviewed for the period of reporting. HBI disclaims responsibility for any changes that may have occurred after this time.

This Report should be read in full. No responsibility is accepted for use of any part of this report in any other context or for any other purpose or by third parties. This Report does not purport to give legal advice. Legal advice can only be given by qualified legal practitioners.

Except as required by law, no third party may use or rely on this Report unless otherwise agreed by HBI in writing. Except as specifically stated in this section, HBI does not authorise the use or findings of this Report by any third party.

To the extent permitted by law, HBI expressly disclaims and excludes liability for any loss, damage, cost or expenses suffered by any third party relating to or resulting from the use of, or reliance on, any information contained in this Report. HBI does not admit that any action, liability, or claim may exist or be available to any third party.