

Notification – Orchard Hills Metro Station and the Stabling and Maintenance Facility

Sydney Metro is Australia’s biggest transport project.

September 2024

Sydney Metro – Western Sydney Airport is the new metro railway line which will service Greater Western Sydney and the new Western Sydney International (Nancy-Bird Walton) Airport. A city-shaping project, the new 23-kilometre metro railway will connect Bradfield city centre with St Marys in the north – where customers can connect to the existing Sydney Trains suburban T1 Western Line. The NSW and Australian governments have a shared objective of having Sydney Metro – Western Sydney Airport operational when the airport opens for passenger services.

CPB Contractors and United Infrastructure are delivering the Surface and Civil Alignment (SCAW) works. CPB Contractors Ghella are delivering Station Boxes and Tunnelling (SBT) and Parklife Metro consortium are delivering the Stations, Systems, Trains, Operations and Maintenance (SSTOM) works. See the list below for the work activities at Orchard Hills during September. See maps for the work locations.

Stations, Systems, Trains, Operations and Maintenance works include:

Orchard Hills Metro Station:

- excavations, waterproofing, formwork, steel fixing and concrete pours inside the station box to construct the base and walls of the station, and drainage pits
- constructing a concrete batching plant on the eastern end of the site, which will provide concrete services to multiple SSTOM sites and locations
- surveying and geotechnical investigations, including potholing, non-destructive digging and testing along local surrounding roads to inform utility designs.

Stabling and Maintenance Facility:

- major earthworks at the Stabling and Maintenance Facility site, including importing materials, excavations and compacting for the rail areas, and substation and operations control centre buildings
- construction of a new 132kV powerline at the Stabling and Maintenance Facility site, commencing from the future substation area, working towards Patons Lane
- major drainage works, including excavations, installing pits and pipes, and backfilling at the Stabling and Maintenance Facility site.

Surface and Civil Alignment works include:

- minor work continues at the access road off Lansdowne Road
- deliveries, placement, and installation of concrete Parapets north of the Warragamba pipelines
- ongoing surface formation and earthworks for the track alignment between Lansdowne Road and the Pipelines
- import and export of excess spoil for the track alignment at Patons Lane
- removal of the viaduct crane pad at Unnamed Creek
- construction of viaduct abutments (on/off ramps) north of the Warragamba pipelines, Unnamed Creek and Patons Lane
- finishing works including topsoiling, landscaping and installation of open drains and fencing, continue
- fortnightly aerial land surveys and site photography of the surface alignment.

Station Boxes and Tunnelling works include:

- site wide concrete works, including formwork, steel fixing for various structures
- operation of a water treatment plant
- delivering and removing plant and equipment
- spoil transfer, crane operations and maintenance
- construction of permanent structures
- ongoing cross passage construction works inside the tunnels
- site photography using drone cameras above the construction site.

Out-of-hours work activity includes:

- deliveries of over-sized equipment and machinery and materials to the Orchard Hills metro station and the Stabling Maintenance Facility sites
- extended work hours for excavation, steel fixing, concrete pours and concrete finishing works inside the station box at the Orchard Hills site and the substation site at the SMF
- dewatering activities at the Orchard Hills and Stabling Maintenance Facility sites
- extended work hours for major earthworks at the Stabling Maintenance Facility site
- concrete batching plant operations at the Orchard Hills metro station site.

Work hours:

Standard construction hours are **Monday to Friday from 7am to 6pm** and **Saturdays from 8am to 1pm**.

Activities associated with tunnelling operate **24 hours a day, 7 days per week**.

Some work will also be required to take place outside our standard construction hours to minimise traffic impacts or to ensure the safety of pedestrians, motorists and our workers. Out-of-hours work activities will be carried out in line with the project Environmental Protection Licence, Road Occupancy Licences, and Transport for NSW requirements.

Impacted surrounding residents and businesses will be notified in advance of any out-of-hours work.

What to expect:

- mitigation measures will be in place to minimise impacts including installing noise blankets, where feasible, respite periods during high noise activities, noise and vibration monitoring, and water carts for dust suppression
- increased light and heavy vehicle movements on surrounding roads, and local road closures. All vehicles will be turned off when not in use, non-tonal reversing alarms will be fitted to plant and machinery and trucks will avoid reversing into and on site, where feasible
- temporary lighting to ensure a safe worksite will be directed away from properties
- communication will be limited to radios only when moving and unloading equipment, with no use of horns or loud radios
- traffic control and signage to safely assist motorists, pedestrians, and cyclists.

Equipment used:

Equipment used will include, but is not limited to, excavators, cranes, dozers, graders, rollers, vacuum truck, water carts, heavy and light site vehicles, generators, survey equipment, traffic management devices, concrete agitators, pneumatic drills, concrete saws, bobcats, chainsaws, telehandler and powered hand tools.

Changes to traffic, pedestrian, and cyclist routes:

During these works, traffic control will be in place to assist motorists, pedestrians, and cyclists with any changes to traffic conditions. This may include contraflow and stop-slow traffic controls. The time of these changes will vary and are dependent on road authority approvals.

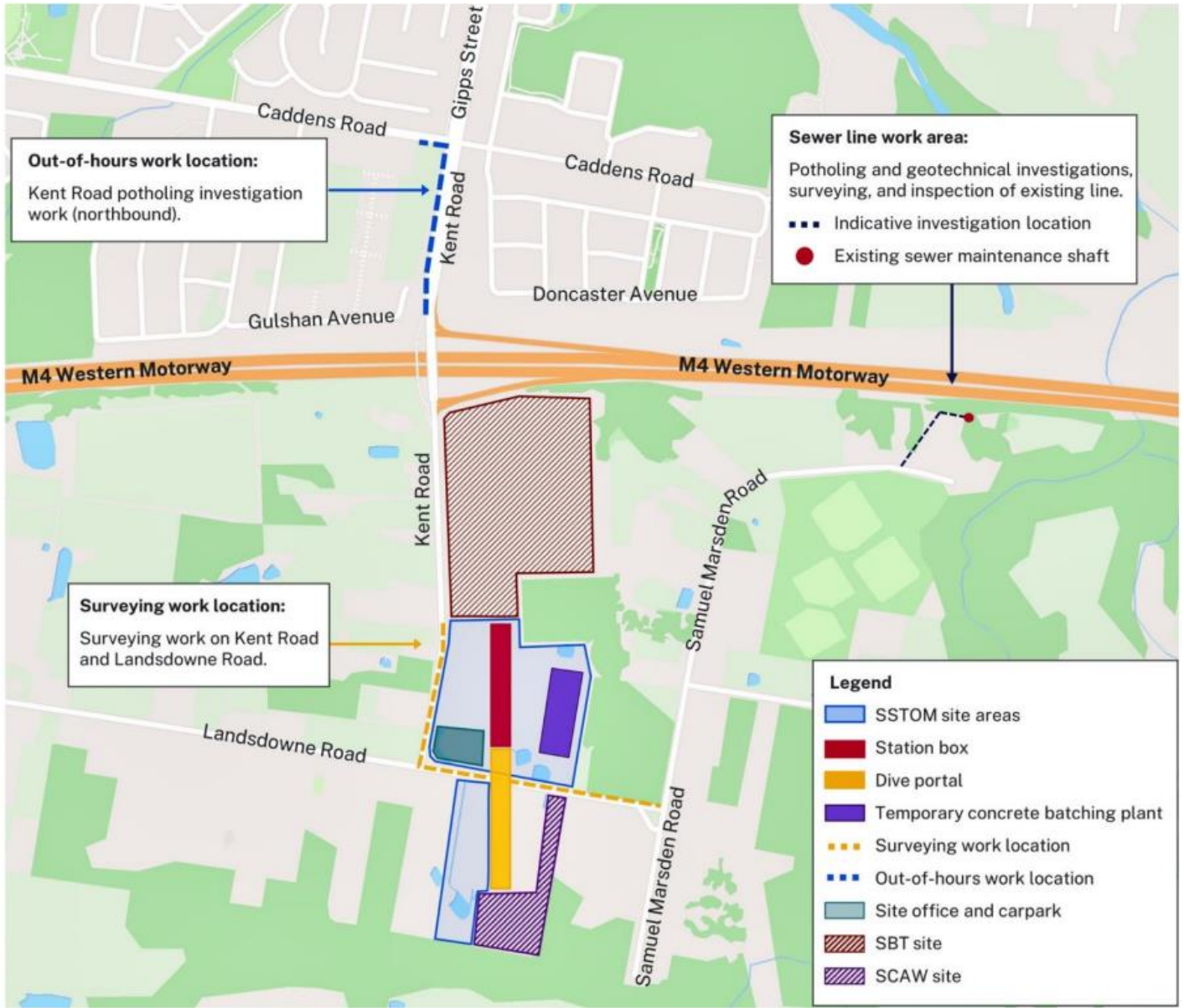
Access to driveways and buildings will be maintained at all times. Residents will be separately notified if access to driveways will be affected, or access to private property is required.

Three monthly out-of-hours lookahead activities:

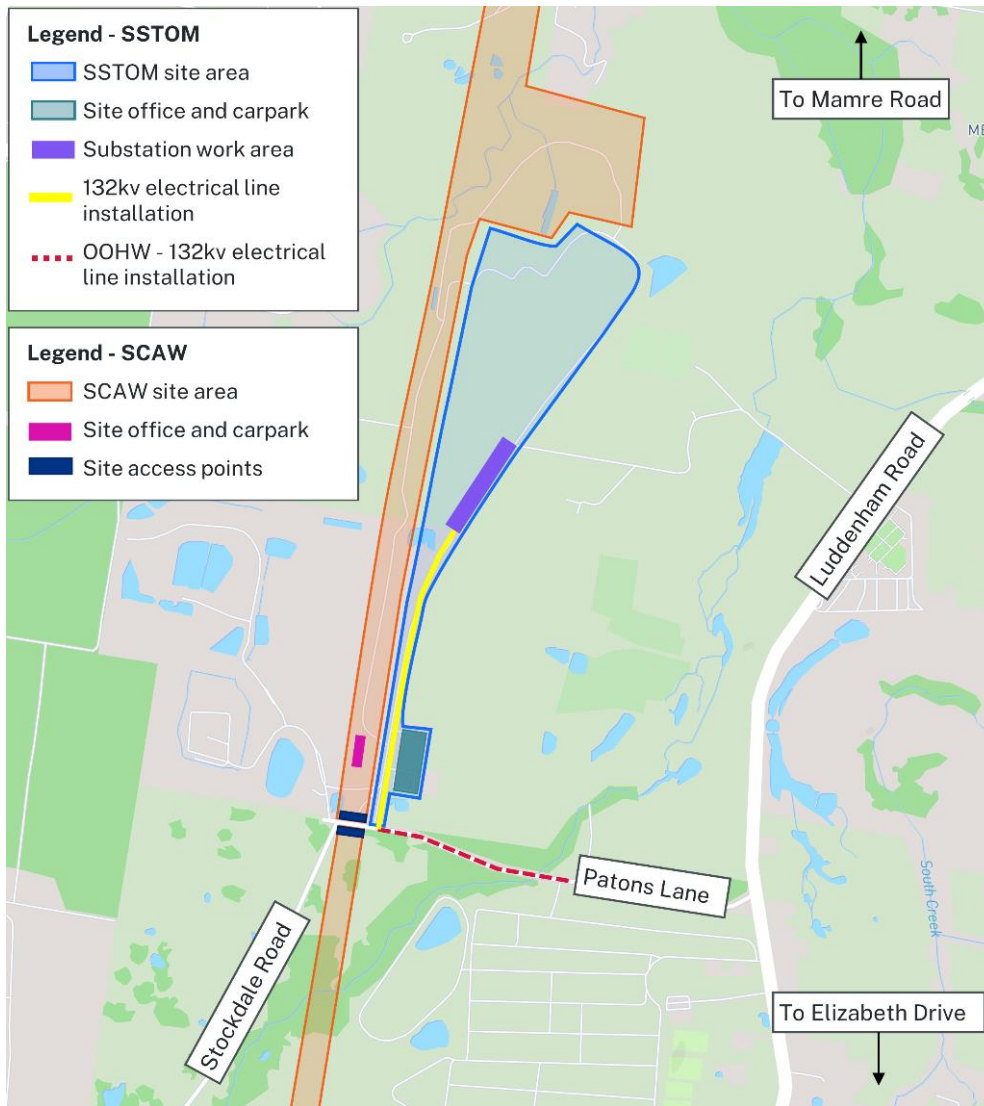
Activity	Equipment	Work hours	Timing
SSTOM works – Orchard Hills Metro Station site			
Concrete pours and finishing works station box base slab and walls	Concrete pump, vibrators, concrete trucks, generators, and lighting towers.	6pm to 12pm, Monday to Friday 1pm to 6pm, Saturdays	Ongoing - 2024
Concrete batching plant operations	Concrete trucks, generators, mixers, compressors and lighting towers.	24 hours a day, seven days a week	September 2024 – 2026
Oversized plant and equipment activities	Traffic management, light and heavy vehicles, generators, lighting towers and mobile cranes.	10pm to 7am	Ongoing
Dewatering activities	Water treatment plant, water pumps, light vehicles, generators and lighting towers.	As required	Ongoing
Caddens and Kent Road potholing and utility investigation activities	Traffic management, light and heavy vehicles, generators, lighting towers and mobile cranes.	6pm – 6am, Tuesday 17 September or Wednesday 18 September	September 2024
SSTOM works – Stabling Maintenance Facility site			
Extended work hours for major earthworks	Excavators, dump trucks, graders, compactors, drum rollers, dozers, trucks, generators and lighting towers.	6am to 7am, Monday to Friday 1pm to 4pm, Saturdays	August–October 2024
Concrete pours and finishing works, steel fixing	Concrete pump, vibrators, concrete trucks, generators, and lighting towers.	6pm to 12pm, Monday to Friday 1pm to 6pm, Saturdays ,	Ongoing - 2024
Long weekend possession - 132kv power supply installation on Patons Lane	Excavators, trucks, mobile cranes, compactors, vibrators, generators, and lighting towers.	6pm, Friday 4 October to 6pm, Tuesday 8 October 2024	October 2024 (October long weekend)
Dewatering activities	Water treatment plant, water pumps, light vehicles, generators and lighting towers.	As required	Ongoing
SBT works – Orchard Hills			
Excavation, concrete pours, steel fixing and removal of materials/equipment inside the station box	Excavators with hammer, mobile crane (telehandler), gantry crane, heavy and light vehicles, lighting tower and powered hand tools including (small hand and circular saws, drills, impact drivers, grinders).	6pm to 7am, Monday to Friday 1pm to 10pm, Saturdays and 8am to 6pm, Sundays	Ongoing – December 2024
SCAW works – Orchard Hills			

Earthworks at Unnamed Creek	Light and heavy vehicles, heavy machinery, generators and lighting towers	6pm to 7am Monday to Friday	October - December 2024
-----------------------------	---	--------------------------------	-------------------------

Orchard Hills metro station work location:



Stabling Maintenance Facility work location:



Feedback:

Detailed Noise and Vibration Impact Statements (DNVIS) have been prepared, including proposed mitigation measures based on noise modelling. Your feedback on appropriate respite periods or mitigation measures is encouraged.

If you would prefer to receive updates by email, please let us know via sydneymetrowsa@transport.nsw.gov.au and we will add you to the distribution list.

Thank you for your cooperation while we complete this essential work.



Sydney Metro has launched Sydney Metro Connect – a new way to stay informed.

Access information in over 100 languages Download **Sydney Metro Connect** from the App store™ or get it on Google Play™.

For more information contact



24-hour Community Information Line **1800 717 703**



sydneymetrowsa@transport.nsw.gov.au



Sydney Metro – Western Sydney Airport
PO Box K659, Haymarket NSW 1240



If you need help understanding this information, please contact the Translating and Interpreting Service on **131 450** and ask them to call us on **1800 717 703**.