

Notification – Waterloo Station

July 2024

Sydney Metro is Australia’s biggest public transport project.

Services started in May 2019 in the city’s North West with a train every four minutes in the peak. Metro rail will be extended into the CBD in 2024, with new metro railway stations at Crows Nest, Victoria Cross, Barangaroo, Martin Place, Gadigal and Waterloo and new metro platforms at Central, and then onto Bankstown in 2025.

The new Waterloo integrated station development includes construction of the new Waterloo metro station by John Holland, while a joint venture between John Holland and Mirvac will deliver the Waterloo Metro Quarter, including buildings above and next to the station.

Weekend road closure on Raglan Street

A full road closure on Raglan Street, between Botany Road and Cooper Street will commence on **7.00am, Saturday 13 July 2024 until 5.00am Monday 15 July 2024**. All bus routes will be maintained on Raglan Street, and bus stops will remain open.

The closure of this road is necessary to carry out water upgrade works and civil works on Raglan Street to construct the new intersection. These works involve the preparation and construction of a new water culvert specifically for Sydney Water.

Please refer to the map over the page for more information on the changes and parking removal.

What to expect

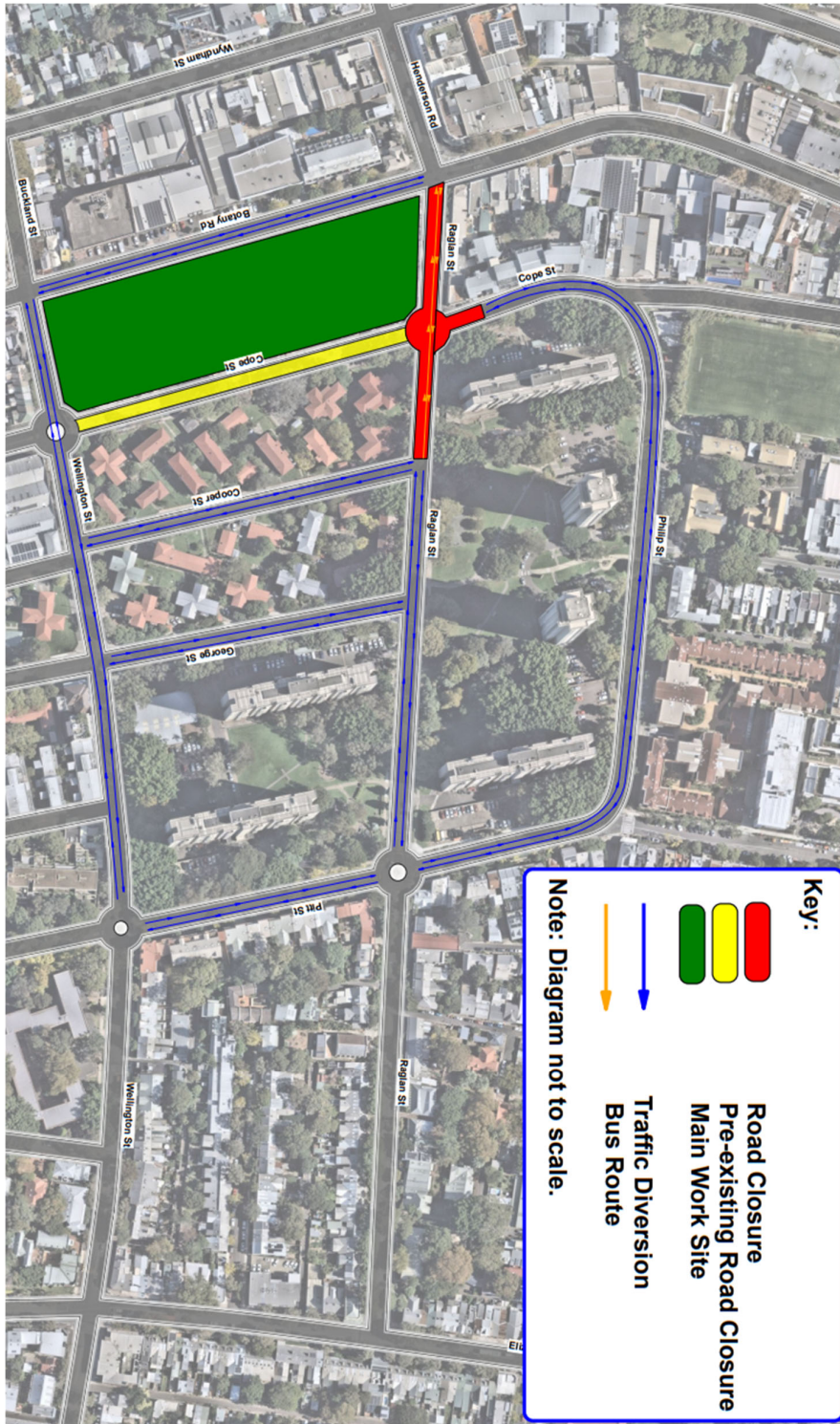
- Machinery used during this work will include an asphalt paver, rollers, road profiler, concrete trucks, excavators, trucks and construction vehicles, generators, concrete saw, lighting towers, hand, and power tools.
- Temporary traffic changes will be in place for the safety of workers and the community during this work, including reduced speed limits, footpath and lane closures.
- Due to the nature of the work, nearby residents may hear noise and feel vibration from some of the work. The project team will limit these impacts wherever possible. A range of mitigation measures are in place including, turning off equipment when not in use and, where possible, equipping machinery with non-tonal movement alarms. For high impact work such as hammering, there will also be respite periods of one hour following three hours of work.

If you have any questions, please contact Leanna Fuller on 1800 171 386 or email waterloometro@transport.nsw.gov.au

Thank you for your patience while we undertake these necessary works.



Detour Map



Contact us

24-hour Community Information Line **1800 171 386**

sydneymetro@transport.nsw.gov.au

Sydney Metro City & Southwest, PO Box K659,
Haymarket NSW 1240



Translating and interpreting service

If you need help understanding this information, please contact the Translating and Interpreting Service on **131 450** and ask them to call us on **1800 171 386**