

Senior Compliance Officer – Government Projects
Department of Planning, Housing and Infrastructure
Locked Bag 5022
PARRAMATTA NSW 2124

5 July 2024

Ref:201209-ER_DPHI-June 2024

Dear |

RE: Sydney Metro - Sydney Metro Western Sydney Airport SSI 10051 – ER Monthly Report for June 2024

Healthy Buildings International (HBI) submits this report to the Secretary in accordance with:

- Condition A32 (k) of the Sydney Metro Western Sydney Airport, SSI 10051 Approval (23 July 2021)

The attached summary details the key activities undertaken by Environmental Representatives for Sydney Metro Western Sydney Airport for the month of June 2024.

Yours sincerely

Environmental Representative

Cc:

Sydney Metro:

DPHI: Major Projects Portal


Enclosed: ER Endorsement of Staging Report R10 220524



Table of Contents

1.	Advanced and Enabling Works (AEW).....	3
2.	Station Boxes and Tunnelling (SBT).....	6
3.	Surface and Civil Alignment Works (SCAW).....	12
4.	Stations, Systems, Trains, Operations and Maintenance Package (SSTOM)	16
5.	Statement of Limitations.....	20

1. Advanced and Enabling Works (AEW)

Contract Package	Environmental Representative/s
Advanced and Enabling Works (AEW)	
Key Construction Activities During the Period	
<ul style="list-style-type: none"> ▪ St Marys Footbridge (FSM): <ul style="list-style-type: none"> ○ Piling works on platforms ½ and 3/4 ○ Stockpiling material in the main compound ○ Asphaltting disturbed ground ○ Preparing for concrete pours 	
Key Construction Activities Look Ahead	
<p>The Construction activities planned for the upcoming period for the Advanced Enabling Works (AEW) comprise of:</p> <ul style="list-style-type: none"> ▪ St Marys Footbridge: <ul style="list-style-type: none"> ○ Continuation of piling works ○ Material loadout ○ Concrete pours 	
ER Inspections	
<p>There were two (2) inspections of the St Marys Station Footbridge contract undertaken by Mr [REDACTED] in June 2024.</p> <p>Key points/ issues raised during the inspections were as follows:</p> <ul style="list-style-type: none"> ○ Sediment excavated within the platform was tightly controlled with the hoarding sealed to prevent water exiting the work area ○ All ERSED controls observed were in good condition and appeared to be recently maintained ○ Water collected from the piles is pumped to a water cart in the compound for disposal at an offsite WTP ○ The project ECMs needed to be updated to reflect the current site arrangement and controls ○ The compound was observed to be neat and tidy ahead of the programmed concrete pours ○ The DSI for AEC1 needs to be completed to either enact E93-97 or REMM SC2 	
Photos	
St Marys Footbridge	
	
Compound - Stockpiled material has been covered and barricaded off until receipt of the waste classification testing	Compound - The internal road is in good condition and free of dirt



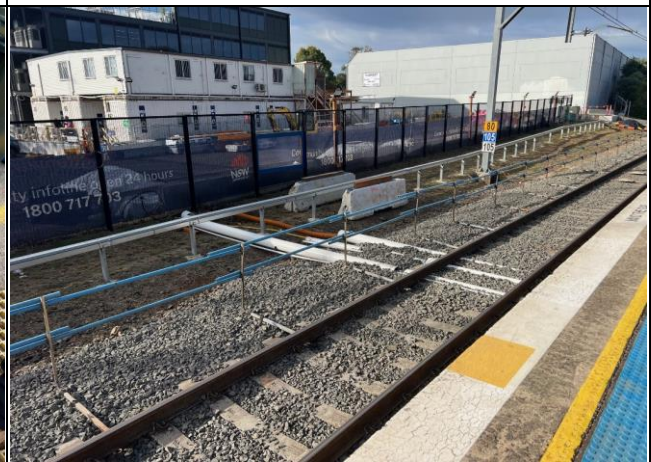
Compound - The ballast accessway is clean and extends from edge to edge, reducing the mud tracking risk



Platform 1/2 - Hoarding has erected on the platform sealed at the base to prevent water from running onto the public standing area



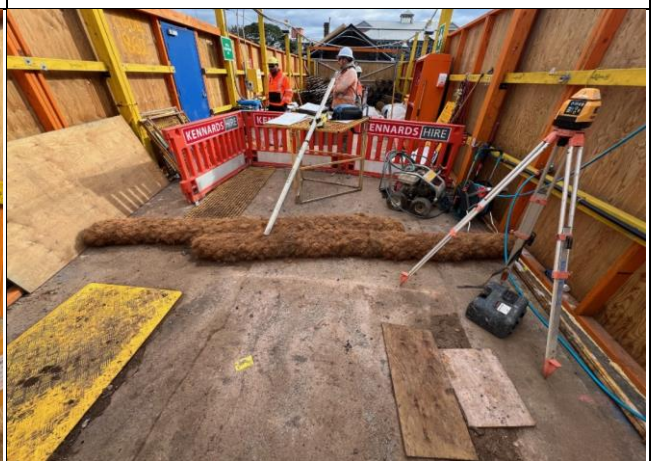
Platform 1/2 & 3/4 - A coir log has been used to control runoff adjacent to the main access door



Platform 1/2 - Pipes have been installed under the tracks to pump out water and pumped in concrete



Platform 1/2 & 3/4 - Machinery within the hoarding until at least September 2024 refuelled with jerry cans



Platform 1/2 & 3/4 - Coir logs are used within the hoarding to break up sections of works

Endorsed Document/s

The following documents were endorsed/approved by the ER (Mr [REDACTED])

- Nil this period

The following documents were provided for information or reviewed with comments provided to Sydney Metro.

- Nil this period

Complaints / Incidents / Non-compliance

No non-compliances were reported to or identified by the ER for the period.

No incidents were reported to the ER in June 2024:

No complaints were received during the period.

Audits (specific to packages reported in this report)

Nil this period

Looking Forward – Core Focus Areas

Works are now being undertaken as per E38 as the hoarding delineates the works and public access. Unexpected finds continue to be discovered during piling works and the unexpected finds protocol is being followed. Further out of hours works is not expected to be undertaken until August 2024.

ER Closing Comments:

The HVLR is going through its final reviews prior to submission to DPHI. The addition of senior resources has seen a positive difference in the resolution of issues and the general housekeeping. Issues still prevalent and are inspected include:

- Mud tracking
- Noise
- Heritage impacts
- Interaction with members of the community

2. Station Boxes and Tunnelling (SBT)

Contract Package	Environmental Representative/s
Station Boxes and Tunnelling (SBT)	
Key Construction Activities During the Period	
<ul style="list-style-type: none"> ▪ St Marys: <ul style="list-style-type: none"> ○ TBM 1 retrieval activities and transport offsite continued ○ TBM 2 breakthrough on the 20th ○ Commenced TBM 2 retrieval activities and transport offsite ▪ Claremont Meadows Services Facility: <ul style="list-style-type: none"> ○ Water treatment plant operating. ○ Storage of surplus construction materials from other northern sites ○ Cross passage ramp soil storage and delivery ○ Tunnel segment transfer from Orchard Hills and craneage into shaft completed ○ Concrete deliveries to tunnel ▪ Orchard Hills: <ul style="list-style-type: none"> ○ Spoil and topsoil storage. ○ Operation and maintenance of ERSED controls. ○ Pre-cast tunnel segment storage in the north completed. ○ TBM tunnelling is now complete ○ Tunnel segment delivery completed ○ Processing and storage of tunnel spoil completed. ○ Tunnel Spoil haulage offsite completed ○ Cross passage ramp spoil removal ○ Tunnel support gantry demolition commenced ○ Grout plant operation. ○ Water treatment plant operation and disposal to trade waste at Claremont Meadows. ▪ Aerotropolis: <ul style="list-style-type: none"> ○ TBM 4 breakthrough ○ TBM 3 and TBM 4 retrieval activities and transport offsite ▪ Bringelly Services Facility: <ul style="list-style-type: none"> ○ Storage of surplus construction materials from other southern sites. ○ Cross passage ramp soil delivery and removal. ○ Concrete deliveries to tunnel 	
Key Construction Activities Look Ahead	
<ul style="list-style-type: none"> ▪ St Marys: <ul style="list-style-type: none"> ○ TBM 1 and TBM 2 retrieval and transport offsite ○ Tower crane demobilisation ▪ Claremont Meadows Services Facility: <ul style="list-style-type: none"> ○ Continue erosion and sediment controls operation and maintenance. ○ Continue Water Treatment Plant operation and maintenance. ○ Storage of surplus construction materials from other northern sites. 	

- Concrete deliveries outside Construction Hours.
- Orchard Hills:
 - Disposal of surplus topsoil stockpile offsite.
 - Portal works
 - Site demobilisation
 - Earthworks and drainage for handover to SSTOM
- Aerotropolis:
 - TBM 3 and TBM 4 retrieval and transport offsite
 - Tower crane demobilisation
 - Site demobilisation
- Bringelly Services Facility:
 - Continue Erosion sediment controls operation and maintenance.
 - Tunnelling support activities (concrete deliveries and cross passage spoil removal).

ER Inspections

There were two (2) routine ER Inspections conducted on 6/6/24 and 20/6/24 by Mr [REDACTED]. One Out of Hours Works (OOHW) Inspection was conducted at Claremont Meadows and St Marys on 20/6/24 targeting tunnel support activities, and TBM offsite transport respectively.

Key points/ issues raised during the inspections were as follows:

- Most actions from previous inspections have been closed, and the sites have coped well with considerable rain over the period.
- Sites were generally well managed with only routine minor maintenance/repairs and housekeeping required throughout.
- At Bringelly, despite considerable street sweeper use, appreciable tracking was noted onto Derwent Rd as a result of tracking from an unsealed laydown/loading area west of the shaft onto sealed internal haul roads. CPBG is in the process of removing soil accumulations from sealed internal haul roads and cover the laydown/loading area with a stable (DGB/roadbase) material, and wheel washing is being implemented within the concrete apron.
- Effective noise mitigation measures have been installed competently at both St Marys, and Claremont Meadows and Bringelly facilities.
- OOHW construction activities at Claremont Meadows were no audible nor measurable above ambient noise during the inspection.

ER inspections are on a fortnightly cycle.

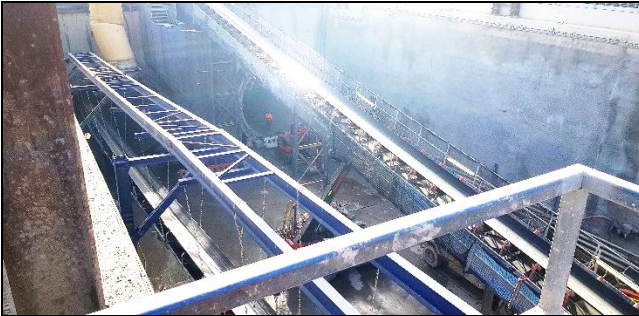
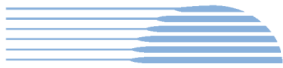
Photos



Orchard Hills – North eastern segment storage yard with eastern topsoil stockpile for disposal in background



Kent road at site access - Minor tracking between watercart/sweeper runs addresssed immediately.



Orchard Hills tunnel portal – Tunnel support activities significantly reduced.



Orchard Hills Northern boundary– Sediment fence required repairs.



Orchard Hills south view east – Cleanup following sump overflow to surrounding concrete during wet weather.



Claremont Meadows shaft view north – Final delivery and tunnel segment craning into shaft.



Claremont Meadows north, view west – Tunnel segment storage area.



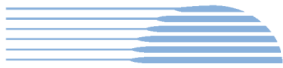
Claremont Meadows shaft view northeast – Concrete delivery drop-pipe.



Claremont Meadows view northwest – Concrete deliveries ramp to drop-pipe.



Claremont Meadows view northwest – View from site sheds to concrete deliveries ramp.



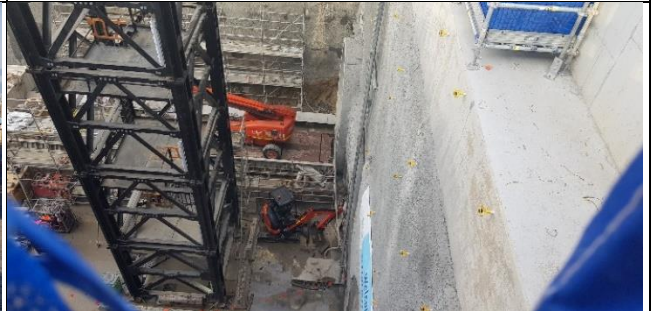
Claremont Meadows shaft, view north – Shaft activities with one air extraction/spoil conveyor system left.



Claremont Meadows – Minor tracking noted on Gipps Rd. at southern site access.



St Marys view southwest from Philip St at Gidley St– Negligible tracking observed from Gidley St access.



St Marys – TBM1 Bridge and Gantries retrieval preparations, and TBM2 breakthrough preparations .



St Marys view south east – TBM Bridge lift to TBI area.



St Marys Gidley St view north– Gidley St in good condition .



St Marys south side of Station St view east– erosion and sediment control measures significantly improved.



Bringelly facility – Weeding completed.



Bringelly – Soil accumulations on sealed internal haul roads.



Bringelly – Considerable tracking noted at Derwent Rd exit.



Aerotropolis view east – TBM retrieval and dismantling staging area with cutter head (left) and shield (right).



Aerotropolis view south east – TBM shield preparation for transport.



Aerotropolis view west– TBM cutter head preparation for transport.



Aerotropolis Station Box north– TBM 4 shield at top of photo with preparation for TBM 3 bridge and gantries retrieval at the bottom of the photo. SSTOM FRP right

Endorsed Document/s

No documents were endorsed/approved by the ER.

The following documents were provided for information or review as applicable:

- Groundwater Monitoring Program Rev03 of 29/05/24
- Sydney Metro Western Sydney Airport – Bringelly Tunnelling Support Activities Environmental Review
- May Monthly Monitoring Reports comprising Dust (real-time), Noise and Surface Water.
- Sydney Metro Western Sydney Airport Station Boxes and Tunnelling Works Six monthly Surface Water Monitoring Report -October 10 2023 to April 10 2024
- Sydney Metro Western Sydney Airport Station Boxes and Tunnelling Works Six monthly Noise and Vibration Monitoring Report -November 2023 to April 2024
- CoA E95 - St Marys Reactive Barrier Monitoring Report 9 dated 28/05/24
- CoA E95 - Orchard Hills SSTOM Validation Report dated 12/4/24

Complaints / Incidents / Non-compliance
<p>There were no Non-Compliances with the Approval raised by or reported to the ER this period There were no incidents of note identified by or reported to the ER this period.</p> <p>Six (6) complaints were reported to the ER, which represents a considerable reduction from previous months:</p> <ul style="list-style-type: none"> ▪ One (1) from St Marys related to noise. ▪ Two (2), from Orchard Hills, related to noise and light. ▪ One (1) related to the condition of Kent Rd (tracking). Residents reportedly satisfied with being given car wash vouchers. ▪ One (1) related to traffic (compression braking and speeding) on Kent Rd. at Orchard Hills. ▪ One (1) related to air quality (dust) at Bringelly. <p>The complaints above are under investigation or review by Sydney Metro and CPBG, as detailed in the register.</p>
Audits (specific to packages reported in this report)
<ul style="list-style-type: none"> ▪ Nil this period
Looking Forward – Core Focus Areas
<p>Risks now relate to tunnel support activities at Bringelly, and TBM OSOM pick-up and transport at St Marys. Of note are:</p> <ul style="list-style-type: none"> ▪ OOH noise management at Bringelly for concrete pumping activities into shaft ▪ OOH noise from disassembly/rigging activities on the surface and traffic management during TBM retrieval works and TBM OSOM pick-up via Queen St at St Marys <p>ER Closing Comments: The contractor continues to apply good environmental management practices and is proactive in planning of works to limit environmental impacts.</p>

3. Surface and Civil Alignment Works (SCAW)

Contract Package	Environmental Representative/s
Surface and Civil Alignment Works (SCAW)	
Key Construction Activities During the Period	
<ul style="list-style-type: none"> ▪ Patons Lane <ul style="list-style-type: none"> ○ Sandstone import over northern tributary stream culvert is complete, finishing works continue ○ Weed spraying continuing ○ Viaduct across Patons Lane is complete ○ Hydromulching activities are ongoing ▪ SMF <ul style="list-style-type: none"> ○ Drainage works from SSTOM to SCAW ○ Additional geotechnical unsuitable material is being added to PS105 ▪ Defence Land <ul style="list-style-type: none"> ○ Drainage works ongoing ○ Fill placement towards the Warragamba pipeline ○ Viaduct segments are being installed on the viaduct ▪ Luddenham Station <ul style="list-style-type: none"> ○ Construction of Luddenham Rd roundabout is complete except for the wearing course ○ Structural station works continue. ○ Preparation for viaduct segments between and over the Warragamba pipeline ▪ Luddenham Road South <ul style="list-style-type: none"> ○ Grading of the alignment ahead of sealing ○ Finishing earthworks and revegetation ▪ M12 to Cosgrove's Creek <ul style="list-style-type: none"> ○ The alignment has been sealed south of Cosgrove's Creek. ○ Viaduct is complete across Cosgrove's Creek ▪ Elizabeth Drive <ul style="list-style-type: none"> ○ Sandstone delivery is complete south of Elizabeth Drive and placement is ongoing ○ Drainage arrangements are in place to cater for M12 discharge water 	
Key Construction Activities Look Ahead	
<ul style="list-style-type: none"> ▪ Patons Lane: <ul style="list-style-type: none"> ○ Rehabilitation works will continue along the alignment ○ Converting drainage lines to final design ▪ Stabling and Maintenance Facility (SMF) Orchard Hills: <ul style="list-style-type: none"> ○ Structures works will be finalised at Blaxland Creek ○ Unsuitable material will continue to be added to the containment cell at PS105 	

- Defence Land:
 - Drainage and finishing works ongoing
 - Viaduct segment placement will continue
- Luddenham Station:
 - Rehabilitation of disturbed areas
- Luddenham Road South:
 - Finishing earthworks
 - Drainage and stabilisation works will continue
- M12 to Cosgroves Creek:
 - Filling activities to continue
 - Spray sealing of the alignment
- Elizabeth Drive:
 - Topsoiling and hydromulching
 - Permanent alignment drainage works ongoing

ER Inspections

There were two (2) ER Inspections conducted on 13/06/24 and 27/06/24 by Mr [REDACTED]

Key points/issues raised during these inspections were as follows:

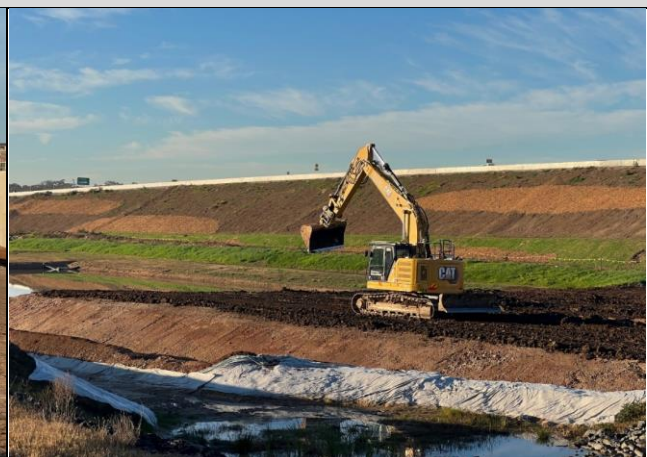
- The project is performing well and most controls are implemented effectively
- Areas of the project have been constructed to final design ready for handover
- Revegetation has been successful across the project
- Rectification of some controls in drainage lines needed to occur as a priority
- Illegal dumping at the Luddenham Rd roundabout was disposed of
- Refuelling and fuel storage needs to occur at least 50m away from water bodies
- Preparations for future rain events needs to occur for all temporary controls

ER inspections are on a fortnightly cycle weather and health permitting.

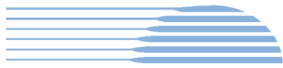
Photos



M12 Bridge - SCAW now have access underneath the M12 bridge



M 12 Bridge - Topsoil is being distributed around the disturbed areas and will be hydromulched over the coming days



Elizabeth Drive Compound - Batters have been completed and are now hydromulched



Luddenham North - Weeds have been sprayed, however fireweed is returning.



Luddenham North - Piers and the gantry are ready for viaduct installation over the Warragamba pipeline in July



Defence - Viaduct elements are stored within the site awaiting lifting into place



Defence - The viaduct is progressing towards to Warragamba pipelines from within the defence site



Blaxland's Creek - Scour rock has been placed around the base of the piers



Lansdowne Rd - Works continue on the internal haul road perpendicular to Lansdowne Rd

Cosgrove's Creek - A concrete causeway has now been installed across Cosgroves Creek

Endorsed Document/s

The following documents were endorsed/approved by the ER:

- Nil this period

The following documents were provided for information or reviewed:

- SCAW Construction Environment Management Plan rev 4
- SCAW Air Quality Management Plan and Air Quality Monitoring Program rev 4
- SCAW Flora and Fauna Management Plan
- SCAW Noise and Vibration Management Plan and Noise and Vibration Monitoring Program rev 4
- SCAW Soil and Water Monitoring Program rev 4
- SCAW Construction Monitoring Report rev 3

Complaints / Incidents / Non-compliance

There were no Non-Compliances with the Approval raised by or reported to the ER this period
There were no incidents of note identified by or reported to the ER this period.

Two complaints were reported to the ER during the period.

- One relating to heavy vehicles turning right out of Patons Lane onto Luddenham Road.
- One relating to a pothole that had formed on Luddenham Road

Audits (specific to packages reported in this report)

- Nil this period

Looking Forward – Core Focus Areas

The project has completed a lot of ground stabilisation works, resulting in a reduced ERSED risk profile. It was uncertain who was responsible for the causation of the issues that resulted in complaints, however the SCAW contractor involved themselves swiftly to resolve the issue. Traffic and road conditions will be monitored closely during the upcoming ER inspections.

ER Closing Comments: Overall the project is maintaining a positive attitude towards the ER's inspections. With areas nearing handover to SSTOM a focus will also be placed on environmental risk to ensure issues are still given the same level of commitment prior to a change in operational control.

4. Stations, Systems, Trains, Operations and Maintenance Package (SSTOM)

Contract Package	Environmental Representative/s
Stations, Systems, Trains, Operations and Maintenance Package (SSTOM).	
Key Construction Activities During the Period	
<ul style="list-style-type: none"> ▪ St Mary's Station (STM): <ul style="list-style-type: none"> ○ Waterproofing is ongoing. ○ Concrete base pours are ongoing. ▪ Orchard Hills Station (ORH): <ul style="list-style-type: none"> ○ Pile break back ongoing ○ Waterproofing ongoing ○ Sump construction in box commenced ○ Concrete batch plant base slabs are ongoing, construction of batch plant commenced ▪ Stabling and Maintenance Facility (SMF): <ul style="list-style-type: none"> ○ Deliveries ongoing from Western Tunnelling Package (Metro West) for pad fill mostly completed ○ Substation filling ongoing ○ Permanent stormwater drainage commenced ○ Connection of 132kv power commenced ▪ Luddenham Station (LUD): <ul style="list-style-type: none"> ○ Piling completed ▪ Aerotropolis Core (AEC): <ul style="list-style-type: none"> ○ Pile break-back ongoing 	
Key Construction Activities Look Ahead	
<ul style="list-style-type: none"> ▪ St Mary's Station: <ul style="list-style-type: none"> ○ Slab pours ongoing, likely to utilise out of hours for larger pours ○ Tower crane 2 erection to occur (likely in August) ○ Waterproofing ongoing ▪ Orchard Hills Station: <ul style="list-style-type: none"> ○ Box sump and drainage works ○ Batch plant construction ○ Waterproofing ▪ Stabling and Maintenance Facility: <ul style="list-style-type: none"> ○ Ongoing importation of material to continue. ○ Connection of 132kv power to continue. ○ Additional area for stockpiling. (SCAW handover to SSTOM) ○ Permanent stormwater drainage to continue ○ Weed Spraying to commence 	

- Luddenham Station
 - Car park extended and resurfaced
 - Detailed excavation of the station area to commence once piling is completed.
 - Pile break-back
- Aerotropolis Core:
 - Realignment of drains, Parklife Metro (PLM) investigating fast-tracking permanent stormwater drainage installation
 - AEC discharge pipeline
 - Earthworks to commence

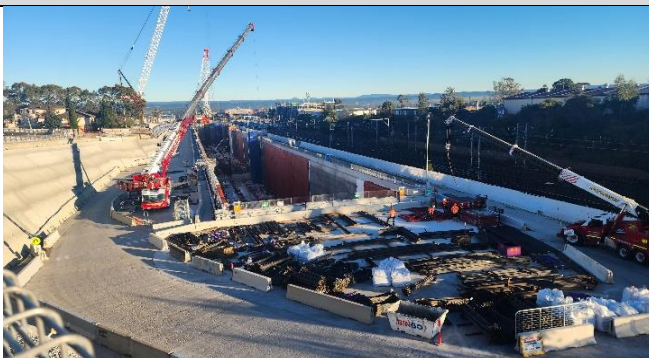
ER Inspections

There were two (2) ER Inspections conducted on 04/06/24 and 18/06/24 by Mr [REDACTED].

Key points/issues raised during these inspections were as follows:

- Sites continue to generally hold up well from the large rainfall events throughout the month, internal drainage issues and installation of erosion controls were raised with PLM.
- The timing of completion of post-rainfall maintenance of erosion and sediment controls continued to be raised with PLM. It was noted that there was a high frequency of rainfall which made some areas difficult to access.
- Weed maintenance continued to be raised across all sites as an action. The onboarding of a weed contractor was completed and spraying is to commence in July (delayed due to the onboarding of plant).
- STM – noise mitigation for the tower crane was ongoing. It was noted that an arrangement was in place with TC1 to have a shroud installed (likely 4-6 weeks) and TC 2 will be installed before setup.
- STM – noted that laydown area adjacent to Glossip St gate had been concrete stabilised (good practice)
- ORH - The turkey nest and sumps were being managed through tanking water to the STM water treatment plant for disposal via trade waste.
- ORH - Maintenance of ESC and removal of sediment were being implemented, although the finalisation of actions was pending (noted rain events impeded access to some areas)
- SMF – Tie in works with SUMP overflow to SCAW-controlled area continued, noting that access was limited due to rain events. It was noted that water discharge from vac trucks required additional erosion protection. PLM had since stabilised the embankments and tool boxed operators.

Photos



STM – View of box and cranes operating from Glossip St gate



STM – Site exit



ORH – Maintenance of the Erosion and Sed. Controls (ESC) to the sump was not actioned



ORH –Turkey nest being emptied via tankers to STM water treatment plant.



ORH –concrete batch plant - preparation for concrete base slabs had commenced, it was noted that large areas were exposed in preparation for slab pours.



ORH – Maintenance of ESC and removal of sediment from internal swale was ongoing – rock added to eroded sections, but tie in work was ongoing



SMF – water tankers moving site water to the sumps were noted to be causing embankment erosion. Operators were tool boxed and batters stabilised.



SMF – tie-in works with SMF were ongoing. Stabilisation of the channels was pending access due to wet conditions.



LUD –Piling works were completed in June.



AEC – Up-stream water diversion with rock checks and inline flocculation.

Endorsed Document/s
<p>The following documents were endorsed/approved by the ER:</p> <ul style="list-style-type: none"> ▪ Sydney Metro Western Sydney Airport – CSSI Staging Report, Revision 10, dated 22 May 2024 (Endorsed by Mr [REDACTED]) <p>The following document was approved as the Sydney Metro (SM) approved delegate pursuant Section 1.4.4 of the Construction Noise and Vibration Standard v4.2:</p> <ul style="list-style-type: none"> ▪ Sydney Metro Western Sydney Airport STTOM – DNVIS OHE Concrete Work OOH and Batch Plant Rev 1 for Scenarios 4 and 5, dated 5 June 2024 ▪ Sydney Metro Western Sydney Airport STTOM – DNVIS AEC Concrete Works OOH Rev 1 dated 26 June 2024 <p>The following documents were provided for information or reviewed with comments provided to Sydney Metro:</p> <ul style="list-style-type: none"> ▪ SMWSA SSTOM Submissions Board, Submissions Forecast & ICD Submissions Board - June 2024 ▪ OHE - Construction Traffic Management Plan – Stage 3 ▪ Groundwater Monitoring Plan Rev 01 (under review) ▪ E57 reports for DNVIS's approved above.
Complaints / Incidents / Non-compliance
<p>There were no new non-compliances nor incidents of note reported to the ER during this period.</p> <p>Two complaints were reported to the ER during the period at Orchard Hills Station.</p> <ul style="list-style-type: none"> - One concerns the PUDCLIP and reasoning consultation - Two complaints regarding potholes and safety for vehicles <p>It is noted that PLM has been working with the Council and has repaired the potholes.</p>
Audits (specific to packages reported in this report)
<ul style="list-style-type: none"> ▪ Nil this period
Looking Forward – Core Focus Areas
<p>The focus continues to be the implementation of the CEMP and sub-plans, with a particular focus on erosion and sediment controls and sediment tracking with the heightened risk from ongoing rain events.</p> <p>ER Closing Comments: It is noted that while erosion and sediment controls are improving, the urgency of installing before a rain event and the post-rainfall maintenance continued to be an ongoing issue at Orchard Hills.</p>

5. Statement of Limitations

Healthy Buildings International (HBI) has prepared this report in accordance with the requirements of Condition A32 (k) of the Sydney Metro Western Sydney Airport, Concept and Stage 1 SSI 10051 Approval (23 July 2021). The report is for the sole purposes of the Department of Planning, Housing and Infrastructure (DPHI) and Sydney Metro. It has been prepared based on generally accepted practices and standards at the time it was prepared. No other warranty, expressed or implied, is made as to the professional advice included in this Report. This report did not assess any aspects relating to safety.

Where the Report indicates that information has been provided to HBI by third parties, HBI assumes no liability for any inaccuracies in or omissions to that information.

This Report was prepared based on the conditions encountered and information reviewed at this time. HBI disclaims responsibility for any changes that may have occurred after this time.

This Report should be read in full. No responsibility is accepted for use of any part of this report in any other context or for any other purpose or by third parties. This Report does not purport to give legal advice. Legal advice can only be given by qualified legal practitioners.

Except as required by law, no third party may use or rely on this Report unless otherwise agreed by HBI in writing. Except as specifically stated in this section, HBI does not authorise the use or findings of this Report by any third party.

To the extent permitted by law, HBI expressly disclaims and excludes liability for any loss, damage, cost or expenses suffered by any third party relating to or resulting from the use of, or reliance on, any information contained in this Report. HBI does not admit that any action, liability or claim may exist or be available to any third party.

22 May 2024

Director
Director Sustainability Environment & Planning SMWSA
Sydney Metro
Transport for NSW
PO Box K659
HAYMARKET NSW 1240

Ref: 201209_SR R10.0

Dear [REDACTED]

RE: Endorsement of the Sydney Metro Western Sydney Airport Staging Report (Rev. 10)

Thank you for providing the Sydney Metro Western Sydney Airport – CSSI Staging Report, Revision 10, dated 22 May 2024 (the Staging Report) for Environmental Representative (ER) review and endorsement as required by the Condition of Approval A11 of the Sydney Metro Western Sydney Airport project (SSI – 10051 July 23, 2021).

Revision 10.0 of the Staging report is the outcome of:

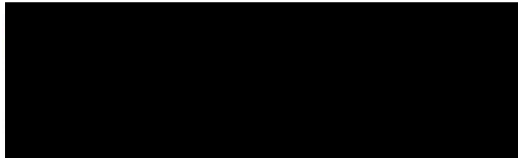
- a review of acronyms used in the document and defined in Table 1-1;
- review of the applicability of Condition of Approval E13, and corrections in Appendix A to reflect its applicability to the AEW – St Marys Footbridge and SSTOM stages; and
- review of the applicability of REMMs NAH8, OHYD4, and OWQ4, and corrections in Appendix D to reflect their applicability to the SSTOM stage.

As an approved ER for the Sydney Metro Western Sydney project, I have provided comment on the Staging Report with respect to the risk assessment required under Condition A11(e) (the Risk Assessment) and how it influences the nominated allocation of project requirements, namely the Conditions of Approval (CoA) and the Revised Environmental Mitigation measures (REMMs), Environmental Performance Outcomes (EPOs) and the obligations under the Construction Environmental Management Framework (CEMF).

In addition to the above, I have also provided comments on the adequacy of the Staging Report to satisfy requirements A11 (a) – (d).

It should be noted that the ER review of risks and the allocation of requirements is based on information known to the ER at the time of review and will be subject to update as the project evolves. I consider the Staging Report, including the Risk Assessment, appropriate for submission to the Planning Secretary for information as required by Condition of Approval A10.

Yours sincerely



Environmental Representative – Sydney Metro Western Sydney Airport