

Notification – Orchard Hills Metro Station and the Stabling and Maintenance Facility

Sydney Metro is Australia’s biggest transport project.

July 2024

Sydney Metro – Western Sydney Airport is the new metro railway line which will service Greater Western Sydney and the new Western Sydney International (Nancy-Bird Walton) Airport. A city-shaping project, the new 23-kilometre metro railway will connect Bradfield city centre with St Marys in the north – where customers can connect to the existing Sydney Trains suburban T1 Western Line. The NSW and Australian governments have a shared objective of having Sydney Metro – Western Sydney Airport operational when the airport opens for passenger services.

CPB Contractors and United Infrastructure are delivering the Surface and Civil Alignment (SCAW) works. CPB Contractors Ghella are delivering Stations Boxes and Tunnelling (SBT) and Parklife Metro consortium are delivering the Stations, Systems, Trains, Operations and Maintenance (SSTOM) works. See the list below for the work activities at Orchard Hills during July. See maps for the work locations.

Stations, Systems, Trains, Operations and Maintenance works include:

Orchard Hills Metro Station:

- Excavations, waterproofing, formwork, steel fixing and concrete pours inside the station box to construct the base and walls of the station, and drainage pits.
- Constructing a concrete batching plant on the eastern end of the site, which will provide concrete services to multiple SSTOM sites and locations.
- Surveying and geotechnical investigations, including potholing, non-destructive digging and testing along local surrounding roads to inform utility designs.

Stabling and Maintenance Facility:

- Major earthworks at the Stabling and Maintenance Facility site, including importing materials, excavations and compacting for the rail areas, and substation and operations control centre buildings.
- Construction of a new 132kV powerline at the Stabling and Maintenance Facility site, commencing from the future substation area, working towards Patons Lane
- Major drainage works, including excavations, installing pits and pipes, and backfilling at the Stabling and Maintenance Facility site.

Surface and Civil Alignment works include:

- Drainage installation and construction of the access road off Lansdowne Road
- Deliveries and placement of oversized infrastructure at Blaxland Creek, Patons Lane and Unnamed Creek
- Ongoing surface formation and earthworks for the track alignment between Lansdowne Road and the Warragamba Pipelines
- Installation of concrete parapets on the viaduct over Patons Lane
- Finishing works including topsoiling, landscaping and Installation of open drains and fencing, continue.

Station Boxes and Tunnelling works include:

- Site wide concrete works, including formwork, for various structures
- Tunnel boring machine segments transported to Claremont Meadows
- Commissioning and operation of a water treatment plant



- Delivering and removing plant and equipment and installing tunnel drive structure drainage and concrete formwork
- Safely removing hazardous materials, in line with SafeWork NSW and Environment Protection Authority guidelines, and Sydney Metro health and safety procedures
- Site photography using drone cameras above the construction site.

Out-of-hours work activity includes:

- Deliveries of over-sized equipment and machinery and materials to the Orchard Hills Metro Station and Stabling Maintenance Facility sites
- Extended work hours for large concrete pours and concrete finishing works inside the station box at the Orchard Hills site.
- Dewatering activities at the Orchard Hills and Stabling Maintenance Facility sites
- Extended work hours for major earthworks at the Stabling Maintenance Facility site
- Concrete batching plant operations at the Orchard Hills Metro Station site
- Viaduct Installation at Unnamed Creek and over Patons Lane
- Abutment steel fixing and Formwork Installation at Patons Lane South.

Work hours:

Standard construction hours are **Monday to Friday** from **7am** to **6pm** and **Saturdays** from **8am** to **1pm**.

Activities associated with tunnelling operate **24 hours a day, 7 days per week**.

Some work will also be required to take place outside our standard construction hours to minimise traffic impacts or to ensure the safety of pedestrians, motorists, and our workers. Out-of-hours work activities will be carried out in line with the project Environmental Protection Licence, Road Occupancy Licences, and Transport for NSW requirements.

Impacted surrounding residents and businesses will be notified in advance of any out-of-hours work.

What to expect:

- Mitigation measures will be in place to minimise impacts including installing noise blankets, where feasible, respite periods during high noise activities, noise and vibration monitoring, and water carts for dust suppression
- Increased light and heavy vehicle movements on surrounding roads, and local road closures. All vehicles will be turned off when not in use, non-tonal reversing alarms will be fitted to plant and machinery and trucks will avoid reversing into and on site, where feasible
- Temporary lighting to ensure a safe worksite will be directed away from properties
- Communication will be limited to radios only when moving and unloading equipment, with no use of horns or loud radios
- Traffic control and signage to safely assist motorists, pedestrians, and cyclists.

Equipment used:

Equipment used will include, but is not limited to, excavators, cranes, dozers, graders, rollers, vacuum truck, water carts, heavy and light site vehicles, watercart, generators, survey equipment (marker pegs and pickets, flagging) and traffic management devices, concrete agitators, water carts, pneumatic drills, concrete saws, bobcats, chain saws, telehandler and hand tools.

Changes to traffic, pedestrian, and cyclist routes:

During these works, traffic control will be in place to assist motorists, pedestrians and cyclists with any changes to traffic conditions. This may include contraflow and stop-slow traffic controls. The times of these changes will vary and are dependent on road authority approvals. Access to driveways and buildings will be maintained at all times.

Residents will be separately notified if access to driveways will be affected, or access to private property is requested.

Three monthly out-of-hours lookahead activities:

Activity	Equipment	Work hours	Timing
SSTOM works – Orchard Hills Metro Station site			
Concrete pours and finishing works station box base slab and walls	Concrete pump, vibrators, concrete trucks, generators and lighting towers	6pm to 10pm, Monday to Friday 1pm to 4pm, Saturdays	June – October 2024
Concrete batching plant operations	Concrete trucks, generators, mixers, compressors and lighting towers	24 hours a day, seven days a week	July 2024 – 2026
Oversized plant and equipment activities	Traffic management, light and heavy vehicles, generators, lighting towers and mobile cranes	10pm to 7am	Ongoing
Dewatering activities	Water treatment plant, water pumps, light vehicles, generators and lighting towers.	As required.	Ongoing
SSTOM works – Stabling Maintenance Facility site			
Extended work hours for major earthworks	Excavators, dump trucks, graders, compactors, drum rollers, dozers, trucks, generators and lighting towers	6am to 7am, Monday to Friday 1pm to 4pm, Saturdays	June – October 2024
Long weekend possession - 132kv power supply installation on Patons Lane	Excavators, trucks, mobile cranes, compactors, vibrators, generators and lighting towers	6pm Friday 4 October to 6pm Tuesday 8 October 2024	October 2024 (October long weekend)
Dewatering activities	Water treatment plant, water pumps, light vehicles, generators and lighting towers.	As required.	Ongoing
SBT works – Orchard Hills			
Excavation and removal of materials inside the station box.	Excavation and removal of materials inside the station box.	6pm to 7am Monday to Friday 1pm to 4pm Saturdays	Ongoing – August 2024

Feedback:

Detailed Noise and Vibration Impact Statements (DNVIS) have been prepared, including proposed mitigation measures based on noise modelling.

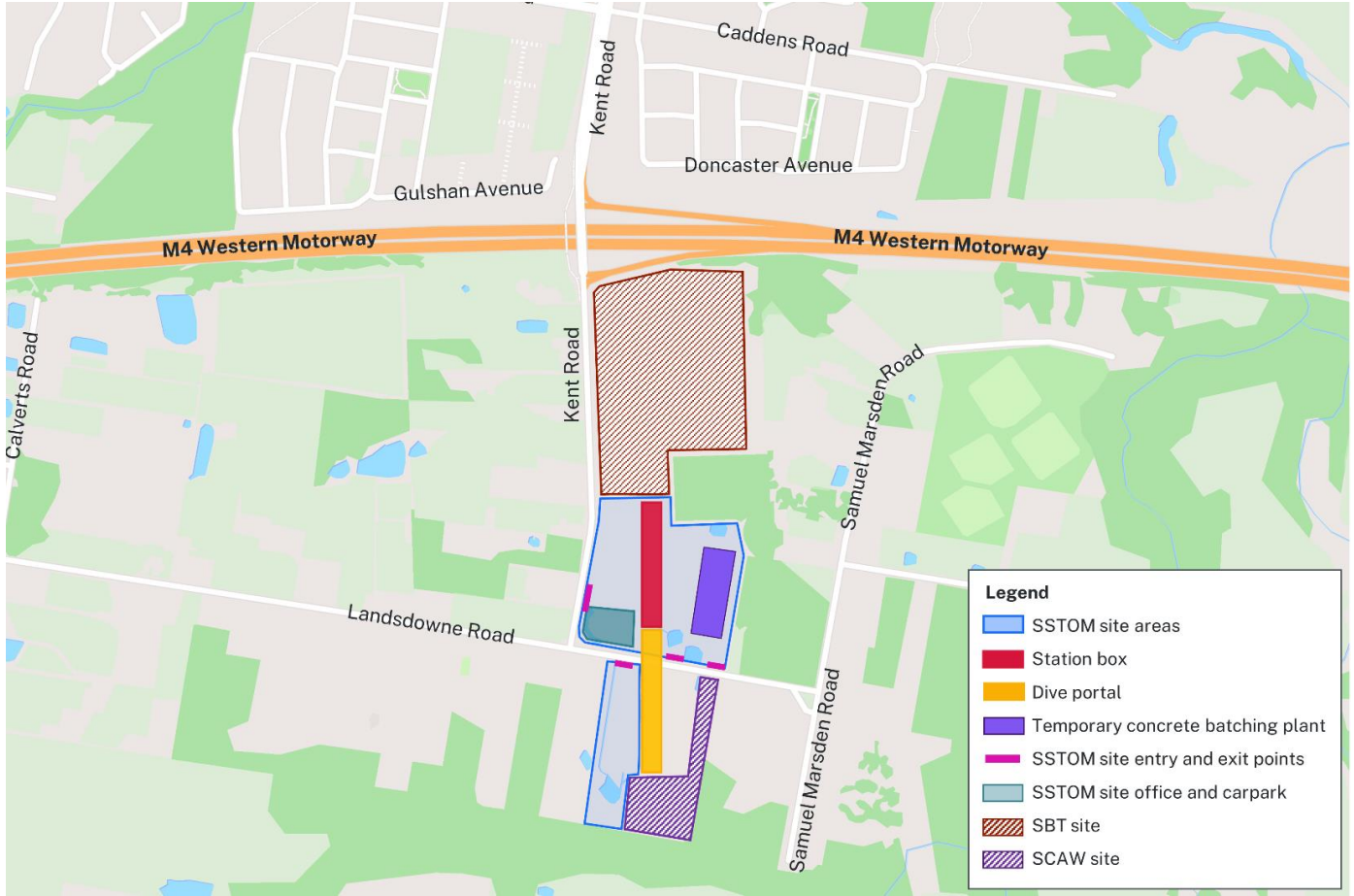
We invite your feedback on appropriate respite periods or mitigation measures that may be required to your specific circumstances.

The SSTOM and SCAW Community Engagement strategies are now online.

Please visit www.parklifemetro.com.au/SSTOMCCS or www.cpbcontractors.cc/SCAWstrategy to view the respective strategy and contact us to provide feedback.



Orchard Hills Metro Station work location:



Please join us for a free **Community Day**

Register by scanning the QR code

Food Activities Project tours

Sunday 7 July 2024
10am to 2pm

Learn about the Sydney Metro – Western Sydney Airport project and hear from our staff!

Australian Government NSW GOVERNMENT sydney METRO

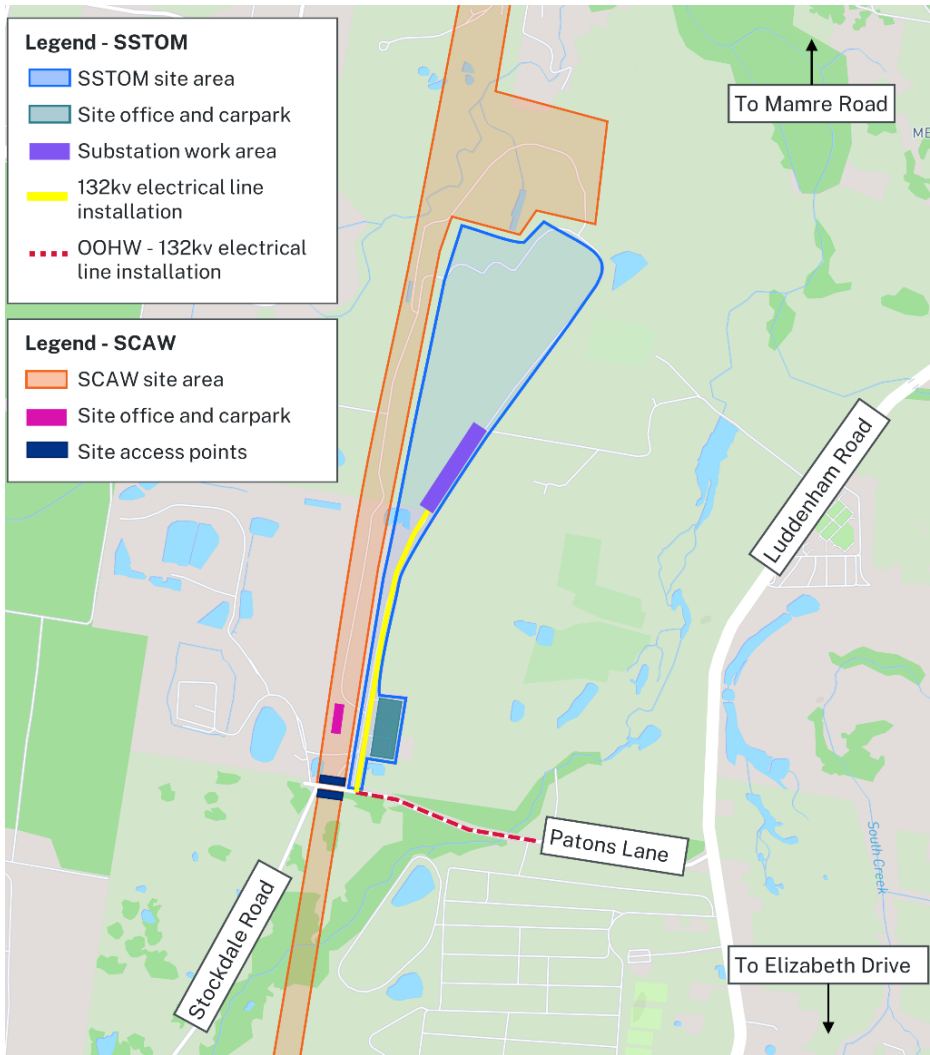
Sydney Metro – Western Sydney Airport Community Day

Come join us for an exclusive insider's tour highlighting the ongoing construction of the new metro railway line. This rare chance allows you to witness firsthand the development of the new metro bridge over the future M12 motorway and the progress at Luddenham and Bradfield Metro Stations.

Our knowledgeable tour guides will be members from our construction teams, ready to provide detailed insights and answer any questions you have about the project.

Be sure to register for the day via the [QR code](#) or visit [Sydney Metro – Western Sydney Airport Community Open Day | Register](#)

Stabling Maintenance Facility work location:



Contact us:

Please contact the community team on **1800 717 703** or sydneymetrowsa@transport.nsw.gov.au if you have any questions, complaints or would like to provide feedback about the work. We will continue to keep you updated on the progress of work in your area.

If you would prefer to receive updates by email, please contact us and we will add you to the distribution list.

Thank you for your cooperation while we complete this essential work.



Sydney Metro has launched Sydney Metro Connect – a new way to stay informed.

Access information in over 100 languages Download **Sydney Metro Connect** from the App store or get it on Google Play.

For more information contact



24-hour Community Information Line **1800 717 703**



sydneymetrowsa@transport.nsw.gov.au



Sydney Metro – Western Sydney Airport
PO Box K659, Haymarket NSW 1240



If you need help understanding this information, please contact the Translating and Interpreting Service on **131 450** and ask them to call us on **1800 717 703**.