

[REDACTED]  
Senior Compliance Officer – Government Projects  
Department of Planning, Housing and Infrastructure  
Locked Bag 5022  
PARRAMATTA NSW 2124

8 January 2024  
Ref:201209-ER\_DHI-December 2023

Dear [REDACTED]

**RE: Sydney Metro - Sydney Metro Western Sydney Airport SSI 10051 – ER Monthly Report for December 2023**

Healthy Buildings International (HBI) submits this report to the Secretary in accordance with:

- Condition A32 (k) of the Sydney Metro Western Sydney Airport, SSI 10051 Approval (23 July 2021)

The attached summary details the key activities undertaken by Environmental Representatives for Sydney Metro Western Sydney Airport for the month of December 2023.

Yours sincerely

[REDACTED]  
Environmental Representative

Cc:

Sydney Metro: [REDACTED]  
[REDACTED]

DHI: Major Projects Portal

Enclosed: ER Endorsement of SCAW CEMP R3 191223



**Table of Contents**

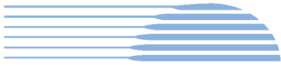
<b>1. Advanced and Enabling Works (AEW) .....</b>	<b>3</b>
<b>2. Station Boxes and Tunnelling (SBT) .....</b>	<b>6</b>
<b>3. Surface and Civil Alignment Works (SCAW) .....</b>	<b>11</b>
<b>4. Stations, Systems, Trains, Operations and Maintenance Package (SSTOM) .....</b>	<b>16</b>
<b>5. Statement of Limitations .....</b>	<b>19</b>



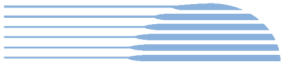
**1. Advanced and Enabling Works (AEW)**

Contract Package	Environmental Representative/s
Advanced and Enabling Works (AEW)	[REDACTED]
<b>Key Construction Activities During the Period</b>	
<ul style="list-style-type: none"> <li>▪ <b>SSTOM Project Office (SPO):</b> <ul style="list-style-type: none"> <li>○ The works are complete and the building has been issued an occupation certificate</li> </ul> </li> <li>▪ <b>St Marys Footbridge (FSM):</b> <ul style="list-style-type: none"> <li>○ Piling works have continued</li> <li>○ Compound establishment was completed</li> <li>○ Spoil loadout from the compound</li> </ul> </li> <li>▪ <b>Water:</b> <ul style="list-style-type: none"> <li>○ The works are complete</li> </ul> </li> </ul>	
<b>Key Construction Activities Look Ahead</b>	
<p>The Construction activities planned for the upcoming period for the Advanced Enabling Works (AEW) comprise of:</p> <ul style="list-style-type: none"> <li>▪ <b>SSTOM Project Office (SPO):</b> <ul style="list-style-type: none"> <li>○ No future works are anticipated</li> </ul> </li> <li>▪ <b>St Marys Footbridge:</b> <ul style="list-style-type: none"> <li>○ Continuation of piling works</li> <li>○ Service investigations</li> <li>○ Material haul out from piling works</li> </ul> </li> <li>▪ <b>Water:</b> <ul style="list-style-type: none"> <li>○ No future works are anticipated</li> </ul> </li> </ul>	
<b>ER Inspections</b>	
<p>There were two (2) inspections of the St Marys Station Footbridge contract undertaken by Mr [REDACTED] in December 2023 (ER inspections are on a fortnightly cycle weather and health permitting).</p> <p><b>St Marys Footbridge</b></p> <ul style="list-style-type: none"> <li>▪ <b>05/12/2023</b> - Key points/ issues raised during this inspection were as follows: <ul style="list-style-type: none"> <li>○ Works have been carried out in a compliant fashion</li> <li>○ The HVLR needed to be approved prior to the removal of stockpiles via Hobart St. LoR were requested to provide a status of HVLR and how Hobart St was accessed to move the stockpiled material.</li> </ul> </li> <li>▪ <b>18/12/2023</b> - Key points/ issues raised during this inspection were as follows: <ul style="list-style-type: none"> <li>○ The site was being prepared for the Christmas shutdown period and was generally in good condition</li> <li>○ Updates to the CEMP, including the water reuse strategy, is required by the end of January 2024</li> </ul> </li> </ul>	

Photos	
<b>St Marys Footbridge</b>	
	
<p>Spoil was being loaded out during the inspection, dust was not noticeable and the exit point was clean</p>	<p>A ballast access track to the rail corridor has been provided for access and storage of plant</p>
	
<p>The cracked and damaged road needs to be repaired prior to allowing trucks to exit from the site</p>	<p>The spoil storage silos have been cleaned up with geofabric placed on the ground, this is good practice</p>
	
<p>The materials stored adjacent to the garden bed were within the flagging boundary</p>	<p>The covering on the stockpile adjacent to Hobart St needs to be replaced and loose spoil placed under the geofabric</p>
Endorsed Document/s	
<p>The following documents were endorsed/approved by the ER (Mr [REDACTED])</p> <ul style="list-style-type: none"> <li>▪ None for the period</li> </ul>	



<p>The following documents were provided for information or reviewed with comments provided to Sydney Metro.</p> <ul style="list-style-type: none"><li>▪ None for the period</li></ul>
<b>Complaints / Incidents / Non-compliance</b>
<p>No non-compliances or incidents were reported to or identified by the ER for the period.</p> <p>No complaints were received during the period.</p>
<b>Audits (specific to packages reported in this report)</b>
<ul style="list-style-type: none"><li>▪ None for the period</li></ul>
<b>Looking Forward – Core Focus Areas</b>
<p>St Marys Footbridge works will be performed during standard hours Monday to Friday with the next weekend possession scheduled for March 2024. The focus over the coming months is ensuring the CEMP is revised to capture the upcoming works.</p> <p><b>ER Closing Comments:</b> Footbridge St Marys has a reasonably quiet few months until March 2024 when works are scheduled to ramp up. The ER will focus on ensuring the upcoming works are complaint and that appropriate planning is undertaken by the contractor to achieve this.</p>



## 2. Station Boxes and Tunnelling (SBT)

Contract Package	Environmental Representative/s
Station Boxes and Tunnelling (SBT)	[REDACTED]
<b>Key Construction Activities During the Period</b>	
<ul style="list-style-type: none"> <li>▪ St Marys:               <ul style="list-style-type: none"> <li>○ No SBT activities this period</li> <li>○ SBT activities (TBM retrieval) anticipated to resume April/May 2024</li> </ul> </li> <li>▪ Claremont Meadows Services Facility:               <ul style="list-style-type: none"> <li>○ Water treatment plant operating.</li> <li>○ Sediment basins operational.</li> <li>○ Storage of surplus construction materials from other northern sites</li> <li>○ Casting of TBM and installation of support blocks for traverse.</li> <li>○ TBM Catherine breakthrough.</li> </ul> </li> <li>▪ Orchard Hills:               <ul style="list-style-type: none"> <li>○ Spoil and topsoil storage.</li> <li>○ Operation and maintenance of ERSED controls.</li> <li>○ Pre-cast tunnel segment storage in the north.</li> <li>○ TBMs tunnelling progressed 2100 m and 1700 m respectively</li> <li>○ Tunnel segment delivery</li> <li>○ Processing and storage of tunnel spoil.</li> <li>○ Tunnel Spoil haulage offsite</li> <li>○ Grout plant operation.</li> <li>○ Water treatment plant operation</li> </ul> </li> <li>▪ Aerotropolis:               <ul style="list-style-type: none"> <li>○ No SBT activities this period</li> </ul> </li> <li>▪ Bringelly Services Facility:               <ul style="list-style-type: none"> <li>○ Water treatment plant Operation – Water treated and disposed at Claremont Meadows</li> <li>○ Storage of surplus construction materials from other southern sites</li> </ul> </li> </ul>	
<b>Key Construction Activities Look Ahead</b>	
<ul style="list-style-type: none"> <li>▪ St Marys:               <ul style="list-style-type: none"> <li>○ Nil SBT activities next period.</li> </ul> </li> <li>▪ Claremont Meadows Services Facility:               <ul style="list-style-type: none"> <li>○ Continue erosion and sediment controls operation and maintenance.</li> <li>○ Continue Water Treatment Plant operation and maintenance.</li> <li>○ Storage of surplus construction materials from other northern sites</li> <li>○ TBM Catherine traverse</li> <li>○ TBM Marlene breakthrough and traverse anticipated</li> </ul> </li> <li>▪ Orchard Hills:               <ul style="list-style-type: none"> <li>○ Reconfiguration and improvements (concreting) of internal haul roads.</li> </ul> </li> </ul>	



- Other activities anticipated for the upcoming period are generally consistent with those for this period.
- Aerotropolis:
  - Nil SBT activities next period.
  - SBT activities (TBM retrieval) anticipated to resume June/July 2024
- Bringelly Services Facility:
  - Continue Erosion sediment controls operation and maintenance.
  - Operation of WTP.
  - TBM breakthrough and traverse anticipated March 2024

**ER Inspections**

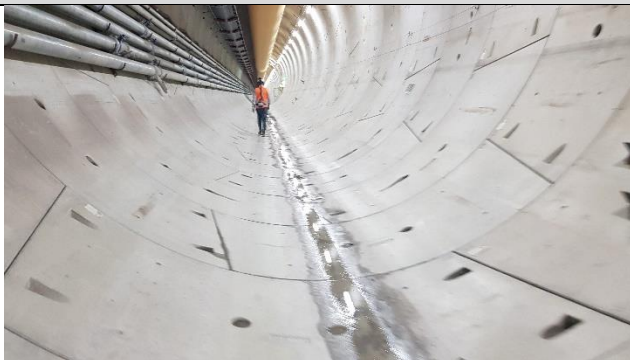
There were two (2) ER Inspections conducted on 07/12/23 and 18/12/23 by Mr [REDACTED]

**Both Inspections Attended by the EPA** - Key points/ issues raised during the inspections were as follows:

- Sites were generally well managed with requirements for improvement noted in relation to internal haulage road from northern extent of the spoil shed to the wheel wash, to improve efficacy and efficiency of wheel washing and concrete exit runway, which required increased frequency of sweeping and washdown to minimise tracking onto Kent Road and road verges.
- Some spoil haulage trucks, reportedly from new haulage subcontractors, we observed missing project signage consistent with Condition A46. CPBG were advised to review and refresh current HV onboarding and management processes.
- Changes to landform and activities at Claremont Meadows Facility western areas require revision of the site ESCP and Soil Conservationist review in accordance with section 9.2 of the SWMP
- Water of appearance not consistent with site stormwater noted in northern basin. CPBG to investigate and provide information, including justification for any discharge to the basin.
- TBM spoil material storage management was significantly improved with storage in external areas minimised, reducing potential for escape of wet materials onto haul roads.

ER inspections were on a fortnightly cycle for this period. Inspections of St Marys and Aerotropolis sites are paused until SBT site establishment activities for TBM retrieval commence.

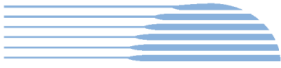
**Photos**



**Orchard Hills view North:** TBM Marlene tunnel .



**TBM Marlene Tunnel:** Cross passage excavated.



**Orchard Hills view north:** Internal spoil haul road in poor condition and requiring repairs.



**Orchard Hills view west:** Internal spoil haul road in poor condition and requiring repairs.



**Orchard Hills south:** Manual wheel washing prior to, and supplementing, automated wheel wash.



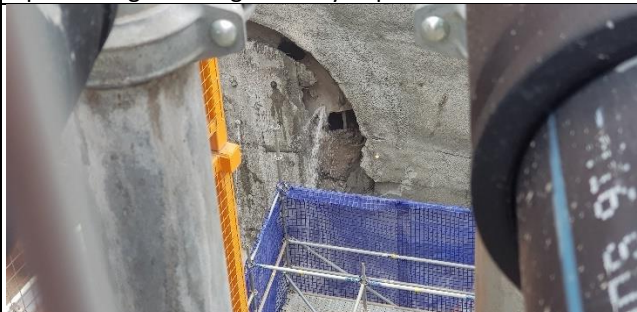
**Orchard Hills exit:** Greater frequency of washdown needed to minimise tracking onto Kent Rd.



**Orchard Hills view northwest:** Management of tunnel spoil storage area significantly improved.



**Orchard Hills exit:** Tunnel spoil haulage truck noted without project signage.



**Claremont Meadows:** TBM Catherine breakthrough.

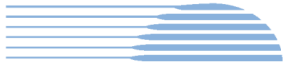


**Claremont Meadows:** TBM Catherine breakthrough.





<p><b>Claremont Meadows western areas:</b> ESCP to be reviewed by Soil Conservationist per CSWMP.</p>	<p><b>Claremont Meadows:</b> Negligible tracking noted from southern site access onto Gipps Road.</p>
<p><b>Claremont Meadows:</b> Water of unusual appearance noted in northern sediment basin.</p>	<p><b>Bringelly facility service shaft:</b> TBM traversing support block installation.</p>
<p><b>Endorsed Document/s</b></p>	
<p>No documents were endorsed/approved by the ER.</p> <p>The following documents were provided for information or review as applicable:</p> <ul style="list-style-type: none"> <li>▪ May to September 2023 Surface Water 6-monthly monitoring report (Rev 00, 30/11/2023).</li> <li>▪ May to October 2023 Noise &amp; Vibration 6-monthly monitoring report (Rev 00, 30/11/2023)</li> <li>▪ Surface water Quality Monitoring Plan (Rev 2, 6/12/2023)</li> <li>▪ November Monthly Monitoring Reports comprising Dust (real-time), Noise and Surface Water.</li> <li>▪ St Marys Station PRB Monthly Mitigation Monitoring Report 4 - October 2023 (Rev 00, 4/12/2023)</li> </ul>	
<p><b>Complaints / Incidents / Non-compliance</b></p>	
<p>No Non-compliances with the Approval were raised by or reported to the ER this period. There were no incidents of note identified by or reported to the ER this period.</p> <p>Five (5) complaints were reported to the ER. All were related to Orchard Hills, and were dominated by tracking on Kent Road(2) and worker behaviour (2). One related to damage to the surface of Kent Rd.</p>	
<p><b>Audits (specific to packages reported in this report)</b></p>	
<ul style="list-style-type: none"> <li>▪ Nil this period.</li> </ul>	
<p><b>Looking Forward – Core Focus Areas</b></p>	
<p>Risks now relate mostly to activities at Orchard Hills, namely tracking onto Kent road and management of delivery/haulage vehicles, particularly cumulative impacts as SCAW activities off Lansdowne Rd are ongoing and SSTOM activities ramp-up.</p> <p><b>ER Closing Comments:</b> The contractor continues to be receptive to requests for improvements and proactive in planning of environmental controls, including for future activities at Orchard Hills. This was evidenced by a</p>	



commitment to resurface the spoil haul road at Orchard Hills to relieve pressure on exit controls and concerns raised by the ER around tracking. Effectiveness will be assessed over the next period.

The CPBG Community Relations team should be commended for their continued commitment to meaningful positive and considerate community engagement as evidenced by the following recent feedback from a St. Marys resident.

*To Whom It May Concern*

*I met Michelle from CPBG at the beginning of the construction of the new Metro at St Marys.*

*I like to say that we had good communication and support.*

*She came to give us some business vouchers from CPBG.*

*I want to thank her, for her generosity and attention and the joy she brought us with her lovely personality and was very obliging to us as she has lovely nature about her.*

*We miss her and look forward to meeting again as the progress of the new airport sites takes place.*

*We want to wish her a Merry Christmas and also to all the team there as well.*



### 3. Surface and Civil Alignment Works (SCAW)

Contract Package	Environmental Representative/s
Surface and Civil Alignment Works (SCAW)	[REDACTED]
<b>Key Construction Activities During the Period</b>	
<ul style="list-style-type: none"> <li>▪ Patons Lane:               <ul style="list-style-type: none"> <li>○ Sub structure work on going</li> <li>○ Sandstone placement north of Blaxlands Creek</li> <li>○ Northern tributary culvert construction ongoing</li> </ul> </li> <li>▪ SMF:               <ul style="list-style-type: none"> <li>○ Stockpiling of vegetation is occurring for use during SSTOM works</li> <li>○ Material continues to be stockpiled at PS105</li> </ul> </li> <li>▪ Defence Land:               <ul style="list-style-type: none"> <li>○ Sandstone placement is ongoing between Patons Lane and the Warragamba Pipeline</li> <li>○ Topsoil is being placed on batters</li> <li>○ Sub structure works ongoing</li> </ul> </li> <li>▪ Luddenham Station:               <ul style="list-style-type: none"> <li>○ Construction of Luddenham Rd roundabout continues</li> <li>○ Structural station works continue.</li> <li>○ Construction of alternative Celestino access</li> </ul> </li> <li>▪ Luddenham Road South:               <ul style="list-style-type: none"> <li>○ Ongoing placement of viaduct segments</li> <li>○ Ongoing structural works.</li> <li>○ Sediment basin constructed adjacent to Cosgrove’s Creek</li> </ul> </li> <li>▪ M12 to Cosgrove’s Creek:               <ul style="list-style-type: none"> <li>○ Sandstone is being used to build the formation.</li> <li>○ Piling is completed at Cosgrove’s Creek</li> <li>○ Cosgrove’s creek clearing and haul road crossing ongoing</li> </ul> </li> <li>▪ Elizabeth Drive:               <ul style="list-style-type: none"> <li>○ Sandstone delivery is progressing south of Elizabeth Drive</li> <li>○ OOHW sandstone delivery continues</li> <li>○ Crusher moved into place to commence crushing</li> </ul> </li> </ul>	
<b>Key Construction Activities Look Ahead</b>	
<ul style="list-style-type: none"> <li>▪ Patons Lane:               <ul style="list-style-type: none"> <li>○ Rehabilitation works are continuing along the alignment</li> <li>○ Further sampling is occurring to determine the source of contaminated leachate</li> </ul> </li> <li>▪ Stabling and Maintenance Facility (SMF) Orchard Hills:               <ul style="list-style-type: none"> <li>○ Structures works will continue at Blaxland Creek</li> <li>○ Culvert and fauna crossing works will continue at the unnamed tributary</li> </ul> </li> </ul>	



- The containment cell at PS105 will commence to accept material
- Defence Land:
  - Earthworks to continue
  - Sandstone filling and compaction will continue
  - Structures works to continue
- Luddenham Station:
  - Construction of the roundabout on Luddenham Rd will continue.
- Luddenham Road South:
  - Precast elements for the viaduct will continue to be installed
  - Structures will continue
- M12 to Cosgroves Creek:
  - Structures activities to continue.
  - Sandstone will be continued to be placed on the formation
  - Construction of the 30ML basin continues which will ultimately be a flood mitigation basin.
- Elizabeth Drive:
  - Ongoing sandstone placement along the alignment
  - Crushing of rock to commence

**ER Inspections**

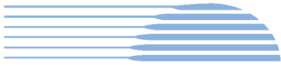
There was one (1) ER Inspection in December 2023 (ER inspections are on a fortnightly cycle weather and health permitting):

- **14/12/2023** (by [REDACTED]) - Key points/ issues raised during this inspection were as follows:
  - The recent wet conditions were generally well managed by CPBUI
  - Weeds were observed across many of the project sites. Weed mapping commenced prior to the shutdown with application of herbicide immediately following
  - Minor issues with controls e.g. sediment fence breaks, rutting etc needed to be rectified as part of a project wide surveillance plan
  - The shutdown inspections and reports were well done and effectively communicated to the site supervisors

**Photos**



<p><b>M12 Bridge</b> - Topsoil and hydromulch has been applied to batters at M12 bridge, providing a stabilised surface</p>	<p><b>Elizabeth Drive Haul Road</b> - Regrowth of hydromulched areas has been successful following recent wet weather</p>
---	---



**Elizabeth Drive Haul Road** - The culvert is being worked and a small retaining area has been left for water to collect



**Roundabout** - The drainage lines have been jute matted and seed applied, this is good practice



**Luddenham North** - Forms are being installed ready for concrete pours in the new year



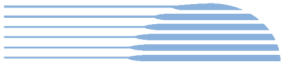
**Luddenham North** - The ERSED controls on the new Celestino access road are well installed and look to be effective



**Defence** - Works are progressing well near the Warragamba pipelines. Vibration monitoring has been compliant with the Water NSW requirements



**Unnamed tributary** - A clean water inlet is being constructed into the culvert



**Lansdowne Road** - Minor mounts of dirt have been tracked out of the site, however a street sweeper has been stationed there to clean the road



**Luddenham South** - Segments have been stacked to accurately facilitate the sequence and access by the crane



**Cosgroves Creek** – The sediment basin has been constructed as per ESCPs however requires a spillway



**Cosgroves Creek** – Work continues on excavating the 30ML flood retention basin

**Endorsed Document/s**

The following documents were endorsed/approved by the ER:

- Air Quality Construction Monitoring Program Revision 3, dated 29/09/2023
- Noise and Vibration Management Sub Plan (NVMP) Revision 3, dated 13/12/2023 which includes the Noise and Vibration Construction Monitoring Program
- Soil and Water Management Sub Plan (SWMP) Revision 3, dated 04/10/23 which includes the Surface Water Quality Construction Monitoring Program

The following documents were provided for information or reviewed:

- Nil

**Complaints / Incidents / Non-compliance**

No non-compliances were reported to or identified by the ER for the period.

One (1) incident of note was reported to the ER during the period:

- A diesel generator was dropped during transportation within the Luddenham South site resulting in 30-40 litres of diesel spilt. The spill kit was deployed and all contaminated materials, including soil, was disposed of.



No (0) complaints were reported to the ER during December 2023.
<b>Audits (specific to packages reported in this report)</b>
▪ Nil for the period
<b>Looking Forward – Core Focus Areas</b>
Focus will be on weed mapping and herbicide application, as well as the standard of ERSED controls especially given the recent wet weather.
<b>ER Closing Comments:</b> Weeds have germinated across multiple project sites and the contractor will need to engage resources swiftly to manage this issue before it becomes a significant problem. The site team has been receptive to the ER comments especially in relation to the Christmas shutdown mitigation measures. As material is about to be applied to the containment cell at PS105, scrutiny around this operation will need to increase to obtain evidence that this cell is being used as per the conditions of the RAP.



**4. Stations, Systems, Trains, Operations and Maintenance Package (SSTOM)**

Contract Package	Environmental Representative/s
Stations, Systems, Trains, Operations and Maintenance Package (SSTOM).	[REDACTED]
<b>Key Construction Activities During the Period</b>	
<ul style="list-style-type: none"> <li>▪ St Mary’s Station (STM):               <ul style="list-style-type: none"> <li>○ Piling in station box continued</li> <li>○ Setup of site offices and compound commenced</li> <li>○ Trade waste agreement in place. EPL discharge point approved (same location as SBT)</li> </ul> </li> <li>▪ Orchard Hill Station (ORH):               <ul style="list-style-type: none"> <li>○ Site establishment works continued</li> <li>○ Setup of site offices and compound continued</li> </ul> </li> <li>▪ Stabling and Maintenance Facility (SMF):               <ul style="list-style-type: none"> <li>○ Site establishment works continued</li> <li>○ Swale drain works are ongoing and safety bunds continued</li> </ul> </li> <li>▪ Luddenham Station (LUD):               <ul style="list-style-type: none"> <li>○ Site establishment works continued</li> <li>○ Station portion handover completed</li> </ul> </li> <li>▪ Aerotropolis Core (AEC):               <ul style="list-style-type: none"> <li>○ Site establishment works continued</li> <li>○ Relining of swale drains continued</li> <li>○ Realignment of clean water diversion commenced</li> <li>○ Site traffic route alignment ongoing.</li> <li>○ Hydroseed was applied for long term stabilisation (noted that storm event washed seed into erosion controls and will require re-application)</li> </ul> </li> </ul>	
<b>Key Construction Activities Look Ahead</b>	
<ul style="list-style-type: none"> <li>▪ St Mary’s Station:               <ul style="list-style-type: none"> <li>○ Site establishment works:</li> <li>○ Test piles ongoing. Permanent piles to follow</li> <li>○ Pile testing hammer/noise monitoring to be undertaken</li> </ul> </li> <li>▪ Orchard Hills Station:               <ul style="list-style-type: none"> <li>○ Site establishment works:</li> <li>○ Remove contaminated stockpiles</li> </ul> </li> <li>▪ Stabling and Maintenance Facility:               <ul style="list-style-type: none"> <li>○ Site establishment works</li> <li>○ Luddenham Station</li> <li>○ Site establishment works</li> </ul> </li> <li>▪ Aerotropolis Core:               <ul style="list-style-type: none"> <li>○ Site establishment works</li> </ul> </li> </ul>	





- Clean water diversion drain
- Site access routes

**ER Inspections**

There was one ER Inspection on 12 December 2023 conducted by MR [REDACTED] ER inspections are undertaken on a risk-based frequency while site setup continues.

Key points/ issues raised during this inspection were as follows:

- It was noted that the sites were generally good.
- Actions by Parklife Metro (PLM) were ongoing for long-term erosion stabilisation and stabilisation of embankments.
- The sites were noted to not be producing visible dust and no sediment tracking was observed.

**Photos**



**STM** – Barriers installed to direct vehicles through the wheel wash and site compound installation



**ORH** – Scouring of the northern embankment. PLM agreed to install long term erosion and sediment controls



**ORH** – Noted scouring of swale. PLM agreed to place more rock to reduce scouring.



**SMF** – Minor scouring of the batter was noted and weed maintenance was discussed with PLM.



**LUD** – Handover of the station portion had occurred



**AEC** – Preparation for the diversion of the clean water swale. Noted that damming of the swale would occur while the diversion works occurred.



**AEC – Discharge swale from water treatment dam.**  
 PLM noted that geofabric required repining.

**AEC – Realignment of the boundary dirty water swale**

**Endorsed Document/s**

No documents were endorsed/approved by the ER, however, the following documents were approved as the Sydney Metro (SM) approved delegate pursuant to Section 1.4.4 of the Construction Noise and Vibration Standard v4.2:

- DNVIS STM Rev 0 – including OOH concrete work.

The following documents were provided for information or reviewed with comments provided to Sydney Metro:

- E57 St Marys Station Consultation Report - Rev00 - Issued for Information

**Complaints / Incidents / Non-compliance**

No non-compliances were identified by or reported to the ER during this period.  
 There were no incidents of note reported to the ER during this period.

One complaint was reported to the ER during the period from STM about air quality and lack of TV reception. PLM onsite monitoring indicated that the dust was not from the site (noting the site is sealed concrete roads and limited gravel areas) and no dust-generating activities were occurring. It was noted by the ER that the complaint originated a distance from the site and the wind direction indicated that the dust was likely from the opposite direction, therefore this complaint is not related to Sydney Metro activities from STM works.

**Audits (specific to packages reported in this report)**

No audits were undertaken during the period.

**Looking Forward – Core Focus Areas**

The focus is on the implementation of the CEMP and sub-plans, with a particular focus on erosion controls and sediment tracking.

**ER Closing Comments:** The project team continues to have a healthy team dynamic. Detailed design is continuing. PLM has been actioning issues timely, noting that long-term erosion stabilisation actions are ongoing.

The following planning activities are ongoing.

- Design review ongoing
- Place, Urban Design and Corridor Landscape Plan (PUDCLP) public exhibition was completed 15 December and responses are being compiled

## 5. Statement of Limitations

Healthy Buildings International (HBI) has prepared this report in accordance with the requirements of Condition A32 (k) of the Sydney Metro Western Sydney Airport, Concept and Stage 1 SSI 10051 Approval (23 July 2021). The report is for the sole purposes of the Department of Planning, Housing and Infrastructure (DHI) and Sydney Metro. It has been prepared based on generally accepted practices and standards at the time it was prepared. No other warranty, expressed or implied, is made as to the professional advice included in this Report. This report did not assess any aspects relating to safety.

Where the Report indicates that information has been provided to HBI by third parties, HBI assumes no liability for any inaccuracies in or omissions to that information.

This Report was prepared based on the conditions encountered and information reviewed at this time. HBI disclaims responsibility for any changes that may have occurred after this time.

This Report should be read in full. No responsibility is accepted for use of any part of this report in any other context or for any other purpose or by third parties. This Report does not purport to give legal advice. Legal advice can only be given by qualified legal practitioners.

Except as required by law, no third party may use or rely on this Report unless otherwise agreed by HBI in writing. Except as specifically stated in this section, HBI does not authorise the use or findings of this Report by any third party

To the extent permitted by law, HBI expressly disclaims and excludes liability for any loss, damage, cost or expenses suffered by any third party relating to or resulting from the use of, or reliance on, any information contained in this Report. HBI does not admit that any action, liability or claim may exist or be available to any third party.



HBI

Healthy Buildings International Pty Ltd

A.C.N. 003 270 693

A.B.N. 39 003 270 693

Suite 2.06, Level 2  
29-31 Solent Circuit  
Norwest NSW 2153

Tel: 61 (02) 9659 5433  
e-mail: [hbi@hbi.com.au](mailto:hbi@hbi.com.au)  
Web:

[www.hbi.com.au](http://www.hbi.com.au)

19 December 2023

██████████  
Director Sustainability Environment & Planning SMWSA  
Sydney Metro  
Transport for NSW  
PO Box K659  
HAYMARKET NSW 1240

Ref: 201209(c)\_CEMP\_R3

Dear ██████████

**RE: Endorsement of Construction Environmental Management Plan - Sydney Metro Western Sydney Airport Surface and Civil Alignment Works**

Thank you for providing the Construction Environmental Management Plan Sydney Metro Western Sydney Airport Surface and Civil Alignment Works (Revision 3), dated 13 December 2023 (the CEMP) for Environmental Representative (ER) review and endorsement, as required by Conditions of Approval C1, C2, C3 and C13(d) of the Sydney Metro Western Sydney Airport project approval (SSI 10051 July 23, 2021):

The CEMP contains the following construction sub-plans and monitoring programs, therefore these documents form part of this review and endorsement:

- Air Quality Construction Monitoring Program Revision 3, dated 29/09/2023 (AQ-CMP)
- Noise and Vibration Management Sub Plan (NVMP) Revision 3, dated 13/12/2023 which includes the Noise and Vibration Construction Monitoring Program (NV-CMP)
- Soil and Water Management Sub Plan (SWMP) Revision 3, dated 04/10/23 which includes the Surface Water Quality Construction Monitoring Program (SW-CMP)

The main changes to the above documents is the inclusion of a time frame for submission of the Construction Monitoring Report to DPE, as well as minor amendments for clarity.

It is noted that:

- Previous versions of the documents have been reviewed and updated following comments from the ER.
- Sydney Metro have also reviewed and commented on the relevant documents.
- Evidence of consultation records has been provided to the ER for the AQ-CMP, NV-CMP, NVMP, SW-CMP and SWMP.

- Following the above reviews, the documents are considered to contain the information and consultation required.

Accordingly, as an approved ER for the Sydney Metro Western Sydney Airport project, I now consider the CEMP, the AQ-CMP, the NV-CMP, the NVMP, the SW-CMP and the SWMP consistent with the requirements in or under the Infrastructure Approval and the undertakings made in the documents listed in Condition A1.

Yours sincerely



Environmental Representative – Sydney Metro Western Sydney Airport