

# Notification – Orchard Hills Metro Station and the Stabling and Maintenance Facility

25 January 2024

Sydney Metro is Australia’s biggest public transport project.

Sydney Metro – Western Sydney Airport is the new metro railway line which will service Greater Western Sydney and the new Western Sydney International (Nancy-Bird Walton) Airport. A city-shaping project, the 23-kilometre new railway will connect the Western Sydney Aerotropolis in the south with St Marys in the north – where customers can connect to the existing Sydney Trains suburban T1 Western Line. The NSW and Australian governments have a shared objective of having Sydney Metro – Western Sydney Airport operational when the airport opens for passenger services.

Parklife Metro consortium was awarded the Stations, Systems, Trains, Operations, and Maintenance (SSTOM) contract for Sydney Metro – Western Sydney Airport in late December 2022.

Parklife Metro will deliver 12 new metro trains, six new stations between St Marys and the new Aerotropolis, rail systems and the stabling and maintenance facility to be built at Orchard Hills. Parklife Metro will operate and maintain the Western Sydney Airport line for 15 years after it becomes operational.

## Work during February includes:

- Site establishment works including the delivery of site sheds, temporary power supply, construction and sealing of internal haulage roads at SMF
- Minor civil works for the hardstand and parking areas including foundations, backfilling and levelling, line markings, fencing and site signage at SMF
- Bulk earthworks including the delivery of quarry materials, stockpiling and filling of main site areas at SMF
- Commencement of piling and associated works (pile trimming) including mobilization of subcontractor plant and equipment, pile cages and concrete deliveries to Orchard Hills Station site
- Crane pad runway formation on the western side of the Station box at Orchard Hills Station site
- Geotechnical testing and environmental controls across the sites

## Out-of-hours work activity includes:

- Ongoing deliveries of over-sized equipment, machinery, and materials
- Oversize over-mass deliveries of piling rigs, mobile cranes and tower crane components.
- Steel fixing, formwork, waterproofing, concrete pours and dewatering.

## What to expect

- Work may generate some noise, but impact is expected to be minimal
- Work will be completed during standard construction hours **Monday to Friday, 7am to 6pm** and **Saturday, 8am to 1pm**. Nearby residents and businesses will be notified in advance of any likely out-of-hours work
- An increase in small to medium vehicles entering the project alignment site via Kent Road (Gate K2) at Orchard Hills Metro Station site, and Patons Lane at the Stabling and Maintenance Facility site
- Increased vehicle movements on surrounding roads
- Communication will be limited to radios only when moving and unloading equipment, with no use of horns or loud radios
- Traffic control and signage to safely assist motorists, pedestrians, and cyclists



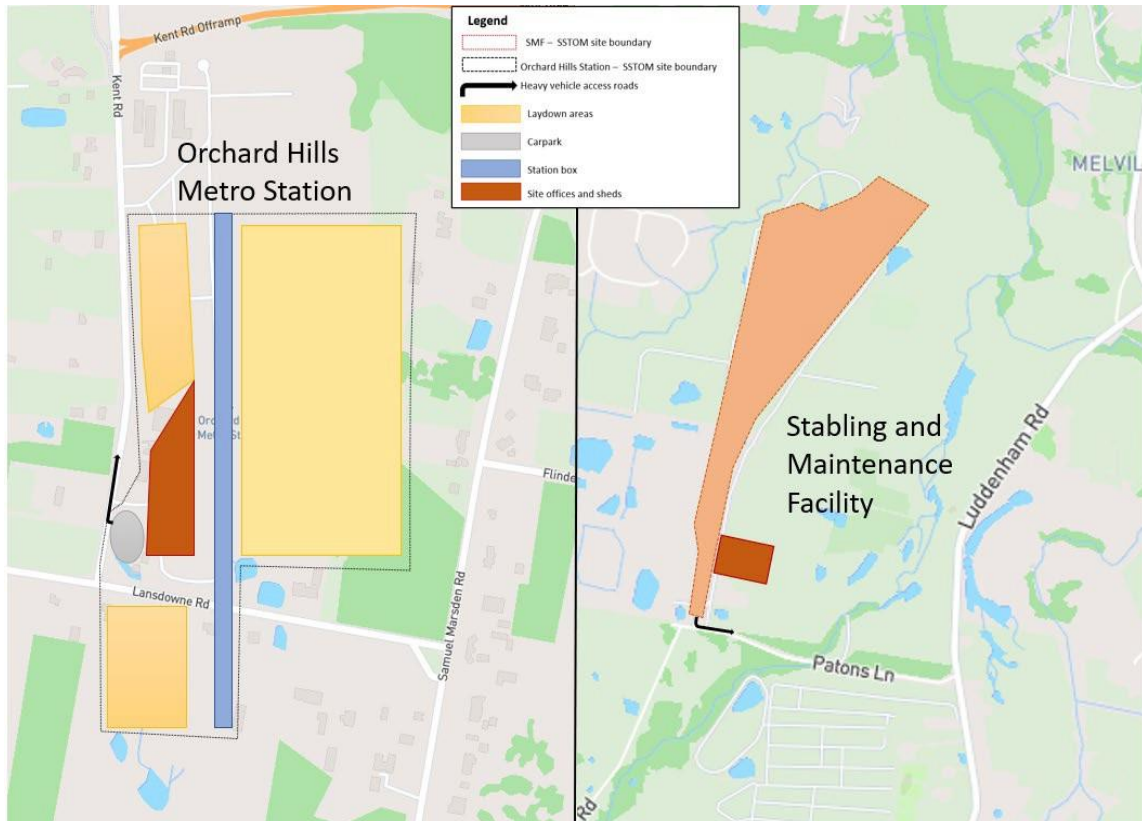
- Most of our work will be completed during standard construction hours **Monday to Friday, 7am to 6pm** and **Saturday, 8am to 1pm**
- Out-of-hours work activities will be carried out to mitigate quality and safety risks, and in line with the project Environment Protection License, Road Occupancy Licenses, and Transport for NSW requirements.

*Surrounding residents and businesses will be notified in advance of any out-of-hours work.*

## Equipment used:

Includes (but is not limited to) excavators, cranes, dozers, graders, rollers, vacuum truck, cranes, piling rigs, water carts, heavy and light site vehicles, watercart, generators, survey equipment (marker pegs and pickets, flagging) and traffic management devices, concrete agitators, water carts, pneumatic drills, concrete saws, bobcats, chain saws, telehandler and hand tools.

## Orchard Hills Metro Station and the Stabling and Maintenance Facility work areas:



## Contact us:

Please contact Bella, the dedicated Place Manager from the Parklife Metro community team on **1800 717 703** or emailing [sydneymetrowsa@transport.nsw.gov.au](mailto:sydneymetrowsa@transport.nsw.gov.au) if you have any questions, or would like to provide feedback about the work, including appropriate respite periods.

We value your input regarding our communications approach and engagement. Thank you for your cooperation while we complete this essential work.

---

## Contact us



24-hour Community Information Line **1800 717 703**



[sydneymetrowsa@transport.nsw.gov.au](mailto:sydneymetrowsa@transport.nsw.gov.au)



Sydney Metro – Western Sydney Airport, PO Box K659, Haymarket NSW 1240



Access information in over **100 languages** Download **Sydney Metro Connect** from the App store or get it on Google Play.



### Translating and interpreting service

If you need help understanding this information, please contact the Translating and Interpreting Service on **131 450** and ask them to call us on **1800 717 703**.