

Tunnelling Notification

6 December 2023

Sydney Metro is Australia's biggest public transport project.

The NSW Government is delivering Sydney Metro West, a new underground metro railway which will double rail capacity between Parramatta and the Sydney CBD.

Sydney Metro has been granted planning approval to construct twin underground rail tunnels between Westmead and Hunter Street in the Sydney CBD for Sydney Metro West.

Gamuda Australia and Laing O'Rourke Consortium (GLC) has been awarded the contract to deliver nine kilometres of twin metro rail tunnels between Westmead and Sydney Olympic Park, excavation for two new metro stations, a stabling and maintenance facility at Clyde and a precast facility at Eastern Creek.

Tunnelling update – Clyde

Two tunnel boring machines (TBMs) will be excavating twin tunnels between Clyde and Sydney Olympic Park. The TBMs will travel beneath or near your property to build the tunnels for Sydney Metro West and will be between 21 and 22 metres below ground in this area. A map showing the tunnel alignment is provided on the next page.

We have revised our TBM program of work. Please see the map overleaf for updated work area.

The first TBM is expected to pass under or near your property in about three to five weeks. A second machine will pass through your area about one month after the first machine. The TBMs are expected to travel an average of 200 metres every week, depending on ground conditions.

To stay up to date on the progress of TBMs, visit the interactive map at caportal.com.au/tfnsw/sydmetrowest/map or subscribe for email updates at metrotunnelsGLC@transport.nsw.gov.au.

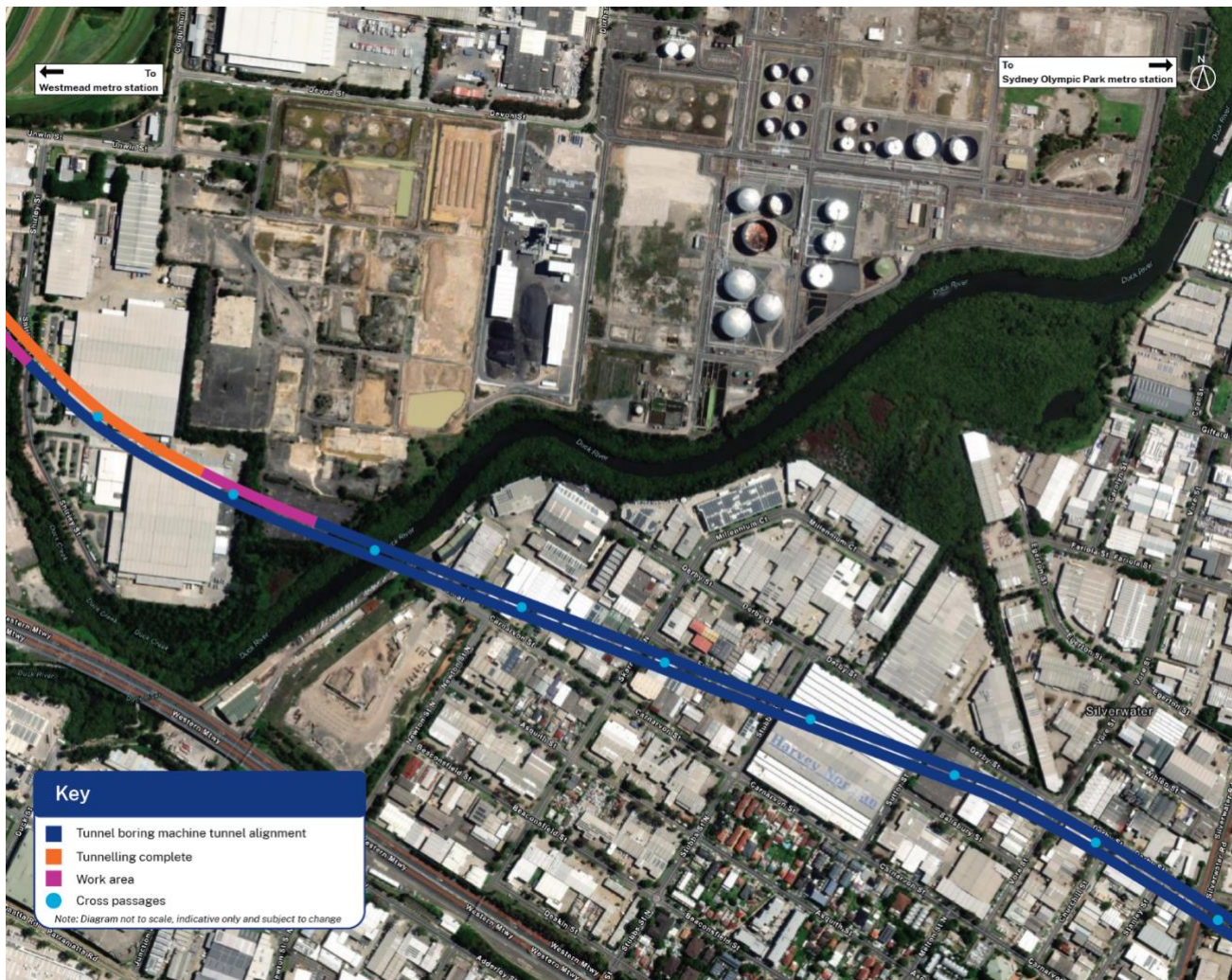
Tunnelling activities include:

- Excavating rock and installing the permanent lining of the tunnel
- Safely removing excavated material via conveyor belts through the tunnels back to the Rosehill Services Facility at Clyde and then transporting it by truck to be reused on other projects around Sydney
- Excavating cross passages located at regular intervals along the alignment. Cross passages are an important safety feature linking the twin tunnels. After the TBMs have passed, excavators create the passages between the twin tunnels, which are then waterproofed and sealed with a concrete lining.

What to expect

- Tunnelling will take place 24 hours a day, seven days a week
- Some vibration and ground borne noise may be experienced for up to two days as the TBMs travel beneath or near your property.
- The noise is less noticeable during the day when traffic, household or office noise levels are higher.
- Tunnelling surveyors will continue to collect information from surveying devices previously installed on roadways, footpaths and buildings.

Tunnelling alignment



Contact us

Please contact GLC's Community team on **1800 612 173** or by email if you have any questions, complaints or would like to provide feedback about the work, including appropriate respite periods. We will continue to keep you updated on the progress of work in your area.

If you would prefer to receive updates by email, please send a request to metrotunnelsGLC@transport.nsw.gov.au and we will add you to the distribution list.

Thank you for your cooperation while we complete these essential works.

1800 612 173 Community information line open 24 hours
metrotunnelsGLC@transport.nsw.gov.au
Sydney Metro West, PO Box K659, Haymarket NSW
1240



Access information in over
100 languages

Download **Sydney Metro Connect** from
the App Store or get it on Google Play.



If you need help understanding this information, please contact the Translating and Interpreting Service
on **131 450** and ask them to call us on **1800 612 173**