

Notification – Luddenham Station

1 November 2023

Sydney Metro is Australia's biggest public transport project.

Sydney Metro – Western Sydney Airport is the new metro railway line which will service Greater Western Sydney and the new Western Sydney International (Nancy-Bird Walton) Airport. A city-shaping project, the 23-kilometre new railway will connect the Western Sydney Aerotropolis in the south with St Marys in the north – where customers can connect to the existing Sydney Trains suburban T1 Western Line. The NSW and Australian governments have a shared objective of having Sydney Metro – Western Sydney Airport operational when the airport opens for passenger services.

Parklife Metro consortium was awarded the Stations, Systems, Trains, Operations and Maintenance (SSTOM) contract for Sydney Metro – Western Sydney Airport in late December 2022.

Parklife Metro will deliver 12 new metro trains, six new stations between St Marys and the new Aerotropolis, rail systems and the stabling and maintenance facility to be built at Orchard Hills. Parklife Metro will operate and maintain the Western Sydney Airport line for 15 years after it becomes operational.

November and December work activity includes:

- Continuing site establishment activities, including line marking, site signage, installation of temporary water and power supply
- Delivery and installation of site sheds and equipment
- Minor civil works for the parking areas in the site compound, including foundations, backfilling and levelling
- Surveying and geotechnical investigation activities, including potholing and testing

- Commencing works on the Luddenham Station site, including excavations and drainage works
- Installation of environmental controls
- Site photography, including using drone camera above the construction site.

What to expect and managing impacts:

- Work and equipment used in these work activities may generate some noise, vibration, and dust
- Mitigation measures will be in place to minimise these impacts including noise and vibration monitoring, respite periods during high noise activities, and water carts for dust suppression
- Increased light and heavy vehicle movements to site on Luddenham Road, and on the surrounding roads
- Work will be completed during standard construction hours **Monday to Friday, 7am to 6pm** and **Saturday, 8am to 1pm**.

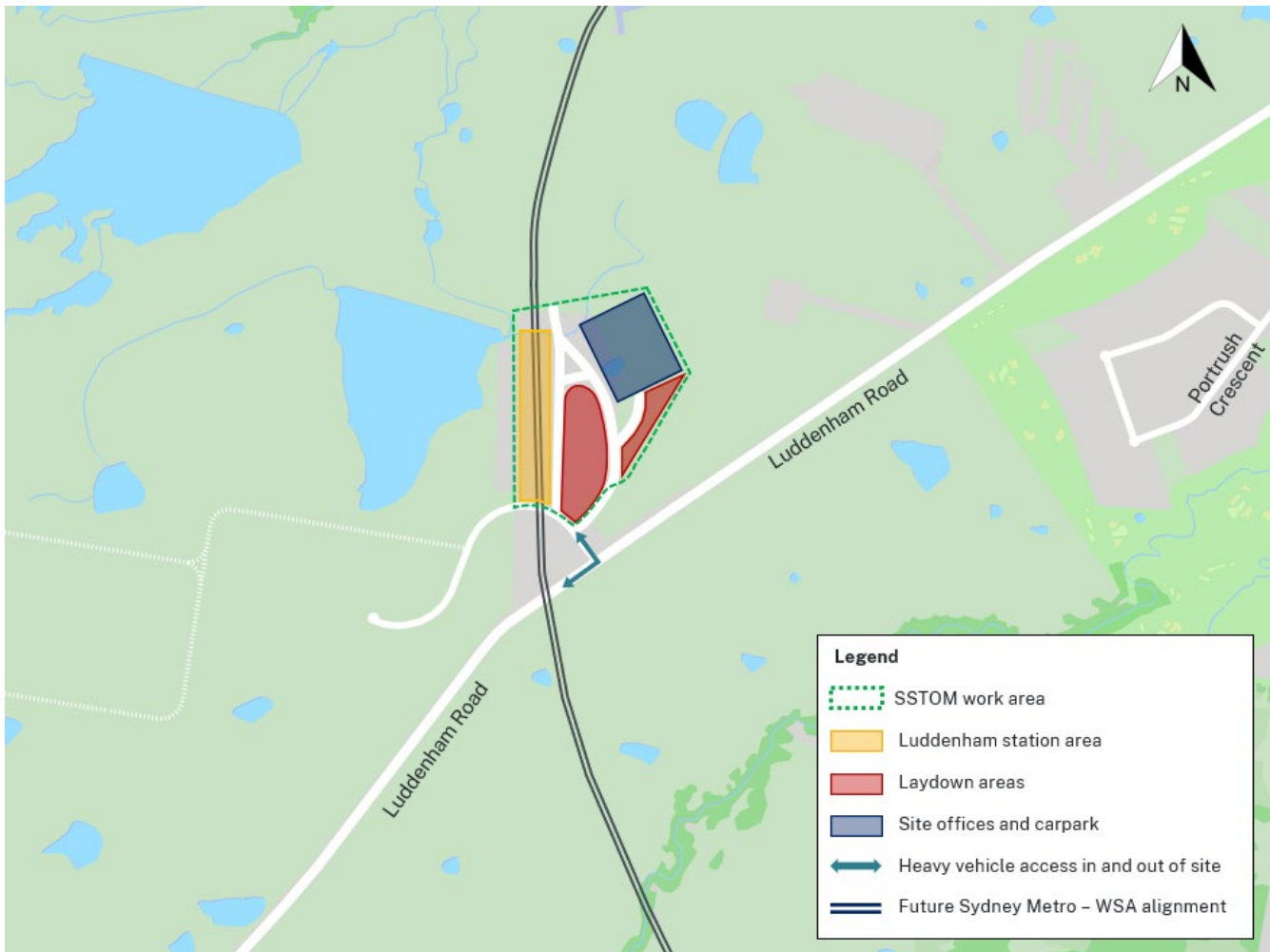
A Detailed Noise and Vibration Impact Statement (DNVIS) for the area has been prepared, including proposed mitigation measures as a result of noise modelling. We invite your feedback if alternative measures may be required for your specific circumstances. To provide feedback, please contact the Parklife Metro Community Team.

Equipment used:

Equipment used on site includes excavators, elevated work platforms, franna cranes, mobile cranes, forklifts and manitoux, concrete mobile pumps and concrete trucks, water carts, generators, vacuum trucks, bob cats, rollers dewatering pump, hand tools, lighting towers, light and heavy vehicles, and traffic management.



Location of work area



Contact us

Please contact Jess, the dedicated Place Manager from the Parklife Metro community team on **1800 717 703** or email **sydneymetrowsa@transport.nsw.gov.au** if you have any questions or would like to provide feedback about the work, including appropriate respite periods.

We will continue to keep you updated on the progress of work in your area. If you would prefer to receive updates by email, please send a request to **sydneymetrowsa@transport.nsw.gov.au** and we will add you to the distribution list.

Sydney Metro has launched Sydney Metro Connect – a new way to stay informed. You can download Sydney Metro Connect on the App Store or get it on Google Play. We value your input regarding our communications approach and engagement. Thank you for your cooperation while we complete this essential work

Contact us

24-hour Community Information Line **1800 717 703**

sydneymetrowsa@transport.nsw.gov.au

Sydney Metro – Western Sydney Airport,
PO Box K659, Haymarket NSW 1240



Access information in over 100 languages
Download **Sydney Metro Connect** from the App store or get it on Google Play.



Translating and interpreting service

If you need help understanding this information, please contact the Translating and Interpreting Service on **131 450** and ask them to call us on **1800 717 703**