

Tunnelling monthly update – Rosehill

25 October 2023

Sydney Metro is Australia's biggest public transport project.

The NSW Government is delivering Sydney Metro West – a new underground metro railway which will double rail capacity between Parramatta and the Sydney CBD.

Sydney Metro has been granted planning approval to construct twin underground rail tunnels between Westmead and Hunter Street in the Sydney CBD for Sydney Metro West.

Gamuda Australia and Laing O'Rourke Consortium (GLC) has been awarded the contract to deliver nine kilometres of twin metro rail tunnels between Westmead and Sydney Olympic Park, excavation for two new metro stations, a stabling and maintenance facility at Clyde and a precast facility at Eastern Creek.

Community information session

You're invited to drop-in and chat with members of our construction and community engagement teams on **Wednesday 8 November** between **4pm and 6pm** at Hambledon Cottage, 63 Hassall Street, Parramatta. GLC's construction and community engagement teams will be available to provide information and answer questions about tunnelling and construction activities.

Tunnelling update – November 2023

Roadheader tunnelling is continuing at Clyde to excavate two underground connecting tunnels for Sydney Metro West. These tunnels will connect the twin metro tunnels to the Clyde stabling and maintenance facility.

Tunnelling has progressed west of James Ruse Drive and will continue along the alignment toward Hassall Street. We anticipate working in this area over the next four weeks excavating and lining the connecting tunnels and commencing excavation of the junction cavern, see map overleaf.

Machinery and equipment will enter the temporary access shaft at Clyde, located within an acoustic shed adjacent to James Ruse Drive. Spoil (excavated material) will also be removed from this location.

When tunnelling activities are nearing your property, we will notify you again.

Tunnelling activities will be carried out 24 hours a day, seven days a week.

What to expect:

Residents near the tunnel alignment may experience temporary ground-borne noise and vibration as the roadheaders progress through the area. The levels of noise and vibration will vary depending on the ground conditions, depth of the tunnel, time of day, background noise levels, and type of building. The duration of these impacts will depend on the location of your property along the tunnel alignment.

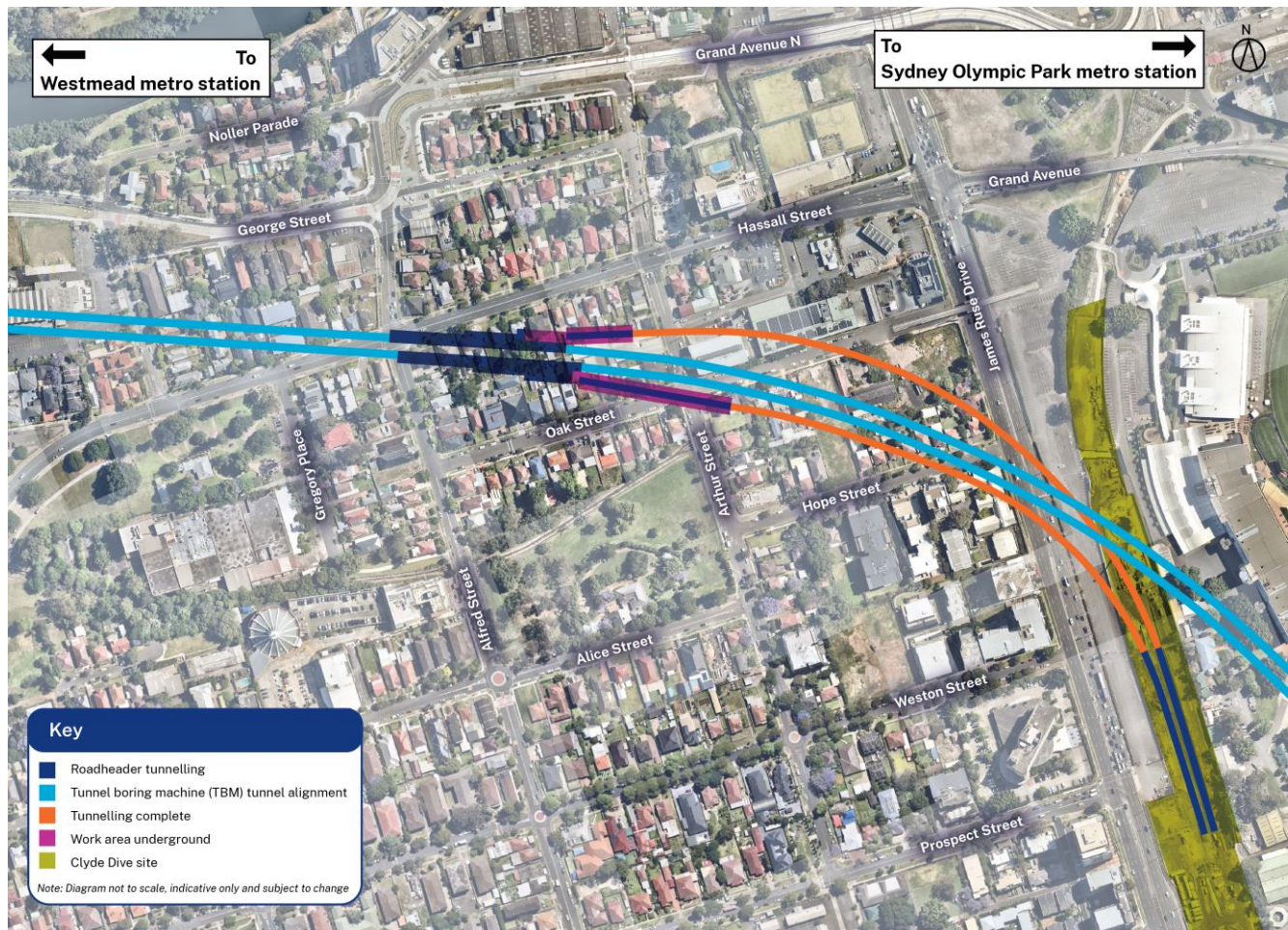
To view your property in relation to the tunnel alignment, visit Sydney Metro's interactive map portal at: www.caportal.com.au/tfnsw/sydmetrowest/map

Noise and vibration levels will be regularly monitored during construction and managed in accordance with approvals and environmental requirements.

To sign up to our distribution list for email updates, scan the QR code and fill in the online form.



Tunnel alignment:



Contact us

Please contact Olivia from GLC's Community team on **1800 612 173** or by email if you have any questions, complaints or would like to provide feedback about the work, including appropriate respite periods. We will continue to keep you updated on the progress of work in your area.

If you would prefer to receive updates by email, please send a request to metrotunnelsGLC@transport.nsw.gov.au and we will add you to the distribution list.

Thank you for your cooperation while we complete these essential works.

1800 612 173 Community information line open 24 hours

metrotunnelsGLC@transport.nsw.gov.au



Access information in over 100 languages

Download **Sydney Metro Connect** from the App store or get it on Google Play.

Sydney Metro West, PO Box K659, Haymarket NSW 1240



If you need help understanding this information, please contact the Translating and Interpreting Service on **131 450** and ask them to call us on **1800 612 173**