



Out-of-hours work notification – Barangaroo Station

October 2023

Sydney Metro is Australia's biggest public transport project

Services started in May 2019 in the city's North West with a train every four minutes in the peak. Metro rail will be extended into the CBD in 2024, with new metro railway stations at Crows Nest, Victoria Cross, Barangaroo, Martin Place, Pitt Street and Waterloo and new metro platforms at Central, and then onto Bankstown in 2025.

BESIX Watpac is building the new Barangaroo Station, including delivering the station fit-out and associated landscaping and civil works, including the re-alignment of Hickson Road.

Systems Connect (an unincorporated joint venture between CPB Contractors and UGL Limited) is delivering line-wide work, which includes installing metro rail track, power systems, communications, and infrastructure to turn the excavated tunnels into a working railway between Chatswood and Sydenham.

Upcoming out-of-hours work (OOHW) – Removal of temporary footpath bridge at Nawi Cove (includes a full closure of the foreshore footpath)

BESIX Watpac has finished installing condenser water systems and other pipework for the station in front of the Cutaway at Nawi Cove. During September, BESIX Watpac has been building a new footpath alignment in front of 25 Hickson Road, and in October it will remove the footpath diversion in place since February 2023.

Part of this work will include removing the temporary scaffold bridge structure across Nawi Cove. Due to the bridge location, it is not possible to undertake this work during standard construction hours, as it requires a full closure of the footpath, which is too disruptive during the day. To carry out this work, **between Monday 16 October and Thursday 19 October the foreshore footpath will be closed overnight for up to three nights, between Crown Towers to just before the entrance to the Cutaway at Nawi Cove. The footpath closure will be in place between 9pm and 5am the following day, when the footpath will reopen for public use.** Contingency dates are listed in the table on page 2.

What to expect

- Temporary lighting may be used to ensure a safe work site and will be directed away from properties.
- There will be pedestrian management controls onsite to aid pedestrians.
- Equipment to be used will be hand tools (battery screwdrivers, other non-electric tools), and a 20-tonne franna crane.
- Pedestrian access to the foreshore will be diverted via the steps south of 30 Hickson Road (via Jenkins Street, Gas Lane and Kent Street) and Barangaroo Reserve. Accessible routes will remain available via the lifts at Barangaroo Reserve and Napoleon Street (marked on the map on page 2)
- We do not expect the work to be noisy.

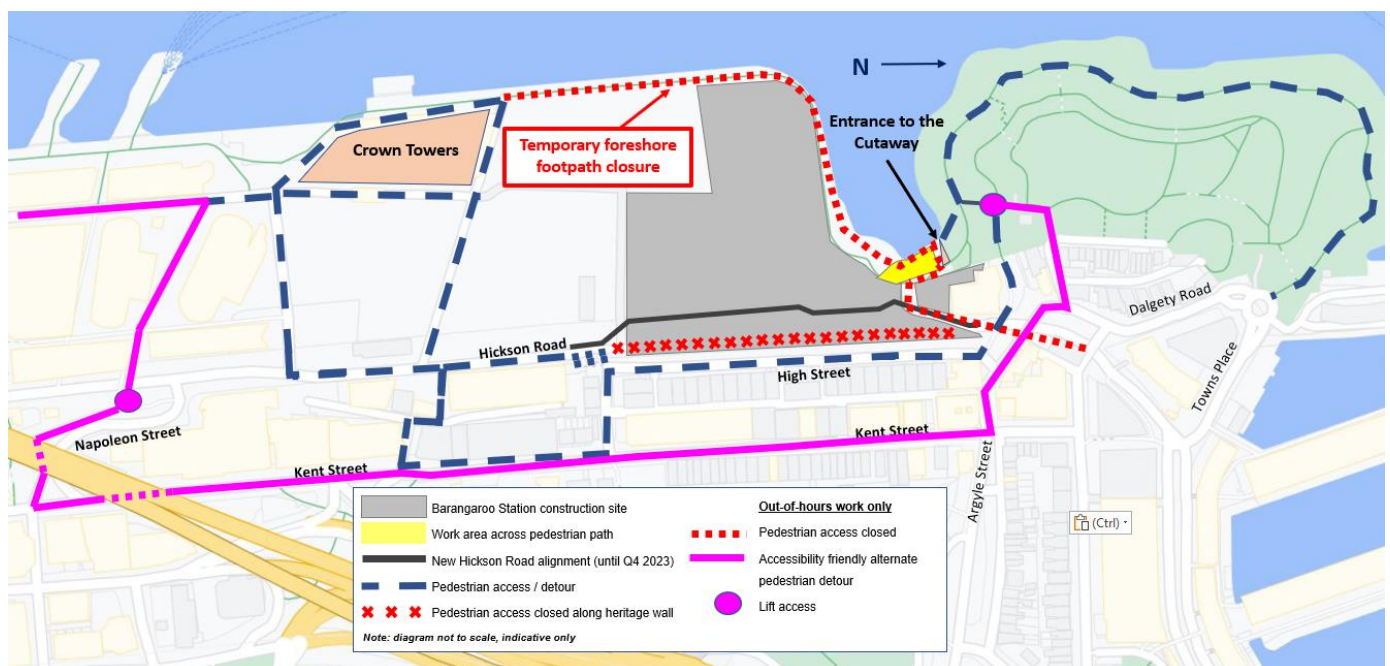
Location, timing and activities

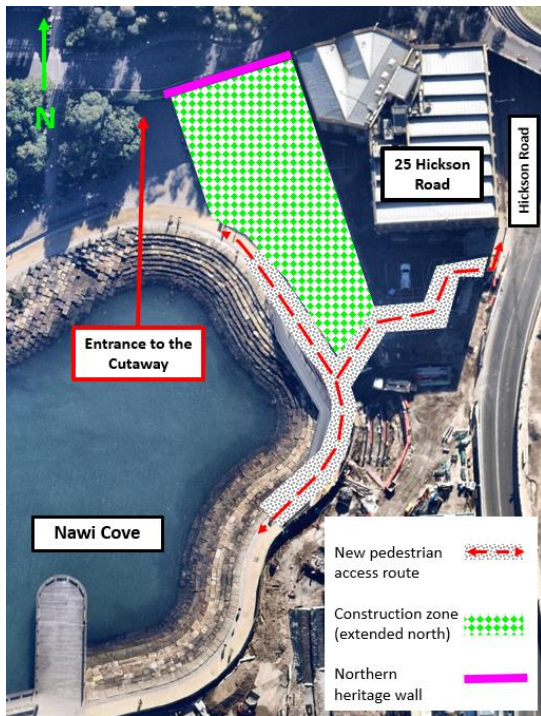
Dates and times of the foreshore footpath closure during the removal of the temporary footpath bridge	Activities during the footpath closure
<p>Barangaroo station construction site in front of the Cutaway at Nawi Cove with foreshore footpath closure from Crown Towers to the Cutaway</p> <ul style="list-style-type: none"> 9pm Monday 16 October to 5am Tuesday 17 October 2023 9pm Tuesday 17 October to 5am Wednesday 18 October 2023 9pm Wednesday 18 October to 5am Thursday 19 October 2023 (9pm Thursday 19 October to 5am Friday 20 October 2023 – contingency) <p><i>The following dates will be used as contingency for any delays that do not allow the work to start on 9 October 2023</i></p> <ul style="list-style-type: none"> 9pm Monday 23 October to 5am Tuesday 24 October 2023 9pm Tuesday 24 October to 5am Wednesday 25 October 2023 9pm Wednesday 25 October to 5am Thursday 26 October 2023 (9pm Thursday 26 October to 5am Friday 27 October 2023 - contingency) 	<ul style="list-style-type: none"> Installing pedestrian management to close the foreshore pathway. Disconnecting and removing timber ramps. Reinstating original footpath. Dismantling and removing scaffolding. Packing up and demobilising, including reopening the foreshore footpath.

Pedestrian detours during the foreshore path closure

There will be **no pedestrian access between the northern corner of Crown Towers and just before the entrance to the Cutaway at Nawi Cove between the hours of 9pm and 5am the following day.** Pedestrian access to the Barangaroo headland foreshore and the Cutaway will remain available via High Steps or the steps south of The Bond building at 30 Hickson Road, and via Barangaroo Reserve.

Directional signage will be in place for the safety of workers and the community. Please refer to the map below for details about the pedestrian detours, including accessible detours.





New footpath between Nawi Cove and Hickson Road and reconfiguration to construction zone

During and following the work to remove the temporary footpath bridge, the footpath east of Nawi Cove will be realigned through a section of the current construction zone. This realignment will reinstate a more direct pedestrian route from Nawi Cove to Hickson Road, as marked on the map to the left.

The construction zone in that area will also be realigned and extended north, enabling the final works along the northern heritage wall to be completed. We expect the final works to take up to four weeks to complete and will continue to update the community as this work progresses via our monthly and weekly e-news updates.

Roadworks under Dalgety Bridge during standard construction hours

In the coming months, roadworks will continue under the Dalgety bridge as we build temporary and permanent road alignments and install water services and gas infrastructure. The work will be particularly noisy during periods when we will use jackhammers to break the existing road surface and sandstone rock and at times the work will require a single-lane closure, with traffic management in place.

We will continue to provide updates in the weekly 'e' news which will include notice of noisy work.

For any prolonged noisy work, there will be respite periods on weekdays from 9.30am - 10.30am and 12.30pm - 1.30pm. On Saturdays, work will commence at 8am and end at either 1pm without respite periods or 6pm with respite periods in line with the weekday arrangements. Noise reduction techniques include:

- limiting the use of multiple pieces of loud machinery at the same time and location, where feasible
- turning off equipment when not in use
- using non-tonal reversing alarms on all equipment, and
- operating equipment on the lowest effective vibration setting, where feasible.

Thank you for your cooperation while we complete this essential work.

If you have any questions, please contact the BESIX Watpac Community Engagement Team on **1800 171 386** (24-hour community information line) or at barangaroometrostation@transport.nsw.gov.au.

Email updates provide the most up-to-date information on dates, locations and details of activities, including out-of-hours activities. If you would like to register for these emails, please send your name, address, email, and phone number to barangaroometrostation@transport.nsw.gov.au.